

Cretaceous

Paleocene

Eocene

Oligocene

Miocene

Pliocene

Quaternary

110

65.5

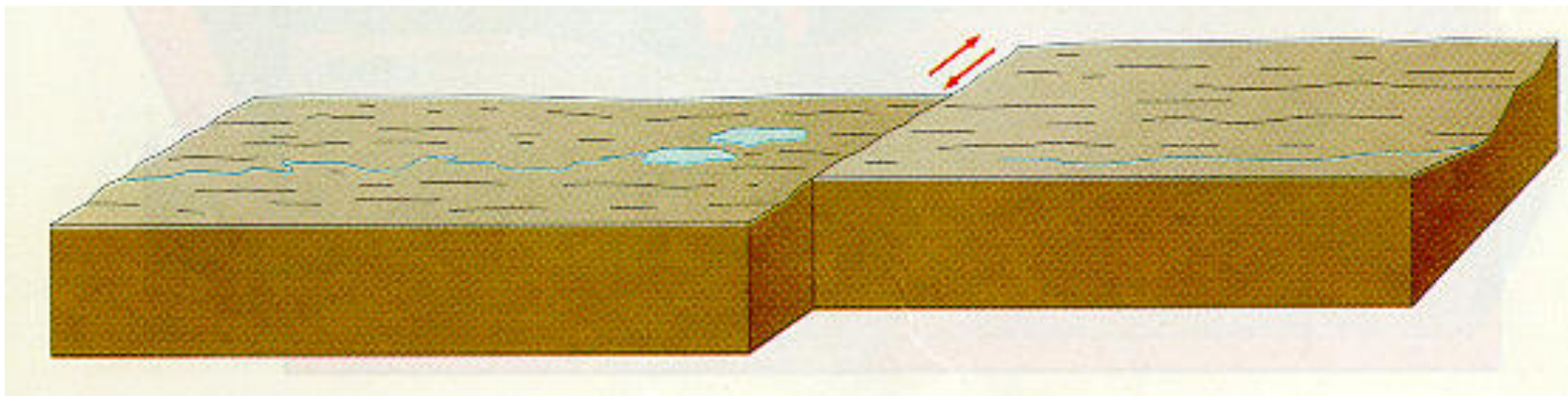
55.8

33.9

23

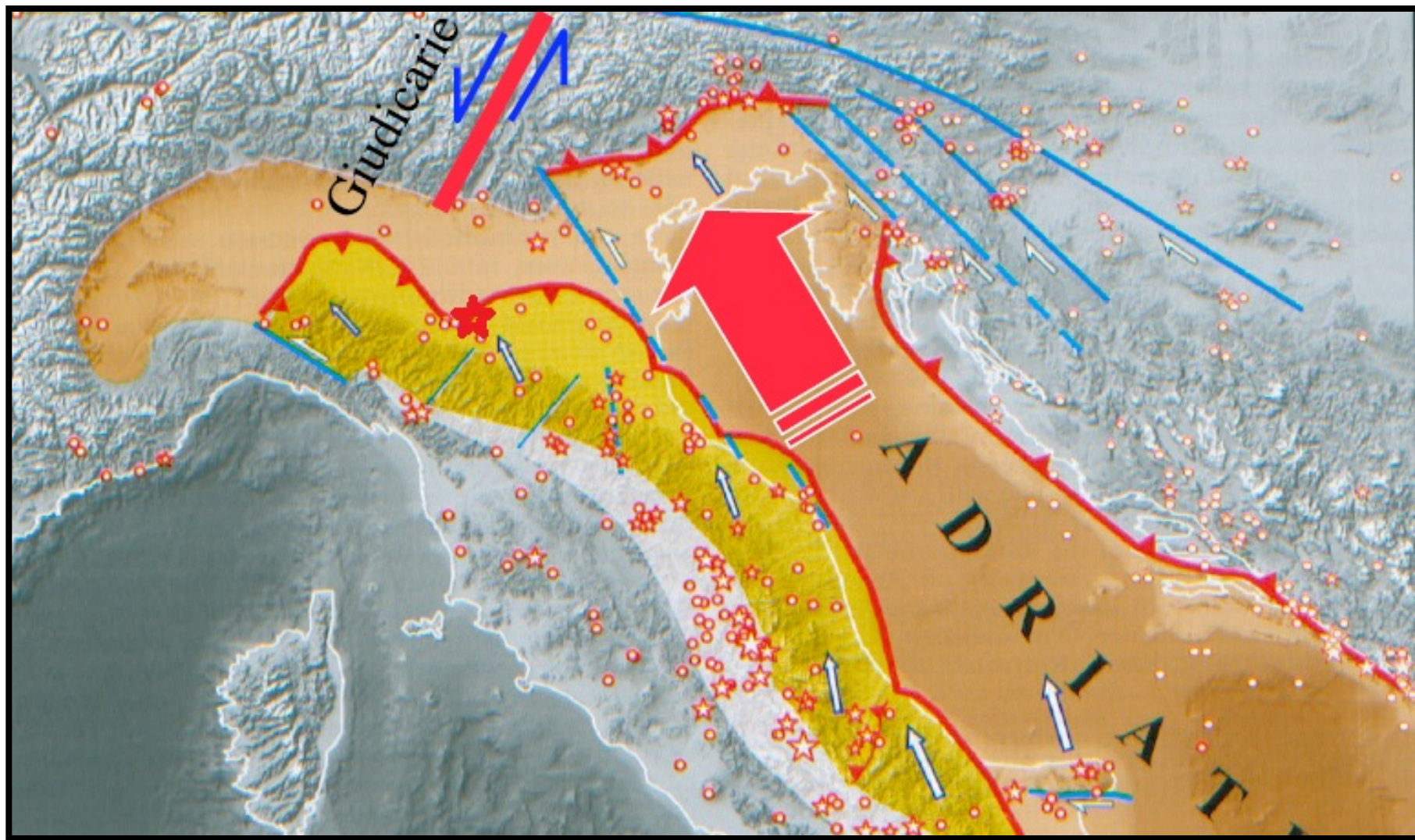
5.3 1.8 m.y.

### III fase Il margine trascorrente

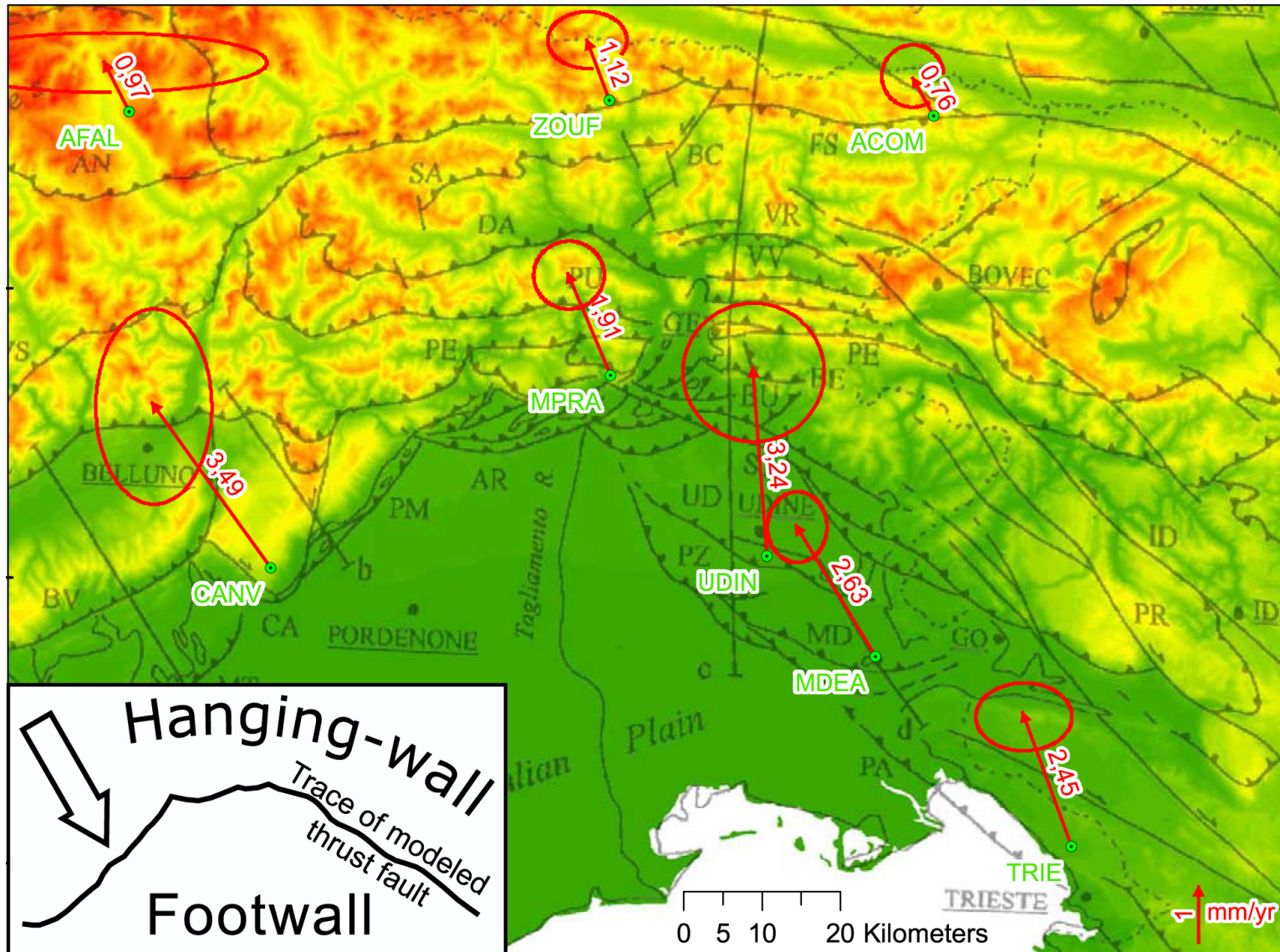




# La Microplacca Adriatica



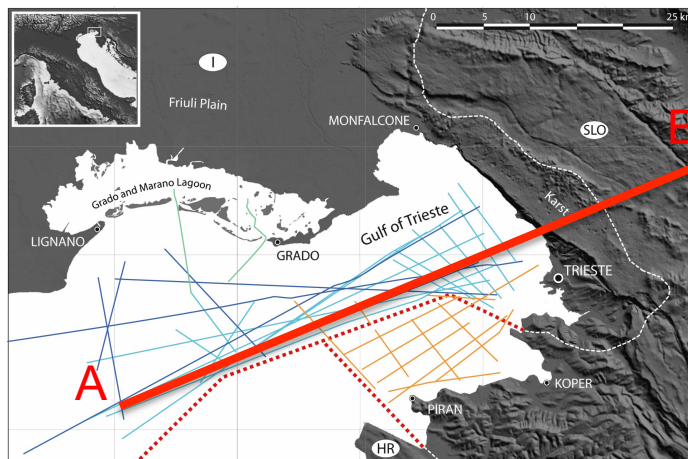




Bechtold et al., JGR, 2009

movimenti in millimetri all'anno

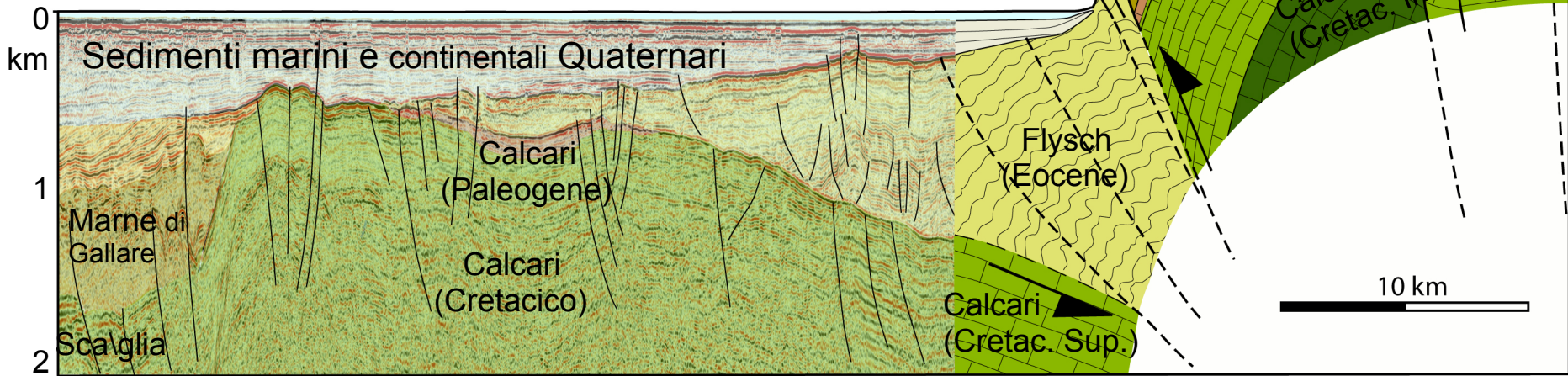




**avampaese dinarico**

**rampa frontale** **Carso** **B**  
 Thrust del Carso  
 Faglia della Raša  
 Faglia di Divača

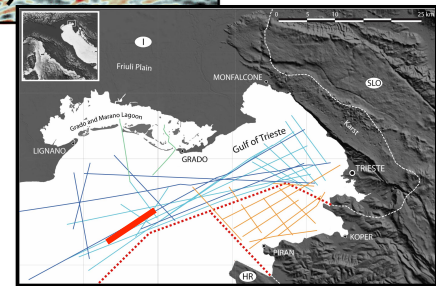
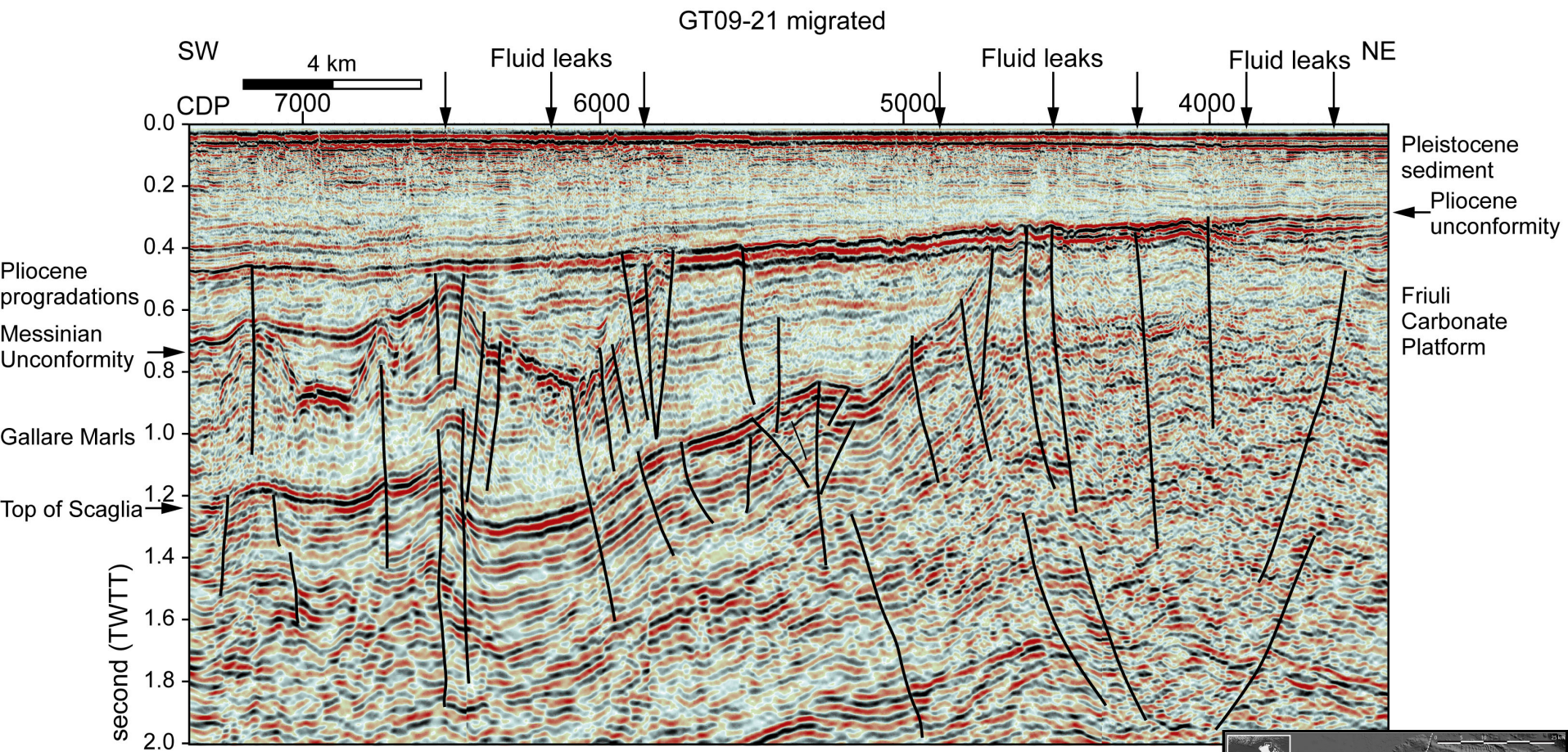
**A rialzo periferico** **avanfossa**





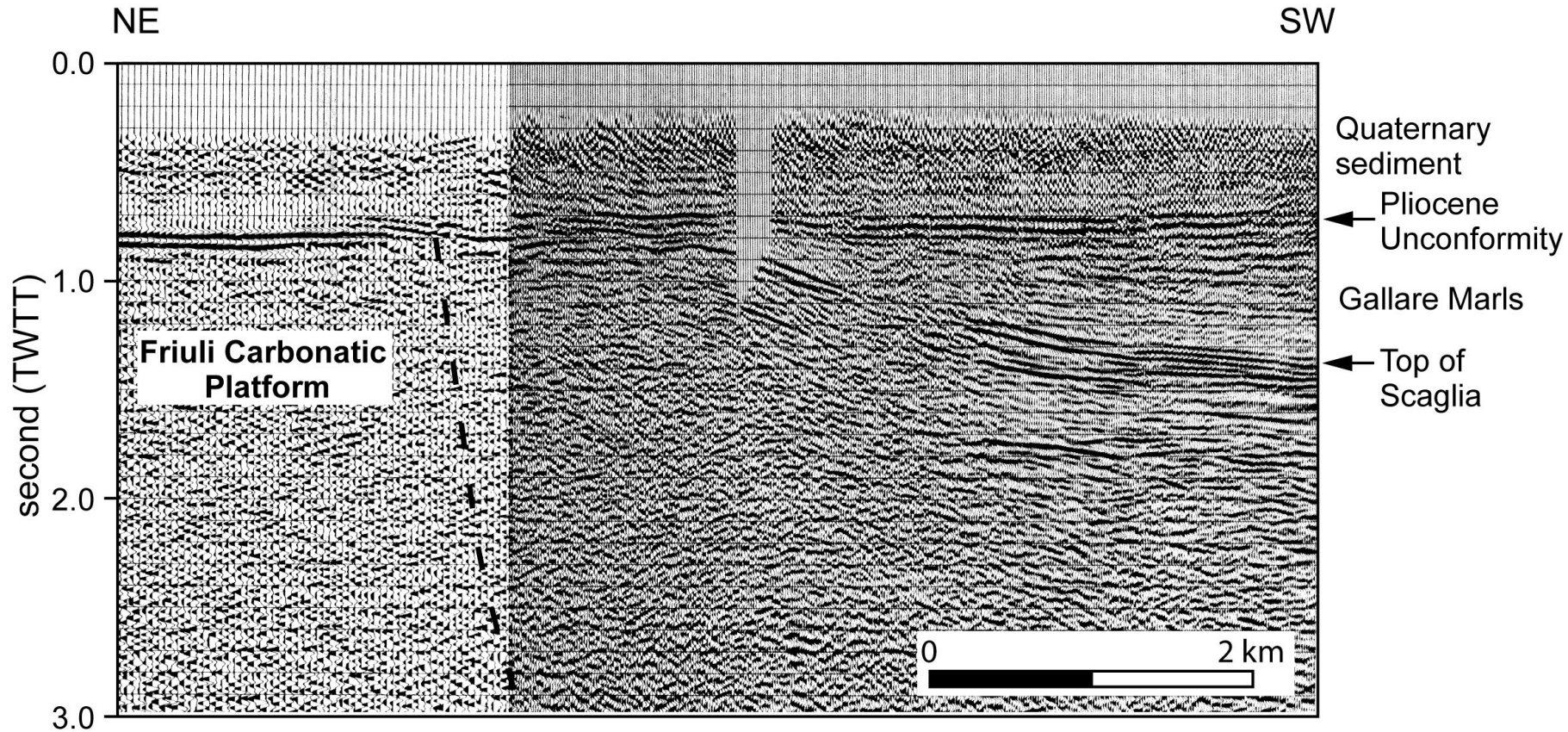




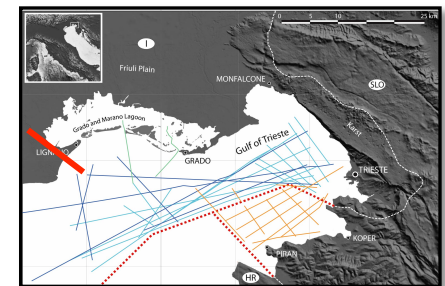




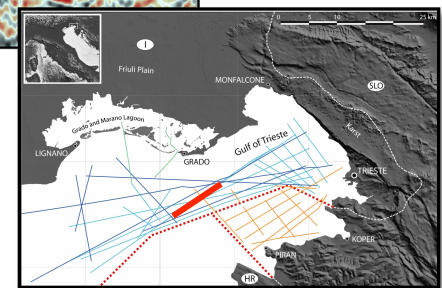
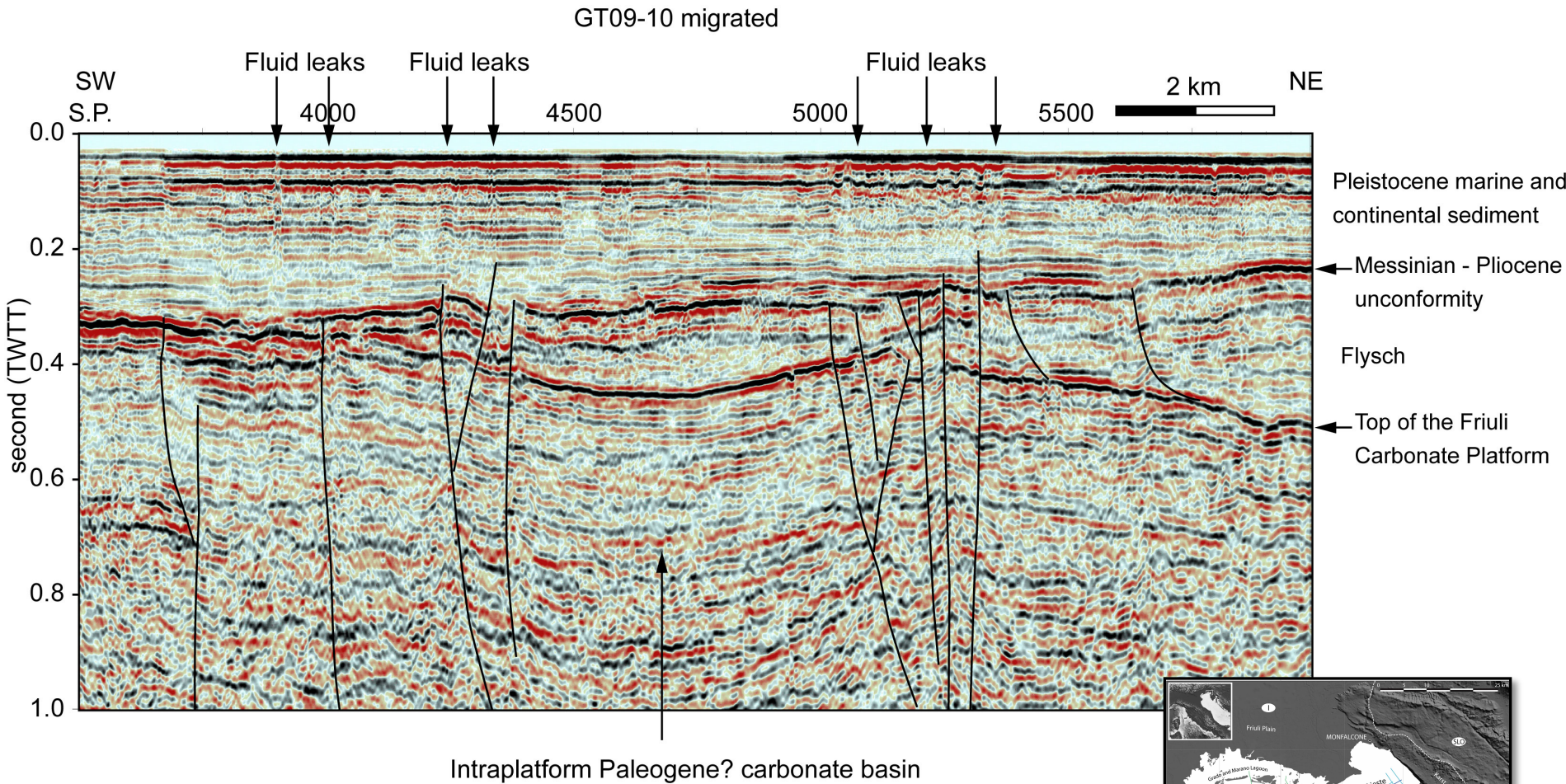
### Eastern Southern Alps Profile (VIDEPI)



Progetto ViDEPI  
del Ministero dello Sviluppo Economico, Società Geologica Italiana  
e Assomineraria  
*Visibilità dei dati afferenti all'attività di esplorazione petrolifera in Italia*

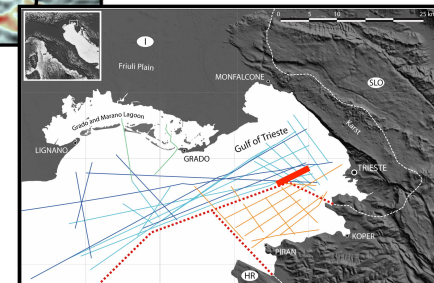
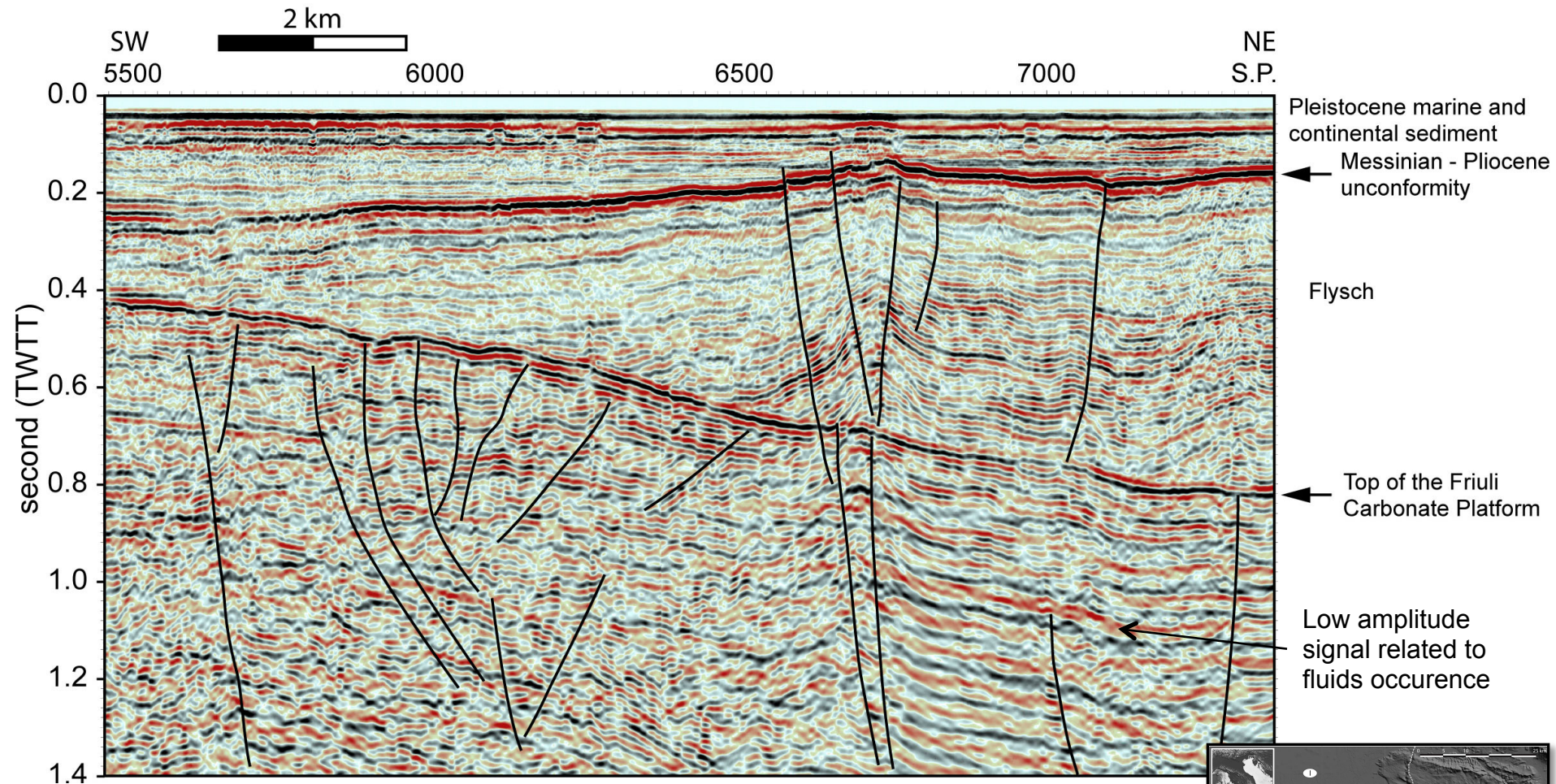






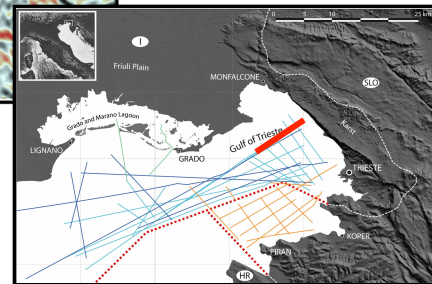
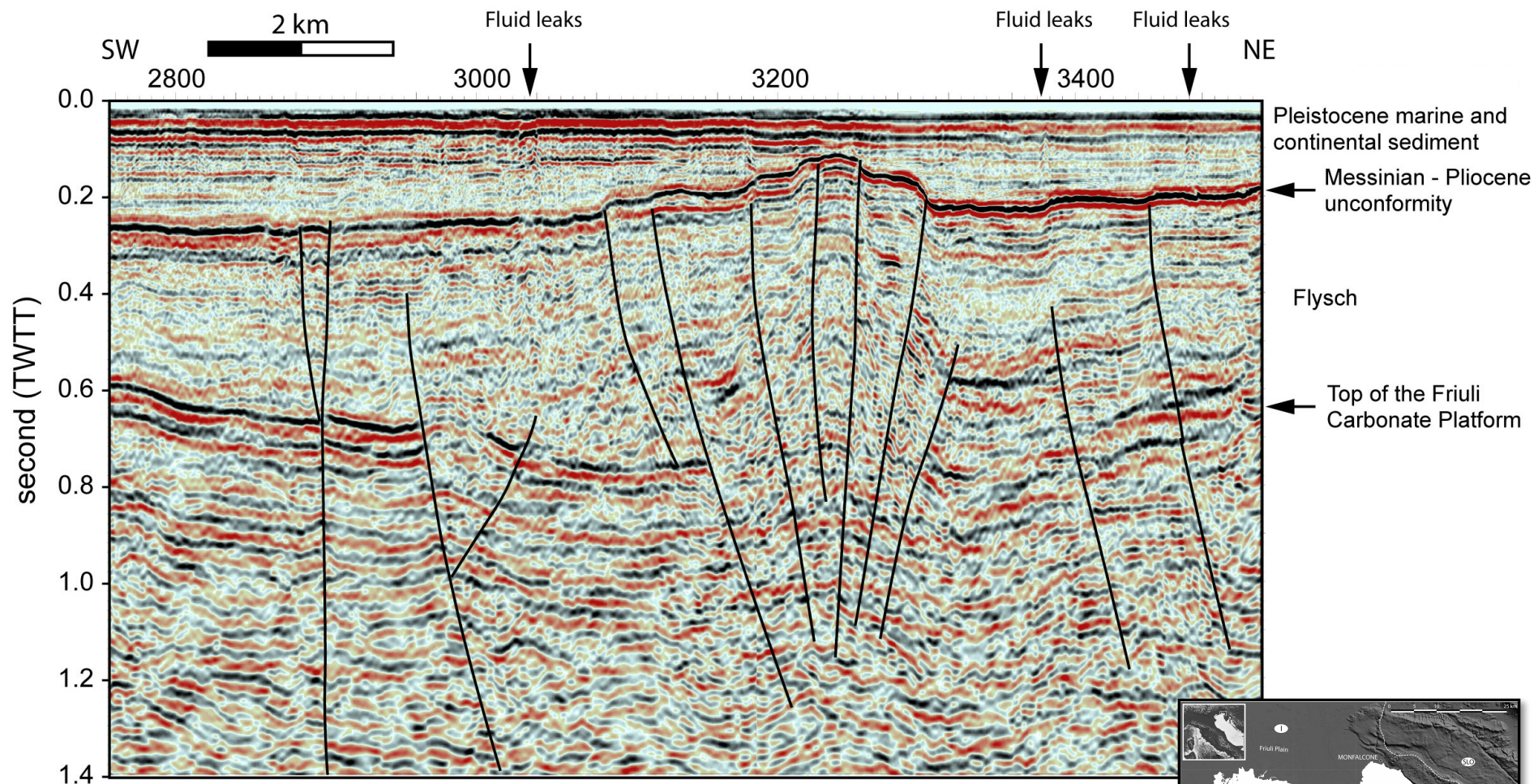


### GT09-10 migrated





### GT09-13 migrated





SW

GT13-26

Anticlinale di Isola

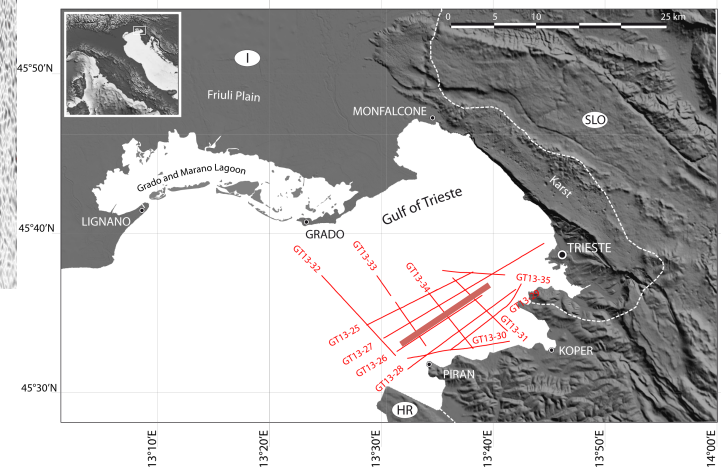
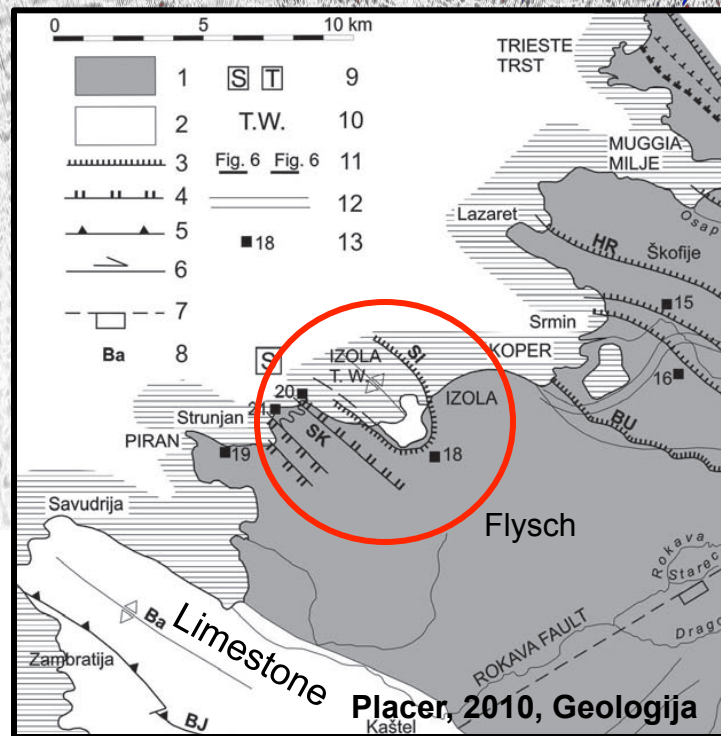
NE

Sedimenti marini e continentali quaternari

Flysch

Carbonati

Flysch





SW

GT13-26

# Anticlinale di Isola

NE

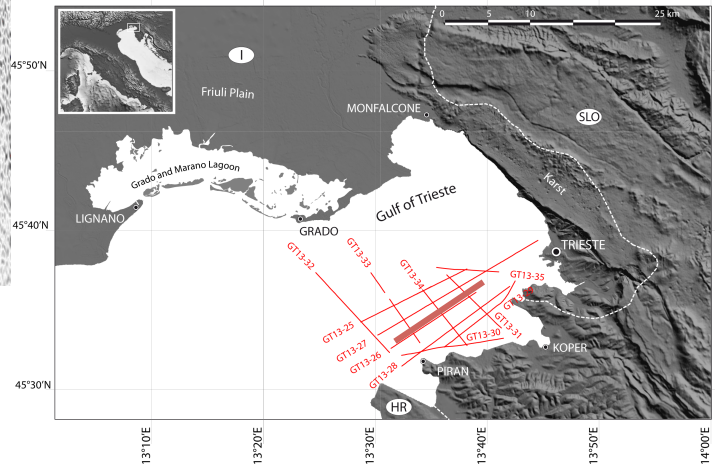
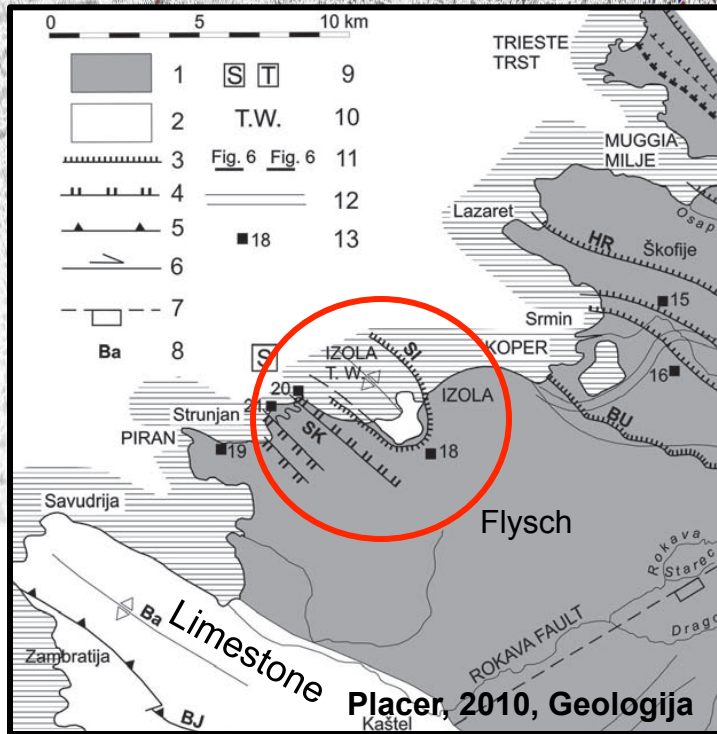
Sedimenti marini e continentali quaternari

Flysch

Carbonati

Flysch

0  
0.1  
0.2  
0.3  
0.4  
0.5

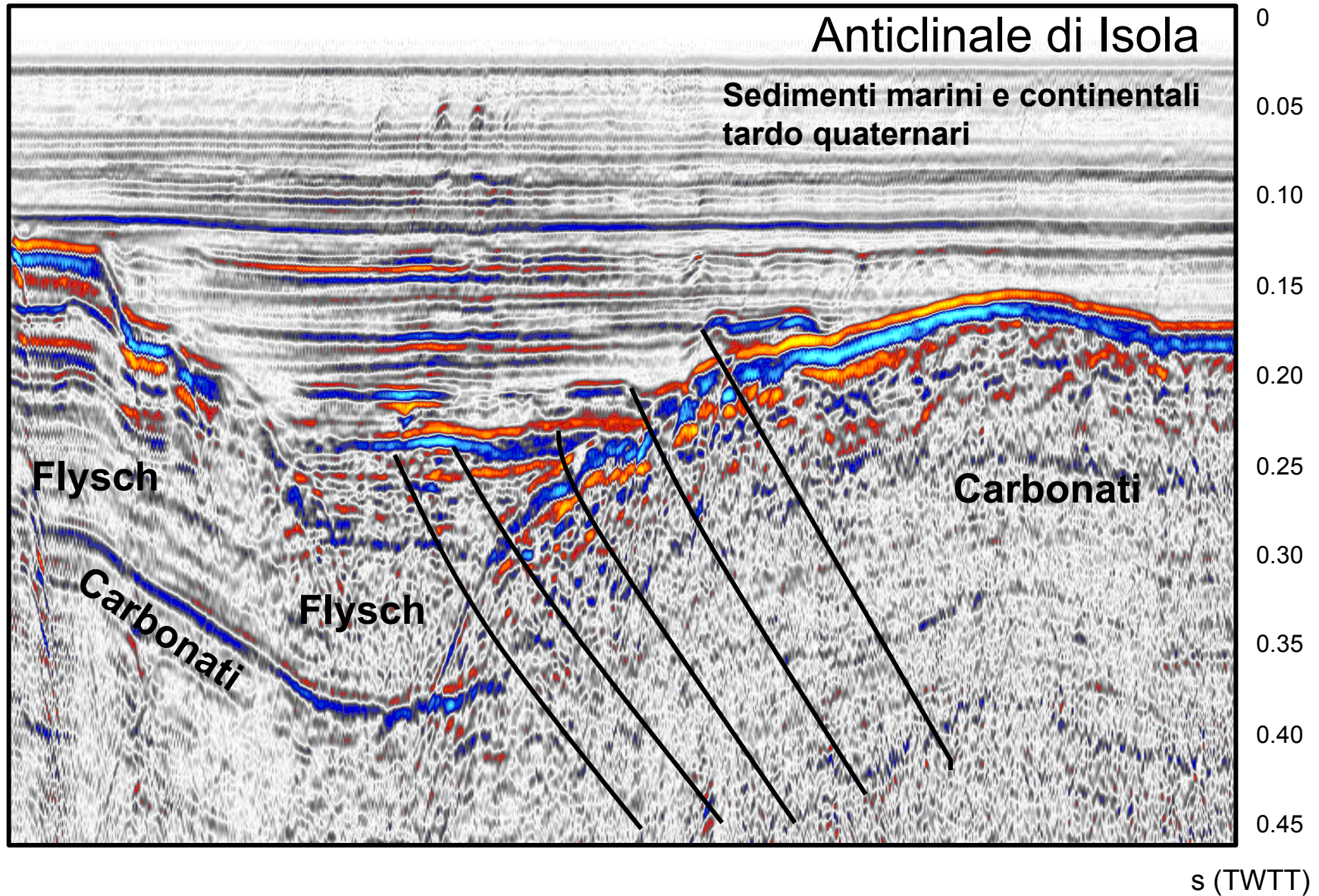




SW

# GT13-26

NE





# Tetto dei carbonati (millisecondi)

