

Insert your name and surname here:

My Name

My Surname

The day before yesterday was:

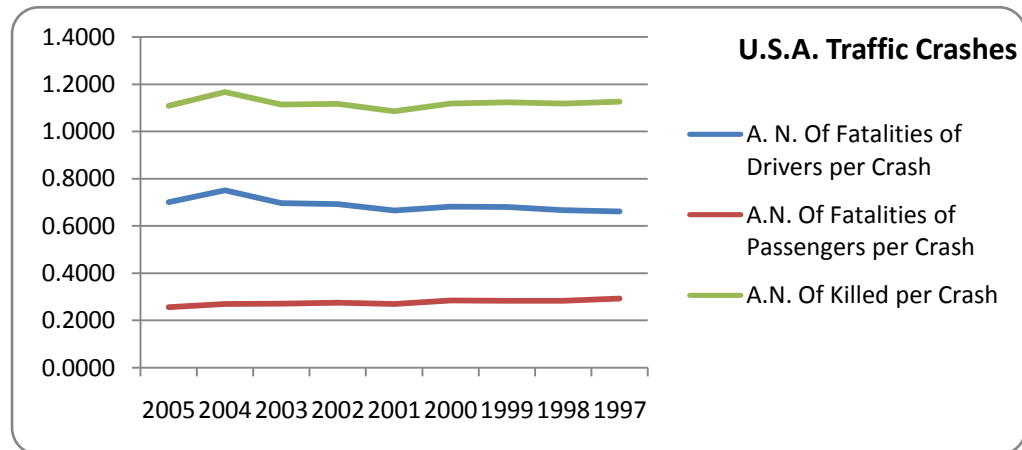
1/5/2009

Today is:

1/7/2009

Total Traffic Crashes In the United States									
Year	Fatal Vehicle Crashes	Fatality Totals:				Non-Motorists Killed:			Total Killed
		Drivers	Passengers	Other	Sub-total	Pedestrians	Bicyclists	Other	
2005	39189	27472	10036	86	37594	4881	784	184	43443
2004	38444	28871	10355	78	37304	4675	727	130	44836
2003	38477	26779	10458	104	37341	4774	629	140	42884
2002	38491	26659	10604	112	37375	4851	665	114	43005
2001	38862	25869	10469	102	36440	4901	732	123	42196
2000	37526	25567	10695	86	36348	4763	693	141	41945
1999	37140	25257	10521	97	35875	4939	754	149	41717
1998	37107	24743	10530	109	35382	5228	760	131	41501
1997	37324	24667	10944	114	35725	5321	814	153	42013

Years	A. N. Of Fatalities of Drivers per Crash	A.N. Of Fatalities of Passengers per Crash	A.N. Of Killed per Crash
2005	0.7010	0.2561	1.1086
2004	0.7510	0.2694	1.1663
2003	0.6960	0.2718	1.1145
2002	0.6926	0.2755	1.1173
2001	0.6657	0.2694	1.0858
2000	0.6813	0.2850	1.1178
1999	0.6800	0.2833	1.1232
1998	0.6668	0.2838	1.1184
1997	0.6609	0.2932	1.1256



A.N. = Average Number

Insert the year ==>

2005

Number of pedestrians killed in that year ==>

4881

Years	Values					
	Sum of Drivers	Sum of Passengers	Sum of Other	Sum of Pedestrians	Sum of Bicyclists	Sum of Other2
From 1997 to 1999	74667	31995	320	15488	2328	433
1997	24667	10944	114	5321	814	153
1998	24743	10530	109	5228	760	131
1999	25257	10521	97	4939	754	149
From 2000 to 2002	78095	31768	300	14515	2090	378
2000	25567	10695	86	4763	693	141
2001	25869	10469	102	4901	732	123
2002	26659	10604	112	4851	665	114
From 2002 to 2005	83122	30849	268	14330	2140	454
2003	26779	10458	104	4774	629	140
2004	28871	10355	78	4675	727	130
2005	27472	10036	86	4881	784	184
Grand Total	235884	94612	888	44333	6558	1265