

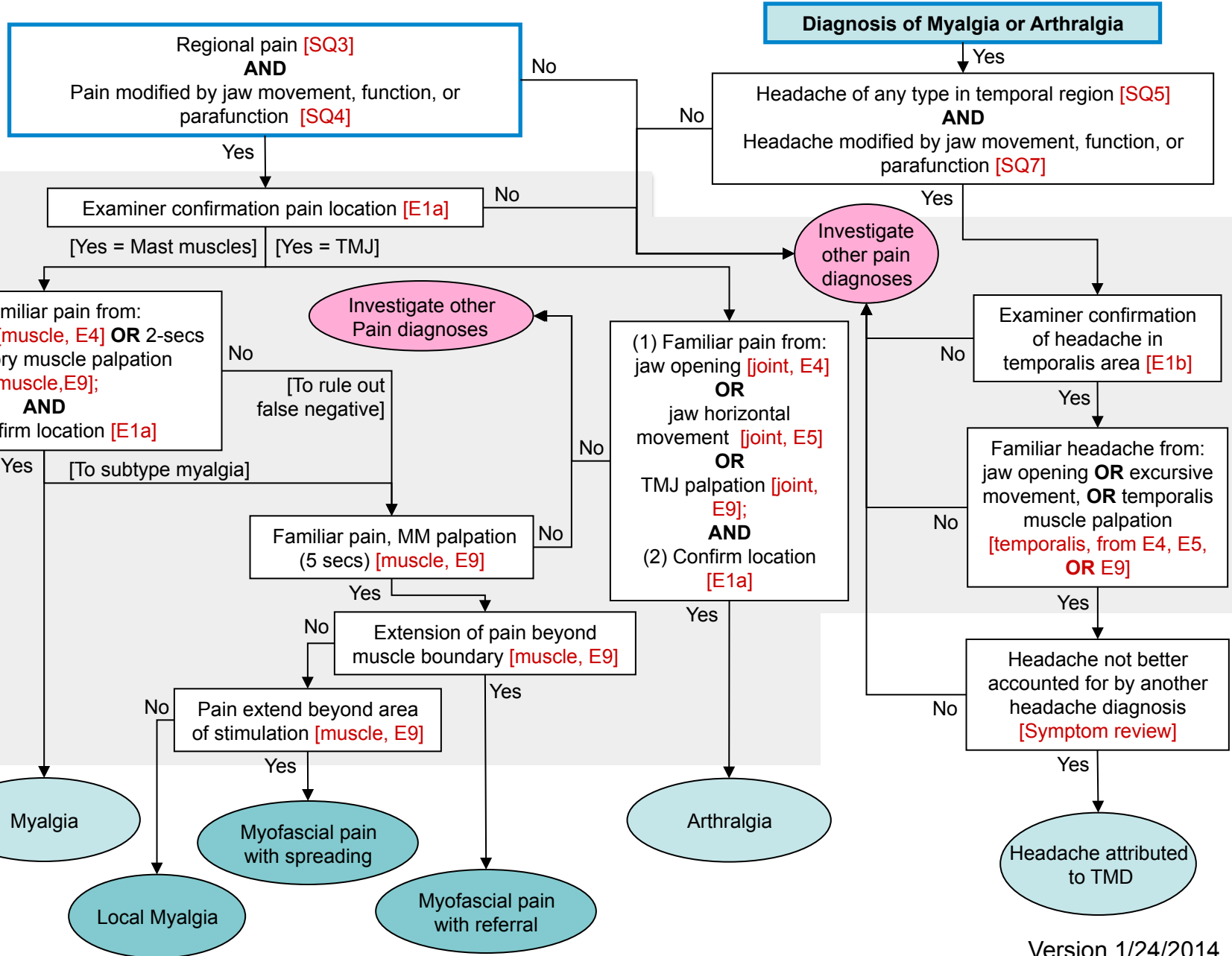
Diagnostic Criteria for Temporomandibular Disorders (DC/TMD): Diagnostic Decision Tree

Pain-Related TMD and Headache

HISTORY
Start at each
blue-outline box

EXAMINATION

DIAGNOSIS



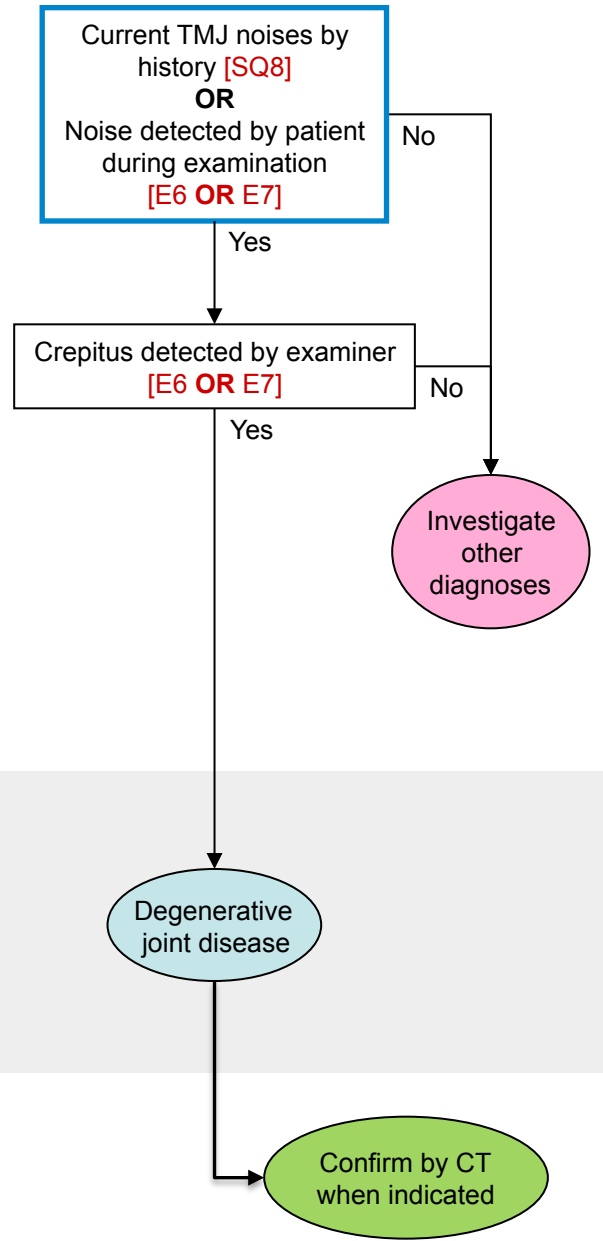
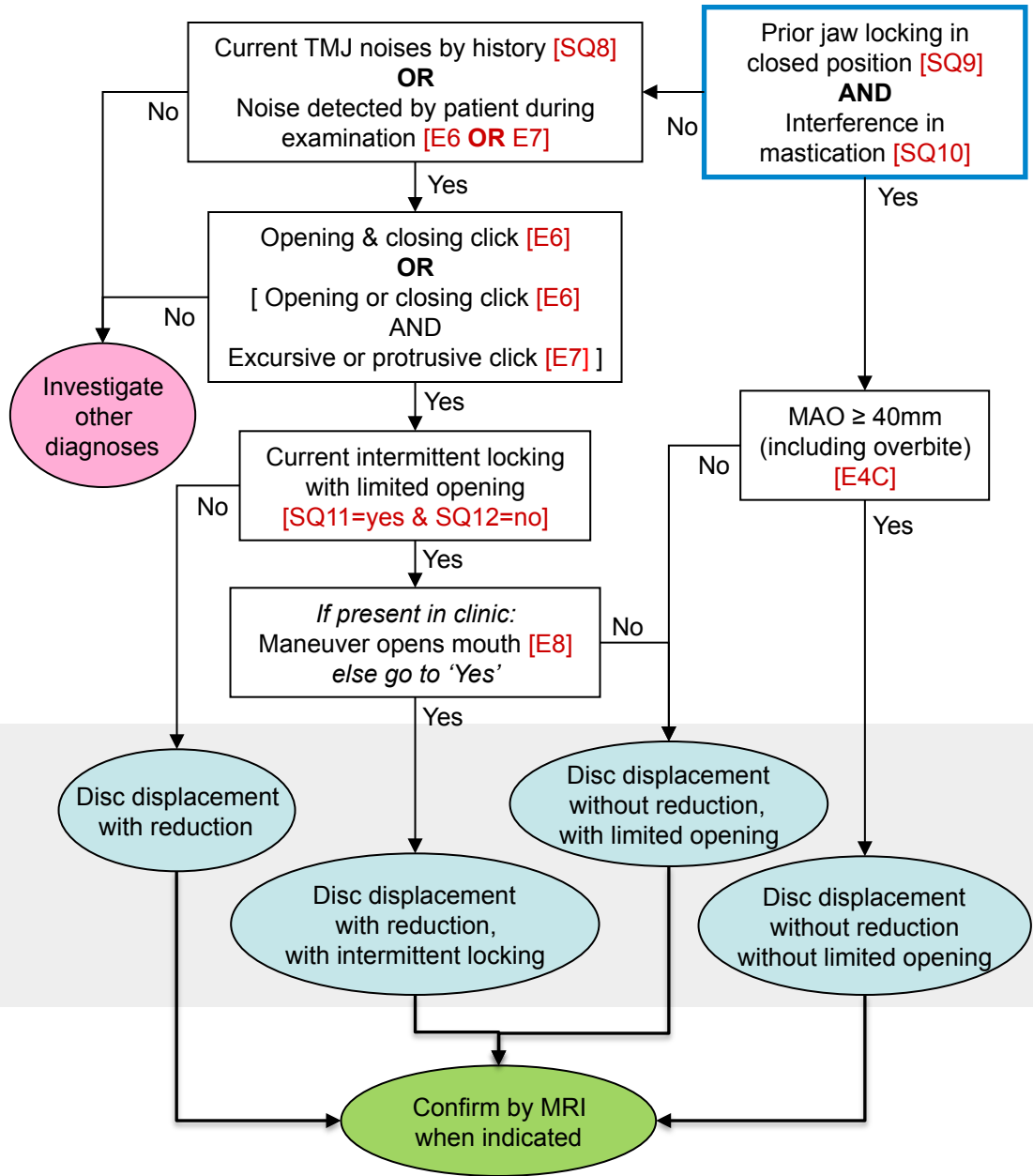
Diagnostic Criteria for Temporomandibular Disorders (DC/TMD): Diagnostic Decision Tree

Intra-articular Joint Disorders

Degenerative Joint Disorder

HISTORY & EXAMINATION

Start at each blue box



CLINICAL DIAGNOSIS

IMAGING

