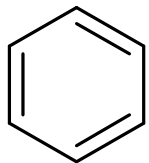
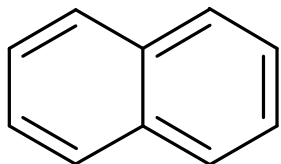


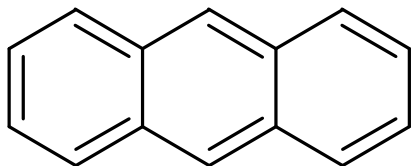
Idrocarburi policiclici aromatici



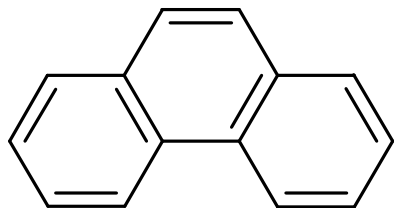
Benzene C_6H_6
H/C : 1



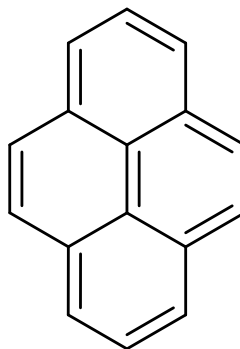
Naftalene $C_{10}H_8$
H/C : 0.8



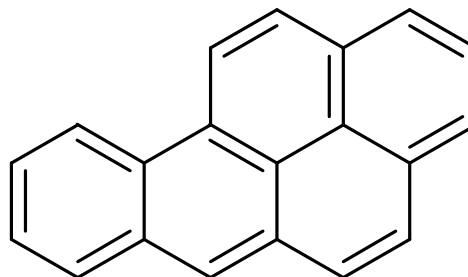
Antracene $C_{14}H_{10}$
H/C : 0.71



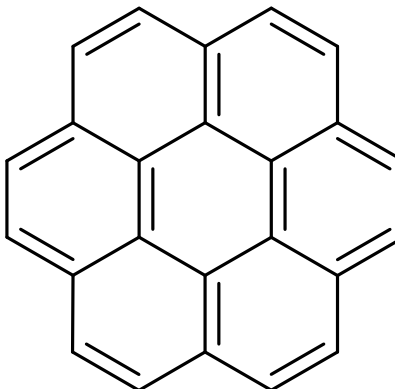
Fenantrene $C_{14}H_{10}$
H/C : 0.71



Pirene $C_{16}H_{10}$
H/C : 0.63



3,4-Benzopirene $C_{20}H_{12}$
H/C : 0.6



Coronene $C_{24}H_{12}$
H/C : 0.5