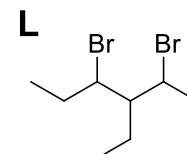
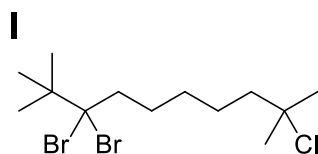
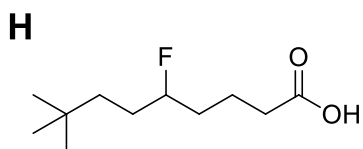
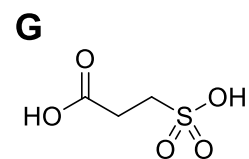
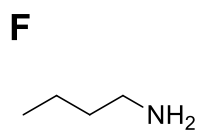
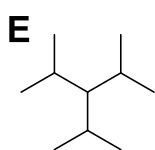
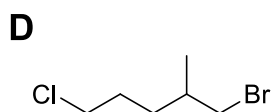
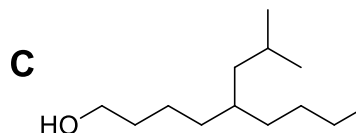
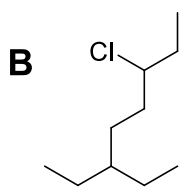
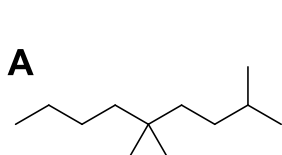


ESERCIZI NOMENCLATURA 1

1. Assegnate ad ognuna delle seguenti strutture il nome IUPAC:



2. Disegnate le strutture corrispondenti ai seguenti nomi IUPAC:

- A) 5-etil-3,4,7-trimetildecano
- B) 1-cloro-2,5-dimetilesano
- C) 5-propilnonanolo
- D) dietilammina
- E) 2,5-dibromo-3,4-dimetilesano
- F) 4-etil-3-metil-nonilammina
- G) 1,1,1-tricloroetano
- H) diclorometano
- I) etil etanoato
- L) 2,2,4,5-tetrametilesano