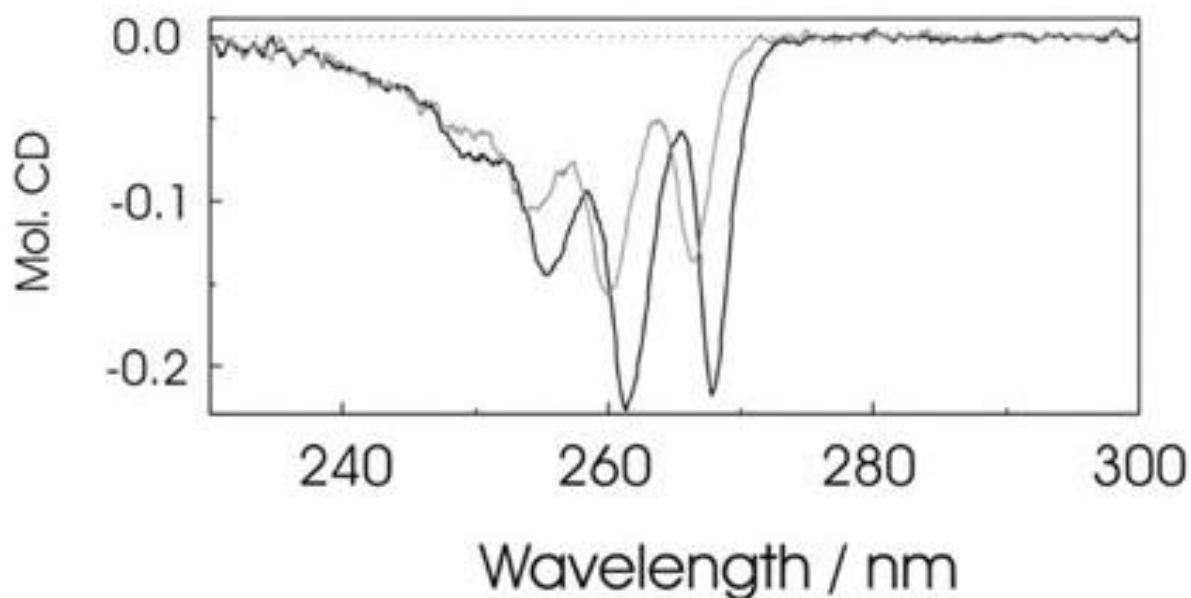


DICROISMO CIRCOLARE di R-1-feniletanolo

in cicloesano (nero) o acqua (grigio)

C = 1 mM

Cammino ottico = 2 cm



(The band at longest wavelength is assigned to the true band origin and is associated with $\pi - \pi^*$ excitation into the $1B_2$ ($1L_b$) electronic state under local C_{2v} symmetry; the absorption bands displaying small Cotton effects have been associated with the excitation of (locally) non-totally symmetric vibrational modes accessing totally symmetric vibronic levels).

Ref.

1. N. A. MacLeod et al. *Phys. Chem. Chem. Phys.* 2005, 7, 1432-1440.
2. H. E. Smith, *Chem. Rev.*, 1998, 98, 1709.