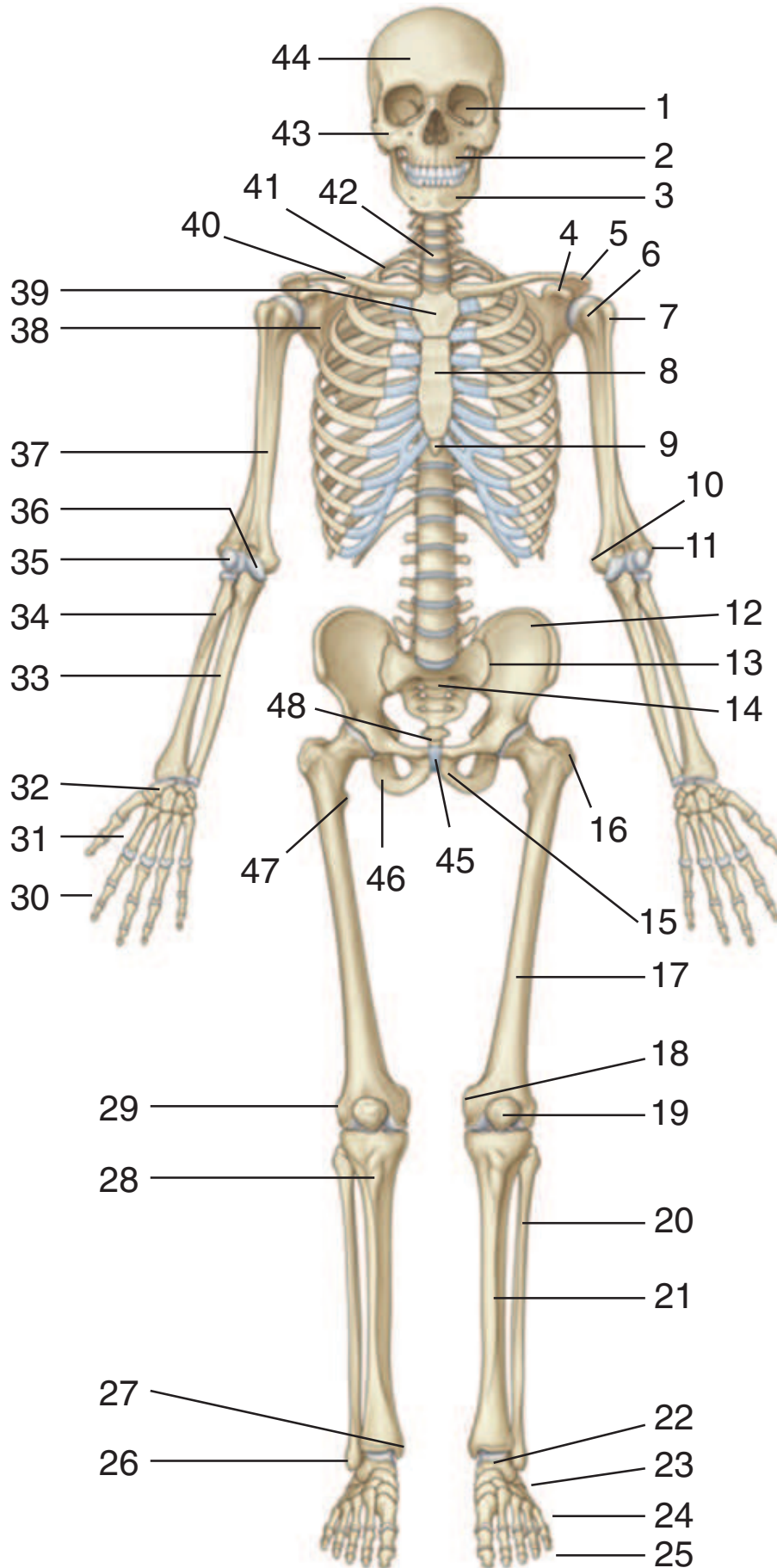




SKELETON: ANTERIOR VIEW

Identify the indicated structures.



SKELETON: ANTERIOR VIEW



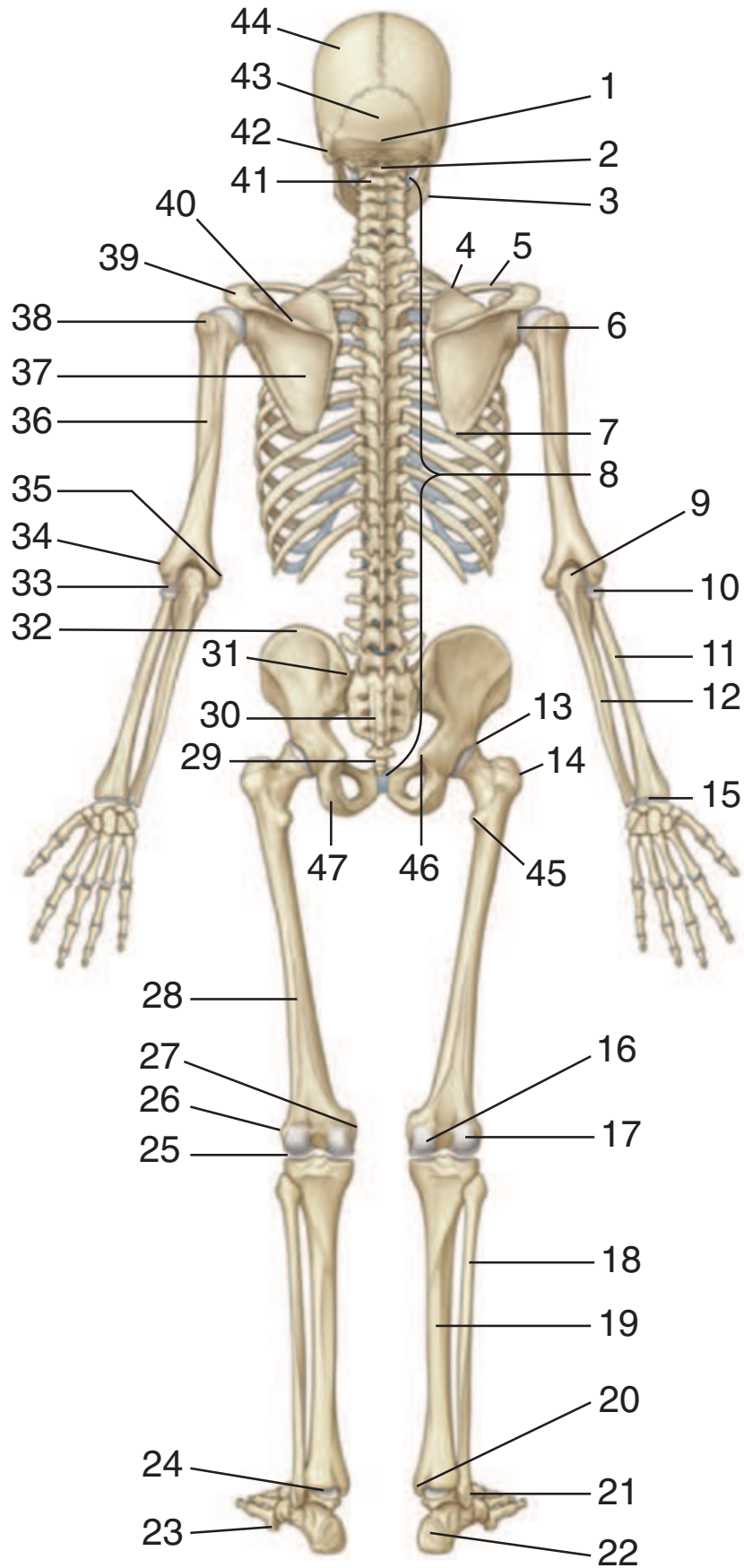
1. Orbit
2. Maxilla
3. Mandible
4. Coracoid process
5. Acromion
6. Lesser tubercle
7. Greater tubercle
8. Body of sternum
9. Xiphoid process of sternum
10. Medial epicondyle
(of humerus)
11. Lateral epicondyle
(of humerus)
12. Ilium
13. Sacroiliac joint
14. Sacrum
15. Pubis
16. Greater trochanter
17. Femur
18. Medial epicondyle (of femur)
19. Patella
20. Fibula
21. Tibia
22. Talus
23. Tarsal bones
24. Metatarsals
25. Phalanges
26. Lateral malleolus
27. Medial malleolus
28. Tibial tuberosity
29. Lateral epicondyle (of femur)
30. Phalanges
31. Metacarpals
32. Carpal bones
33. Ulna
34. Radius
35. Capitulum
36. Trochlea
37. Humerus
38. Scapula
39. Manubrium of sternum
40. Clavicle
41. Rib I
42. CVII
43. Zygomatic bone
44. Frontal bone
45. Pubic symphysis
46. Ischium
47. Lesser trochanter
48. Coccyx

Figure from Gray's Atlas of Anatomy, 2nd edition, p. 6.



SKELETON: POSTERIOR VIEW

Identify the indicated structures.



SKELETON: POSTERIOR VIEW



1. External occipital protuberance
2. C1 (atlas)
3. Angle of mandible
4. Superior angle of scapula
5. Clavicle
6. Shoulder joint
7. Inferior angle of scapula
8. Vertebral column
9. Olecranon
10. Head of radius
11. Radius
12. Ulna
13. Hip joint
14. Greater trochanter
15. Wrist joint
16. Medial condyle (of femur)
17. Lateral condyle (of femur)
18. Fibula
19. Tibia
20. Medial malleolus
21. Lateral malleolus
22. Calcaneus
23. Tuberosity of fifth metatarsal
24. Ankle joint
25. Knee joint
26. Lateral epicondyle (of femur)
27. Medial epicondyle (of femur)
28. Femur
29. Coccyx
30. Sacrum
31. Posterior superior iliac spine
32. Iliac crest
33. Elbow joint
34. Lateral epicondyle (of humerus)
35. Medial epicondyle (of humerus)
36. Humerus
37. Scapula
38. Greater tubercle
39. Acromion
40. Spine of scapula
41. C2 (axis)
42. Mastoid process
43. Occipital bone
44. Parietal bone
45. Lesser trochanter
46. Ischial spine
47. Ischial tuberosity

Figure from Gray's Atlas of Anatomy, 2nd edition, p. 7.