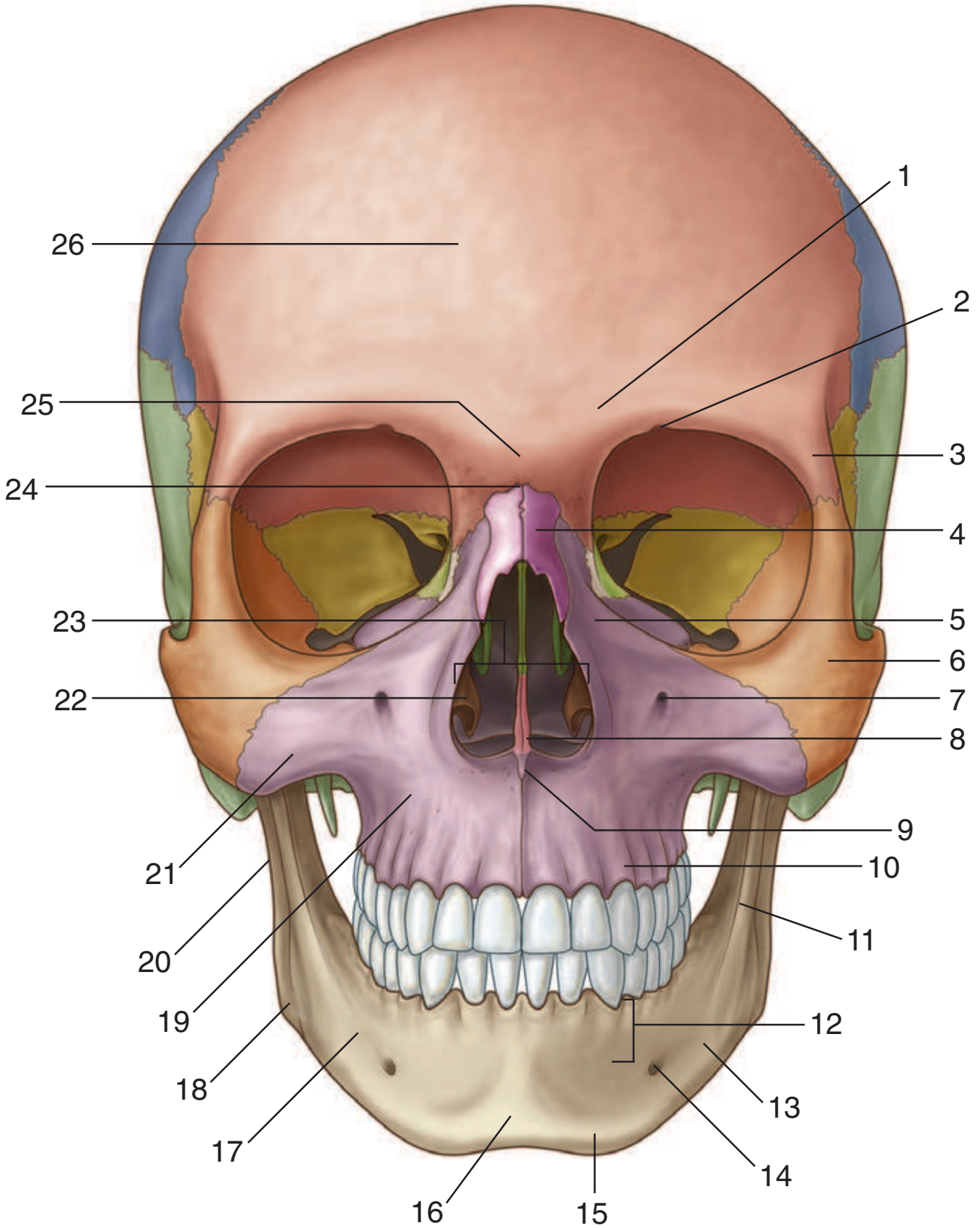




Identify the indicated features and bones in this anterior view of the skull.



SKULL: ANTERIOR VIEW



1. Superciliary arch
2. Supra-orbital notch (foramen)
3. Zygomatic process (of frontal bone)
4. Nasal bone
5. Frontal process (of maxilla)
6. Zygomatic bone
7. Infra-orbital foramen
8. Nasal crest
9. Anterior nasal spine
10. Alveolar process (of maxilla)
11. Oblique line (of mandible)
12. Alveolar part (of mandible)
13. Mandible
14. Mental foramen
15. Mental tubercle
16. Mental protuberance
17. Body of mandible
18. Angle of mandible
19. Maxilla
20. Ramus of mandible
21. Zygomatic process (of maxilla)
22. Inferior nasal concha
23. Piriform aperture
24. Nasion
25. Glabella
26. Frontal bone

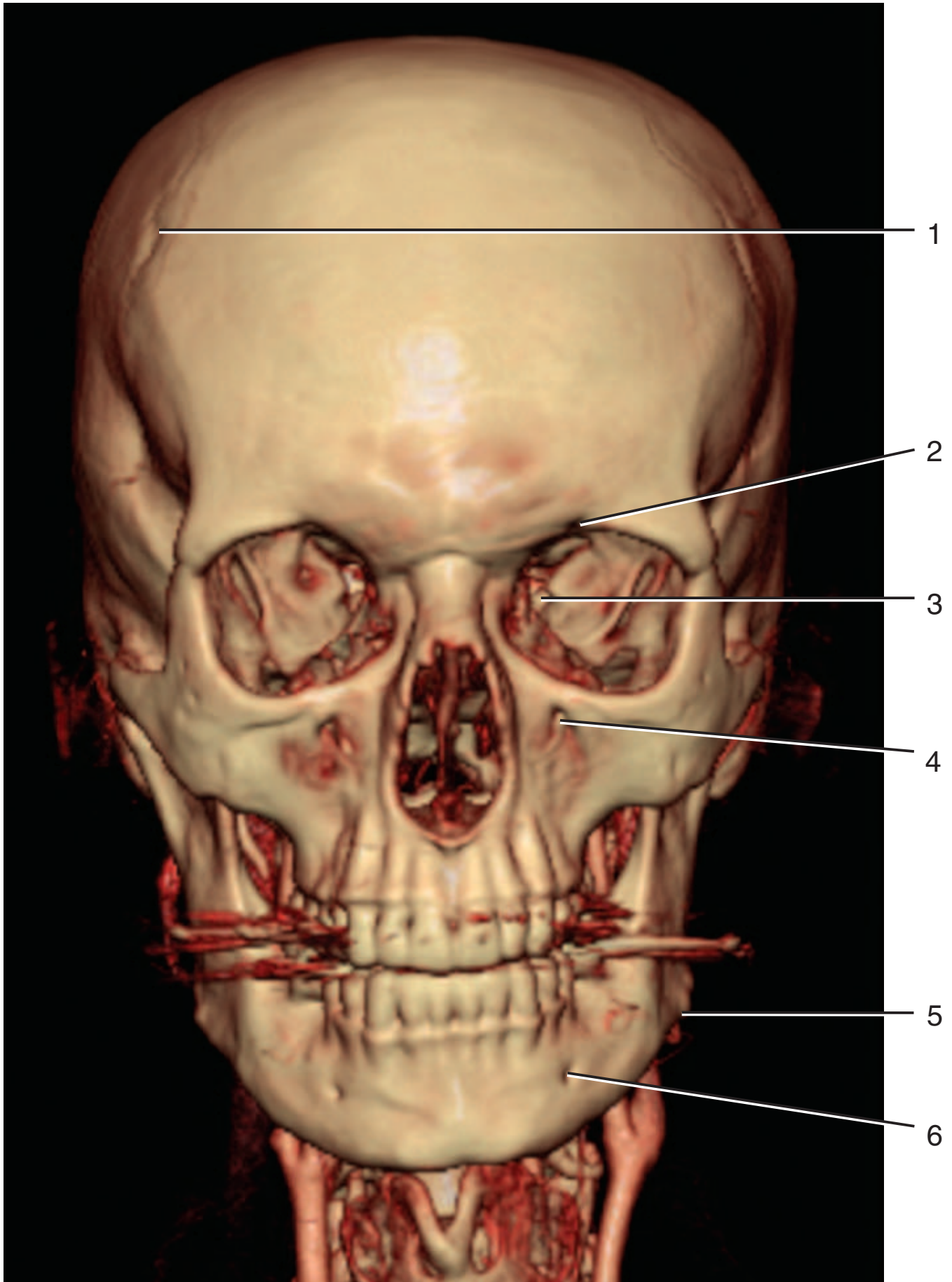
Figure from Gray's Anatomy for Students, 3rd edition, p. 855.



MULTIDETECTOR CT: ANTERIOR VIEW OF SKULL



Identify the indicated structures.





MULTIDETECTOR CT: ANTERIOR VIEW OF SKULL

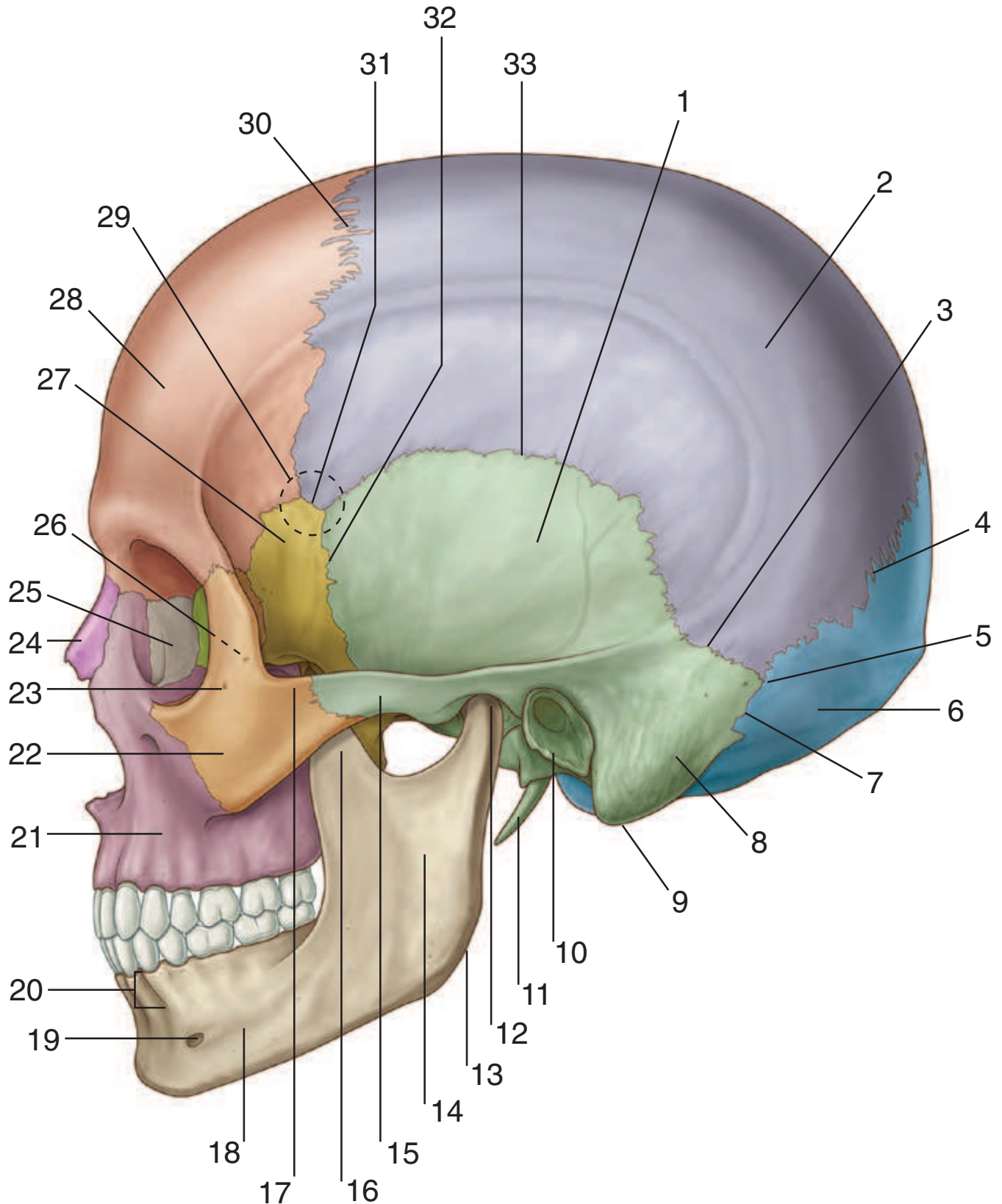


1. Coronal suture
2. Supra-orbital notch (foramen)
3. Superior orbital fissure
4. Infra-orbital foramen
5. Angle of mandible
6. Mental foramen

Figure from Gray's Basic Anatomy, p. 417.



Identify the indicated features and bones in this lateral view of the skull.



SKULL: LATERAL VIEW



1. Squamous part (of temporal bone)
2. Parietal bone
3. Parietomastoid suture
4. Lambdoid suture
5. Asterion
6. Occipital bone
7. Occipitomastoid suture
8. Mastoid part of temporal bone
9. Mastoid process
10. Tympanic part (of temporal bone)
11. Styloid process
12. Condylar process (of mandible)
13. Angle (of mandible)
14. Ramus of mandible
15. Zygomatic process (of temporal bone)
16. Coronoid process (of mandible)
17. Temporal process (of zygomatic bone)
18. Body of mandible
19. Mental foramen
20. Alveolar part (of mandible)
21. Maxilla
22. Zygomatic bone
23. Zygomaticofacial foramen
24. Nasal bone
25. Lacrimal bone
26. Zygomaticotemporal foramen (on deep surface of zygomatic bone)
27. Greater wing (of sphenoid bone)
28. Frontal bone
29. Pterion
30. Coronal suture
31. Sphenoparietal suture
32. Sphenosquamous suture
33. Squamous suture

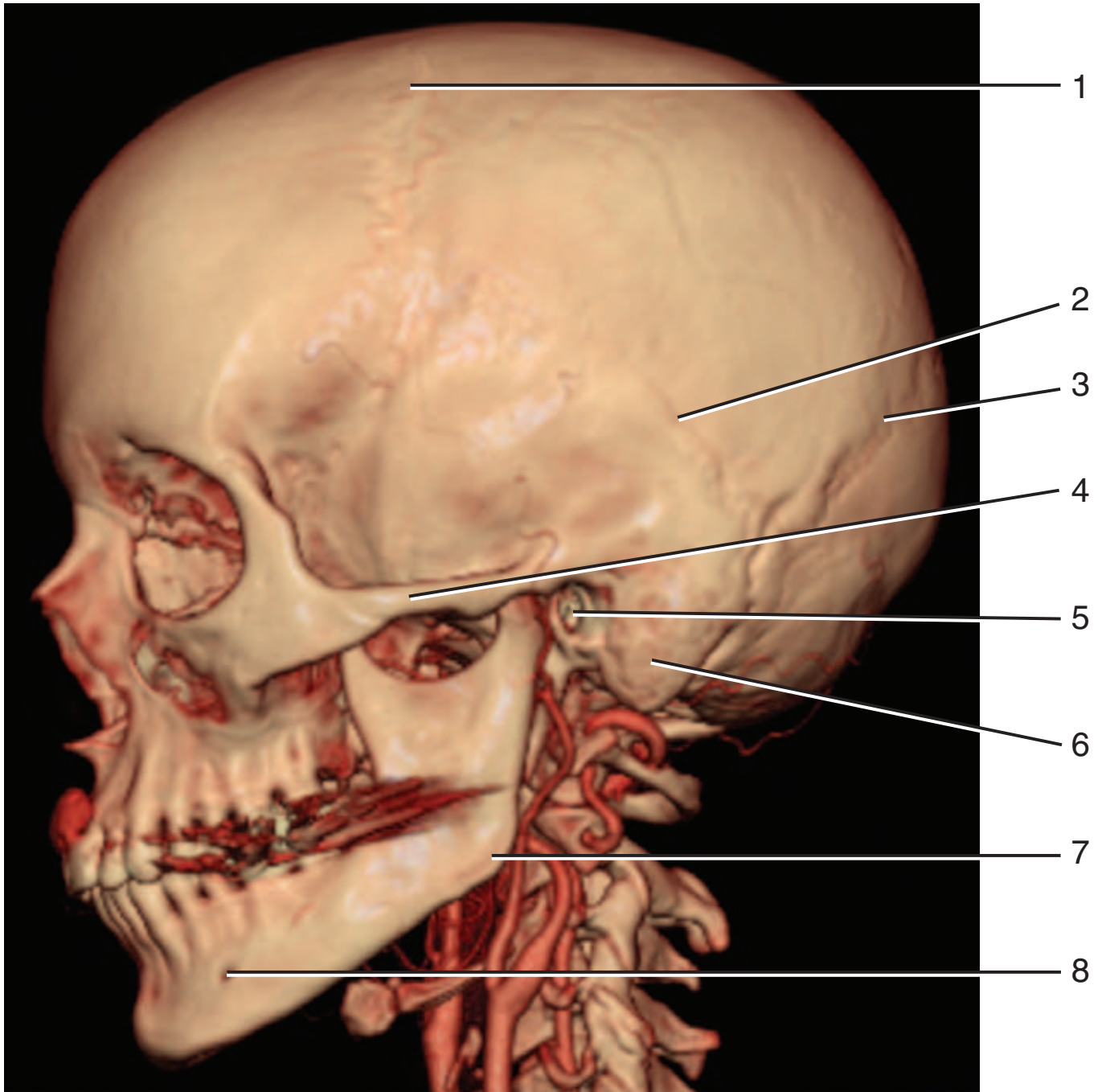
Figure from Gray's Anatomy for Students, 3rd edition, p. 857.



MULTIDETECTOR CT: LATERAL VIEW OF SKULL



Identify the indicated structures.





MULTIDETECTOR CT: LATERAL VIEW OF SKULL



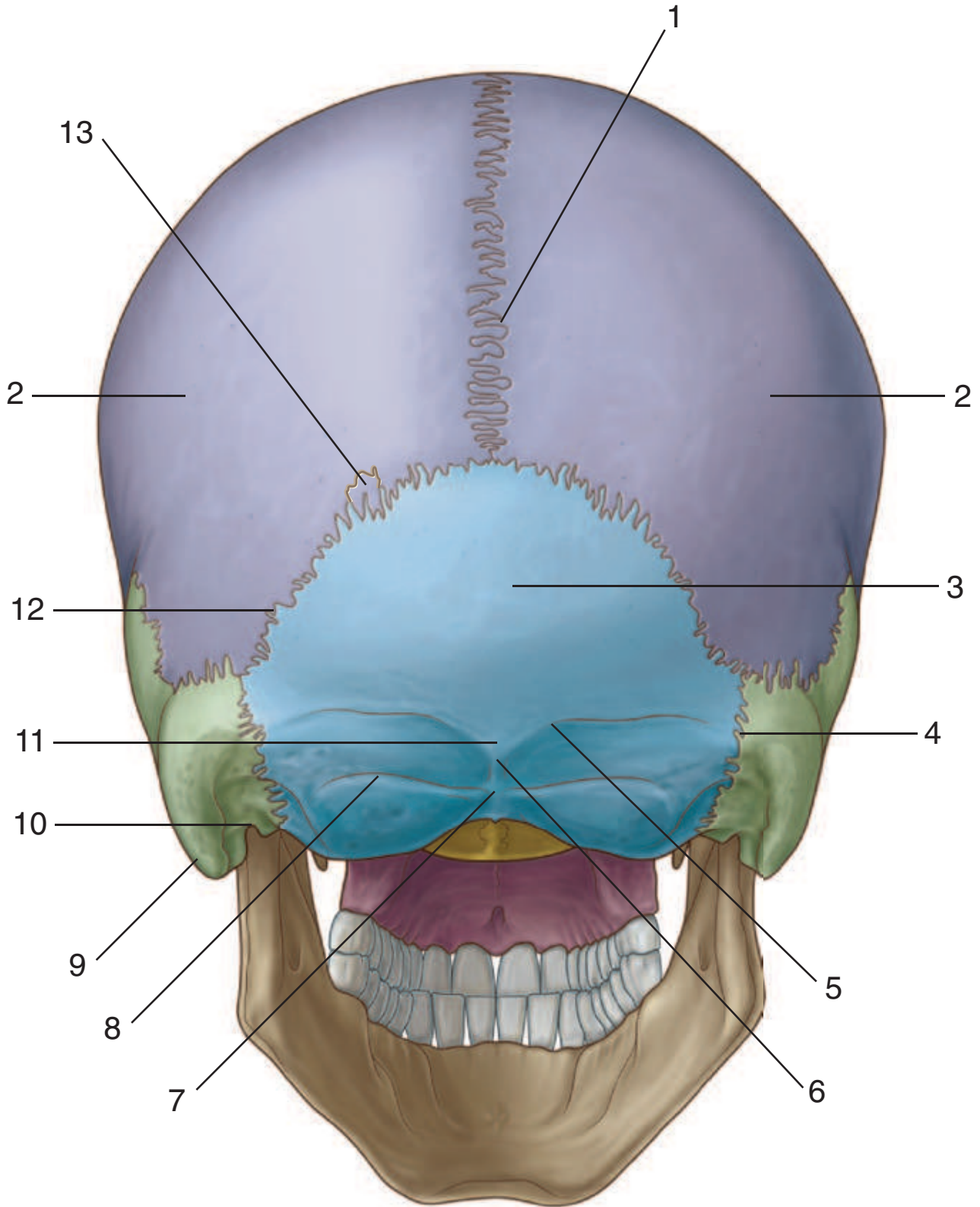
1. Coronal suture
2. Squamous suture
3. Lamboid suture
4. Zygomatic arch
5. External acoustic meatus
6. Mastoid process
7. Angle of mandible
8. Mental foramen

Figure from Gray's Basic Anatomy, p. 419.



SKULL: POSTERIOR VIEW

Identify the indicated features and bones in this posterior view of the skull.



SKULL: POSTERIOR VIEW

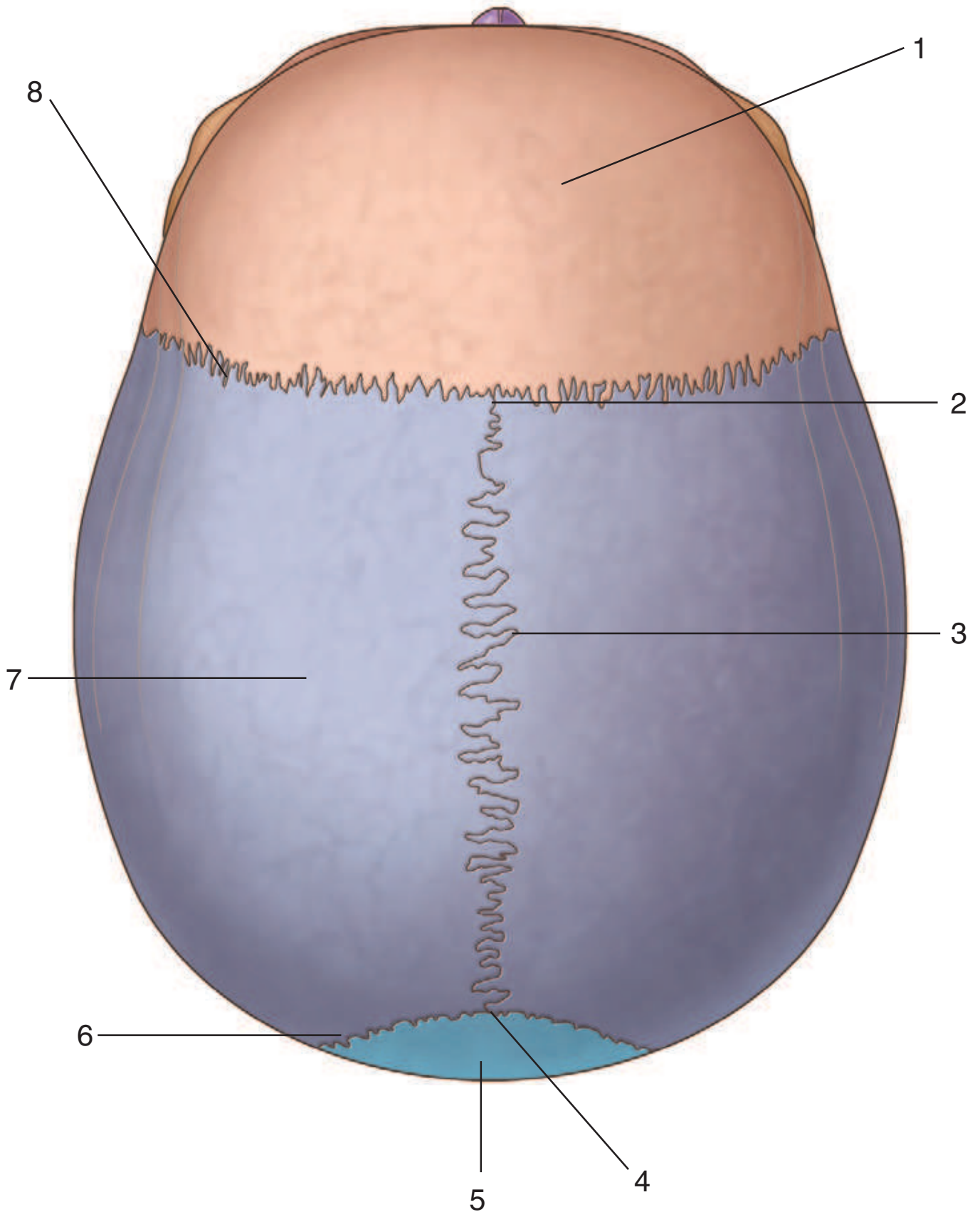


1. Sagittal suture
2. Parietal bone
3. Squamous part (of occipital bone)
4. Occipitomastoid suture
5. Superior nuchal line
6. Inion
7. External occipital crest
8. Inferior nuchal line
9. Mastoid process
10. Mastoid notch
11. External occipital protuberance
12. Lambdoid suture
13. Sutural bone

Figure from Gray's Anatomy for Students, 3rd edition, p. 859.



Identify the indicated features and bones in this superior view of the skull.



SKULL: SUPERIOR VIEW



1. Frontal bone
2. Bregma
3. Sagittal suture
4. Lambda
5. Occipital bone
6. Lambdoid suture
7. Parietal bone
8. Coronal suture

Figure from Gray's Anatomy for Students, 3rd edition, p. 860.



Identify the indicated structures in this inferior view of the skull.

