

# Morphoneotectonic and lithological map of the eastern sector of the Gulf of Trieste (NE ITALY)

Sara BIOLCHI<sup>1</sup>, Stefano FURLANI<sup>1</sup>, Stefano COVELLI<sup>1</sup>,  
Martina BUSETTI<sup>2</sup>, Franco CUCCHI<sup>1</sup>

<sup>1</sup> Department of Mathematics and Geosciences, University of Trieste, Trieste (Italy)  
<sup>2</sup> Istituto Nazionale di Oceanografia e Geofisica Sperimentale - OGS, Trieste (Italy)  
Corresponding author: sbiolchi@units.it

© Journal of Maps

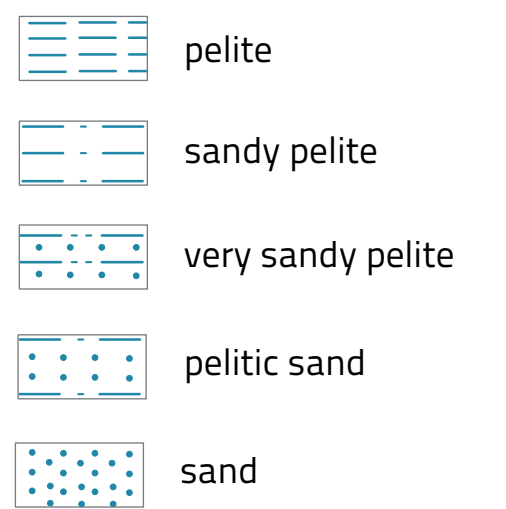
## GEOGRAPHICAL SETTING



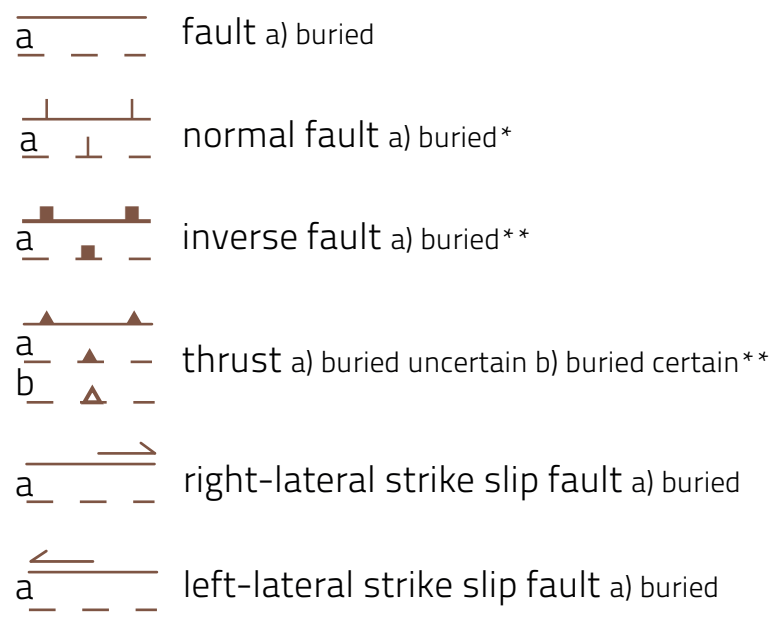
## Geological Units



## Marine sediments



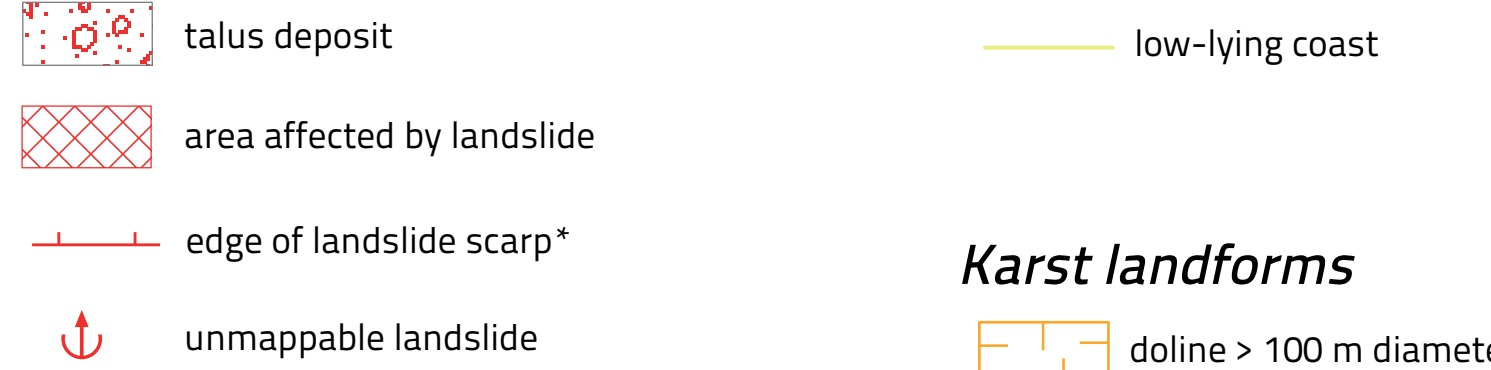
## Structural elements and landforms



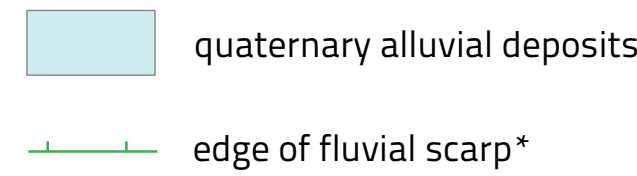
## Coastal landforms and deposits



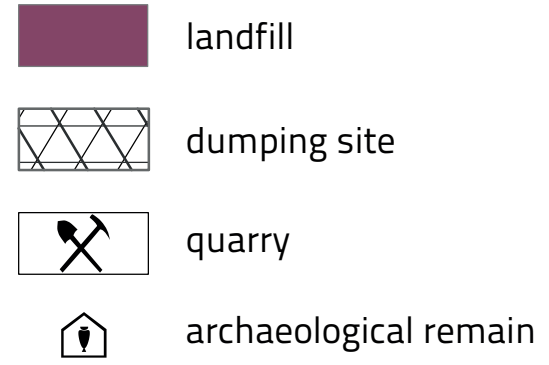
## Gravity-induced landforms and deposits



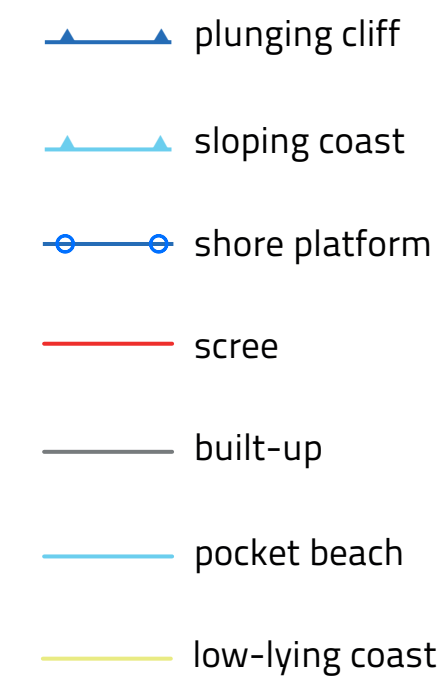
## Fluvial landforms and deposits



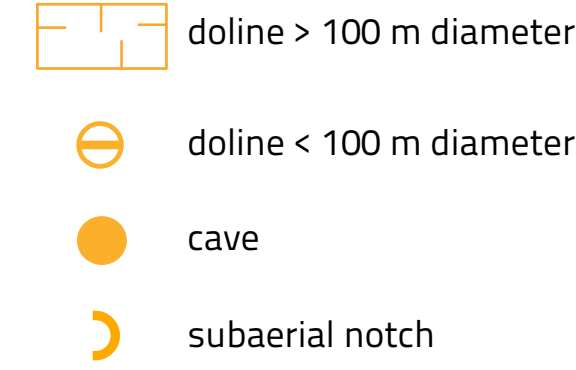
## Anthropogenic landforms and deposits



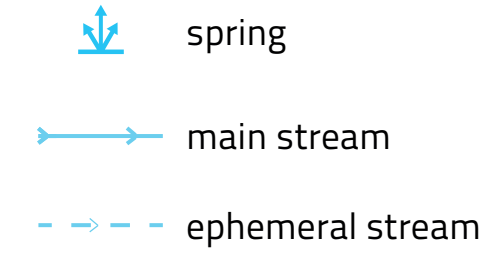
## Geomorphological classification of the coastline



## Karst landforms



## Hydrography

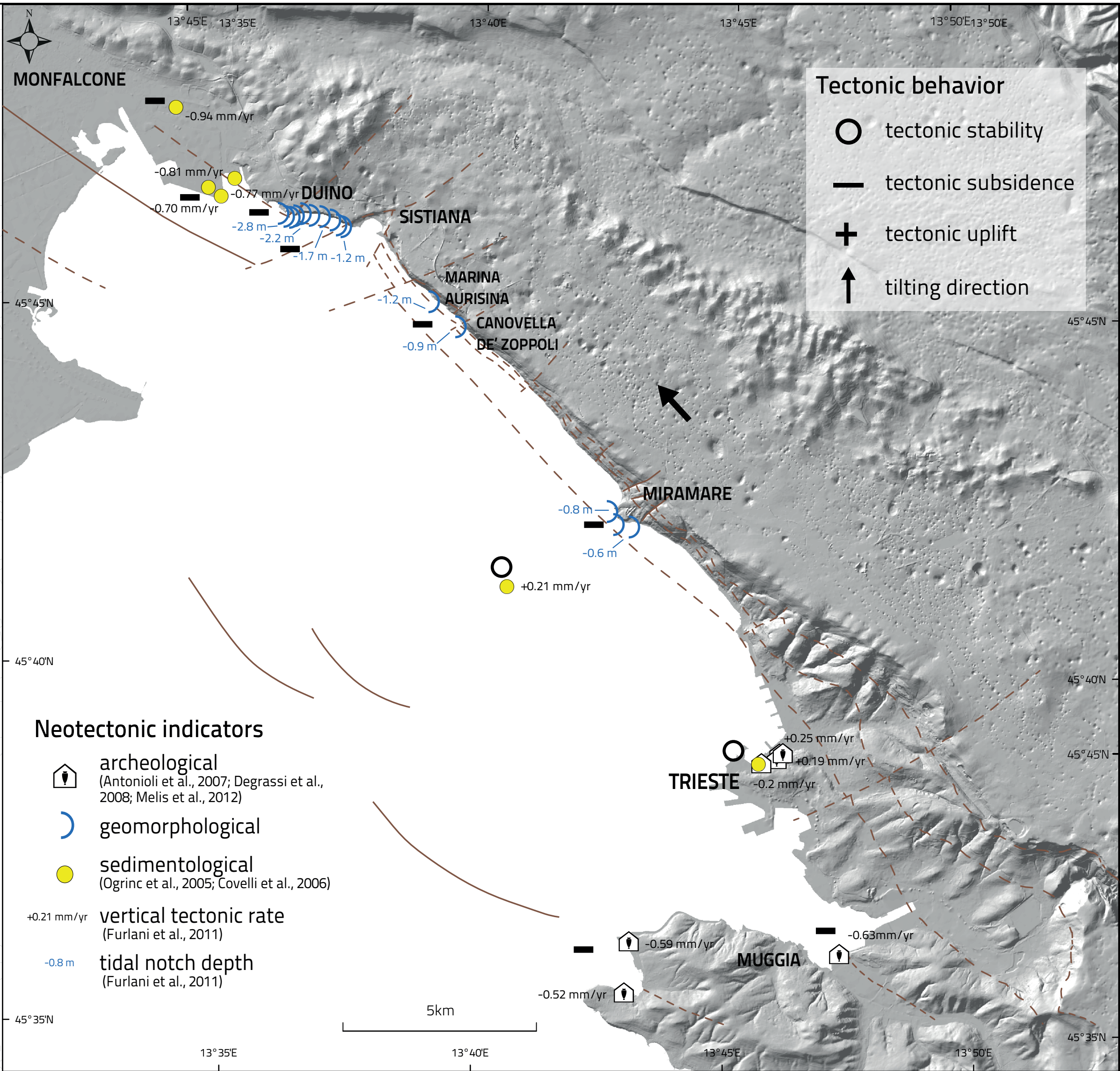
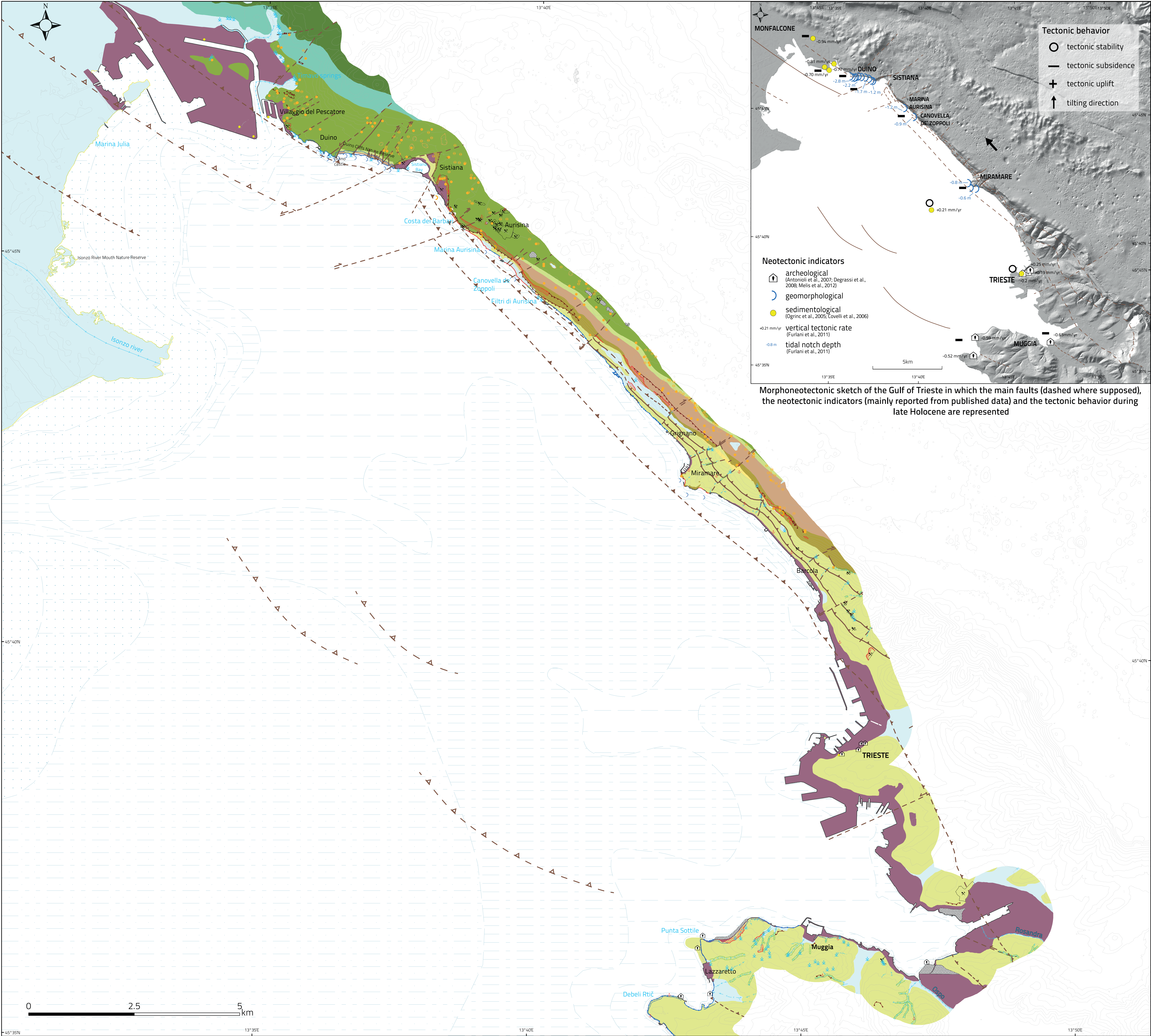


Projection: TRANSVERSE MERCATOR

DATUM: D\_WGS\_1984

1:30,000

printed size



Morphoneotectonic sketch of the Gulf of Trieste in which the main faults (dashed where supposed), the neotectonic indicators (mainly reported from published data) and the tectonic behavior during late Holocene are represented

\* Dashes, triangles and squares are facing the lowered part

\*\* Dashes, triangles and squares are facing the hanging wall