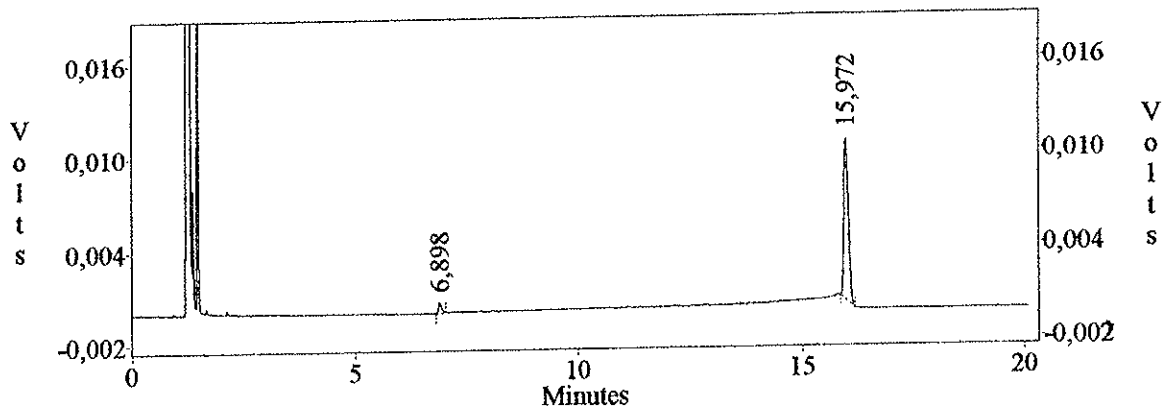


acetoacetato di etile

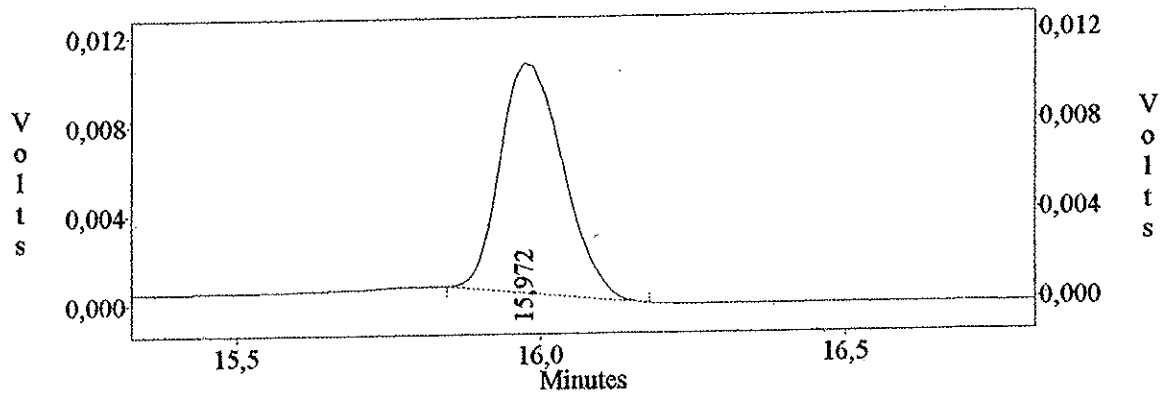
File : c:\class-vp\chrom\patty\Stk
Method : c:\class-vp\methods\Patty.met
Sample ID : acetacetato
Printed : Jan 23, 2007 16:39:15
User : System

b-ciclodestrine
condizioni
70°C per 10 min
2°C/min 150°

c:\class-vp\chrom\patty\Stk -- Channel A



c:\class-vp\chrom\patty\Stk -- Channel A



Channel A Results

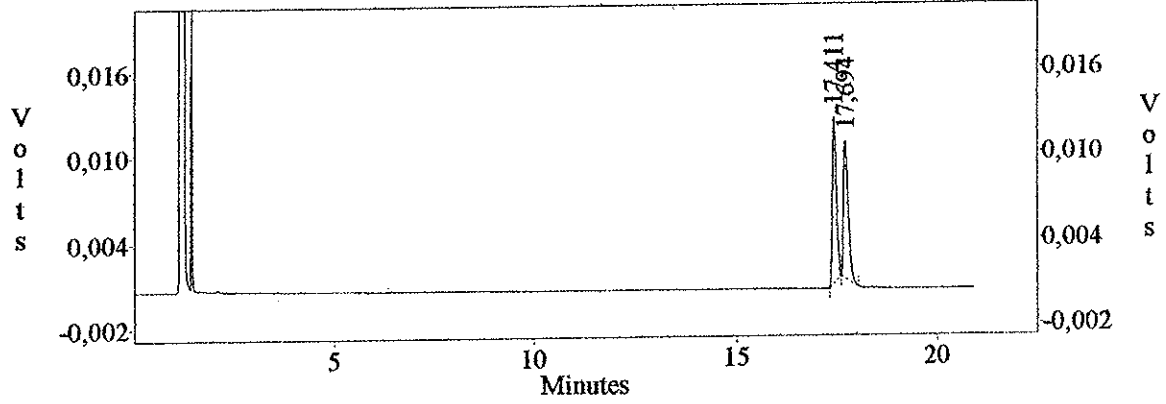
Peak	Time	Area	Area %
1	6,90	2948	3,815
2	15,97	74329	96,185
Totals :		77277	100,000

alcol racemo

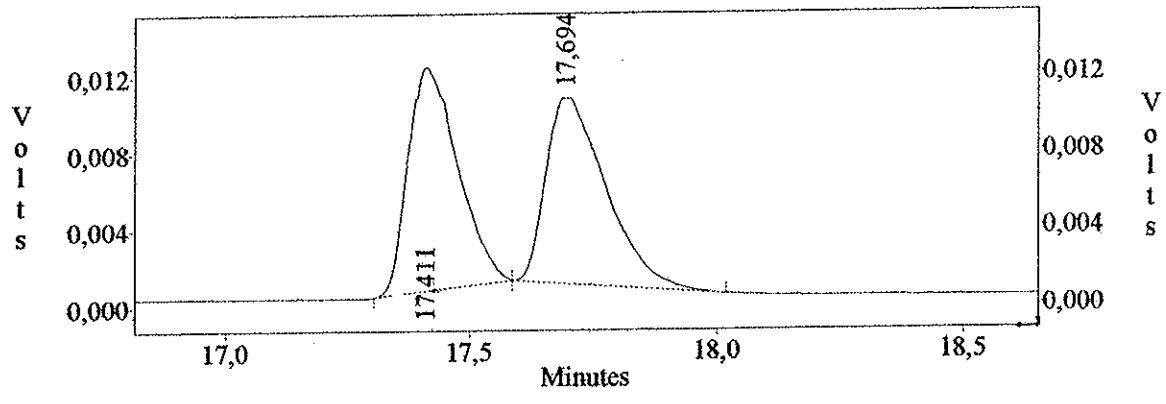
File : c:\class-vp\chrom\patty\Stal
Method : c:\class-vp\methods\Patty.met
Sample ID : alcol racemo
Printed : Jan 24, 2007 14:57:21
User : System

b-ciclodestrine
condizioni
70°C per 10 min
2°C/min 150°

c:\class-vp\chrom\patty\Stal -- Channel A



c:\class-vp\chrom\patty\Stal -- Channel A



Channel A Results

Peak	Time	Area	Area %
1	17,41	82277	50,461
2	17,69	80775	49,539
Totals :		163052	100,000