

Lezione 6 – La Cute

Preparati istologici ONLINE:

<http://www.biocfarm.unibo.it/aunmicro/index.html>

<http://web.unife.it/cdl/istomed/photo.htm>

La Cute

**L'organo più esteso dell'organismo (16% peso corporeo)
riveste anche le mucose (organi genitali, apparato digerente,
prime vie respiratorie, palpebre,
congiuntive, orecchio e timpano)**

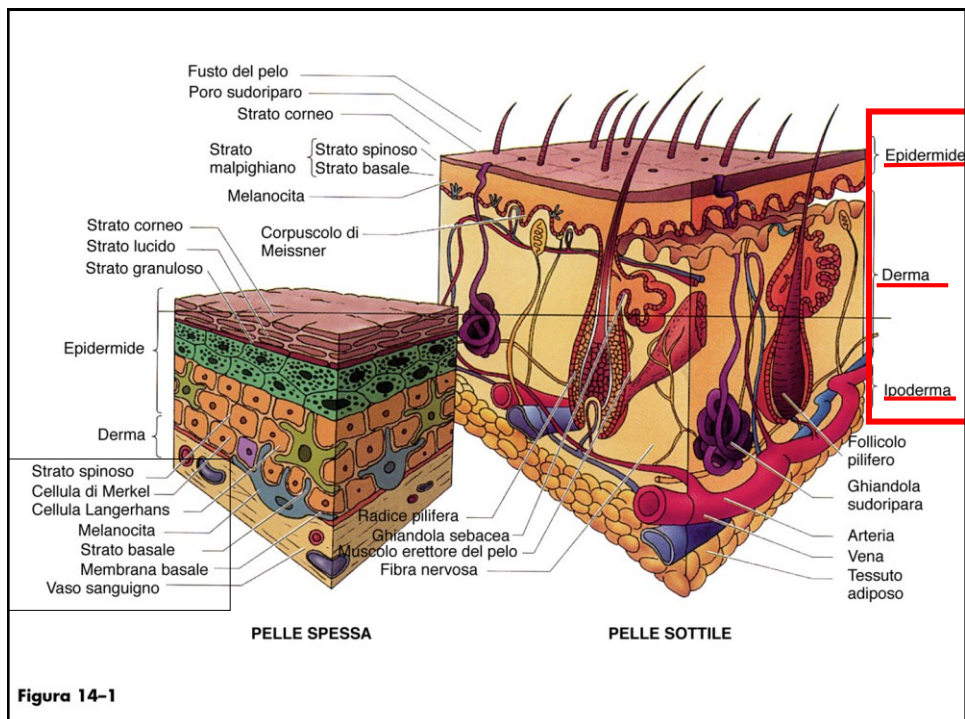
Annessi cutanei: - ghiandole sudoripare e sebacee
- peli
- unghie

Struttura istologica:

- epidermide (epitelio squamoso pluristratificato cheratinizzato*)
- derma sottostante (connettivo fibroso irregolare°)

- Funzioni:**
- 1) protezione da traumi, infezioni e disidratazione
 - 2) regolazione temperatura corporea
 - 3) recezione sensoriale (tatto, calore, dolore)
 - 4) secrezione delle ghiandole sebacee
 - 5) assorbimento raggi UV (sintesi vit. D)

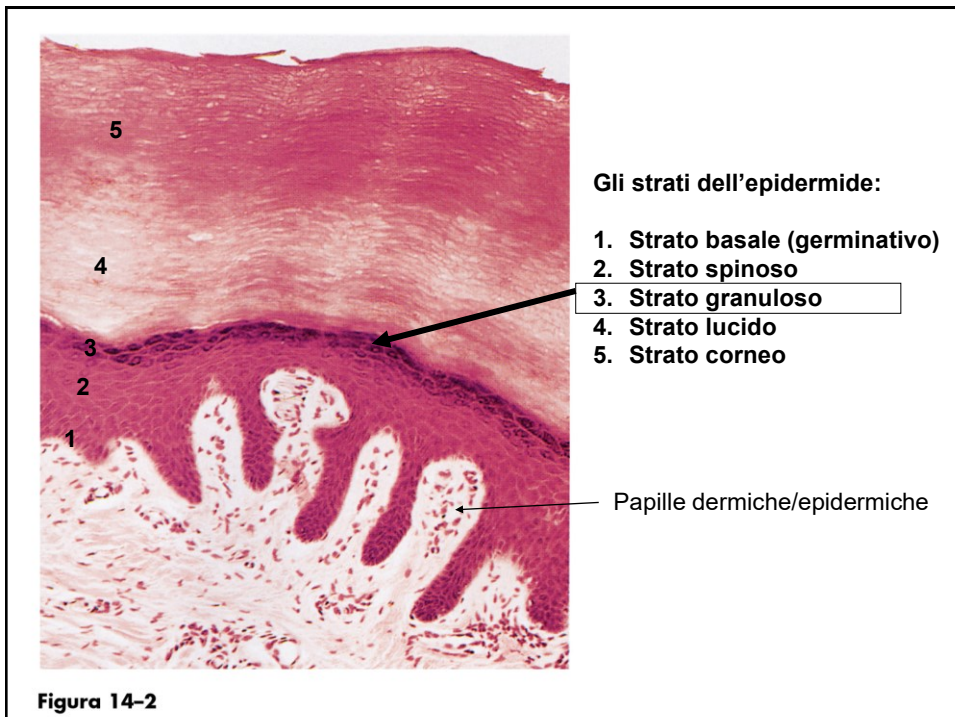
*= derivazione dall'ectoderma embrionale
 ° = derivazione dal mesoderma embrionale

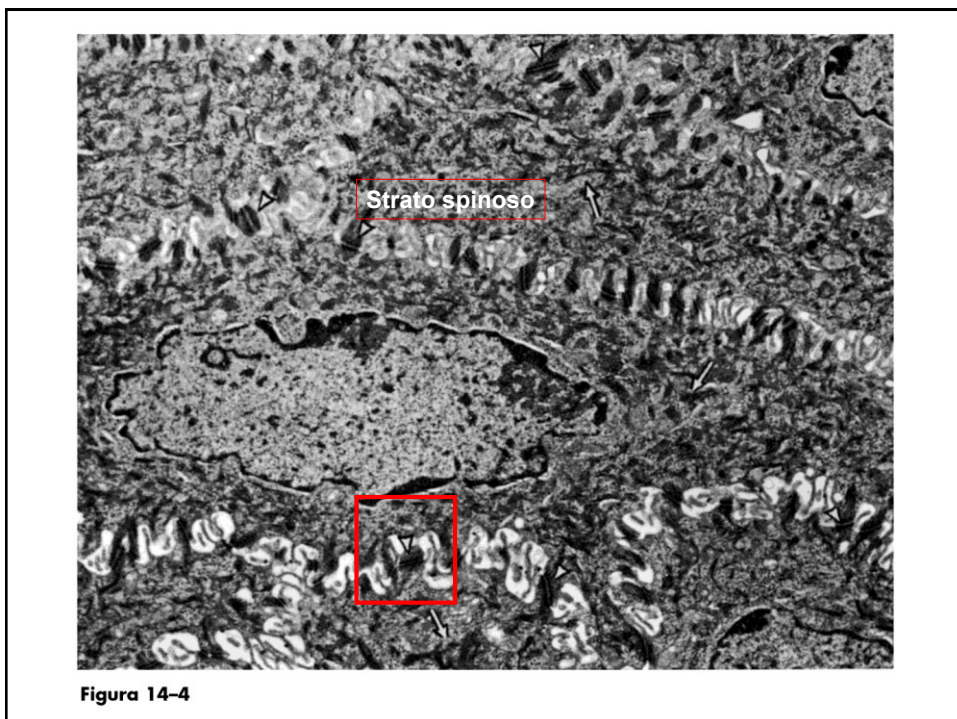
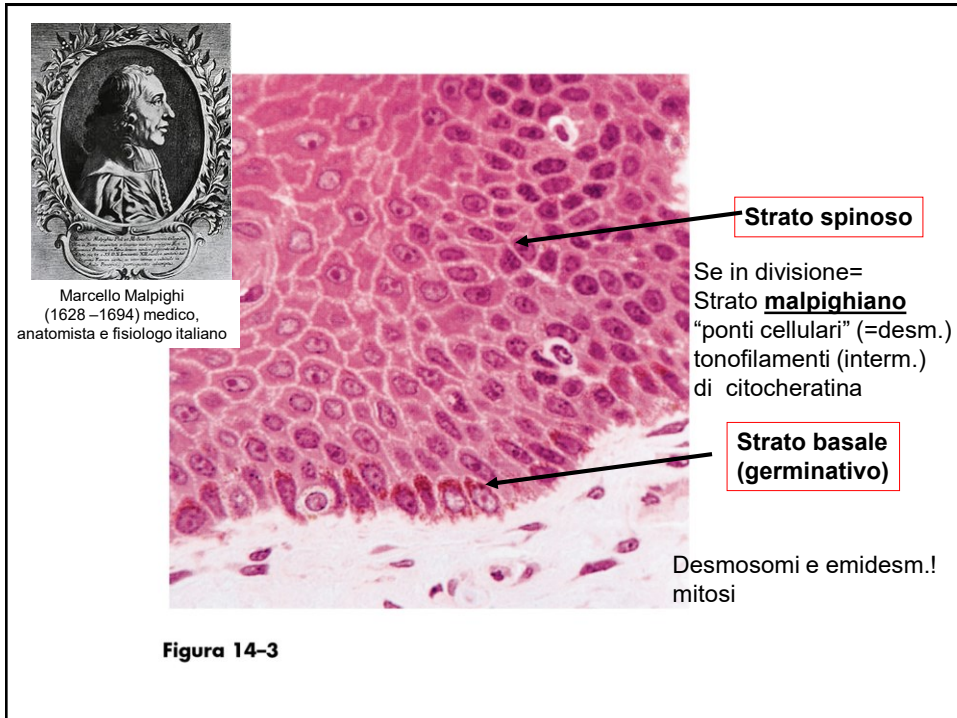


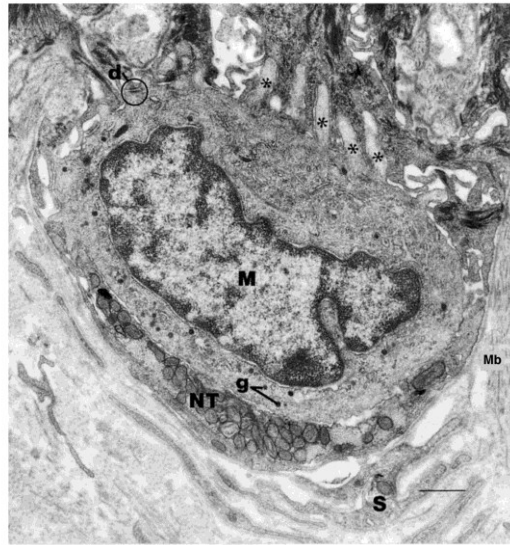
All'interno dell'epidermide si riconoscono 4 tipi di cellule:

- **Cheratinociti** (5 strati, più abbondante tipo cellulare, rinnovo continuo)
- **melanociti**
- **cellule di Langherans**
- **cellule di Merkel**

-Spessore variabile dell'epidermide 0,07-0,12 mm fino a 1,4 mm







Meccanocettori (tatto)

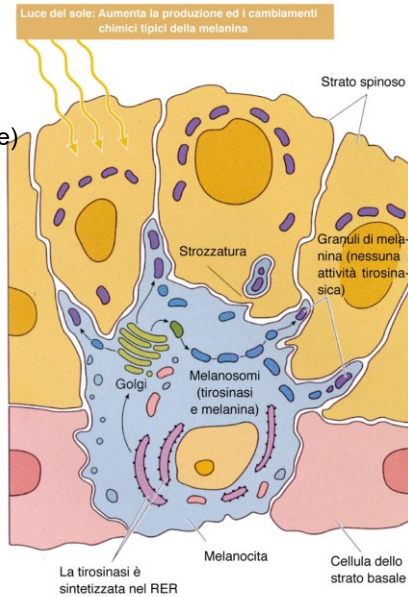
Figura 14-5

Cellula di Merkel con Nervo Terminale

Melanociti
(deriv. Cresta neurale)

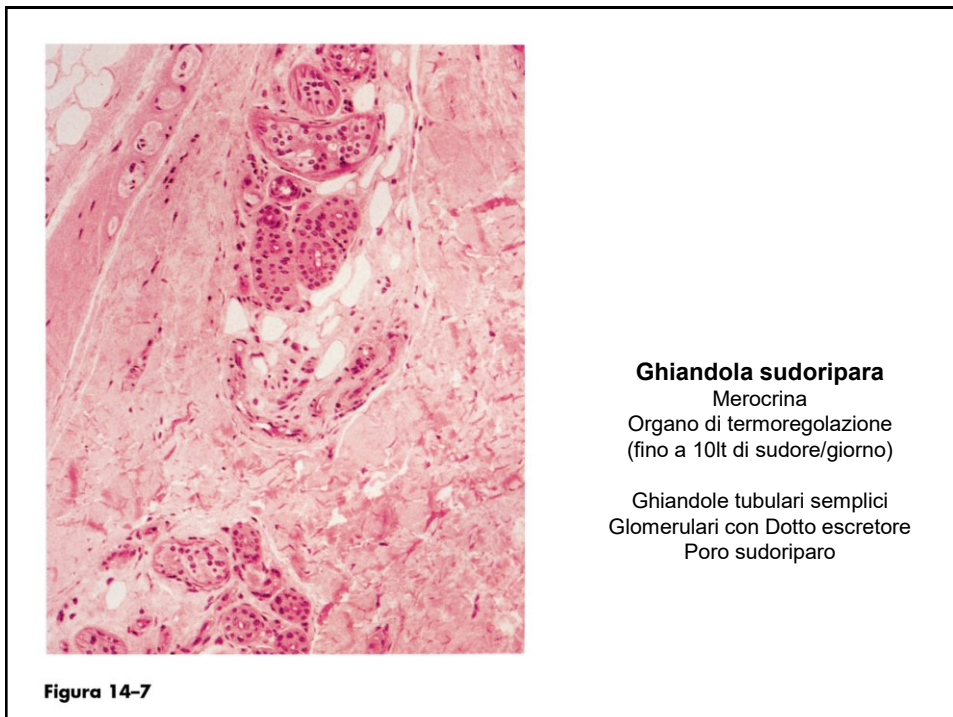
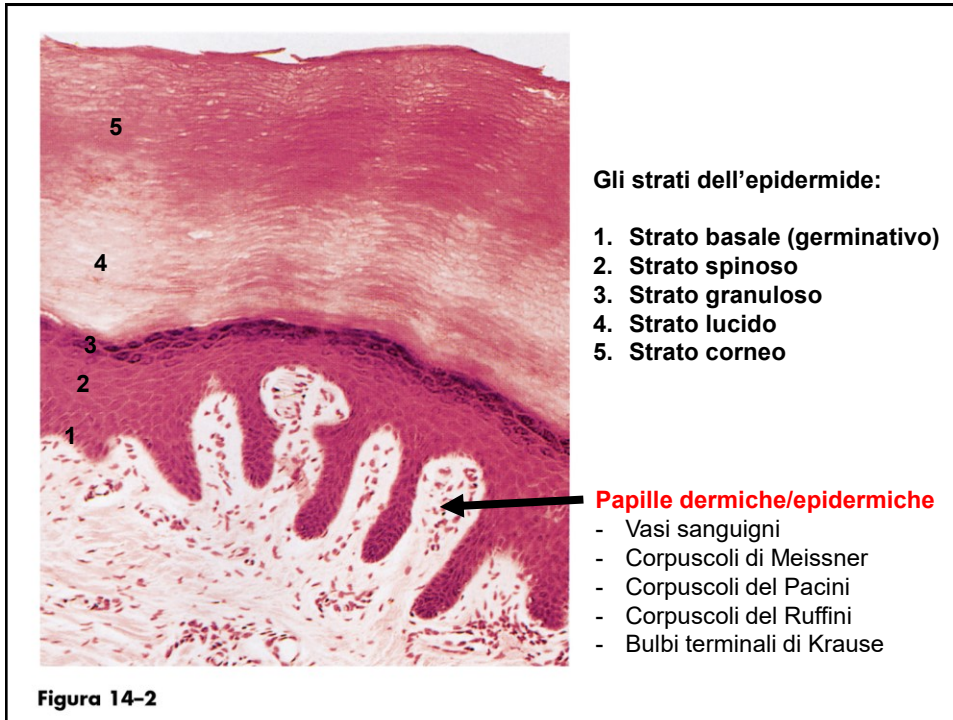
Melanina
↑
Tirosinasi-tirosina

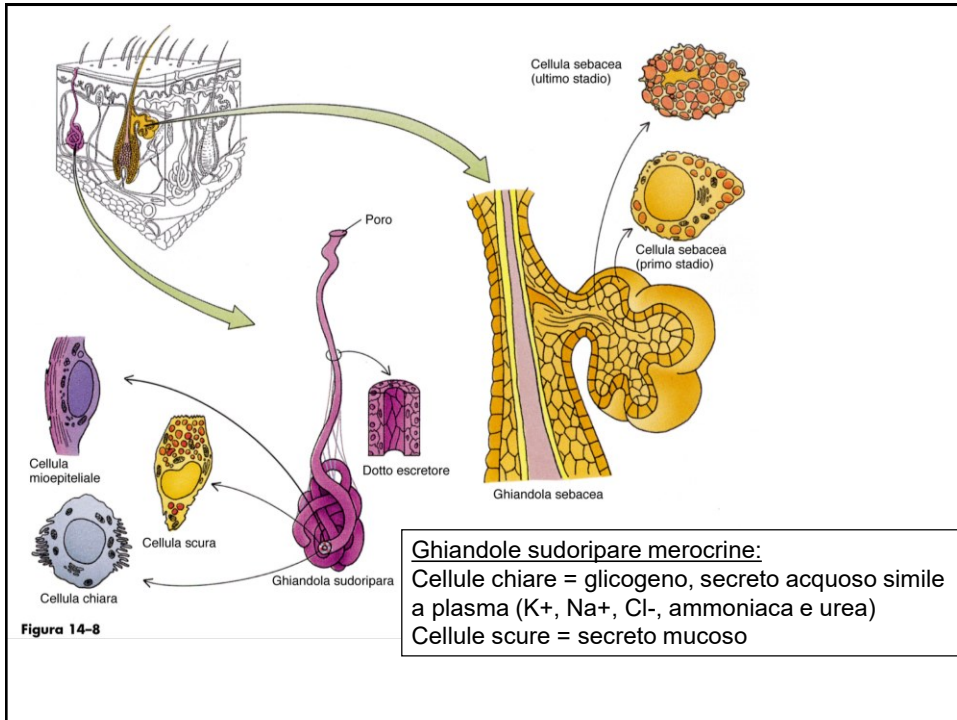
UV



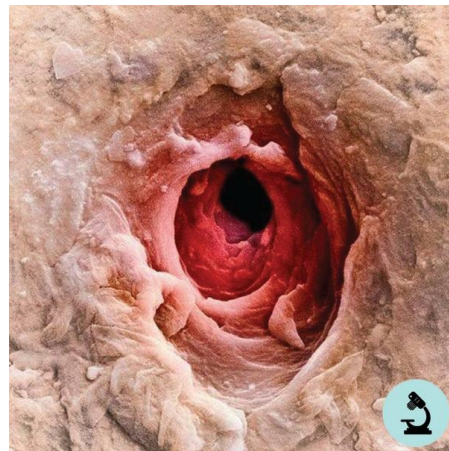
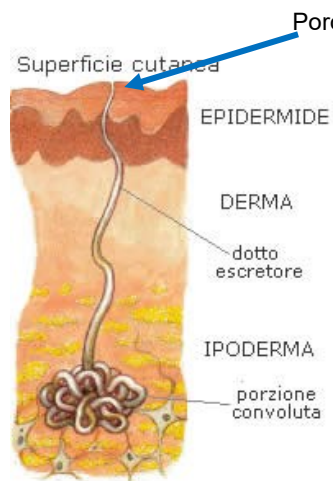
Incremento numerico
Solo dopo n. esposizioni

Figura 14-6





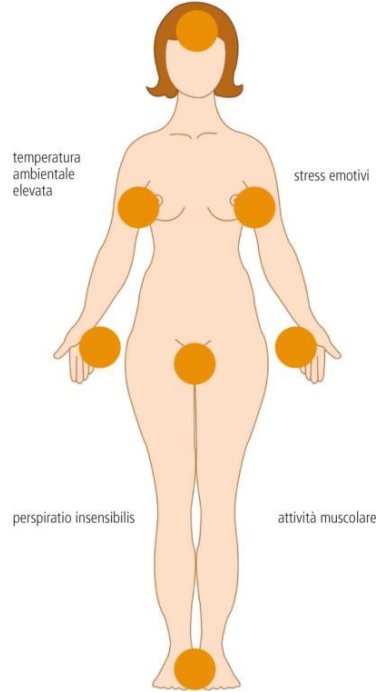
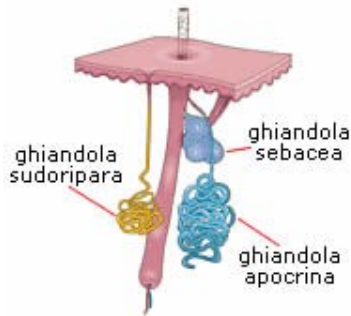
Ghiandola sudoripara



Cellule dei dotti zona basale: ricche di mitocondri, nucleo eterocromatico
 Cellule dei dotti zona luminale: nucleo irregolare, poco citoplasma, rete terminale

Ghiandole sudoripare apocrine:
 Distribuite nelle regioni ascellari,
 in prossimità dei capezzoli, nella
 regione periombelicale e nella
 regione ano-genitale
 Ghiandole ceruminose (orecchio)
 Ghiandole di Moll (palpebre)

Acido-3-metil-1-2-esanoico



Sweaty T-shirt study (1995)



Wedekind, Claus, Seebeck, Thomas, Bettens, Florence, and Paepke, Alexander J. (1995). "MHC-Dependent Preferences in Humans." *Proceedings of the Royal Society of London* 260: 245-49.

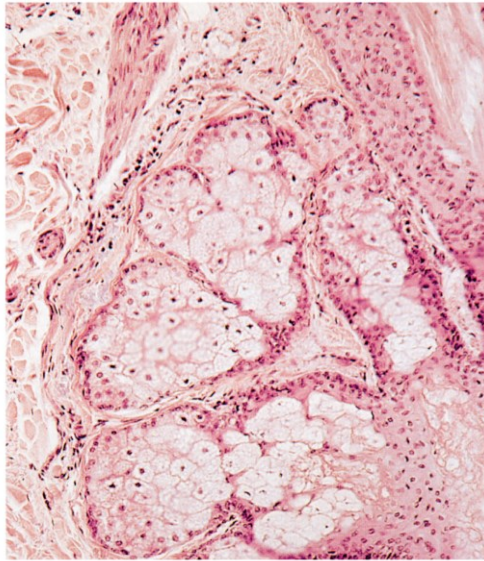


Figura 14-9

Ghiandola sebacea con muscolo erettore del pelo

Sebo= colesterolo,
trigliceridi, e detriti
cellule secretorie

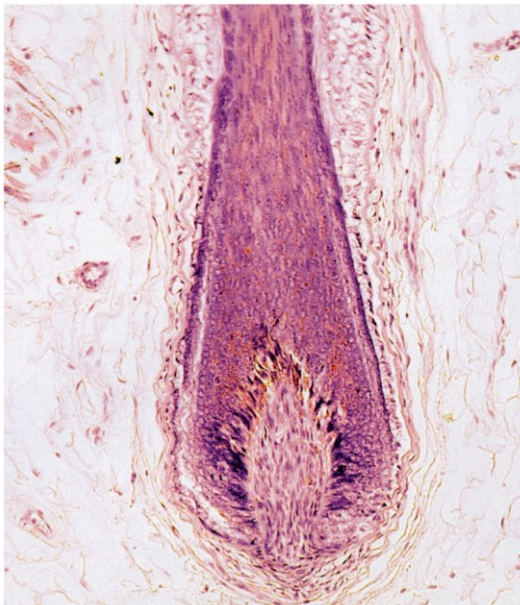
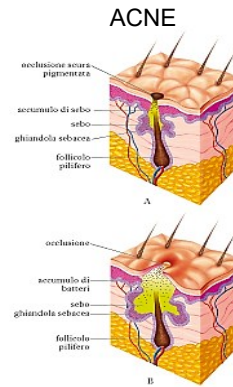


Figura 14-10

Follicolo pilifero
Con radice e papilla pilifera

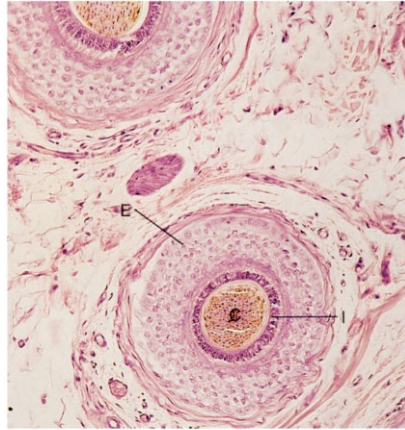


Figura 14-11

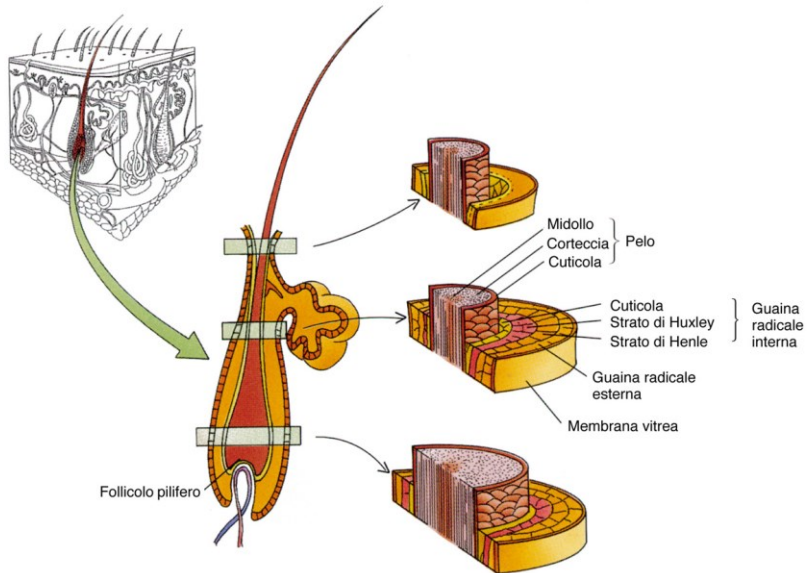


Figura 14-12

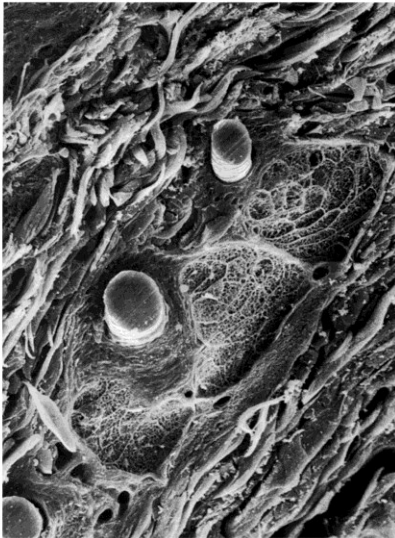


Figura 14-13

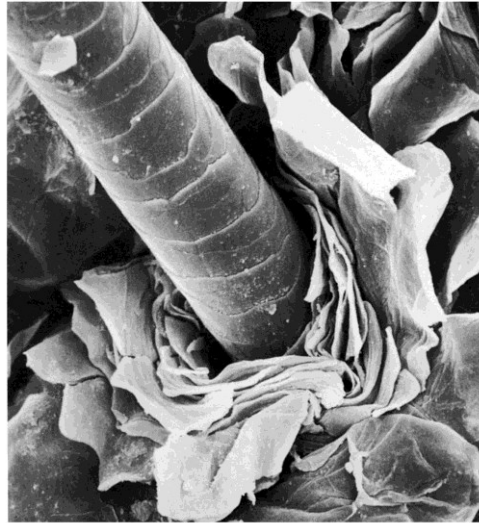
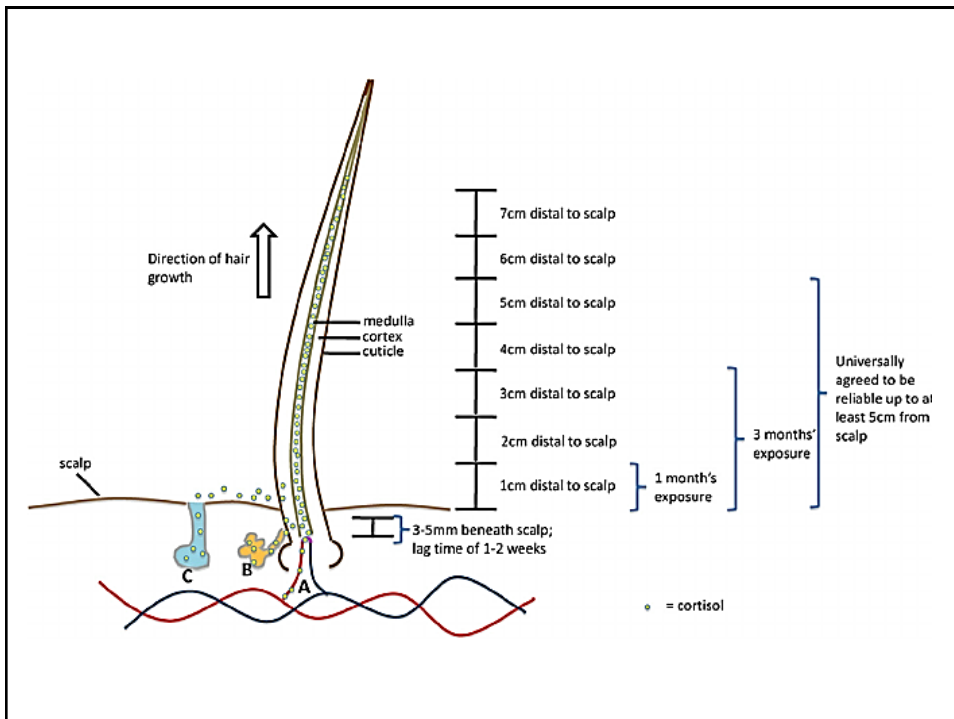
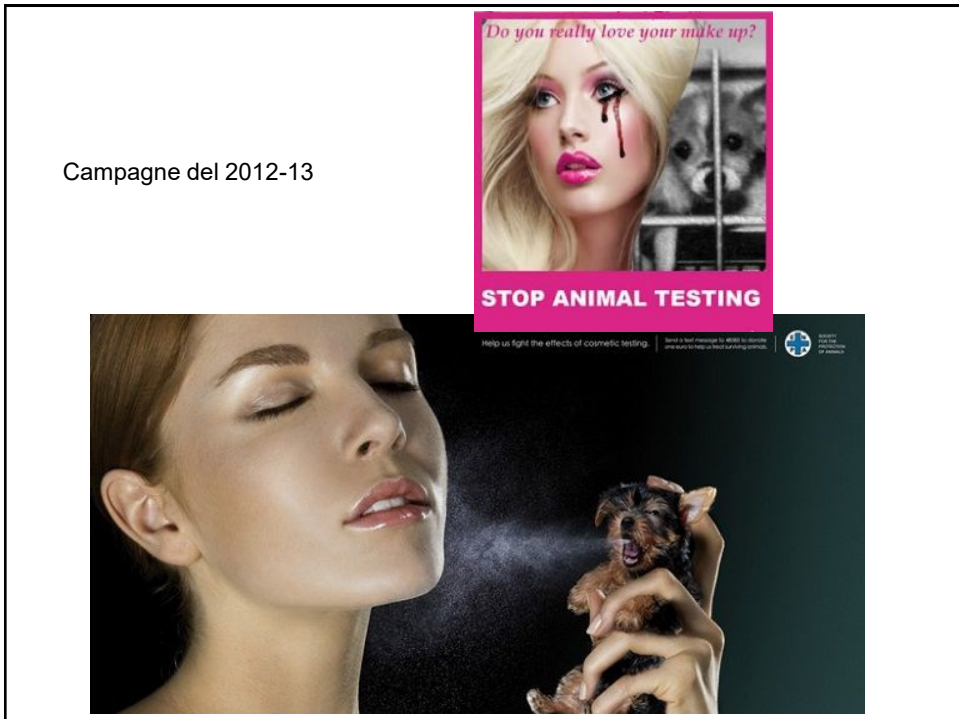
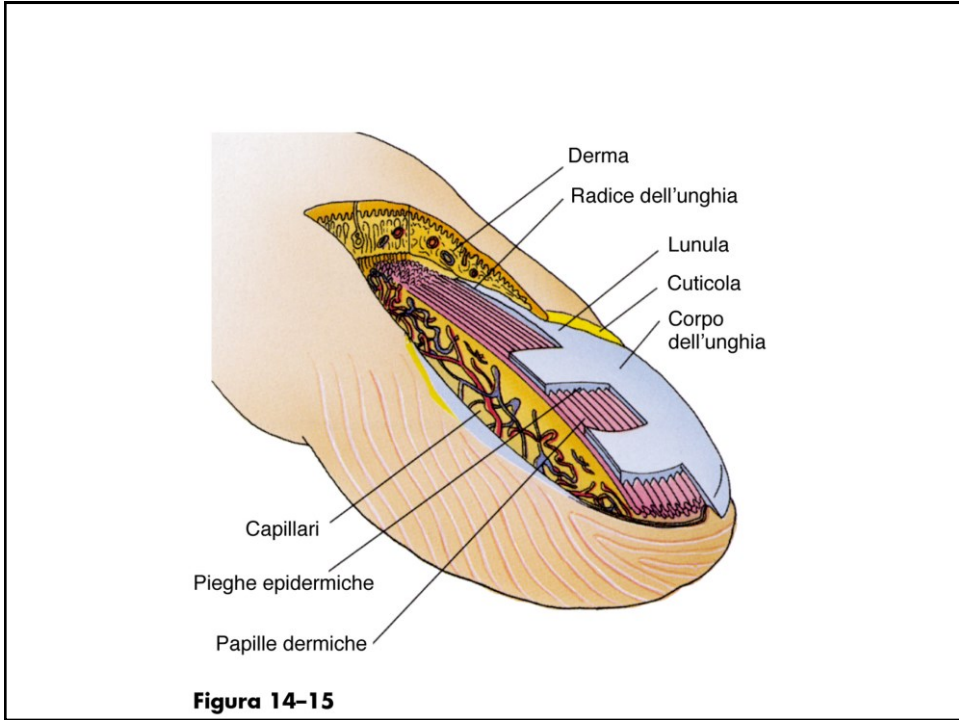
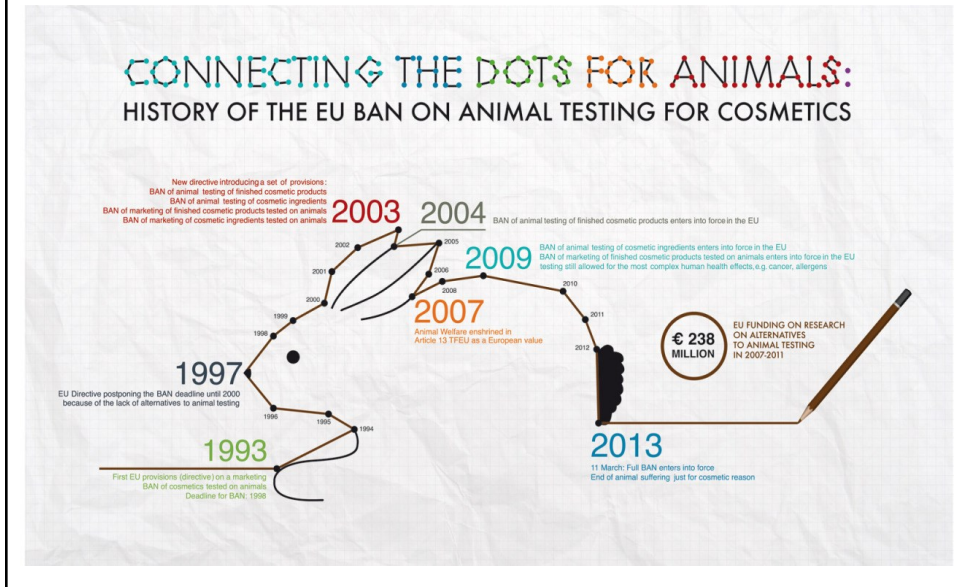


Figura 14-14





Cosmetotoxicology / complete ban of animal testing in EU since 2013



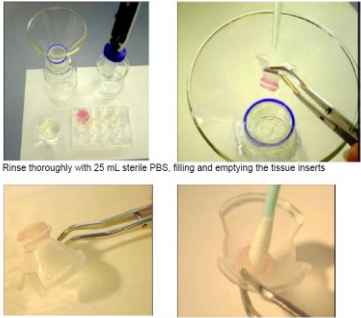
Dal documento dell'UE – COM (11.3.2013)

Ad oggi (2013) sono stati convalidati metodi sostitutivi, adottati sotto forma di linee guida dell'OCSE per i **test di irritazione e corrosione cutanea, fototossicità e assorbimento cutaneo**.

Metodi parzialmente sostitutivi, idonei a essere inclusi nelle strategie di sperimentazione, sono stati convalidati nel campo **della tossicità sistemica acuta e dell'irritazione oculare** e, per quanto riguarda quest'ultima, sono stati adottati sotto forma di linee guida dell'OCSE.

Il perfezionamento dei test di genotossicità in vitro e delle strategie di Sperimentazione già in uso contribuirà allo studio di questo endpoint

DE ALM ECVM DATABASE SERVICE ON ALTERNATIVE METHODS TO ANIMAL EXPERIMENTATION



Rinse thoroughly with 25 mL sterile PBS, filling and emptying the tissue inserts

Remove the remaining PBS from the epidermal surface by gently taping on absorbent paper

Sweep the surface with a cotton-bud on absorbent paper

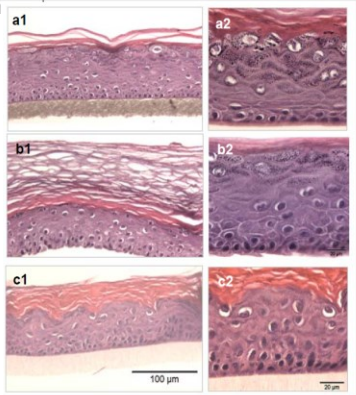


Figure 23. Representative histology images of the three reconstructed human skin models.

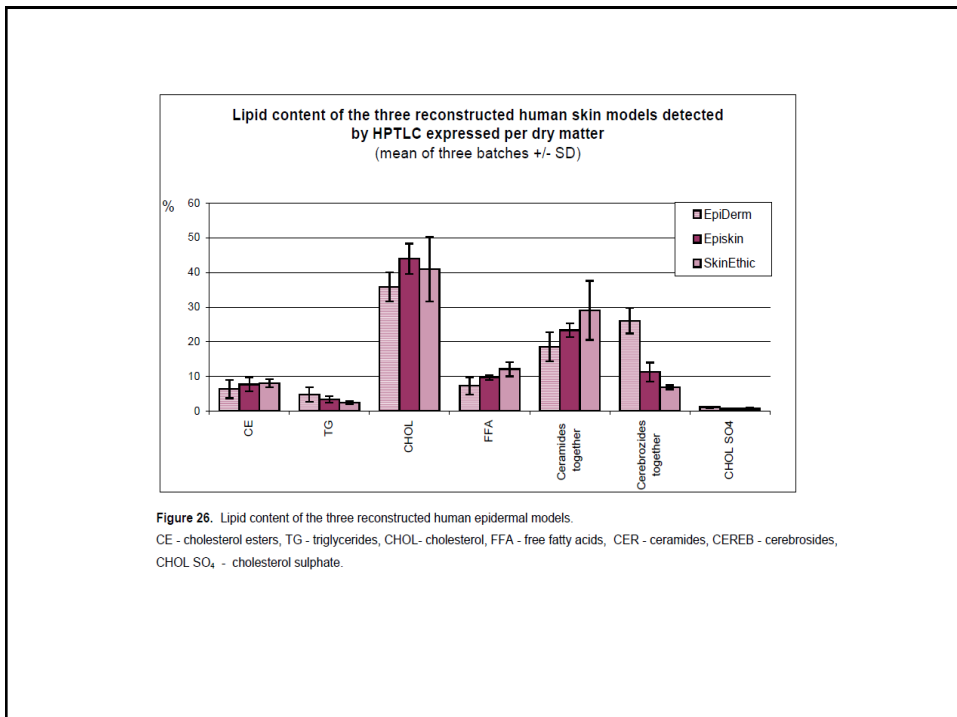
- 1) EpiDerm model (1-magnification 200 x, 2-magnification 600 x)
- 2) EPIKIN model (1-magnification 200 x, 2-magnification 600 x)
- 3) SkinEthic model (1-magnification 200 x, 2-magnification 600 x)

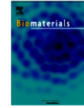
Table 19. Basic characteristics of the three reconstructed human skin models.

Reconstructed human skin model	Days of cultivation before supply	Model Size (cm ²)	Number of viable cell layers	Approximate thickness of the viable epidermis (µm)	Approximate thickness of the stratum corneum (µm)
EpiDerm	10	0.63	8-12	60-100	15-30
EPIKIN	13	1.1	8-12	60-100	80-100
SkinEthic	17	0.5	7-10	40-60	20-40

2. Replace the EPIKINTM-SM unit in the fresh assay medium pre-filled wells (2 mL). When all of the units have been rinsed: place the units on absorbent paper.
3. Put units into the wells of the plate containing the MTT solution (0.3 mg/mL) in 2 mL assay medium per well.
4. For the specific coloring controls, dispense 2 mL of assay medium per well. Put units into the wells of the plate.
5. Replace the lid on the plate. Incubate the treated and rinsed epidermis at 37°C, 5% CO₂, > 95% humidified atmosphere for 3 hrs (+/-15 min)

Record incubations start time in the MDS Annexes 8-10.





Endogenous human skin equivalent promotes *in vitro* morphogenesis of follicle-like structures

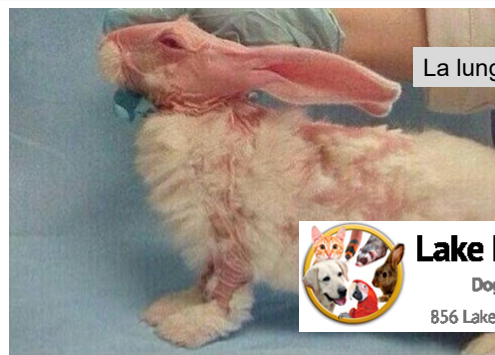
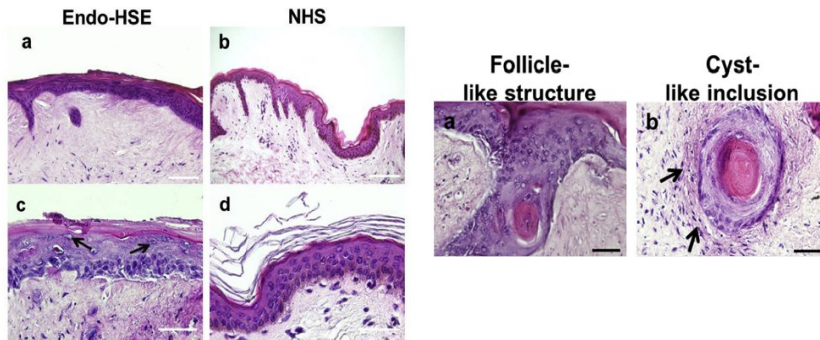


Costantino Casale^{a,1}, Giorgia Imparato^{b,1}, Francesco Urciuolo^b, Paolo A. Netti^{a,b,c,*}

^a Interdisciplinary Research Centre on Biomaterials (CRIB), University of Naples Federico II, P.le Tecchio 80, Naples, Italy

^b Center for Advanced Biomaterials for HealthCare@CRIB, Istituto Italiano di Tecnologia, Largo Borsari 2, Maratea 53, 80125 Naples, Italy

^c Department of Chemical, Materials and Industrial Production (DICMIP) University of Naples Federico II, P.le Tecchio 80, Naples, Italy



La lunga vita delle bufale online...



Lake Howell Animal Clinic

Dogs | Cats | Birds | Reptiles | Exotics

856 Lake Howell Road • Maitland • FL • 32751

ontheastralpane

c.californialuv64

the-vegan-mothership

This is a bunny at a L'oreal lab. L'oreal does a lot of cruel needless animal testing. Please don't buy products made by L'oreal. The more products they sell, the more animals are tortured.

Kimberly Butler

I knew there was a reason why I didn't like loreal

Questo NON è un coniglio trattato all'Oreal,
è solo un coniglio affetto da scabbia in cura presso una clinica veterinaria di Miami

http://lakehowellanimalclinic.com/about-us/behind-the-scenes-photos.html?_ga=1.135425265.1983258455.1426615488

La lunga vita delle bufale online...

Origins: In **early 2013** the above-displayed image of a suffering rabbit began to circulate online accompanied by a claim attributing the animal's visibly poor health to laboratory testing conducted by the **L'Oreal** cosmetics and beauty company. While the precise origin of the claim isn't clear, an iteration of it was posted to **Twitter** in **February 2013**, and in **April 2013** the rabbit photo and rumor circulated on **Tumblr** and was reposted to **Reddit**.

When the photograph and claim spread across several social networks including Facebook in **March 2015**, L'Oreal responded on their own **Facebook page**, explaining that their cosmetics were never tested on animals except for instances in which such tests are mandated by law:

Thanks for the opportunity to clarify. L'Oreal no longer tests any of its products or any of its ingredients on animals, anywhere in the world. Nor does L'Oreal delegate this task to others. An exception could only be made if regulatory authorities demanded it for safety or regulatory purposes. You can read more about our policy here:

<http://bit.ly/LorealAnswers>



BUFALe.NET
 Antibufala - Fact checking - Antitruffa - Antivirus

<http://www.bufale.net>