

LAB. DI CARTOGRAFIA

ANNO ACCADEMICO 2020-2021

LETTURA DELLE CARTE TOPOGRAFICHE

Programma della lezione

- Come si legge una carta topografica?
- Elementi topografici per leggere le carte
- Preparazione alla lettura delle carte topografiche
- Esempi di forme strutturali, costiere, eoliche, glaciali, carsiche, fluviali, ecc.

Come si legge una carta topografica? Elementi da considerare (Castiglioni et al., 2005)

- **Estensione della carta:** larghezza per altezza
- **Intervallo altimetrico:** quote max e min, dislivello
- **Inquadramento geografico:** Caratteristiche geografiche generali
- **Pendenze:** % nelle varie zone
- **Lettura analitica del terreno:** scarpate, pendii, pianure, ecc
- **Superfici di roccia affiorante:** Presenza di rocce affioranti
- **Idrografia:** elementi idrografici, fiumi, laghi, mare, corsi d'acqua, ecc
- **Vegetazione:** tipi di vegetazione
- **Elementi antropici:** strade, edifici, moli, funivie, industrie, ecc
- **Uso del suolo:** coltivazioni, cave, ecc
- **Tipi di forme e stili geomorfologici:** forme riconoscibili
- **Considerazioni sul paesaggio:** tipo di paesaggio in generale

Elementi topografici e
stili geomorfologici

IGM 1:50.000 - 1:25.000

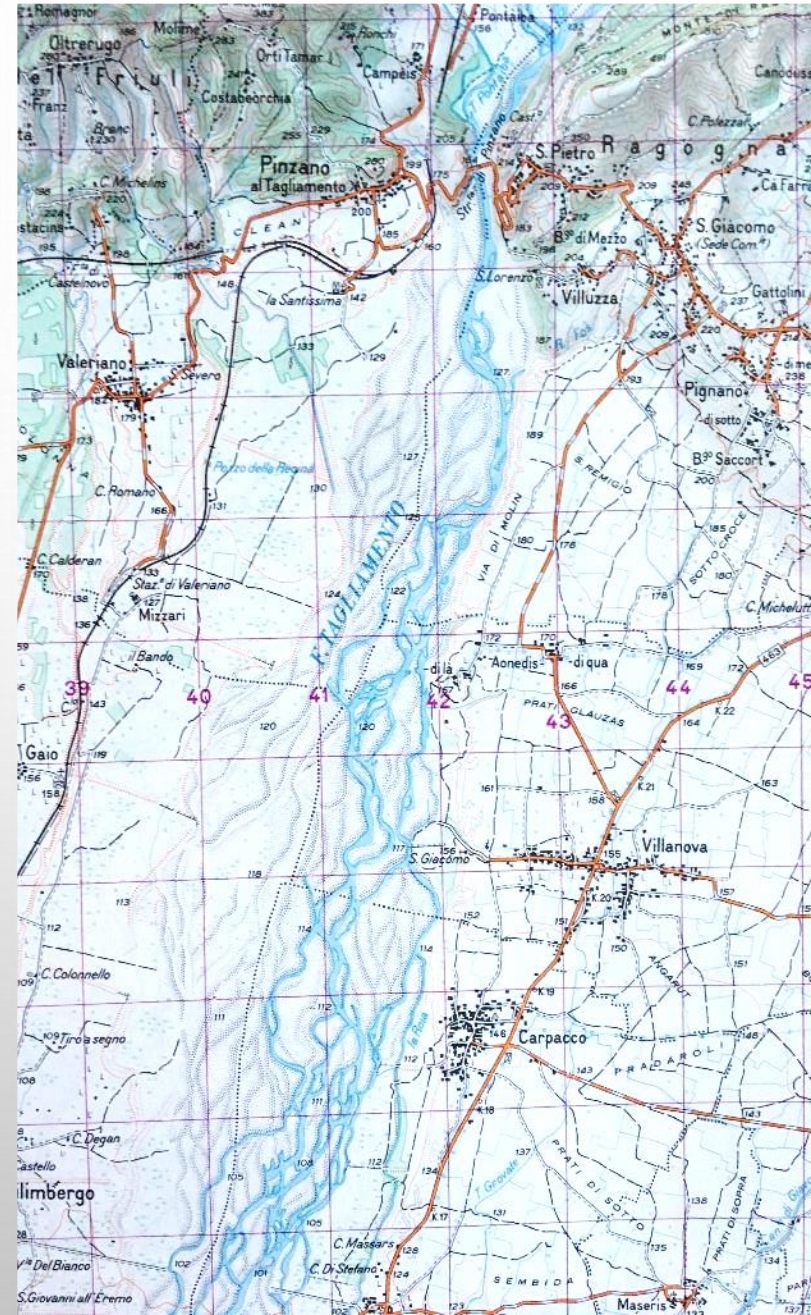
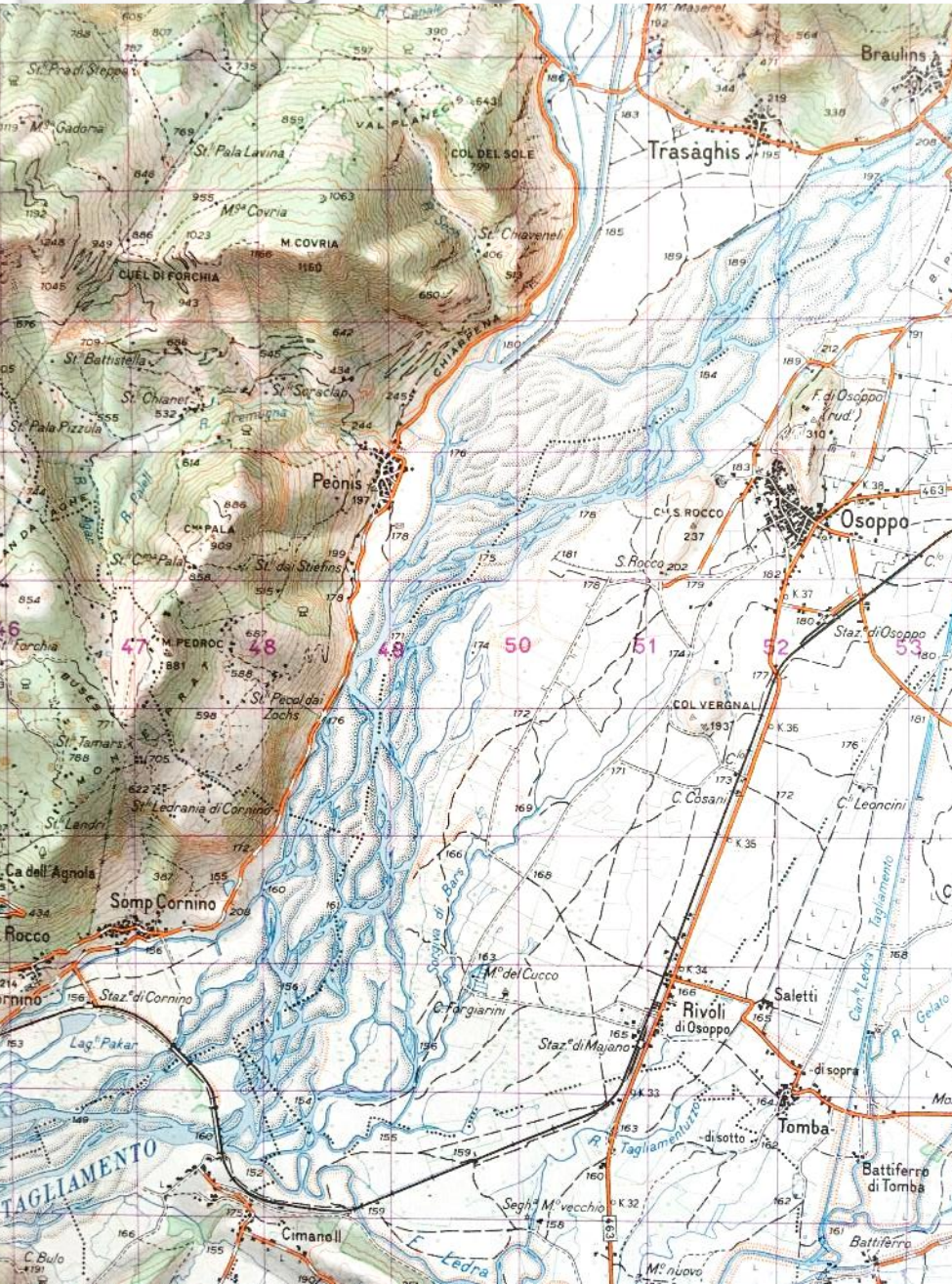


Valle impostata su una faglia (Linea della Gail)

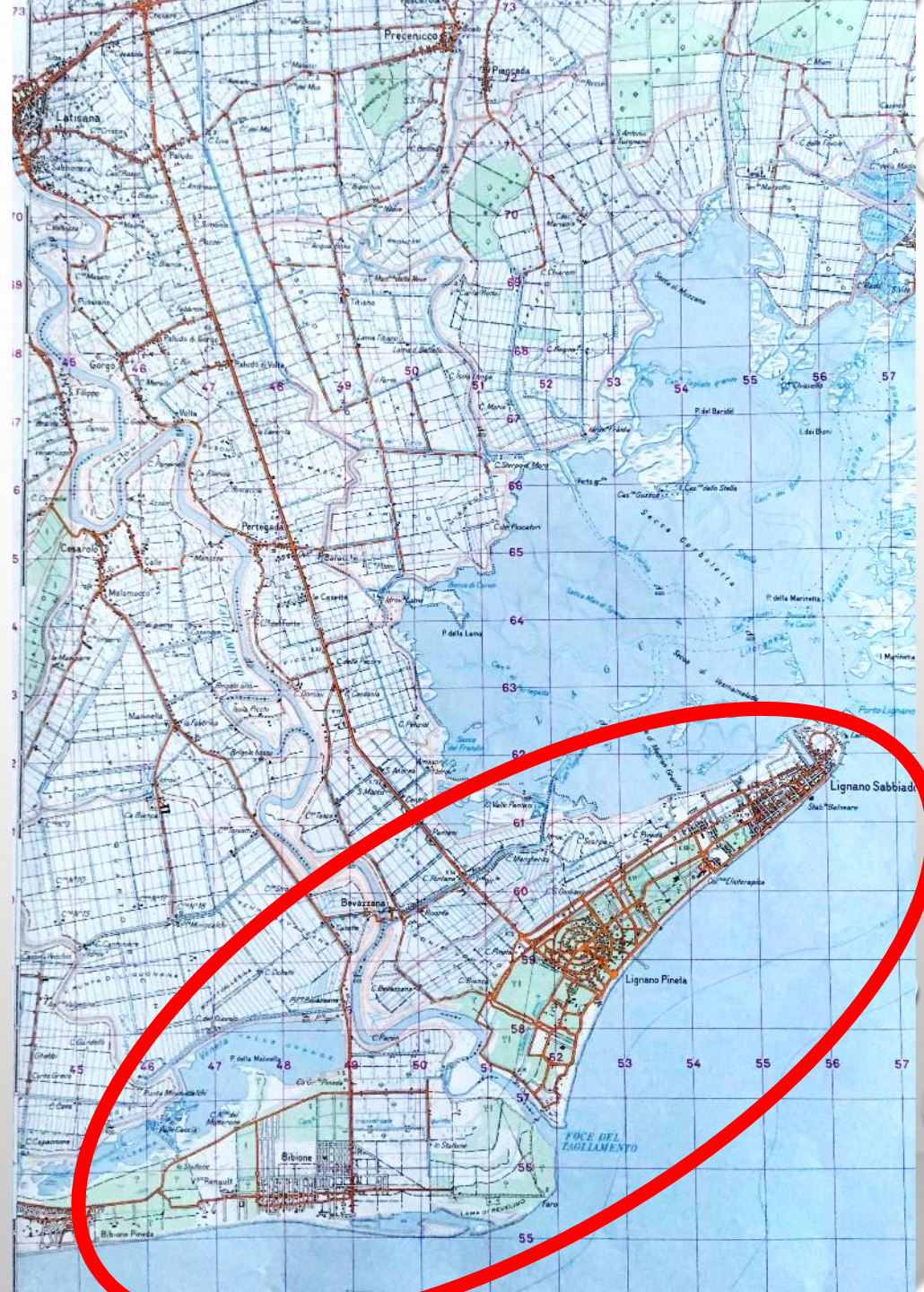


**Morena frontale
(Anfiteatro Morenico del Tagliamento)**

Fiume a canali intrecciati (braided): Tagliamento



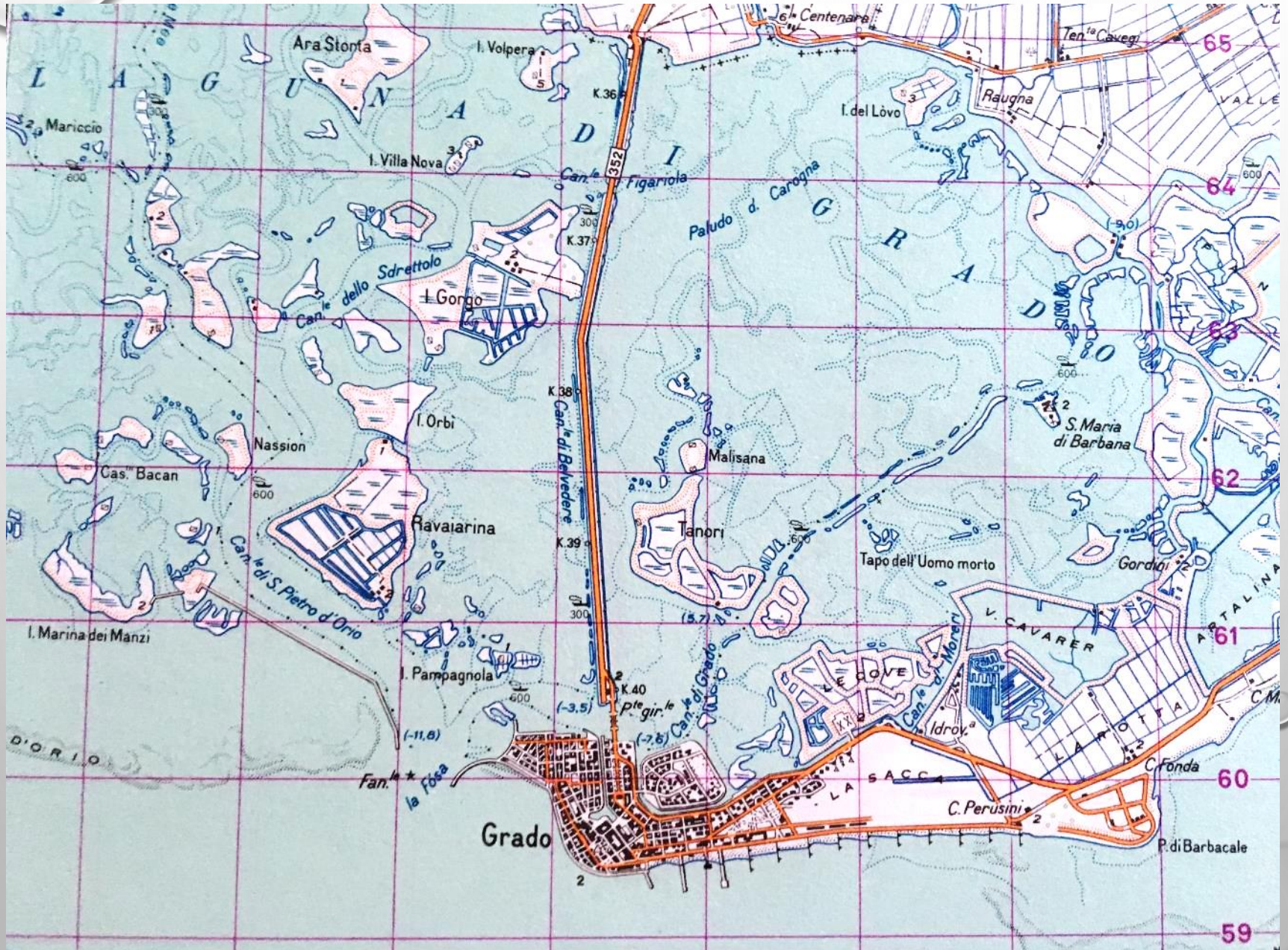
Delta fluviale (Tagliamento a Lignano Sabbia)





Circo glaciale (Monte Coglians)

Laguna (Grado)

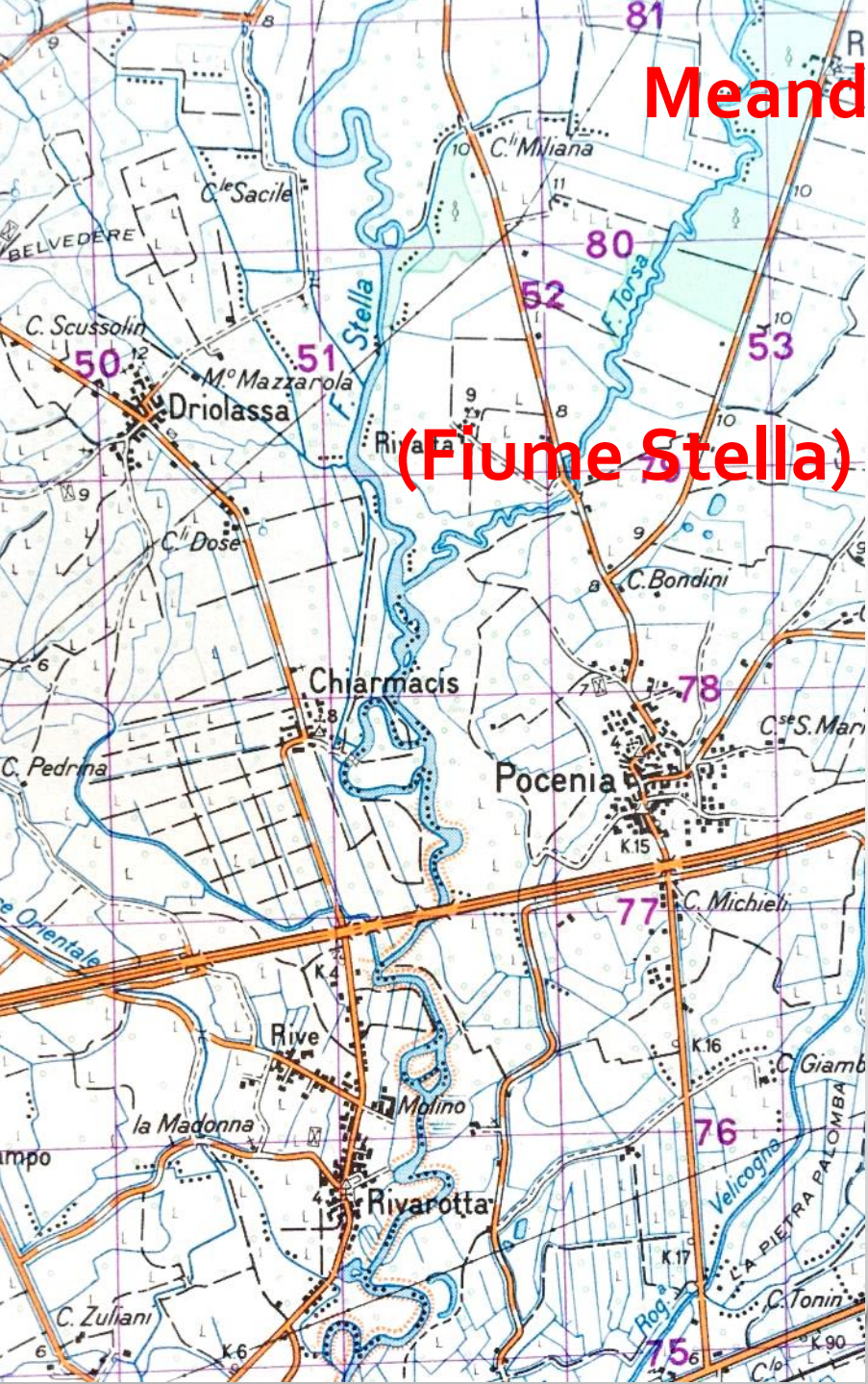


Altipiano carsico (Carso Isontino)

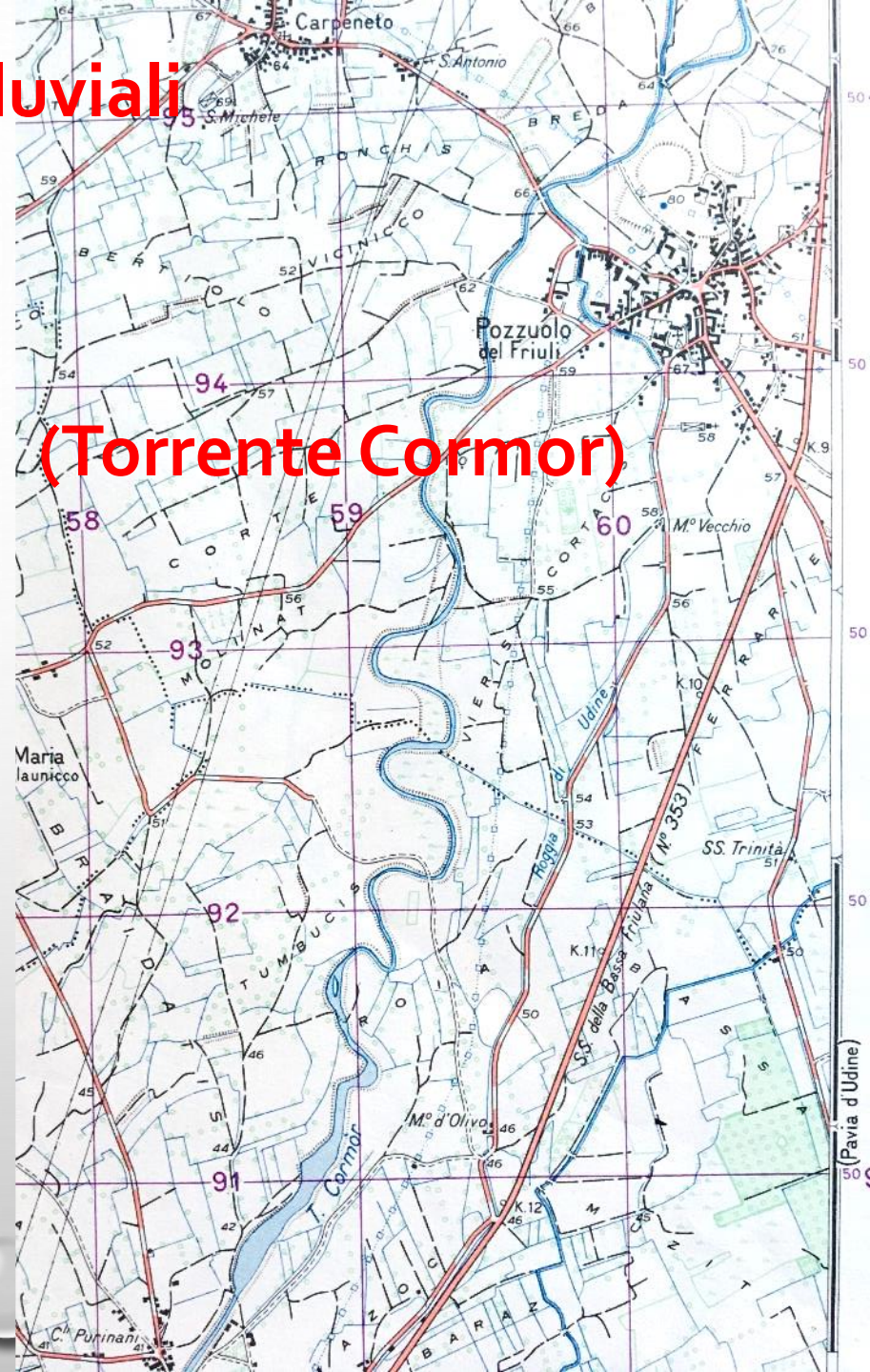


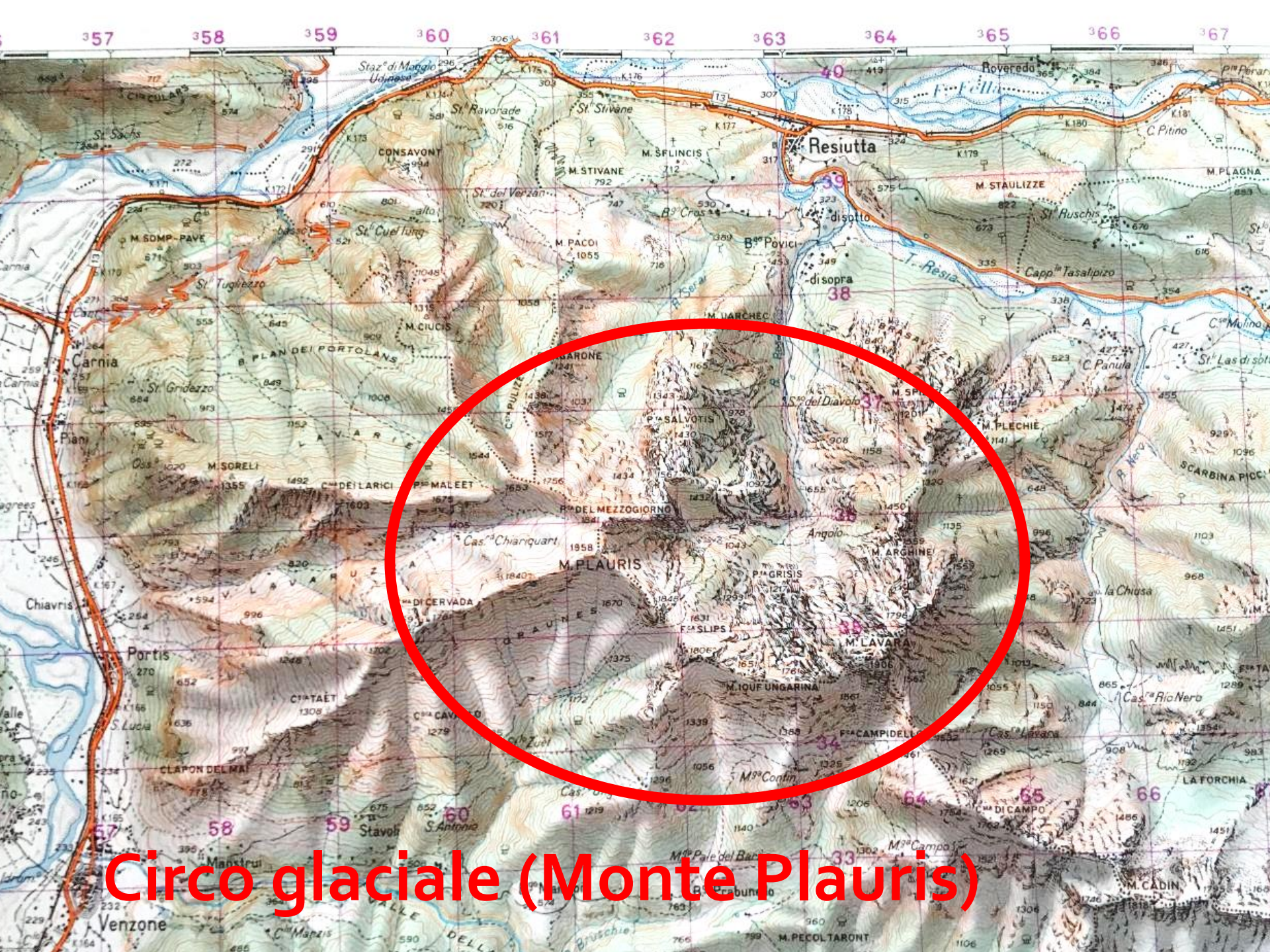
Meandri fluviali

(Fiume Stella)



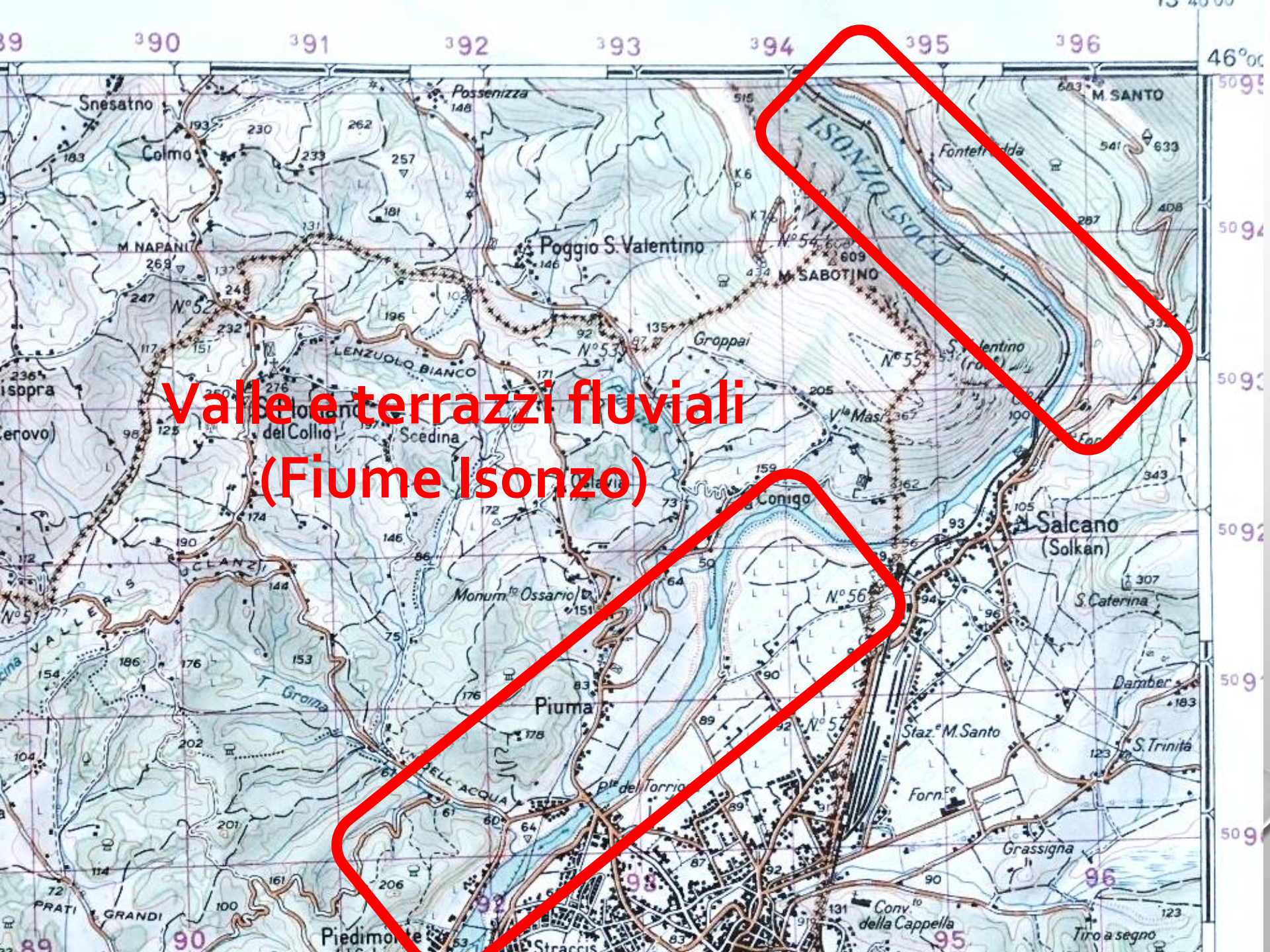
(Torrente Cormor)



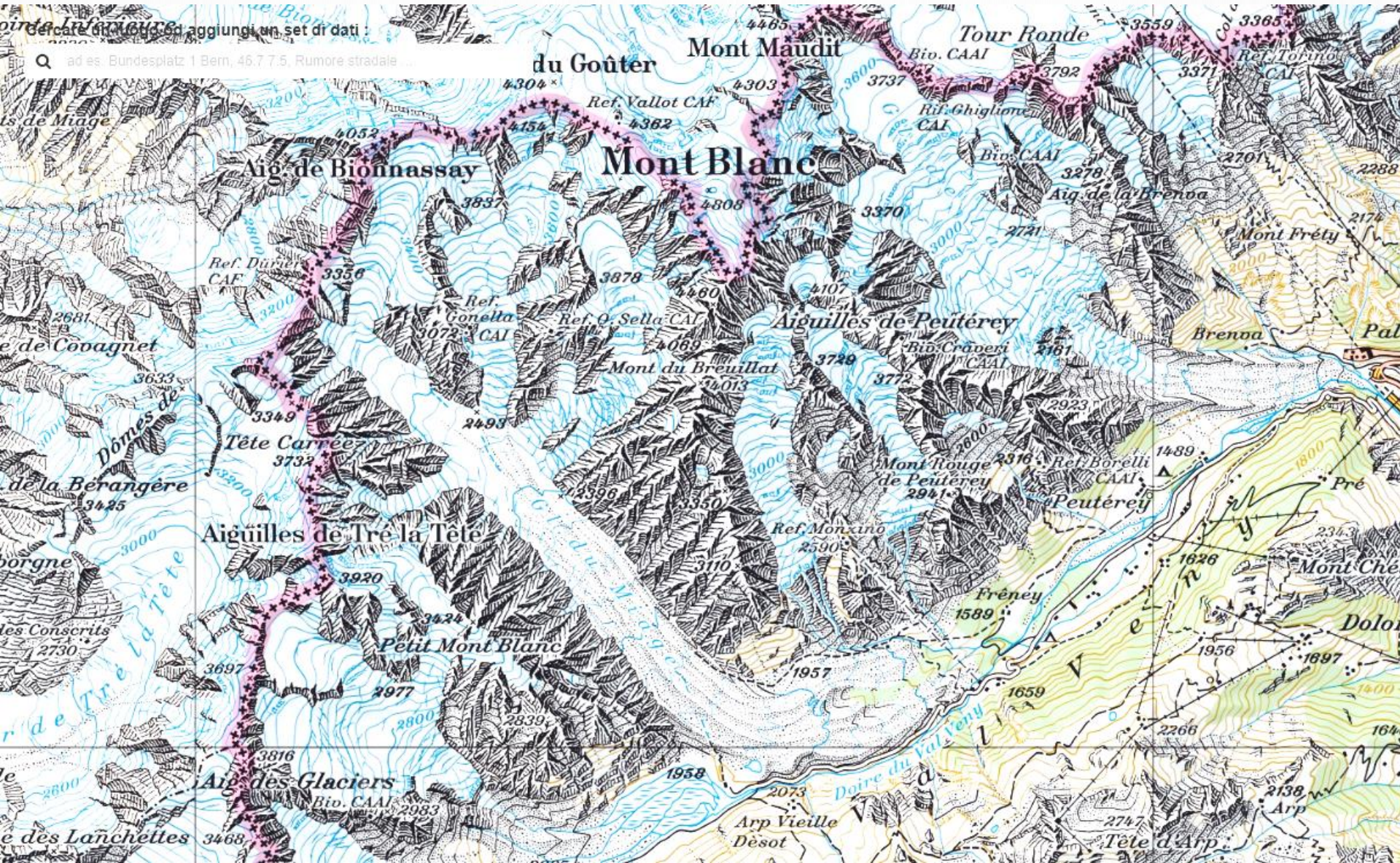


Circo glaciale (Monte Plauris)

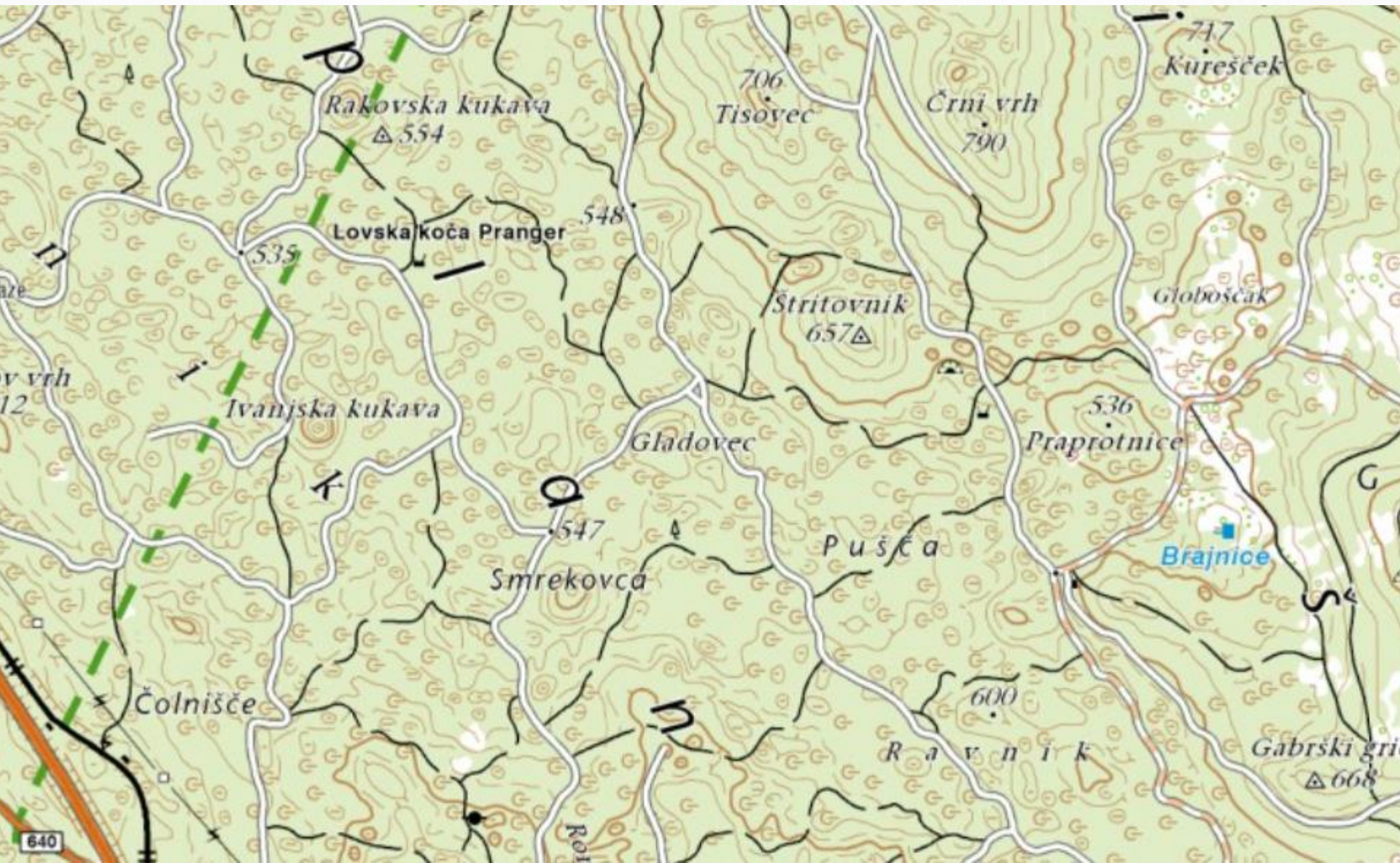
**Valle e terrazzi fluviali
(Fiume Isonzo)**



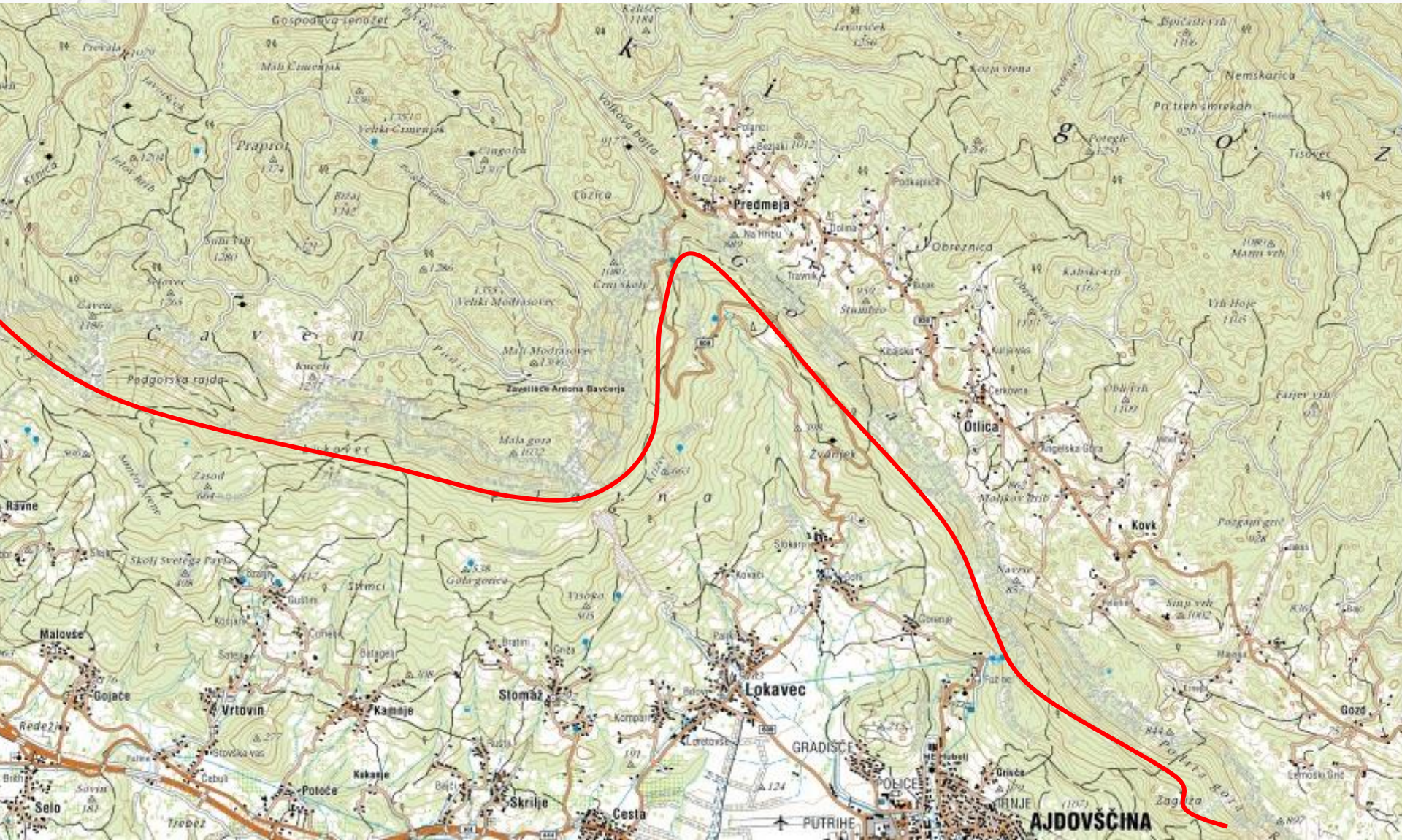
Ghiacciaio del Monte Bianco



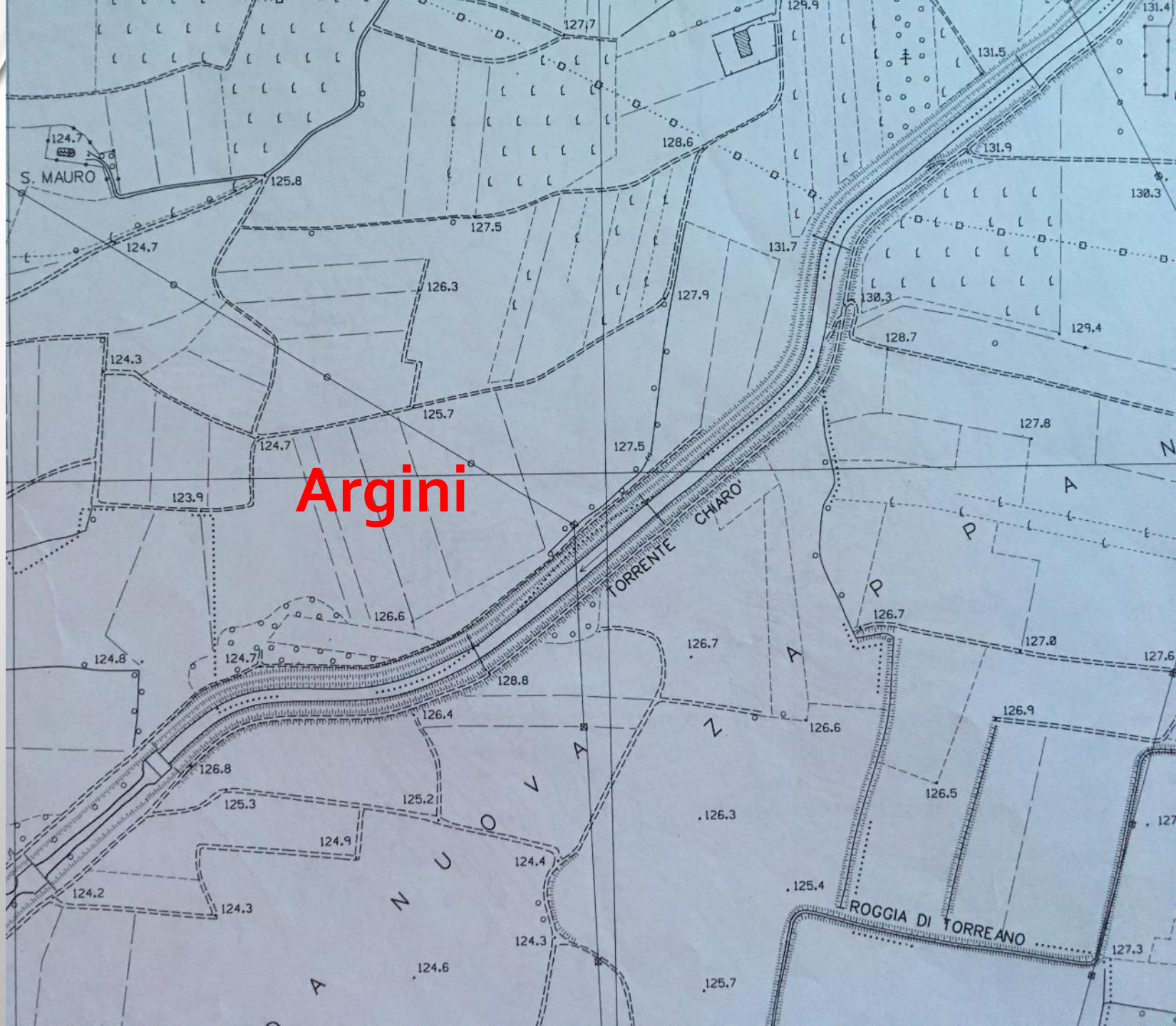
Altipiano carsico con doline



Condizionamento strutturale (Trnovski Godz – Selva di Ternova)



CTR 1:5.000 - 1:10.000



A topographic map of the Gemona del Friuli area in Italy. The map features contour lines, roads, and buildings. A prominent feature is a large, fan-shaped area of dotted shading, representing an alluvial cone, which originates from the mountains and spreads out towards the town of Gemona del Friuli. The map is framed by a thick red border.

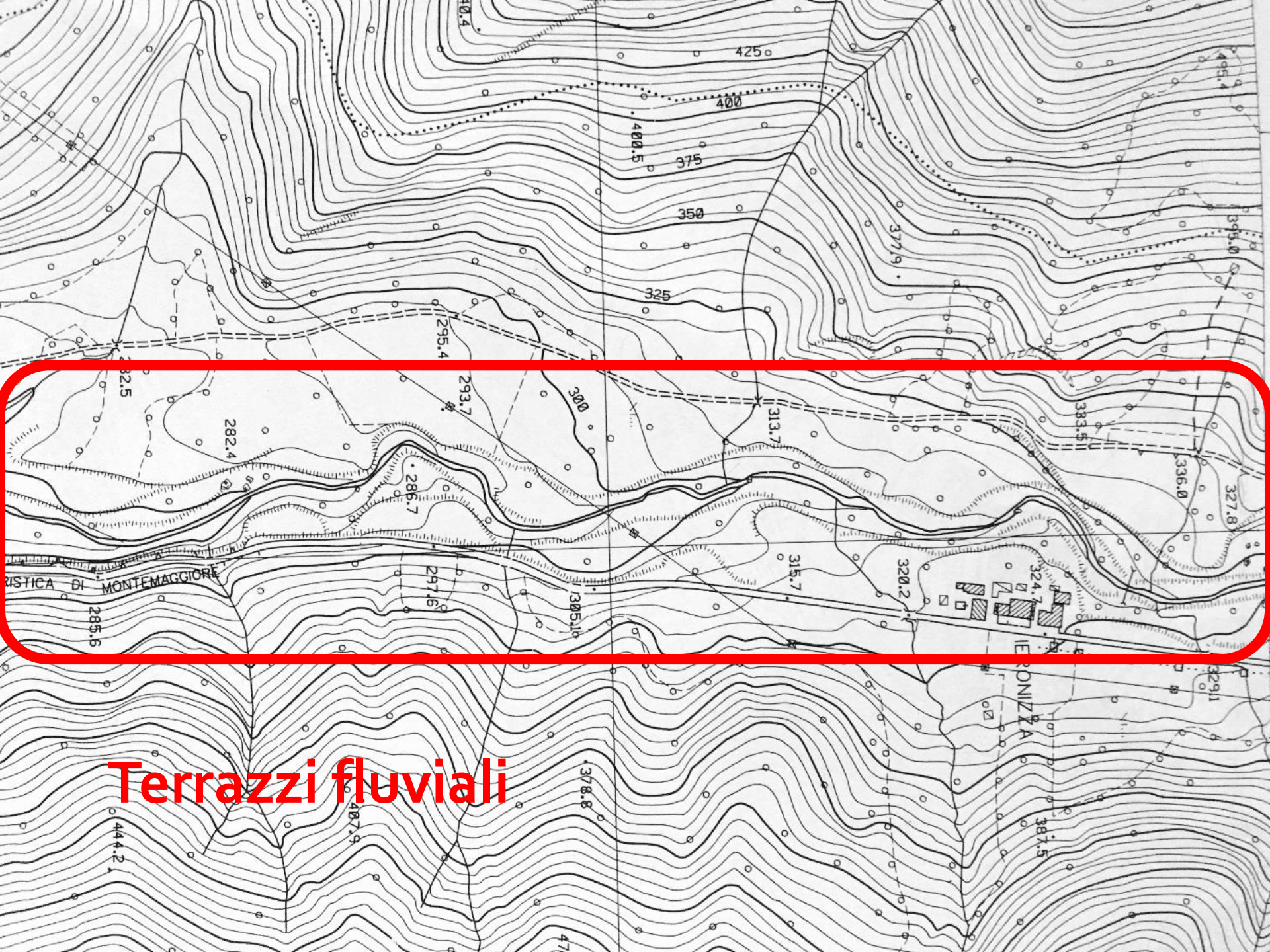
**Conoide alluvionale
(Gemona del Friuli)**

**Terrazzamenti
Artificiali
(pastini)**

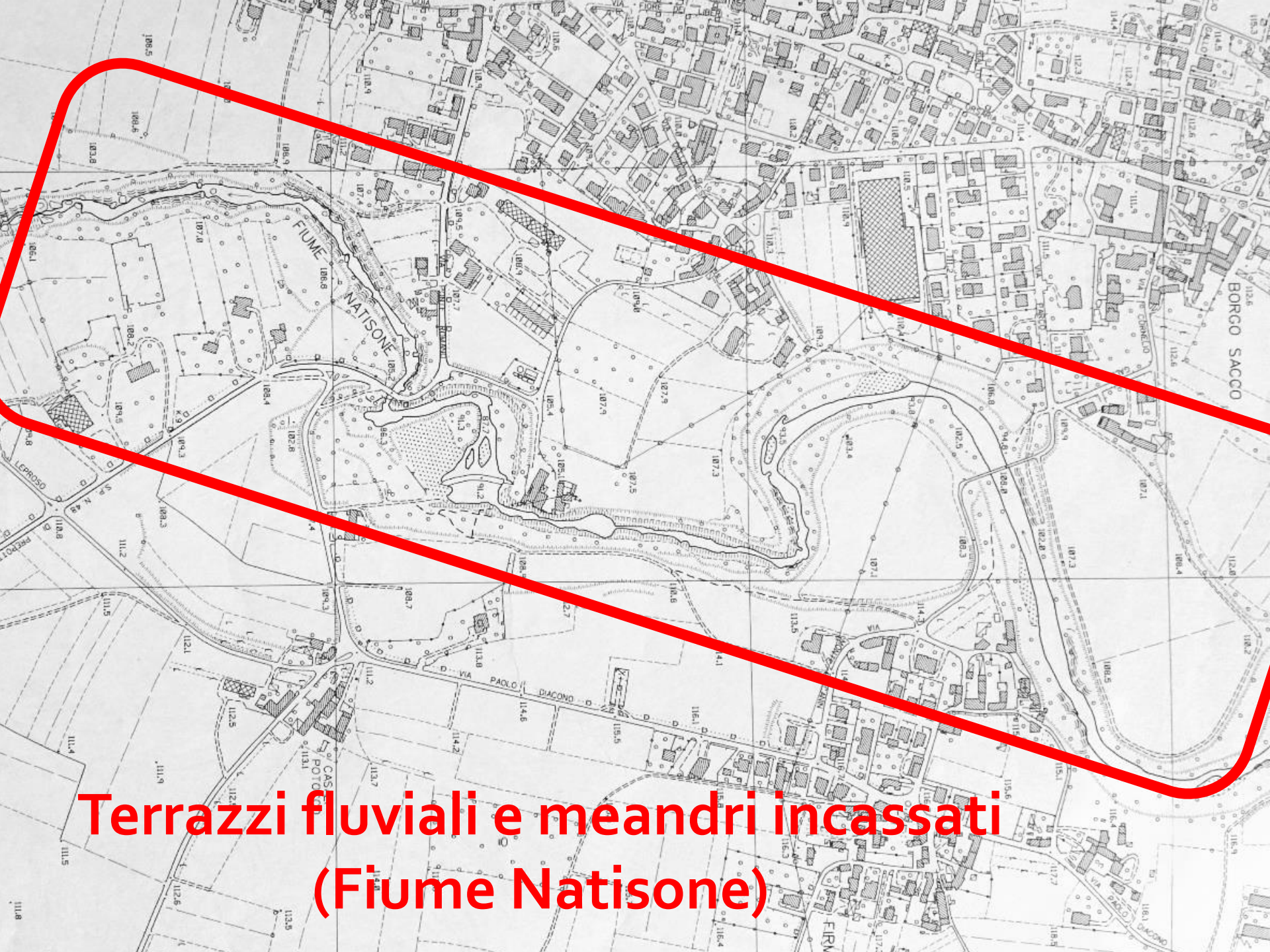




**Lingua glaciale
(Sella Prevala)**



Terrazzi fluviali

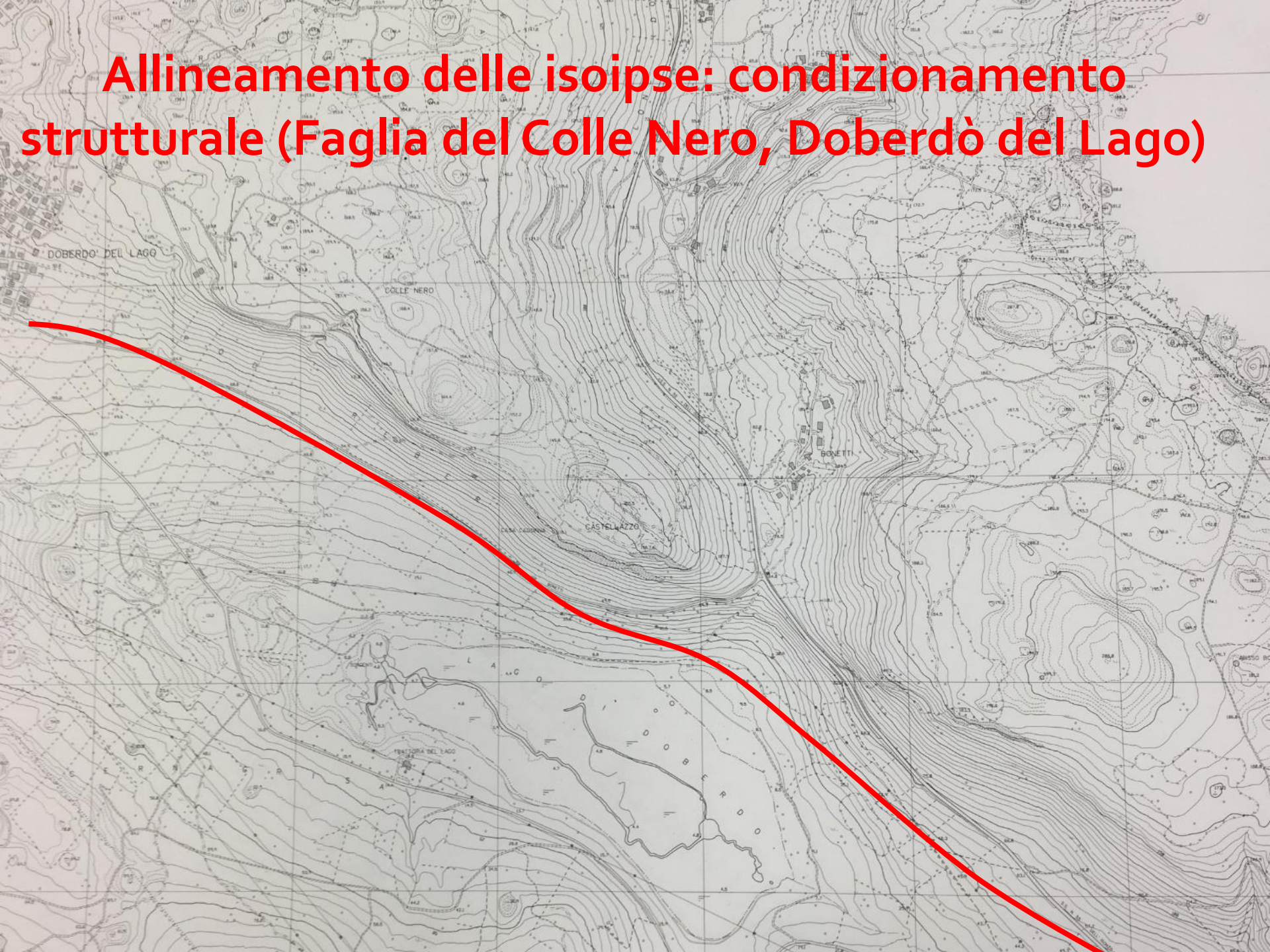


**Terrazzi fluviali e meandri incassati
(Fiume Natisone)**

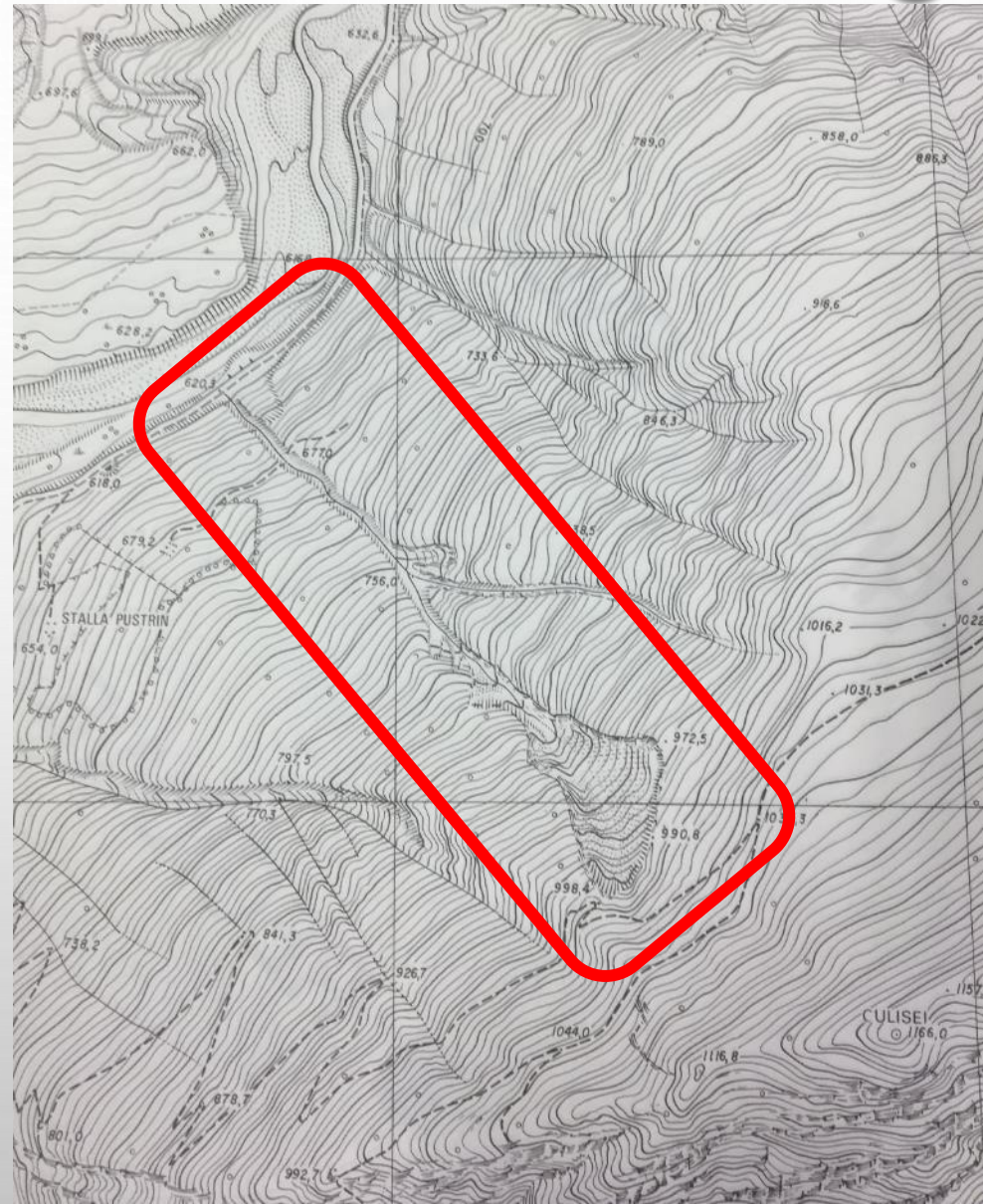
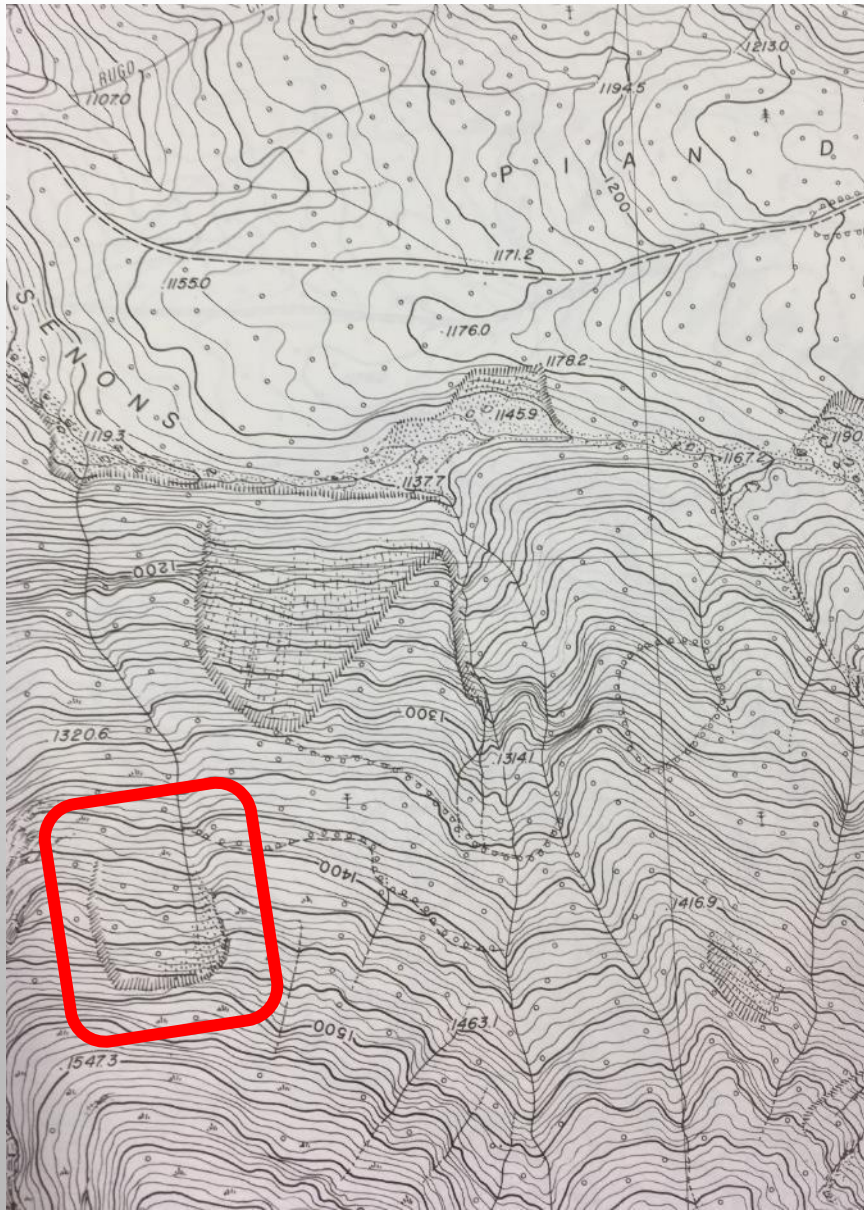
A detailed topographic map showing contour lines and a network of roads. A prominent red outline highlights a specific area on the left side of the map, which appears to be a valley or a specific geographical feature. The map is oriented with North at the top.

**Forra fluviale
(Torrente Cosa - Gerchia)**

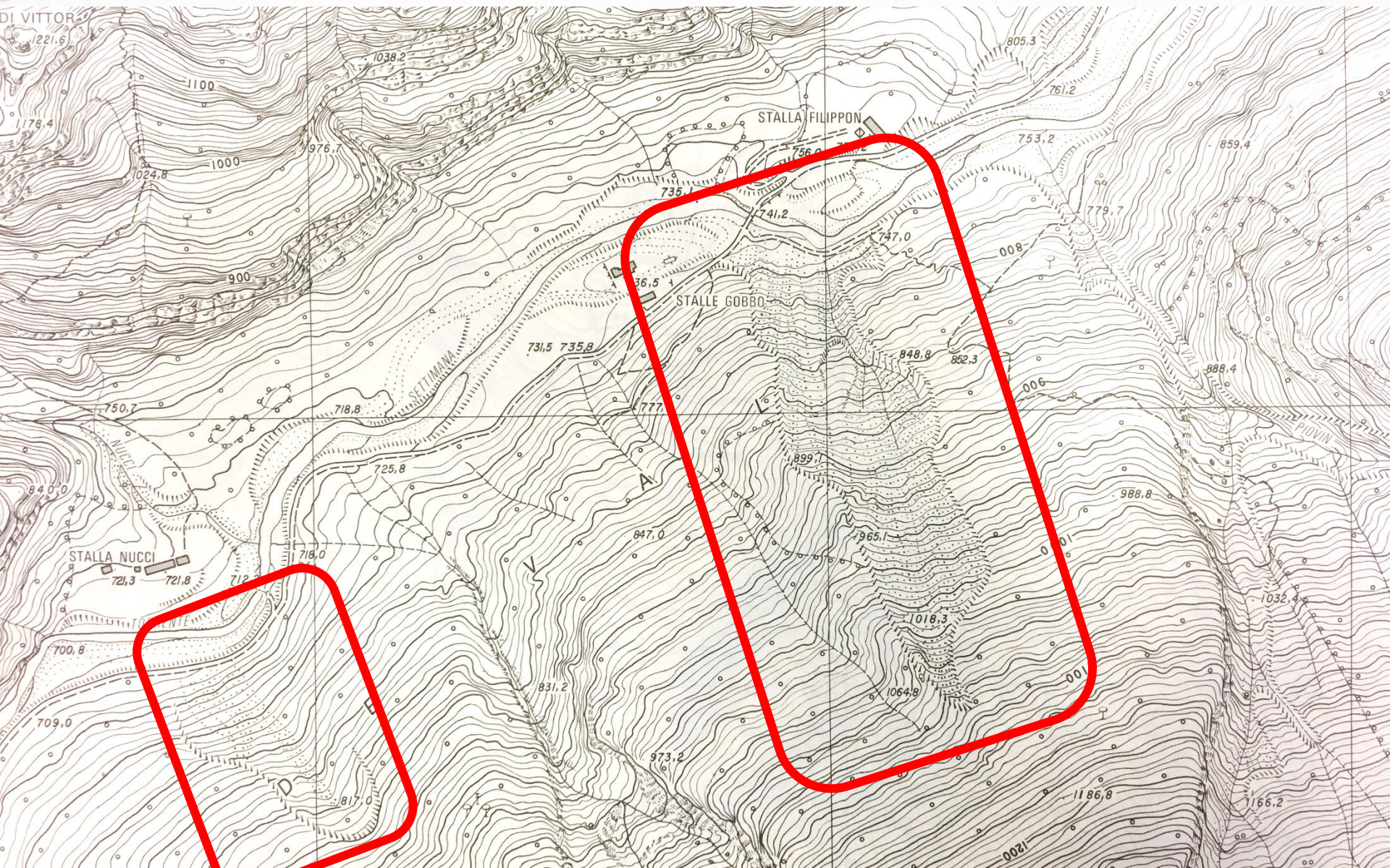
Allineamento delle isoipse: condizionamento strutturale (Faglia del Colle Nero, Doberdò del Lago)



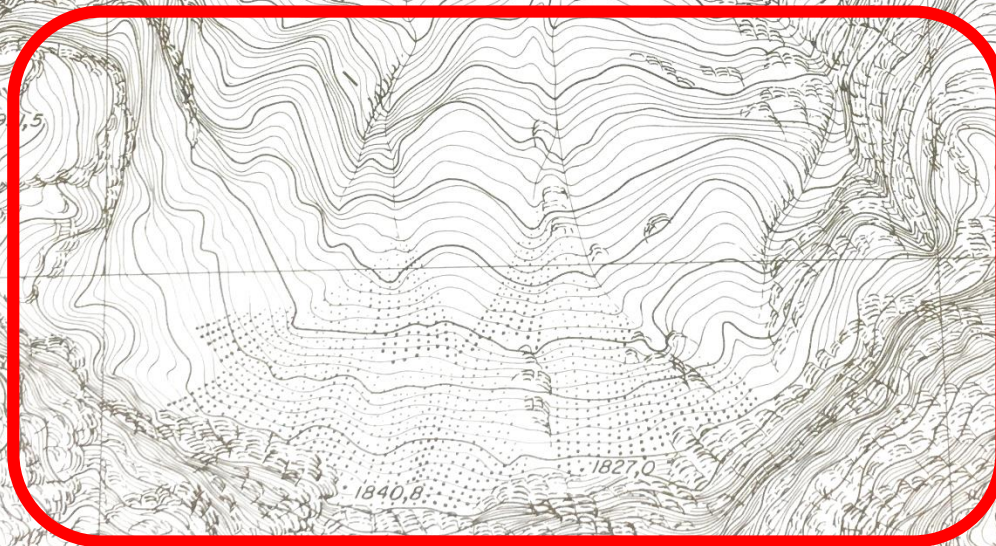
Forme legate alla gravità: frane



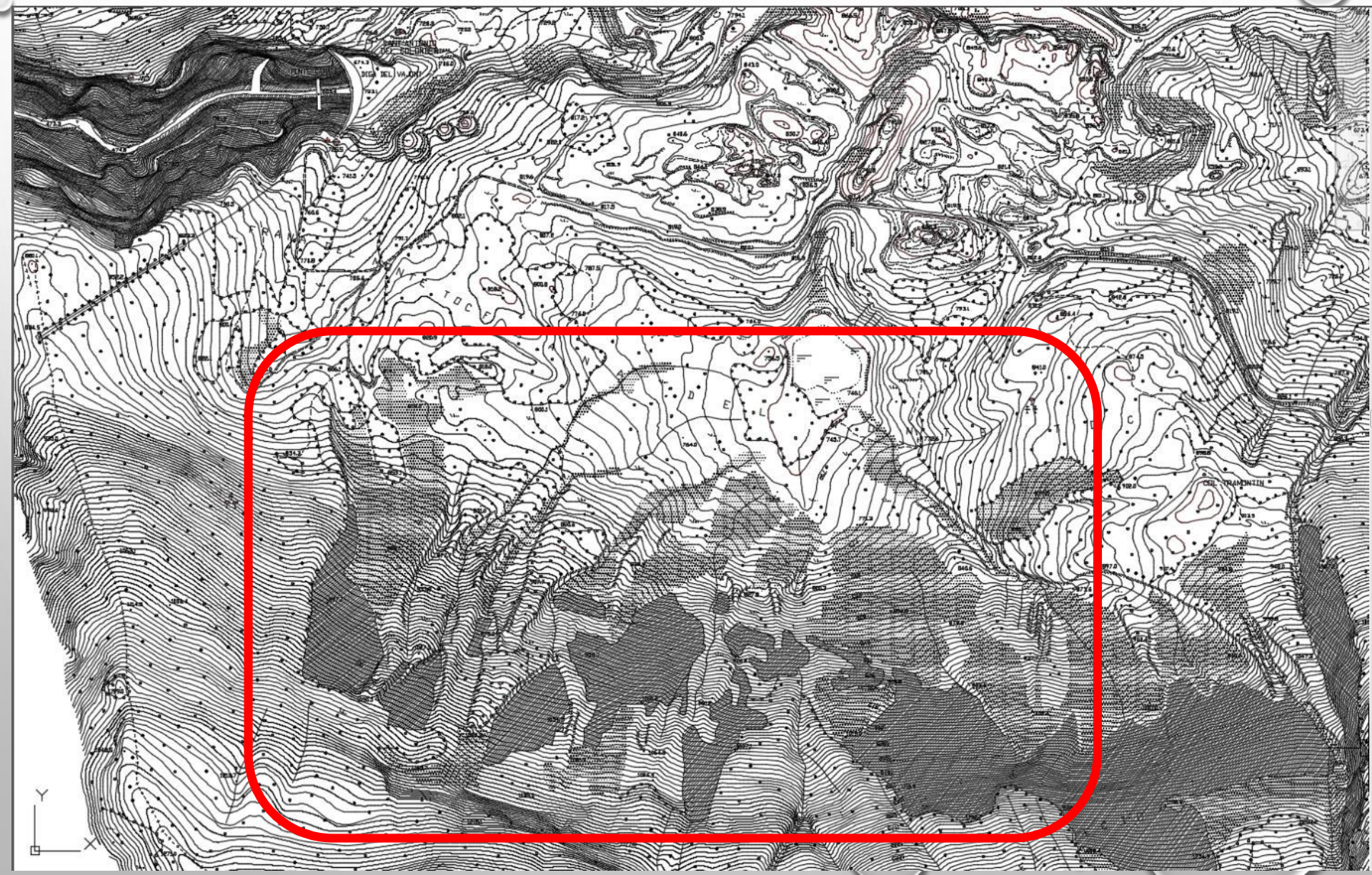
Forme legate alla gravità: frane



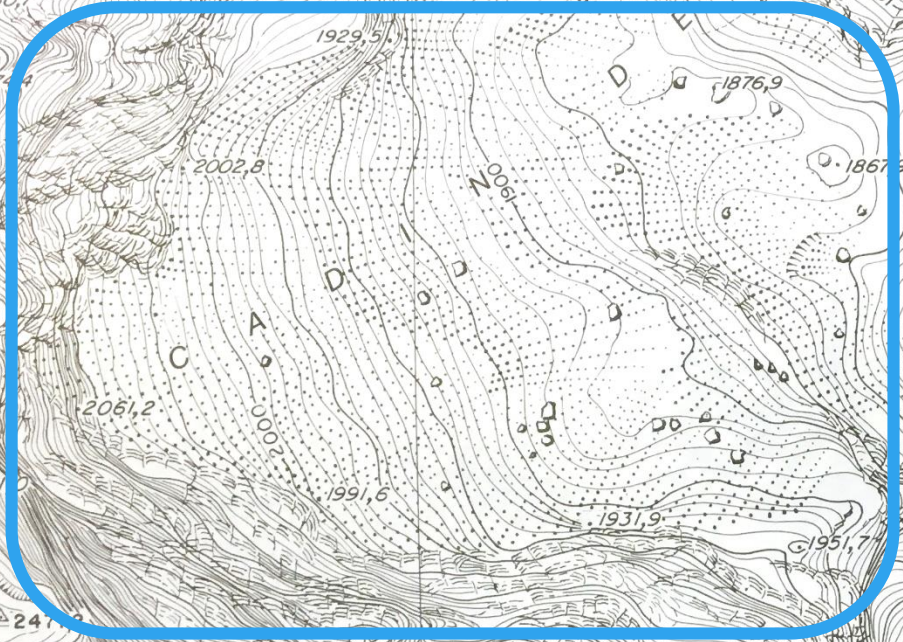
**Forme legate alla gravità:
detrito di falda**



Forme legate alla gravità: frana del Vajont



Circo glaciale,
depositi morenici e
detrito di falda



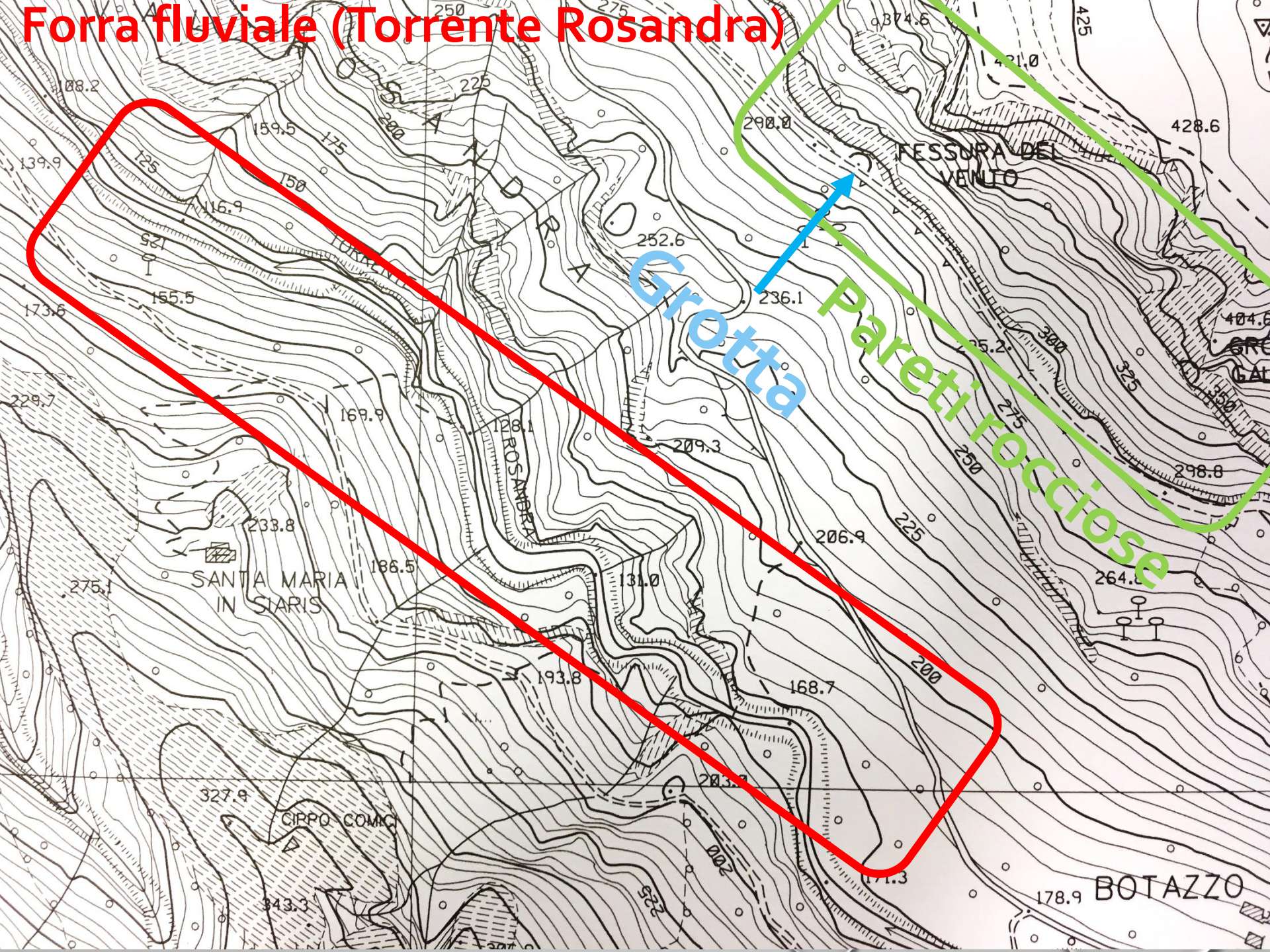
SOGLIA



detrito di falda

COL NUDO
2439,0

Forra fluviale (Torrente Rosandra)



Grotta

Pareti rocciose

SANTA MARIA
IN SIARIS

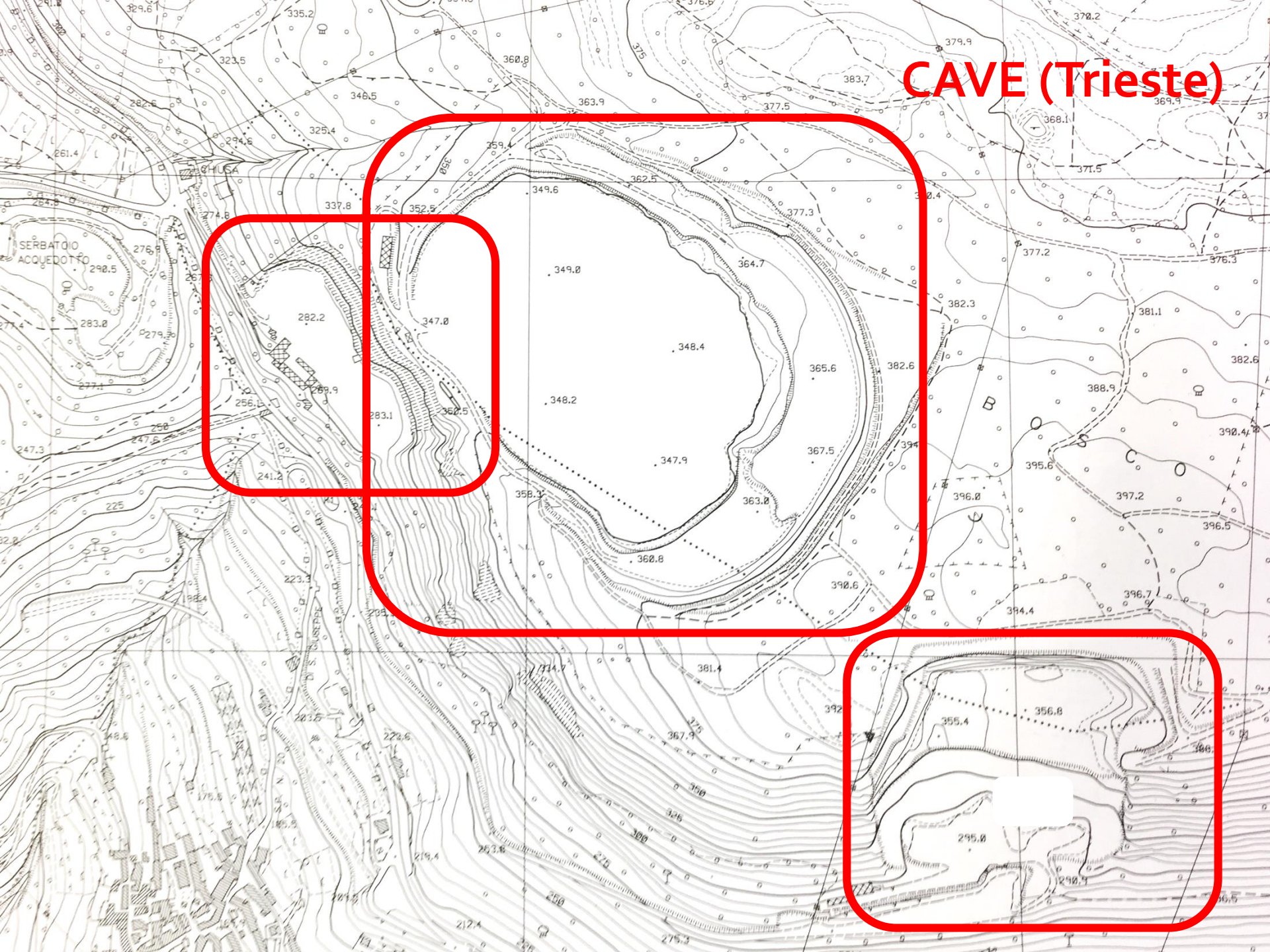
CIRPO COMICI

BOTAZZO

FESSURA DEL
VENTO

ROSANDRA

CAVE (Trieste)



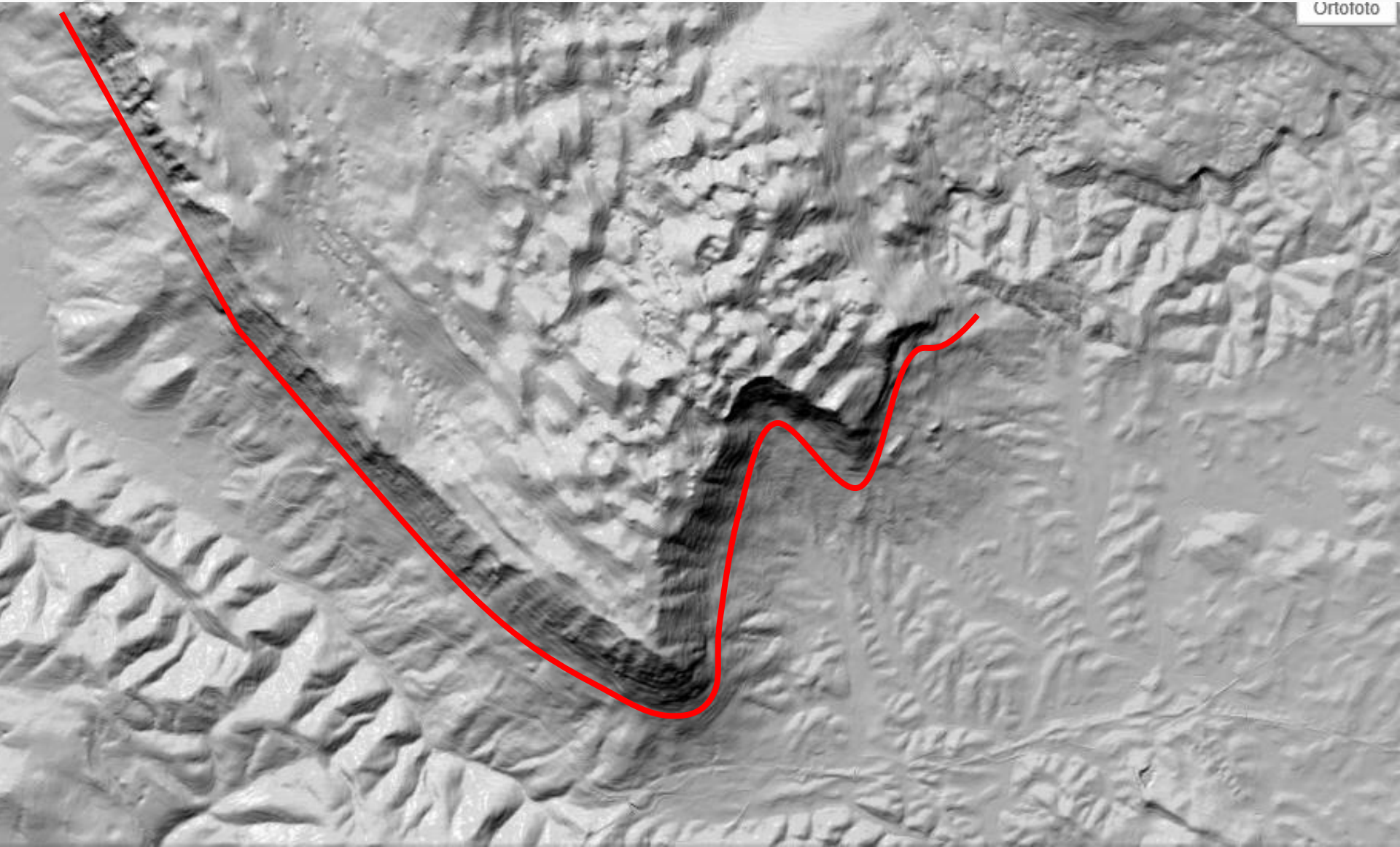
Falesie di Strugnano (Strunjan)

IMMAGINI SATELLITARI

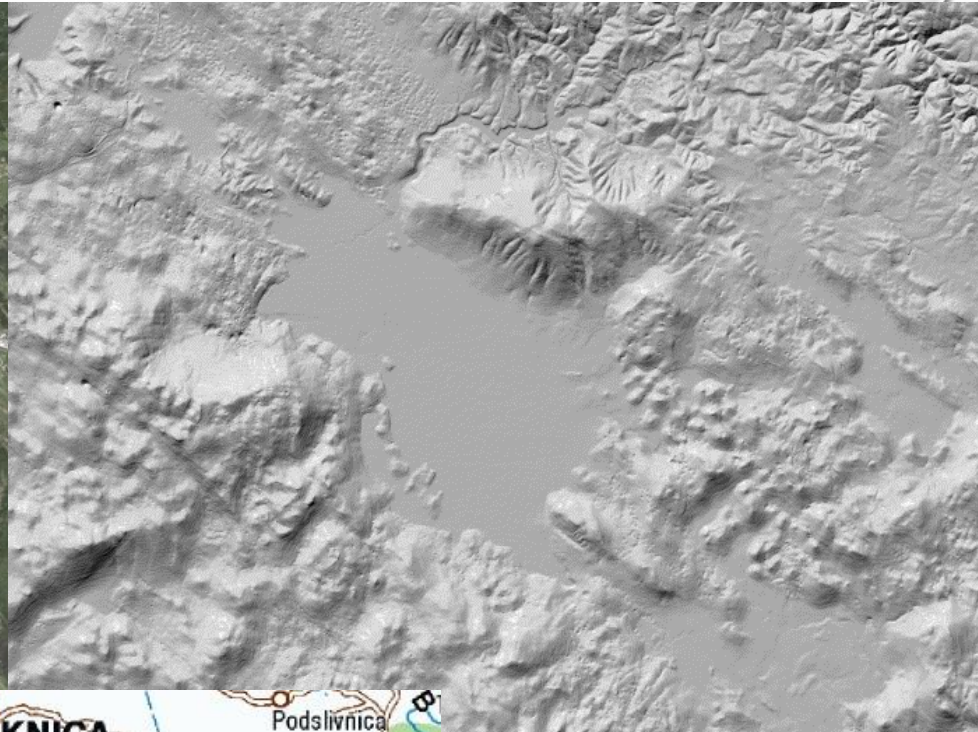
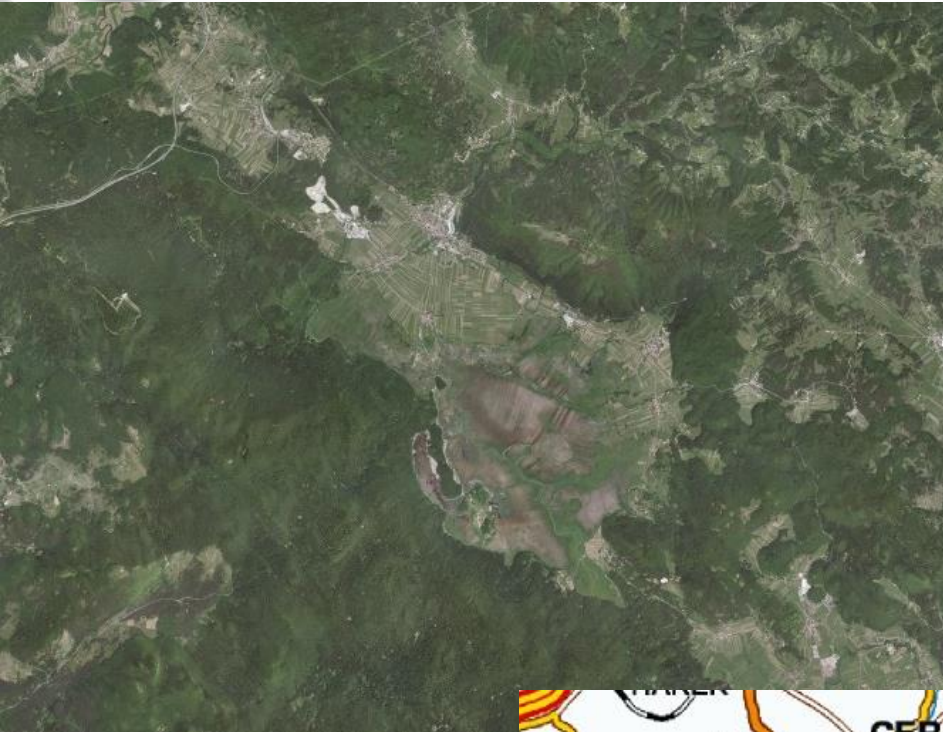


Condizionamento strutturale (Monte Nanos)

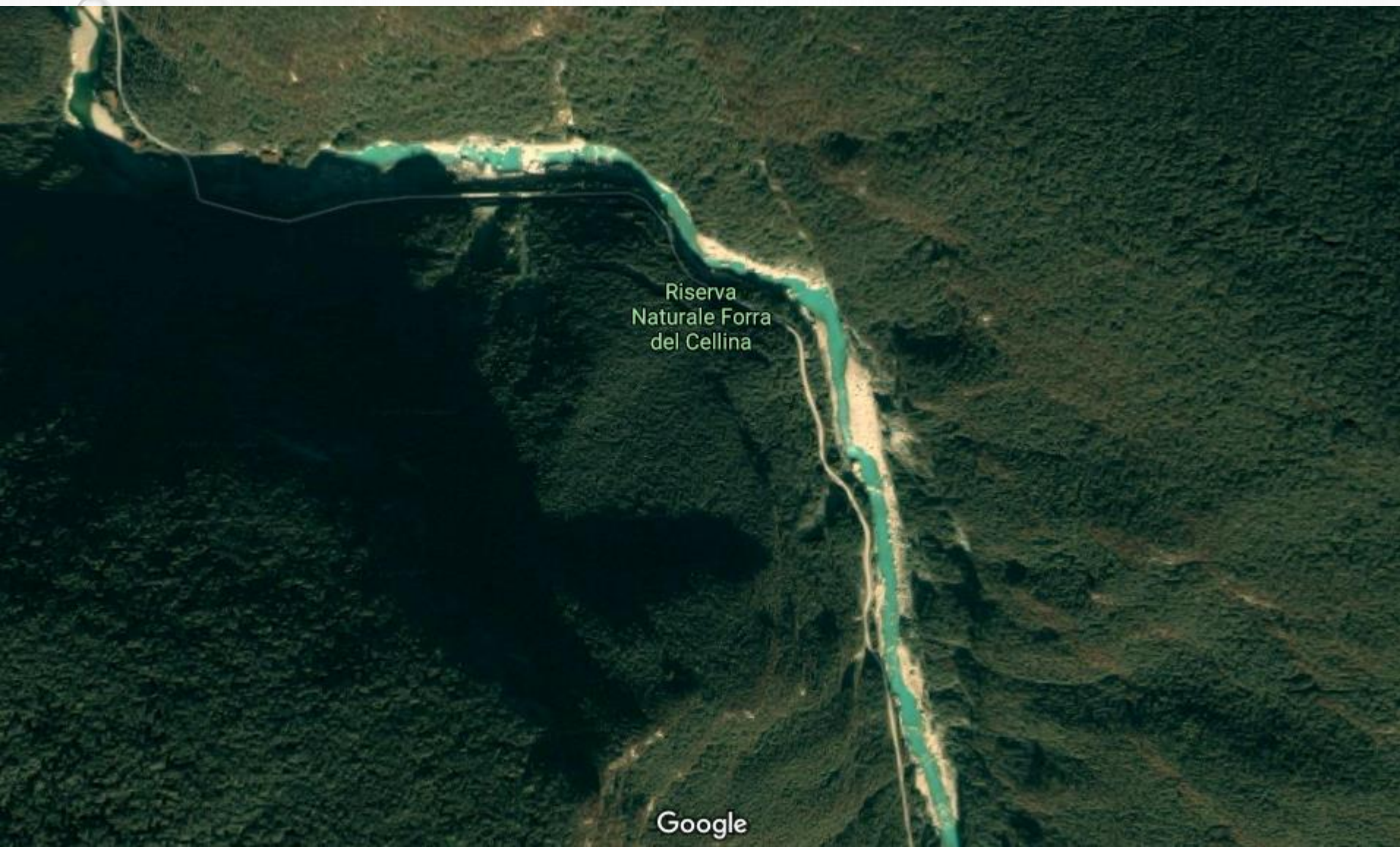
Ortototo



Lago carsico impostato su un importante lineamento strutturale: il Lago Circonio (Cerknisko Jezero)



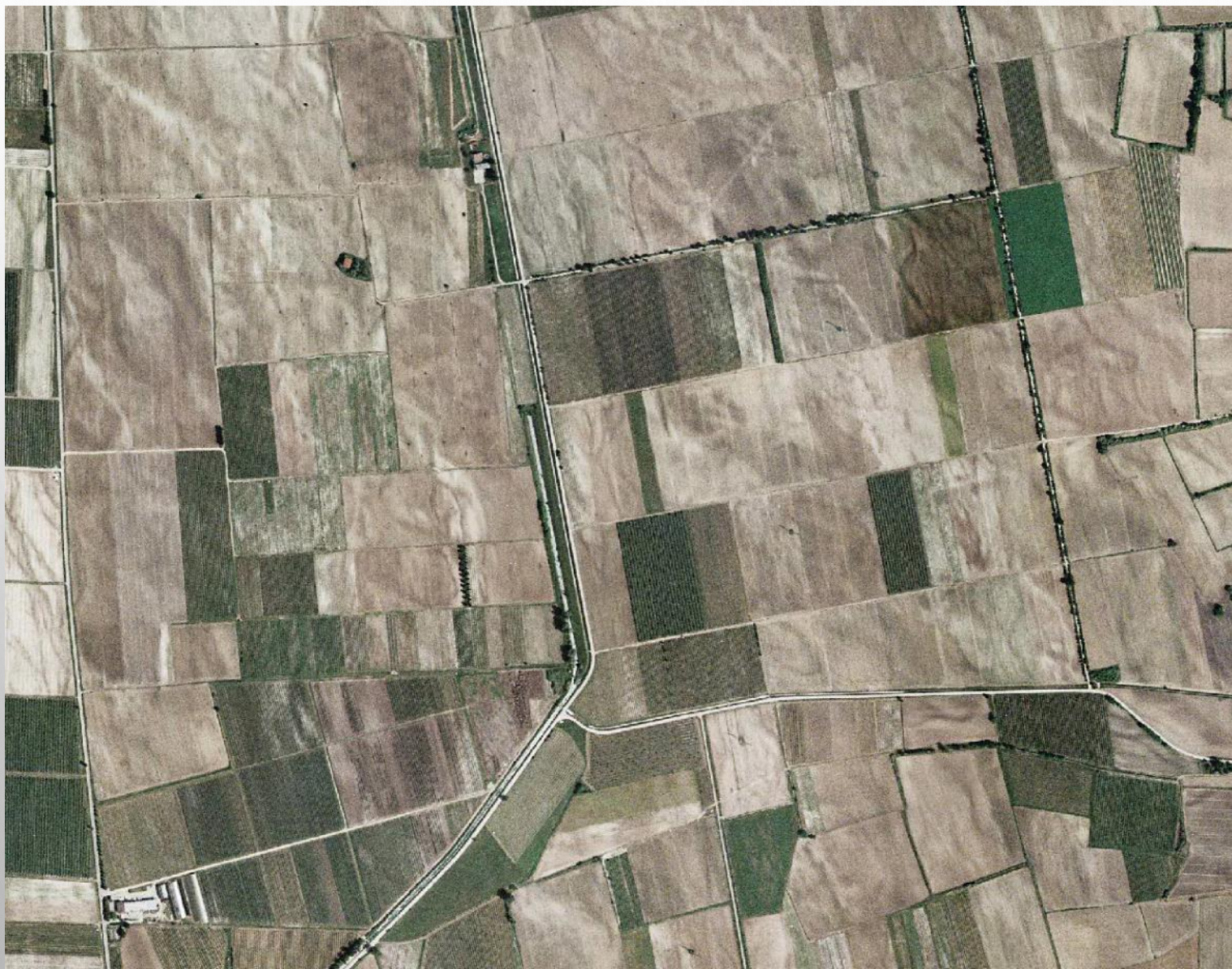
Forra fluviale (Torrente Cellina)



Riserva
Naturale Forra
del Cellina

Google

Tracce di canali fluviali estinti



Altopiano carsico, promontorio di Miramare



Delta del Tagliamento



Altipiano carsico, falesia di Sistiana-Duino



Frana del Vajont

