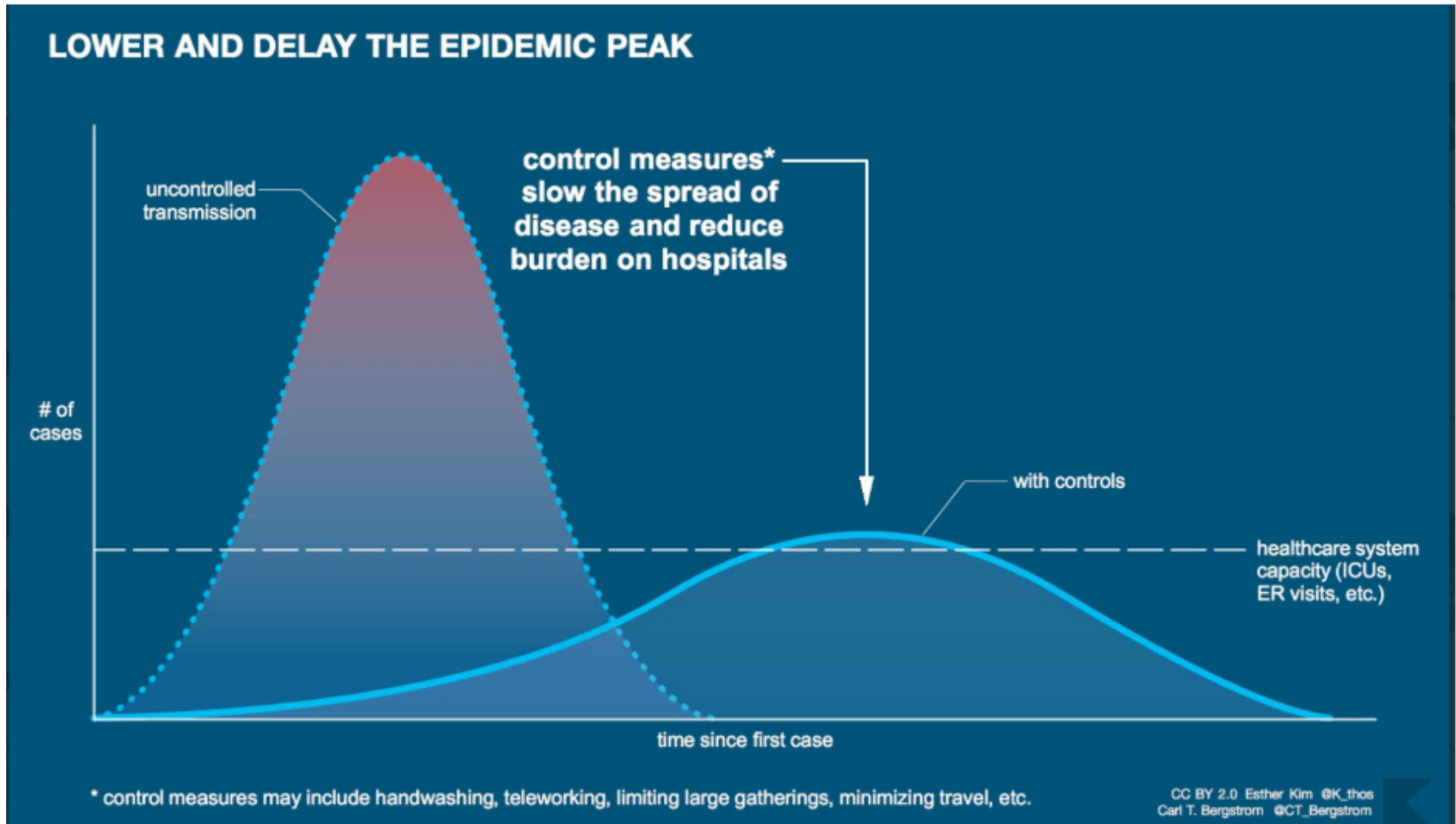


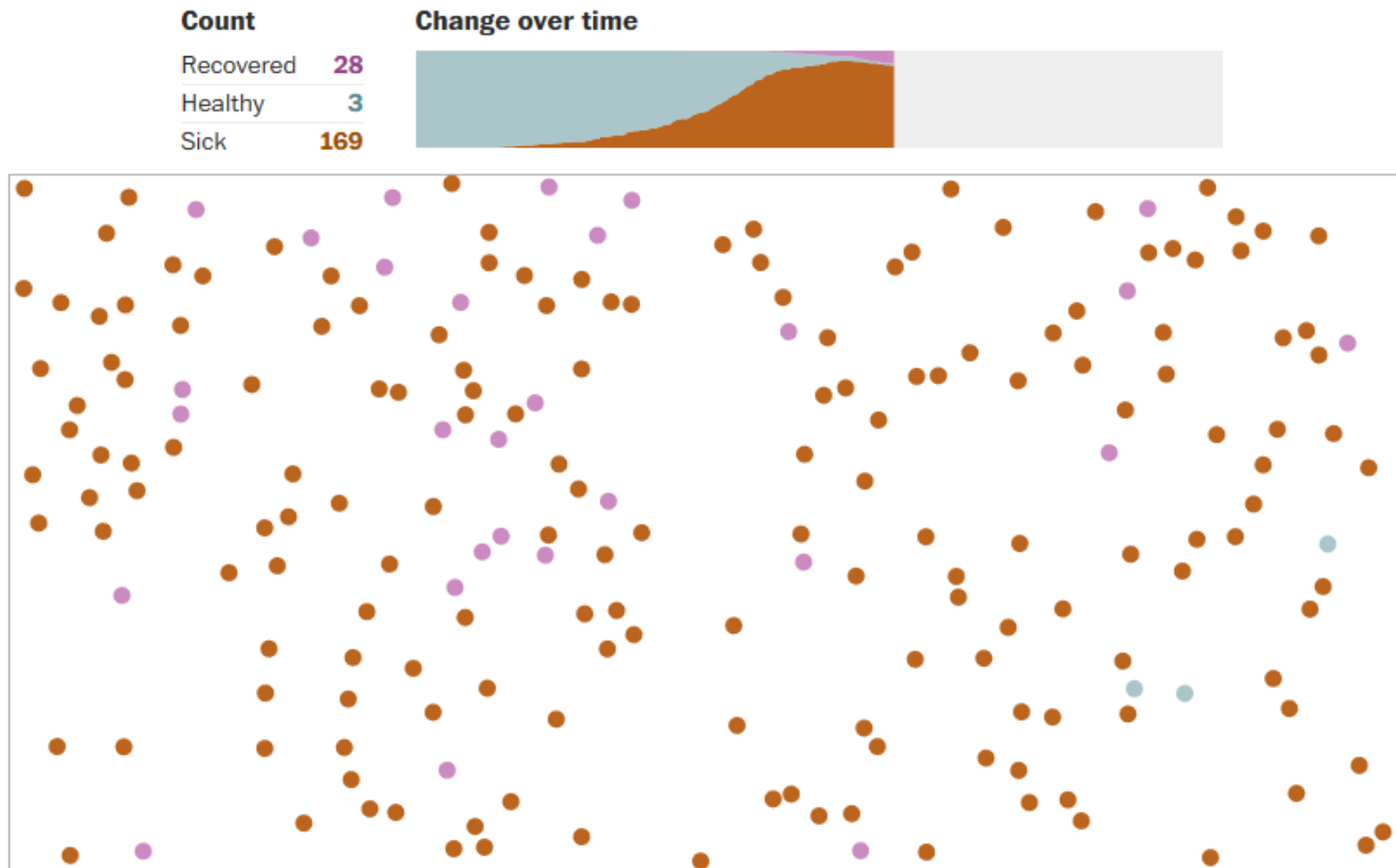
Data Visualization

VISUALIZING COVID-19

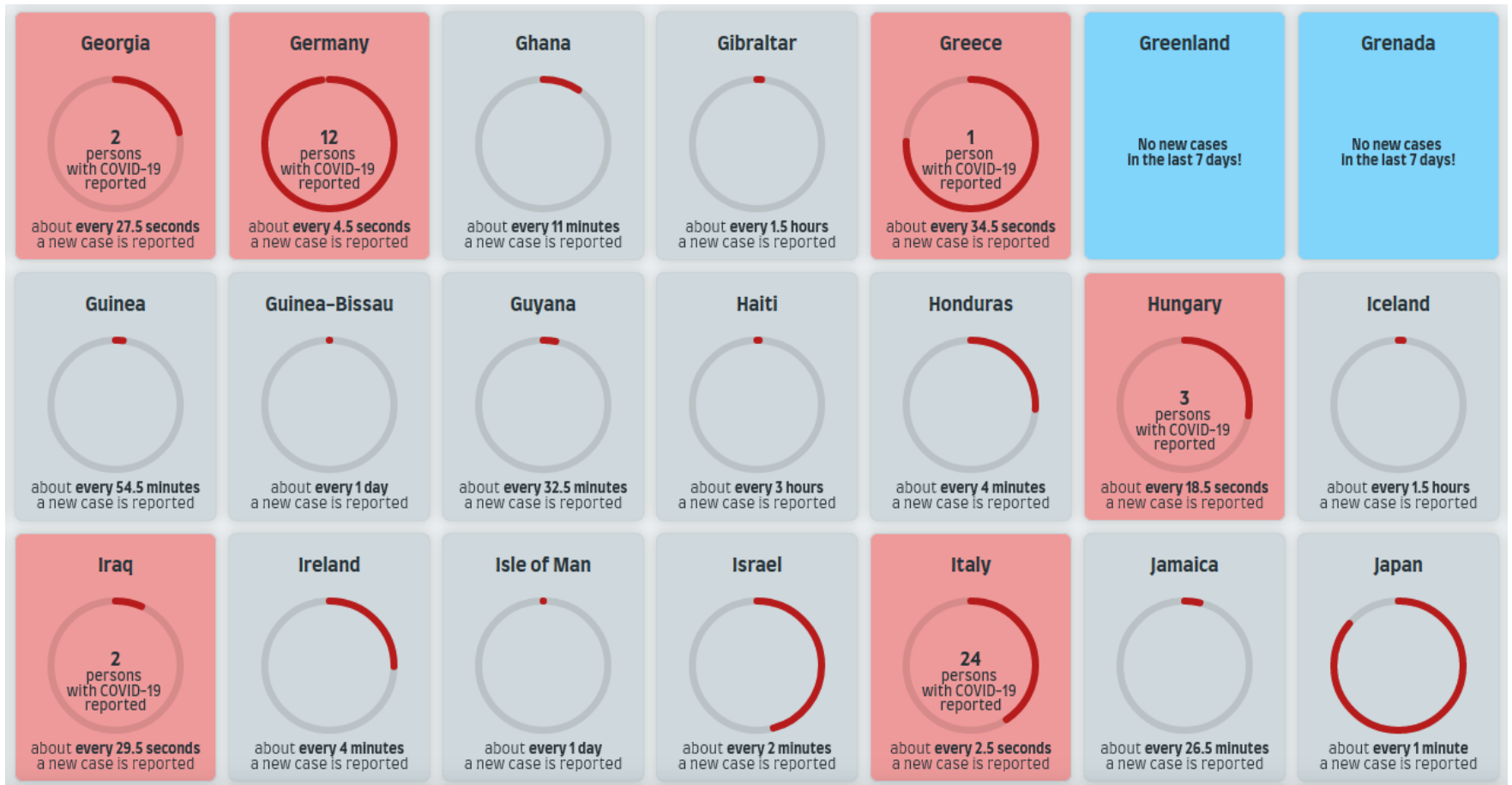
Flattening the curve



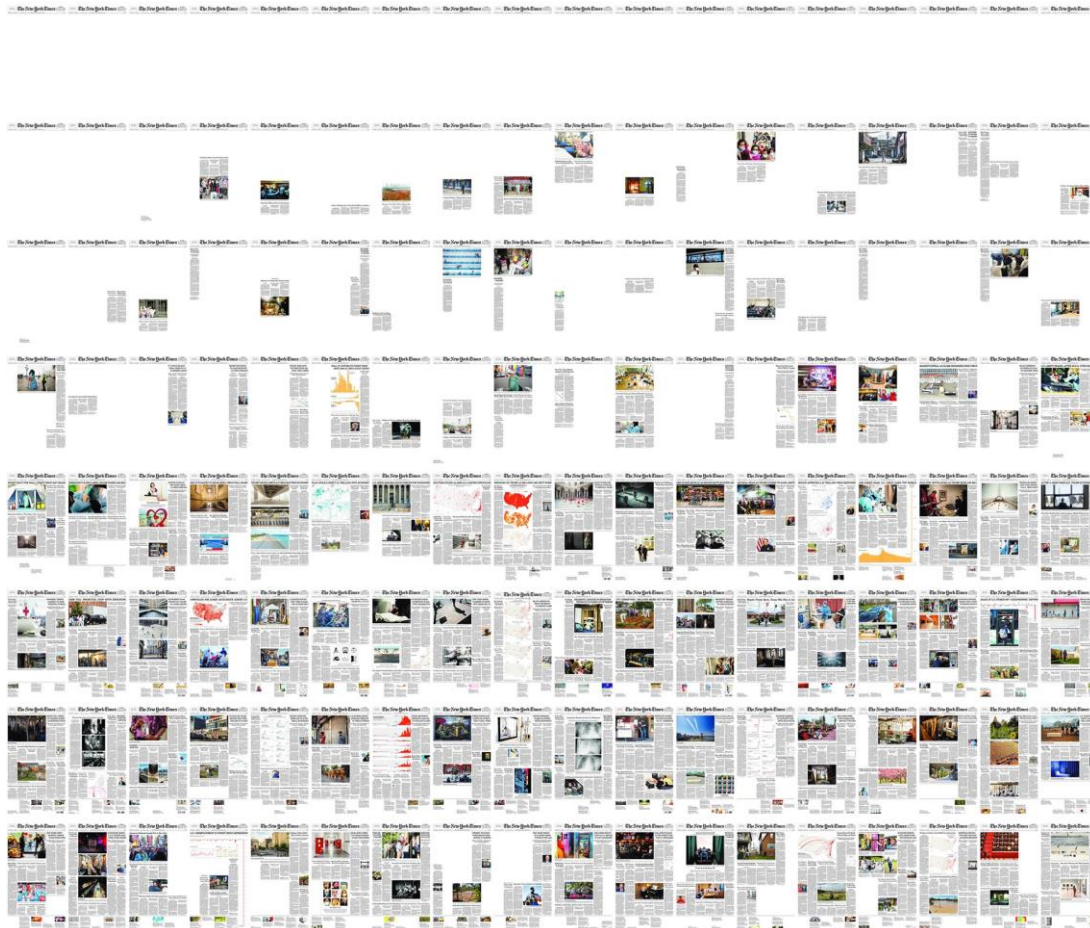
Explaining the exponential spread



Spreading rates



Coronavirus as a front page story in the New York Times



U.S. DEATHS NEAR 100,000, AN INCALCULABLE LOSS

They Were Not Simply Names on a List. They Were Us.

PHOTOGRAPH BY MICHAEL O'NEILL FOR THE NEW YORK TIMES. MICHAEL O'NEILL IS A PHOTOGRAPHER AND ARTIST WHO HAS COVERED THE NEW YORK TIMES FOR OVER 40 YEARS. HIS WORK IS KNOWN FOR ITS STRENGTH AND EMOTIONAL POWER.

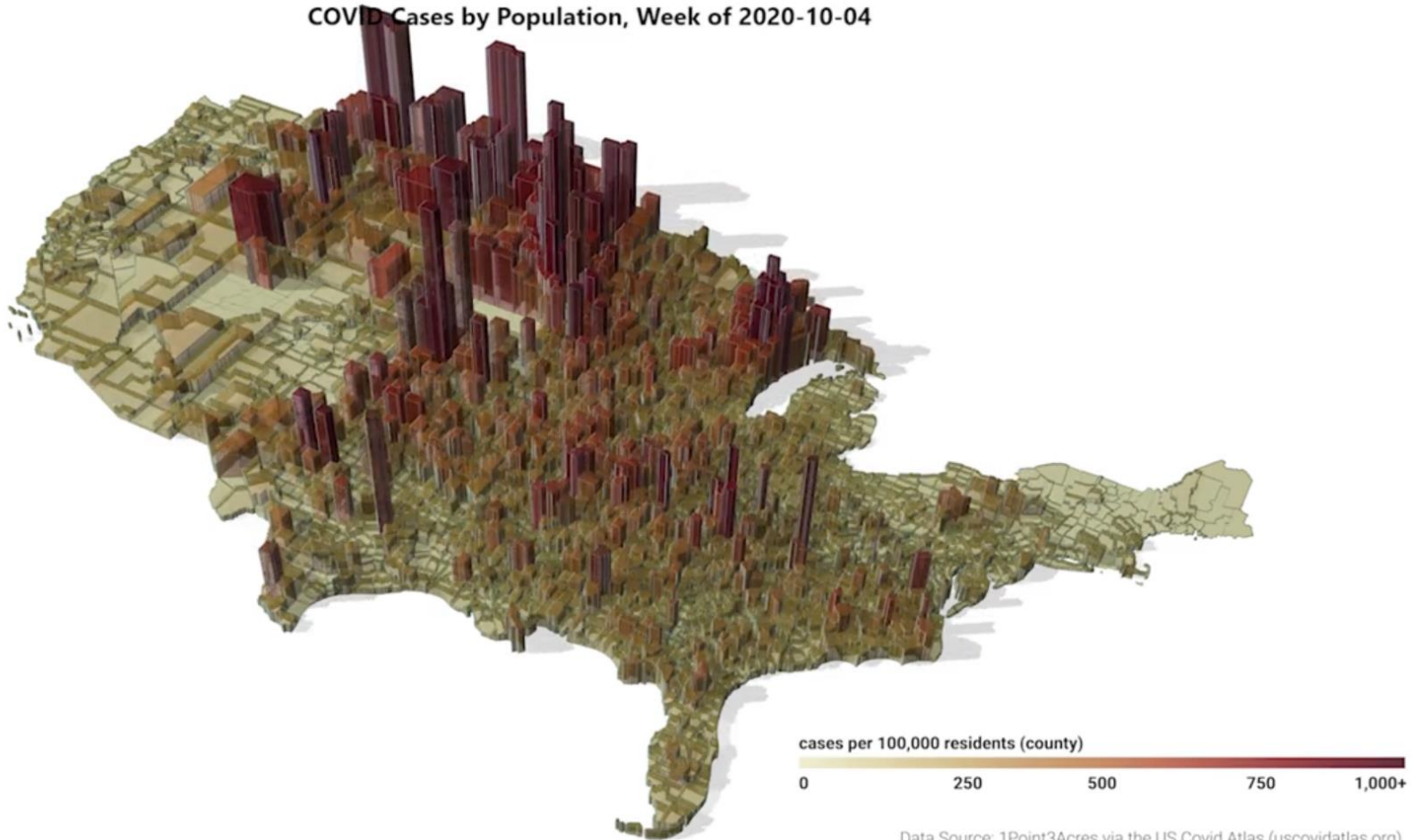
PHOTOGRAPH BY MICHAEL O'NEILL FOR THE NEW YORK TIMES. MICHAEL O'NEILL IS A PHOTOGRAPHER AND ARTIST WHO HAS COVERED THE NEW YORK TIMES FOR OVER 40 YEARS. HIS WORK IS KNOWN FOR ITS STRENGTH AND EMOTIONAL POWER.

PHOTOGRAPH BY MICHAEL O'NEILL FOR THE NEW YORK TIMES. MICHAEL O'NEILL IS A PHOTOGRAPHER AND ARTIST WHO HAS COVERED THE NEW YORK TIMES FOR OVER 40 YEARS. HIS WORK IS KNOWN FOR ITS STRENGTH AND EMOTIONAL POWER.

PHOTOGRAPH BY MICHAEL O'NEILL FOR THE NEW YORK TIMES. MICHAEL O'NEILL IS A PHOTOGRAPHER AND ARTIST WHO HAS COVERED THE NEW YORK TIMES FOR OVER 40 YEARS. HIS WORK IS KNOWN FOR ITS STRENGTH AND EMOTIONAL POWER.

Cases per 100k USA residents

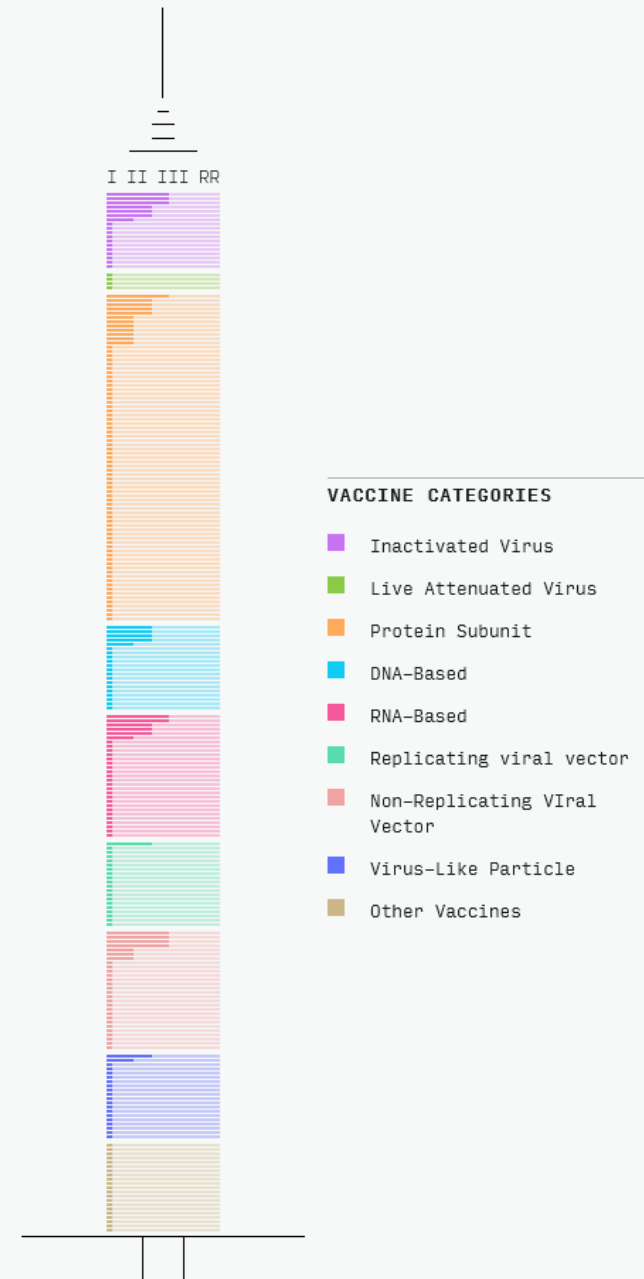
COVID Cases by Population, Week of 2020-10-04



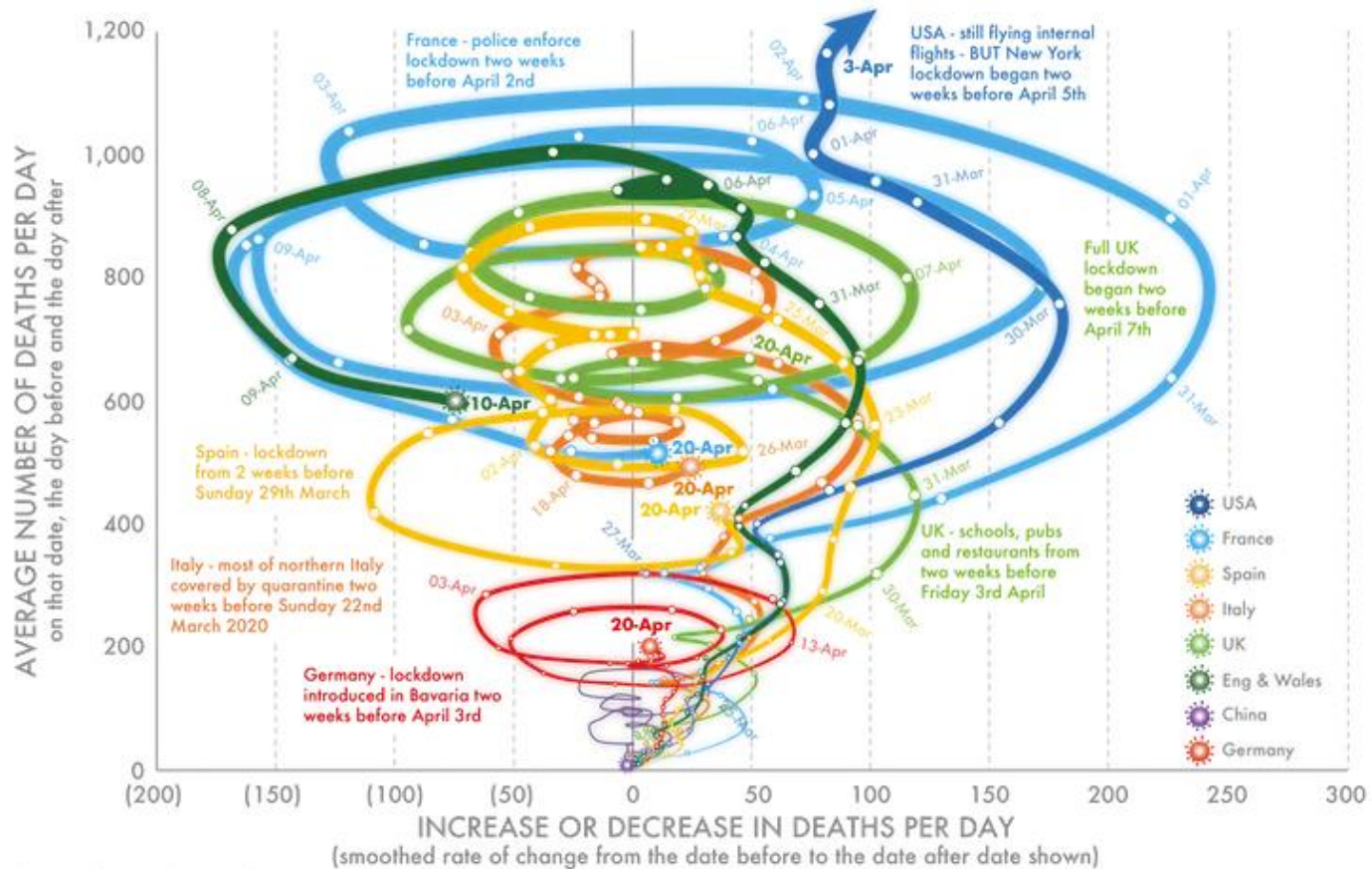
Data Source: 1Point3Acres via the US Covid Atlas (uscovidatlas.org)

March
April
May
June
July
August
September
October
November

Vaccines



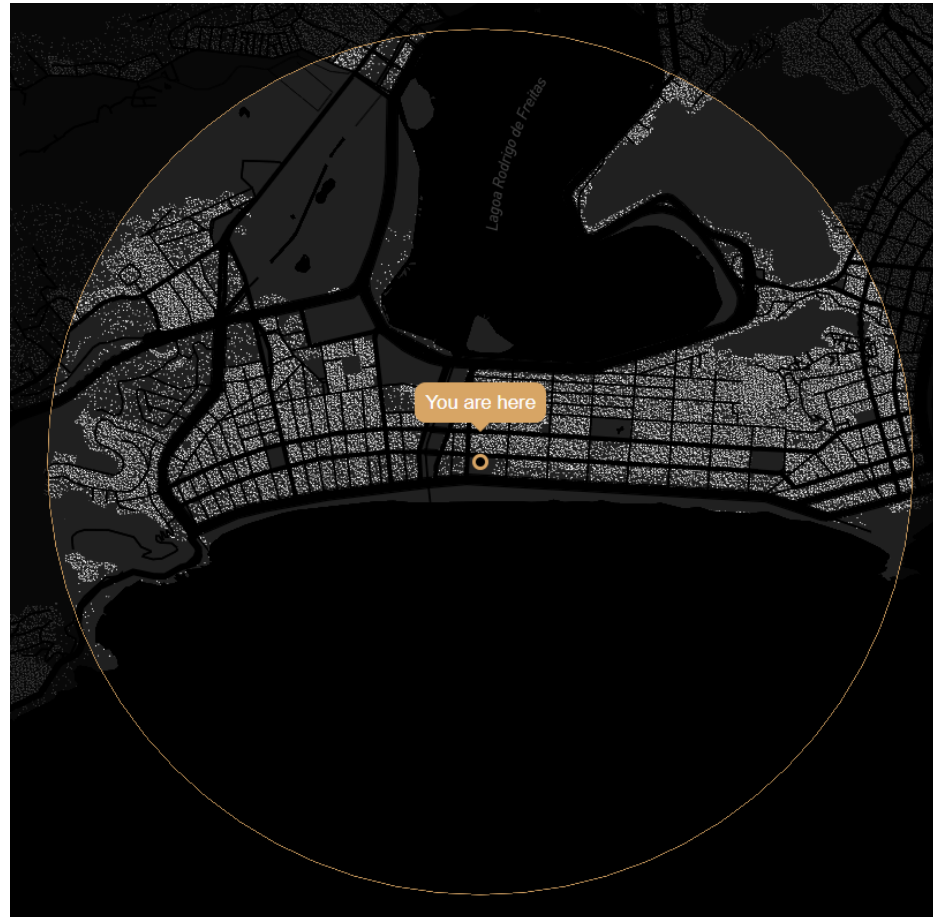
Rates of change in affected countries



DannyDorling.org. Illustration by Kirsten McClure @orpheuscat

Mortality in seven countries attributed to COVID-19 (January 23 to April 20, 2020) Danny Dorling, Author provided

Deaths in your neighborhood



Brazil: <https://piaui.folha.uol.com.br/lupa/epicentro/en/>

US: <https://www.washingtonpost.com/graphics/2020/national/coronavirus-deaths-neighborhood/>

Exceeded mortality

