

Corso di Botanica Sistemática

LEZIONE 1

**Presentazione docente e
generalità sul corso**





IL PICCOLO NATURALISTA

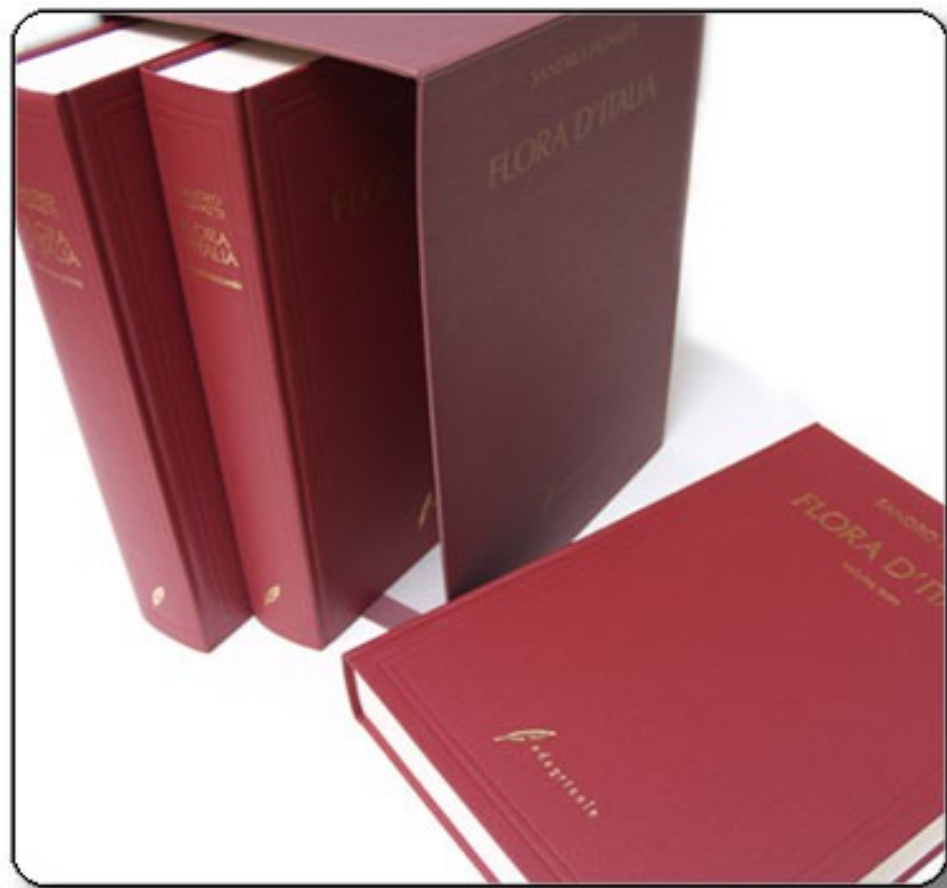


ANTONIO VALLARDI EDITORE

















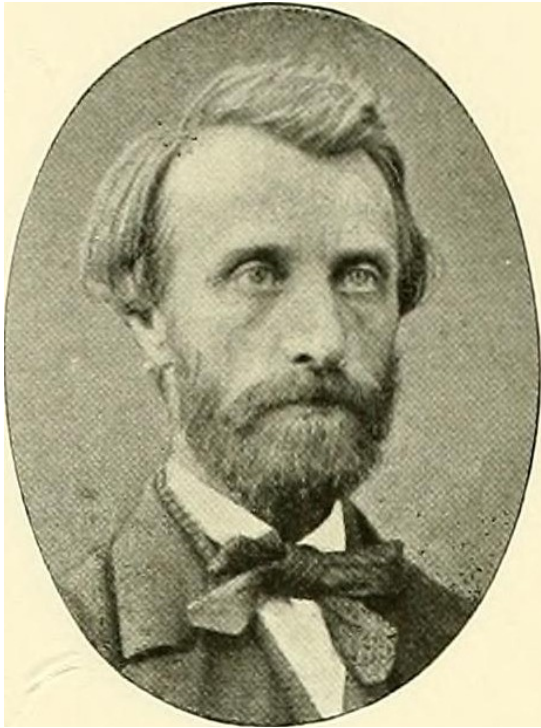


ARCTIC CIRCLE CROSSING

MILE 253.7 DEMPSTER HIGHWAY
REACHED AUG. 6 1977

FUNDED BY DEPT. INDIAN AND NORTHERN AFFAIRS
ENGINEERED BY CANADA DEPT. PUBLIC WORKS
CONTRACTOR GENERAL





J.M. Norman (1823-1903)

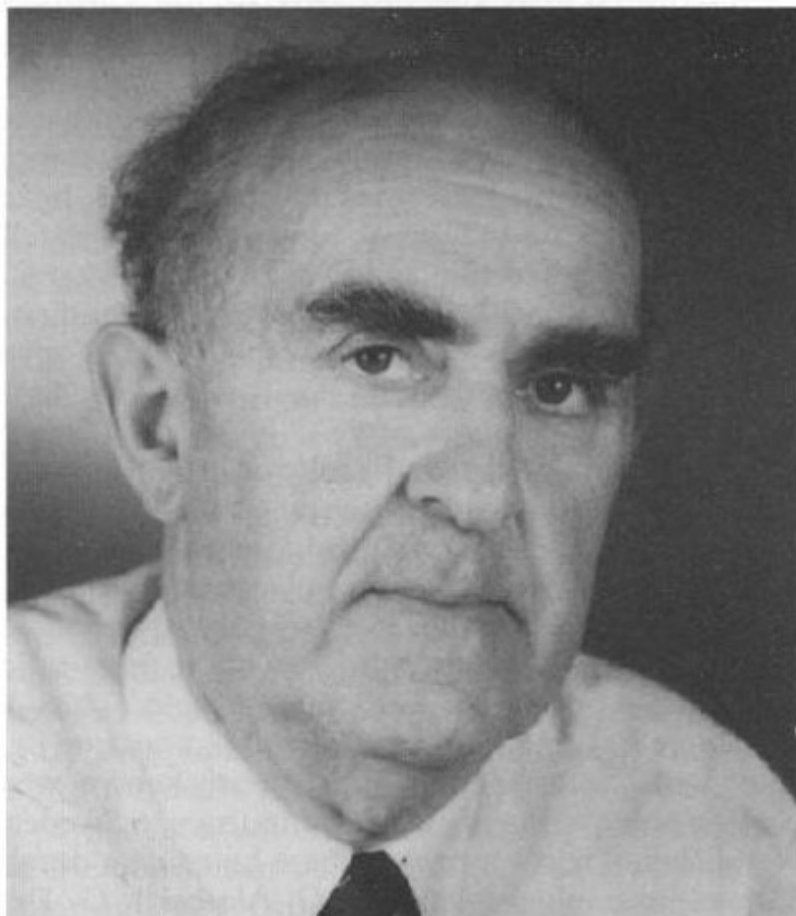


J.C. Flotow (1733-1356)



G.W. Koerber (1817-1885)

A TRIBUTE TO JOSEF POELT (1924–1995)







Società
Lichenologica
Italiana



La Società Lichenologica Italiana

La Società Lichenologica Italiana (S.L.I.) è dedicata alla diffusione e al progresso degli studi lichenologici in Italia.

La S.L.I. ogni anno organizza un convegno, corsi introduttivi e di specializzazione, riunioni scientifiche, escursioni e pubblica un Notiziario.

La S.L.I. collabora con altre società scientifiche aventi finalità analoghe, sia in Italia che all'estero.

The Italian Lichen Society (S.L.I.) is devoted to the diffusion and progress of lichenological studies in Italy.

The S.L.I. every year organizes a congress, introductory and specialization courses, scientific meetings, field excursions and publishes a bulletin.

The S.L.I. cooperates with other scientific societies having similar aims, both in Italy and abroad.

[La SLI](#)

[Attività](#)

[Bandi](#)

[Gruppi di Lavoro](#)

[Pubblicazioni](#)

[Home page soci](#)

[Personalia](#)

[Comunicare con la SLI](#)

courrier
de
l'ouest.fr



**INTERNATIONAL ASSOCIATION
FOR LICHENOLOGY
9TH SYMPOSIUM**

"UNLOCKING THE INNER LICHEN"

August 2-7 2020 | Bonito, MS - Brazil
Bonito Convention Center





Pier Luigi Nimis

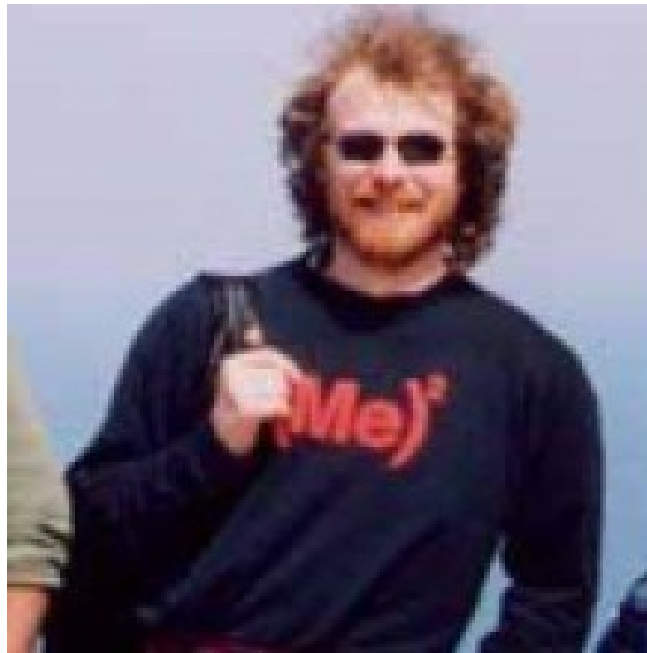


The Lichens of Italy

An annotated catalogue

Museo Regionale
di Scienze Naturali
Torino

MONOGRAFIA XII
1993



Abstract

ITALIC

The Information System on Italian Lichens

by L. Giamberini & G. Marone

Index

ITALIC is an information system on Italian lichen taxa held in tax, which especially addresses those tax users who are in charge of the identification of lichen taxa, of newly discovered lichens, of lichens of unusual distribution and those tax users who are interested in the lichen flora of particular geographical areas.

Information System on Italian Lichens

System Director: L. Giamberini
Coord. of System: Giamberini L. & Marone G.
In Collaboration with: Giamberini L. & Marone G.

Region: **Friuli**

Phytoclimatic belt: **Dry mediterranean**

Substrate:

Photosynthetic partner:

Growth form:

Phytoclimatic range:

Special requirements for water:

Only coastal species:

Only parasitic species:

Only pioneer species:

Only species of metal-rich substrata:

Reproductive Strategy:

Select two values for any parameter if you want to search in a range, or the same value in the two columns.

Indicator values for pH from: to

Indicator values for Light from: to

Indicator values for Water from: to

Indicator values for Eutrophication from: to

Altitudinal Range from: to

Poleotolerance from: to

Commonness-rarity status from: to

SUBMIT

List of taxa:

Acrocordia conoidea (Fr.) Körb. var. *conoidea*
Arthonia calcarea (Sm.) Ertz & Diederich
Bagliettoa baldensis (A. Massal.) Vezda
Bagliettoa calciseda (DC.) Gueidan & Cl. Roux
Bagliettoa marmorea (Scop.) Gueidan & Cl. Roux
Bagliettoa parmigera (J. Steiner) Vezda & Poelt
Bagliettoa parmigerella (Zahlbr.) Vezda & Poelt
Botryolepraria lesdainii (Hue) Canals, Hern.-Mar., Gómez-Bolea & Llimona
Caloplaca teicholyta (Ach.) J. Steiner
Candelariella aurella (Hoffm.) Zahlbr.
Catillaria lenticularis (Ach.) Th. Fr.
Circinaria caesiocinerea (Malbr.) A. Nordin, Savić & Tibell
Circinaria contorta subsp. *hoffmanniana* (R.Sant.) I. Zhdanov
Clauzadea chondrodes (A. Massal.) Hafellner & Türk
Clauzadea immersa (Hoffm.) Hafellner & Bellem.
Clauzadea metzleri (Körb.) D. Hawksw.
Clauzadea monticola (Schaer.) Hafellner & Bellem.
Collema flaccidum (Ach.) Ach.
Flavoplaca polycarpa (A. Massal.) Arup, Frödén & Søchting
Gyalolechia flavovirescens (Wulfen) Søchting, Frödén & Arup
Heteroplacidium imbricatum (Nyl.) Breuss
Lathagrium auriforme (With.) Otálora, P.M. Jørg. & Wedin
Lathagrium fuscovirens (With.) Otálora, P.M. Jørg. & Wedin
Lecidella stigmatea (Ach.) Hertel & Leuckert
Lepraria eburnea J.R. Laundon
Lepraria finkii (B. de Lesd.) R.C. Harris
Lepraria nivalis J.R. Laundon
Lepraria vouauxii (Hue) R.C. Harris
Leproplaca xantholyta (Nyl.) Hue



Dryades
project



UNIVERSITÀ
DEGLI STUDI DI TRIESTE
Dipartimento di Scienze della Vita

smaTs
sistema mondiale di stenoC

MENU

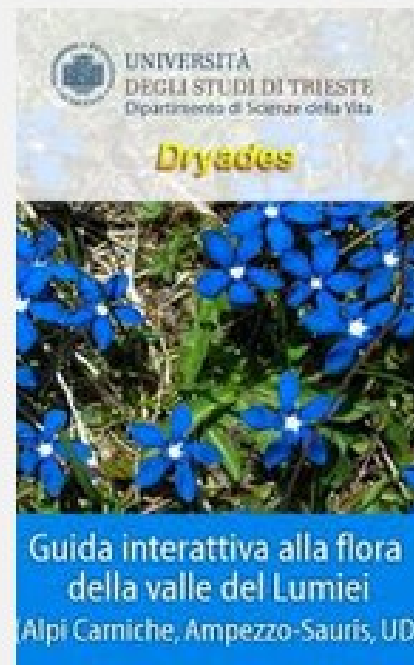
ADMIN SECTION - FRIDA 3.0

Username:

Password:

This software may not work correctly with Internet Explorer.
Please, use another browser.

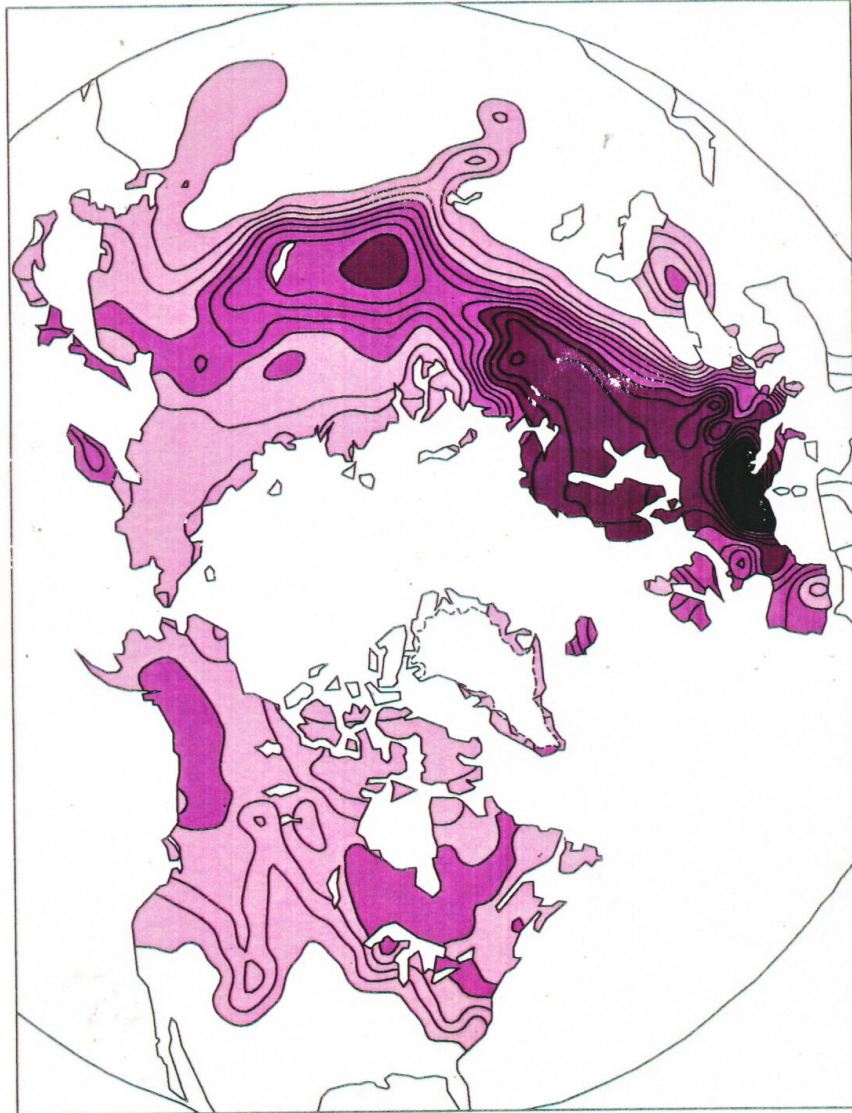








PRODUCT	Nr.Unique Visitors	Source
Keys	1.243.563	Statcounter
Portals	672.705	Statcounter
SiiT Webpage	71.465	Google Analytics
TOTAL	1.987.733	

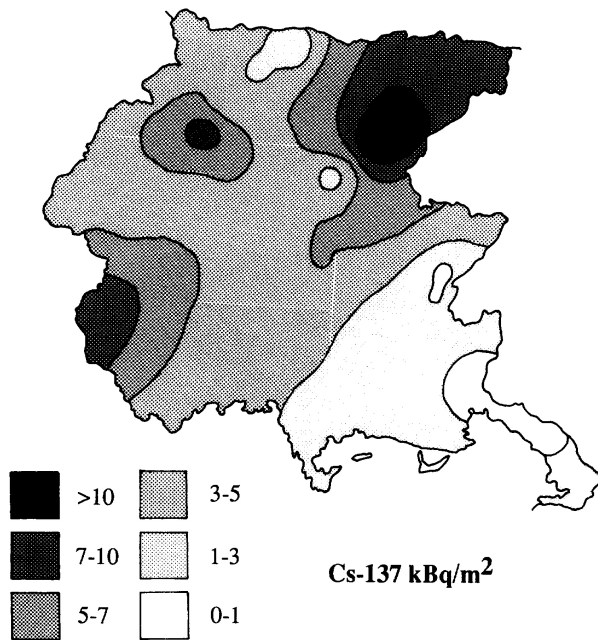


**2nd Caesium Workshop:
meeting challenges for Fukushima recovery**

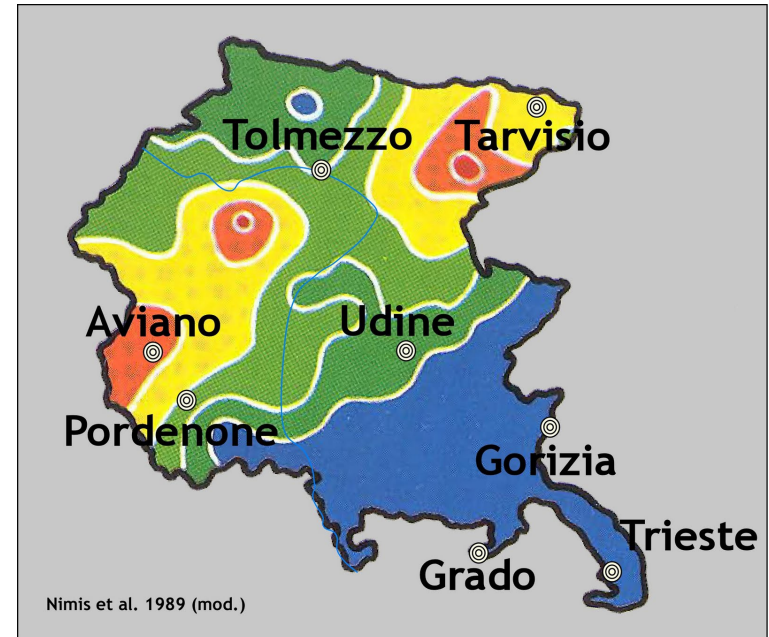
Assessing radiocontamination in forest ecosystems

Pier Luigi Nimis

Dept. of Life Sciences – University of Trieste (Italy)



Mosses 1990 (Bq/m²)



Mushrooms 1986 (Bq/kg)

The results of the 1990 campaign (less than a week):
mosses are optimal bioaccumulators!



Images		
	<p>37 Apothecia perithecioid, or immersed in thalline warts</p>	40
	<p>38 Thallus C+ and KC+ red. Varioliaric acid absent</p> <p><i>Ochrolechia balcanica</i> Verseghy [1256]</p>	
	<p>39 C+ yellow, KC- or KC+ yellow. Gyrophoric acid absent</p> <p><i>Ochrolechia szatalaensis</i> Verseghy [1259]</p>	
	<p>39 Apothecial disc C+ or at least KC+ red. Gyrophoric acid present</p> <p><i>Ochrolechia pallidescens</i> (L.) A. Massal. [930]</p>	

Portularia portuensis var. *rapaestris* (DC.) Dalla Torre & Sacc.



Felix Schmitt - CC BY-SA 4.0

Image from: F. Schmitt (2009) - Flechten-Makroziele, der Kantone und Anstalt, Birk, (BRG) - ISBN: 978-3-00-021700-3

Thallus crustose, epibiotic, continuous to (rarely) finely cracked, yellowish white to pale grey or cream-colored, smooth to tuberculate, sometimes zoned at margin, forming large patches. Apothecia perithecioid, completely immersed in scattered, heavily striated, 1-3 mm wide, sordid-brown leafy warts with often slightly flattened apex, opening through a punctiform, black ostiole (3-10 ostioles per wart). Epithecia dark brown to black-brown, K- hymenium colorless; paraphyses long, branched and richly anastomosing; hyphectium colorless to pale yellow. Anzi 2(-4)-spored, cylindrical, with thick amyloid walls, *Portularia*-type. Ascospores 1-celled, hyaline, ellipsoid, (120-)150-170 x (15-)40-60-80 µm, with a 7-15 µm thick, 2-layered, smooth wall. Pycnidia rare, immersed. Conidia asexual, yellow, 8.5-9.7 µm. Phaeoblasts ellipsoid. Spot tests: Duffus K+ yellow, C-, KC+ yellow, P- orange-yellow UV+ pale orange. Chemistry: 4,5-dibromoisovanilic, stictic acid, conioctic and norstictic acids (minor).



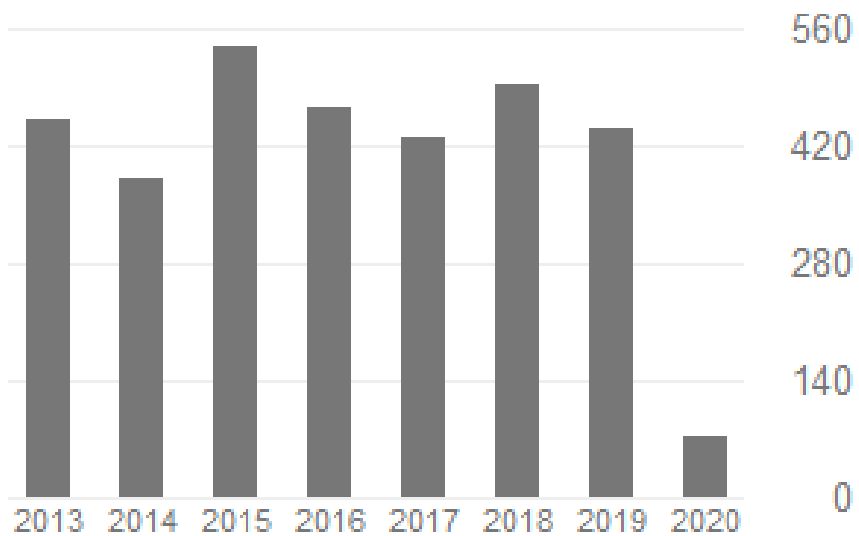
06/10 Tue 10 Mar Not Secure - italc.unife.it

<p>37 Apothecia perithecioid, or immersed in thalline warts</p> <p>38 Thallus C+ and KC+ red. Varioliaric acid absent</p>	<p><i>Ochrolechia balcanica</i> Verseghy</p> <p>Thallus crustose, epibiotic, white to cream-colored, smooth to verrucose and uneven, sometimes delimited by a white prothallus. Apothecia lecaniote, 2-6 mm across, with a pale brown to pale reddish brown, epurine, slightly convex to flat disc, and a thick, prominent, smooth thalline margin. Cortex of the thalline margin well developed, with a well-differentiated medulla; epithecia pale brown, granular; the granules dissolving in K; hymenium colorless; paraphyses thin, densely branched and anastomosing; hyphectium colorless to yellowish, underlain by a continuous algal layer. Anzi 16-18-spored with thick, amyloid walls, <i>Portularia</i>-type. Ascospores 1-celled, hyaline, broadly ellipsoid, 45-63 x 20-32 µm. Pycnidia pale pinkish brown. Conidia cylindrical, straight. Phaeoblasts chlorococcoid. Spot tests: thallus K+ pale yellow, C+ red, KC+ red, P-; disc of apothecia C+ carmine red. Chemistry: gyrophoric and lecanoric acids. Note: common and abundant in humid beech forests of the Apennines, rare in oak forests of Tyrolean Italy. Apparently absent from the Alps, this cosmopolitan lichen probably belongs to an ancient, pre-glacial, Mediterranean-montane element which is well worthy of further study.</p>	40
<p>39 C+ yellow, KC- or KC+ yellow. Gyrophoric acid absent</p>	<p><i>Ochrolechia szatalaensis</i> Verseghy</p> <p>Thallus crustose, endosubstrate or epibiotic, continuous to rimose-areolate, yellowish grey, whitish grey or pale brown, usually without a distinct prothallus. Apothecia lecaniote, 1-2.5 mm across, sessile, rounded or irregular, with a slightly convex to flat, flesh-colored but densely yellowish or brownish grey pruinose disc, and a thick, entire or rarely fissured, smooth or rough thalline margin. Amphiblastium coriaceous, the cortex laterally thinner and a well-differentiated, the medulla rich in algal cells, excupular ring or discoid like tissue absent, proper exciple well-developed; hymenium colorless, 100-120-300 µm high; hyphectium yellowish. Anzi 14-16-spored, with thick, amyloid walls, <i>Portularia</i>-type. Ascospores 1-celled, hyaline, ellipsoid but often deformed, rather variable in size: 10-80 x (13-)20-43 µm. Phaeoblasts chlorococcoid. Spot tests: Duffus K-, C-, KC+ pink, P-, UV+ white; medulla C-, KC-; apothecial margin C+ yellow and partially (inner part only) C-, KC+ pink, pruinose of the apothecial disc usually C+ yellow. Chemistry: thallus with varioliaric acid (major), accompanied by different unknown substances, often with abietonic acid, and substances of the mucic acid complex. Note: a cool-temperate to boreal-montane species with optimum on twigs in humid and cold sites, widespread both in the Alps and along the Apennines.</p>	39
<p>39 Apothecial disc C+ or at least KC+ red. Gyrophoric acid present</p>	<p><i>Ochrolechia pallidescens</i> (L.) A. Massal.</p> <p>Thallus crustose, rather thick (0.5-2 mm), smooth to wrinkled or areolate, dull, whitish, ochre grey or pale brown, forming patches to 5 cm across (usually less). Apothecia lecaniote, round to (more rarely) irregular, 1-3 mm across, with a flat, pink-ochre, finely white pruinose disc and a very thick, smooth, prominent thalline margin. Cortex of the thalline margin well developed, in upper part up to 70 µm, with a well-differentiated medulla; proper exciple well visible in section, especially often forming a ring around disc; hymenium colorless, 250-300 µm tall; paraphyses thin, densely branched and</p>	

Cited by

[VIEW ALL](#)

	All	Since 2015
Citations	8226	2458
h-index	44	23
i10-index	168	52







ORGANIZZAZIONE DEL CORSO ¶





- 1) · **SISTEMATICA**¶
- 2) · **EVOLUZIONE·DEI·CICLI·METAGENETICI**¶
- 3) · **MICOLOGIA**¶
- 4) · **GEOBOTANICA**¶

ERBARIO ?

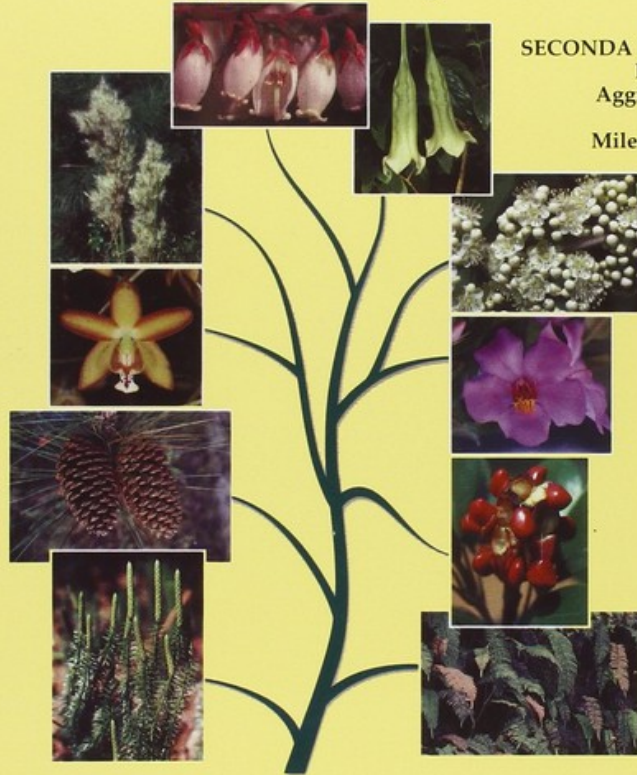


Judd · Campbell · Kellogg · Stevens · Donoghue

BOTANICA SISTEMATICA

Un approccio filogenetico

SECONDA EDIZIONE
Revisione e
Aggiornamento
a cura di
Milena Rizzotto



Edizione italiana a cura di
M. Bigazzi, F. Bracco, L. Cornara, F. Macchia, M. Mariotti,
C. Nepi, A. Papini, M. Raffaelli, M. Rizzotto, F. Selvi

PICCIN



Stai utilizzando un accesso da ospite (Accedi)



UNIVERSITÀ
DEGLI STUDI DI TRIESTE

Moodle@UniTs Corsi Supporto



Corsi Dipartimento di Scienze della Vita Laurea triennale (DM270) SM40 - SCIENZE E TECNOLOGIE PER L'AMBIENTE E LA NATURA A.A. 2019 - 2020
074SM - BOTANICA SISTEMATICA CON LABORATORIO 2019 Opzioni di iscrizione

Navigazione

Home

- ▶ Moodle@Units
- ▼ Corso in uso
 - 074SM - BOTANICA SISTEMATICA CON LABORATORIO 2019
- ▶ Corsi

Opzioni di iscrizione

074SM - BOTANICA SISTEMATICA CON LABORATORIO 2019

Teacher: PIERLUIGI NIMIS

▼ Iscrizione spontanea (Student)

Gli ospiti non possono entrare in questo corso, per favore autenticati.

[Continua](#)



Botanica Sistemática con laboratorio - UNITS

Public group

About

Discussion

Members

Events

Videos

Photos

Files



FINE DELLA LEZIONE Nr. 1