

# AALBORG UNIVERSITY

## overview & activities

Vincenzo Liso  
Department of Energy Technology  
Aalborg University



# Locations



# Aalborg



**"the biggest carnival in northern Europe"**



**"Jomfru Ane Gade (English: Virgin Anne's Street), It is said to be the street with the longest continuous stretch of restaurants and bars in Denmark"**



**"According to a new study from the European Commission, Aalborg is home to the happiest people in all of Europe."**



# Aalborg University facts

Aalborg University (AAU) was founded in 1974.

It offers education within the fields of

- natural sciences,
- social sciences,
- humanities,
- technical and health sciences.

HUMANITIES	SOCIAL SCIENCES	ENGINEERING AND SCIENCE	MEDICINE
Department of Communication and Psychology	Department of Sociology and Social Work	Department of Architecture, Design and Media Technology	Department of Health Science and Technology
Department of Culture and Global Studies	Department of Culture and Global Studies	Department of Electronic Systems	Department of Clinical Medicine
Department of Learning and Philosophy	Department of Learning and Philosophy	Department of Civil Engineering	
	Department of Business and Management	Department of Business and Management	
	Department of Political Science	Department of Computer Science	
	Department of Law	Department of Energy Technology	
		Department of Physics	
		Department of Biotechnology, Chemistry and Environmental Engineering	
		Department of Mathematical Sciences	
		Department of Mechanical and Manufacturing Engineering	
		Department of Development and Planning	
		Danish Building Research Institute	



# The Aalborg PBL model

- **Problem Based Learning**  
Based on real-life problems
- **Project Organized Education**  
Project work supported by lectures and courses
- **Group Work - groups of four to six students**  
Supervised by lecturers/professors
- **Interdisciplinary Studies**  
Integration of theory and practice - Focus on Learning to Learn and methodological skills
- **University Wide Model**  
Used in all faculties (with variations)



# Key figures 2017

Regular students	20.729
-Thereof international students	3.174
Part-time students	2.549
PhD students	839
Academic staff (full-time)	2.321
Academic staff (part-time)	800
Administrative staff (full time)	1.409
Administrative staff (part-time)	543
Research publications	5.945
Financing (DKK million)	2.845

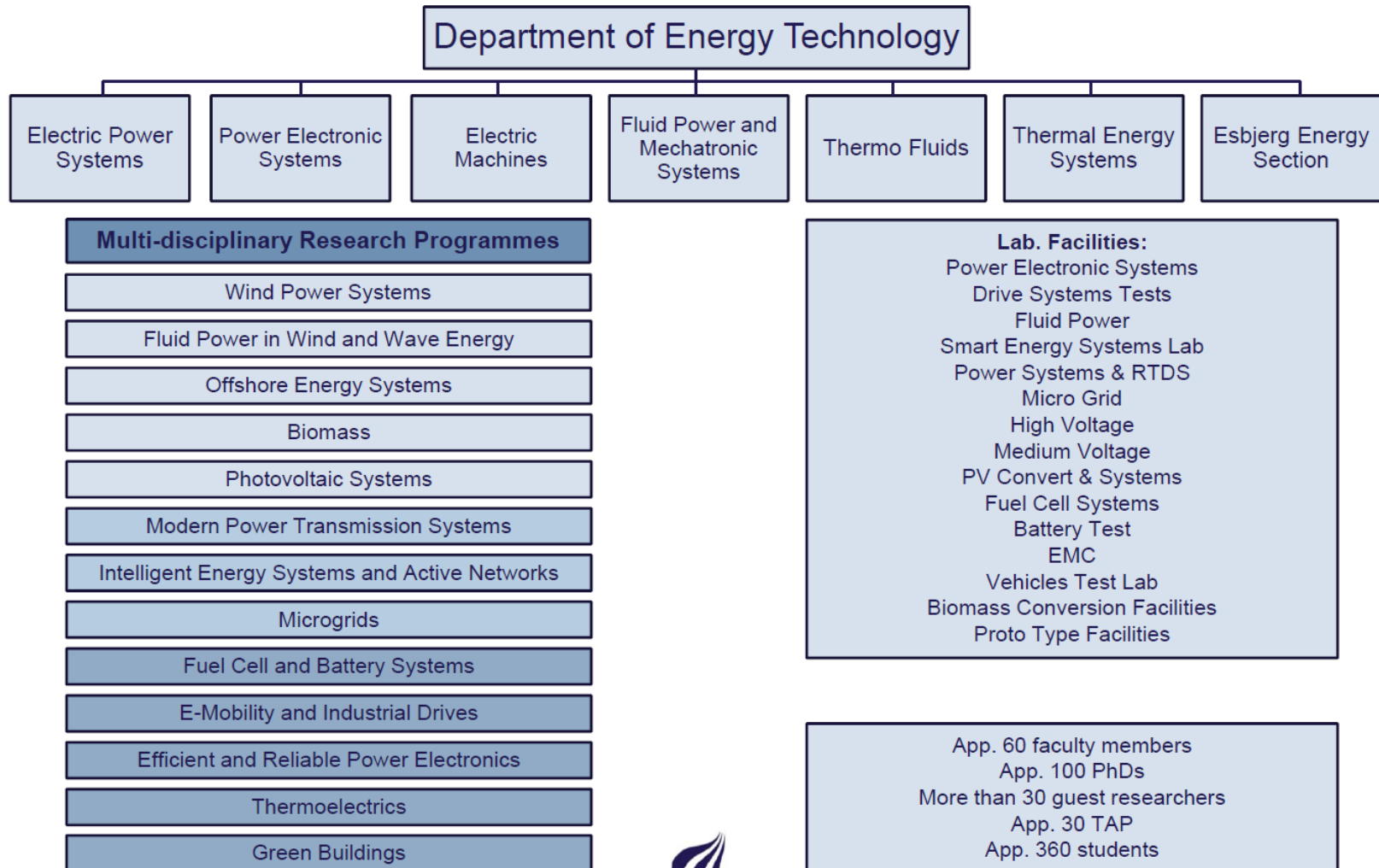


# INTERNATIONAL RANKING LISTS

- **US News World Ranking**  
no. 4 in the world within the field of engineering and best in Europe
- **Times Higher Education**  
no. 194 in the overall world university ranking  
no. 25 in the Top 100 of universities established within the past 50 years
- **Shanghai/ARWU World Ranking**  
no. 201-300 in the overall world university ranking  
no. 7 in the world within the field of Electronic and Electrical Eng
- **QS**  
no. 343 in the overall world university ranking  
no. 37 in the top 50 of universities established within the past 50 years.



# Department Organization





# Selected Cooperation Partners

(Here I would include also partners of the FC research group)



Thanks for your attention

