

LABORATORIO DI LICHENOLOGIA

Usare la seguente chiave:

**The lichens of the Classical Karst
(NE Italy-SW Slovenia): an interactive guide**

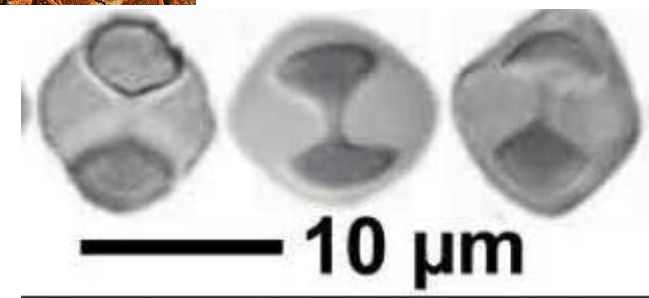
http://italic.units.it/flora/index.php?procedure=ext_key_home&key_id=51

Leggersi prima:

- 1) l'introduzione alle chiavi dei macrolicheni d'Italia
- 2) Il tutorial "Licheni in breve"
(entrambi disponibili su Moodle)

Inviare la lista con le determinazioni a nimis@units.it
PRIMA dell'esame

L1 – Crostoso su roccia, K+ rosso - Marginal lobes 1.5-3 mm wide, flat, closely adpressed.



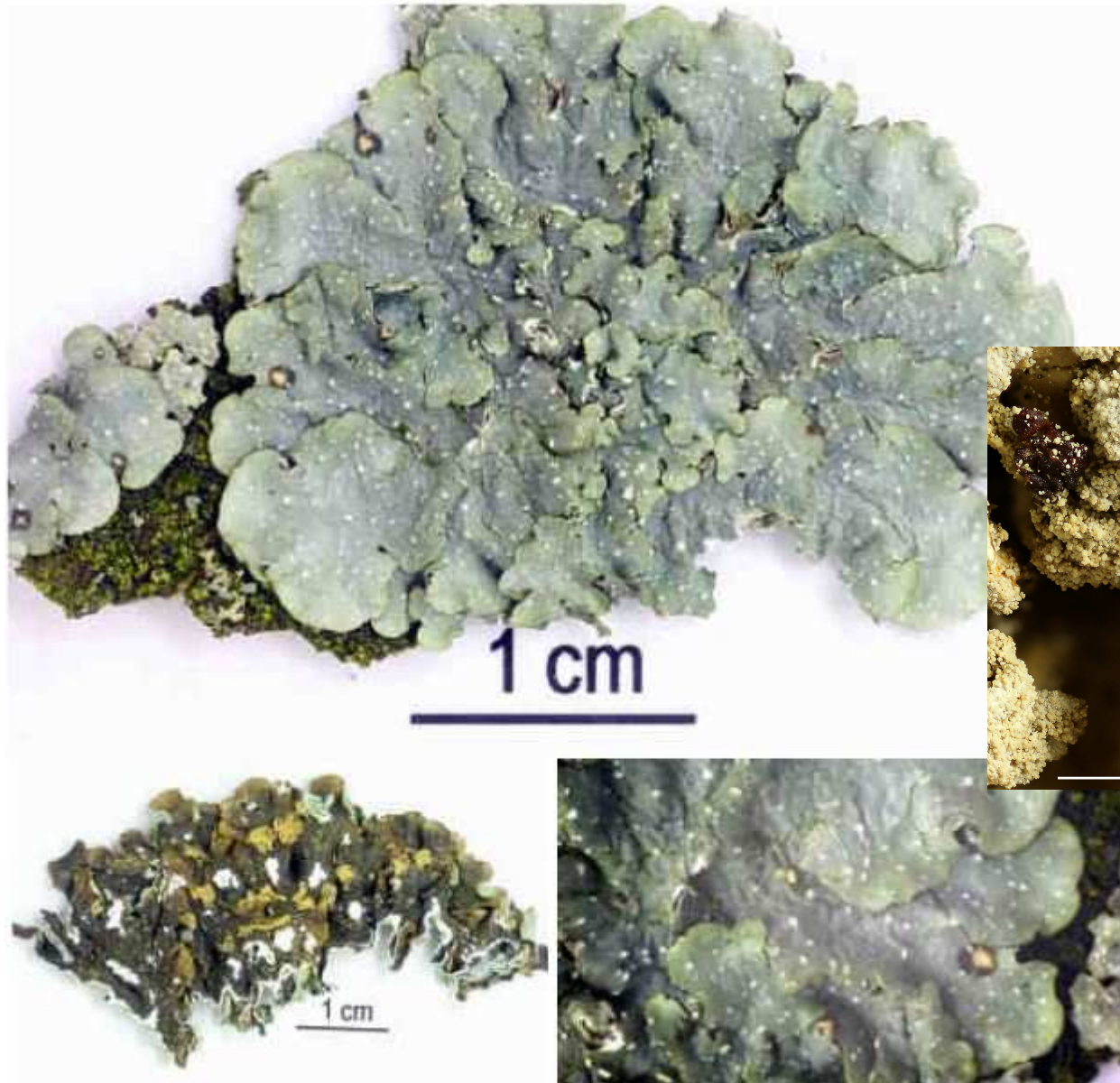
L2 –Su corteccia, tallo K+ giallo



L 3 – Su corteccia, tallo K-



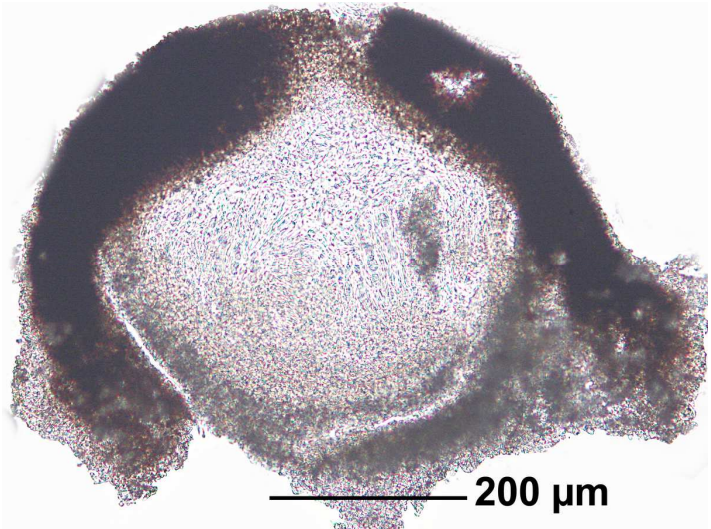
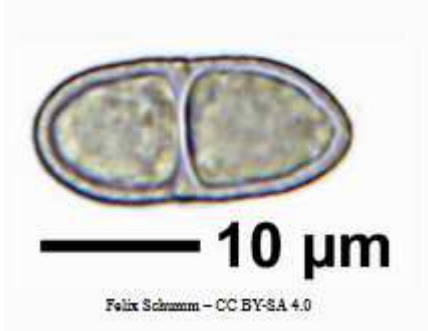
L4 – Su corteccia K+ giallo, faccia inferiore scura



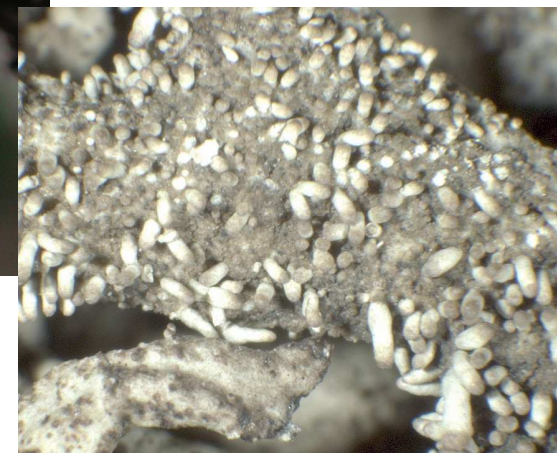
L5 – Su corteccia, tallo K-



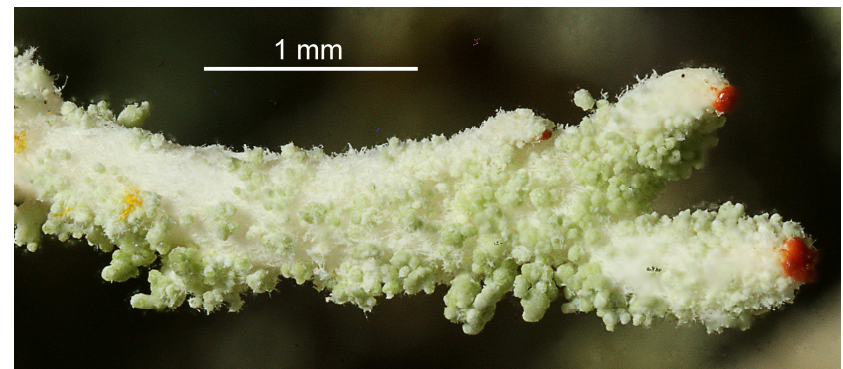
L6 – Tallo endolitico, con Trentepohlia



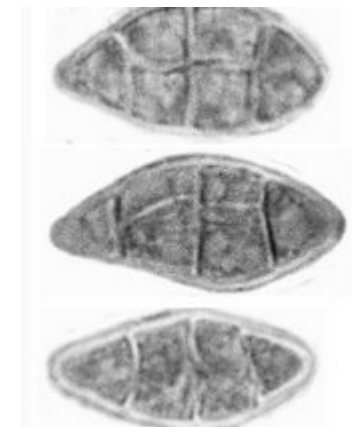
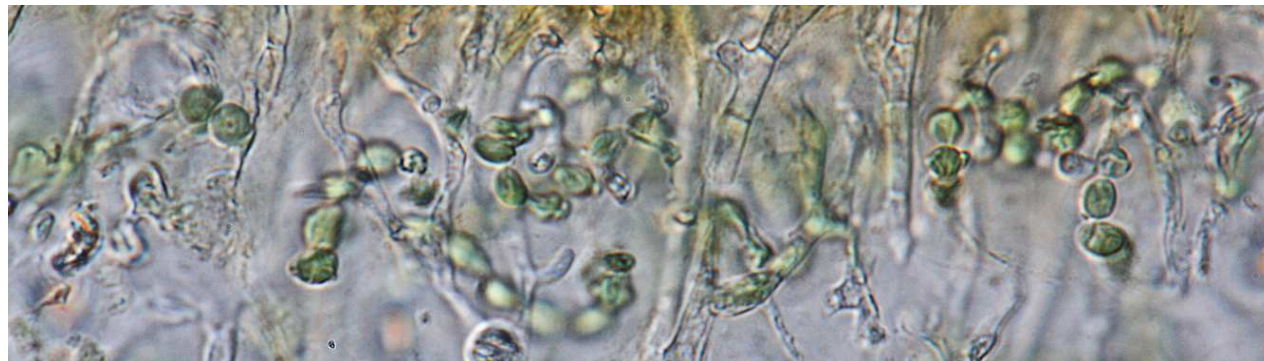
L7 - Su corteccia, tallo K+ giallo, medulla C-



L8 – su corteccia



L9 – Tallo omeomero, su roccia. Lobi scanalati



L10 – Su corteccia, alghe verdi, squamuloso

