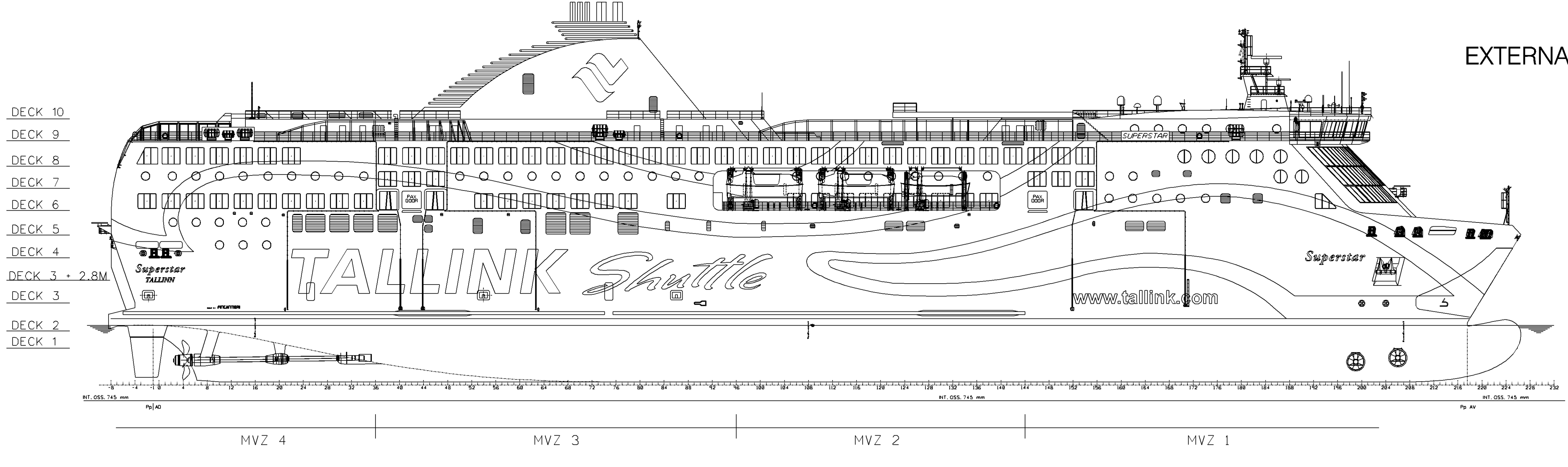
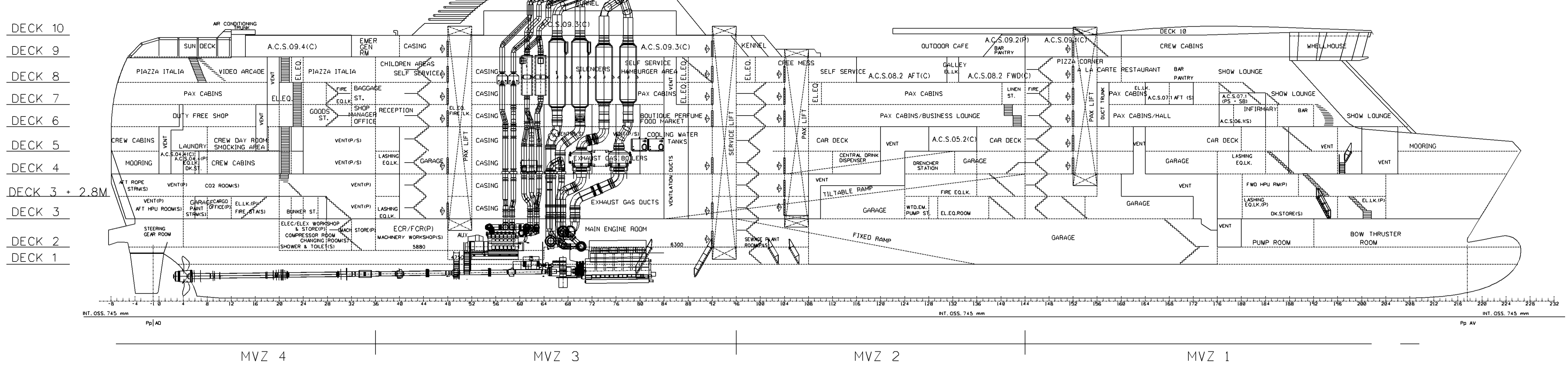


EXTERNAL VIEW

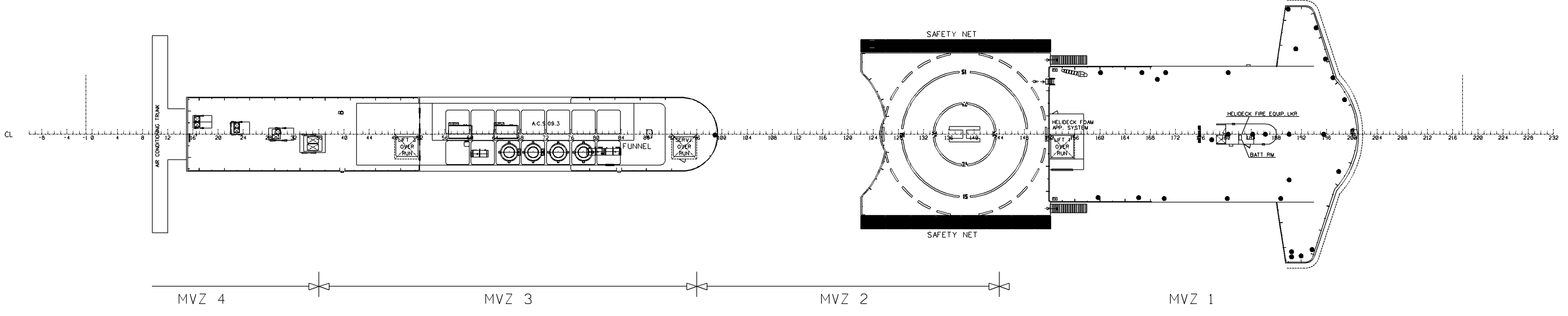


DECK 10
DECK 9
DECK 8
DECK 7
DECK 6
DECK 5
DECK 4
DECK 3 + 2.8M
DECK 2
DECK 1

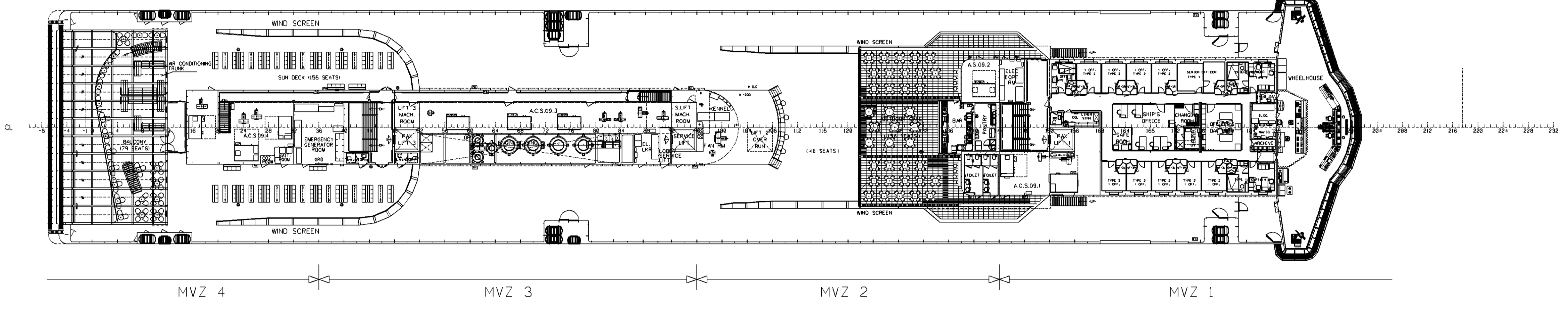
LONGITUDINAL VIEW



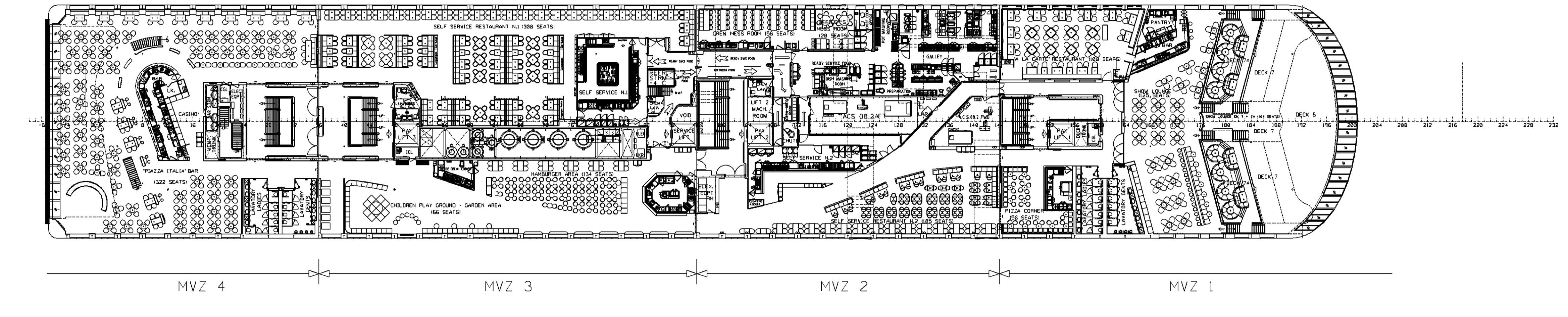
DECK 10
DECK 9
DECK 8
DECK 7
DECK 6
DECK 5
DECK 4
DECK 3 + 2.8M
DECK 2
DECK 1



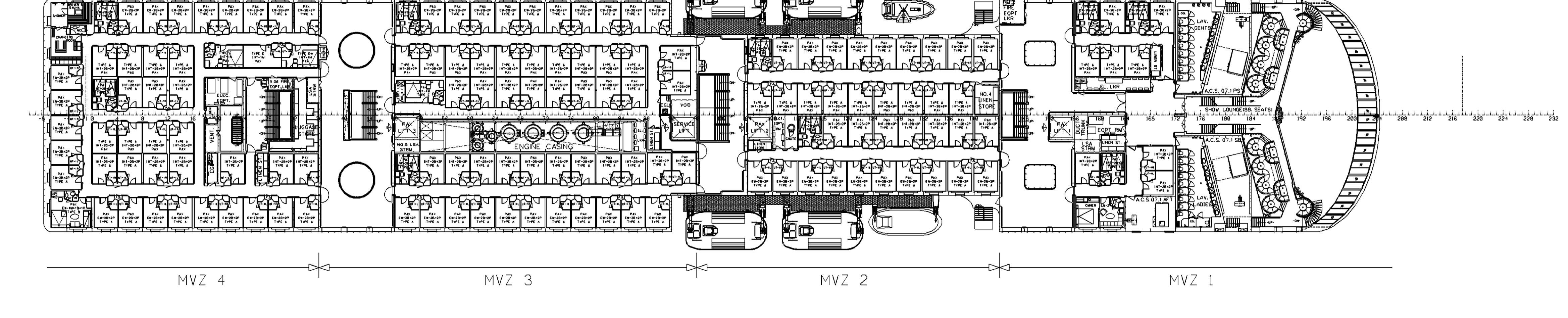
DECK 10
32600 from BL



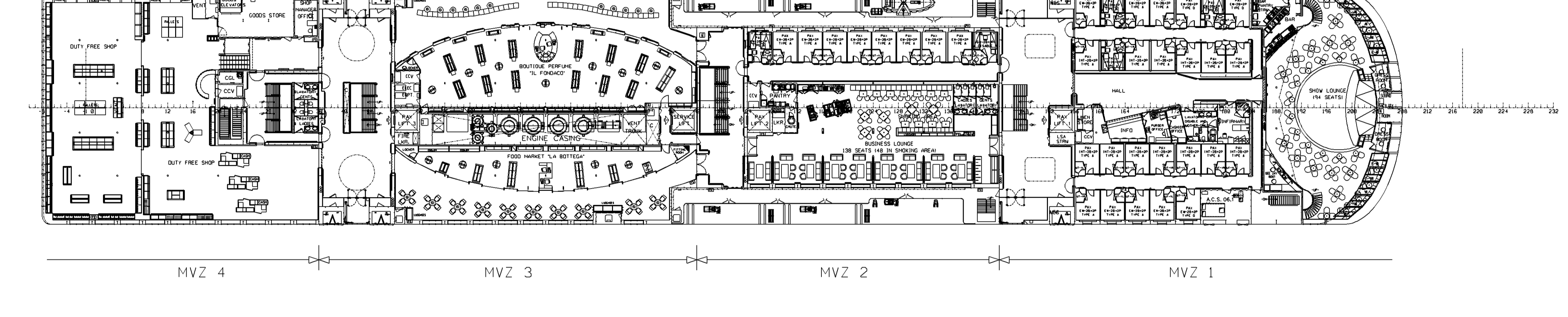
DECK 9
29500 from BL
1 CAPTAIN CABIN
1 CHEF ENGINEER CABIN
1 SENIOR OFFICER
10 OFFICER CABINS



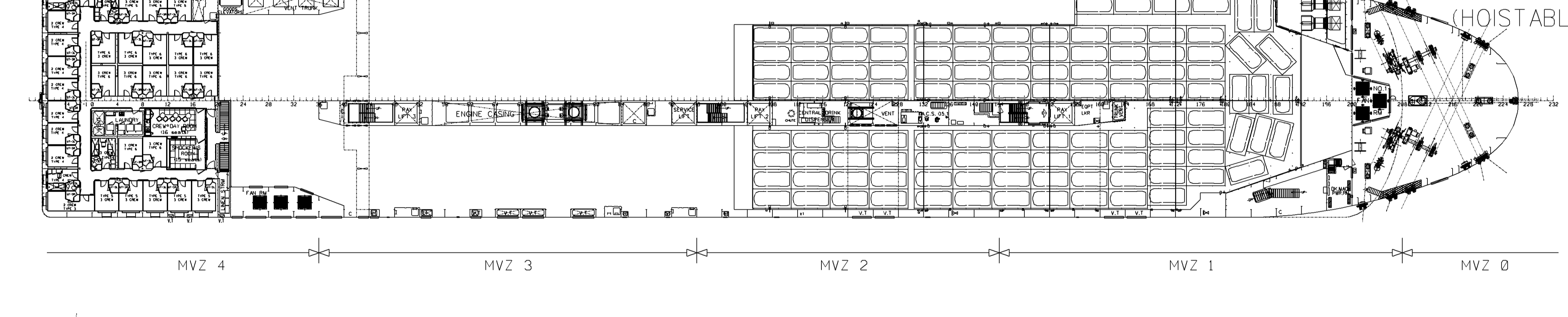
DECK 8
26750 from BL



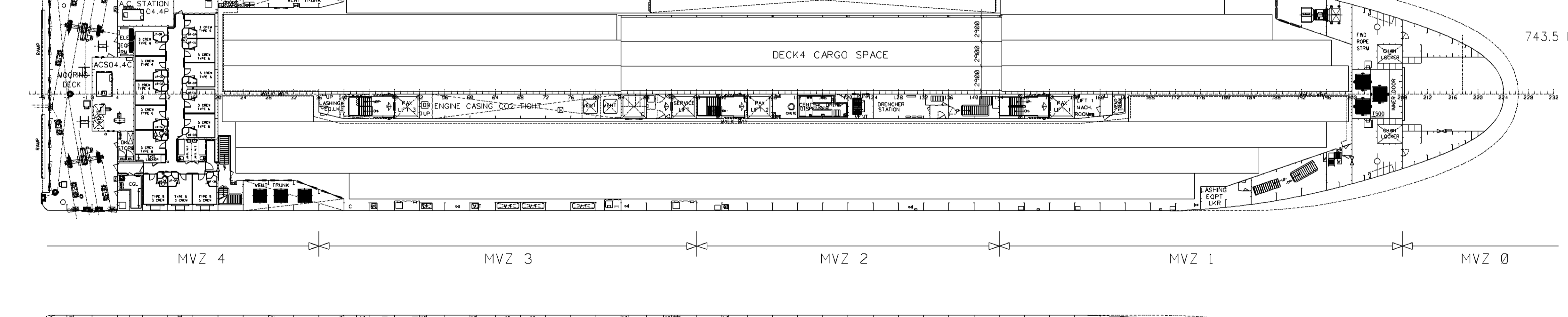
DECK 7
24000 from BL
147 PASSENGER CABINS
1 TOWER'S ROOM



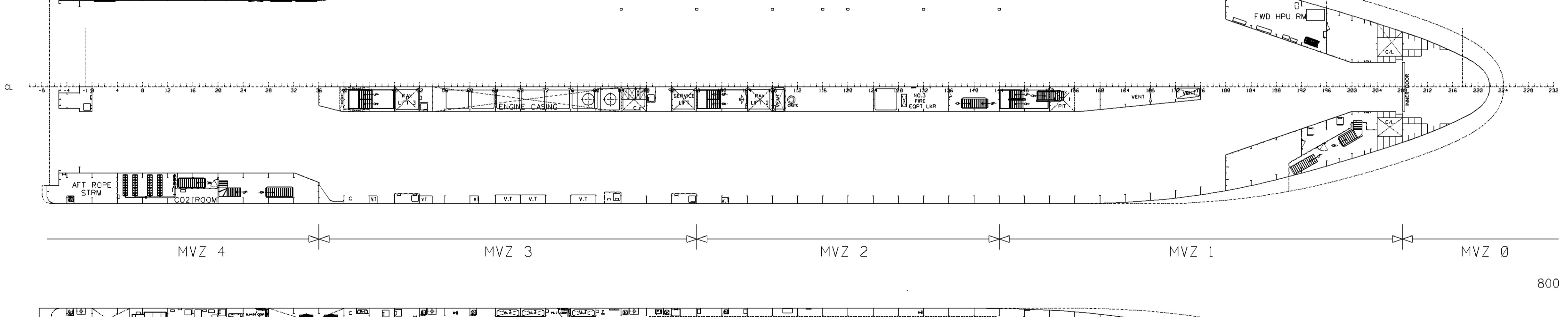
DECK 6
21250 from BL
39 PASSENGER CABINS



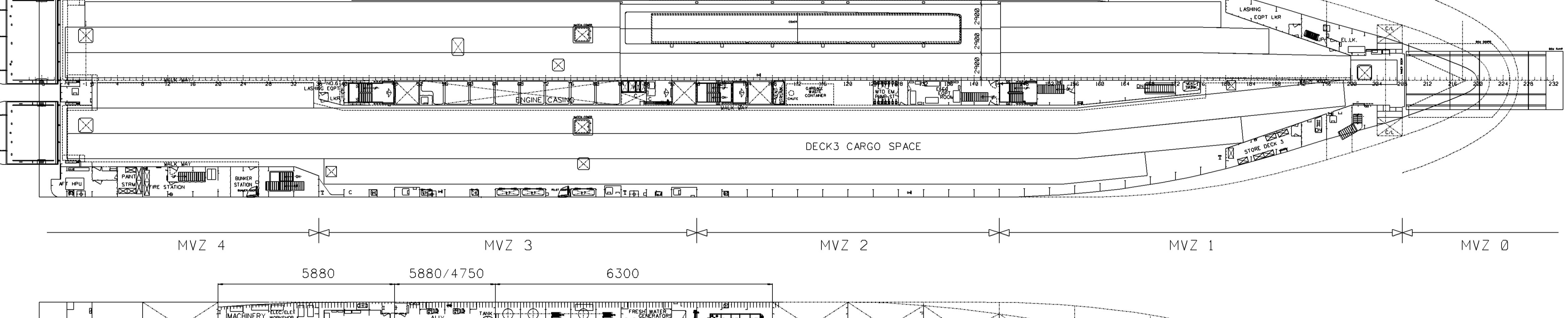
DECK 5
(HOISTABLE CAR PLATFORM)
18200 from BL
32 CREW CABINS
112 CAPS



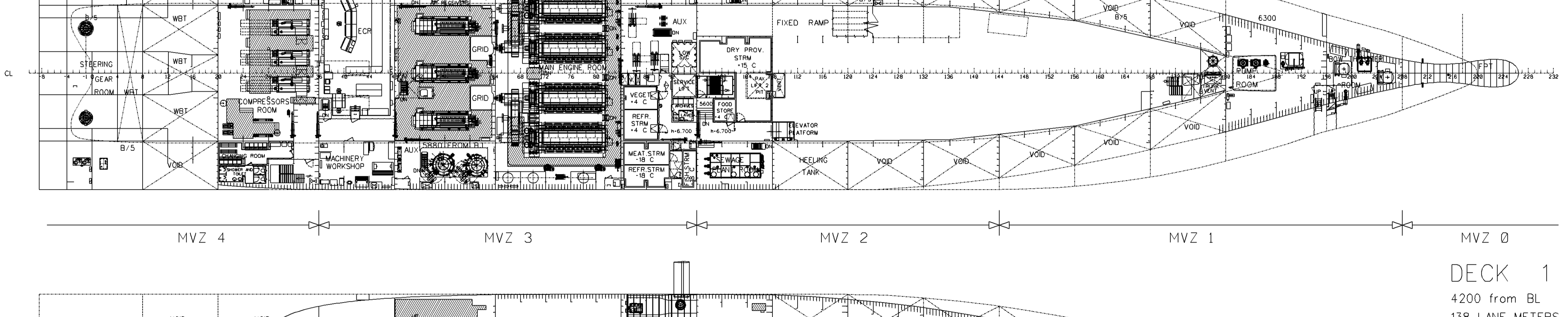
DECK 4
15400 from BL
13 CREW CABINS
743.5 LAINE METERS (3,00 m) / 235 CAPS
135 LAINE METERS (2,90 m)
878.5 TOTAL LAINE METERS



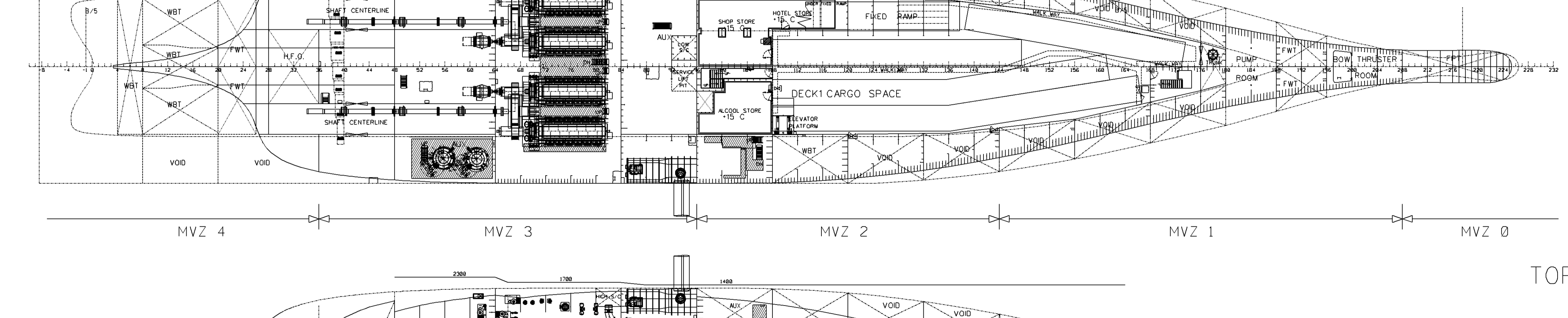
DECK 3 + 2.8M
12600 from BL



DECK 3
9800 from BL
800 LAINE METERS (3,00 m) / 263 CAPS
135 LAINE METERS (2,90 m)
935 TOTAL LAINE METERS



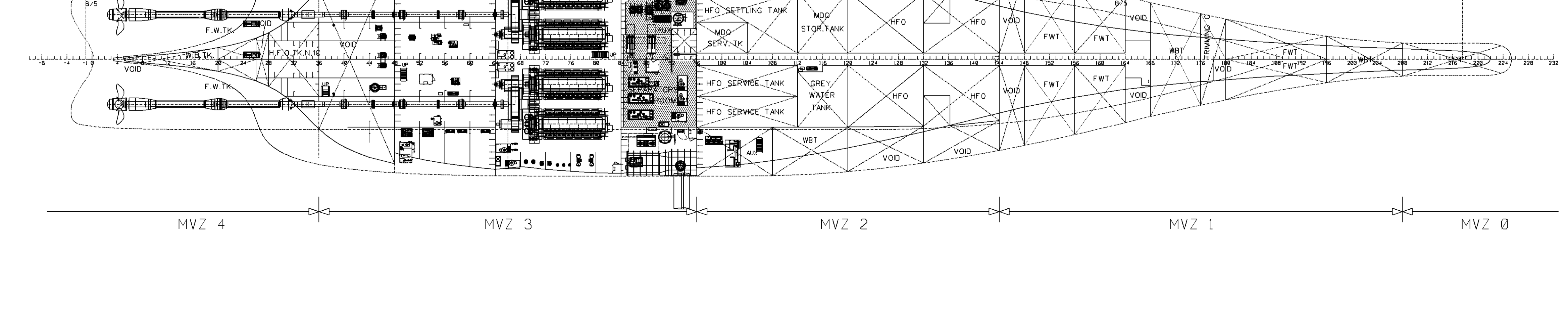
DECK 2
5600/6300 from BL



DECK 1
4200 from BL
138 LAINE METERS
48 CAPS

DECK 1
4200 from BL
138 LAINE METERS
48 CAPS

TOP DOUBLE BOTTOM



DATE	30 JUN 08	
SCALE	AS SHOWN	
PROJECT	ARRANGEMENT	
DESIGNER	FINCANTIERI	
CHECKER		
APPROVER		
REVISIONS		
NO.	DATE	DESCRIPTION
1	01.06.08	ISSUE FOR APPROVAL
2	02.06.08	ISSUE FOR CONSTRUCTION
3	03.06.08	ISSUE FOR CONSTRUCTION
4	04.06.08	ISSUE FOR CONSTRUCTION
5	05.06.08	ISSUE FOR CONSTRUCTION
6	06.06.08	ISSUE FOR CONSTRUCTION
7	07.06.08	ISSUE FOR CONSTRUCTION
8	08.06.08	ISSUE FOR CONSTRUCTION
9	09.06.08	ISSUE FOR CONSTRUCTION
10	10.06.08	ISSUE FOR CONSTRUCTION
11	11.06.08	ISSUE FOR CONSTRUCTION
12	12.06.08	ISSUE FOR CONSTRUCTION
13	13.06.08	ISSUE FOR CONSTRUCTION
14	14.06.08	ISSUE FOR CONSTRUCTION
15	15.06.08	ISSUE FOR CONSTRUCTION
16	16.06.08	ISSUE FOR CONSTRUCTION
17	17.06.08	ISSUE FOR CONSTRUCTION
18	18.06.08	ISSUE FOR CONSTRUCTION
19	19.06.08	ISSUE FOR CONSTRUCTION
20	20.06.08	ISSUE FOR CONSTRUCTION
21	21.06.08	ISSUE FOR CONSTRUCTION
22	22.06.08	ISSUE FOR CONSTRUCTION
23	23.06.08	ISSUE FOR CONSTRUCTION
24	24.06.08	ISSUE FOR CONSTRUCTION
25	25.06.08	ISSUE FOR CONSTRUCTION
26	26.06.08	ISSUE FOR CONSTRUCTION
27	27.06.08	ISSUE FOR CONSTRUCTION
28	28.06.08	ISSUE FOR CONSTRUCTION
29	29.06.08	ISSUE FOR CONSTRUCTION
30	30.06.08	ISSUE FOR CONSTRUCTION

GENERAL ARRANGEMENT

