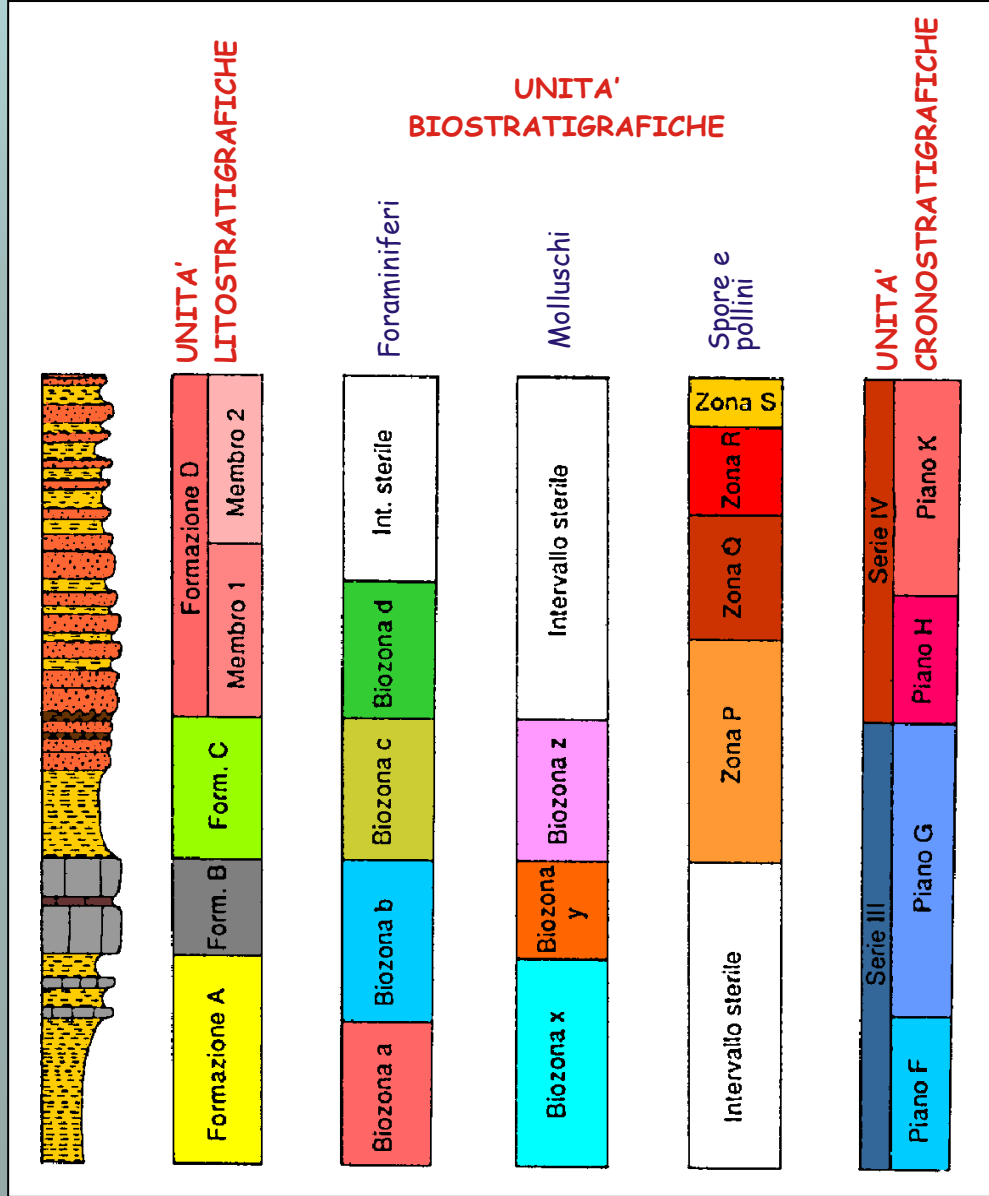
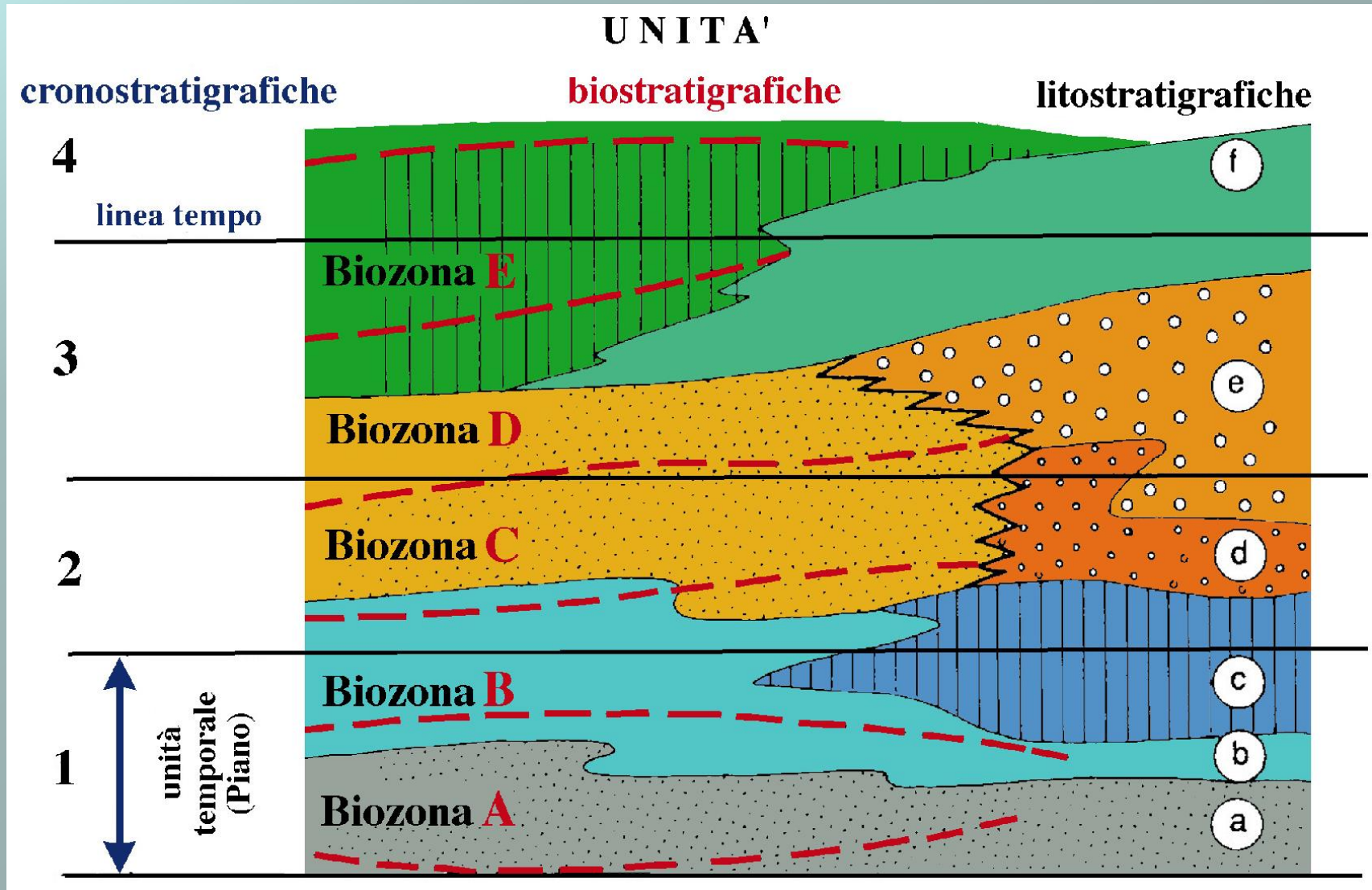


Rapporti tra unità stratigrafiche ed esempi di applicazioni

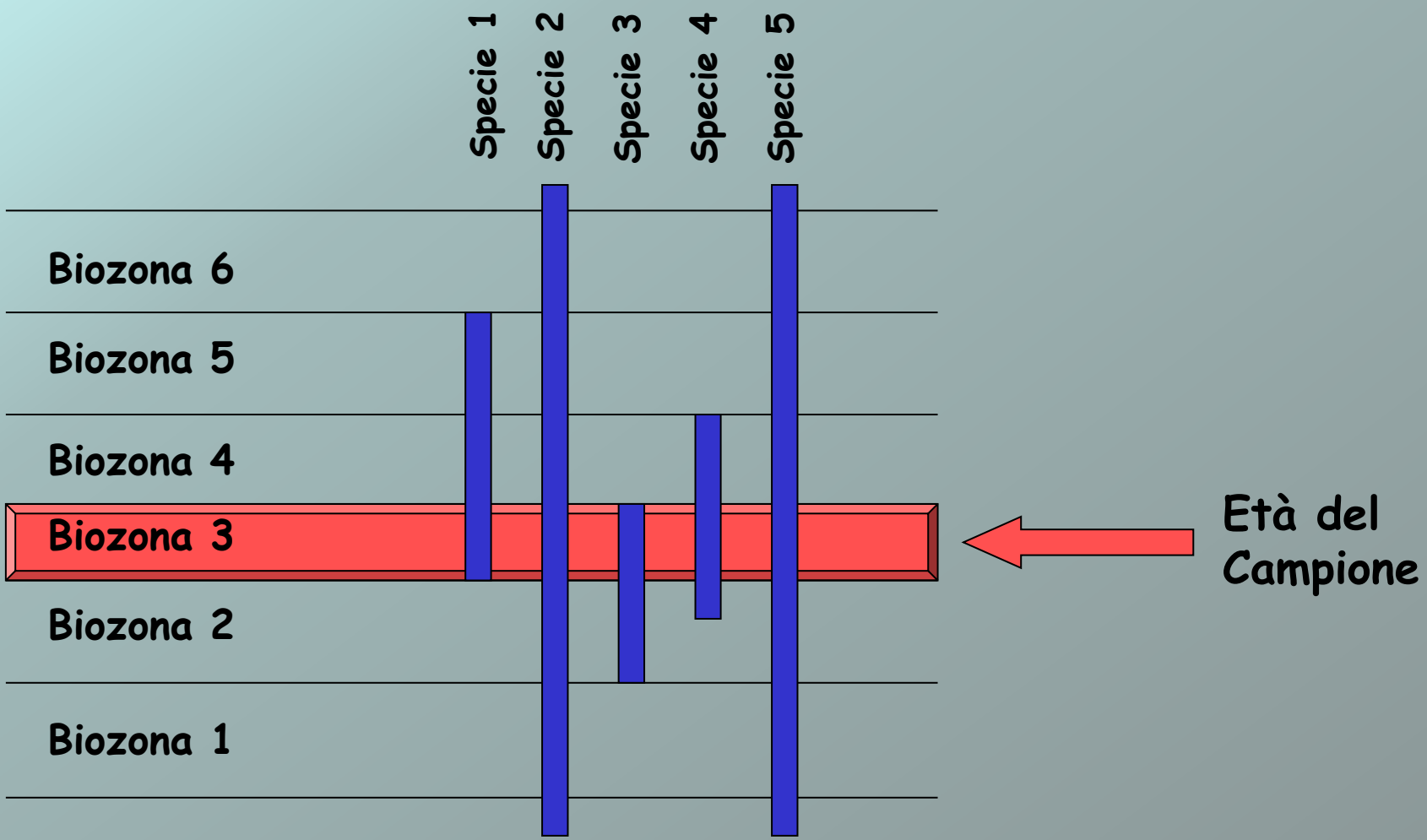
Rapporti tra unità stratigrafiche



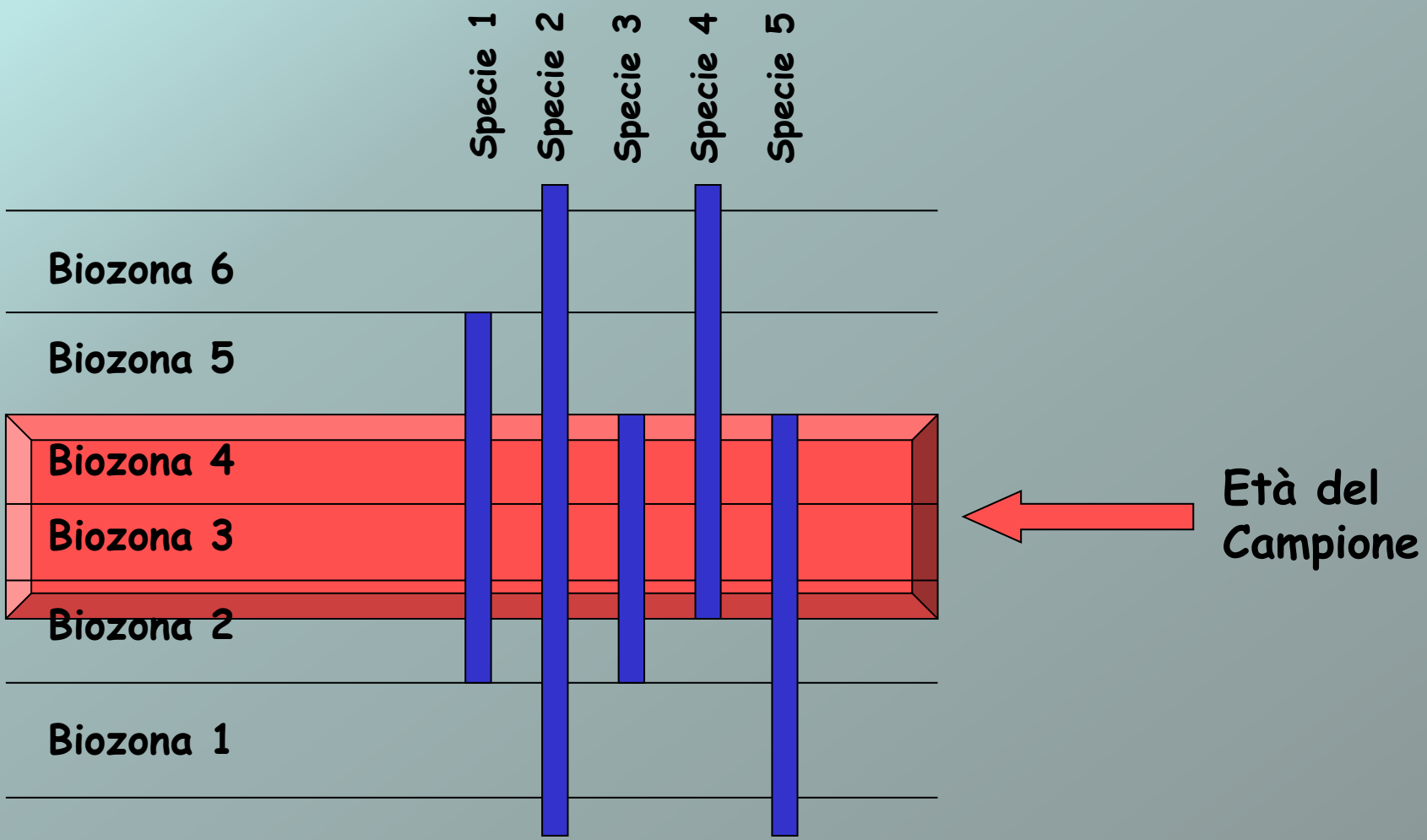
Rapporti tra unità stratigrafiche



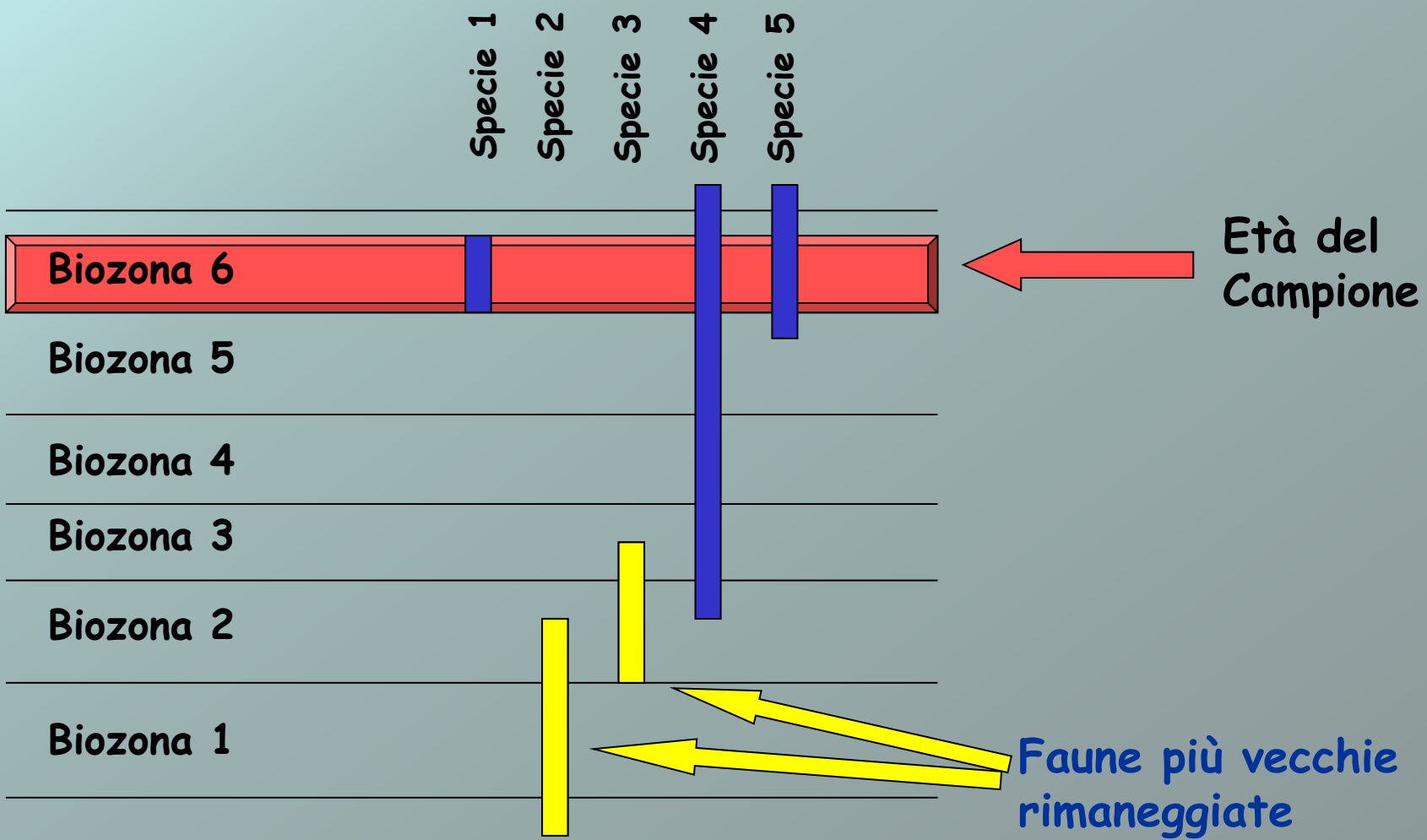
Datazione di un campione



Datazione di un campione



Datazione di un campione



Datazione di sezioni in base alla presenza di fossili

3 sezioni

nella stessa unità litostratigrafica
informale:

«**Ockerkalk**» della Sardegna SE

Litologia: calcari nodulari ocracei

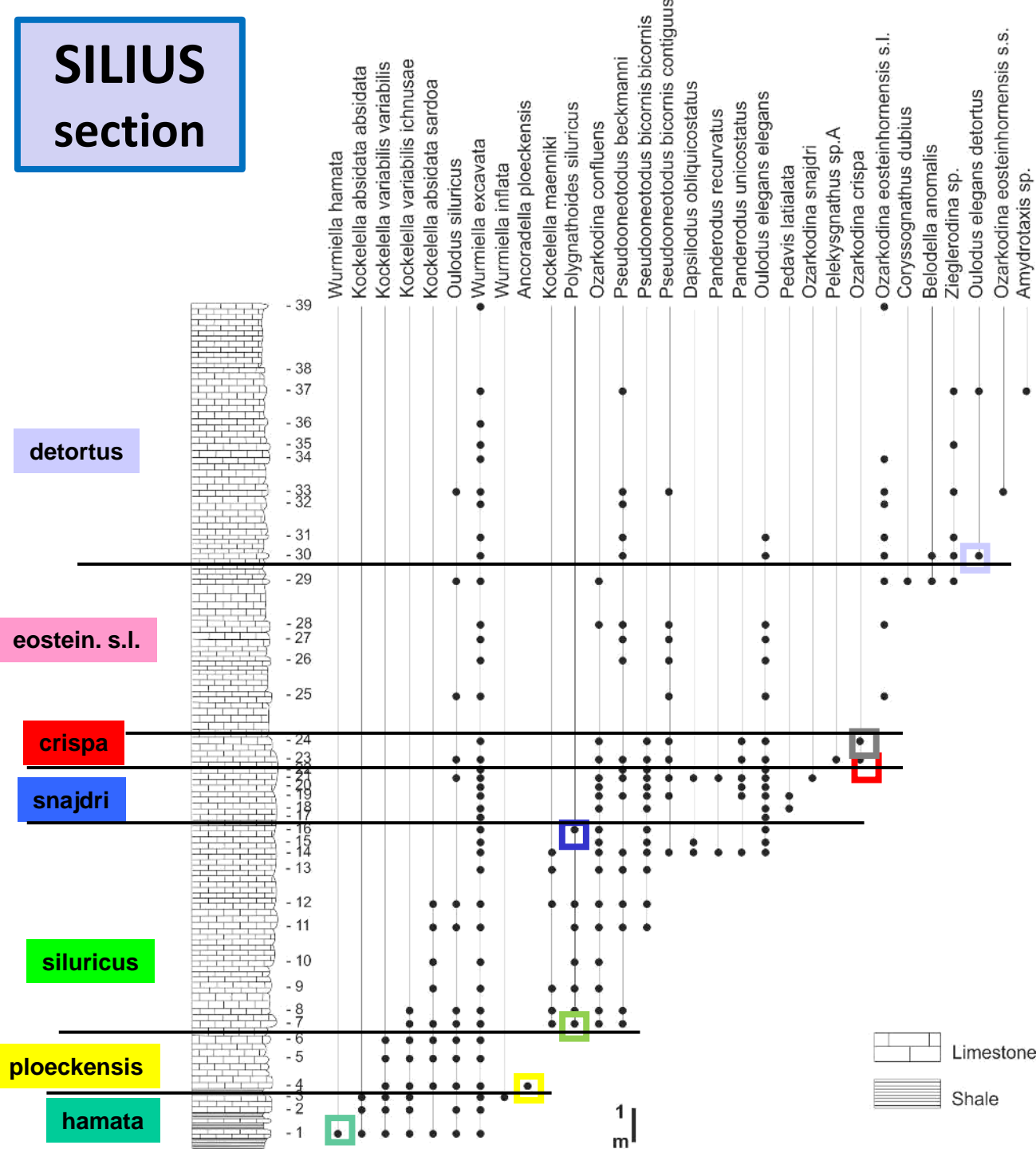
Fossili: conodonti

Età: Siluriano



SILIUS section

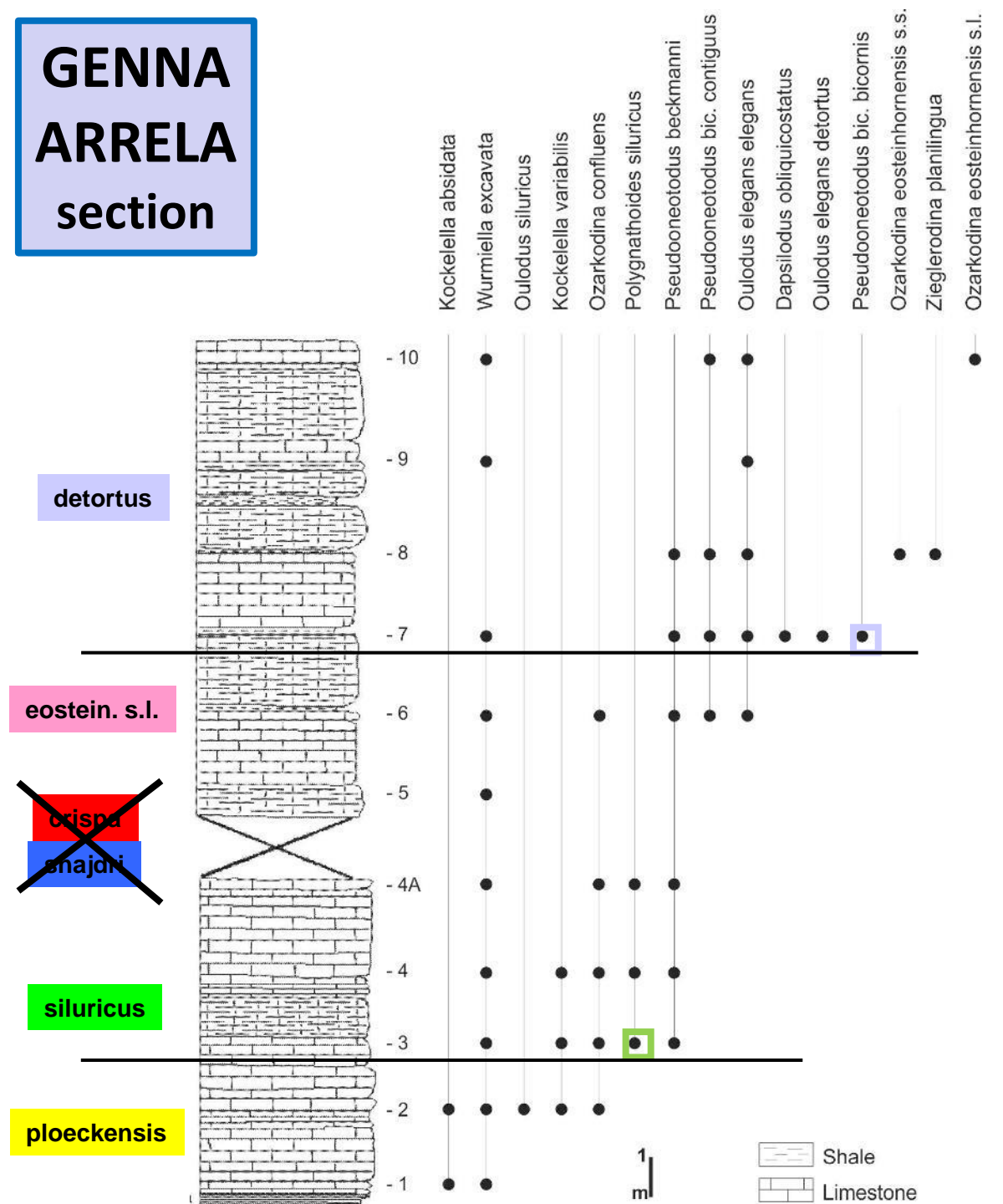
Esercizi di biostratigrafia



hesperius	FAD Icr. hesperius
el. detortus	FAD Oul. el. detortus
eosteinhornensis interval Zone	LAD Oz. crispa
crispa	FAD Oz. crispa
snajdri interval Zone	LAD P. siluricus
siluricus	FAD P. siluricus
ploeckensis	FAD A. ploeckensis
hamata	FAD W. hamata
v. variabilis i.Z.	LAD K. crassa
crassa	FAD K. crassa
bohémica	FAD Oz. bohémica
sagitta sagitta	FAD Oz. sagitta sagitta
sagitta rhenana	FAD Oz. sagitta rhenana
ranuliformis	FAD K. ranuliformis
amorphognath.	FAD Pt. amorphognathoides

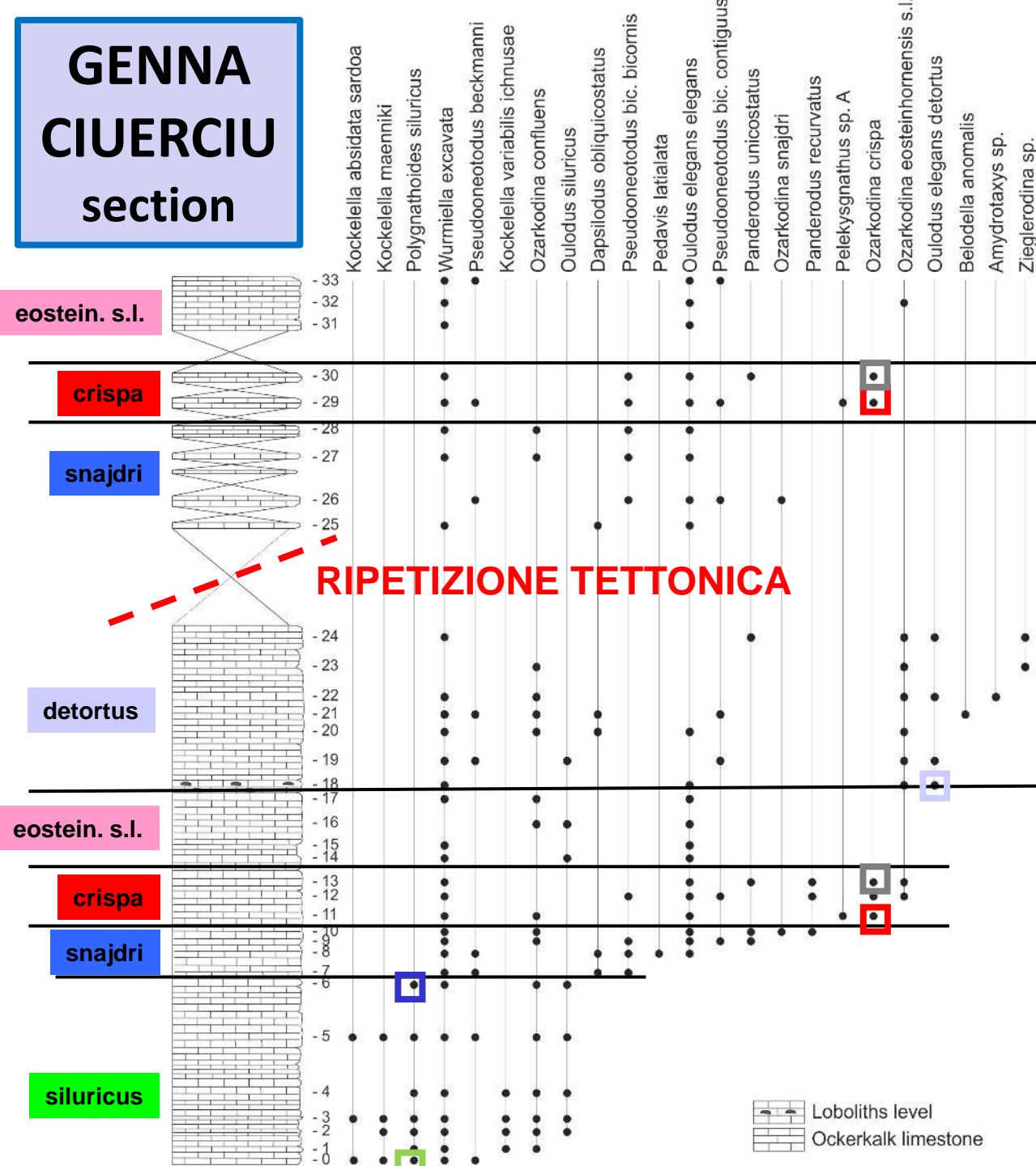
GENNA ARRELA section

Esercizi di biostratigrafia



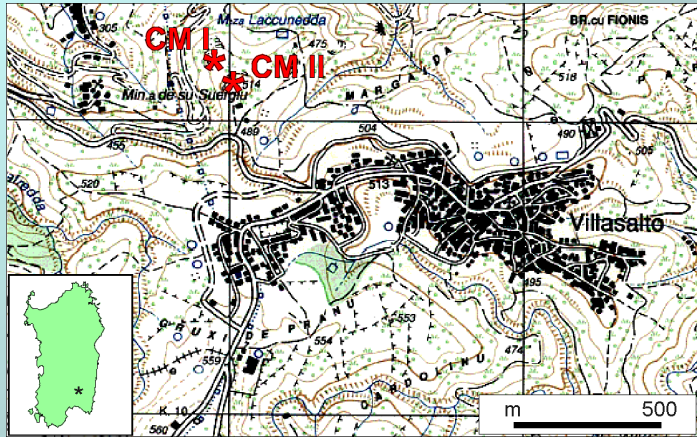
hesperius	FAD Icr. hesperius
el. detortus	FAD Oul. el. detortus
eosteinhornensis interval Zone	LAD Oz. crispa
crispa	FAD Oz. crispa
snajdri interval Zone	LAD P. siluricus
siluricus	FAD P. siluricus
ploeckensis	FAD A. ploeckensis
hamata	FAD W. hamata
v. variabilis i.Z.	LAD K. crassa
crassa	FAD K. crassa
bohemica	FAD Oz. bohemica
sagitta sagitta	FAD Oz. sagitta sagitta
sagitta rhenana	FAD Oz. sagitta rhenana
ranuliformis	FAD K. ranuliformis
amorphognath.	FAD Pt. amorphognathoides

GENNA CIUERCIU section



Esercizi di biostratigrafia

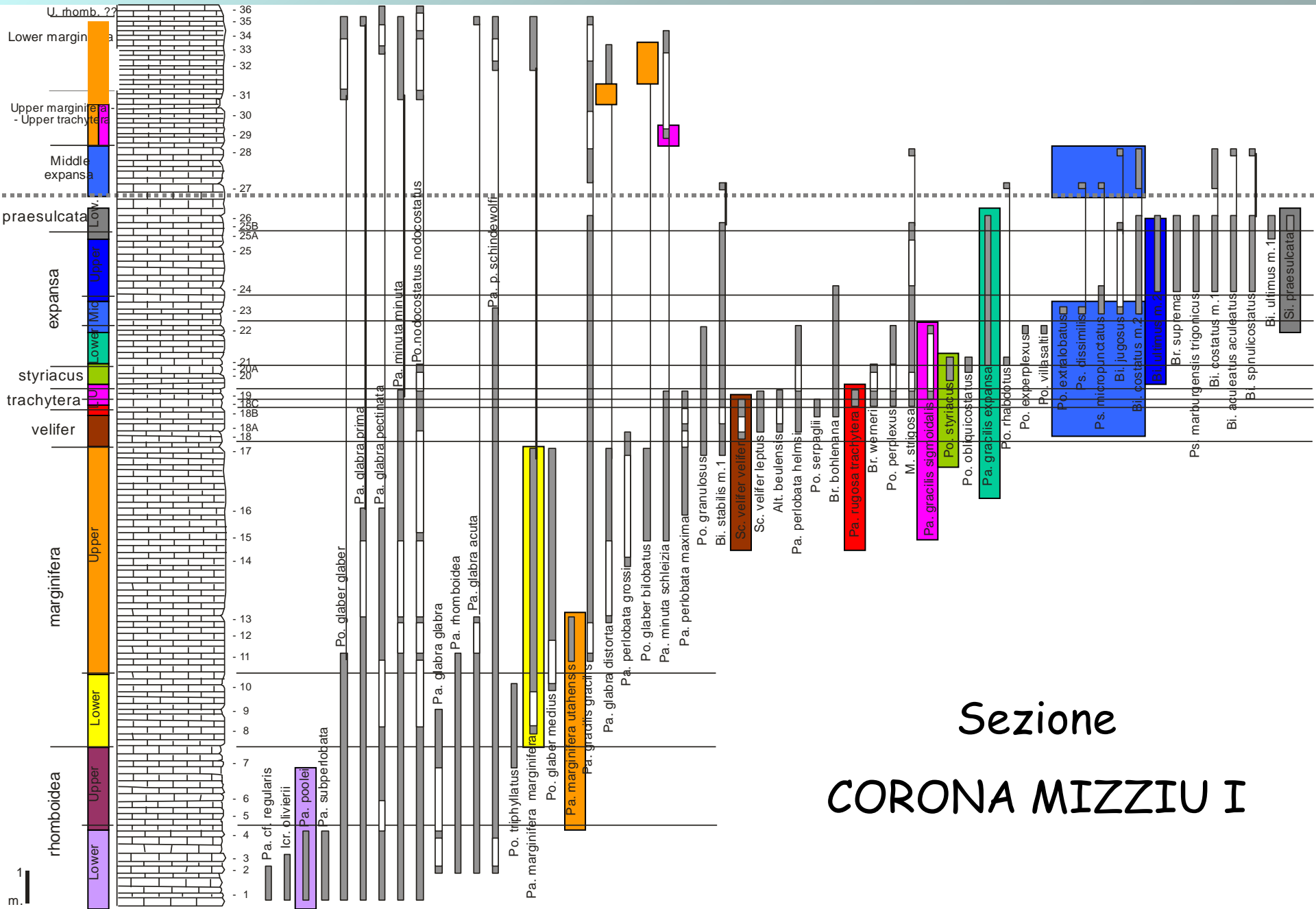
hesperius	FAD Icr. hesperius
el. detortus	FAD Oul. el. detortus
eosteinhornensis interval Zone	LAD Oz. crispa
crispa	FAD Oz. crispa
snajdri interval Zone	LAD P. siluricus
siluricus	FAD P. siluricus
ploeckensis	FAD A. ploeckensis
hamata	FAD W. hamata
v. variabilis i.Z.	LAD K. crassa
crassa	FAD K. crassa
bohémica	FAD Oz. bohémica
sagitta sagitta	FAD Oz. sagitta sagitta
sagitta rhenana	FAD Oz. sagitta rhenana
ranuliformis	FAD K. ranuliformis
amorphognath.	FAD Pt. amorphognathoides



Sezioni

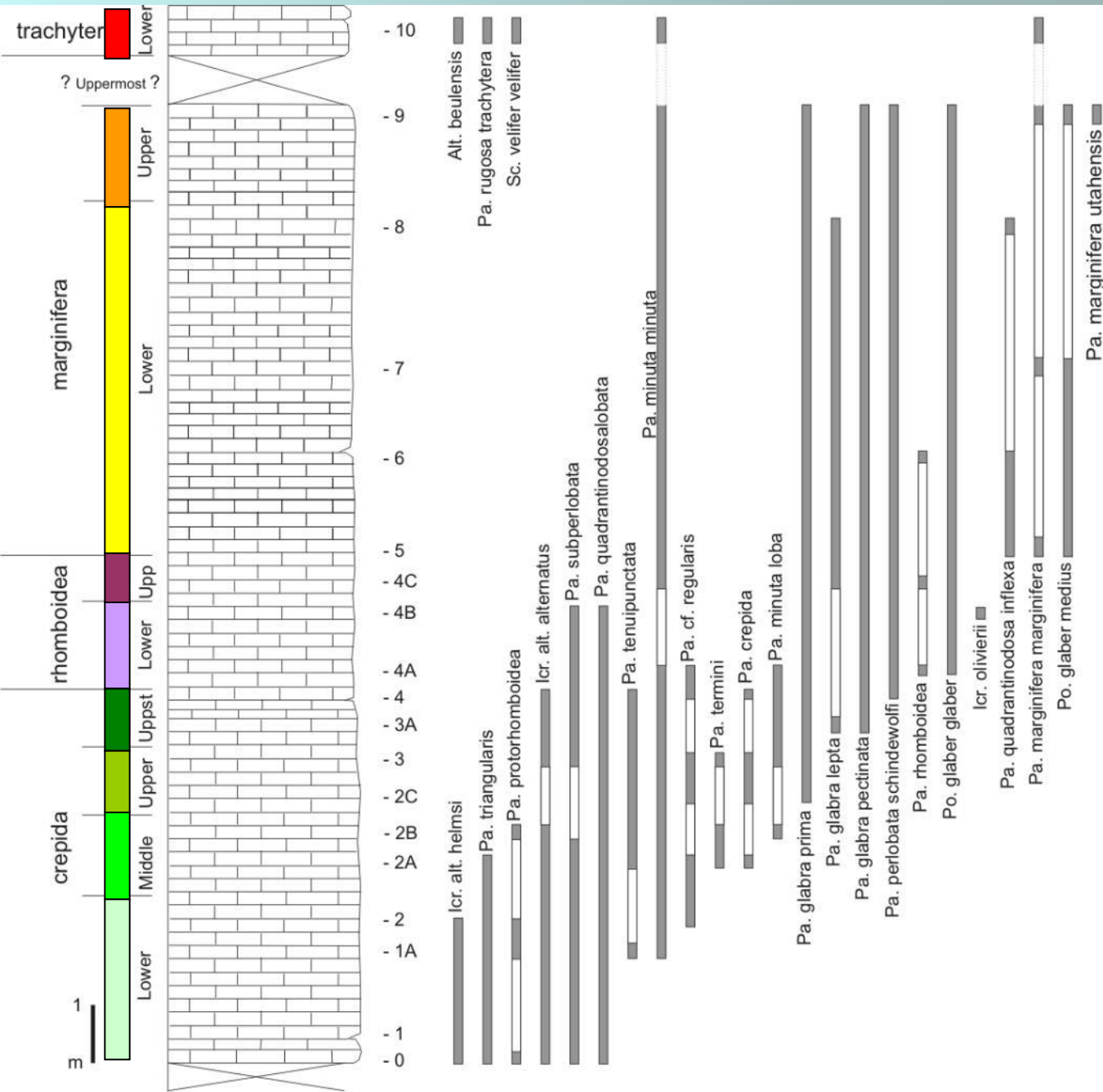
CORONA MIZZIU I
CORONA MIZZIU II





Sezione
CORONA MIZZIU I

1 m



Sezione
CORONA
MIZZIU I

Sezioni

CORONA MIZZIU I
CORONA MIZZIU II

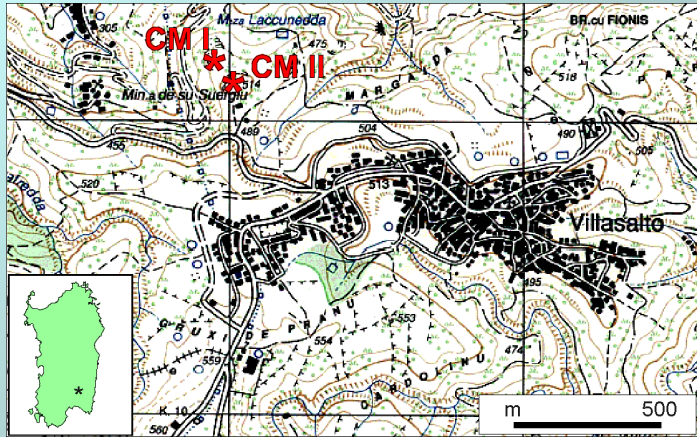
	STANDARD CONODONT ZONES <small>(Ziegler & Sandberg, 1990; Sandberg et al., 1978)</small>	SARDINIAN CONODONT ZONES
Tournaisian (L. Carb.)	Late duplicata	Upper duplicata
	Early duplicata	Lower duplicata
	sulcata	
Famennian (Upper Devonian)	Late presulcata	
	Middle presulcata	Lower presulcata
	Early presulcata	
	Late expansa	Upper expansa
	Middle expansa	Middle expansa
	Early expansa	Lower expansa
	Late postera	styriacus
	Early postera	
	Late trachytera	Upper trachytera
	Early trachytera	Lower trachytera
	Latest marginifera	velifer
	Late marginifera	Upper marginifera
	Early marginifera	Lower marginifera
	Late rhomboidea	Upper rhomboidea
	Early rhomboidea	Lower rhomboidea
	Latest crepida	Uppermost crepida
	Late crepida	Upper crepida
	Middle crepida	Middle crepida
	Early crepida	Lower crepida
	Late triangularis	Upper triangularis

CM I



CM II





Sezioni

CORONA MIZZIU I
CORONA MIZZIU II



Datazione di sezioni in base alla presenza di fossili

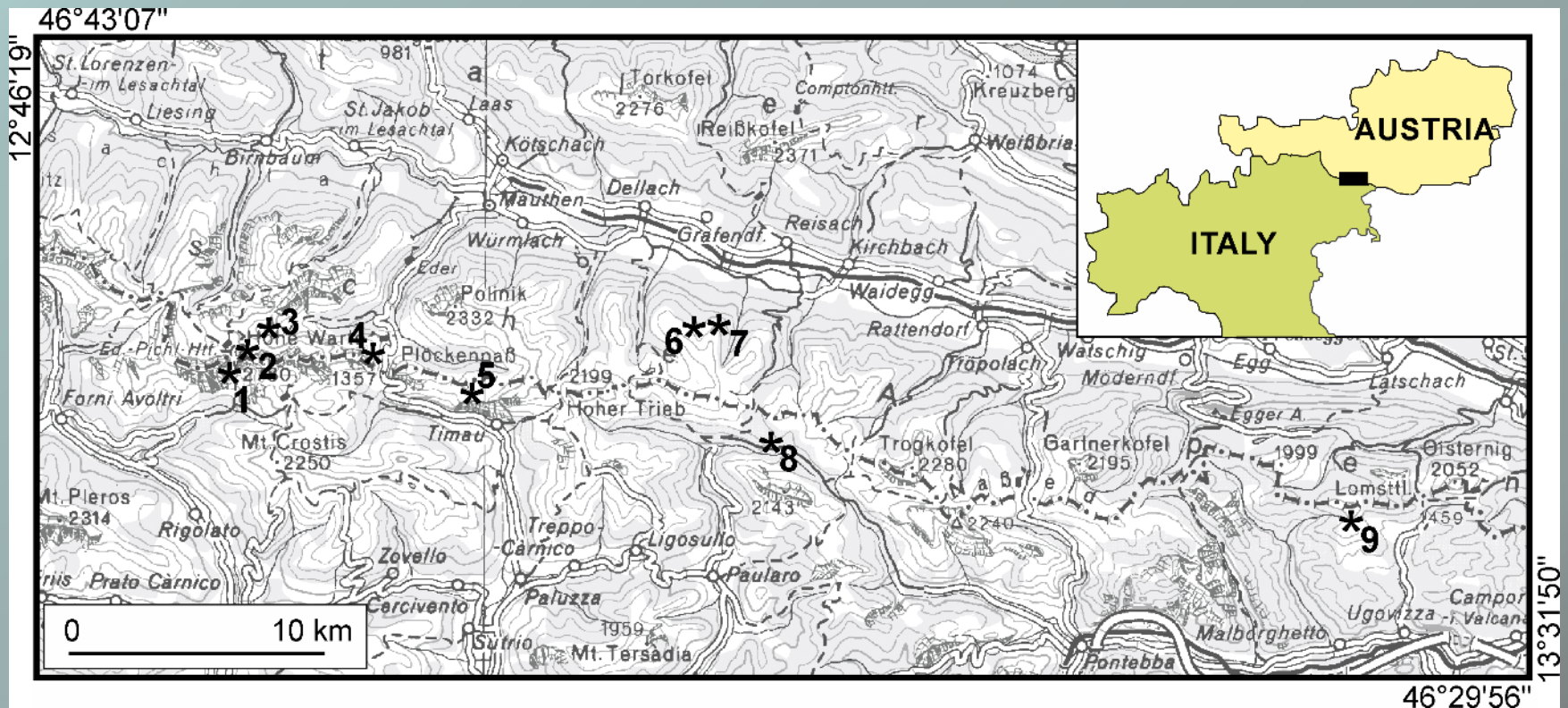
LIMITE SILURIANO/DEVONIANO nelle ALPI CARNICHE

9 sezioni (limite esposto 10 volte)

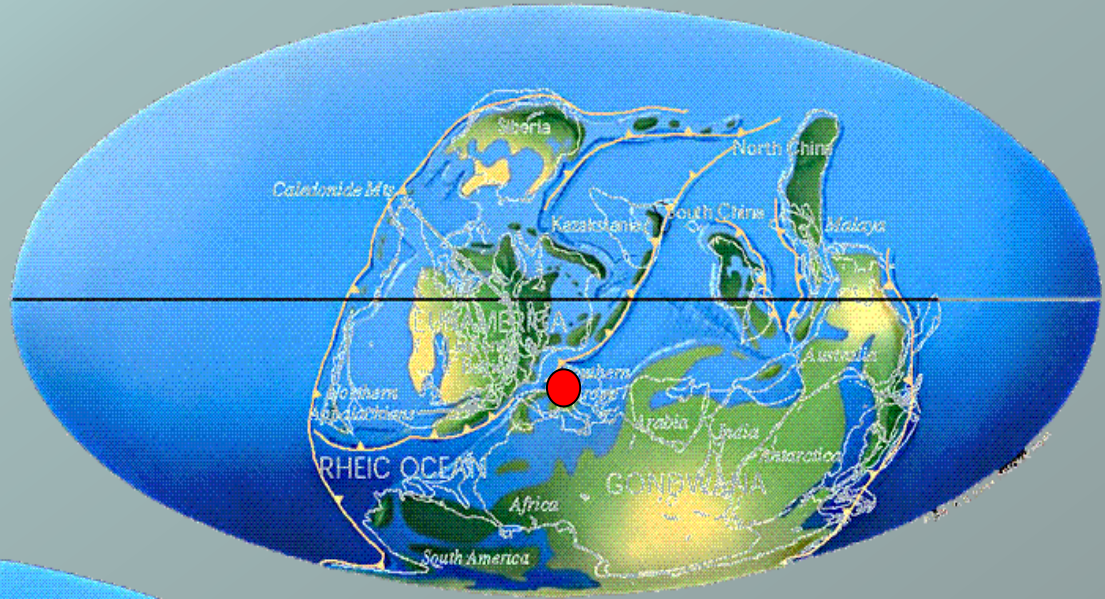
CORRADINI C., CORRIGA M.G., PONDRELLI M. & SUTTNER T.J.,
2019.

Conodonts across the Silurian/Devonian boundary in
the Carnic Alps (Austria and Italy).

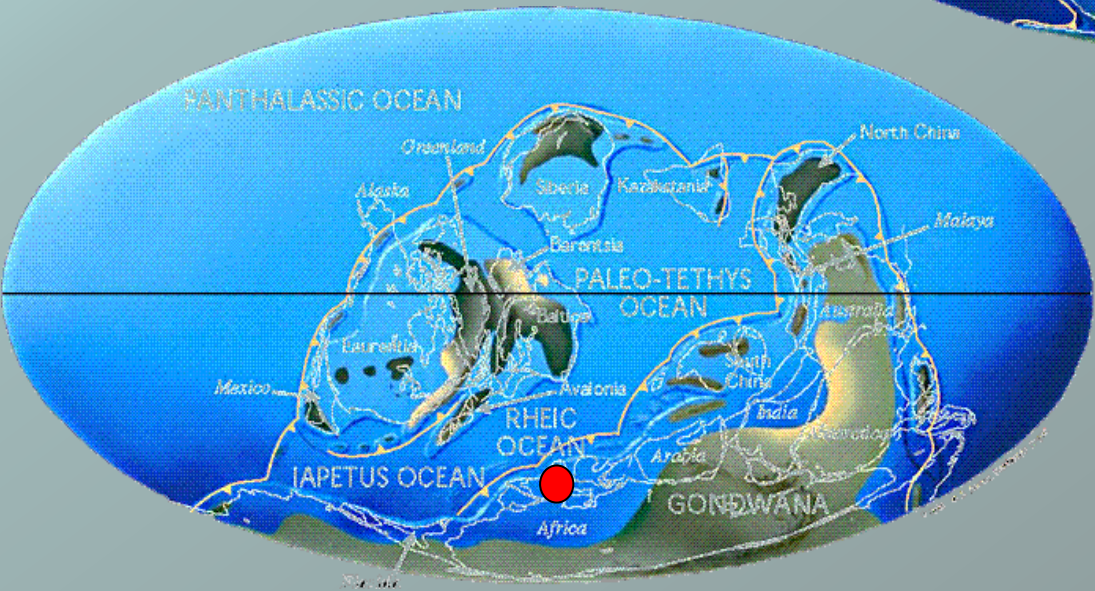
Palaeogeography, Palaeoclimatology, Palaeoecology,
549, 109097, doi: 10.1016/j.palaeo.2019.02.023



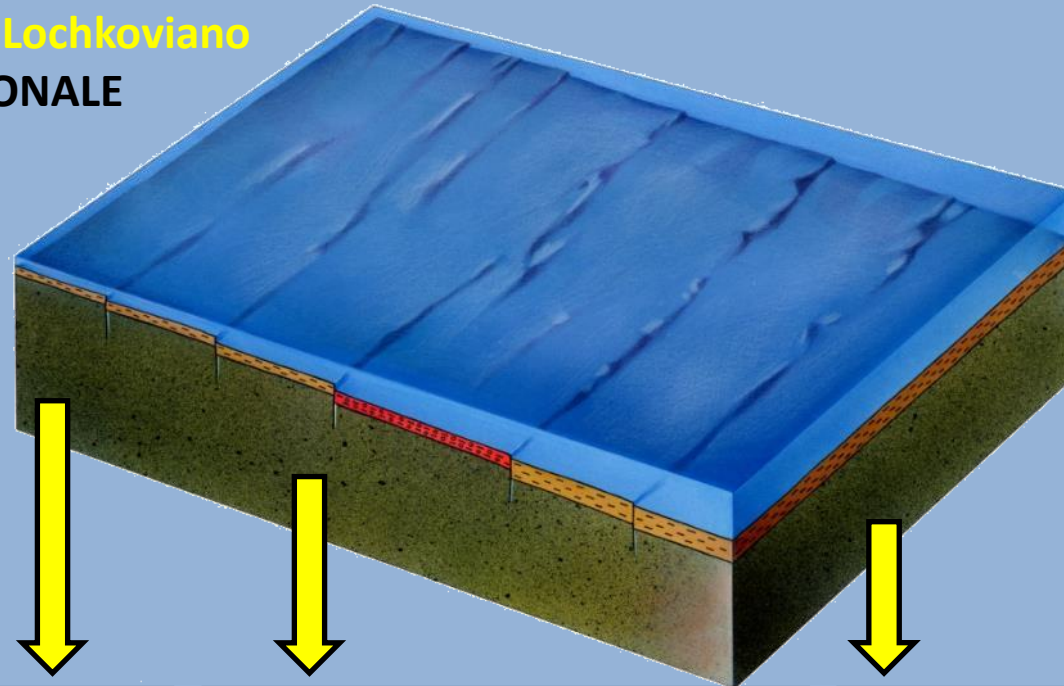
390 Ma – Lower Devonian



425 Ma - Silurian



Siluriano superiore – Lochkoviano
AMBIENTE DEPOSIZIONALE



Shallow water grain-/packstones



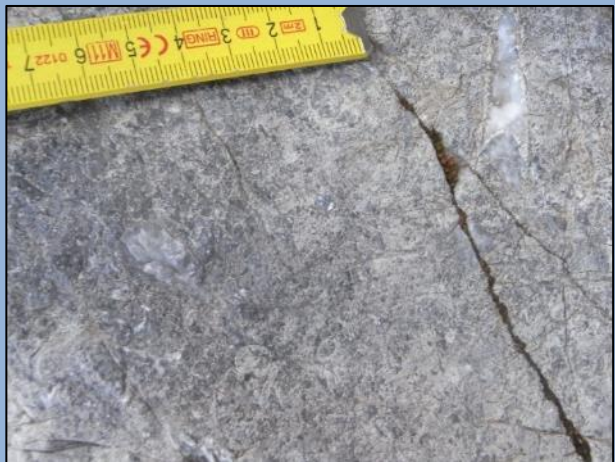
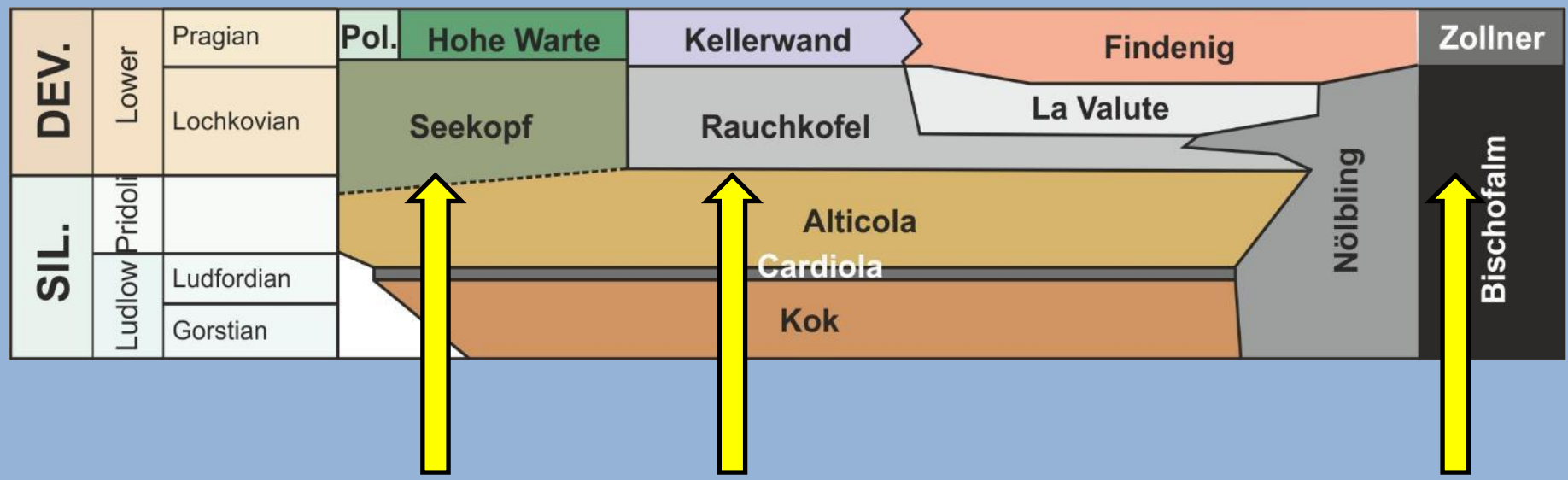
Orthoceras limestones



Graptolitic shales

Siluriano superiore – Lochkoviano

LITOSTRATIGRAFIA



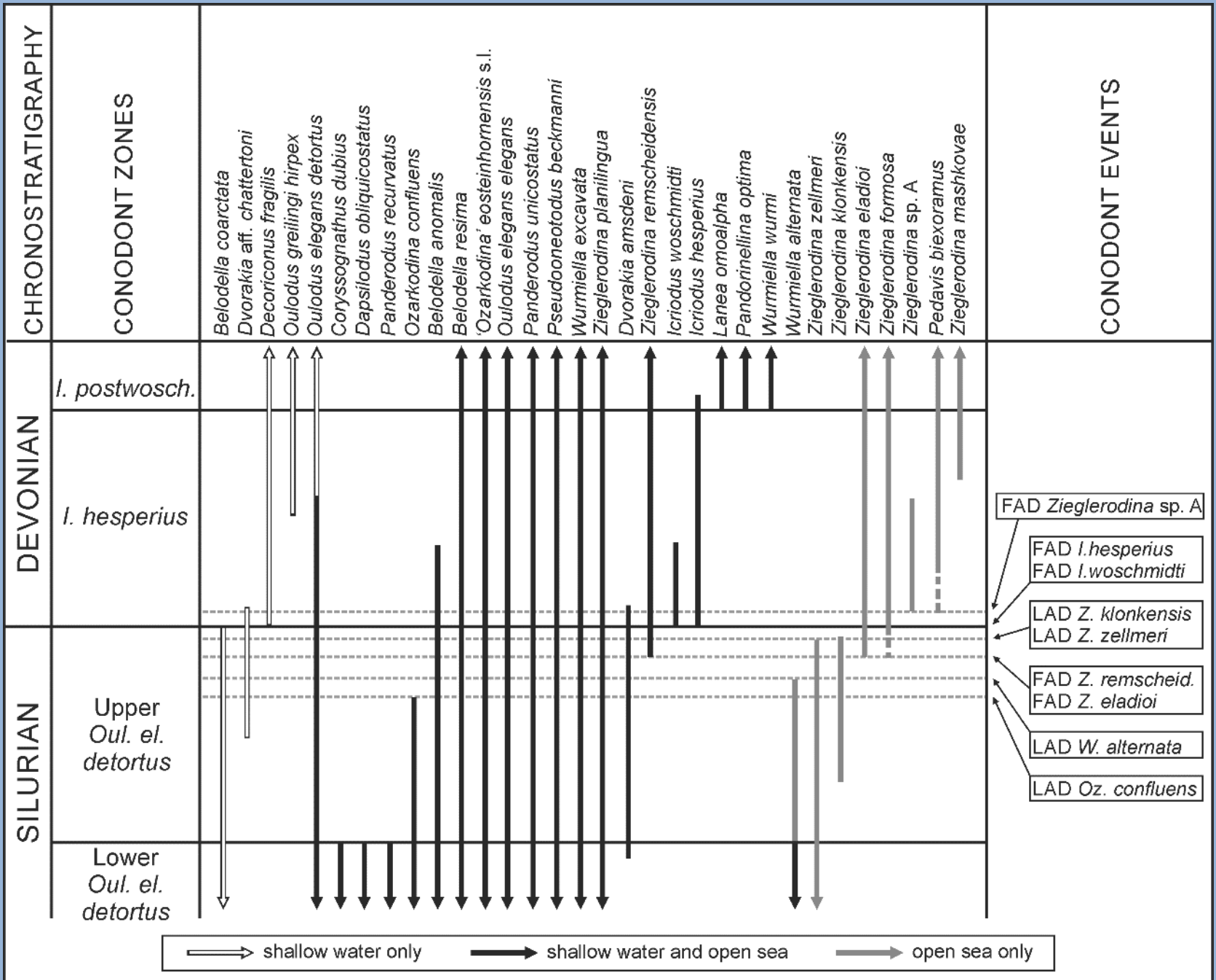
Shallow water grain-/packstones

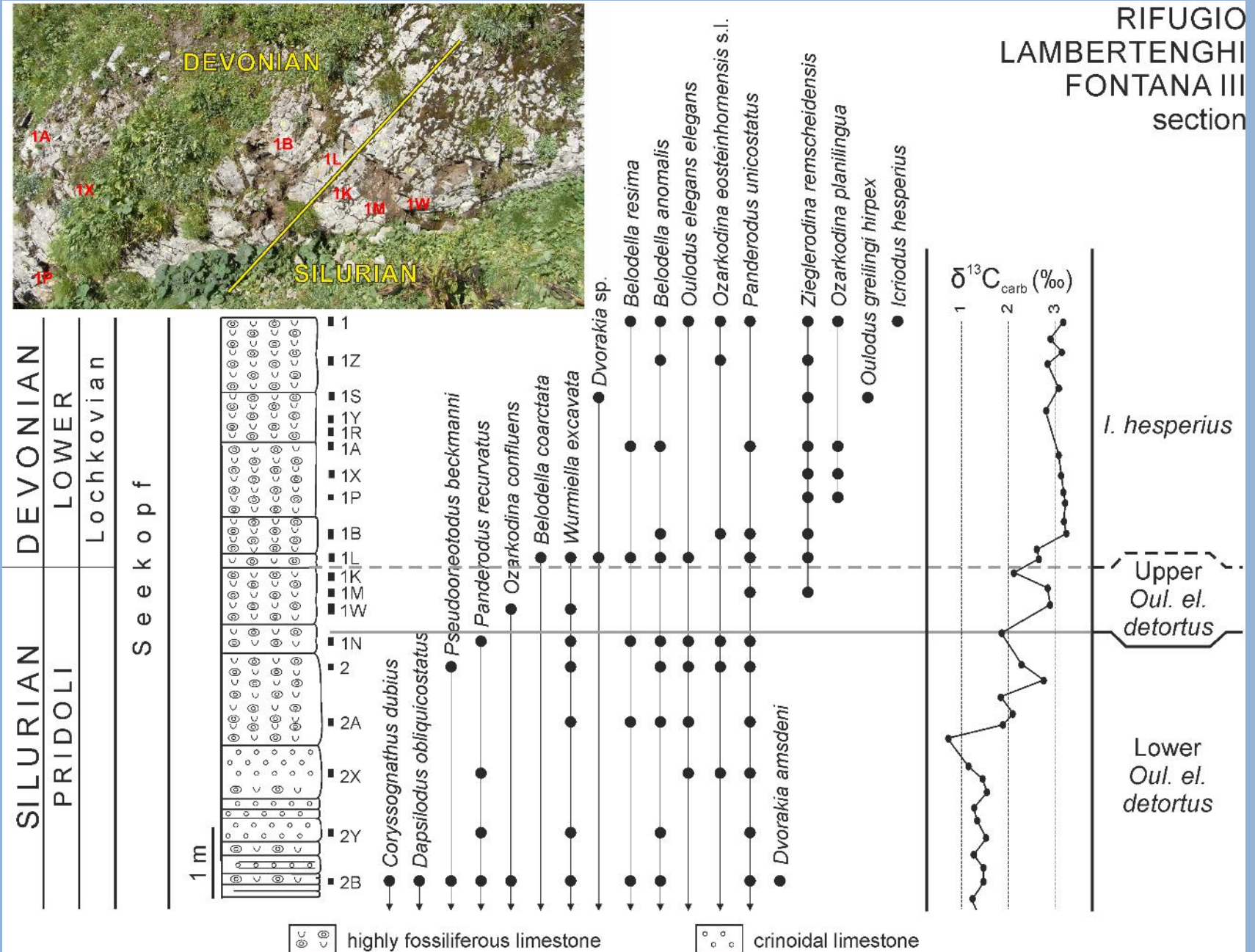


Orthoceras limestones



Graptolitic shales



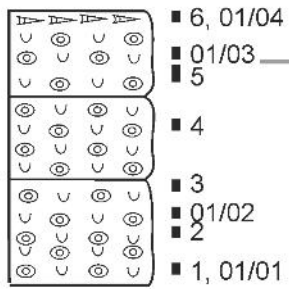




SILURIAN DEV.
PRIDOLI LOW.
Lochk.

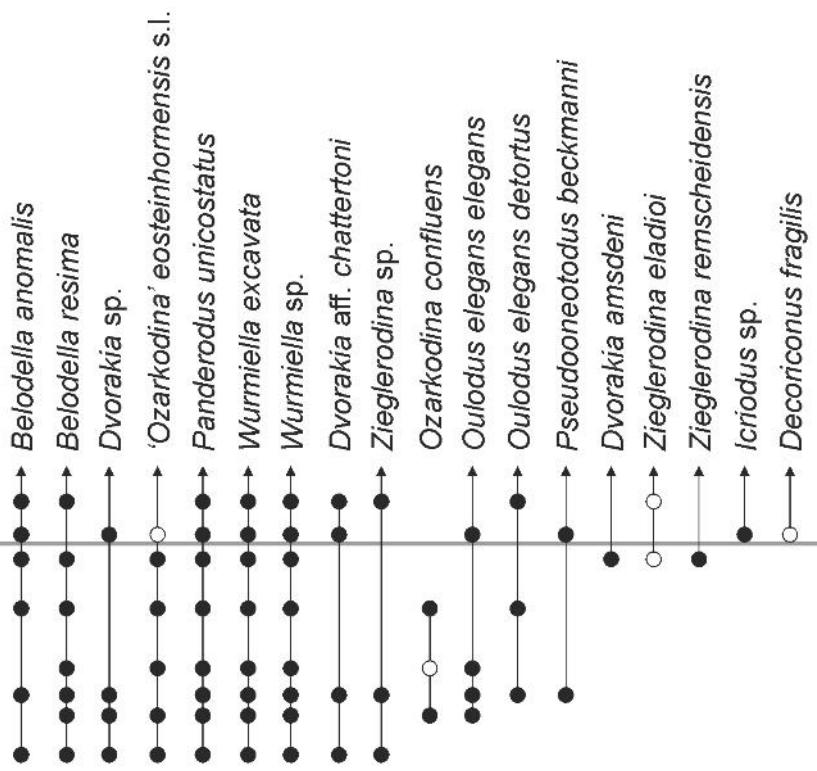
Seekopf

1 m



highly fossiliferous limestone

cephalopod rich bed



SEEWARTE section

I. hesperius

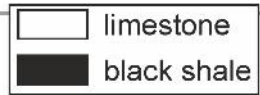
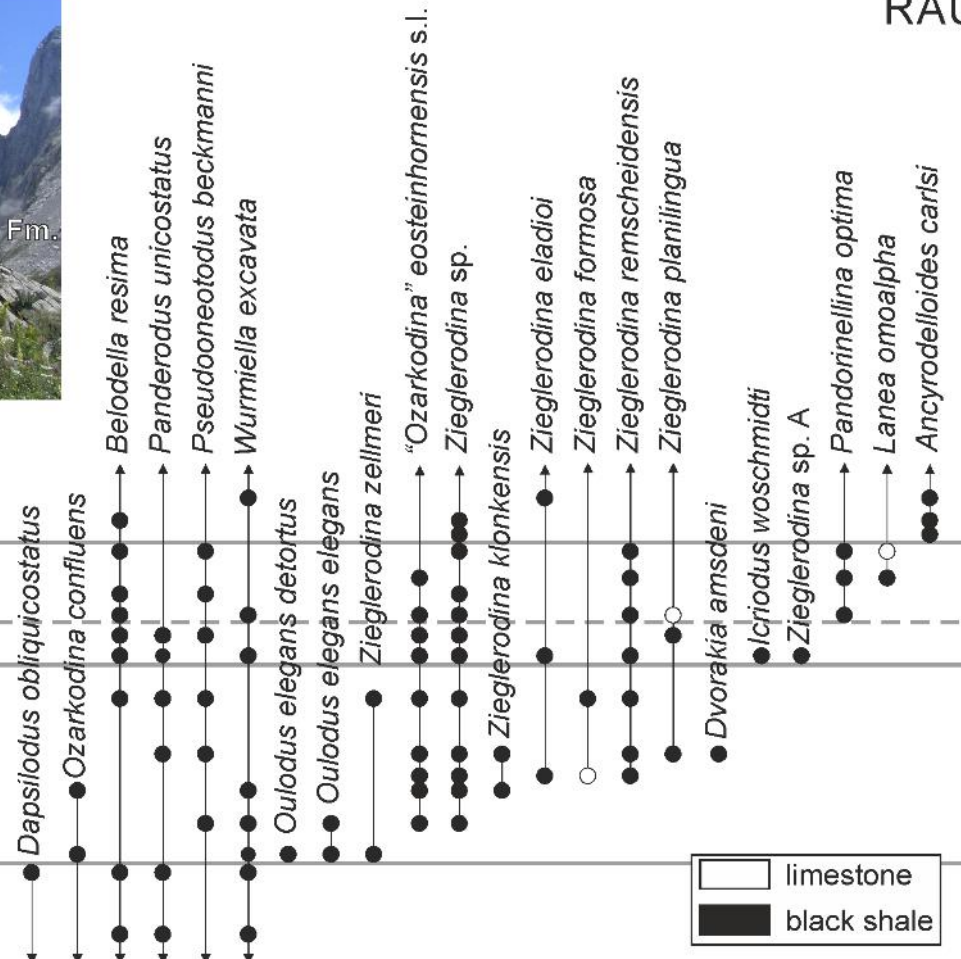
Upper *Oul. el. detortus*



SILURIAN	PRIDOLI	DEVONIAN	LOWER
	Alticola	Rauchkofel	Lochkovian

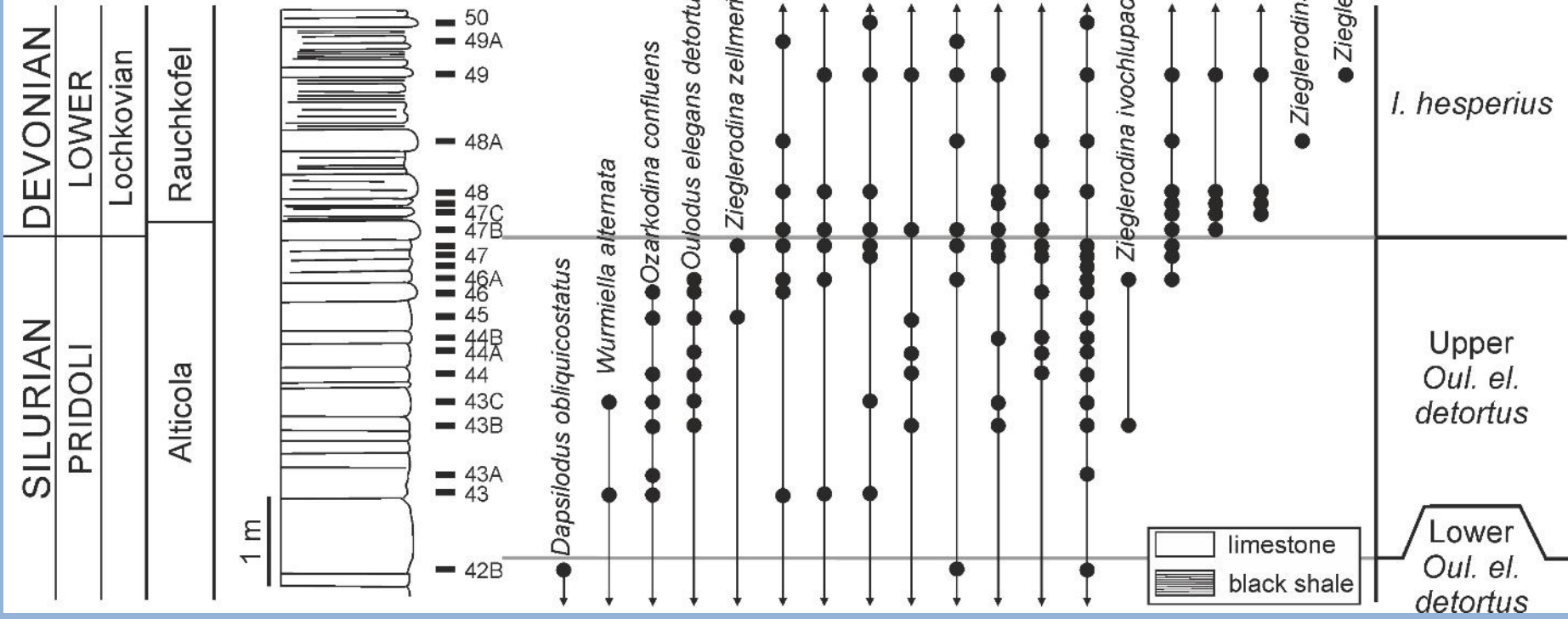
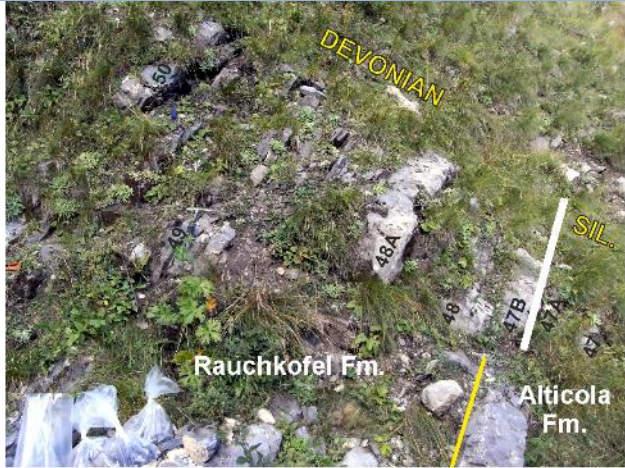


- 201g
- 201f
- 201e
- 201c
- 201b1
- 201b
- 201a
- 201; 332; 7A
- 200; 7W
- 7K
- 199
- 331; 198; 7Z
- 7Y
- 7X
- 7
- 330; 6



RAUCHKOFEL
BODEN
section

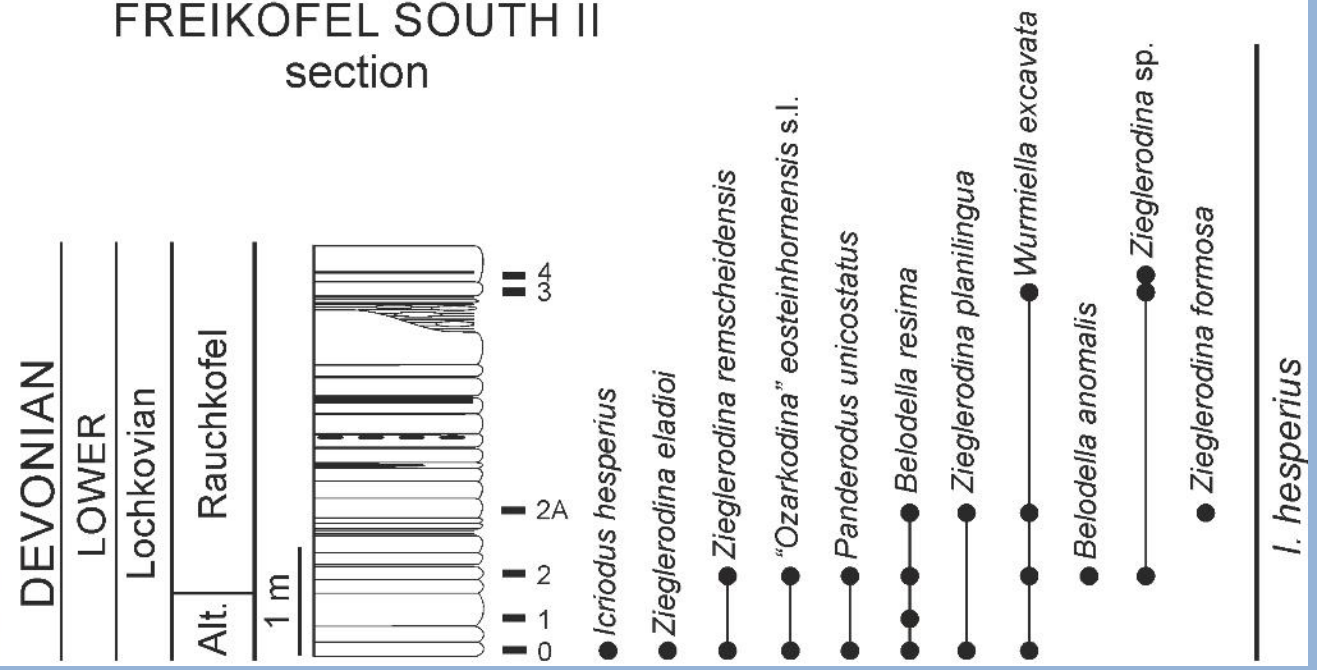
- Ad. carlsi
- I. postwosch.
- I. hesperius
- Upper Oul. el. detortus
- Lower Oul. el. detortus



CELLON section

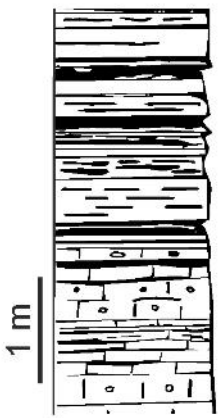


FREIKOFEL SOUTH II section

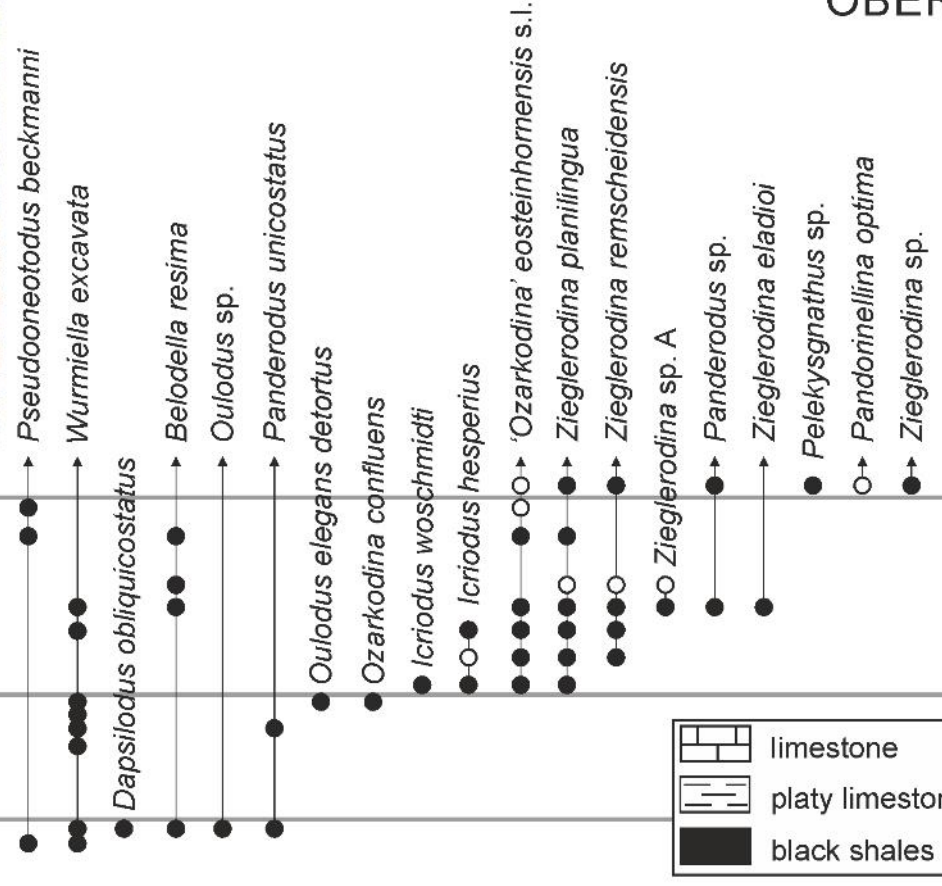




SILUR. DEVON.
PRIDOLI LOWER
Lochkovian
Alticola
Rauchkofel



- 23
- 22
- 21
- 20
- 19
- 18
- 17
- 16
- 14
- 12
- 11
- 10
- xxx



	limestone
	platy limestone
	black shales

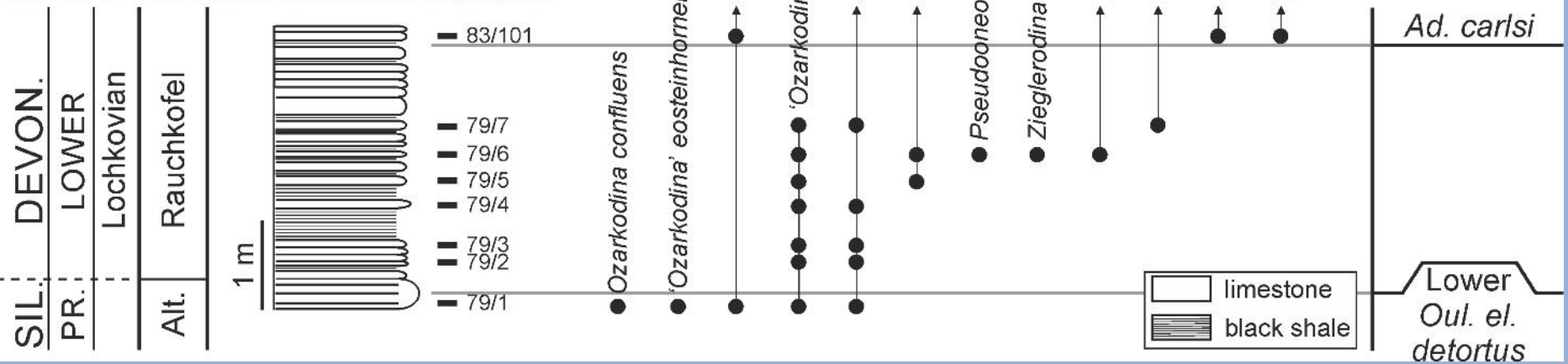
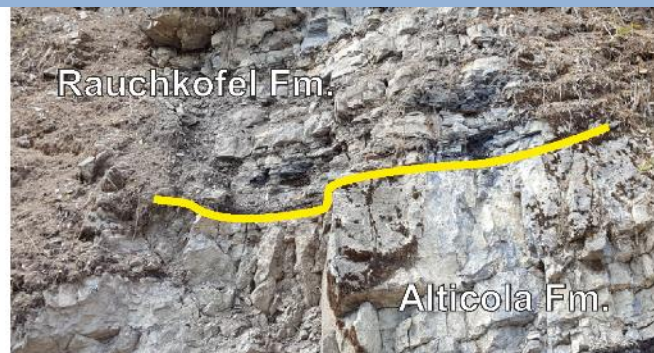
I. postwosch.

I. hesperius

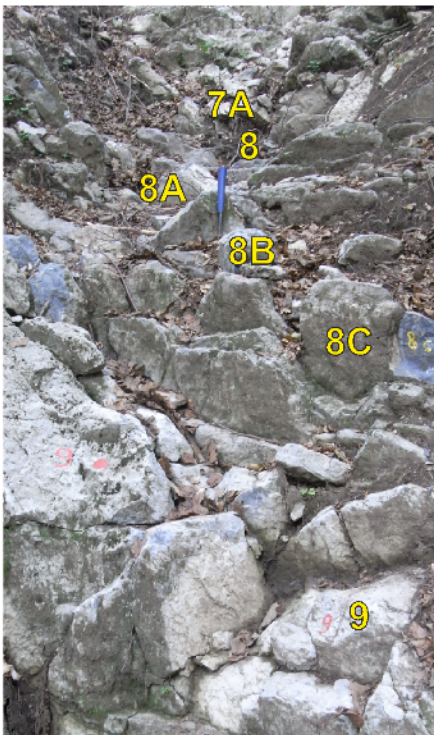
Upper
Oul. el. detortus

Lower
Oul. e. detortus

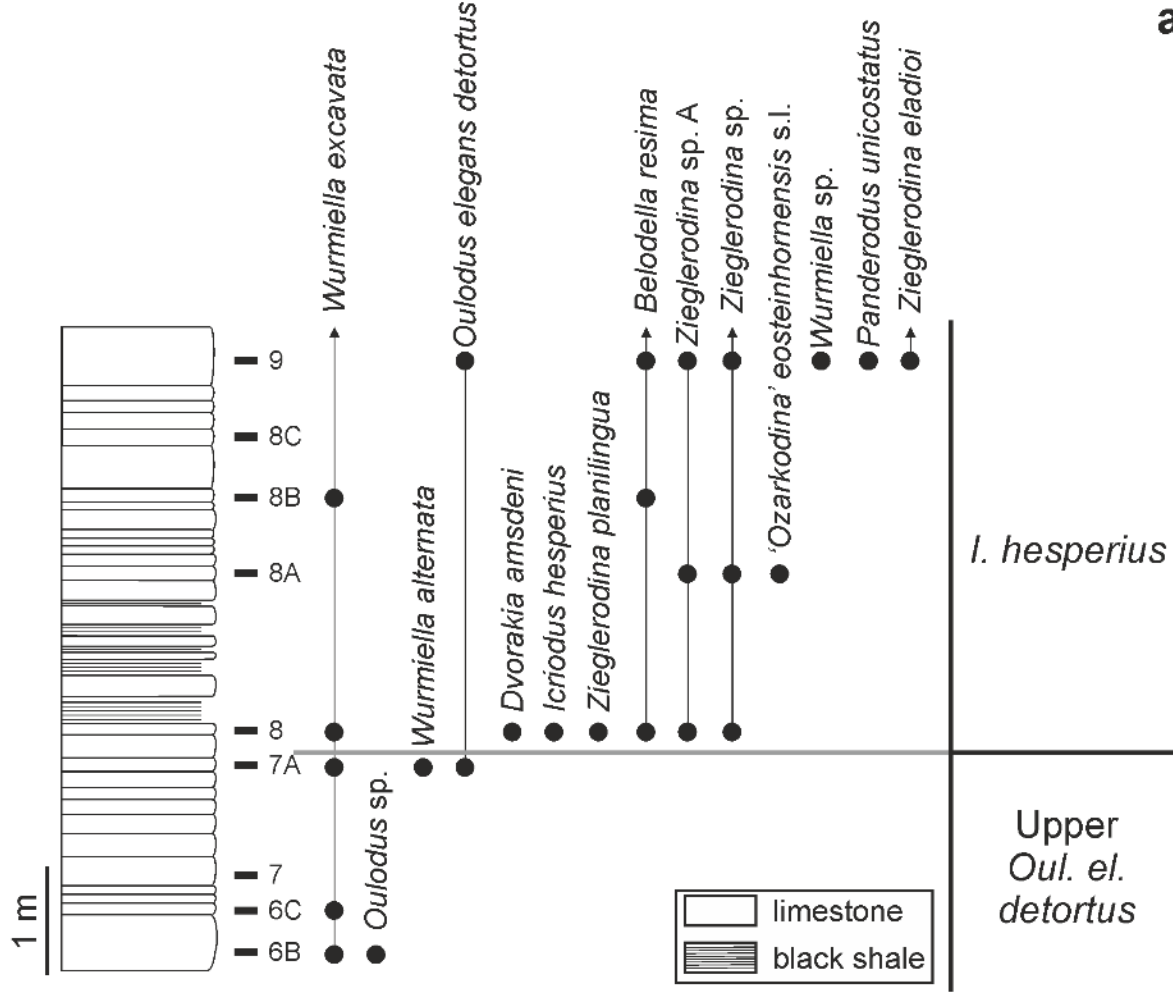
OBERBUCHACH II section



RIO MALINFIER WEST section
Sector A

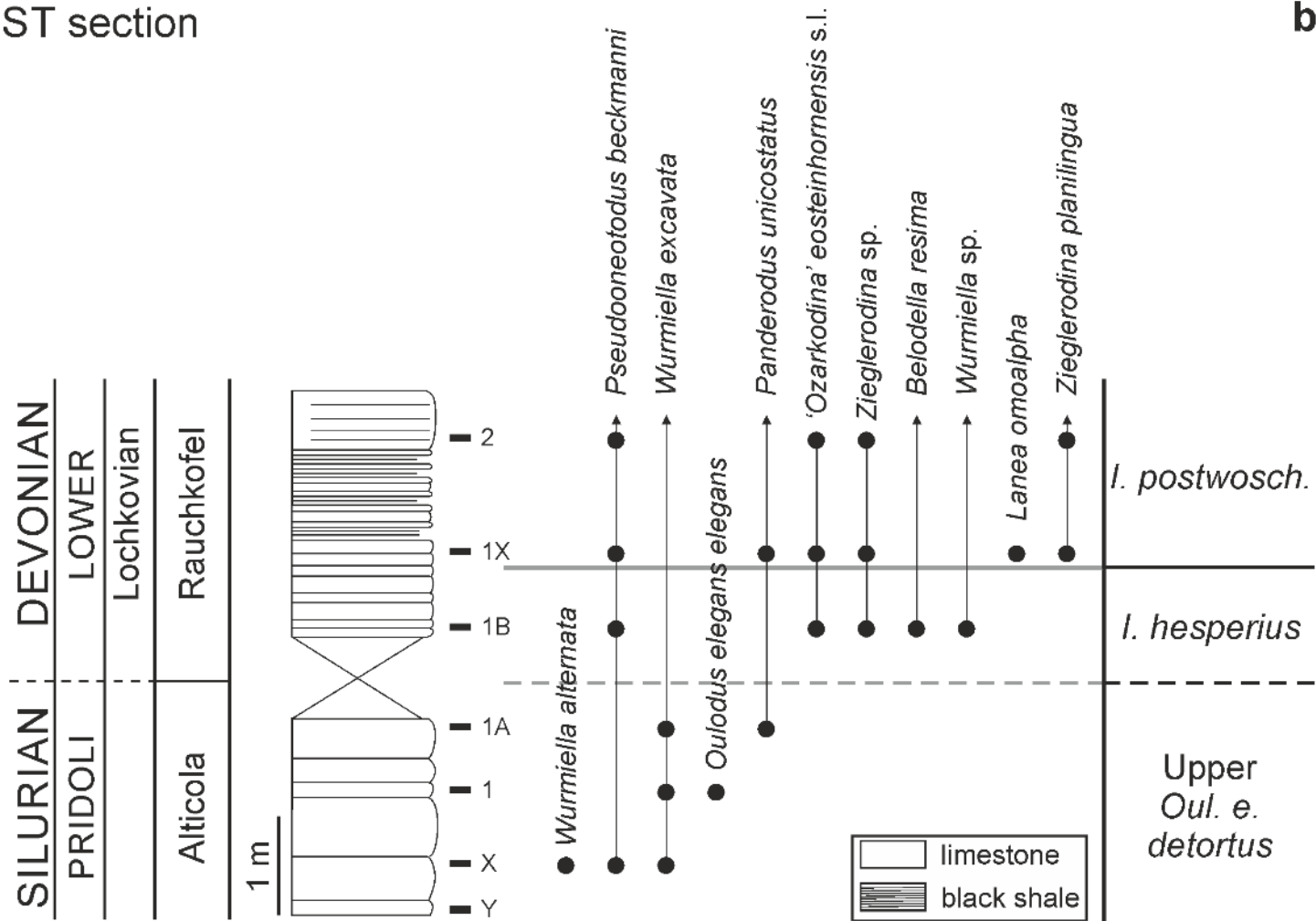
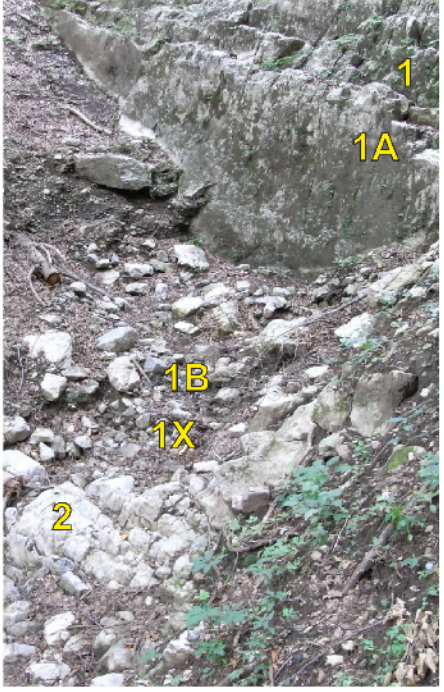


SILURIAN	DEVONIAN
PRIDOLI	LOWER
	Lochkovian
Alticola	Rauchkofel

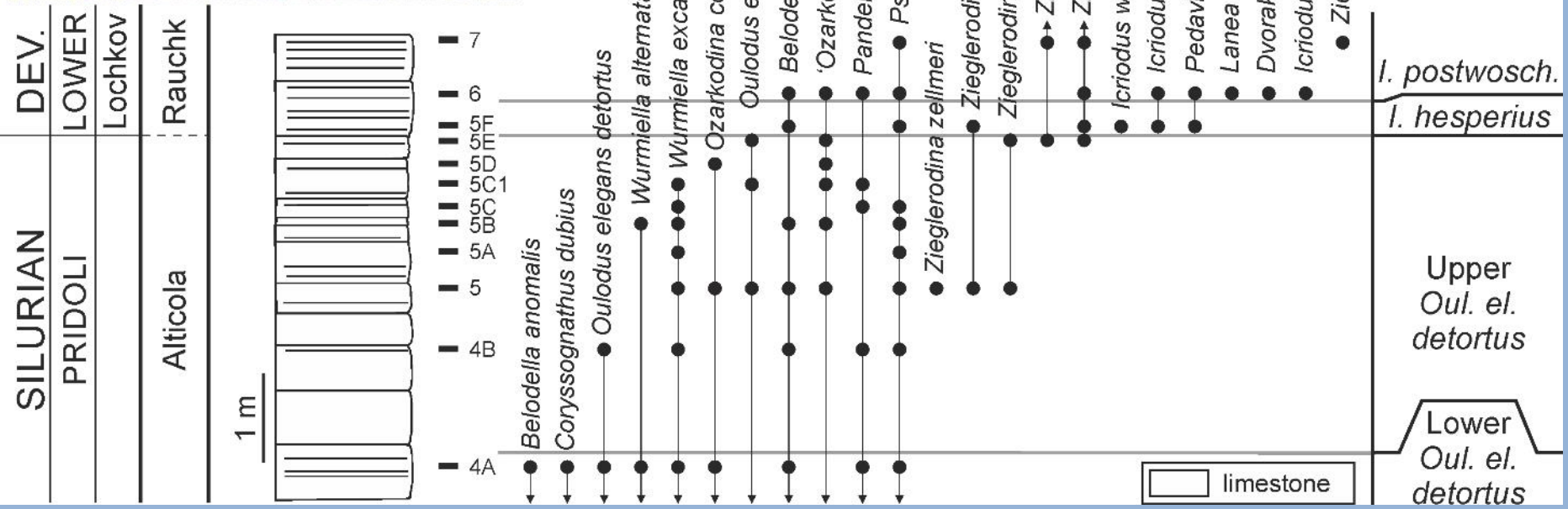


a

RIO MALINFIER WEST section
Sector B



b



MONTE COCCO II section