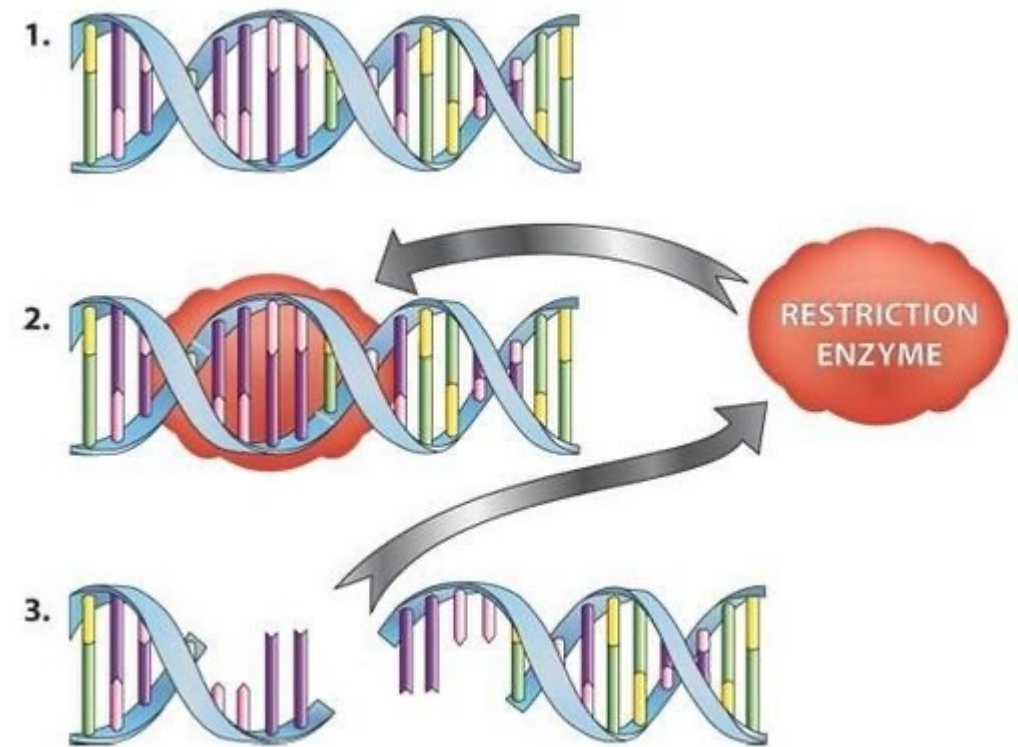


Lesson 17

Restriction enzymes

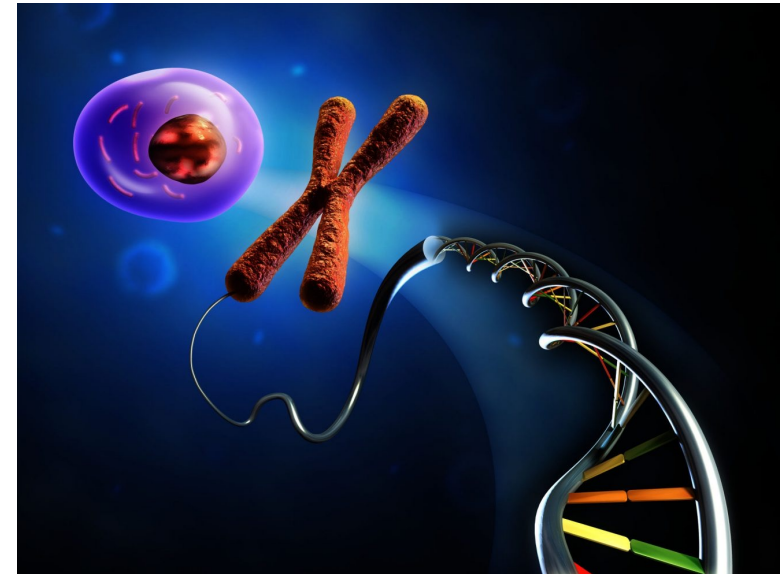


Summary of upcoming lectures

- Genetic engineering
- Restriction endonucleases
- Vectors and ligation
- Polymerase chain reaction (PCR)

Genetic engineering (RDNA)

- Genetic engineering = recombinant DNA technology (RDNA)
 - DNA construction made in the lab
- Molecular cloning = making lots of the same DNA (clones)
 - Why do you want to do this?
 - Obtain a lot of the corresponding protein (via transcription + translation)
 - Purify and study the protein as such or modify it as *e.g.*, a therapeutic agent
 - Study that particular DNA sequence – gene
 - ...



Genetic engineering - 1

Genetically engineered animals are produced for:

Nutrition (e.g., cows that produce hypoallergenic milk or are resistant to bacterial infections)

Research (e.g., transgenic mice for disease studies)

Fun (e.g., fishes that glow in the dark)



Genetic engineering - 2

Genetically engineered food are produced for, *e.g.*, :

More nutritious and/or tastier food

Disease- and drought-resistant plants that require fewer environmental resources (such as water and fertilizers)

Less use of pesticides

Increased supply of food with reduced cost and longer shelf life

Faster growing plants....



Golden rice
Engineered to produce β -carotene which is fundamental to prevent vitamin A deficiency in rice-based diet



Creating foods that can cause an allergic reaction or that are toxic
Unexpected or harmful genetic changes

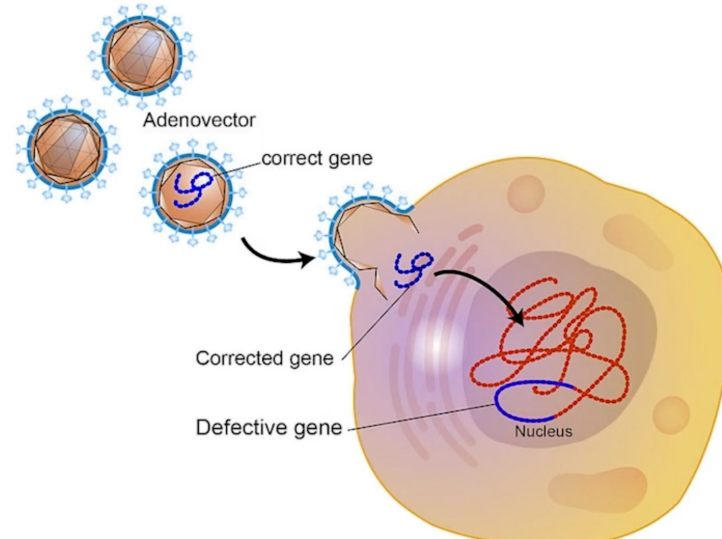
Genes moving from one GM plant or animal to another plant or animal that is not genetically engineered

Foods that are less nutritious

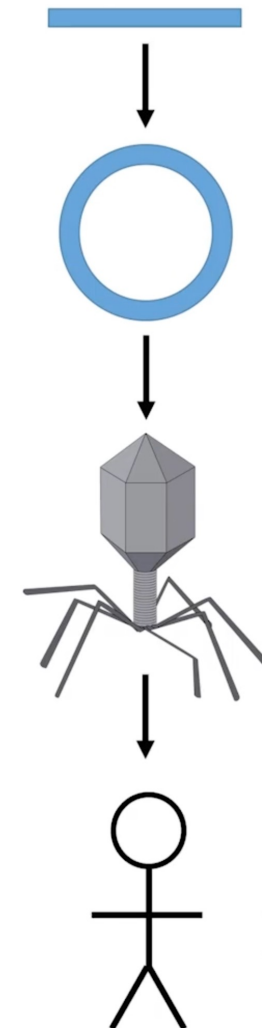
These concerns have proven to be unfounded. None of the GE foods used today have caused any of these problems (<https://medlineplus.gov/ency/article/002432.htm>)

Genetic engineering - 3

MEDICINE



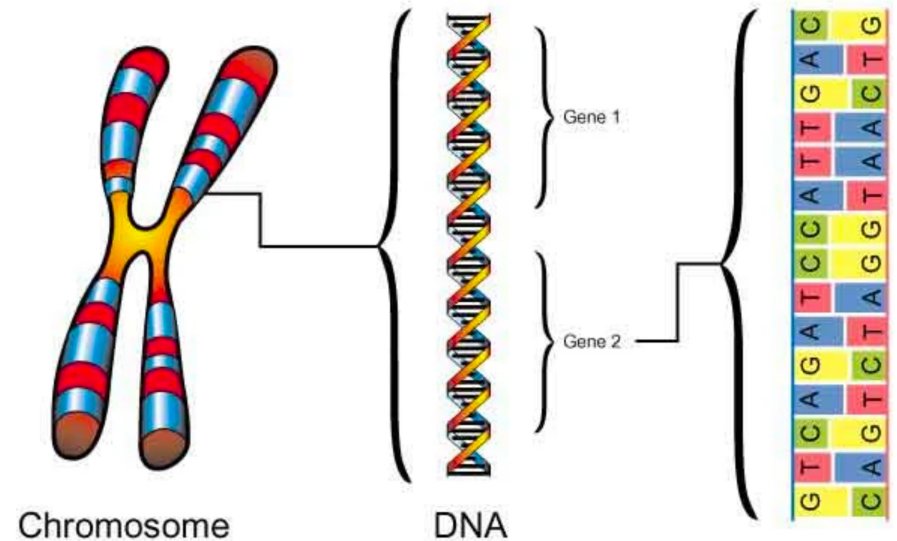
CFTR Gene



Cystic
Fibrosis
Patient

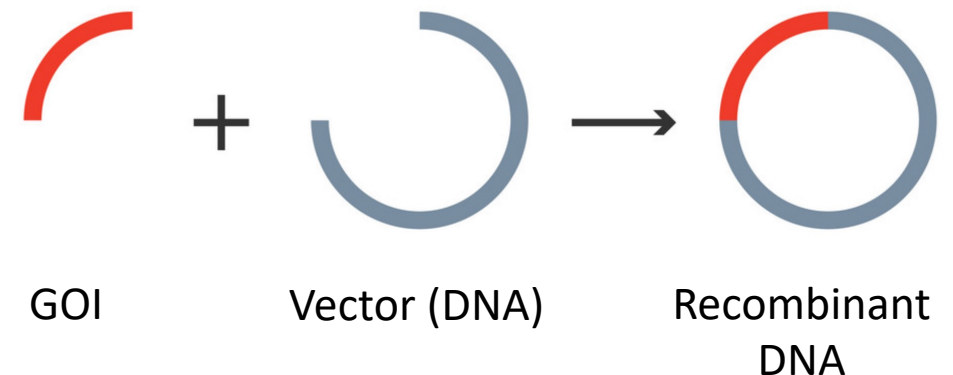
Building recombinant DNA

- Basic step of building recombinant DNA
 - Recombinant DNA = DNA that comes from 2 or more sources
- 1. Identify your **gene of interest (GOI)** that you want to reproduce on the corresponding chromosome



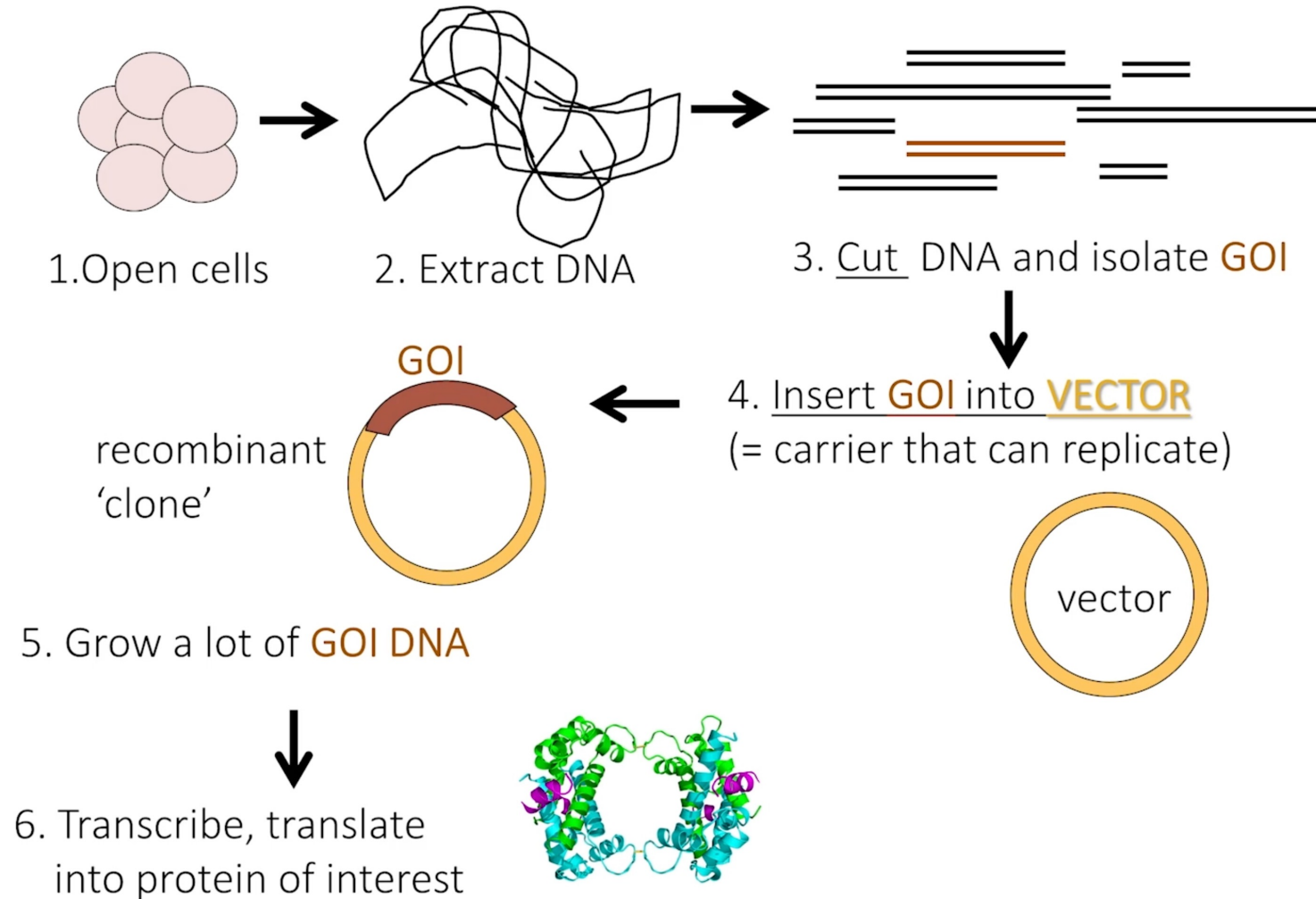
Building recombinant DNA

- Basic step of building recombinant DNA
 - Recombinant DNA = DNA that comes from 2 or more sources
- 1. Identify your gene of interest (GOI) that you want to reproduce on the corresponding chromosome
- 2. Cut your GOI DNA from a larger piece and paste it into a **vector**
 - **Vector = carrier = DNA that replicates very avidly**
 - Grows lots of your clone DNA



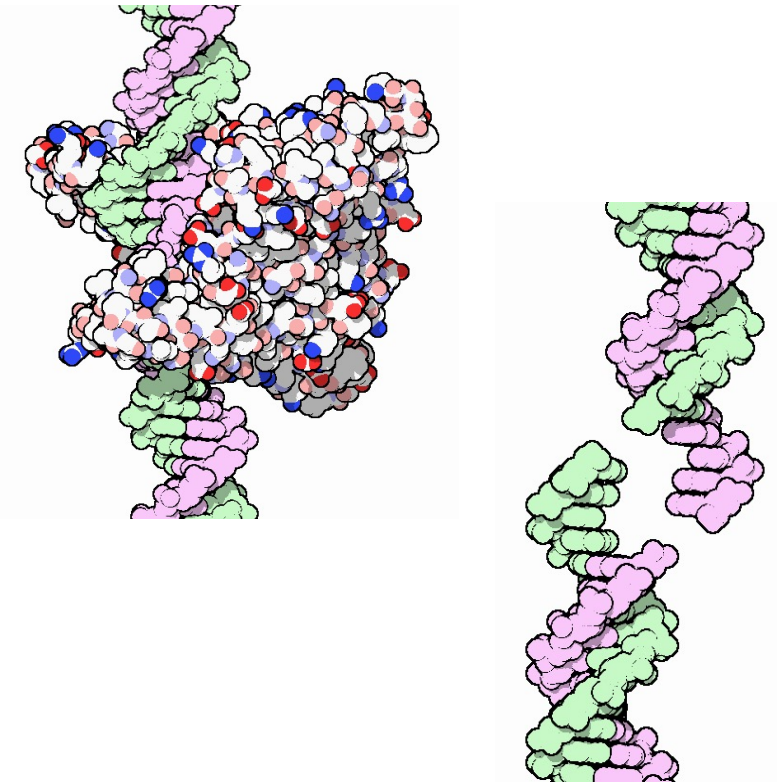
Building recombinant DNA

Cloning and using a gene of interest (GOI)



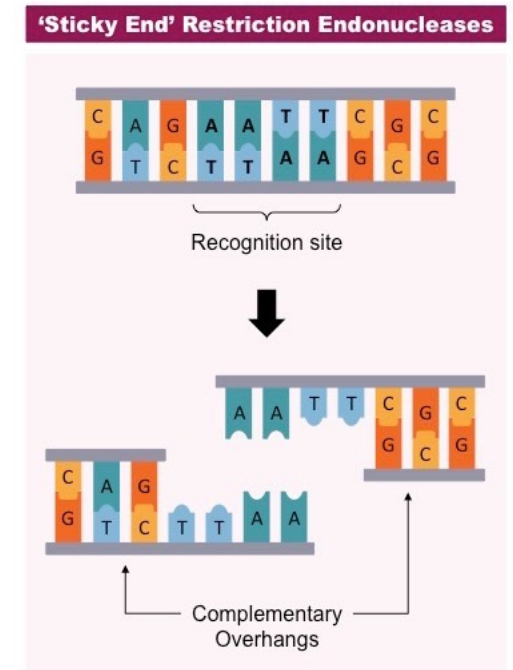
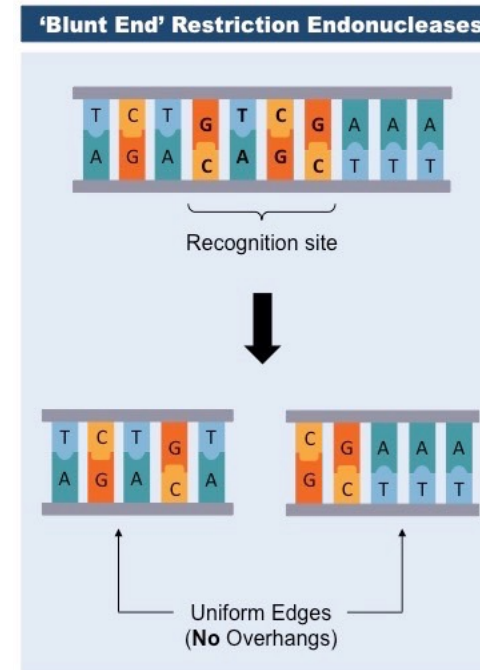
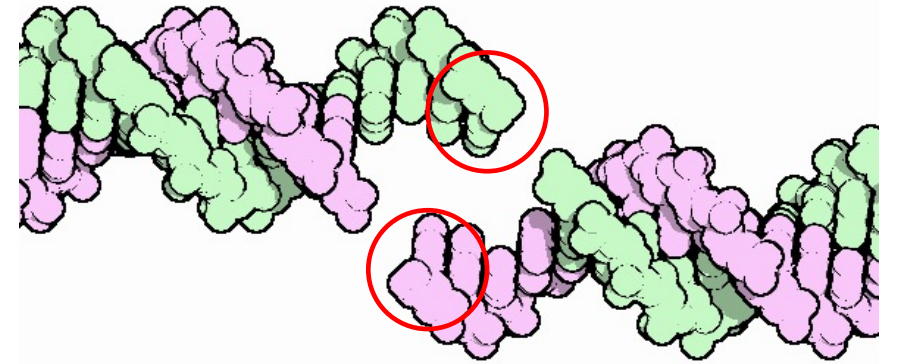
Cutting DNA

- DNA cutting is performed using specific proteins
 - **Restriction endonucleases (REs)** (enzymes)
- REs precisely cut DNA at specific locations (“molecular scissors”)
 - **REs:**
 1. Recognize particular DNA sequences
 2. Bind to these sequences
 3. **Break the double-stranded DNA at these specific locations**



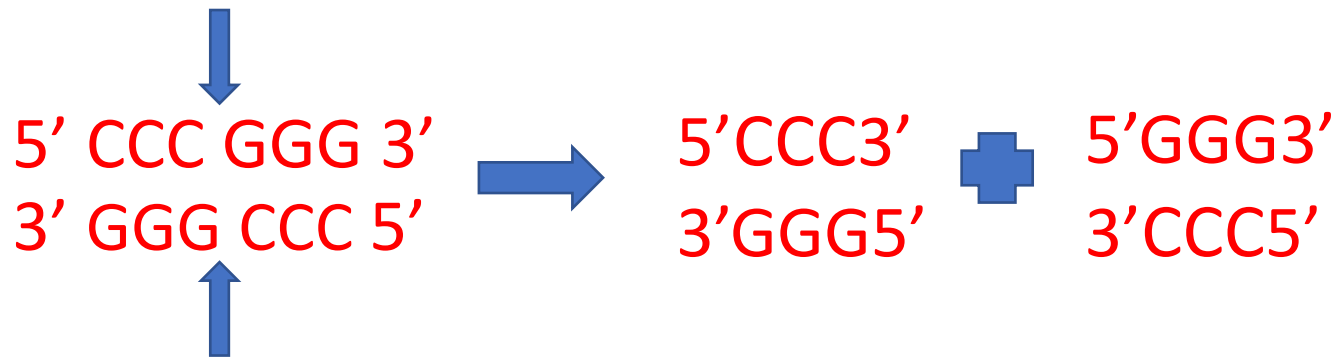
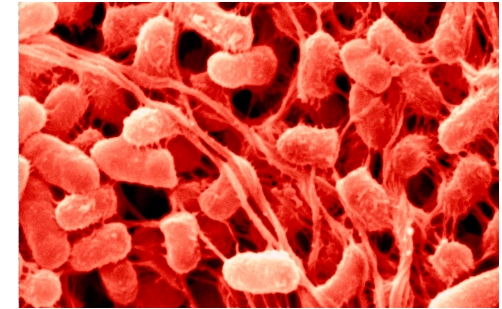
Cutting DNA

- DNA cutting is performed using specific proteins
 - Restriction endonucleases (REs) (enzymes)
- REs precisely cut DNA at specific locations (“molecular scissors”)
 - REs:
 1. Recognize particular DNA sequences
 2. Bind to these sequences
 3. Break the double-stranded DNA at these specific locations
- An RE cut may leave two types of DNA ends:
 - **Blunt ends**
 - **Sticky ends**



Blunt end (BE) restriction endonucleases

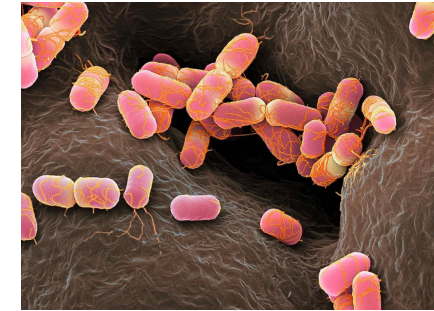
- Prototypical example: **Sma1** (aka **SmaI**)
 - Derived from the bacterium *Serratia marcescens* (hospital opportunistic infections)
 - REs are an important part of bacterial defense system
 - *e.g.*, after a DNA virus attack, the bacterial REs destroy the invader DNA by cutting into pieces
- Sma1 DNA recognition site:



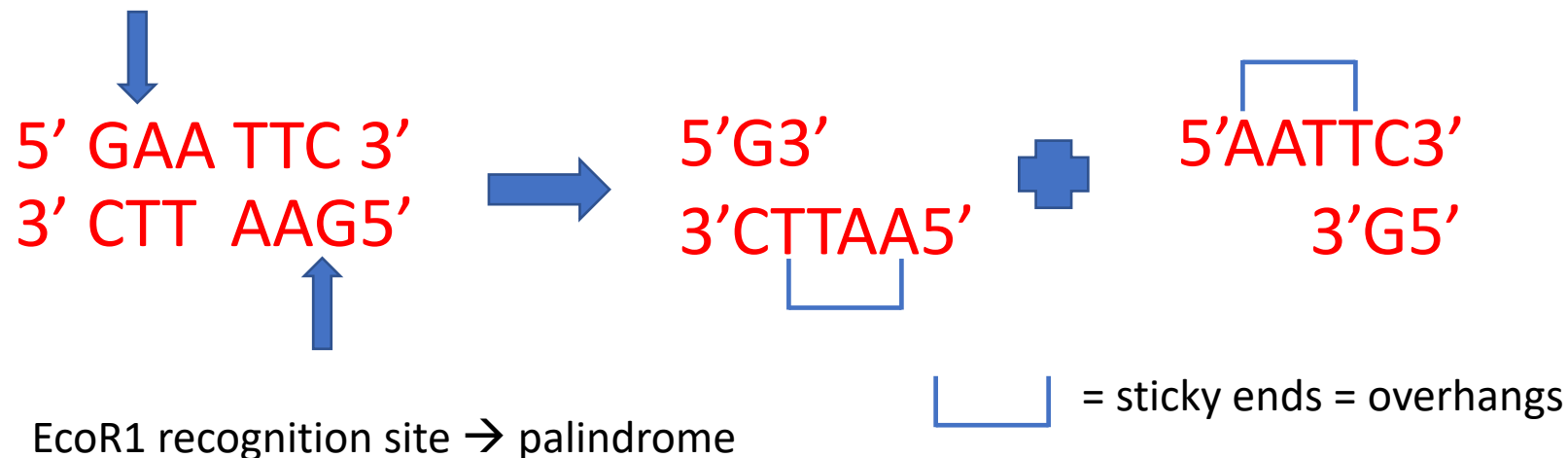
All sequence ends have
paired nucleotides
NO unpaired nucleotides
(blunt ends)

Sma1 recognition site → palindrome → many RE recognition sites are palindromic

Sticky end (SE) restriction endonucleases



- Prototypical example: EcoR1 (aka EcoRI)
 - Derived from the bacterium *Escherichia coli*
 - *E. coli* forms part of the digestive flora and is always present in fecal matter
 - *E. coli* infections cover a range of severities of urinary tract infection
- EcoR1 DNA recognition site:

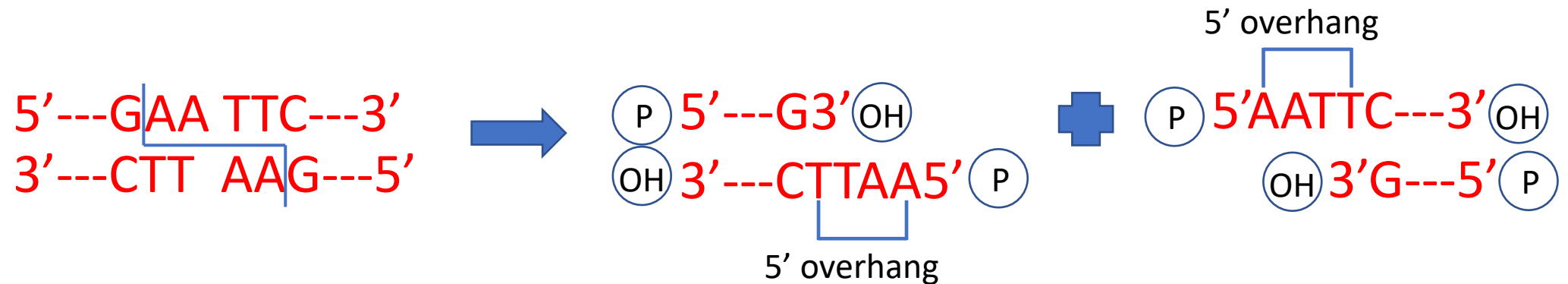


Single-stranded (ss) DNAs result after the cut
These ss DNAs can base pair with complementary sequences
sticky ends

Sticky end (SE) restriction endonucleases

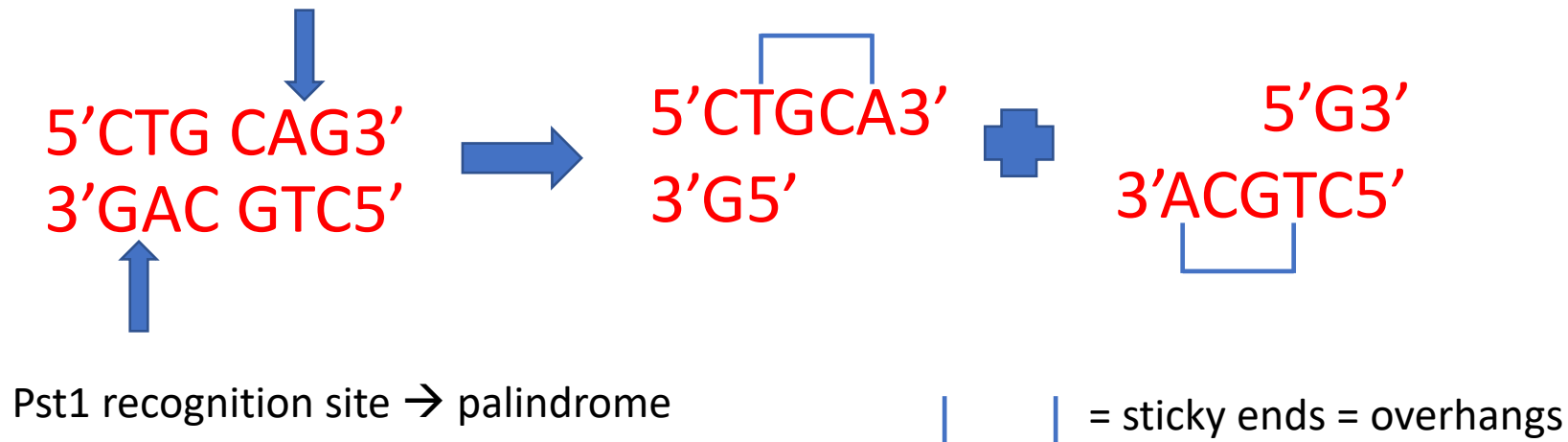
- EcoR1 leaves **5' overhangs**

- *If the single-stranded bases end with a 5' phosphate, the RE enzyme is said to leave 5' overhangs*



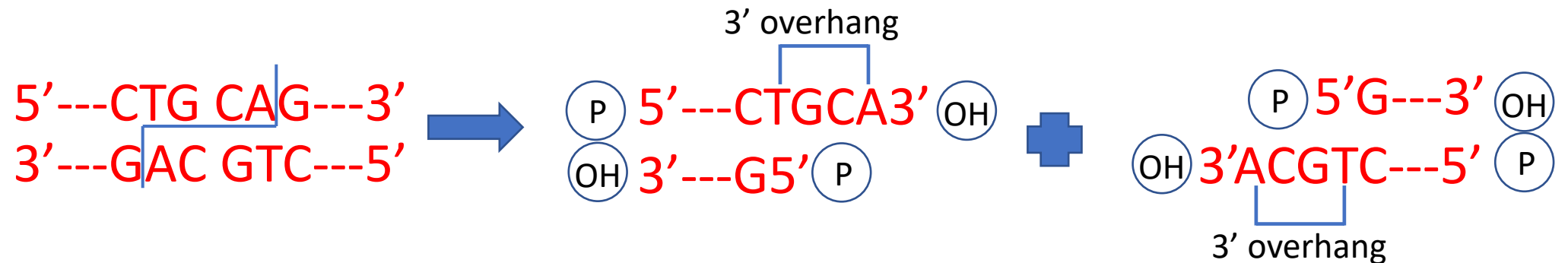
Sticky end (SE) restriction endonucleases

- There are also SE RE enzymes that leave 3' overhangs:
- Prototypical example: Pst1 (often PstI)
 - Derived from the bacterium *Providencia stuartii*
 - *P. Stuartii* is an opportunistic pathogen seen in patients with severe burns or urinary infections
- Pst1 DNA recognition site:



Sticky end (SE) restriction endonucleases

- PST1 leaves **3' overhangs**
 - *If the single-stranded bases end with a 3' hydroxyl, the enzyme is said to leave 3' overhangs*



REs - recap

- There are > 3,000 REs, named after the bacterium they were discovered in
- REs database:
 - You can find an RE that cuts the DNA exactly where you want to

Enzyme	Source organism	Restriction recognition site	Structure of the cleaved products
EcoRI	<i>Escherichia coli</i>	$ \begin{array}{c} \downarrow \\ 5'-G-A-A-T-T-C-3' \\ 3'-C-T-T-A-A-G-5' \\ \uparrow \end{array} $	$ \begin{array}{ccc} 5'-G & & A-A-T-T-C-3' \\ \longrightarrow & & \\ 3'-C-T-T-A-A & & G-5' \\ & & \text{5' overhang} \end{array} $
PstI	<i>Providencia stuartii</i>	$ \begin{array}{c} \downarrow \\ 5'-C-T-G-C-A-G-3' \\ 3'-G-A-C-G-T-C-5' \\ \uparrow \end{array} $	$ \begin{array}{ccc} 5'-C-T-G-C-A & & G-3' \\ \longrightarrow & & \\ 3'-G & & A-C-G-T-C-5' \\ & & \text{3' overhang} \end{array} $
SmaI	<i>Serratia marcescens</i>	$ \begin{array}{c} \downarrow \\ 5'-C-C-C-G-G-G-3' \\ 3'-G-G-G-C-C-C-5' \\ \uparrow \end{array} $	$ \begin{array}{ccc} 5'-C-C-C & & G-G-G-3' \\ \longrightarrow & & \\ 3'-G-G-G & & C-C-C-5' \\ & & \text{Blunt ends} \end{array} $