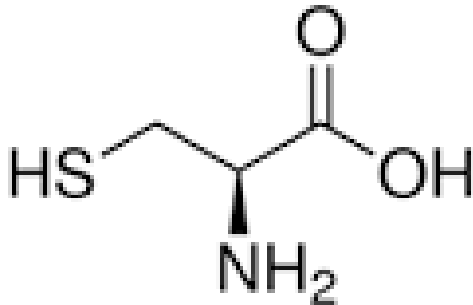
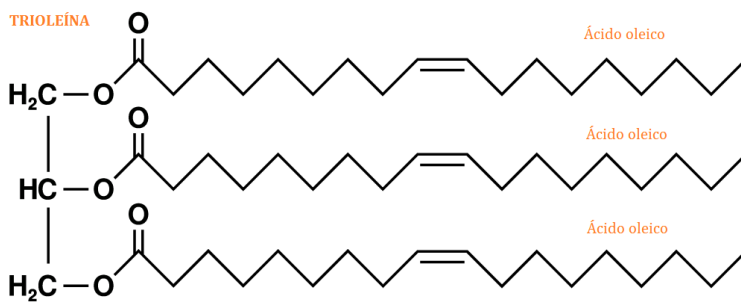


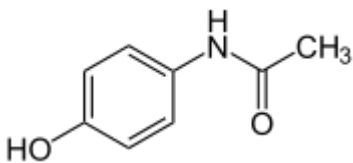
Esercizi: riconoscimento gruppi funzionali



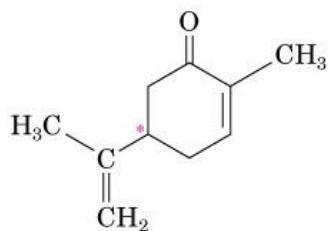
Cisteina: amminoacido



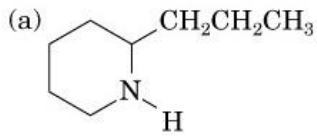
Trioleina: un trigliceride



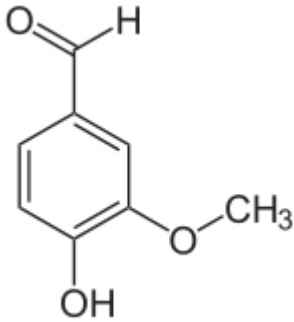
Paracetamolo (tachipirina)



Carvone
(olio essenziale di menta)



Coniina
(agente tossico
della cicuta)



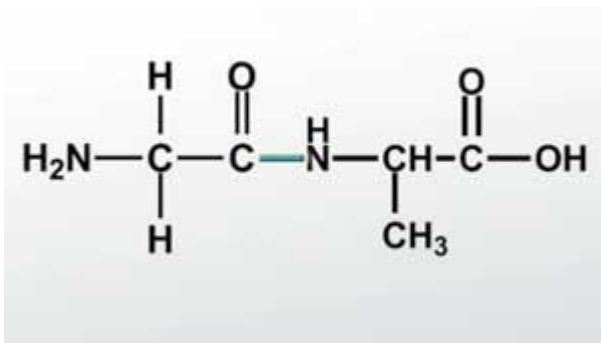
Vanillina



Metil butanoato
(essenza di ananas)



Isopentile acetato
(banana)



Glicil alanina (un dipeptide)

