

Data Visualization

ASSIGNMENT 2: RESULTS

Tea Tušar, Data Science and Scientific Computing, Information retrieval and data visualization

Assignment 2

Getting heavier, younger: trajectories of obesity over the life course

<https://pubmed.ncbi.nlm.nih.gov/19949415/>

Study documenting generational patterns of obesity from early childhood through adulthood across birth cohorts

Birth cohort = group of people born during a particular period

The study took place between 1971 and 2006

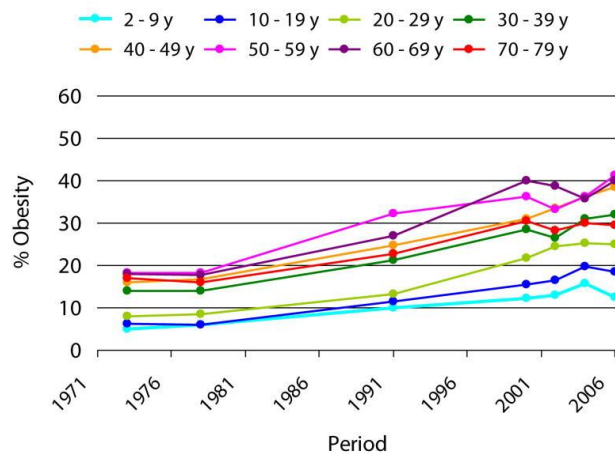
The data: % of obesity

People born between 1976-1985

Age group	1996-2005	1986-1995	1976-1985	1966-1975	1956-1965	1946-1955	1936-1945	1926-1935
2-9 y	12,00	15,77	14,14	5,82	5,63			
10-19 y		18,39	15,10	9,60	5,77	7,03		
20-29 y			23,56	23,63	12,46	8,68	9,11	
30-39 y				29,60	27,66	20,63	14,35	13,63
40-49 y					36,39	30,45	21,86	16,54
50-59 y						37,15	36,18	28,81
60-69 y							39,47	34,70
70-79 y								31,23

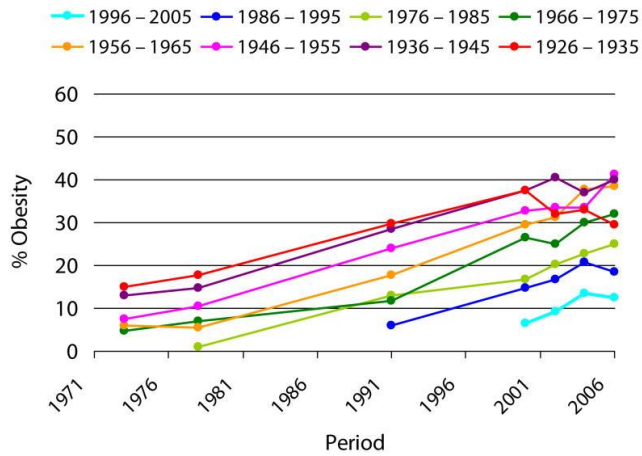
3

Figure 1: Period trends in obesity prevalence by age group



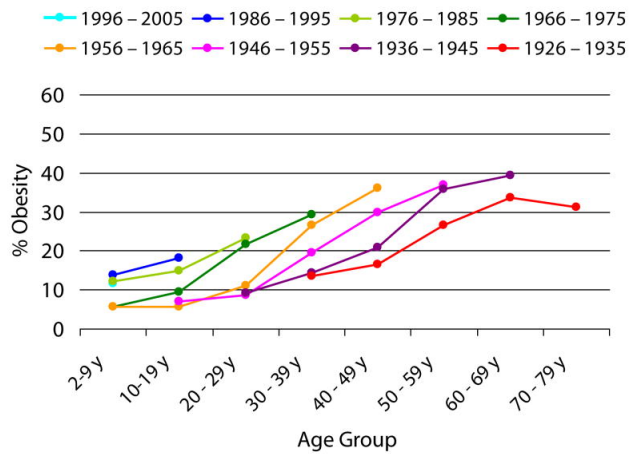
4

Figure 2: Period trends in obesity prevalence by birth cohort



5

Figure 3: Age trends in obesity prevalence by birth cohort



6

Assignment 2

Assignment completed by 9 students

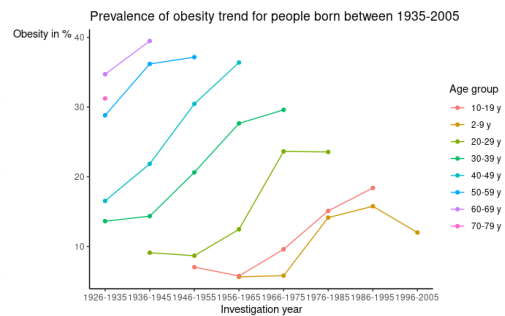
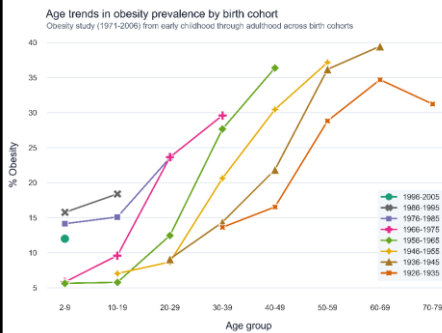
Clear improvement over the first assignment (for the most part)

- Choice of colors
- Titles and annotations
- Polished design

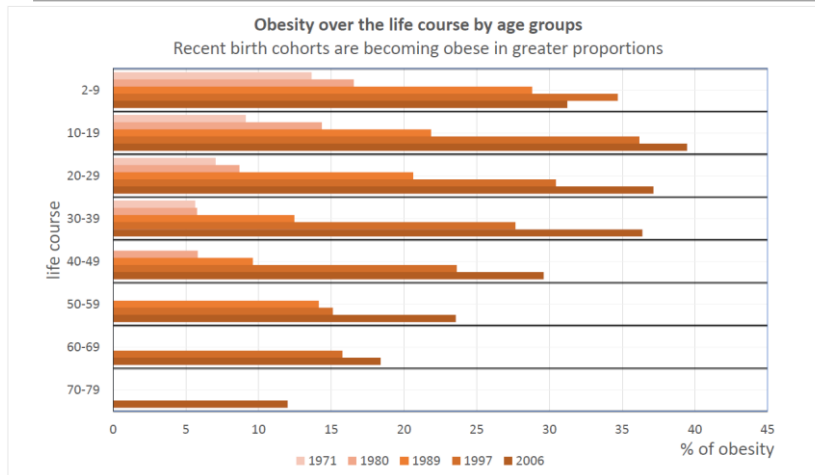
Still missing (for the most part)

- Source of the data
- Rotation of the vertical text

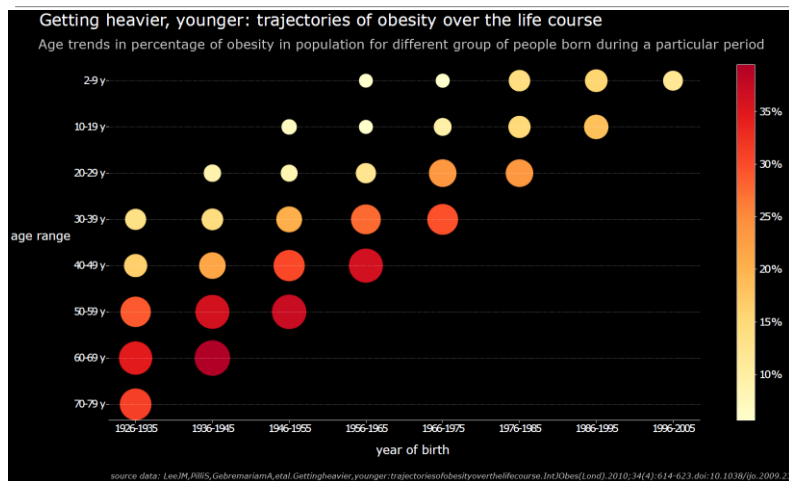
Line charts (redesigns)



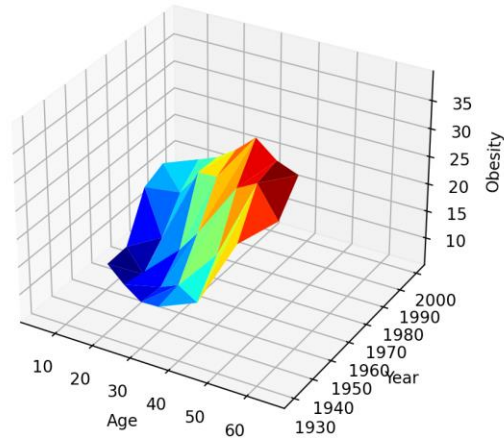
Bar chart



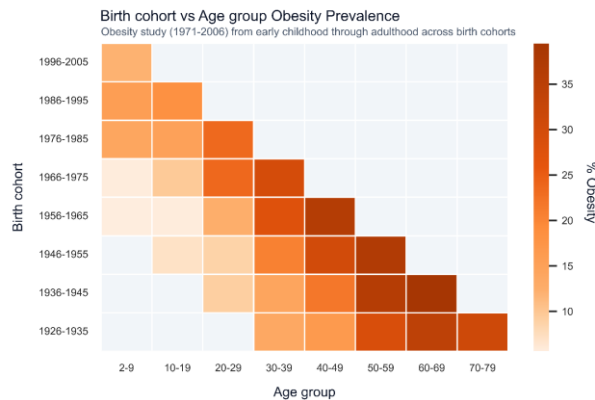
Bubble chart



Surface plot

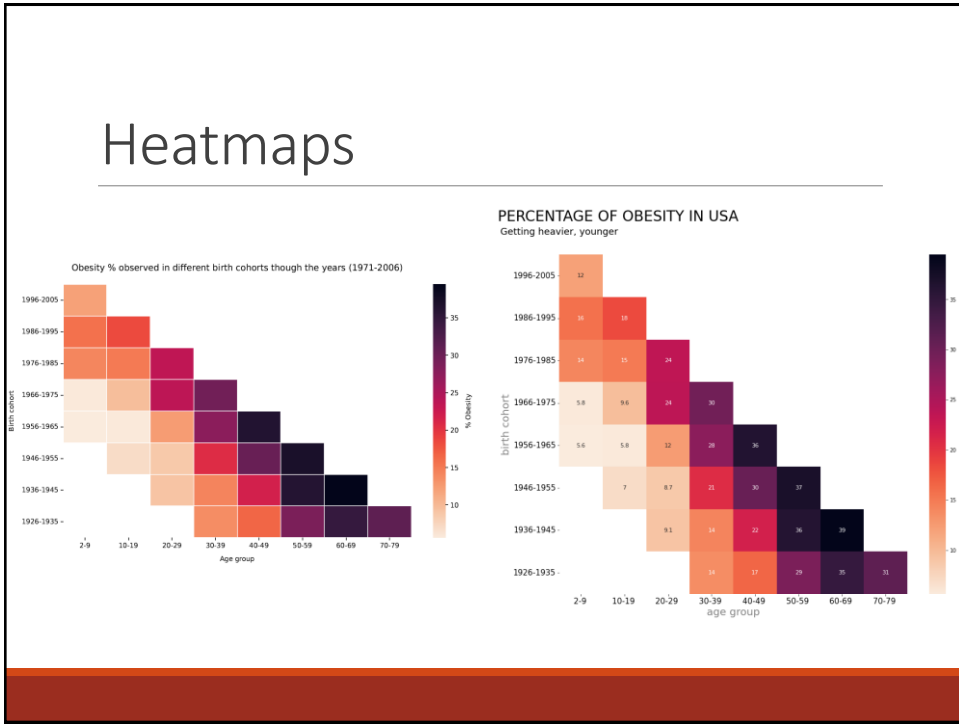


Heatmaps



Birth cohort: group of people born during a particular period

Heatmaps



Heatmaps

