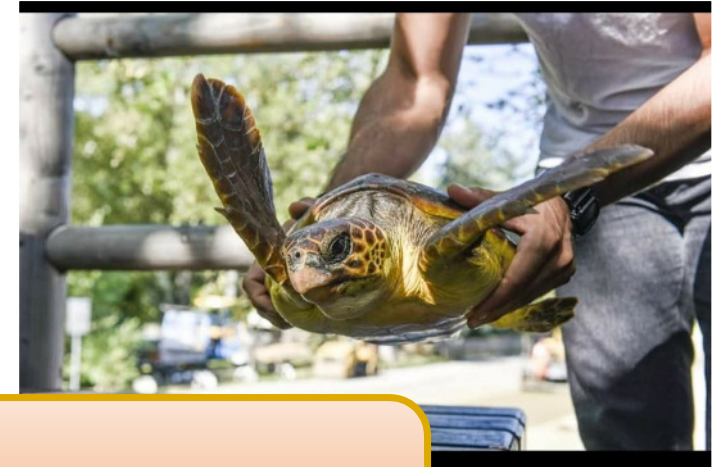


Dr.ssa Gemma Boschini



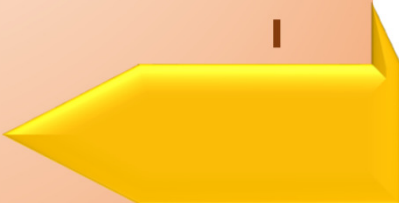
CENTRI DI RECUPERO



PUNTI CHIAVE

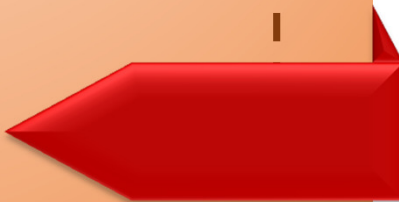


CENTRI DI RECUPERO



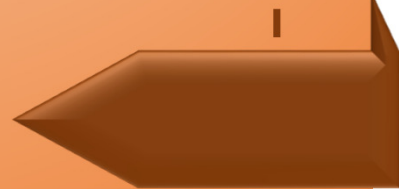
C.R.A.S.

Una realtà ancora poco conosciuta



C.R.A.E.

Specie esotiche invasive



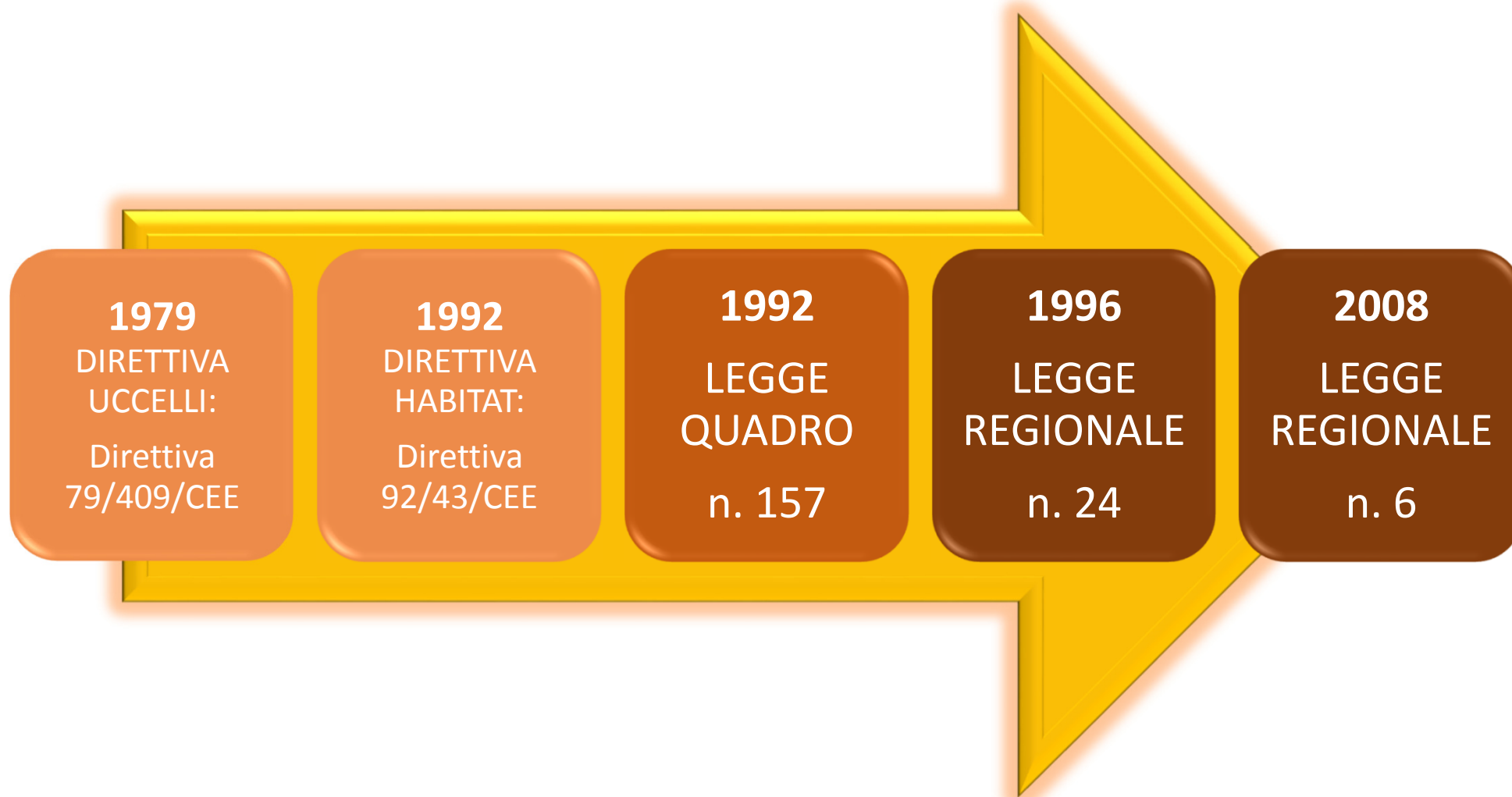
TERRANOVA

CRAS – CRAE – Tartarughe marine

C.R.A.S.
CENTRI
RECUPERO
ANIMALI
SELVATICA



RIFERIMENTI NORMATIVI C.R.A.S.



SOCCORSO



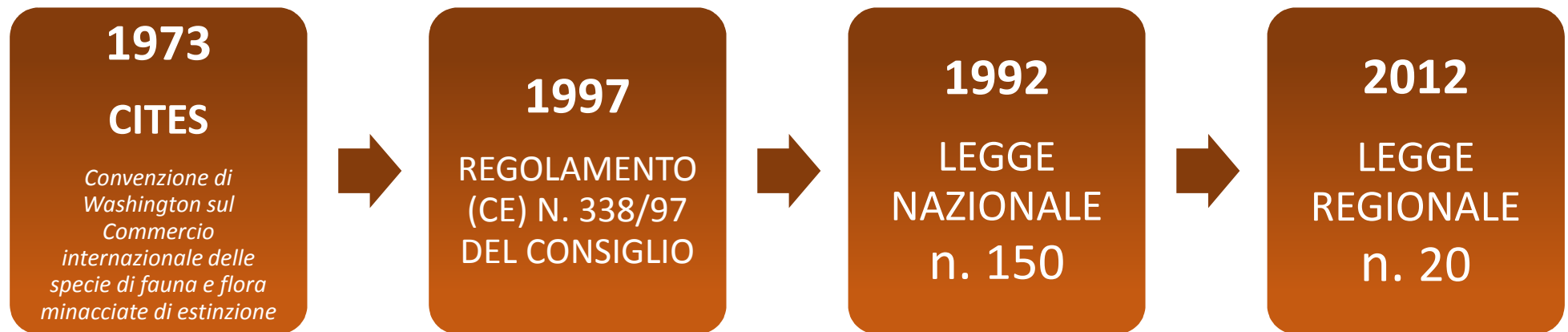
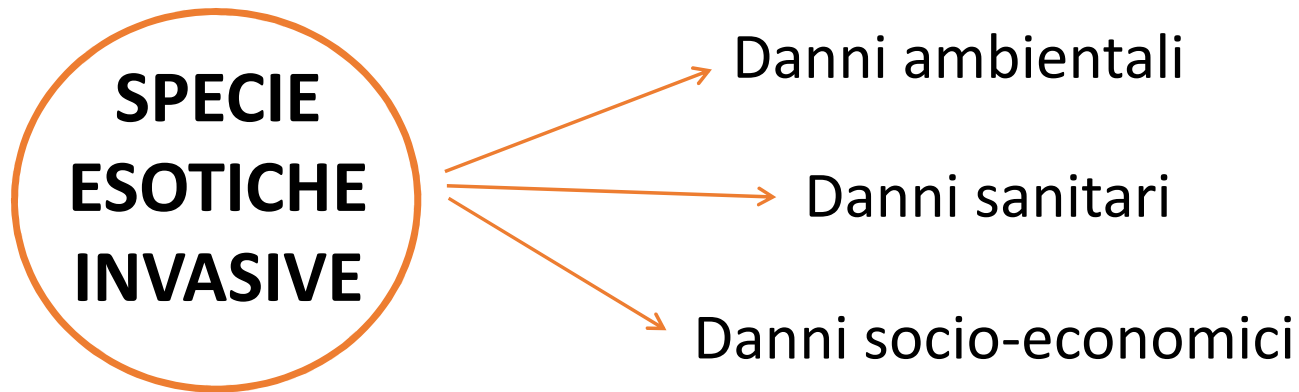
ANALISI & CURA



LIBERAZIONE



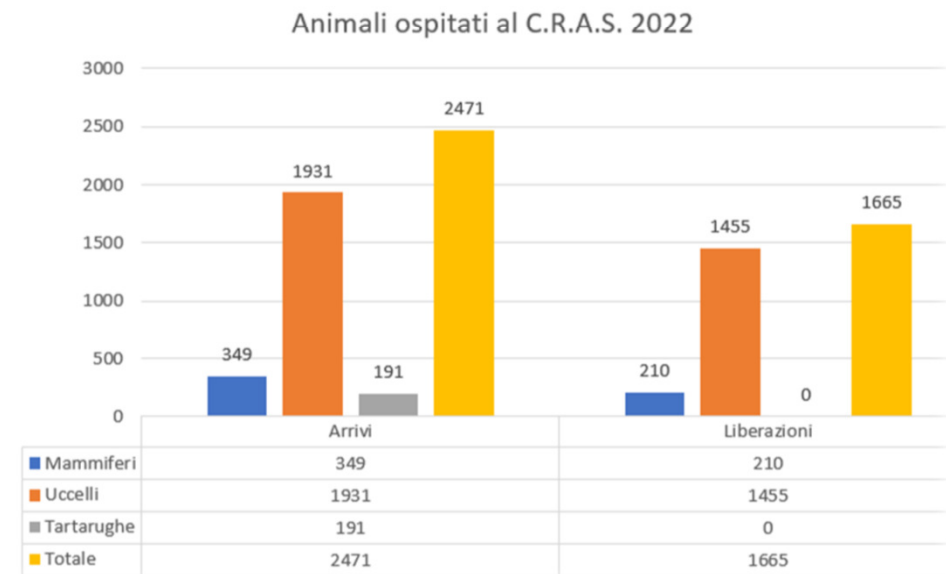
C.R.A.E.



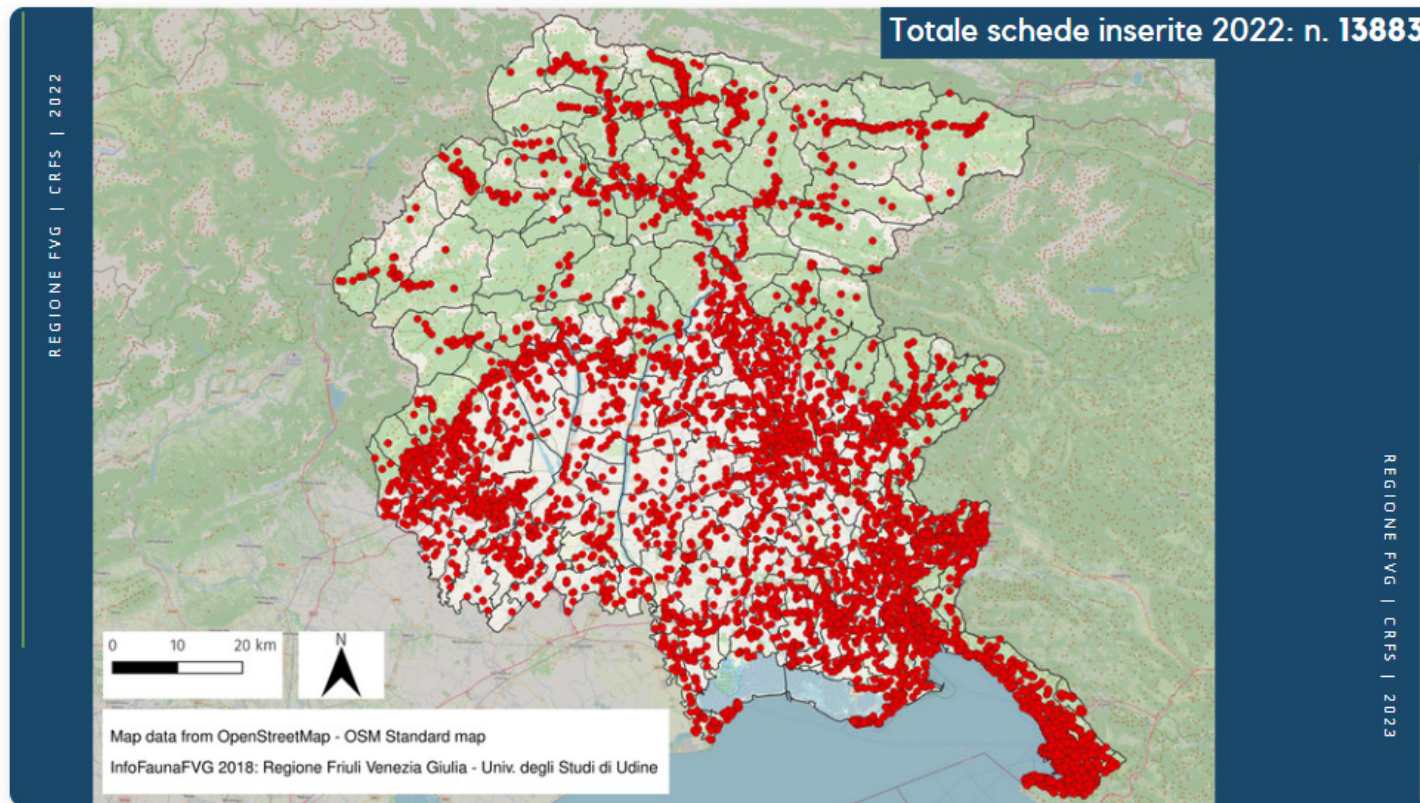
C.R.A.S. e C.R.A.E. Terranova (GO) - BARADEL



- Ambiente rurale
- Strutture adatte ad ospitare animali selvatici in difficoltà
- 70% reintroduzioni



INFOFAUNA FVG



Database informatico regionale istituito nel 2019 che contiene tutte le informazioni riguardanti la fauna selvatica (viva o morta) inserite da tutti i CRAS e da operatori che intervengono sulla fauna selvatica