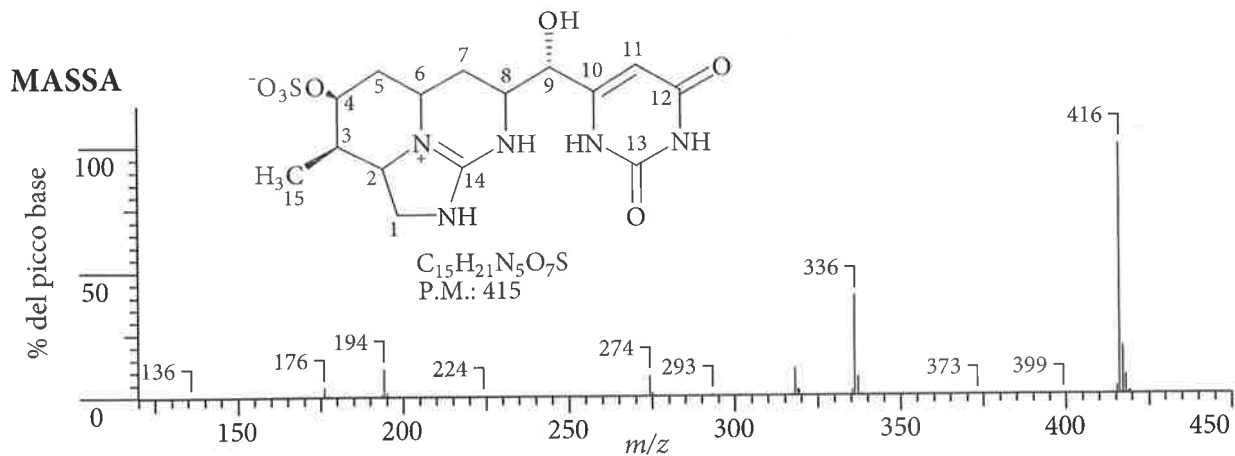
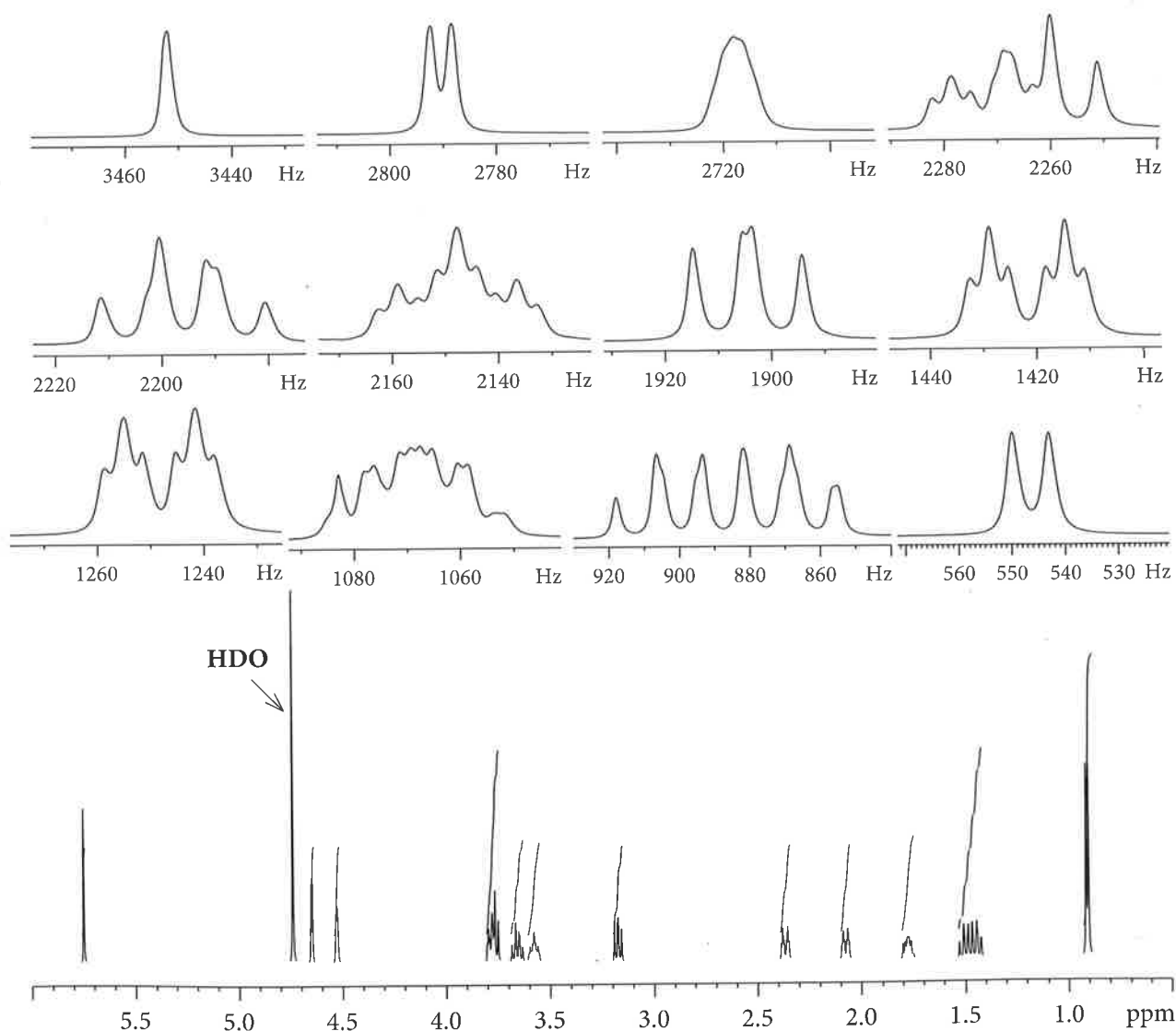


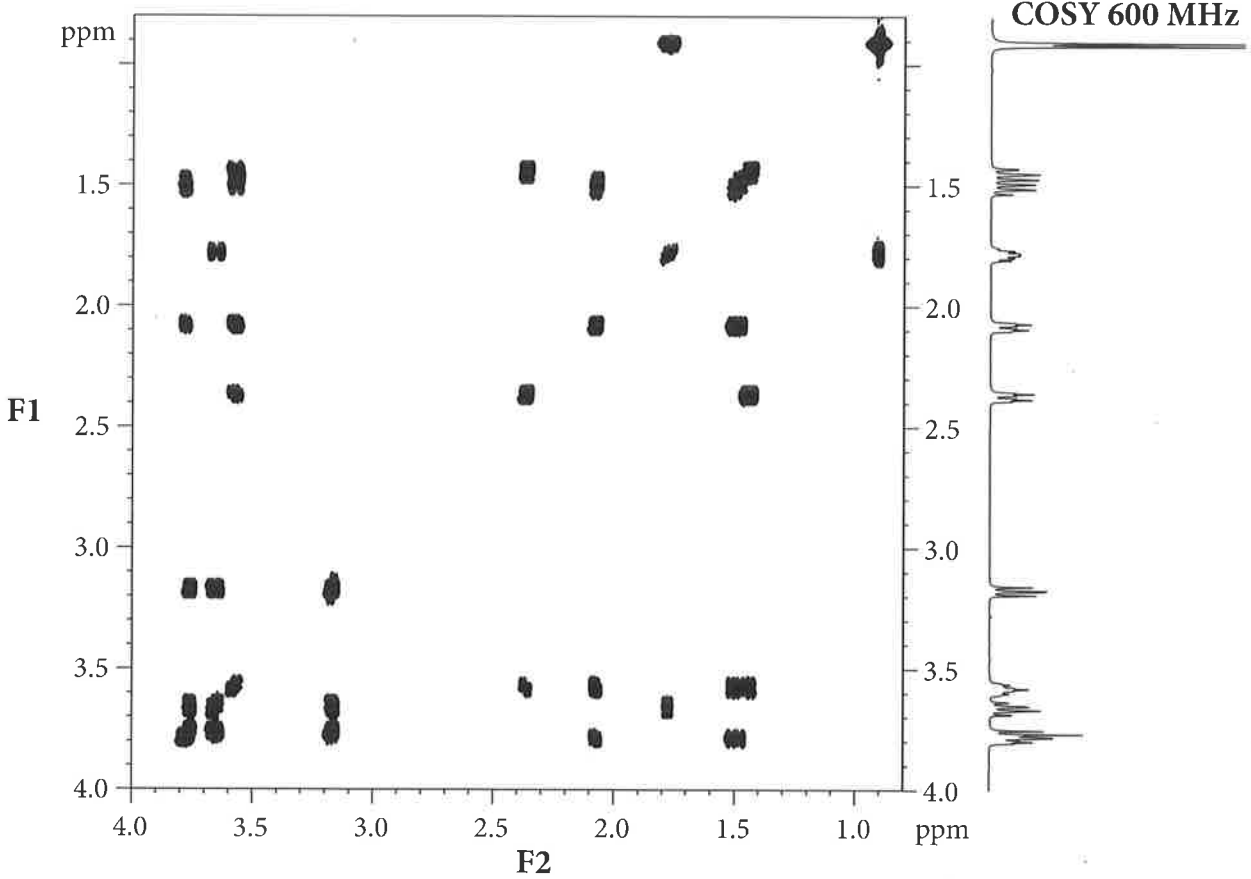
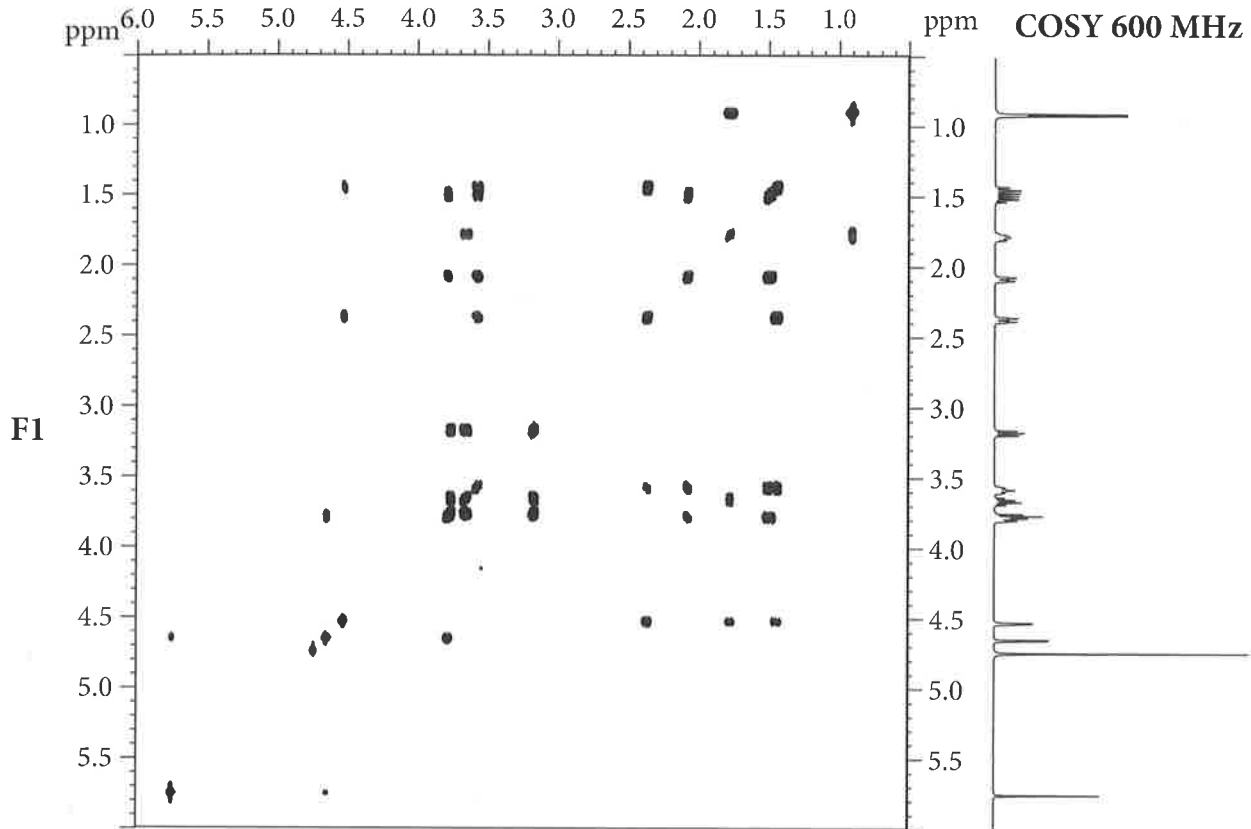
**Problema 8.37A**



**$^1H$  NMR 600 MHz in  $D_2O$**

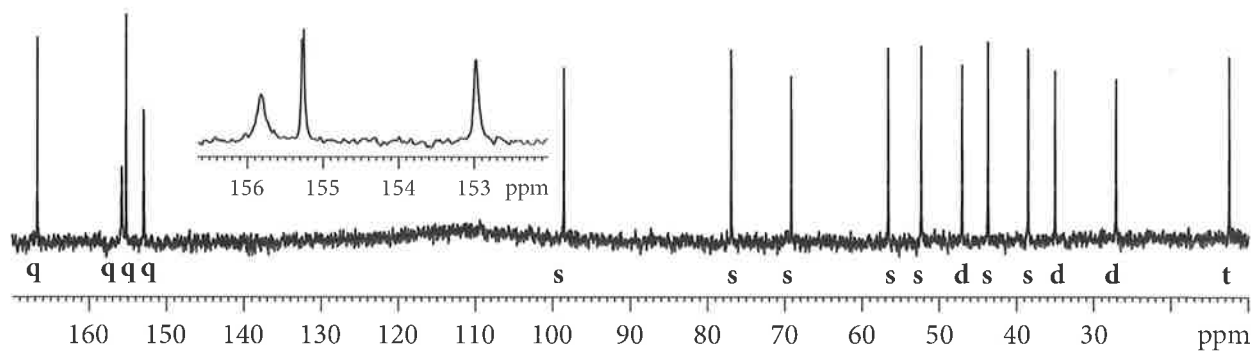


**Problema 8.37B**

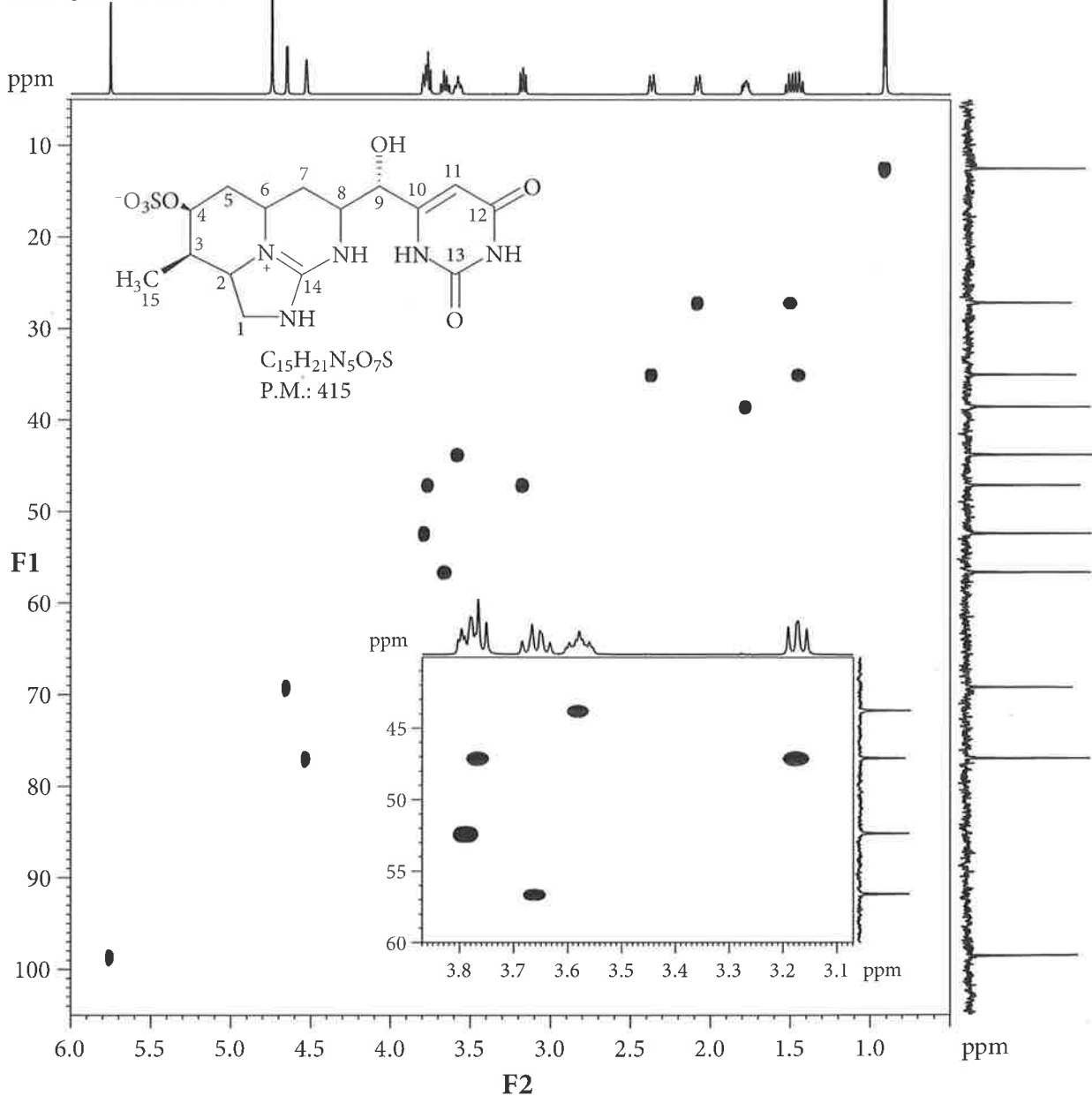


**Problema 8.37C**

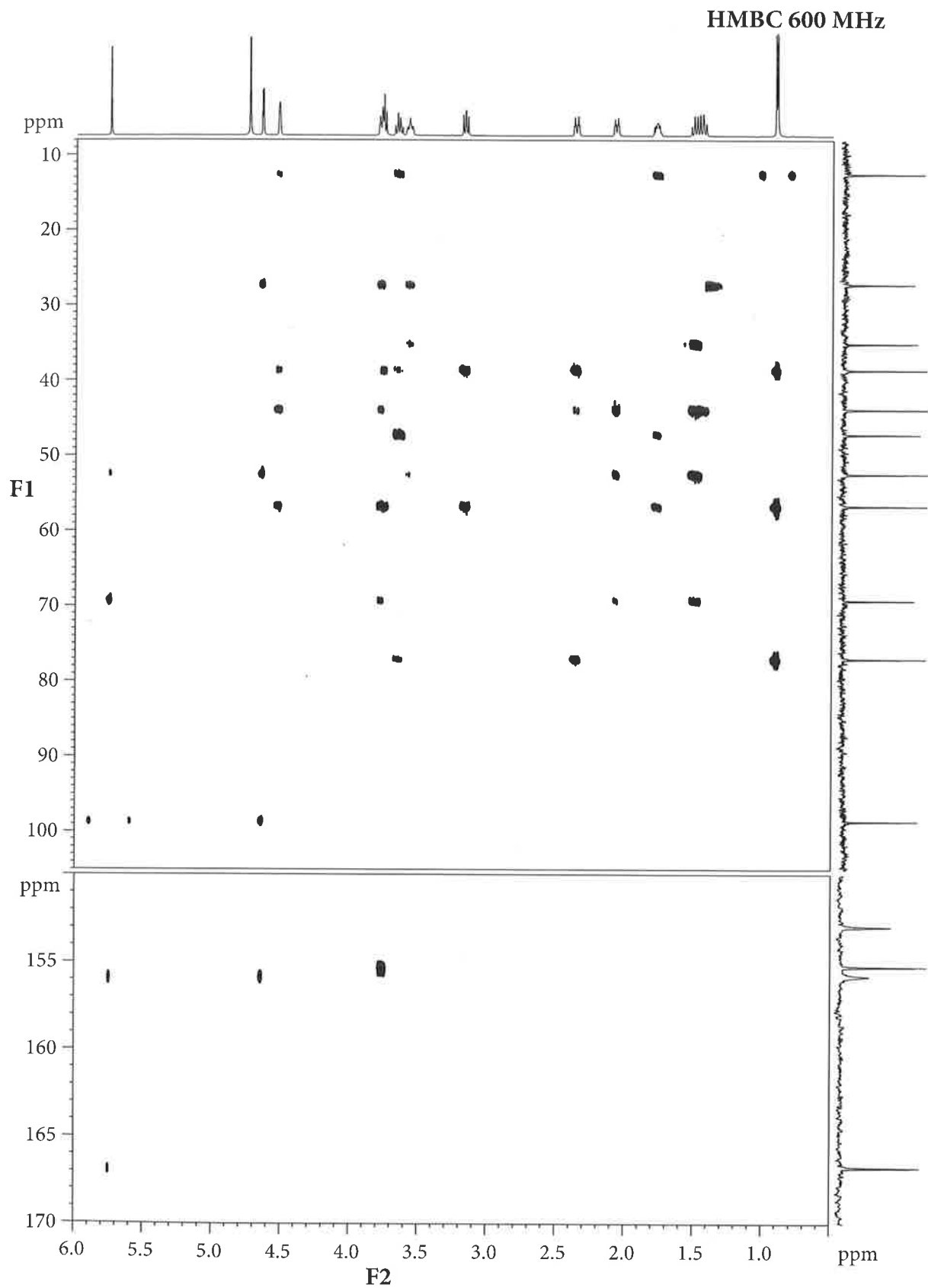
<sup>13</sup>C NMR 150.9 MHz



HMQC 600 MHz

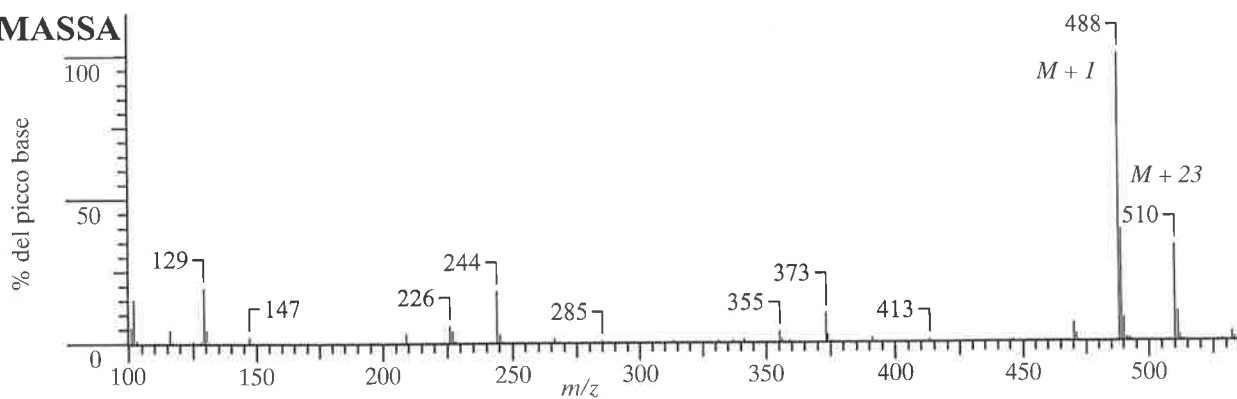


## Problema 8.37D



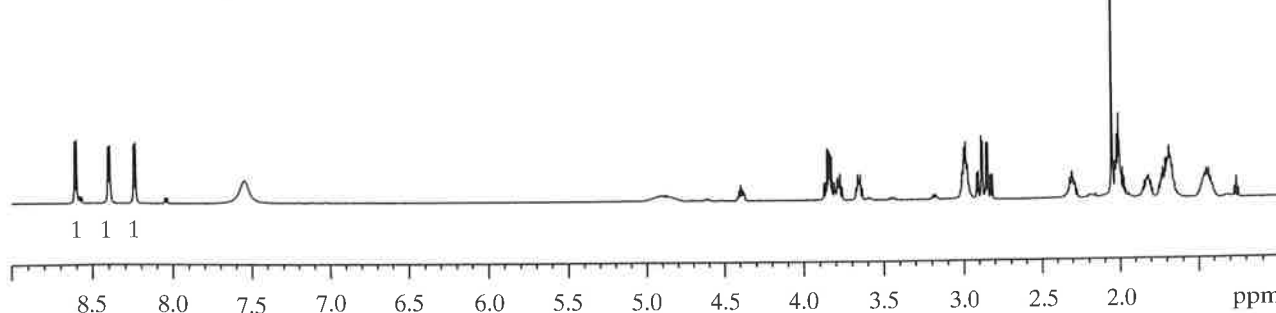
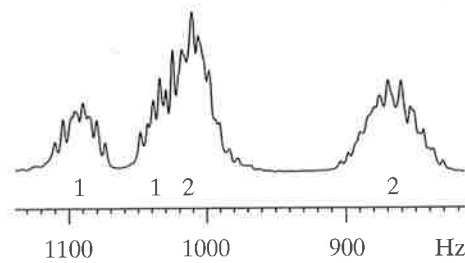
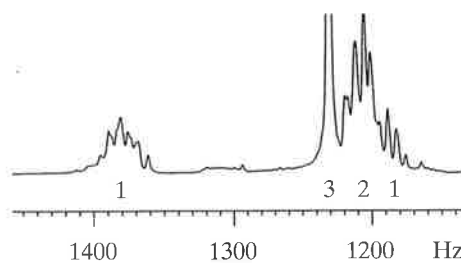
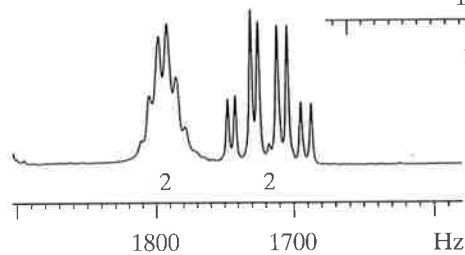
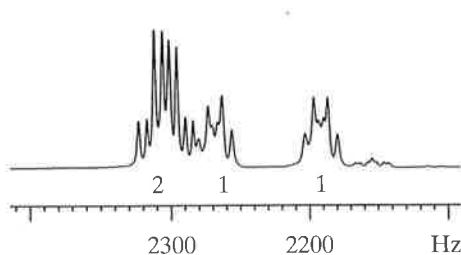
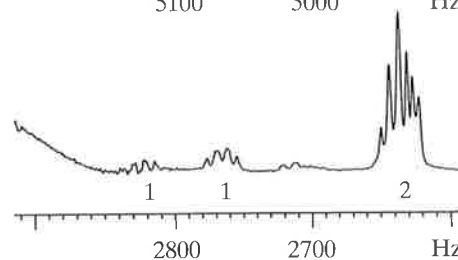
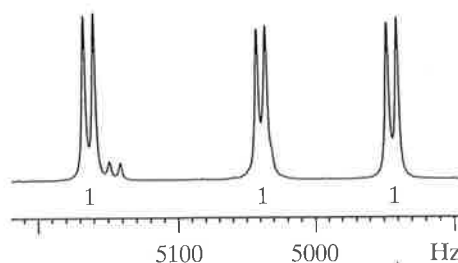
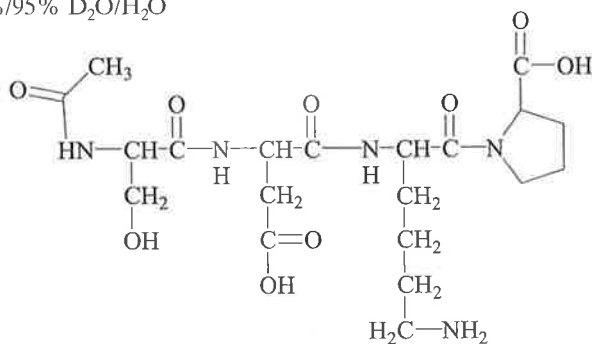
**Problema 8.38A**

**ES MASSA**

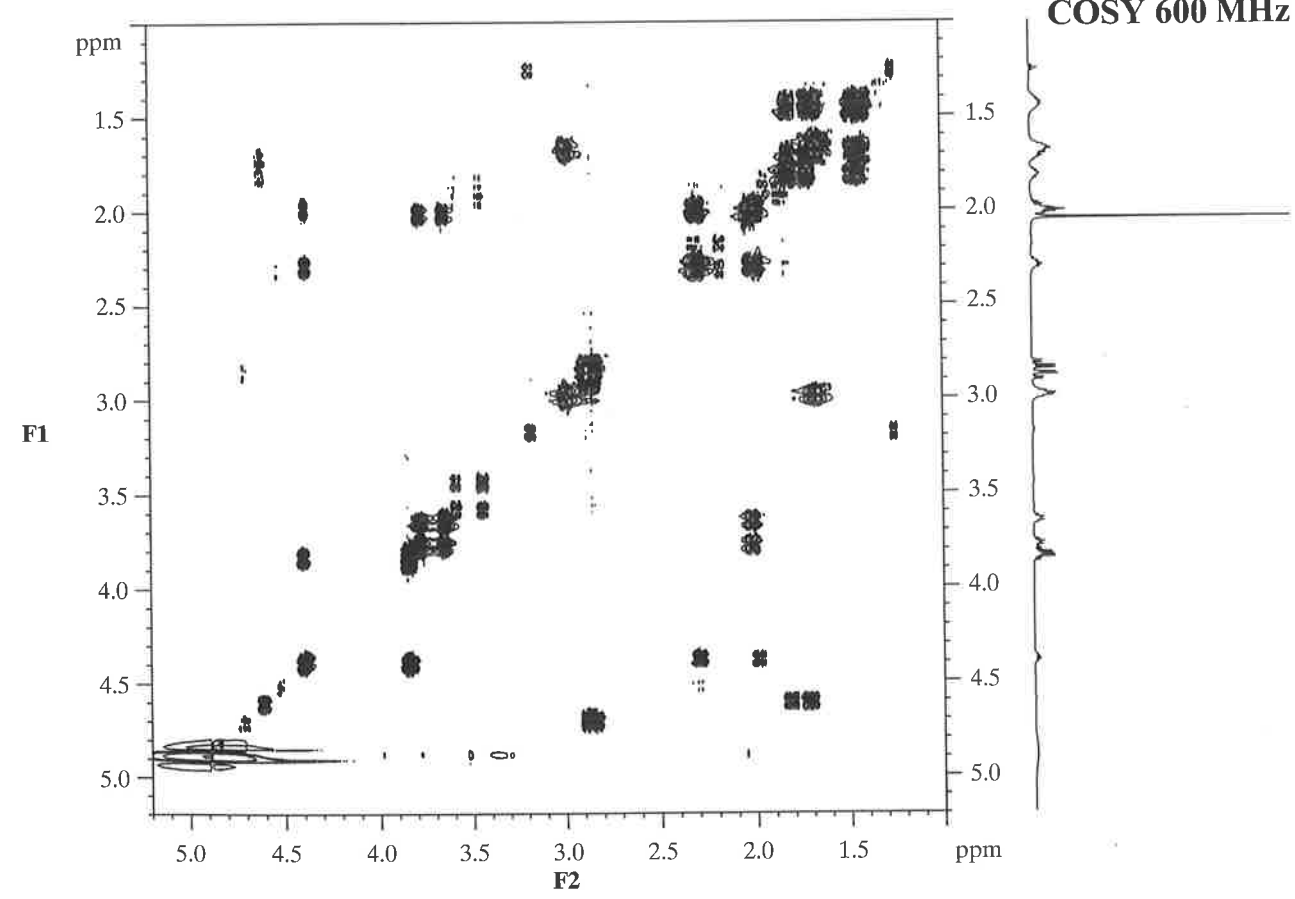
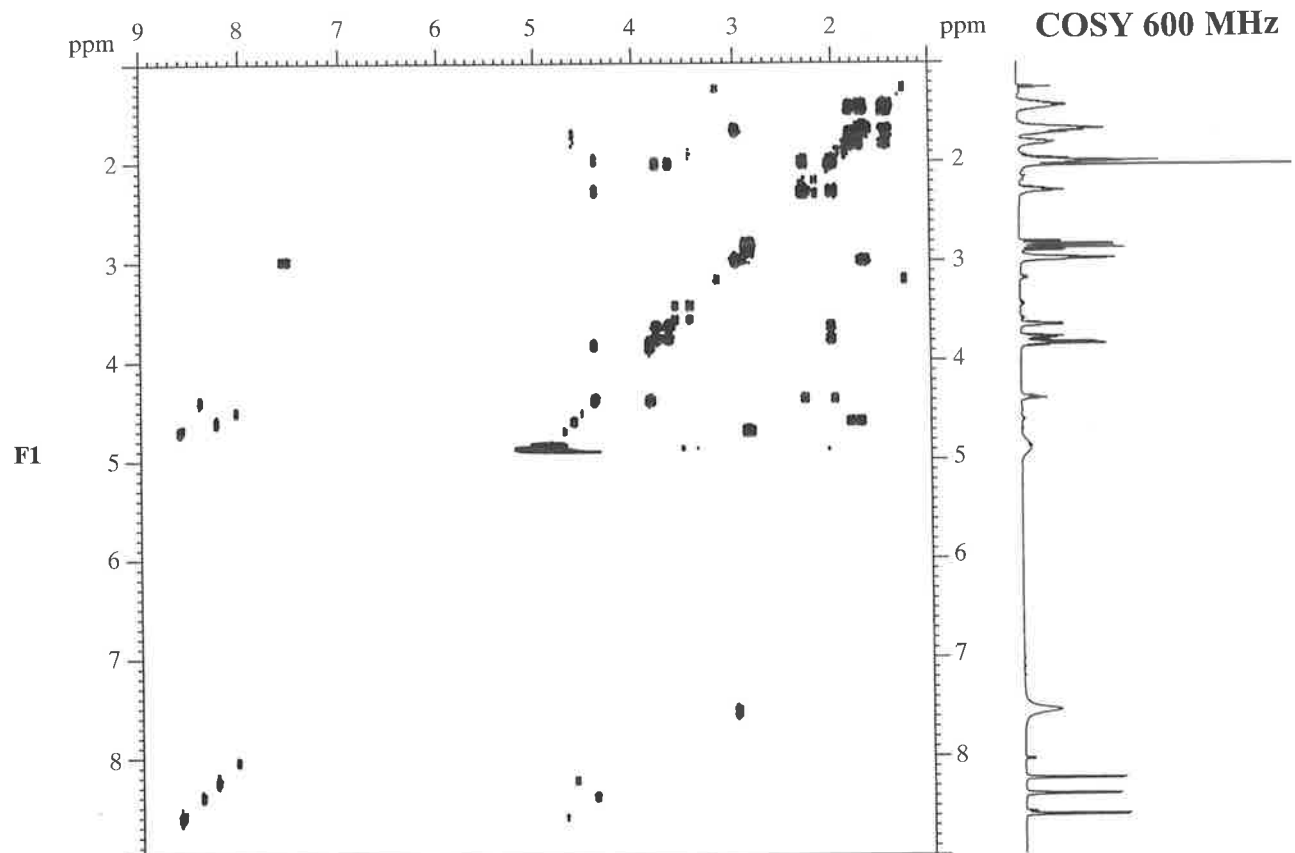


**<sup>1</sup>H NMR 600 MHz**

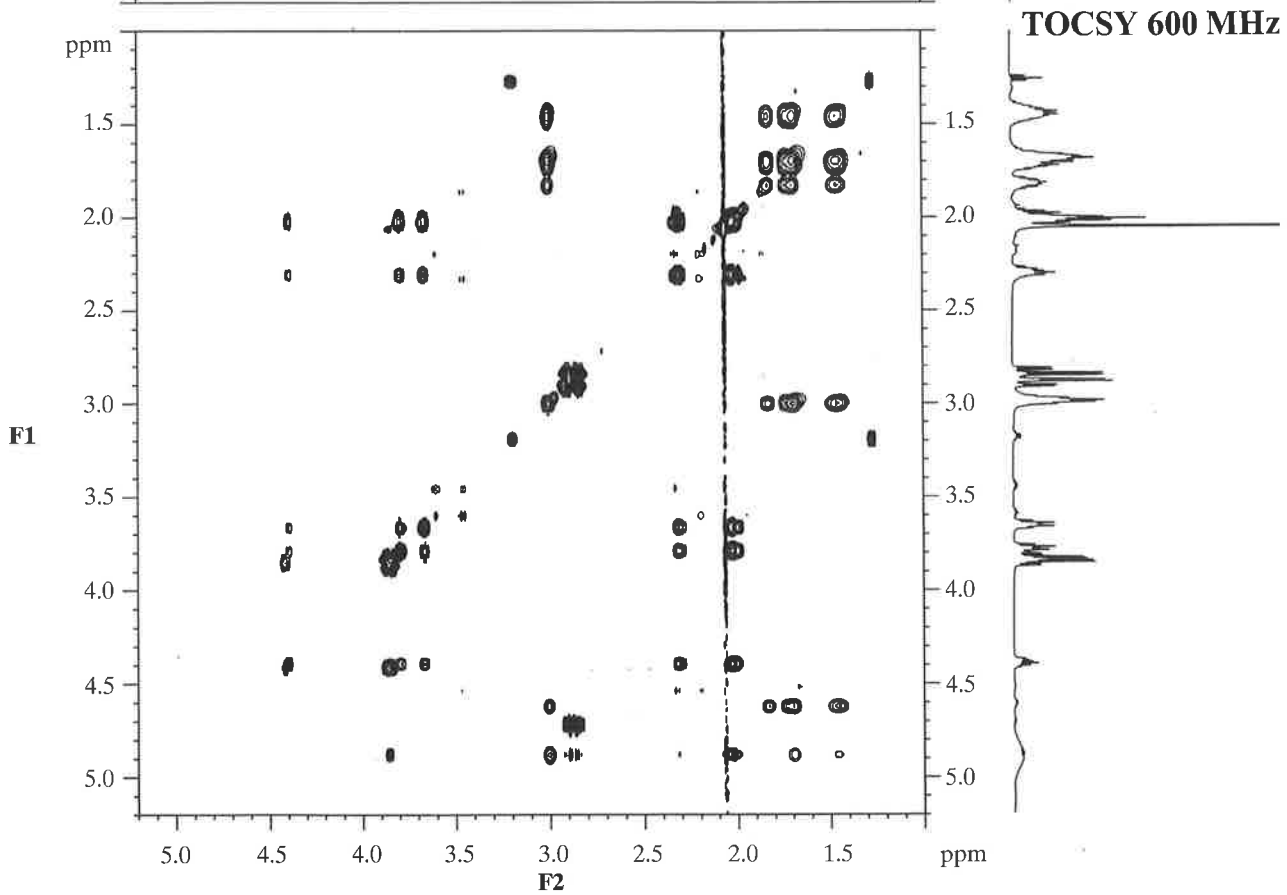
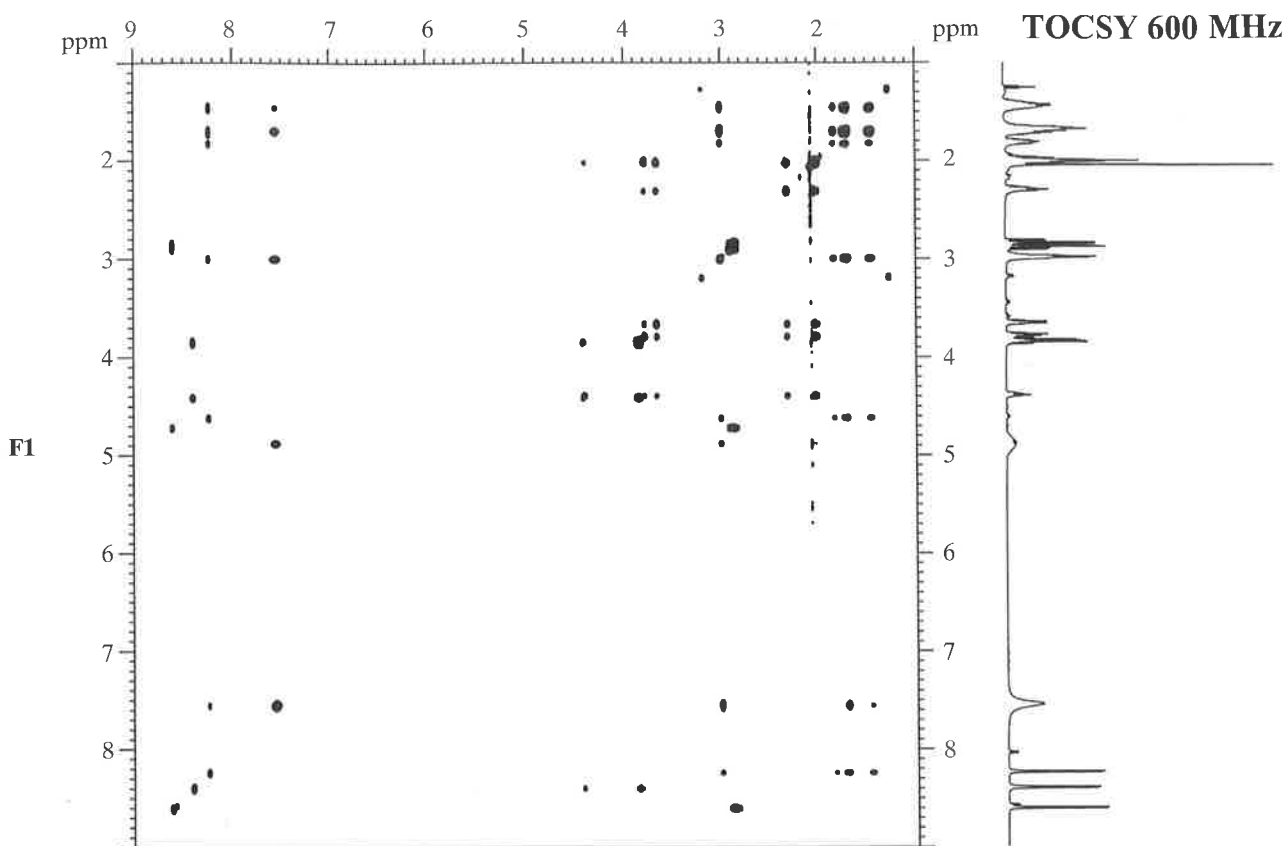
0 °C in 5%/95% D<sub>2</sub>O/H<sub>2</sub>O



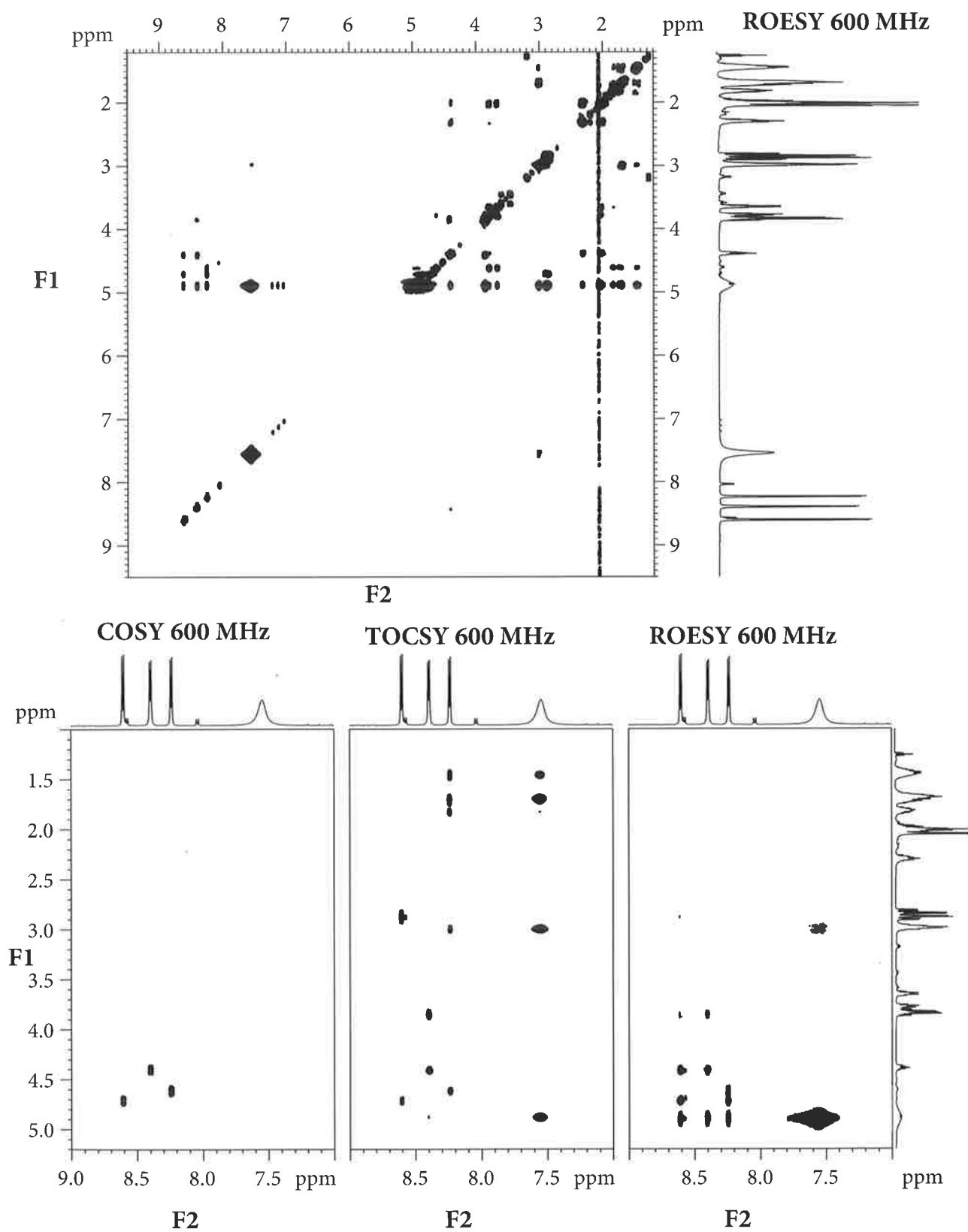
**Problema 8.38B**



**Problema 8.38C**



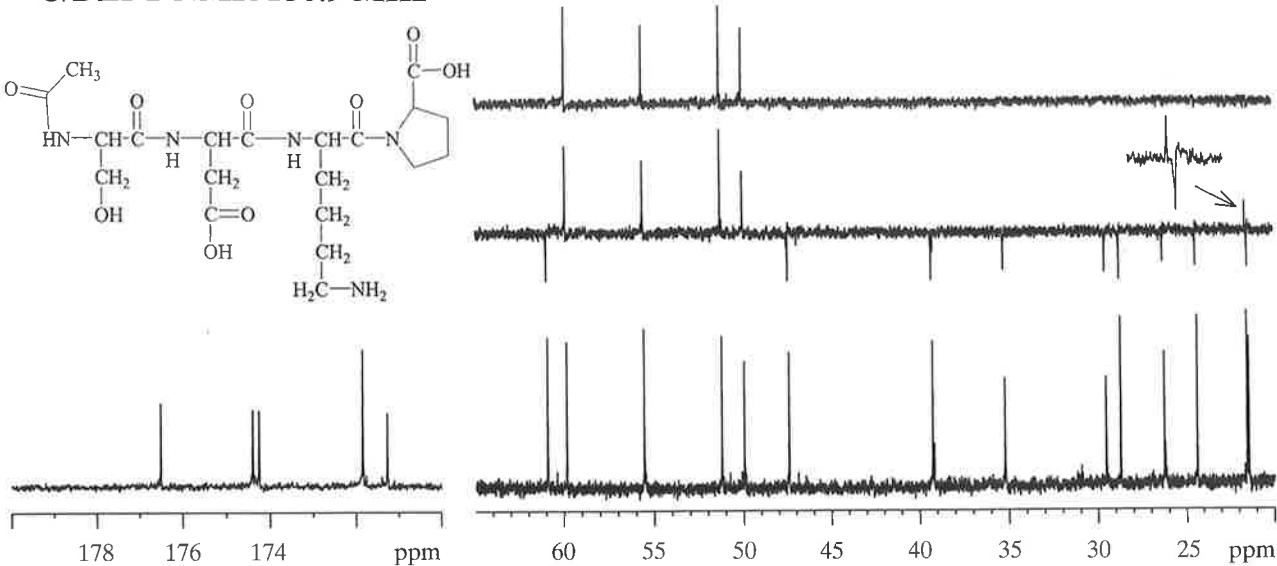
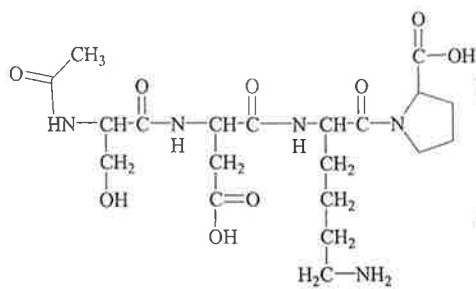
**Problema 8.38D**



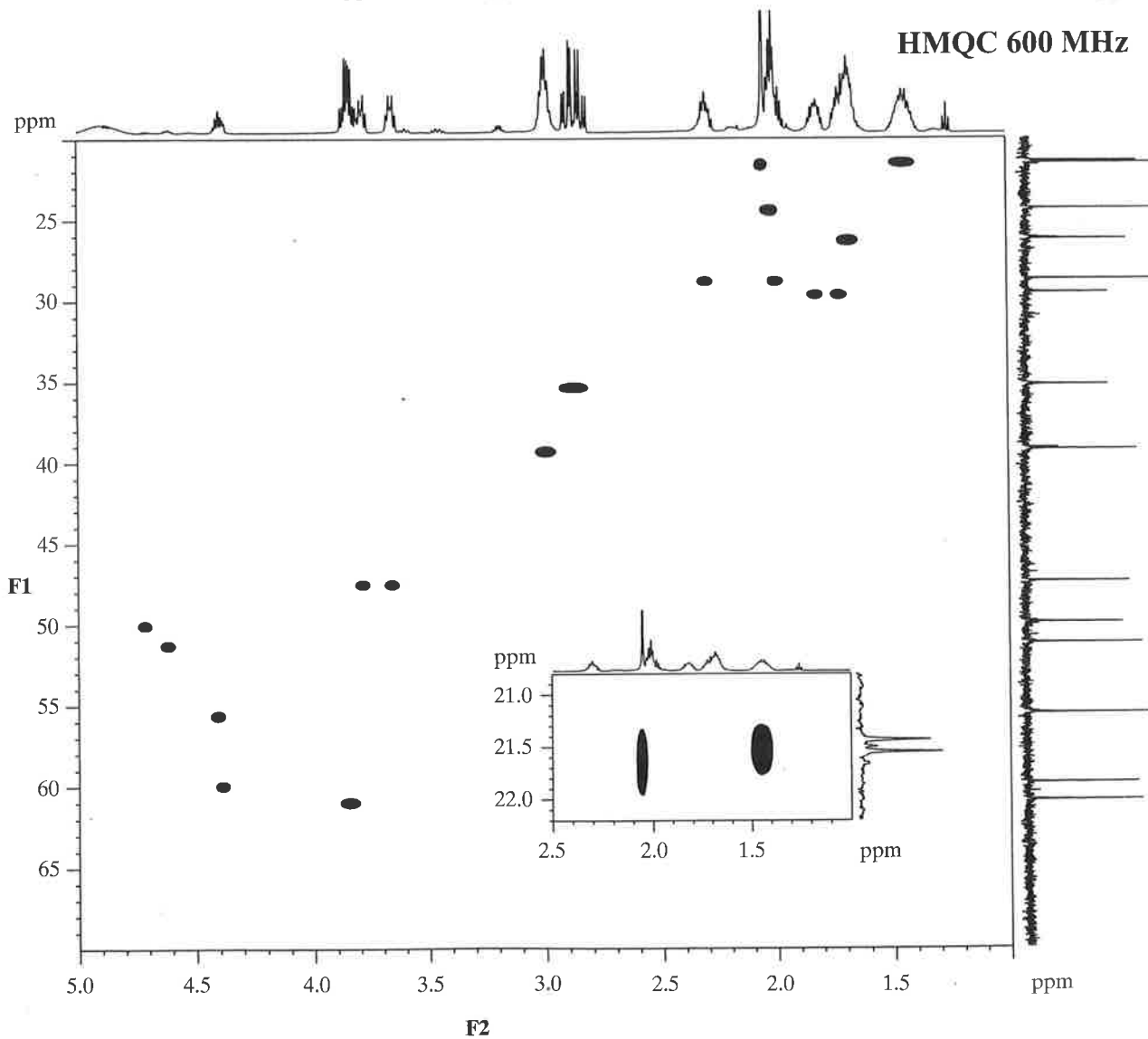


**Problema 8.38E**

<sup>13</sup>C/DEPT NMR 150.9 MHz

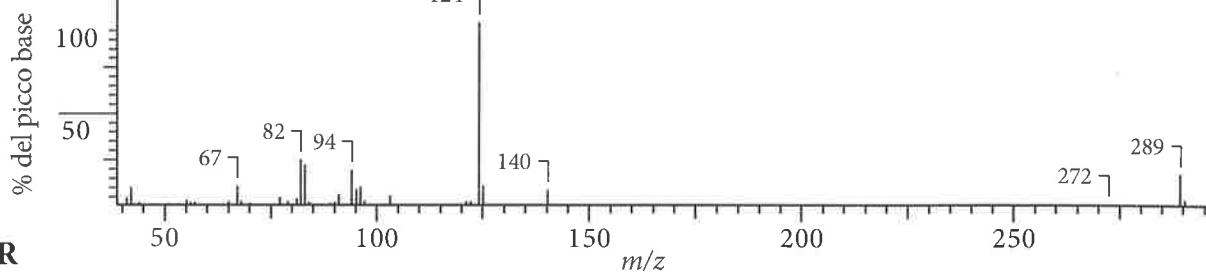


**HMQC 600 MHz**

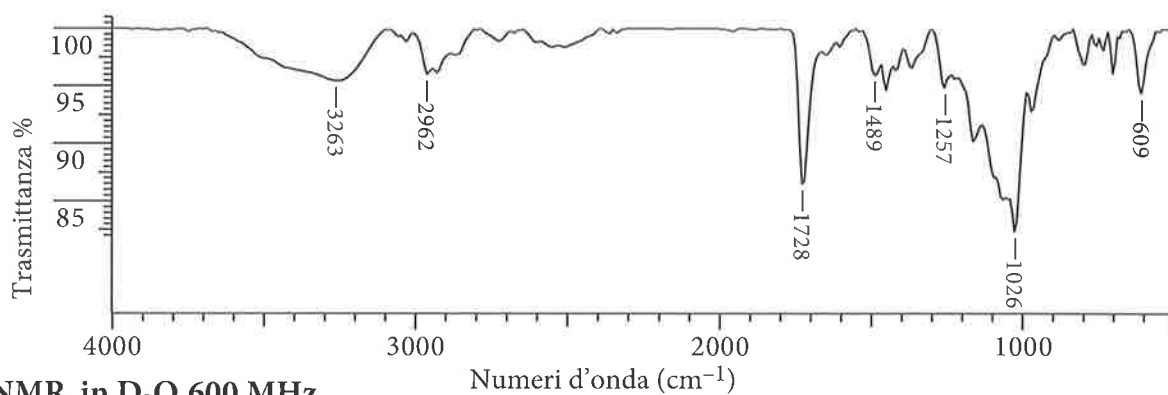
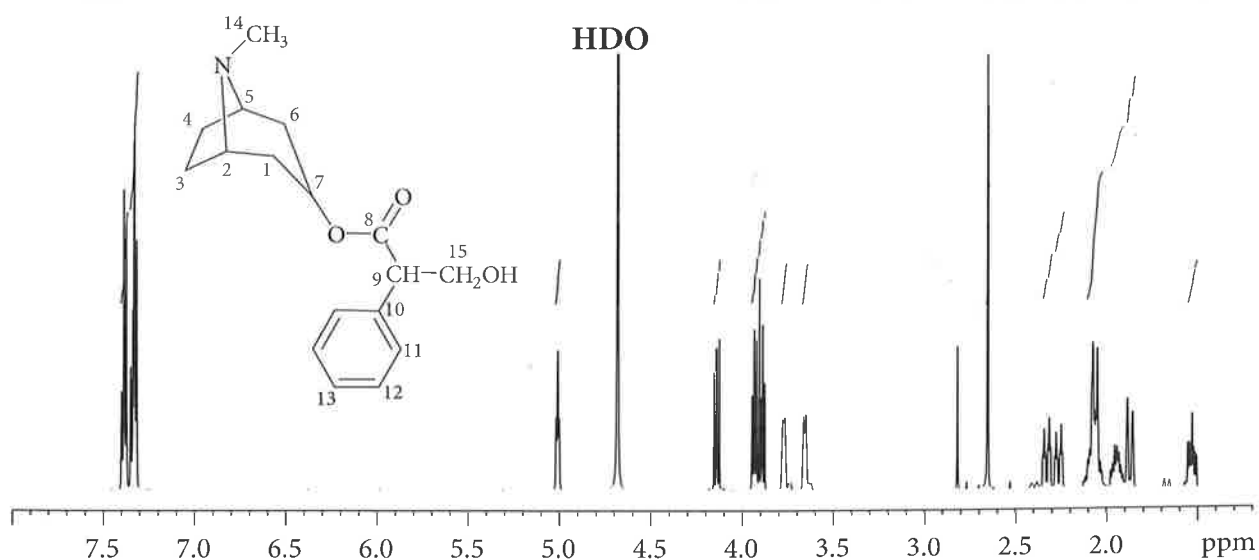
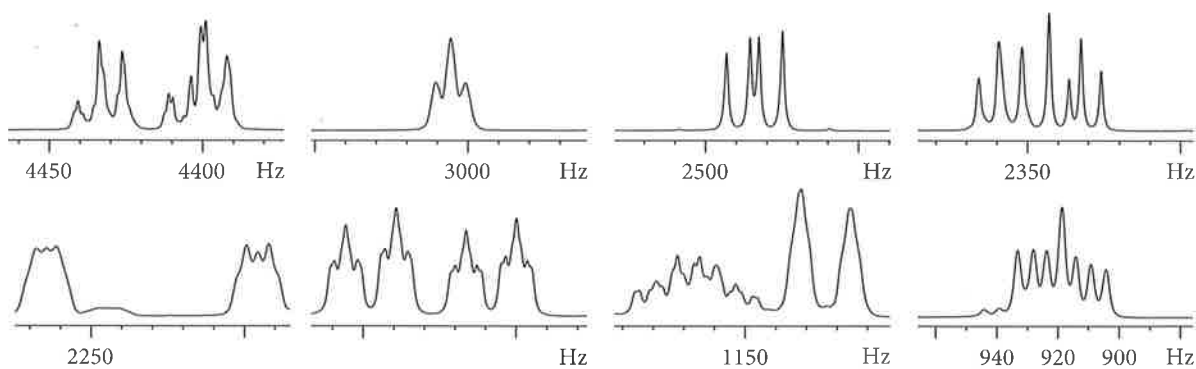


## Problema 8.43A

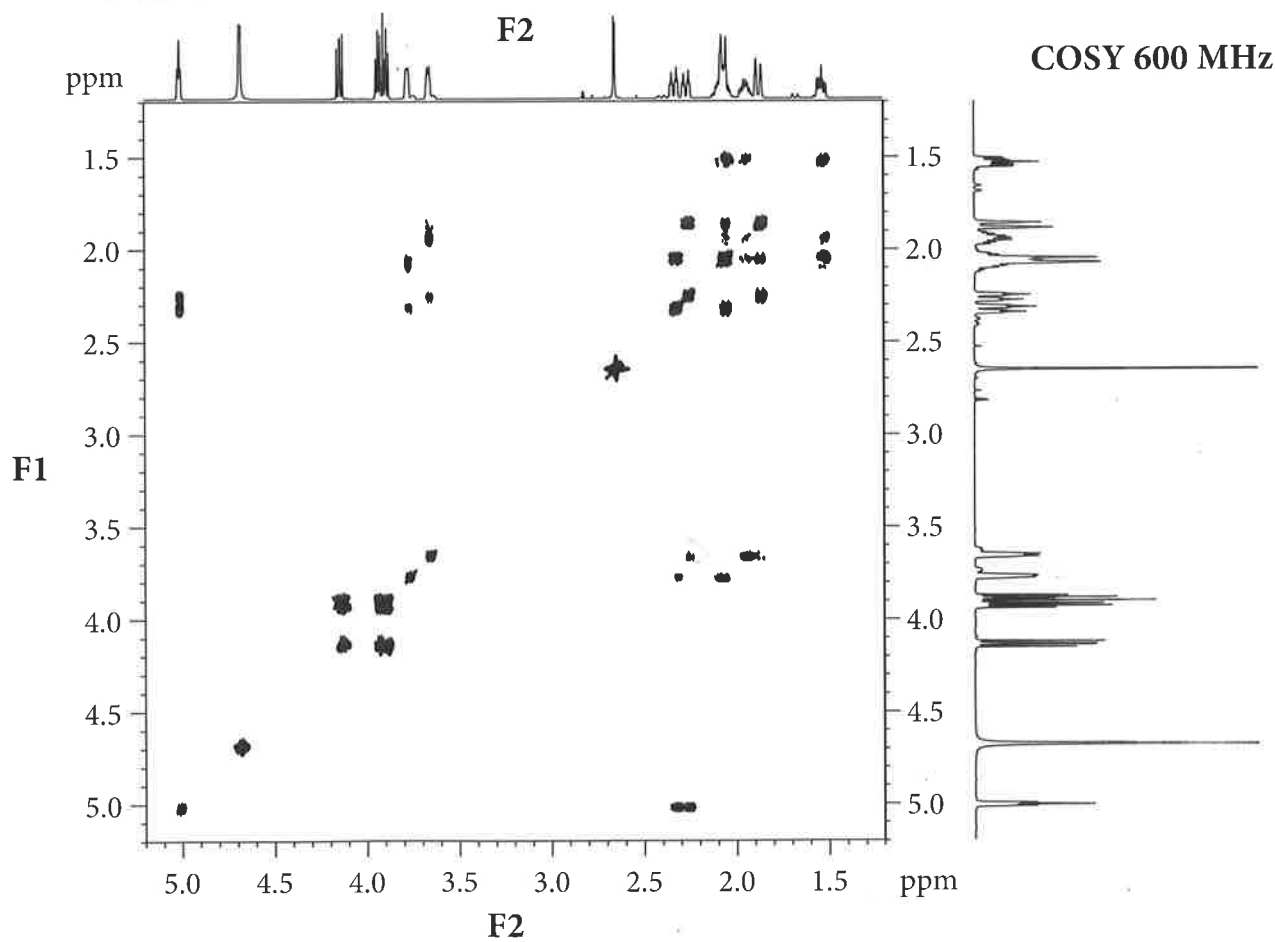
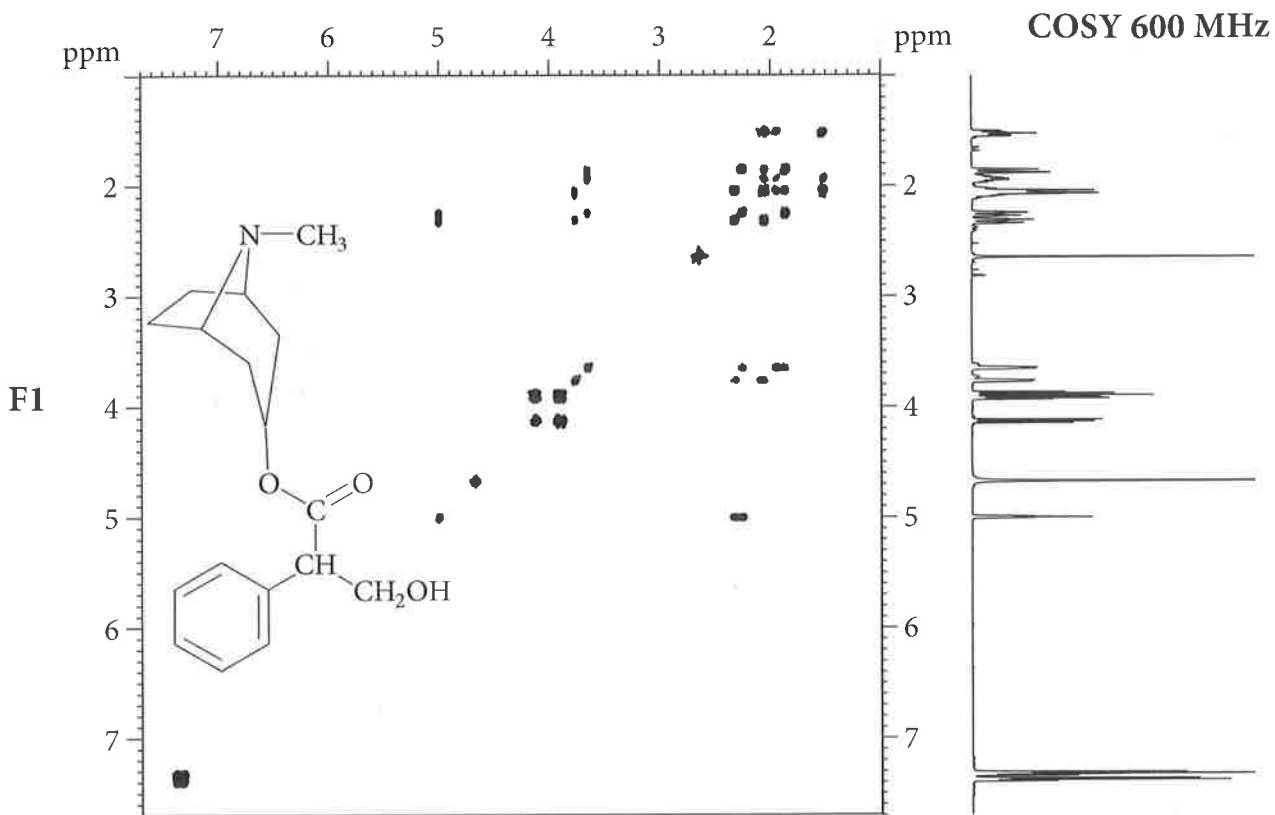
MASSA



IR

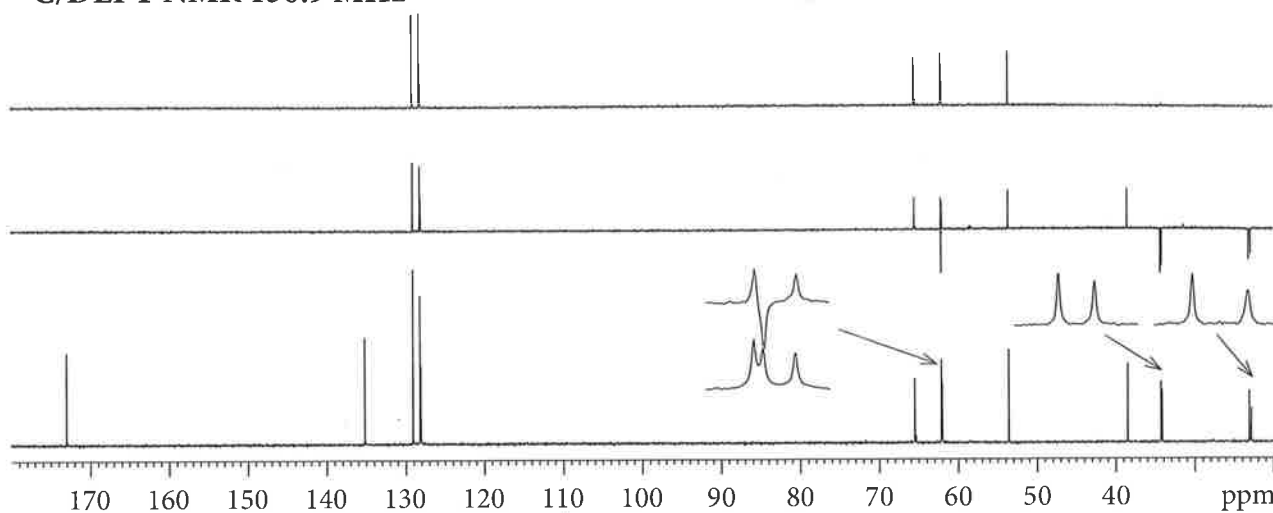
 $^1\text{H}$  NMR in  $\text{D}_2\text{O}$  600 MHz

**Problema 8.43B**

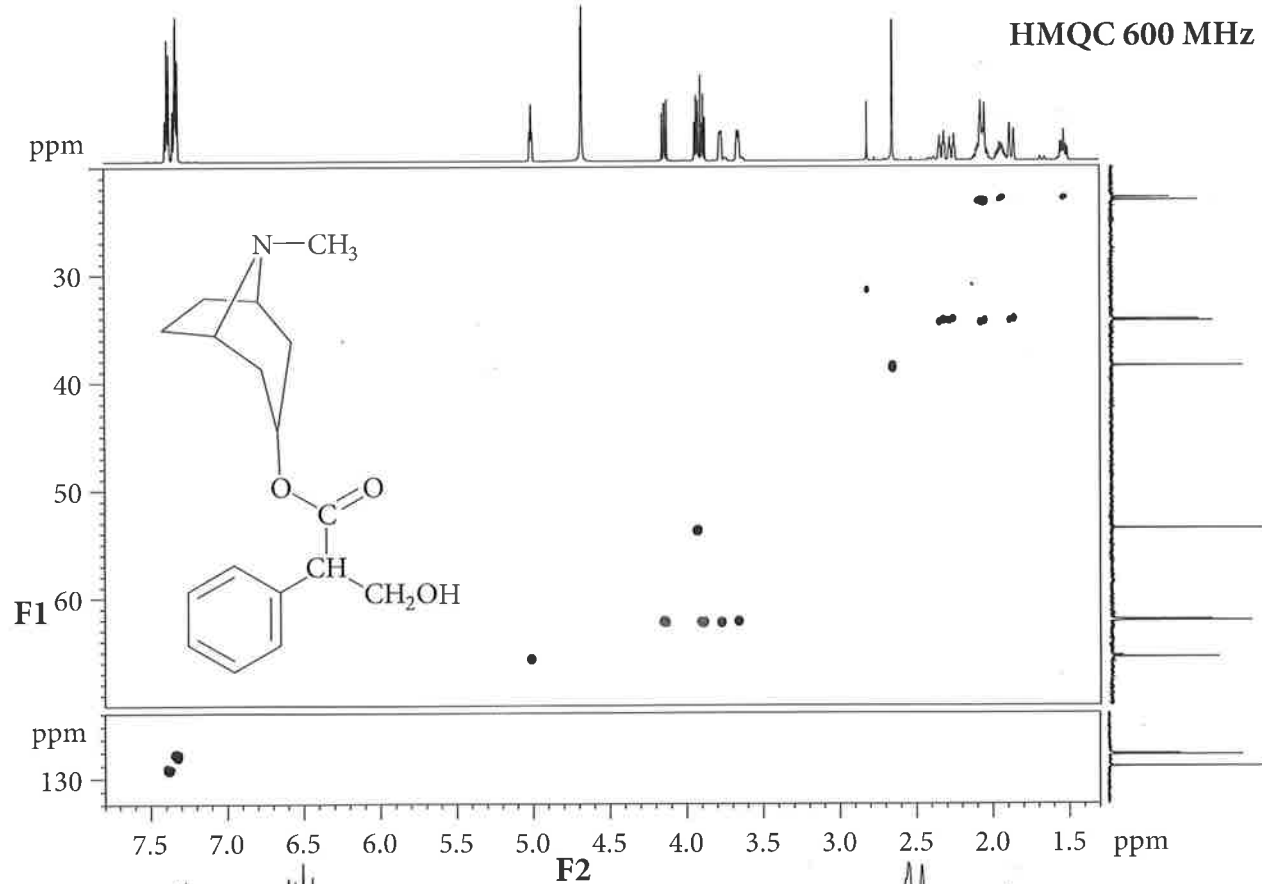


**Problema 8.43C**

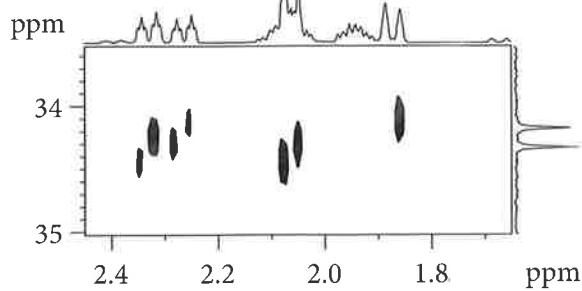
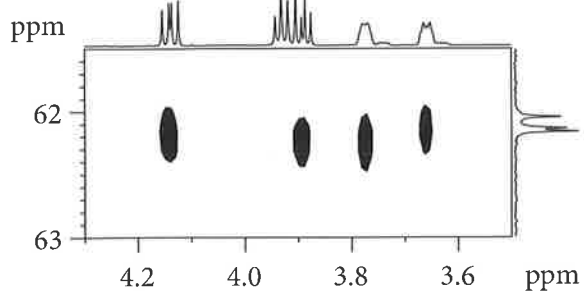
<sup>13</sup>C/DEPT NMR 150.9 MHz



HMQC 600 MHz



F2



## Problema 8.43D

HMBC 600 MHz

