

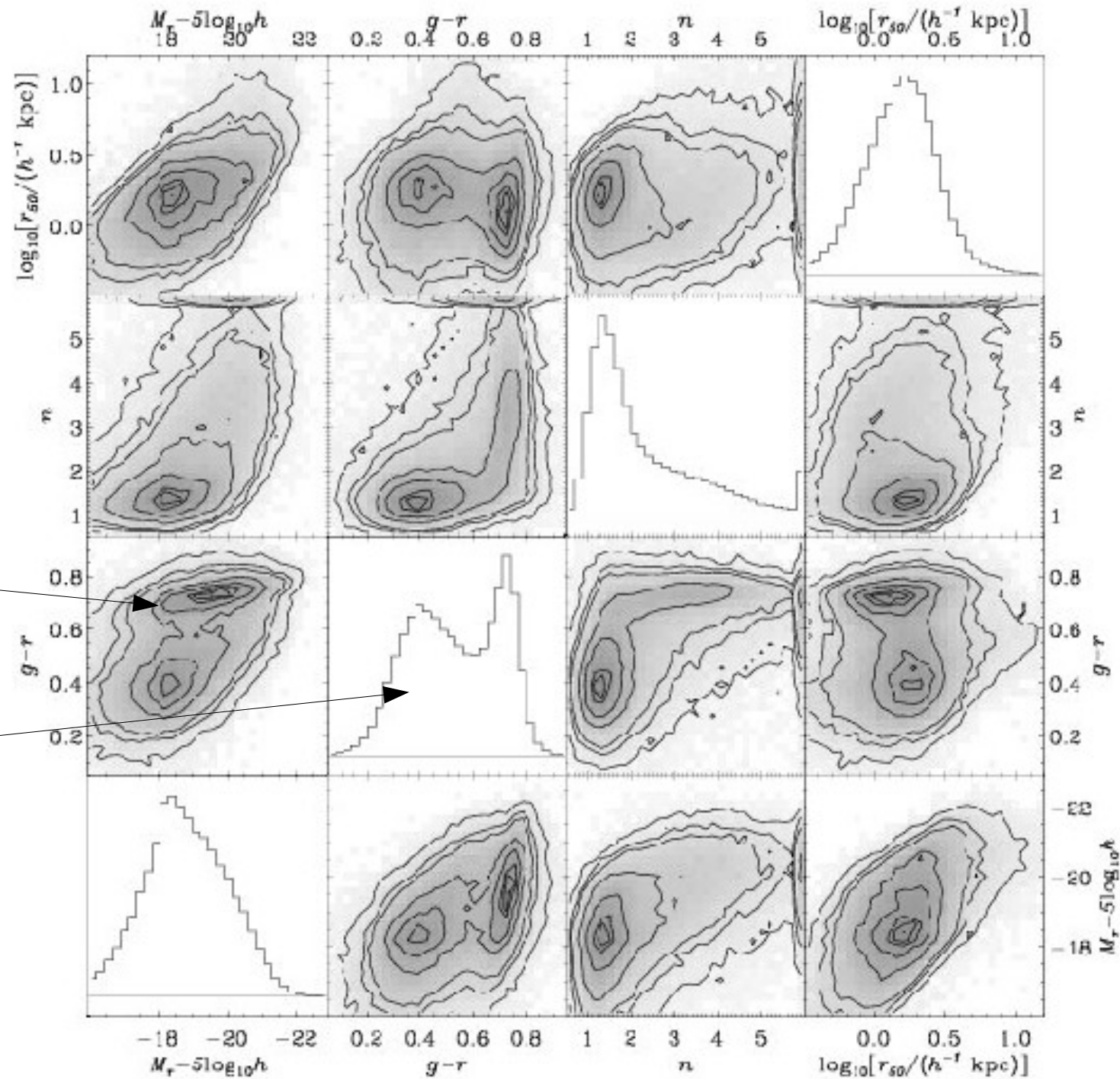
Optical
broad band
Properties.

proxy for morpho

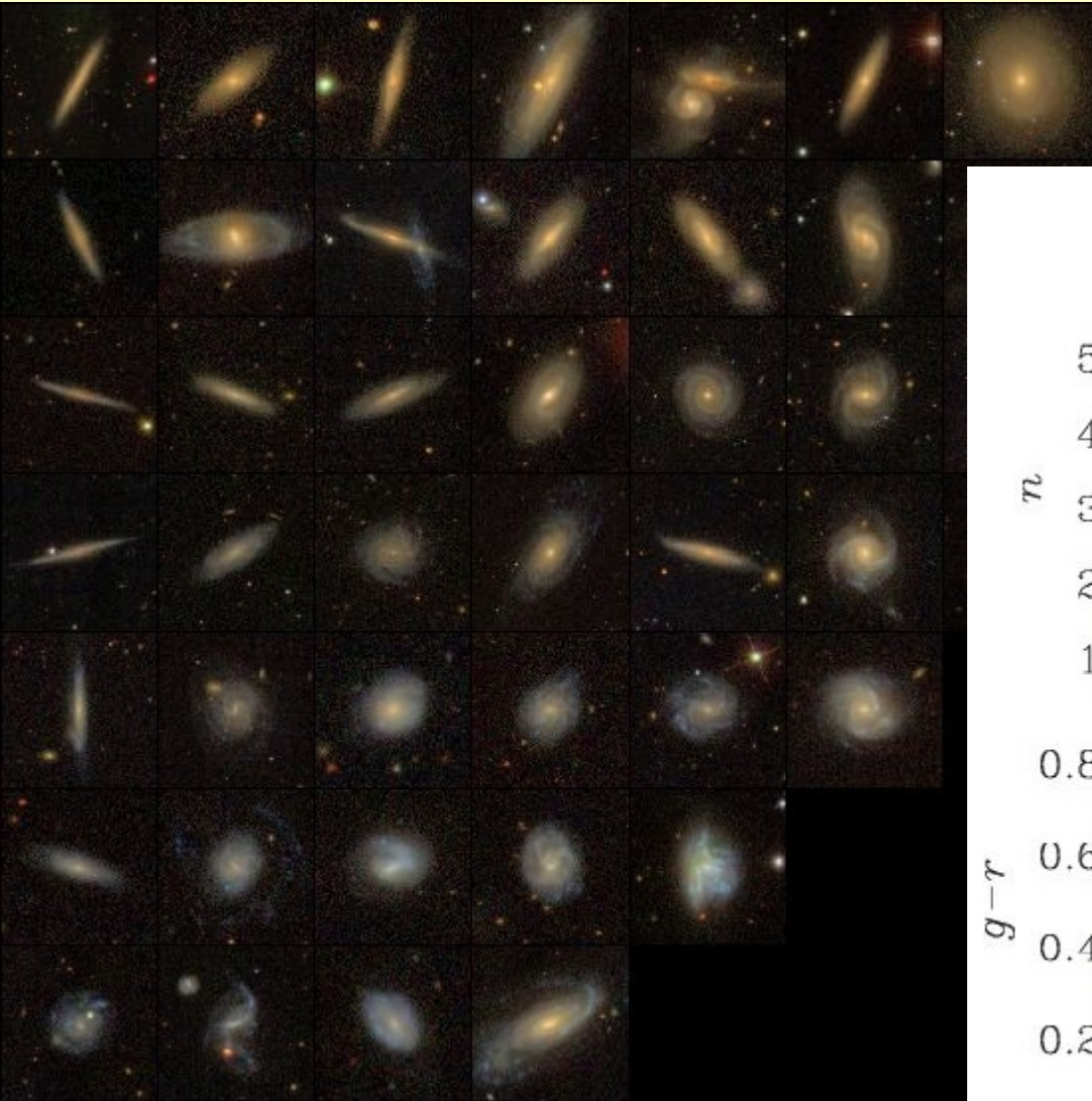
Color-magnitude
Relation

Color bimodality

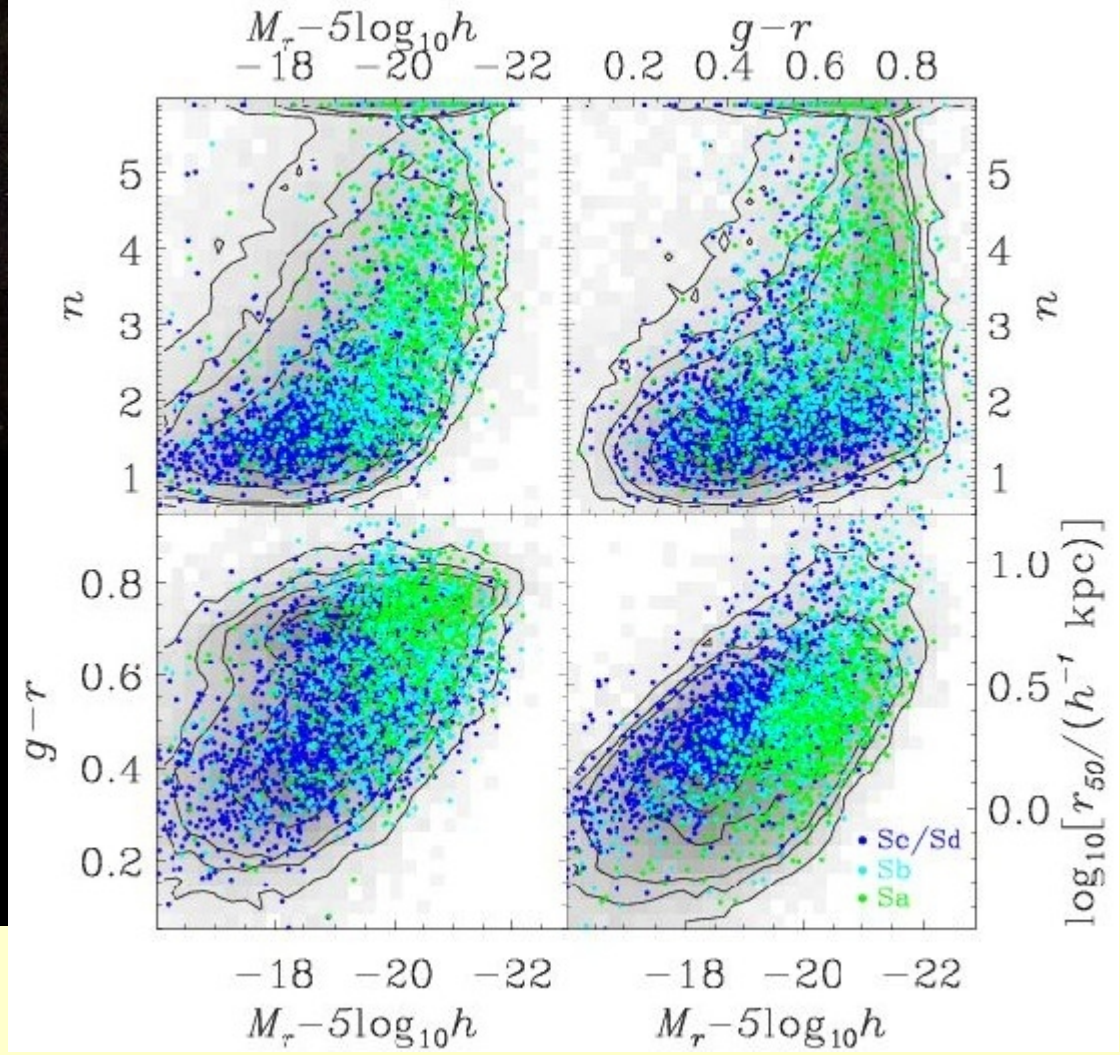
Credit to
Blanton &
Moustakas



Spiral galaxies

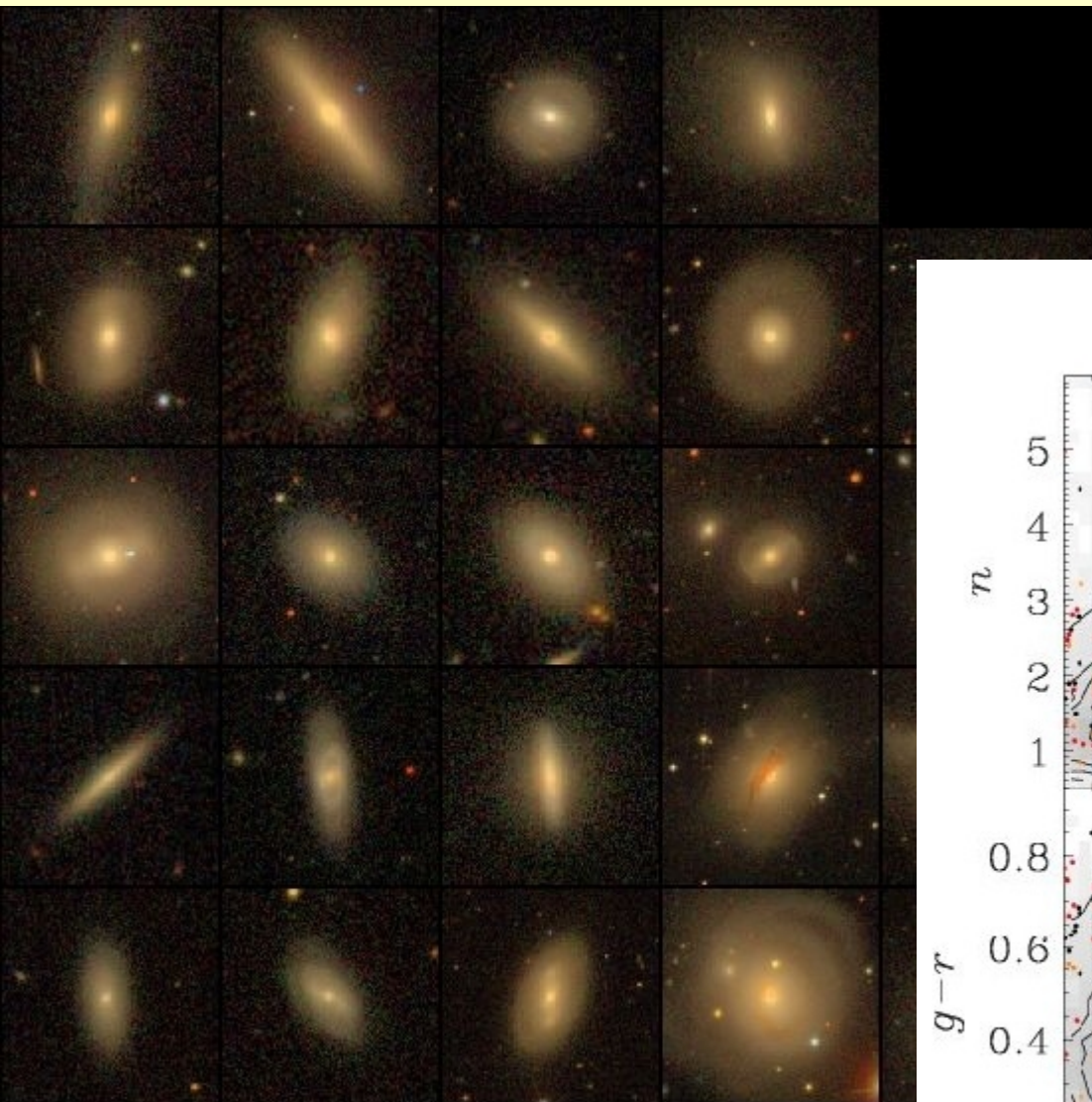


Differences within the sequence

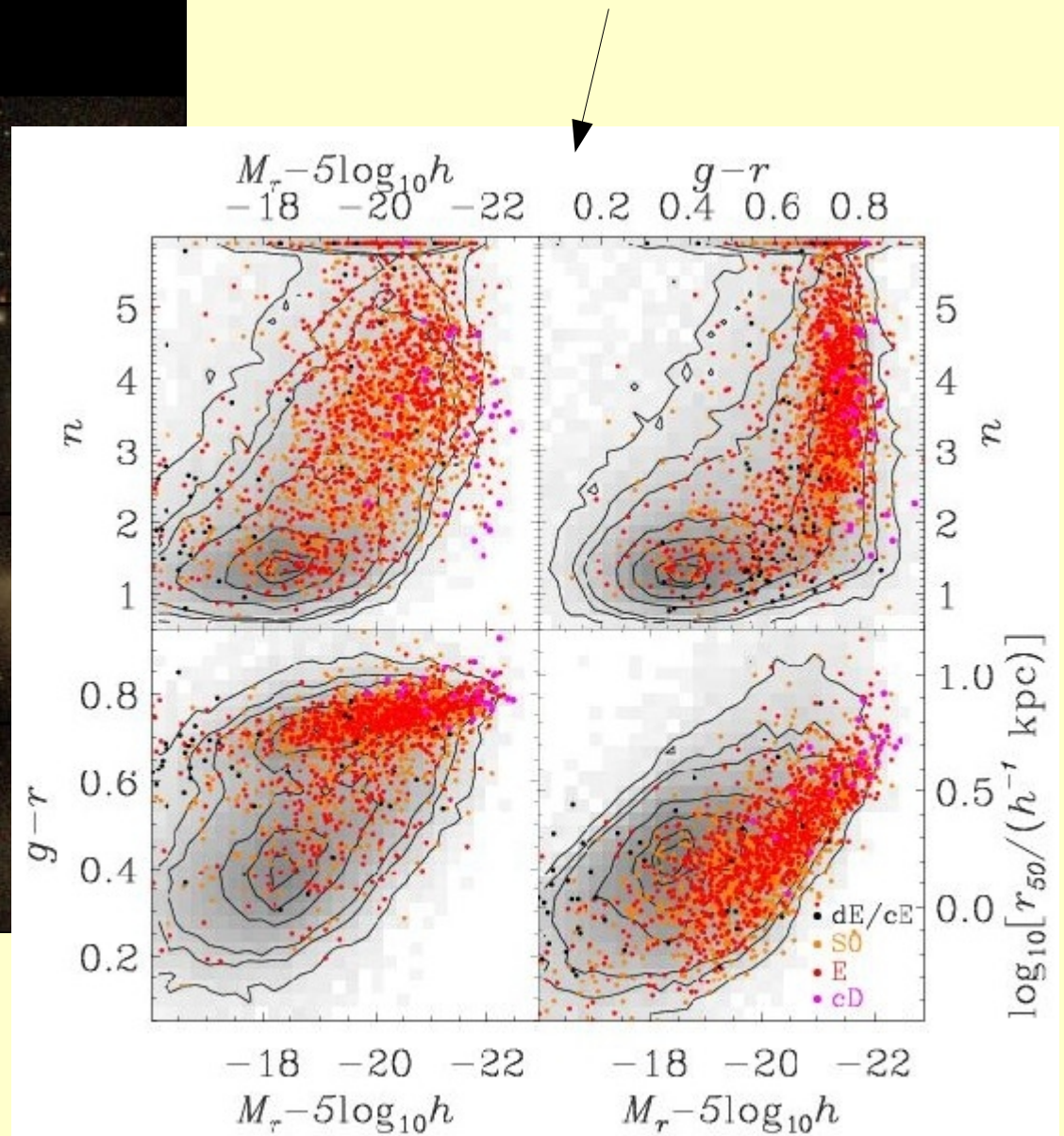


Bulges vs. pseudobulges, atomic gas, anemic galaxies, dust...

Lenticulars



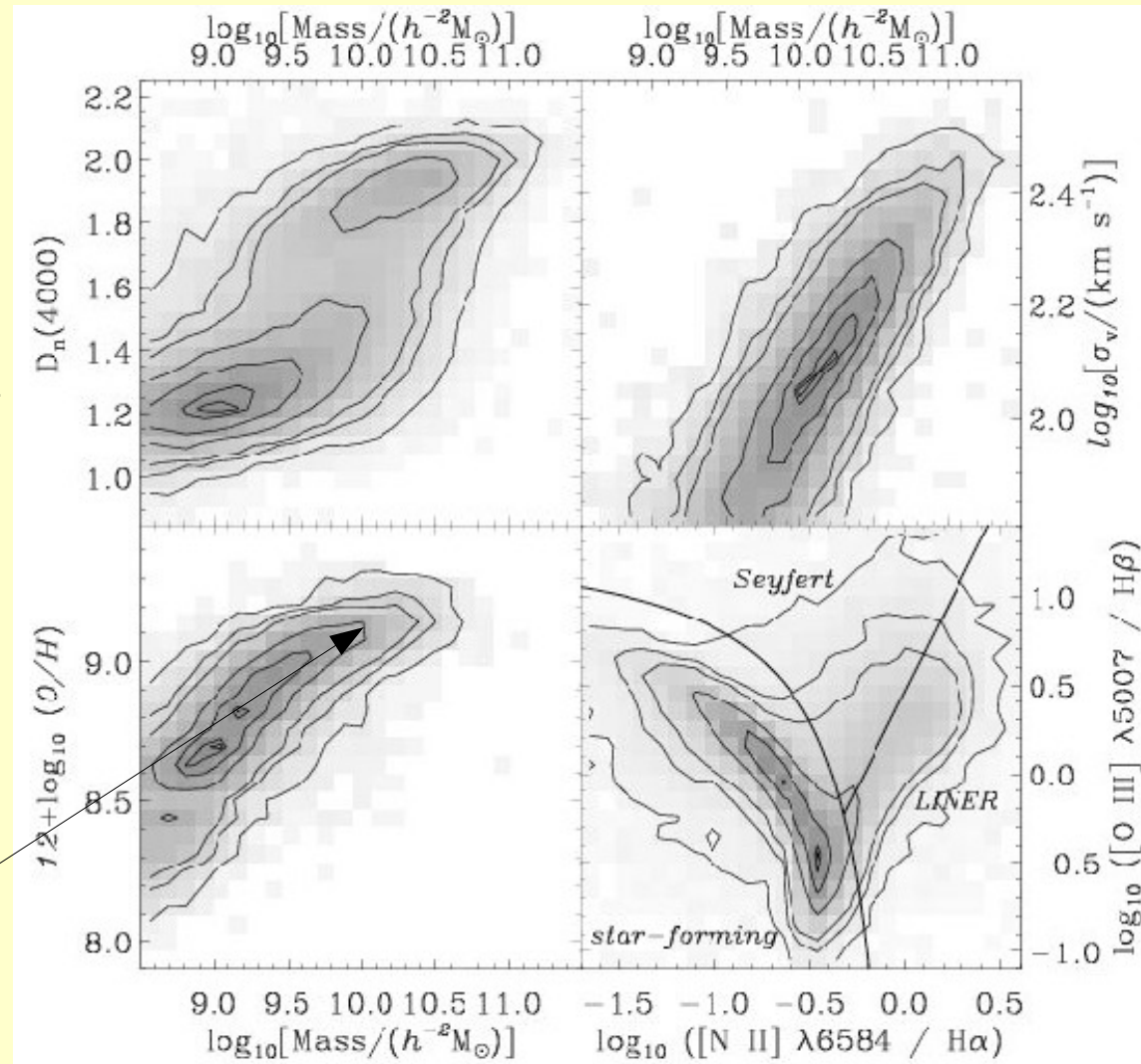
Not different from Ell



Spectral properties

All galaxies
 +Dn(4000)
 +passive=SF
 Stopped a long
 time ago

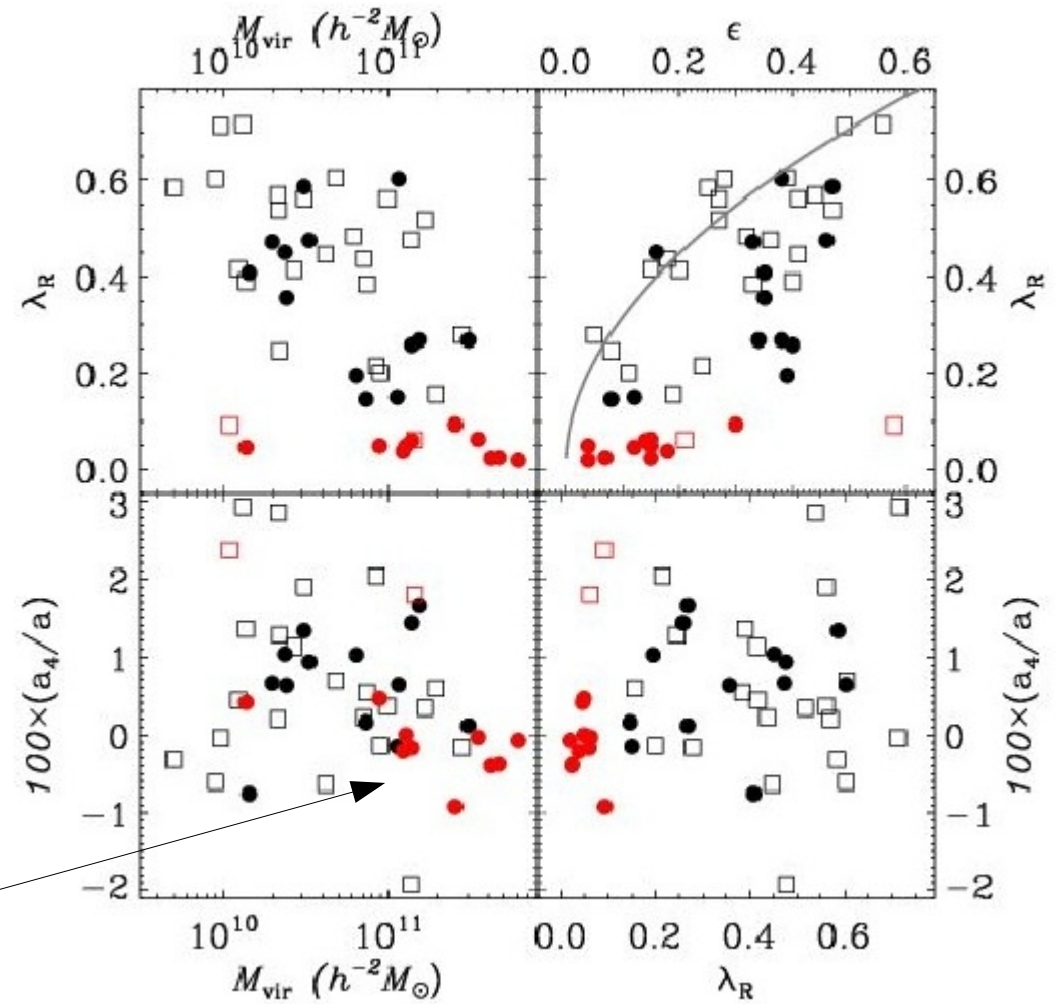
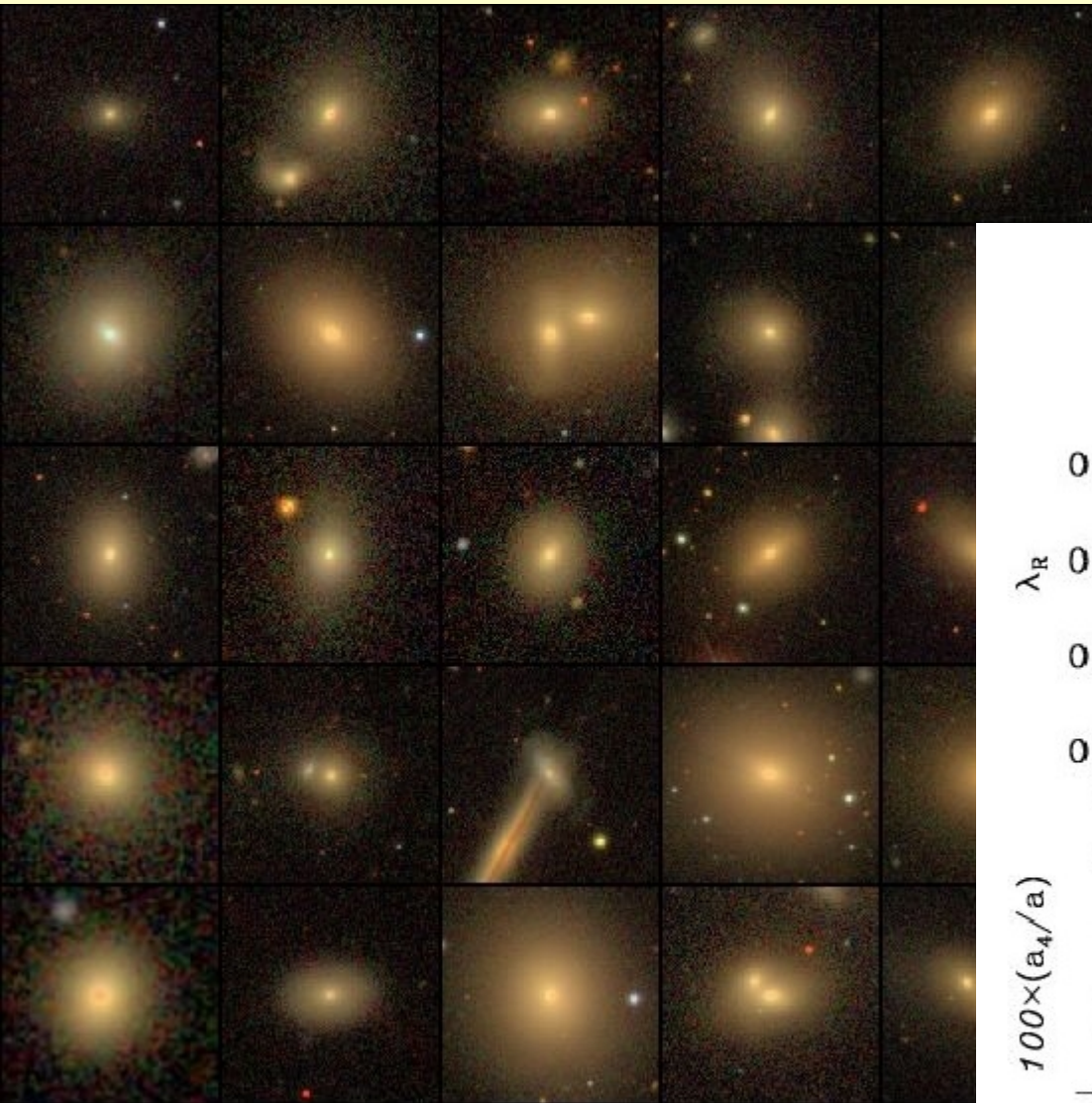
Star forming
 +massive
 +metallicity



Passive
 Faber-Jackson
 relation

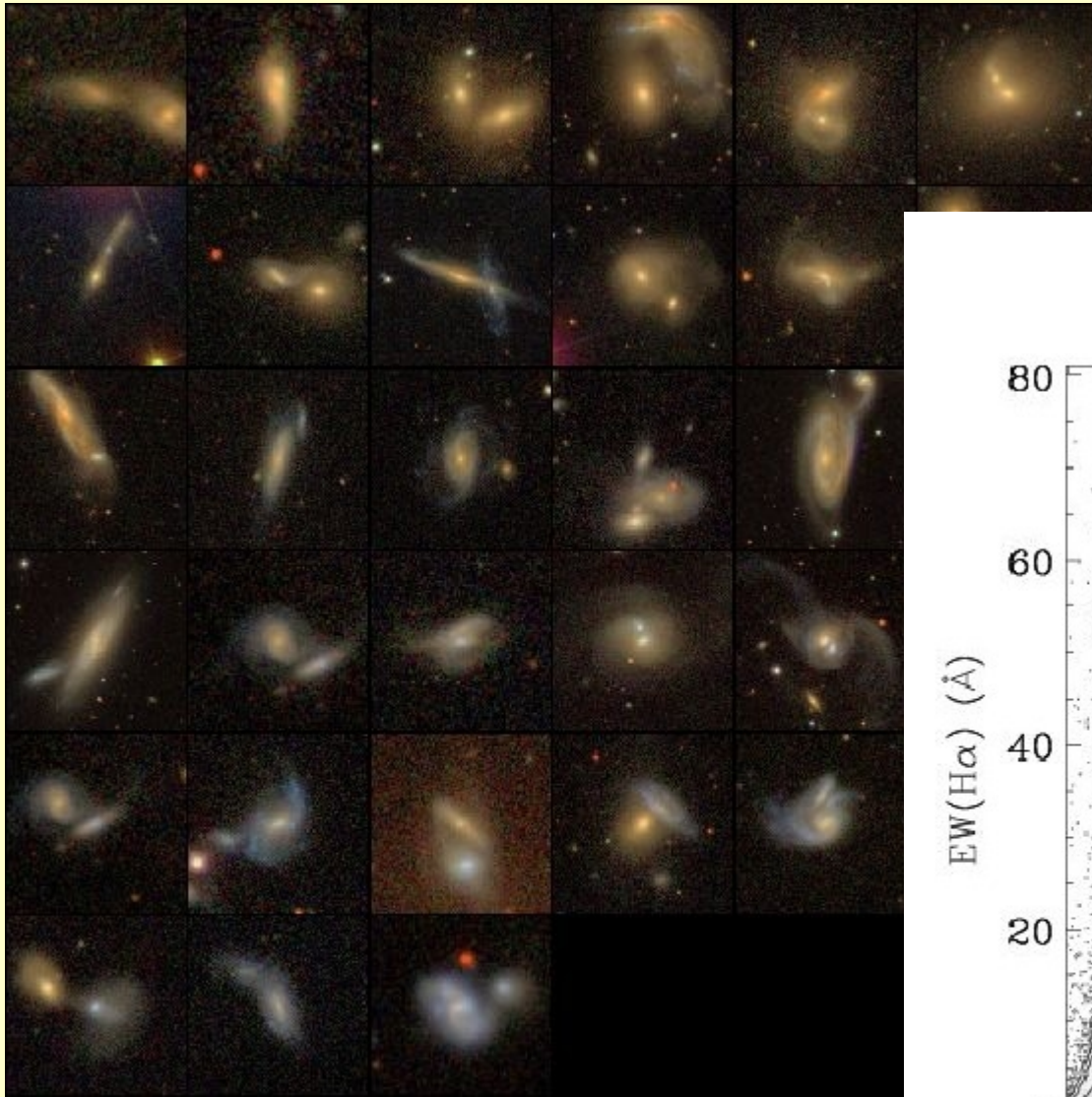
Active
 Diagram of
 Baldwin
 Phillips
 Terlevich
 Diagnostic for
 AGN/SF gals

Ellipticals

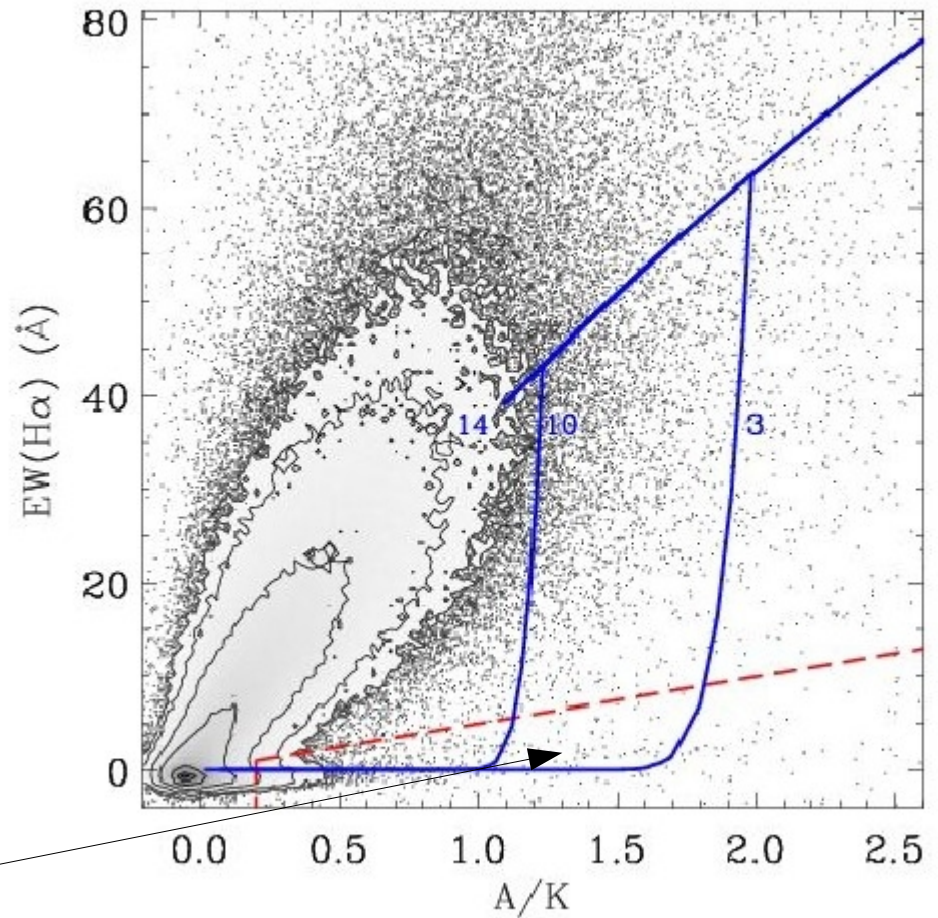


Boxies are slow/no rotators

Peculiar galaxies: interactions, mergers, starbursts, and poststarbursts



Star forming galaxies: points



E+A/k+A/poststarbursts

Hdelta, but not emission lines, under the red dashed line