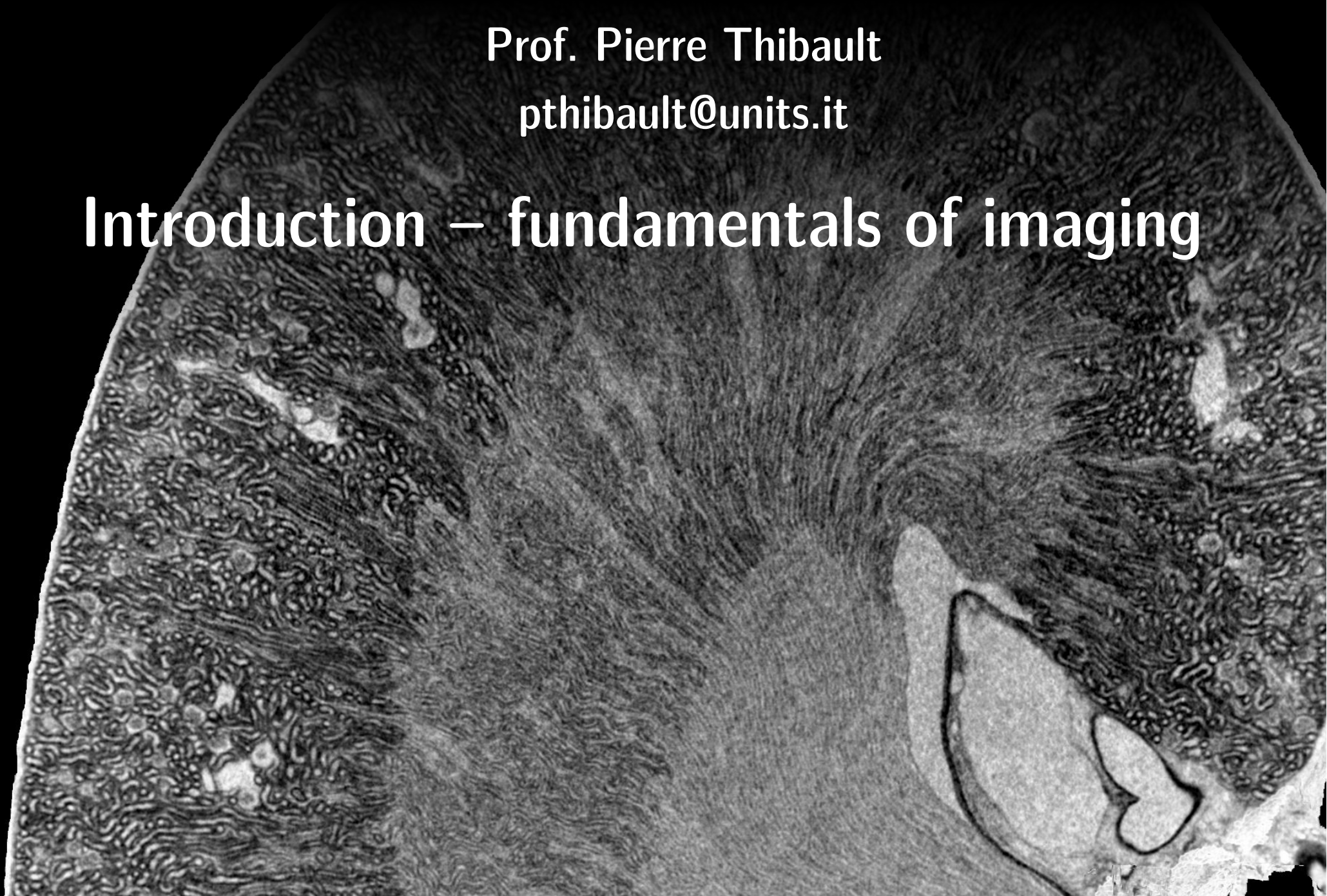


Image Processing for Physicists

Prof. Pierre Thibault

pthibault@units.it

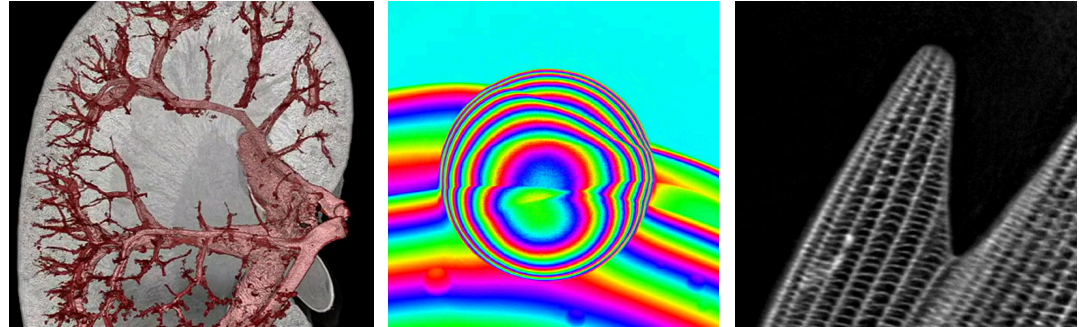
Introduction – fundamentals of imaging



For the curious

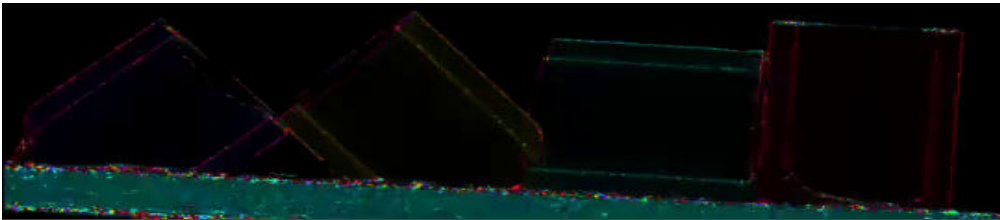
Pierre Thibault [pi-er ti-bo]

- From Québec
- PhD USA
- Postdoc #1: Switzerland
- Postdoc #2: Germany
- Academic work: UK
- UniTS since Sept. 2020



My research:

- X-ray imaging and tomography
- Specifically: new methods that exploit coherence and redundancy in datasets (→ involve heavy reconstruction algorithms)



<http://s-baxit.optimato.eu>

Syllabus

1. Spatial Domain
2. Fourier Domain
3. Filters, Sampling & Interpolation
4. Linear Imaging Systems
5. Wave Propagation and Image detection
6. Interferometric Imaging
7. Tomography & Medical Imaging
8. Introduction to Optimization: Least Squares, Maximum likelihood and Maximum A Posteriori Principles.

Philosophy

Techniques

Core knowledge of most common mathematical and numerical tools for imaging and microscopy, from a physicist's view point.

Coding skills

Opportunity to improve (python) coding proficiency (more *scripting* than *programming*).

Decoding

Learning the terminologies to understand quickly research work that use imaging.

Critical thinking

Learn to identify the proper tools for a specific imaging need, analyse and criticise image processing operations found in the literature.

Admin

- Room T20 (department of physics)
- Wed 11:00-13:00 + Thu 9:00-11:00
- Lectures + tutorials
- Weekly exercises (python)
- Final assessment: 10 min presentation + discussion

What is an image?

- We adopt the definition:

“Spatial representation of information”

- 2D (most common)
- 2D multichannel (e.g. color)
- 2D timeseries (movies)
- 3D (tomographic data, ...)
- 1D (why not?)

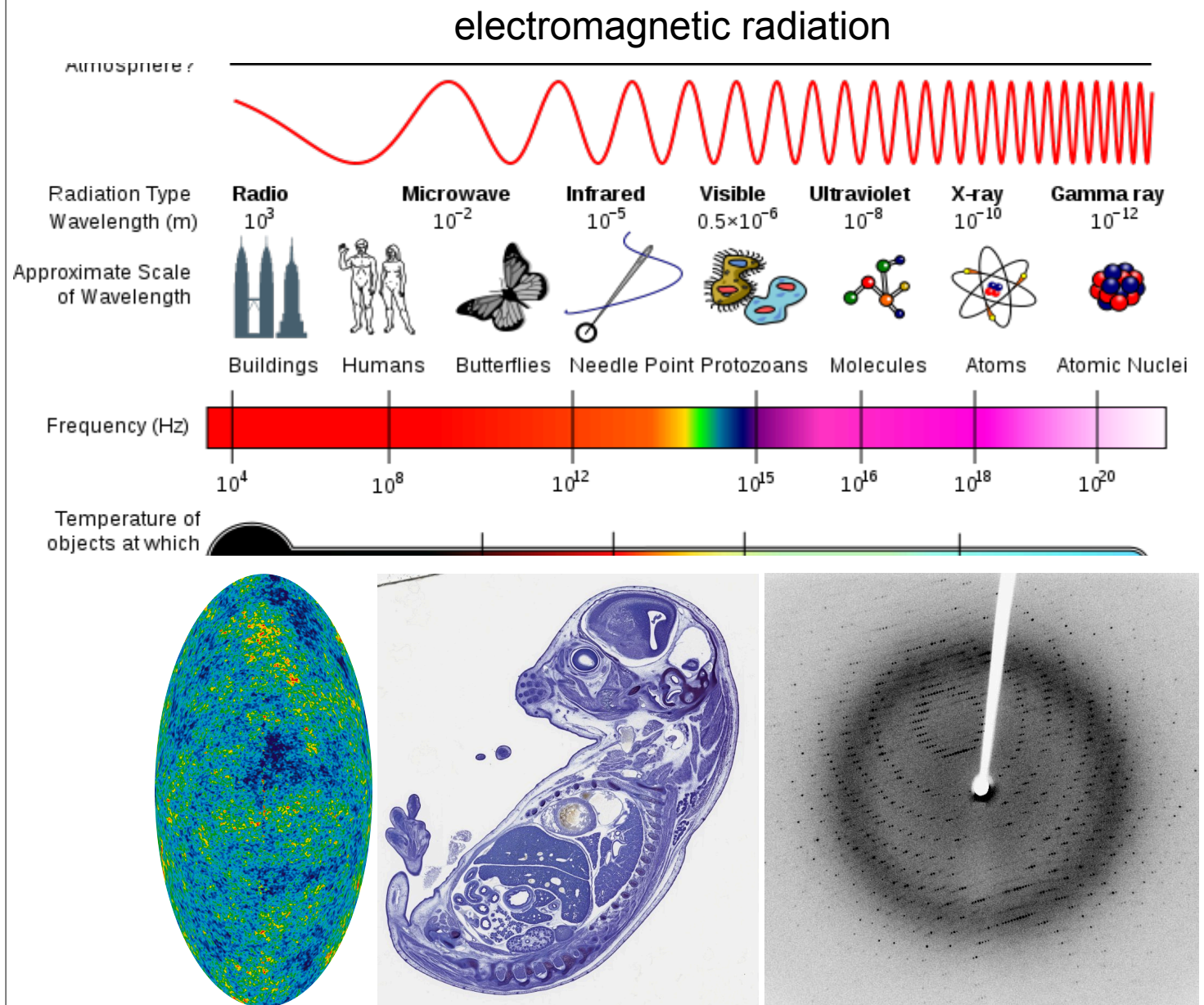
The imaging chain

Information

The imaging chain

Information

Probe



source: <http://www.wikipedia.org>

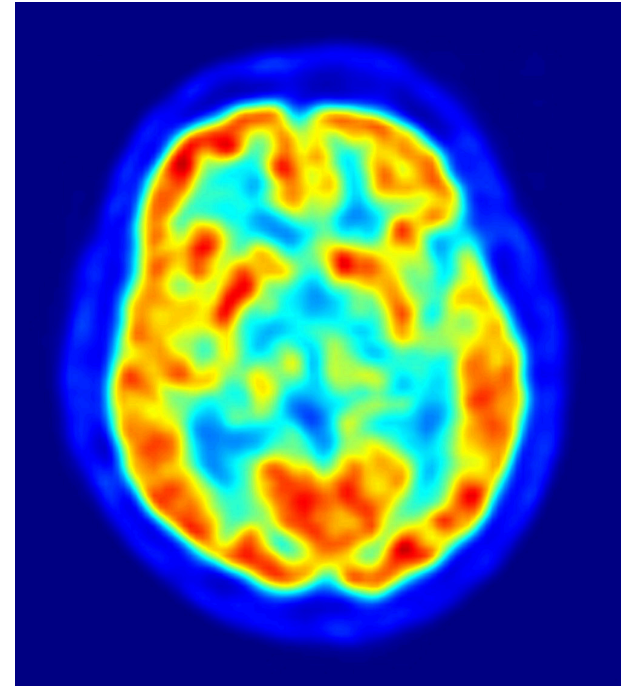
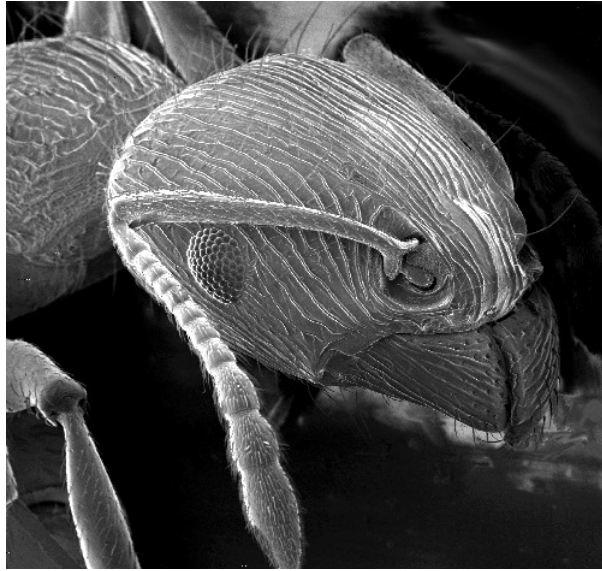
<http://www.brainmaps.org/>

The imaging chain

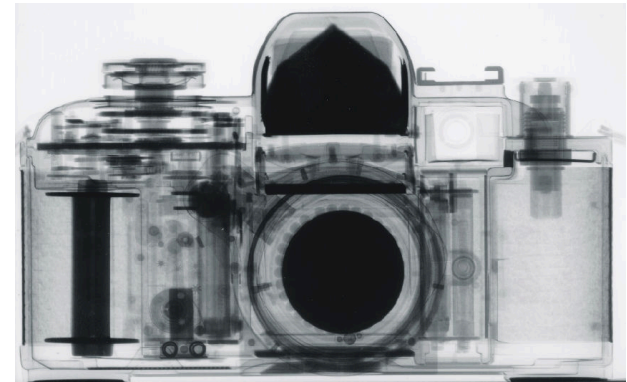
Information

Probe

particles / particle decay



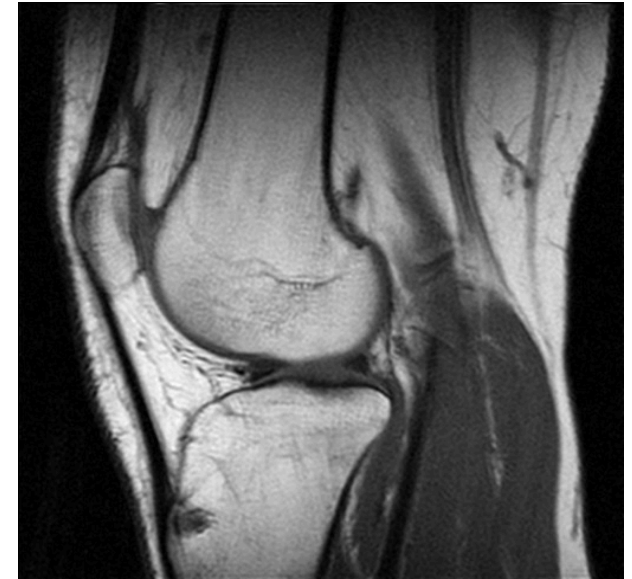
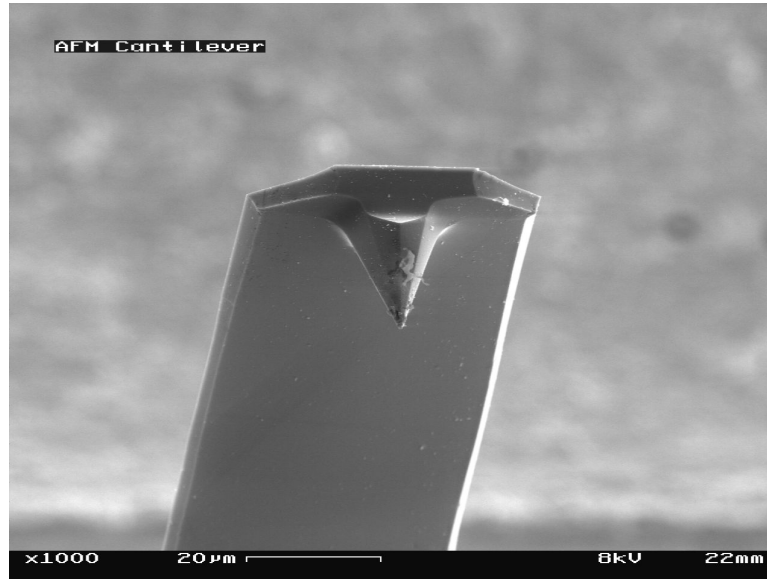
source: <http://www.wikipedia.org>



source: <http://www.ati.ac.at/~neutropt/experiments/Radiography/radiography.html>

The imaging chain

pressure, force, magn./elec. fields, ...

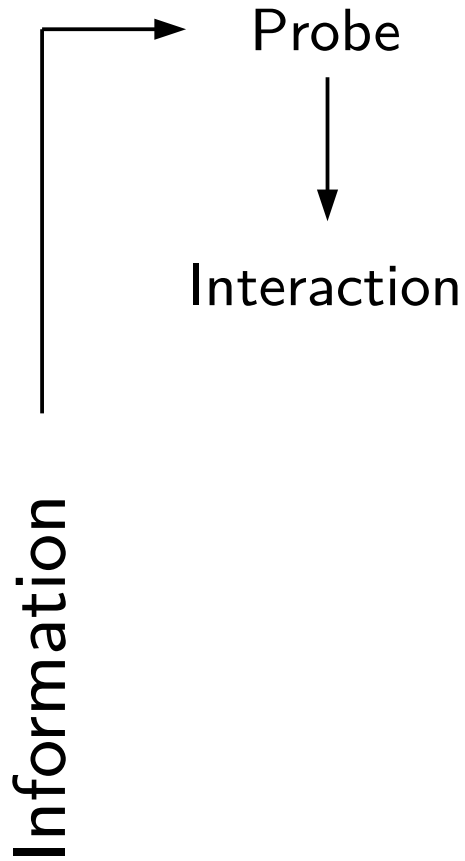


source: <http://www.wikipedia.org>

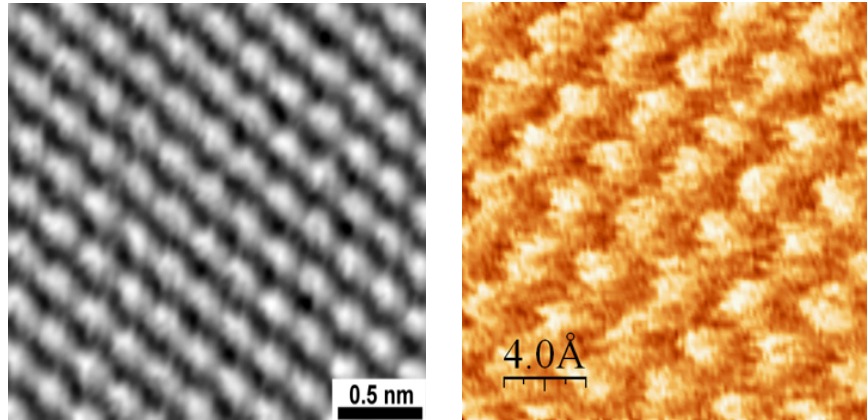
Information

Probe

The imaging chain

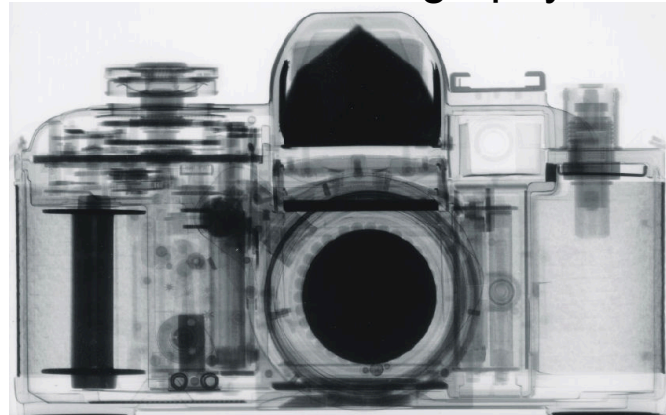


STM HOPG AFM

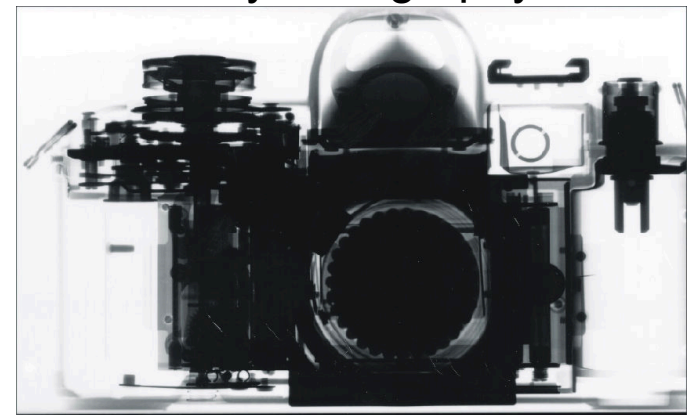


source: <http://www.wikipedia.org>

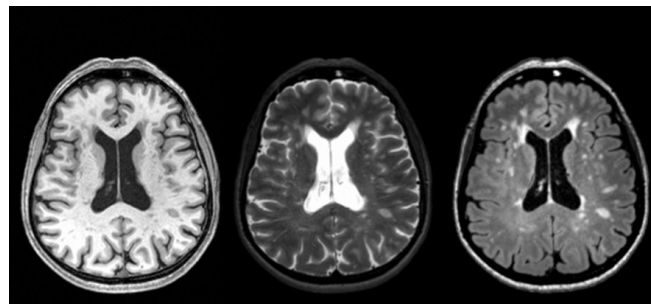
Neutron radiography



X-ray radiography



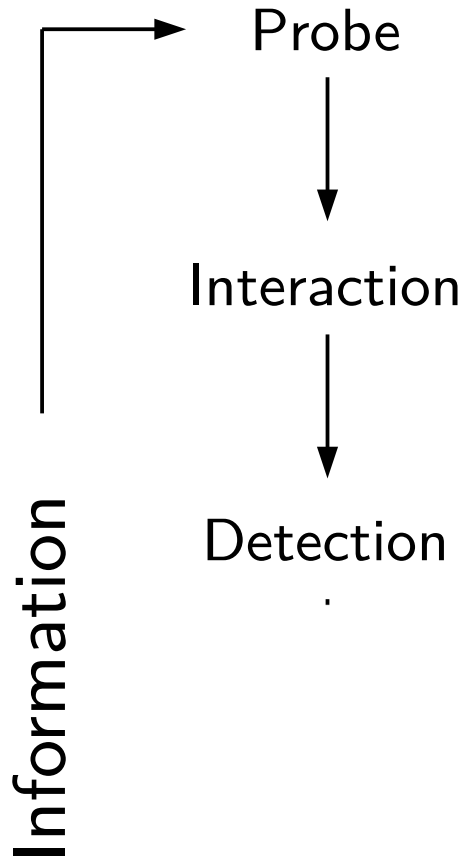
source: <http://www.ati.ac.at/~neutropt/experiments/Radiography/radiography.html>



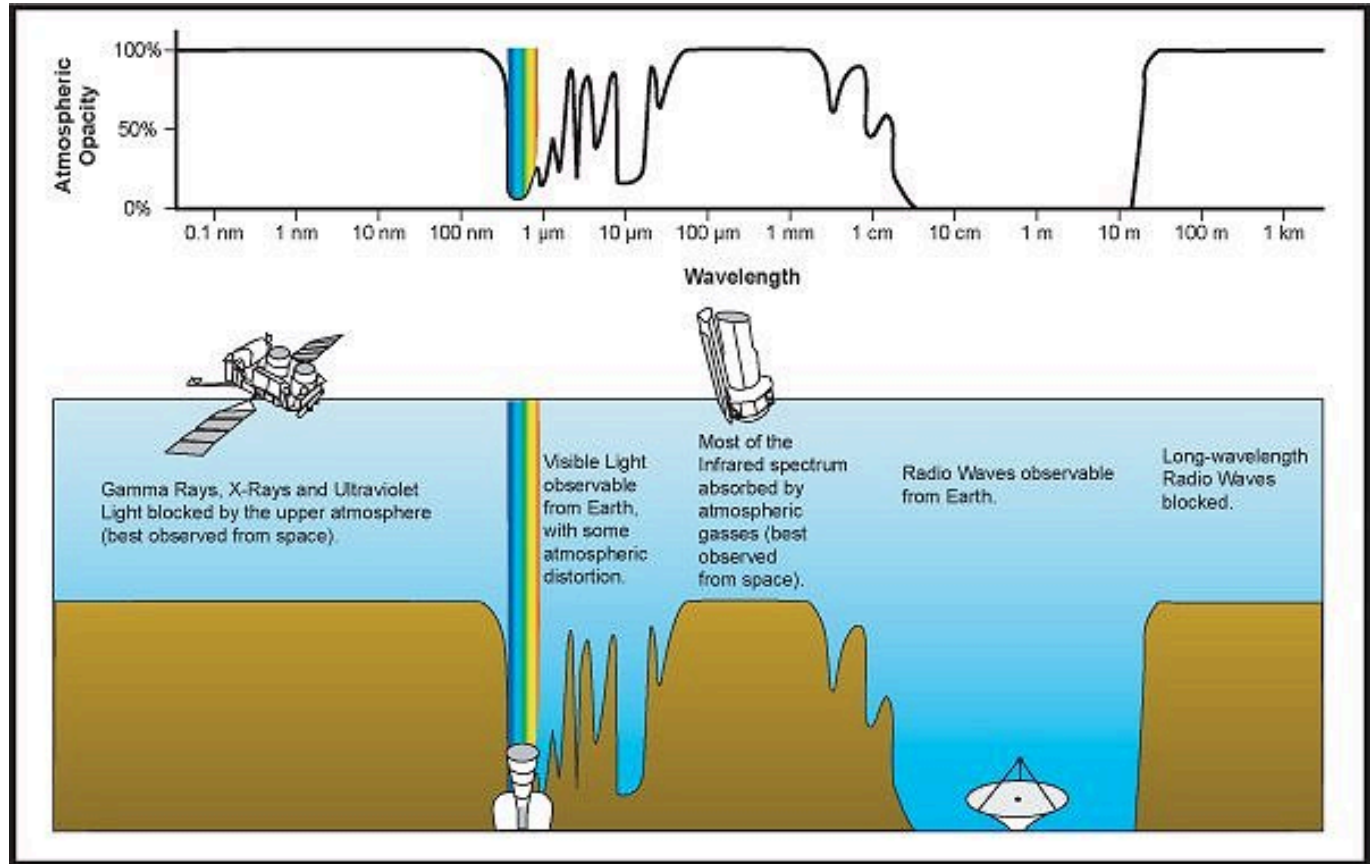
Brain MRI (T1, T2, FLAIR)

<http://www.mrforschung.med.uni-goettingen.de>

The imaging chain

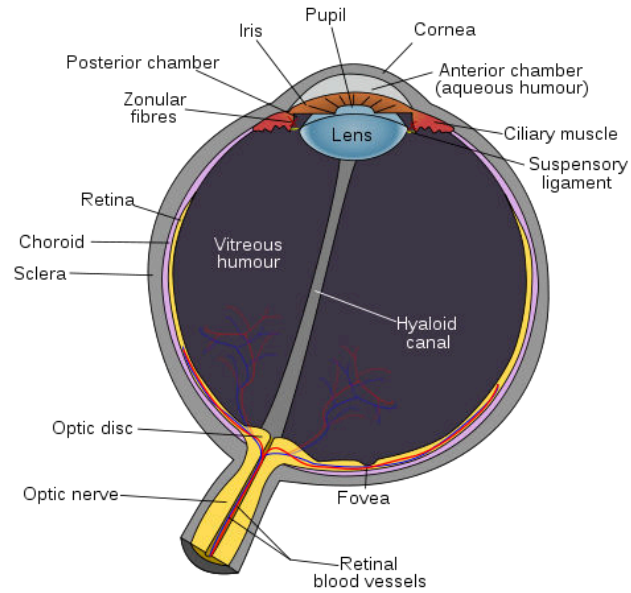
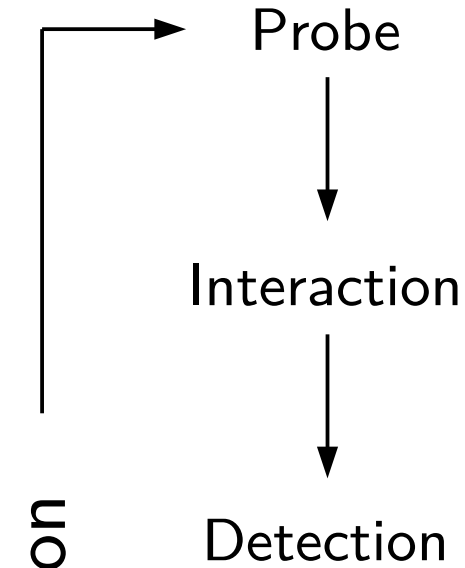


Information has to reach detector

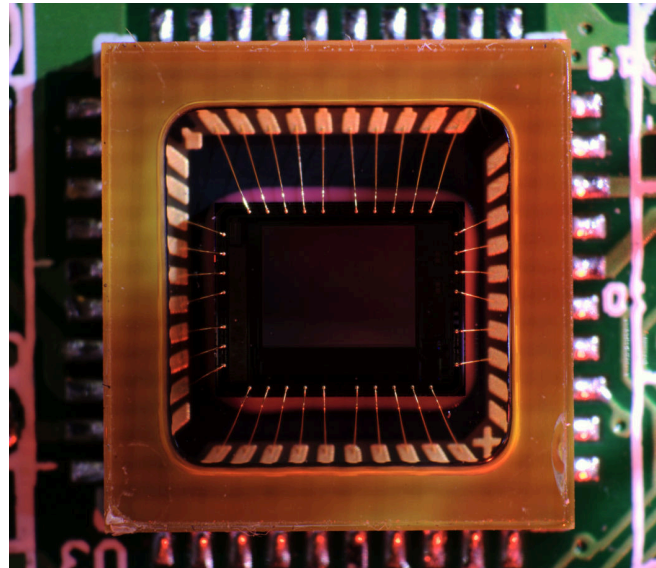


source: <http://www.wikipedia.org>

The imaging chain

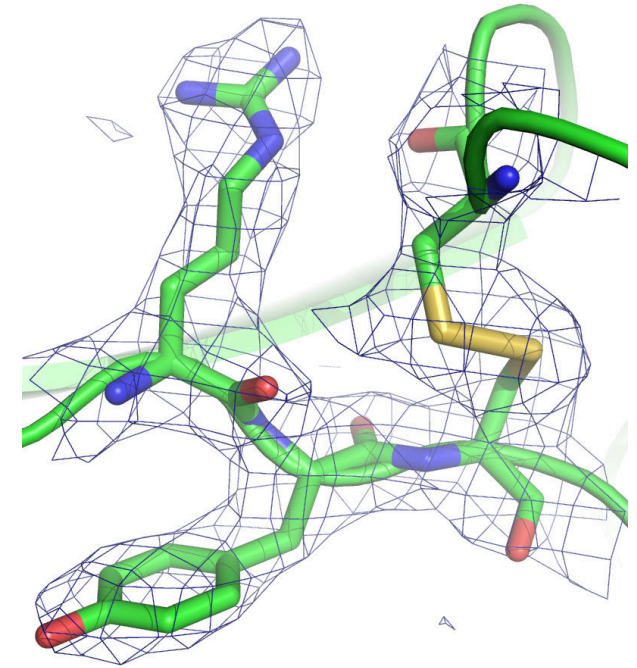
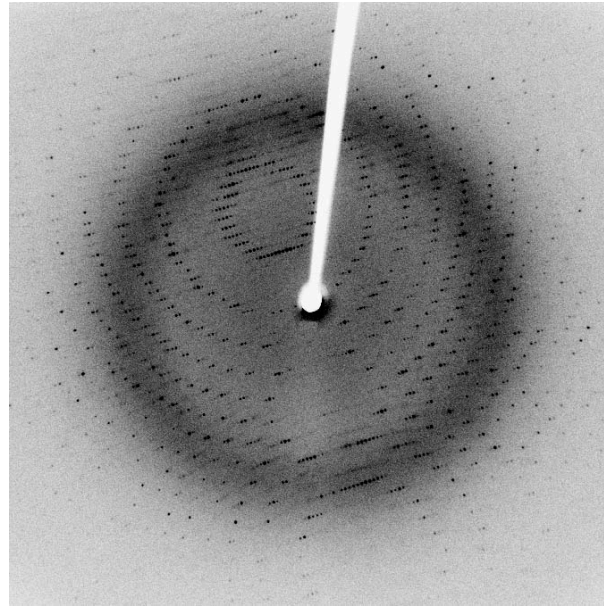
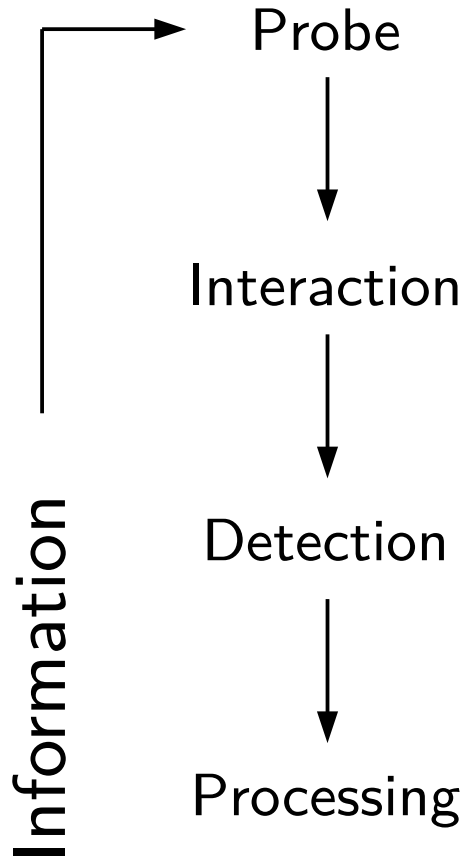


biological, chemical, electronic, interferometric detectors



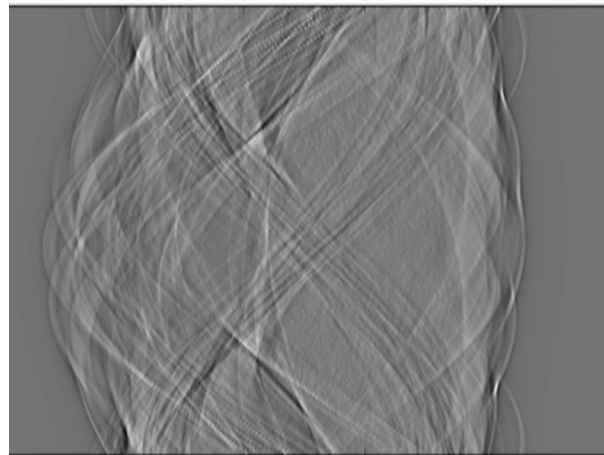
source: <http://www.wikipedia.org>

The imaging chain



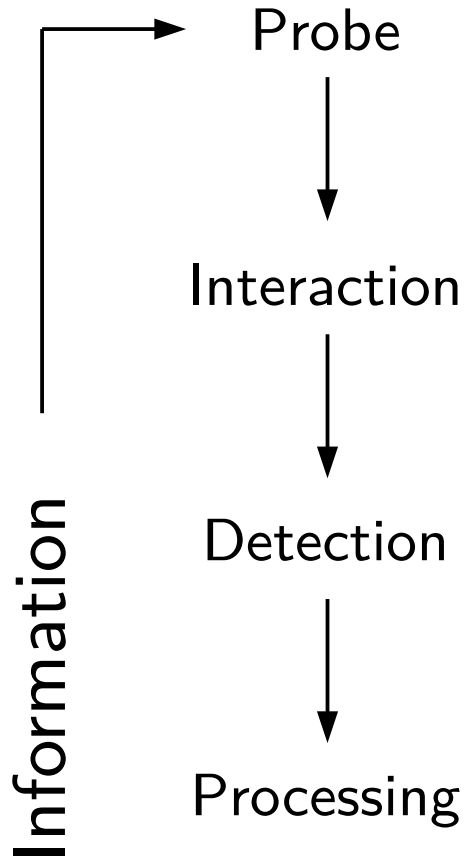
source: <http://www.wikipedia.org>

Reconstruction from hard to interpret raw data

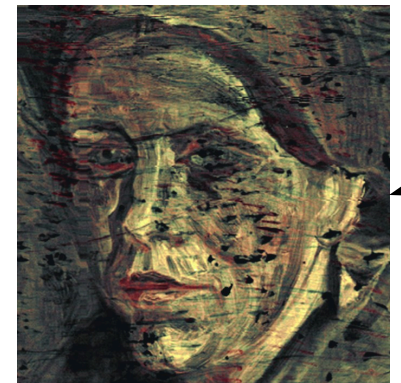
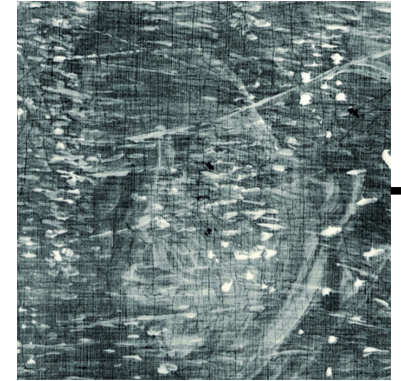


source: P.Thibault, M.Bech

The imaging chain

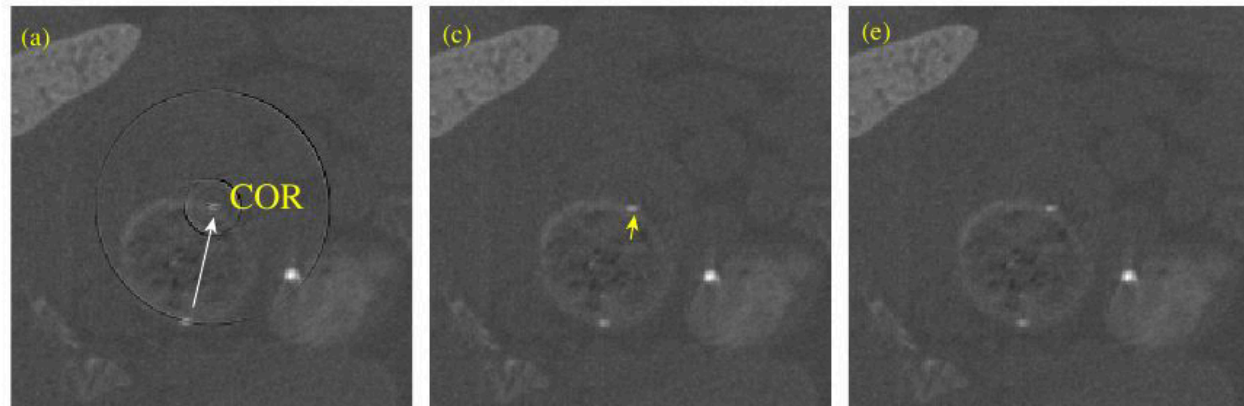


analysis, feature extraction, ...



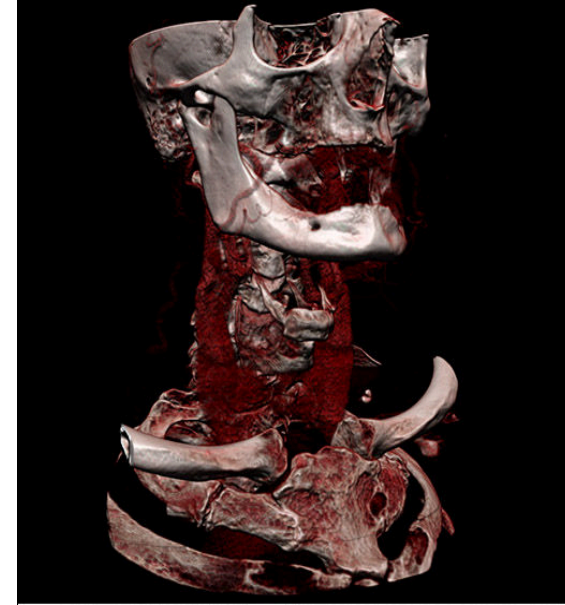
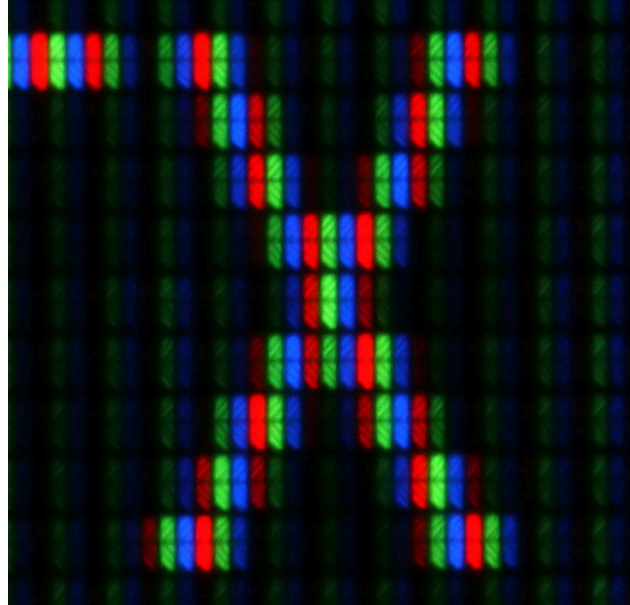
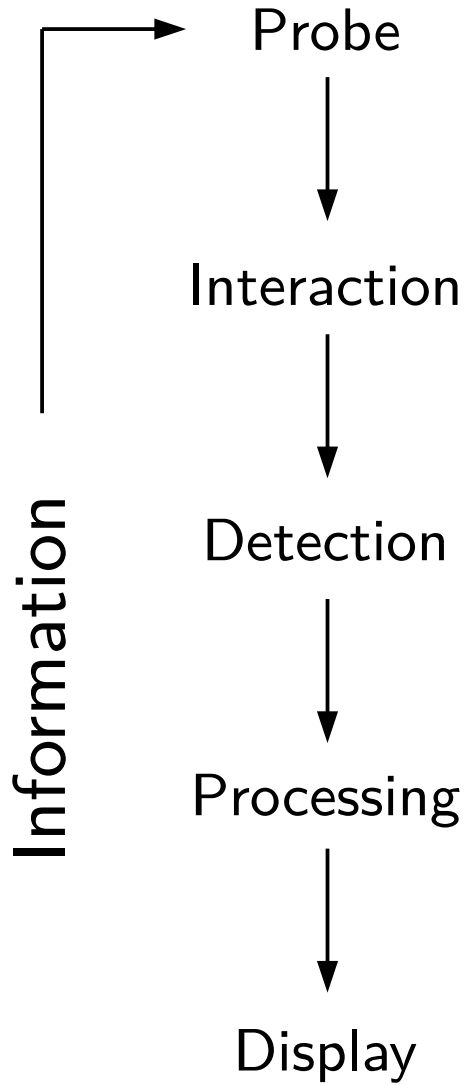
source: J. Dik, et al. *Anal. Chem.* 80, 6436-6442 (2008)

Error correction, artifact reduction, ...

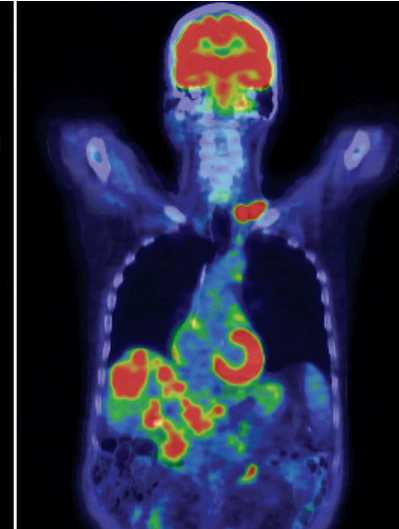


source: E. M. Abu Anas et al. *Phys. Med. Biol.* 55 6911 (2010)

The imaging chain

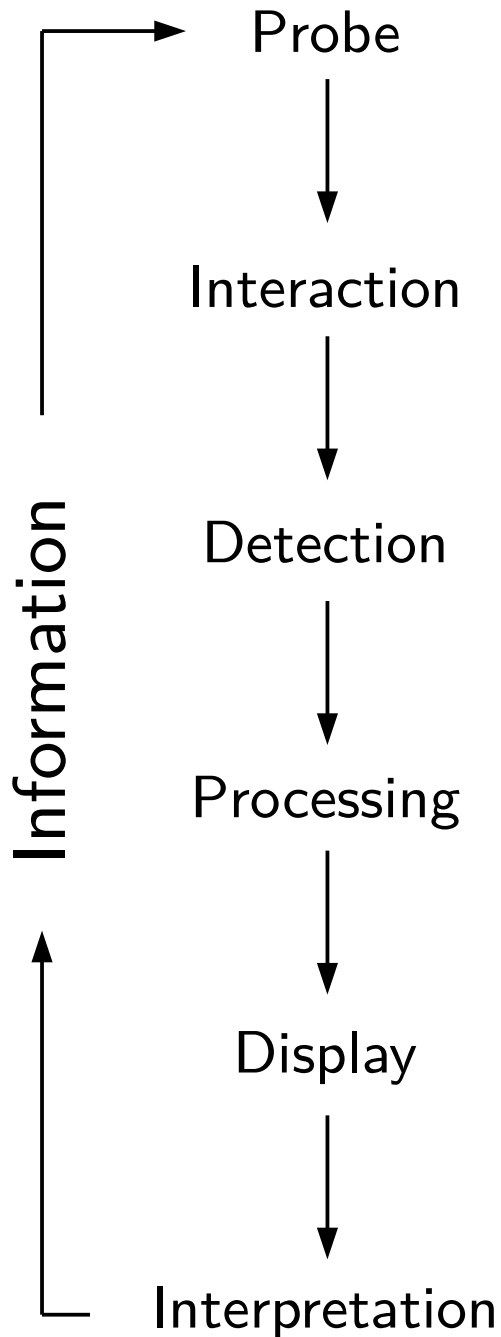


source: <http://www.wikipedia.org>

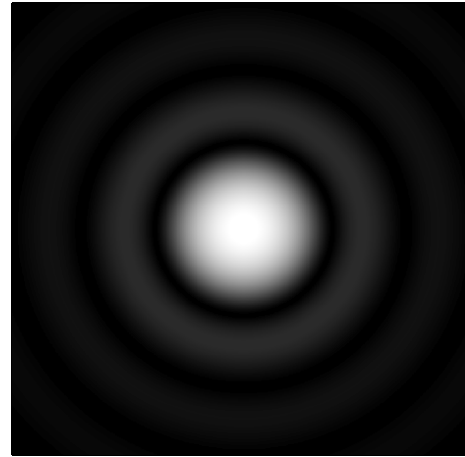


source: <http://www.aztechradiology.com>

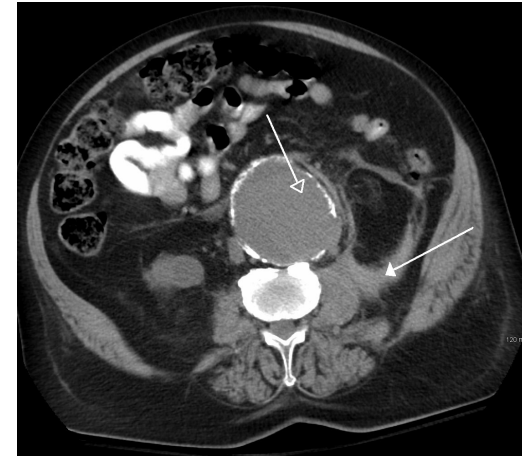
The imaging chain



Extraction of information not always straightforward



Airy disc



ruptured aorta (deadly)

source: <http://www.wikipedia.org>

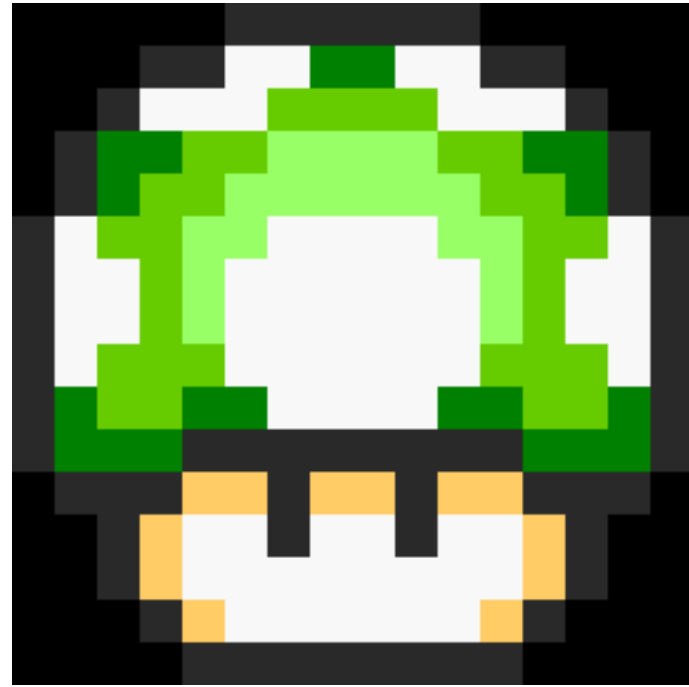
Extraction depends on level of education

We are part of the imaging system!

Digitization, sampling, quantization

Data (nowadays) almost always discrete

Discrete representation of a continuous function



Digitization, sampling, quantization

What is a pixel?

sample of continuous function,

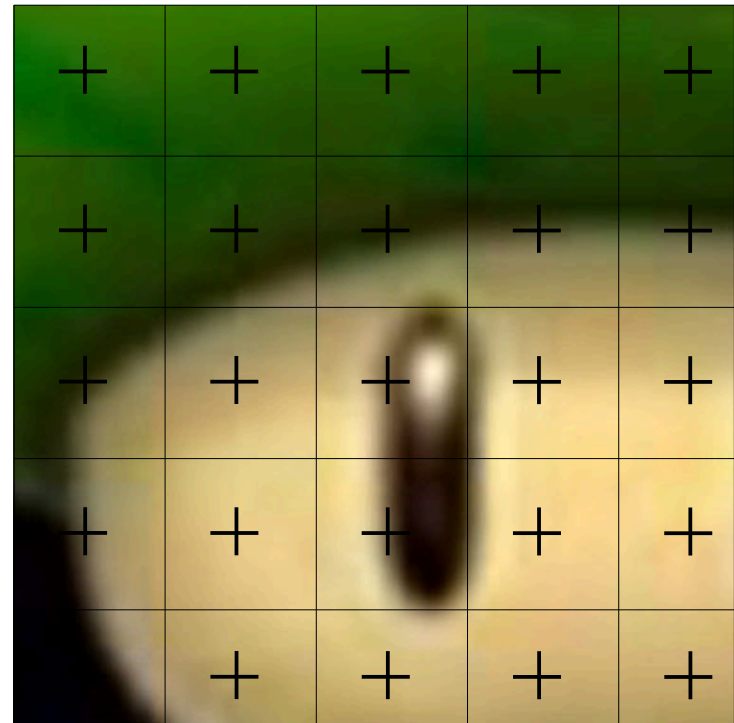
with coordinates and value(s)

- value at coordinate

- mean over pixel area

- ...

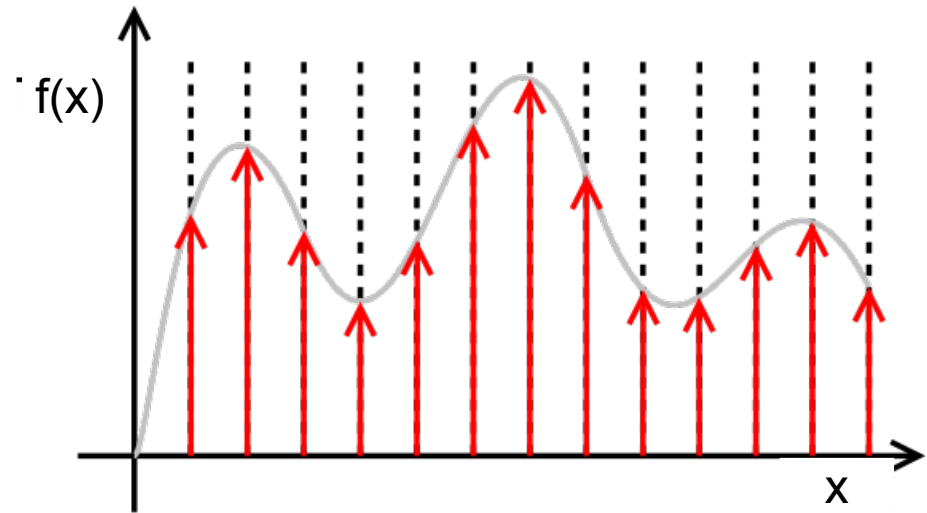
NOT a box-like image feature



Digitization: sampling + quantization

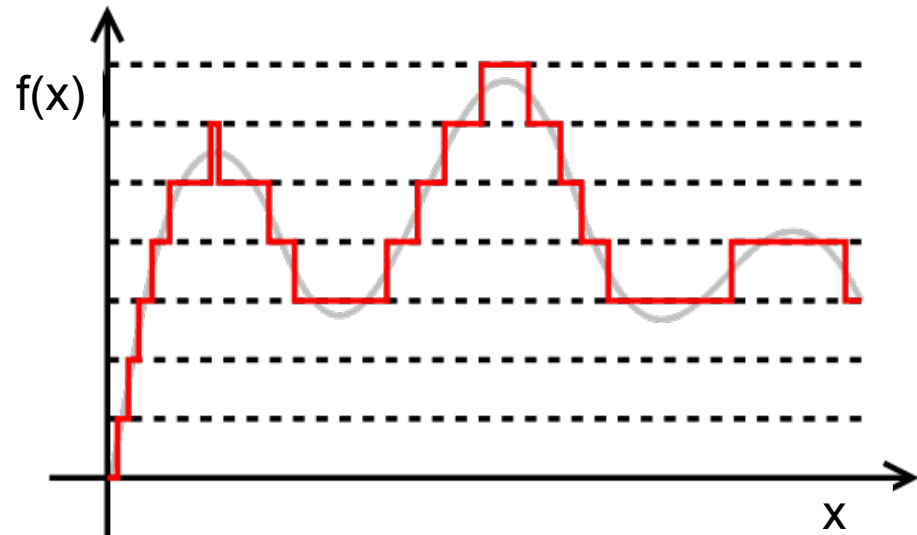
Digitization in space:

sampling



Digitization in 'intensity':

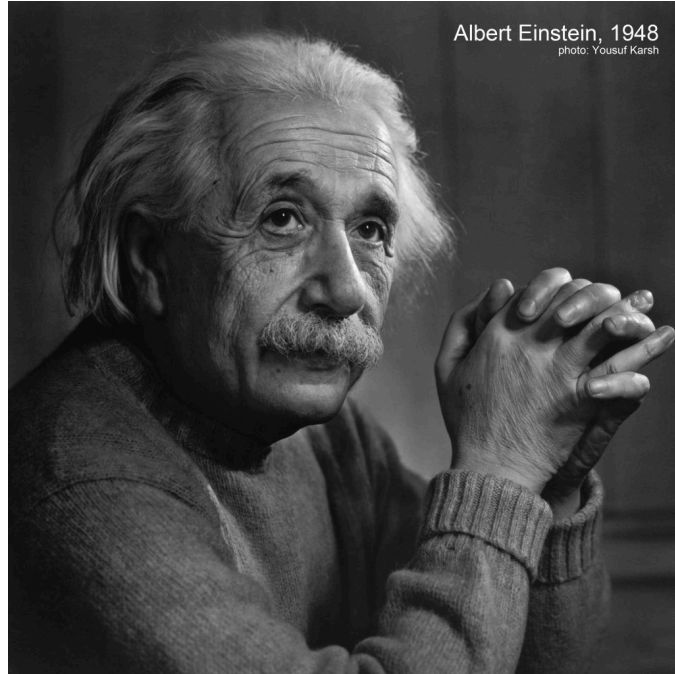
quantization



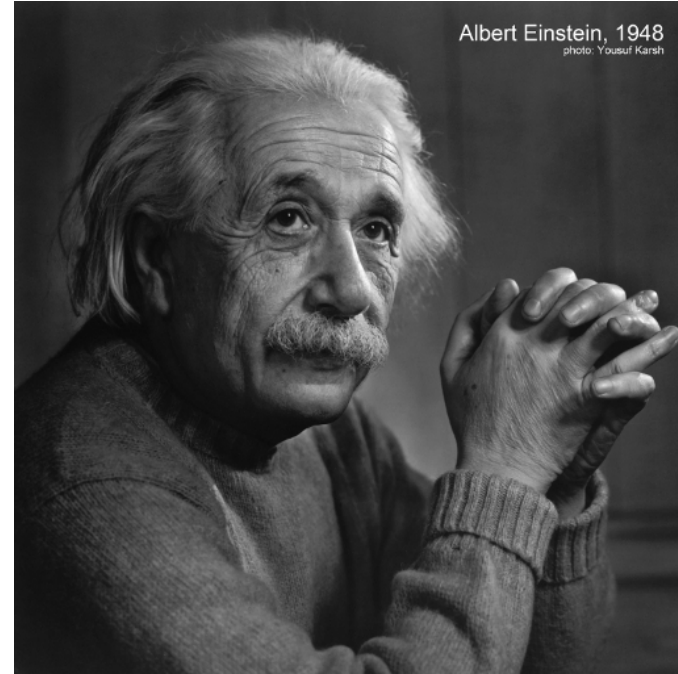
source: <http://www.wikipedia.org>

Digitization: sampling + quantization

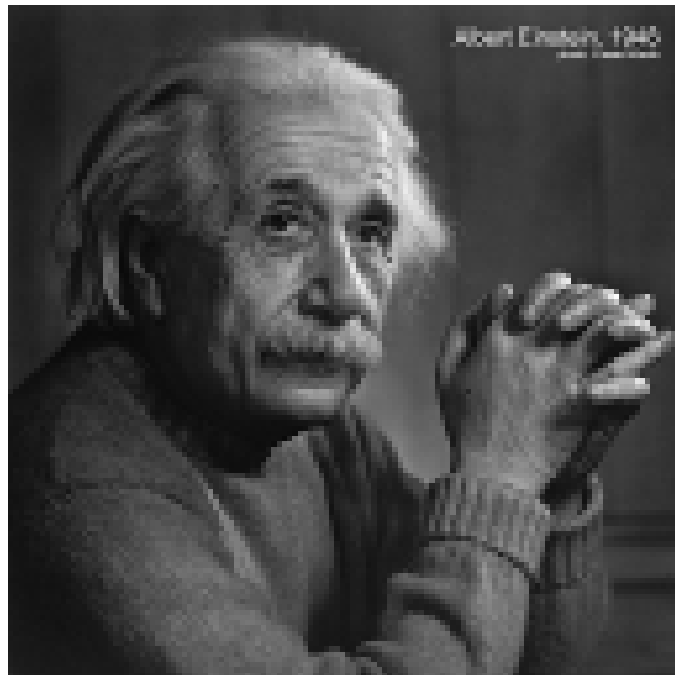
2048 x 2048



256 x 256



128 x 128

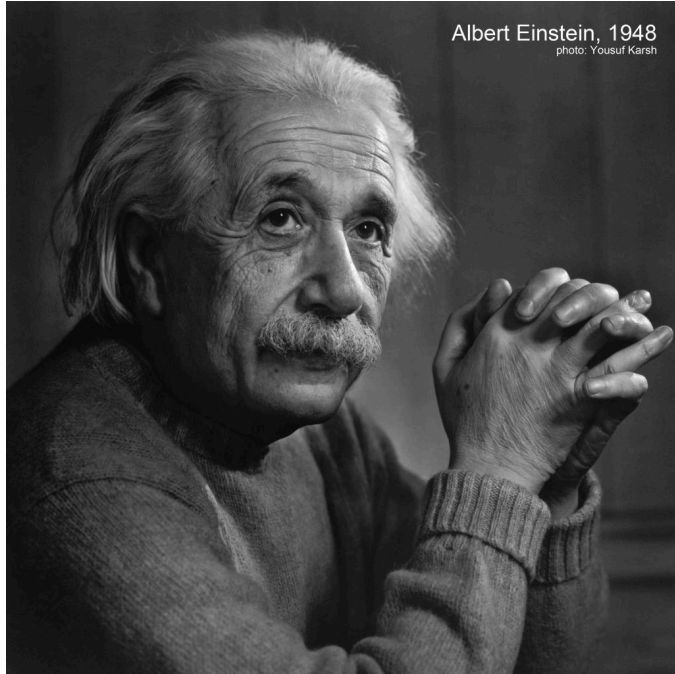


32 x 32

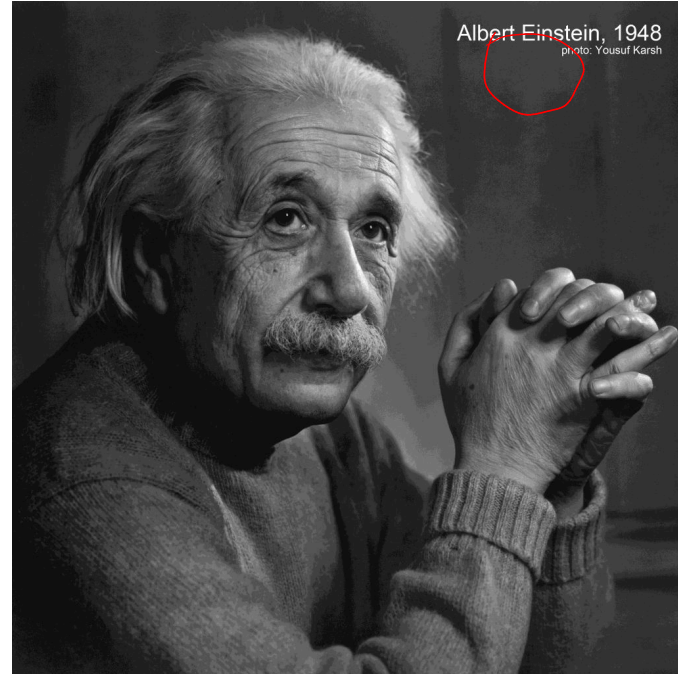


Digitization: sampling + quantization

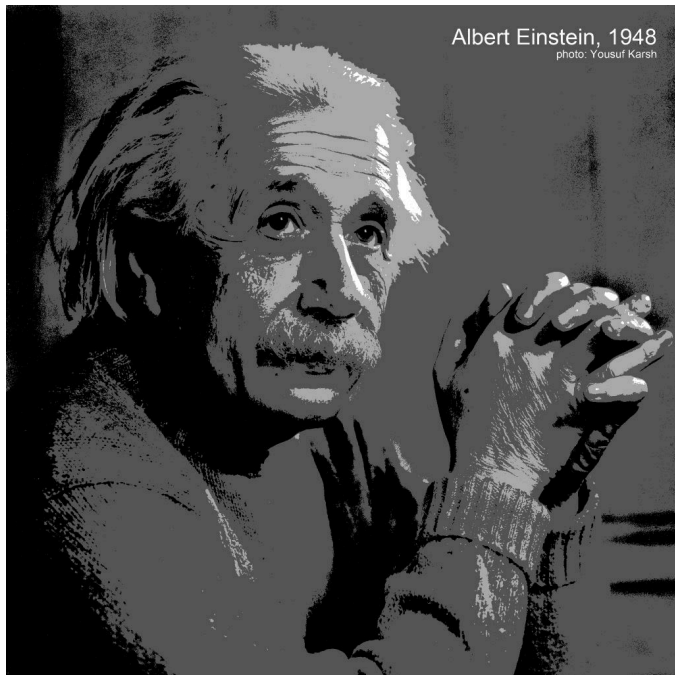
16 bit = 16.777.216 levels



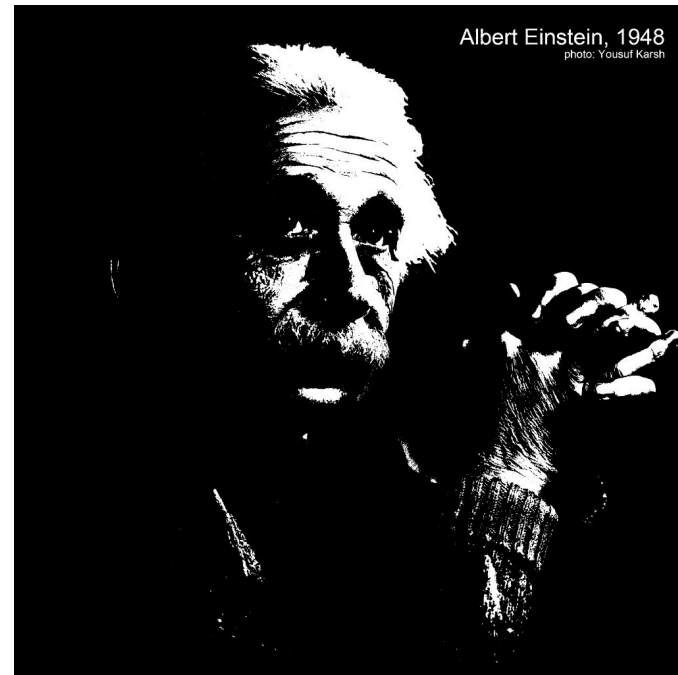
4 bit = 16 levels



2 bit = 4 levels

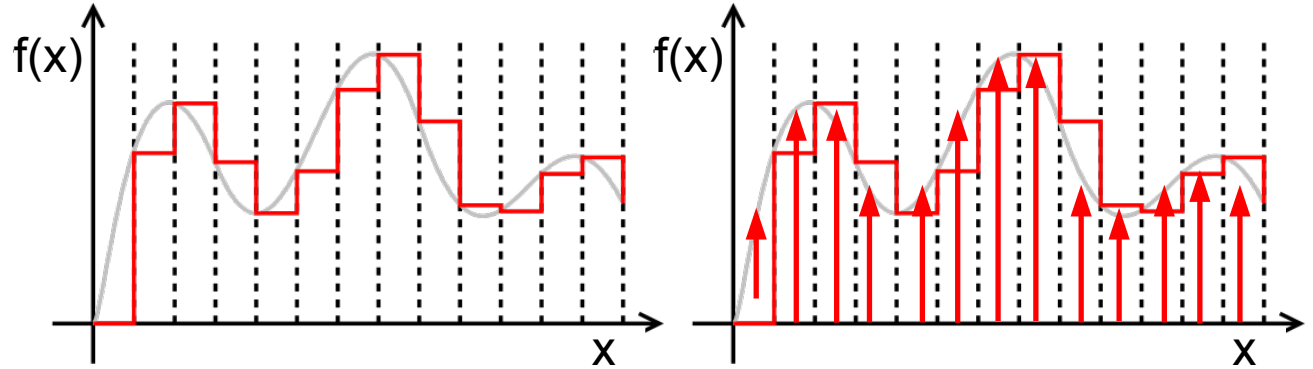


1 bit = 2 levels



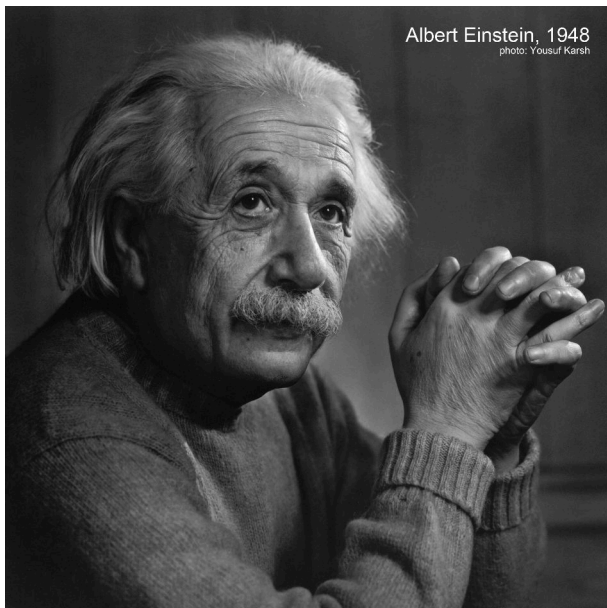
Interpolation

Change sampling
and quantization

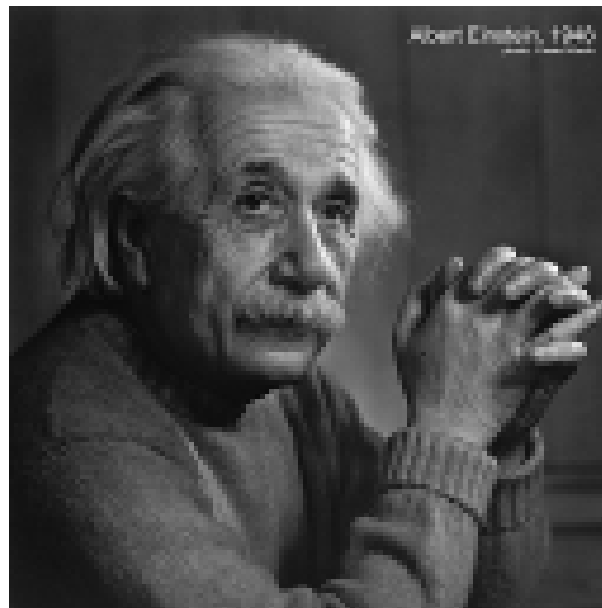


Loss of information (fine details)

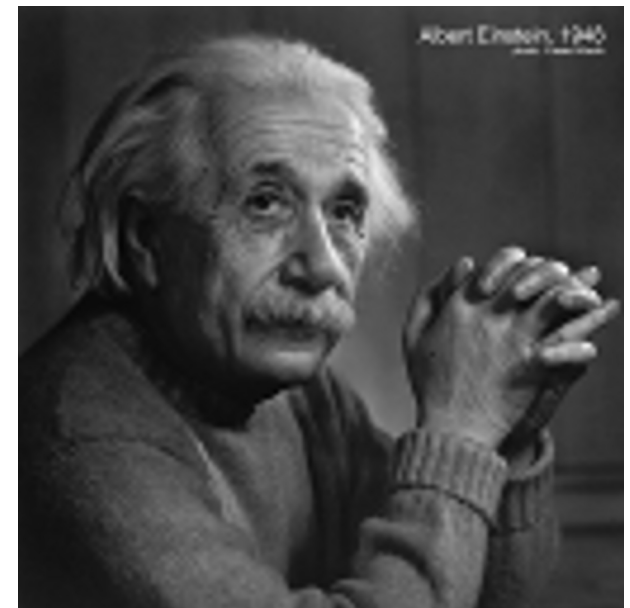
2048 x 2048



128 x 128

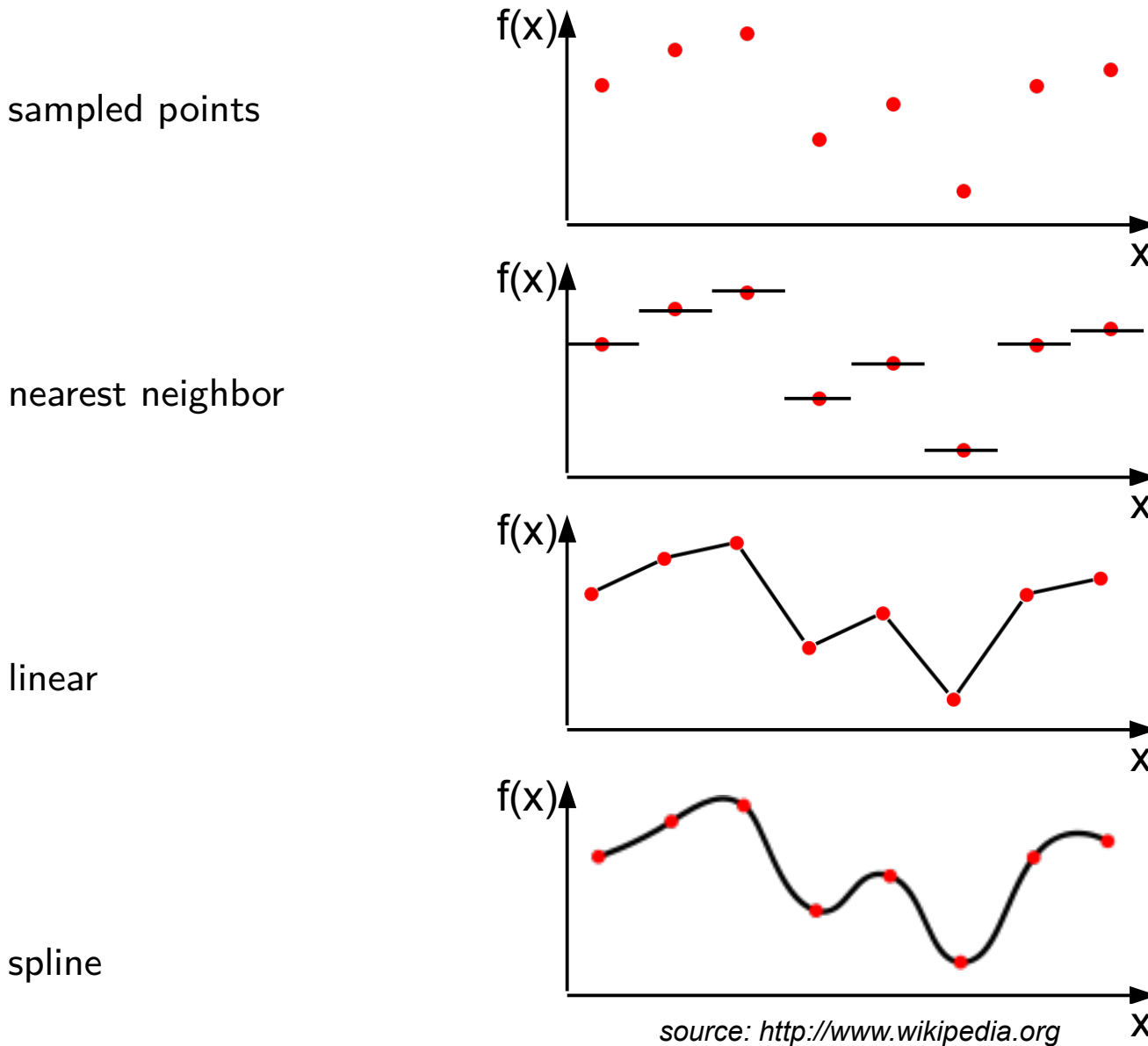


2048 x 2048 cubic



Interpolation

Various interpolation methods available



Field of view

Sampling restricted to field of view of detector

Venus surface from Magellan orbiter

Stitching of multiple
fields of view

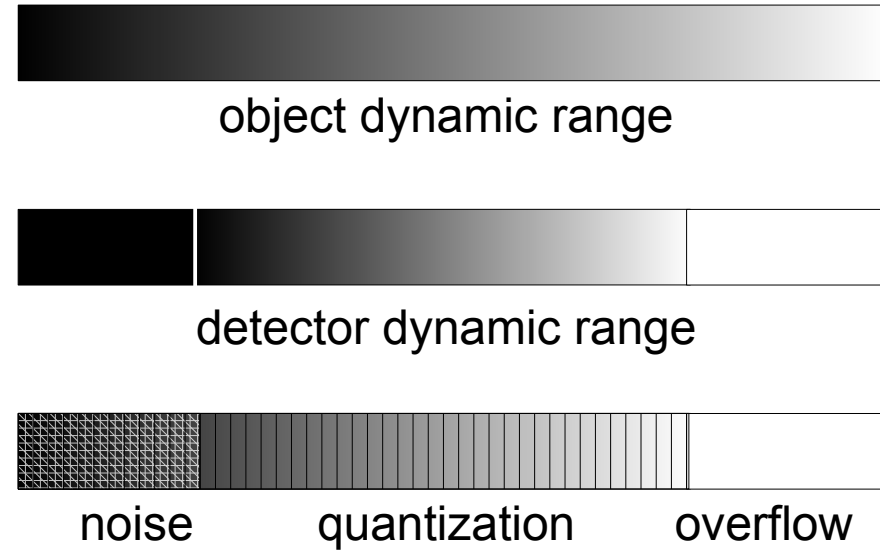


source: <http://www.wikipedia.org>

Accounting for missing data?

Dynamic range

Quantization restricted to
dynamic range of detector
Loss of information
(low, high intensities)



Long exposure



Short exposure



HDR fused image



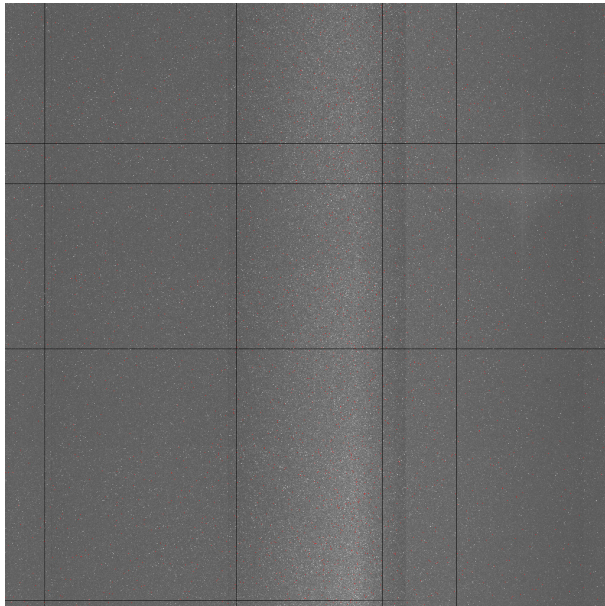
source: <http://www.wikipedia.org>

Image noise

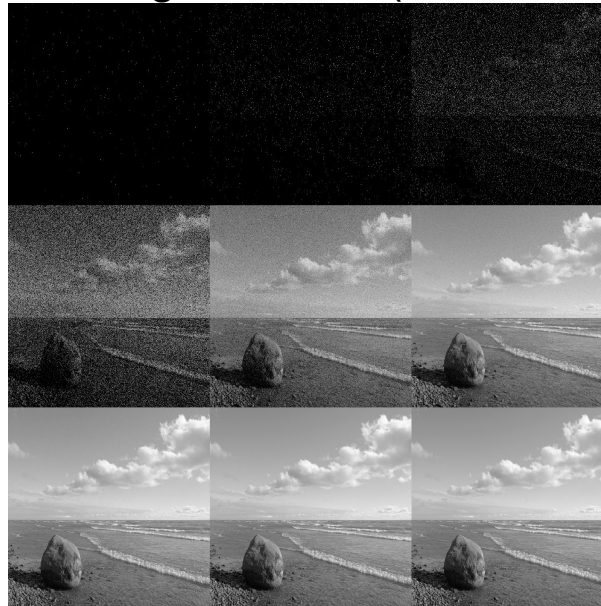
Is (unfortunately) always present

Characterization by source

Detector dark current

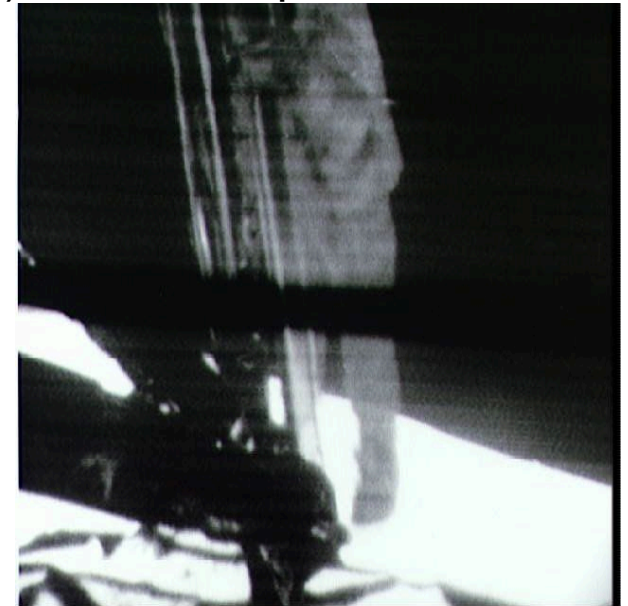


Counting statistics (shot noise)



source: <http://wikipedia.org>

Acquisition



source: <http://nasaimages.org>

Image noise

Is (unfortunately) always present

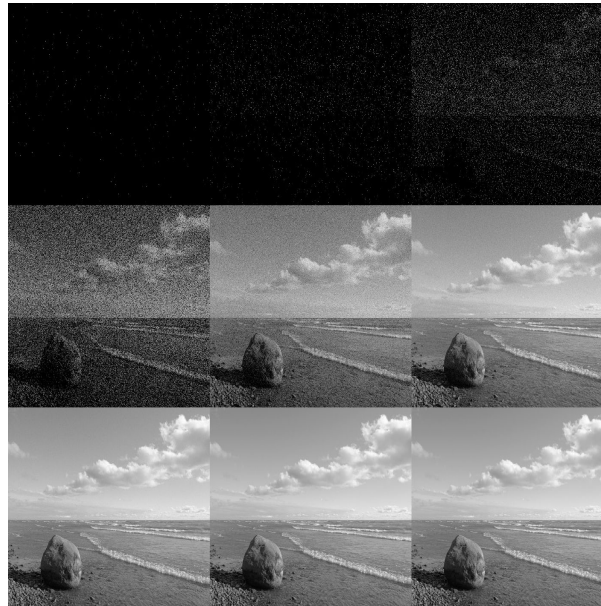
Characterization by source

Characterization by density function

Gaussian distribution



Poisson distribution



Fat-tail distributions



source: <http://www.wikipedia.org>

Image noise

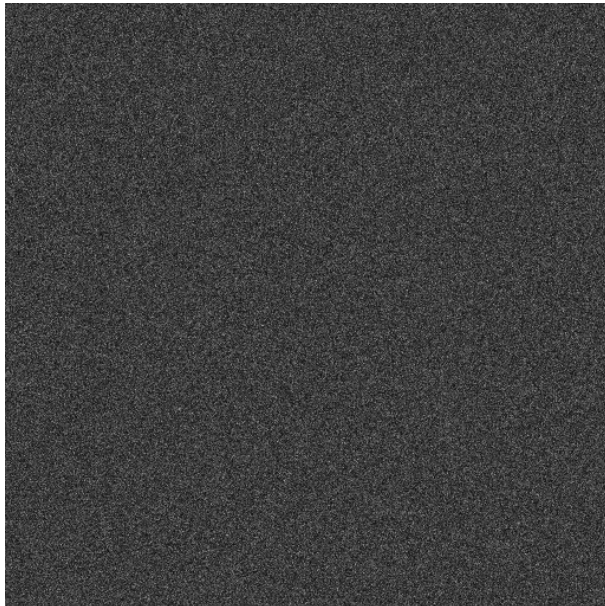
Is (unfortunately) always present

Characterization by source

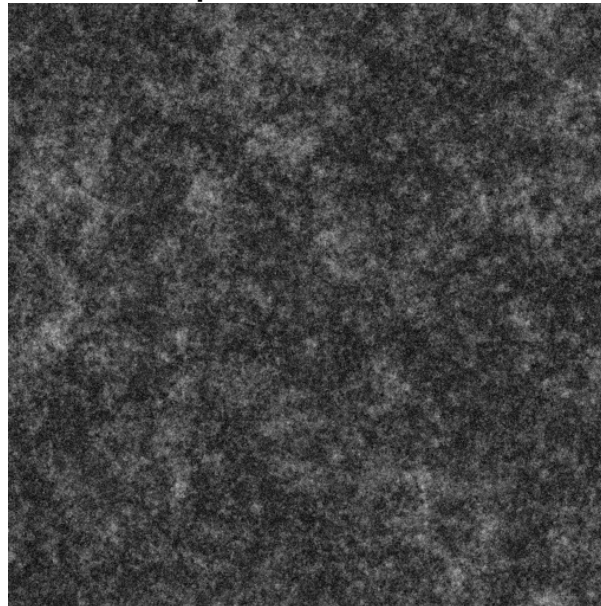
Characterization by density function

Characterization by spatial correlations

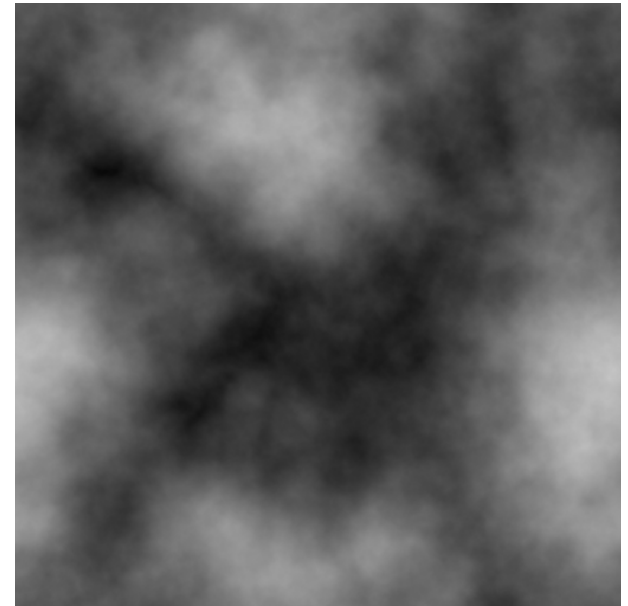
white noise



pink noise



red noise

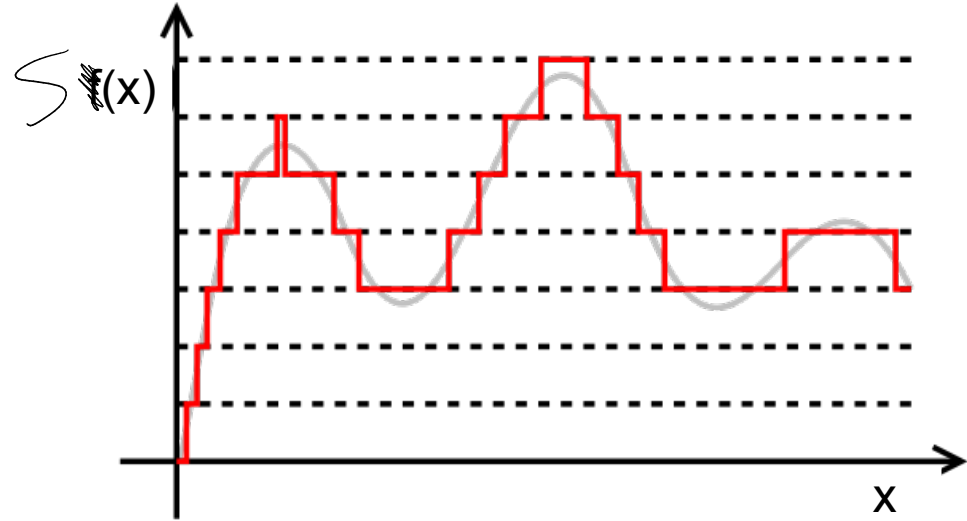


source: <http://www.wikipedia.org>

Signal and contrast

Signal

$$S(x, y)$$



Contrast

$$|S_2 - S_1|$$

Visibility

$$\frac{|S_2 - S_1|}{S_2 + S_1}$$



Contrast and noise

- Higher contrast, higher noise
- constant contrast-to-noise

$$\frac{C}{\sigma}$$

$$\frac{\text{contrast}}{\text{noise}}$$



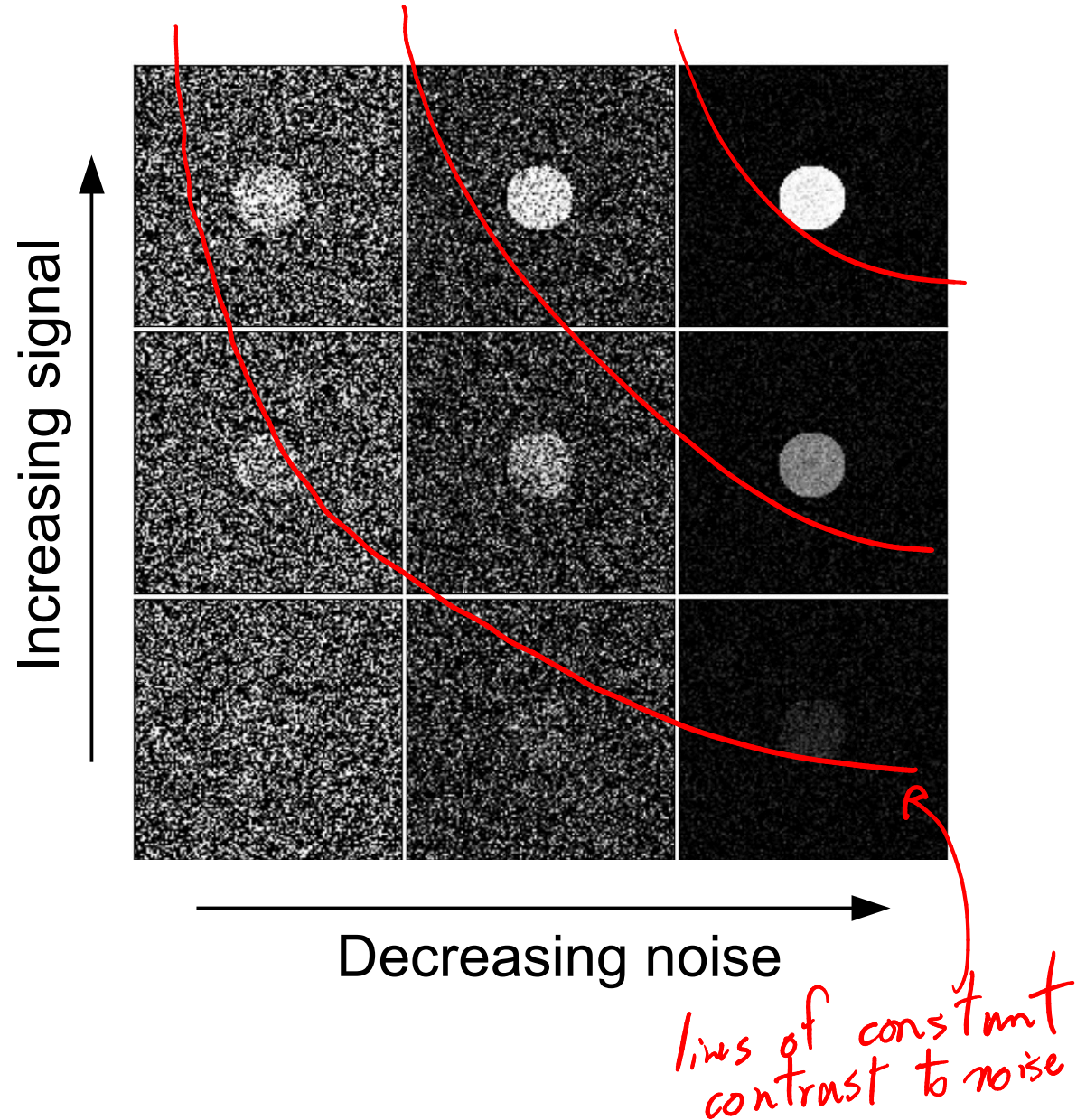
SNR and CNR

Signal-to-noise

S/σ

Contrast-to-noise

C/σ

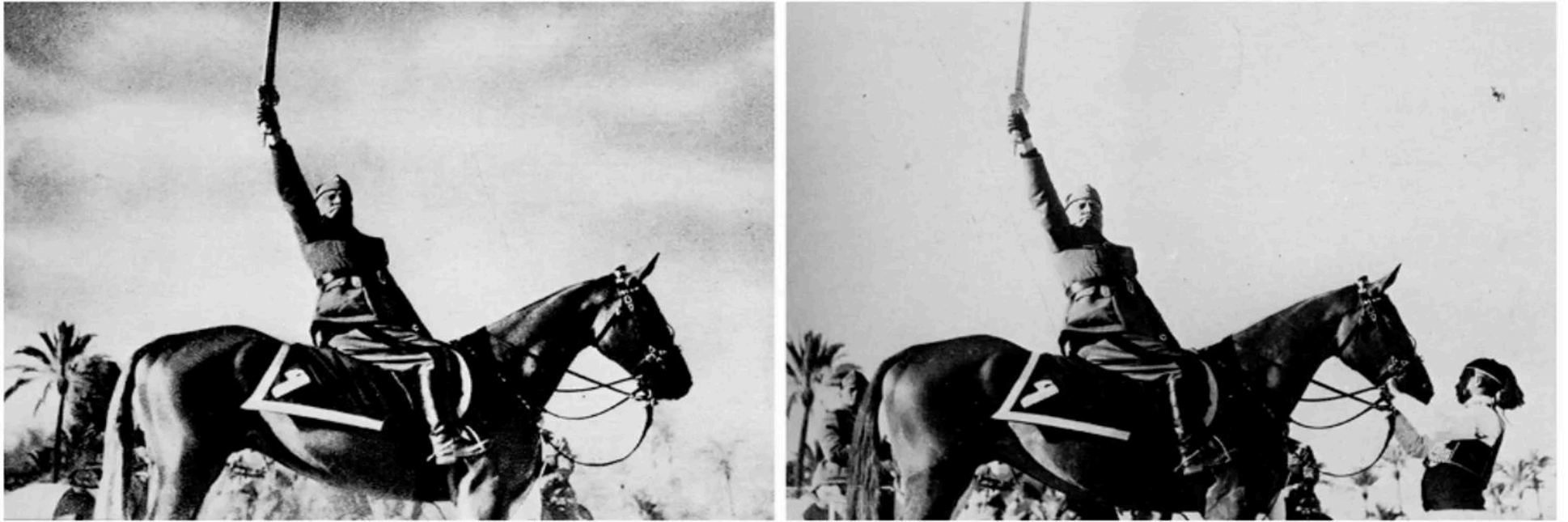


Ethics of image processing



Nikolai Yezhov removed from original photo (1937)

Ethics of image processing



Helper removed from Mussolini's "sword of Islam" photo (1937)

Ethics of image processing

EDITORIALS

NATURE | Vol 439 | 23 February 2006

Not picture-perfect

Nature's new guidelines for digital images encourage openness about the way data are manipulated.

Researchers struggle to amass good data and present them in as clear a fashion as possible. But what do we mean by 'clear' when it comes to images? In days gone by, whether we liked it or not, data acquired at the bench were not much different from what was published. In a biomedical lab, for example, samples

that had been radio-labelled and separated on a gel were recorded on X-ray film. Composite figures were assembled, with lettering carefully placed around the mounted film. If a control was forgotten or a gel was uneven, the graduate student or postdoc was sent back into the lab to get it right 'for publication'. If a speck of dust on the film obscured data in the original photograph, another picture was taken. Slicing films to rearrange the order of samples, or to splice in a control group that was actually part of another gel, was not common because it took almost as much skill to do that as to rerun the experiment.

It is doubtful that scientists were more angelic then than now. It is

Ethics of image processing

EDITORIALS

NATURE | Vol 439 | 23 February 2006

Not picture-perfect

Nature's new guidelines for digital images demand openness about the way data are made

Researchers struggle to amass good data as clear a fashion as possible. But what do you do when it comes to images? In days gone by

it or not, data acquired at the bench were not much different from what was published. In a biomedical lab, for example, samples

that had been radiolabelled and separated on a gel were recorded on opposite figures were assembled, with lettering and the mounted film. If a control was forgotten, the graduate student or postdoc was sent back right 'for publication'. If a speck of dust on the original photograph, another picture was to rearrange the order of samples, or to splice that was actually part of another gel, was not took almost as much skill to do that as to rerun the experiment.

"In short, any digital technique that isn't applied to the entire image is suspect and needs to be explicated to the reader."

the experiment.

It is doubtful that scientists were more angelic then than now. It is

Multichannel images

When spatial information is more than a scalar



Source: <http://apod.nasa.gov/apod/ap070505.html>

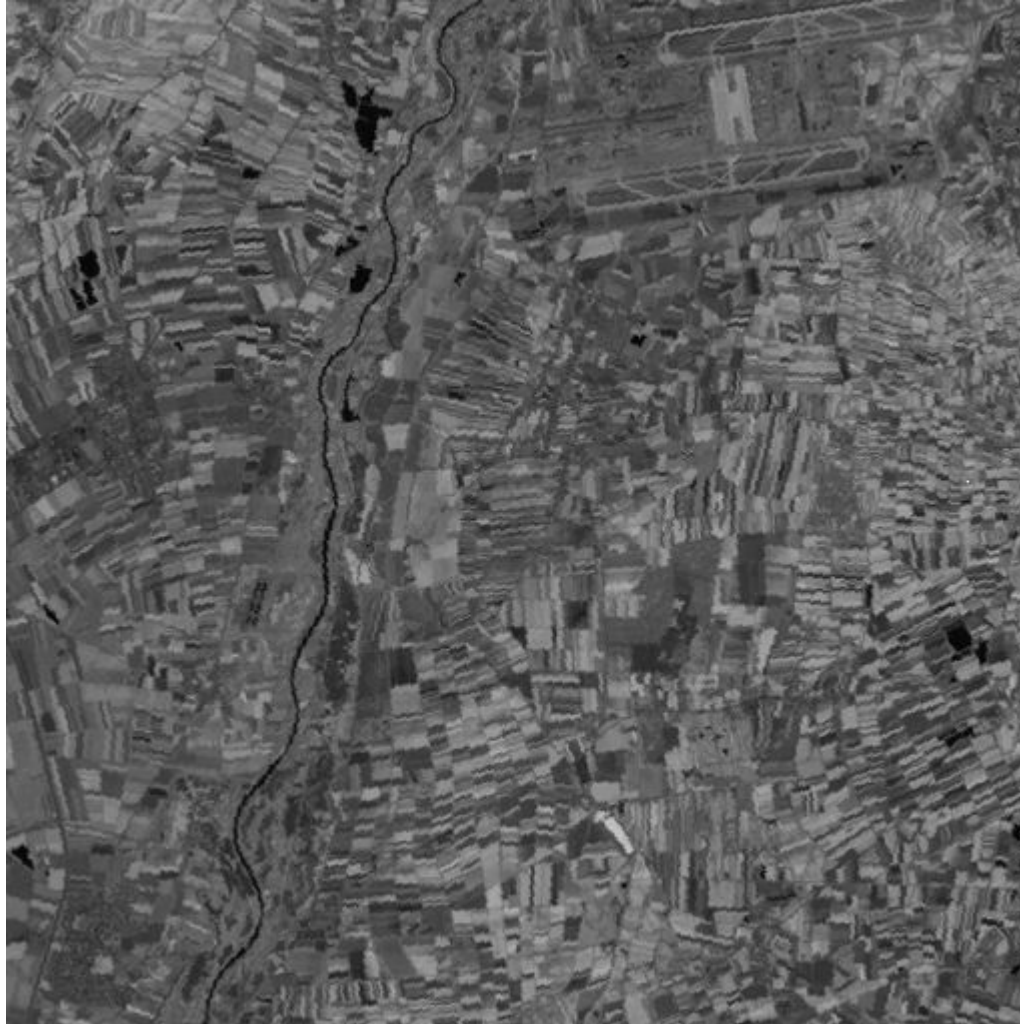
Multichannel images



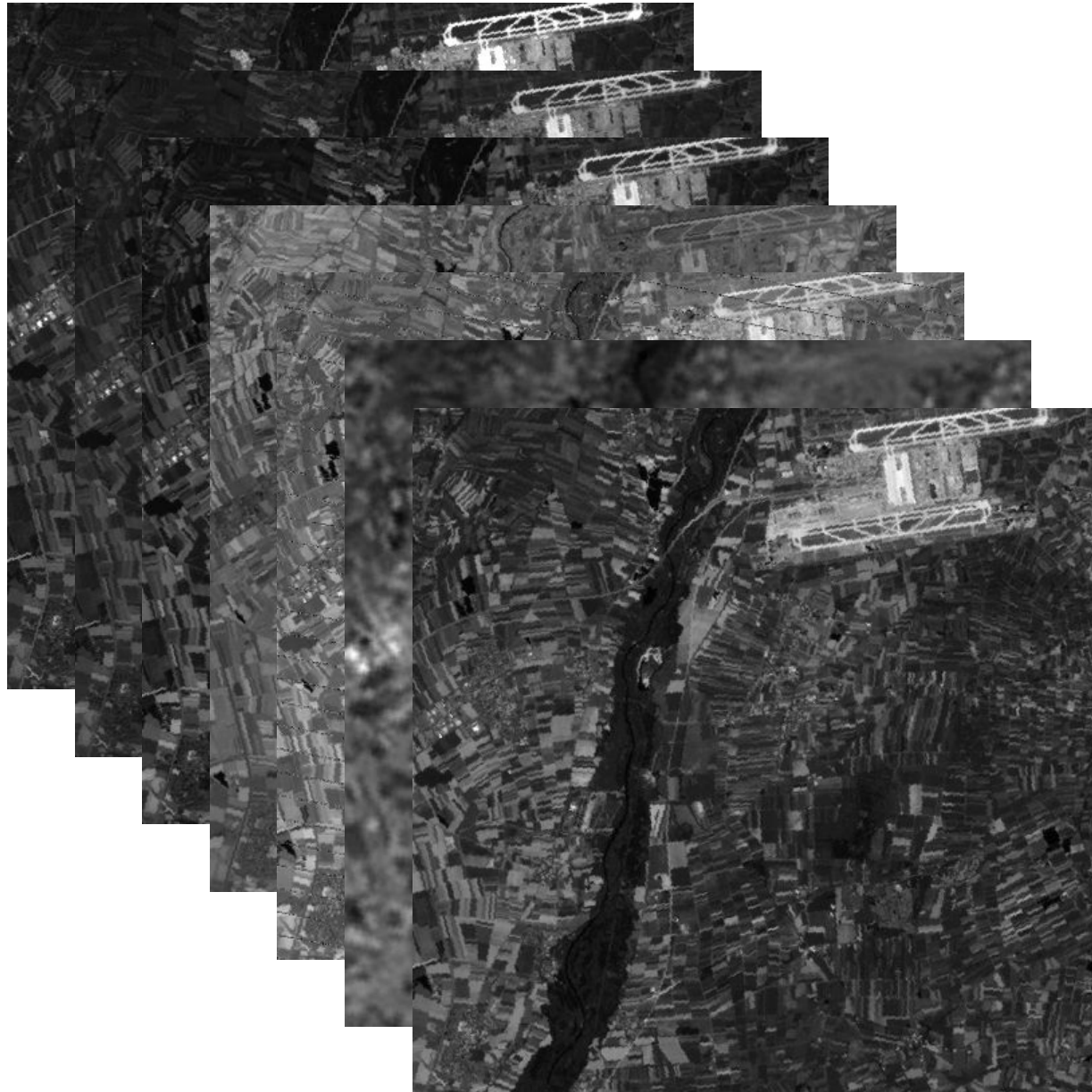
Multichannel images



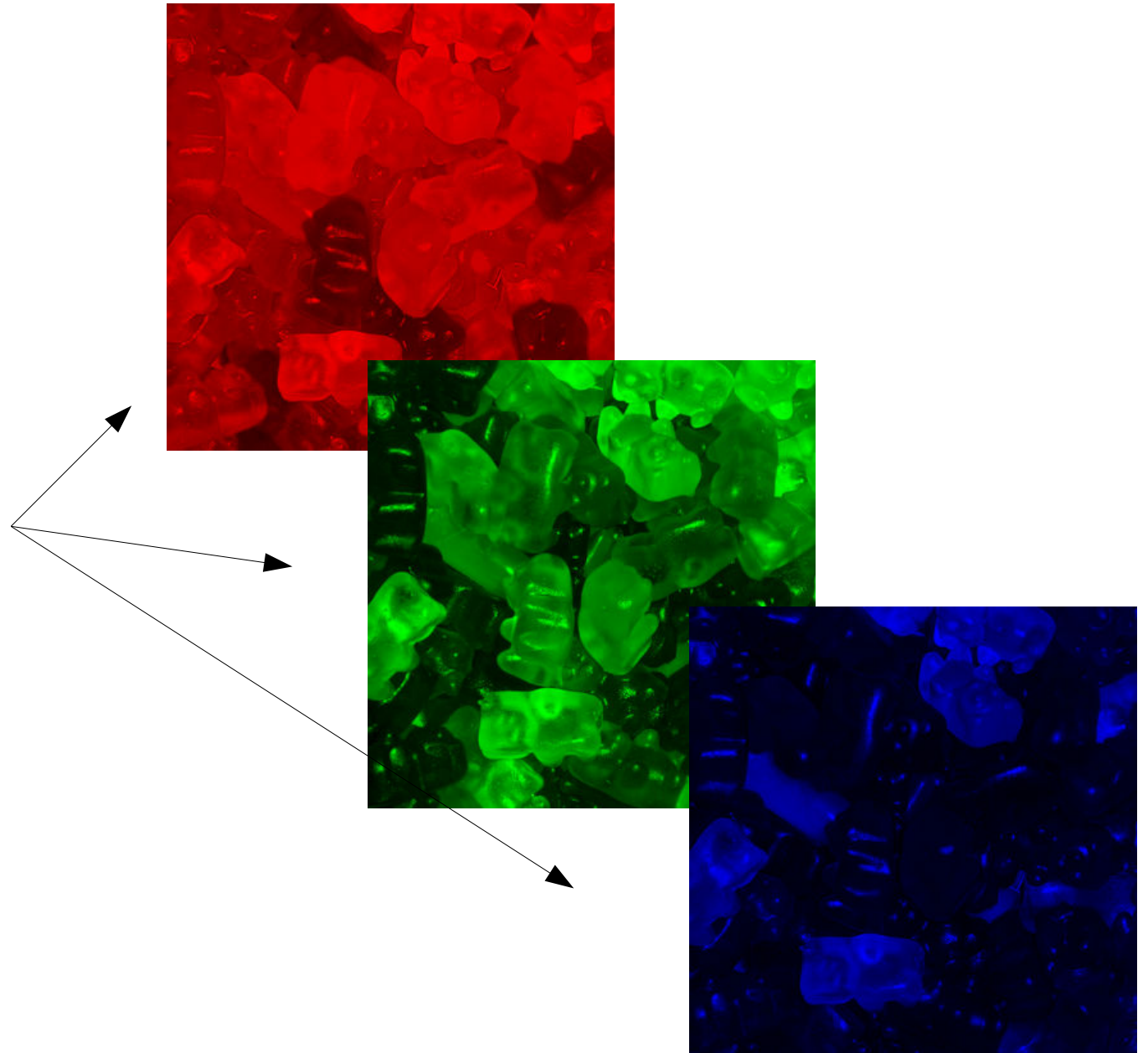
Multichannel images



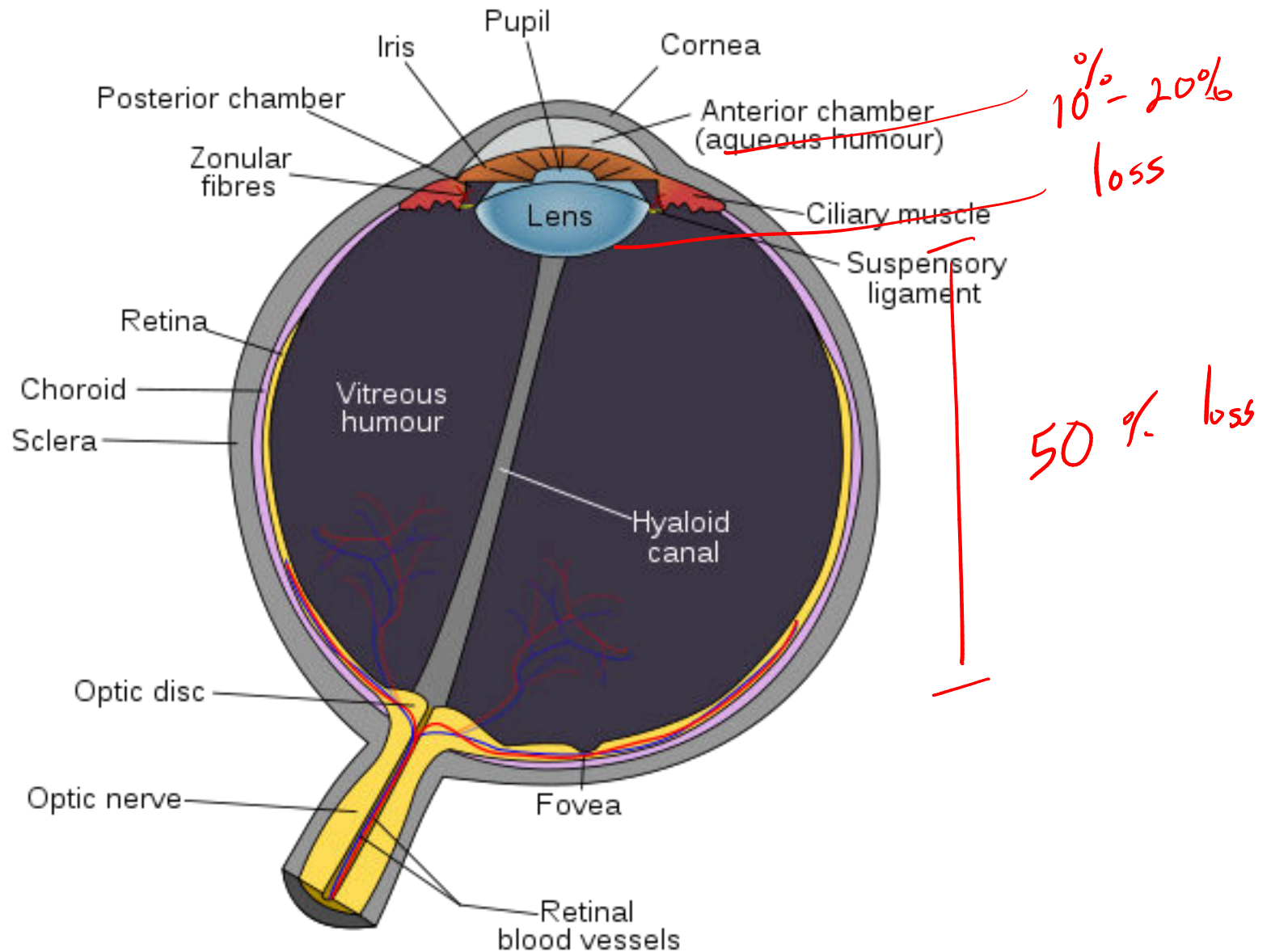
Multichannel images



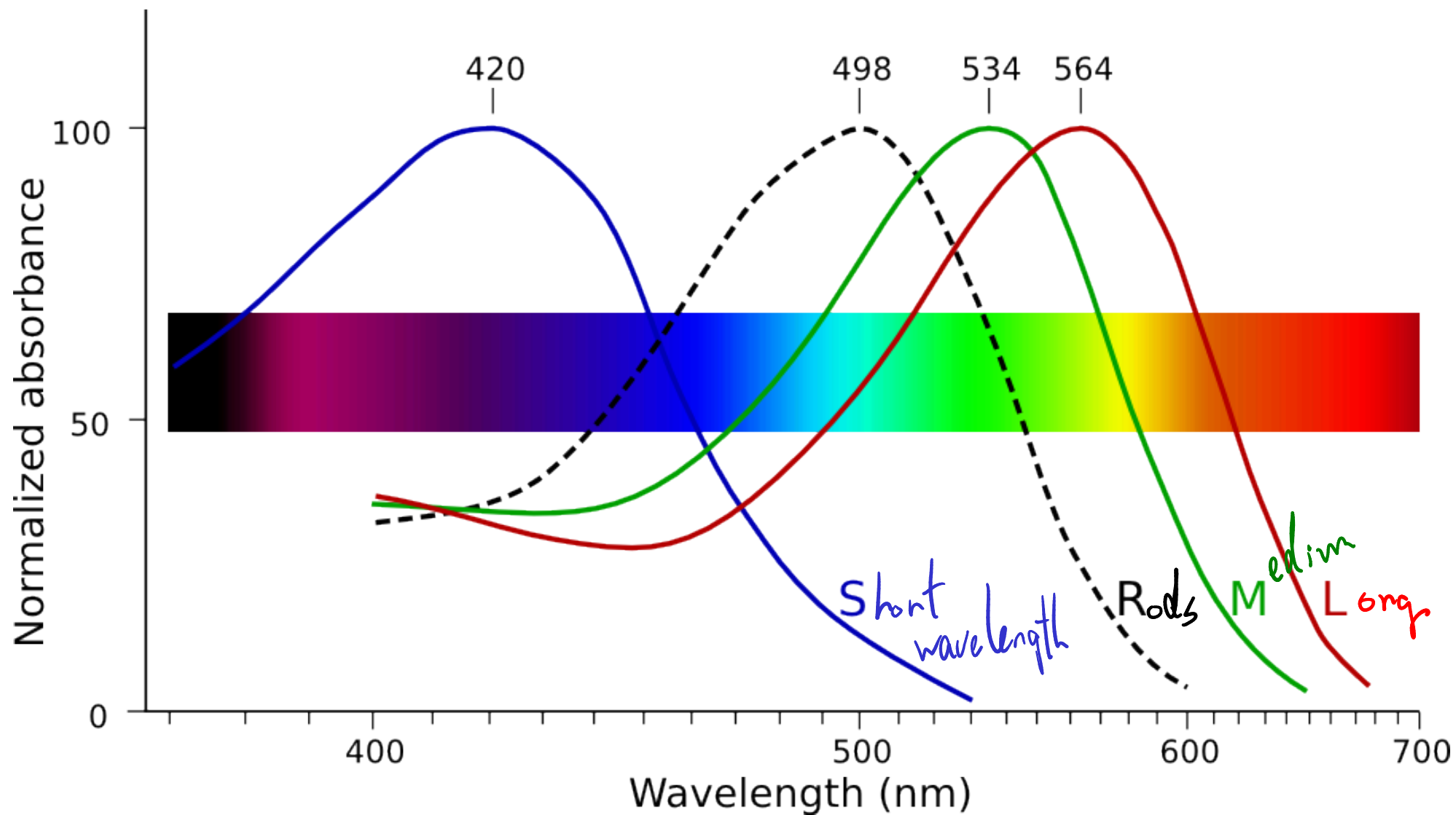
3-channel images



The eye as a light detector



The eye as a detector

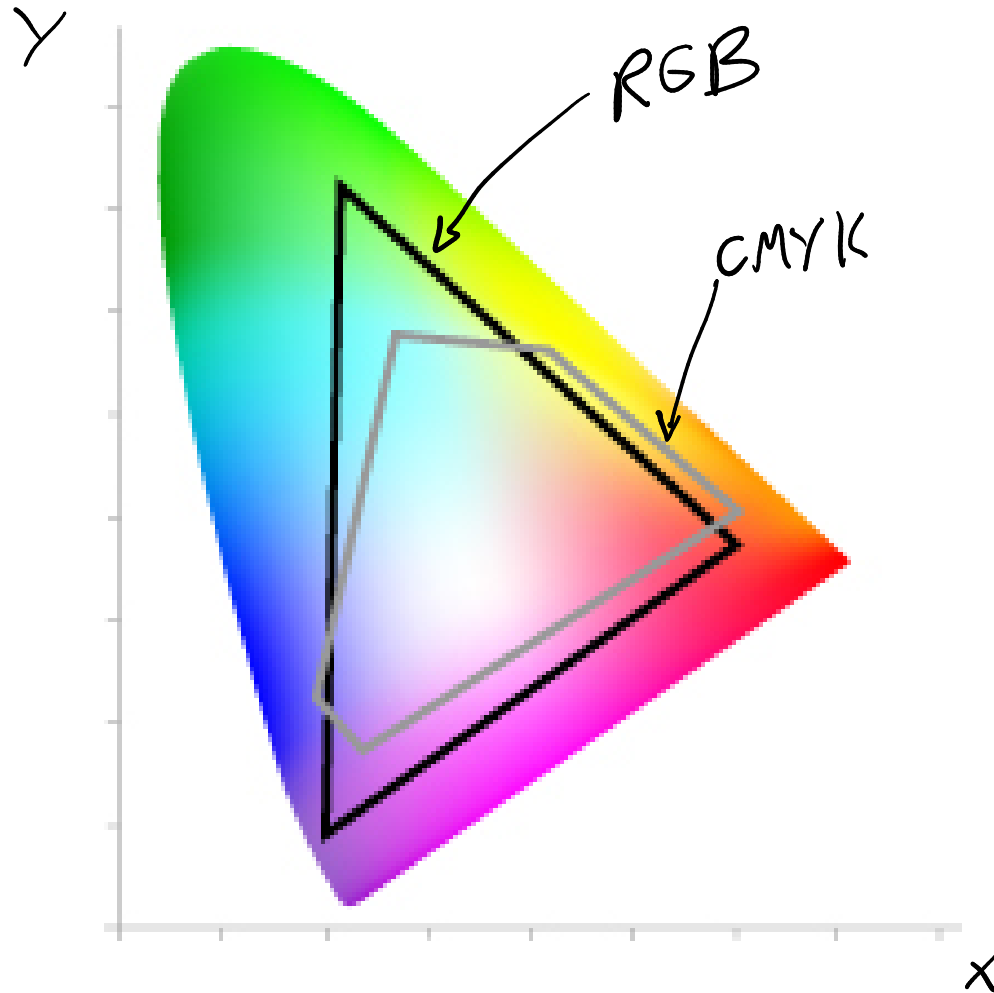


Color spaces

- Real signal : LMS (cone response)
- Standard: CIE XYZ
 - “Commission Internationale de l'éclairage”
 - XYZ : just a linear transform from LMS
- Most displays: RGB
 - Again, just a linear transform from XYZ
- Most printed support: CMYK
 - Go to 4 colors to save ink (maximize black)

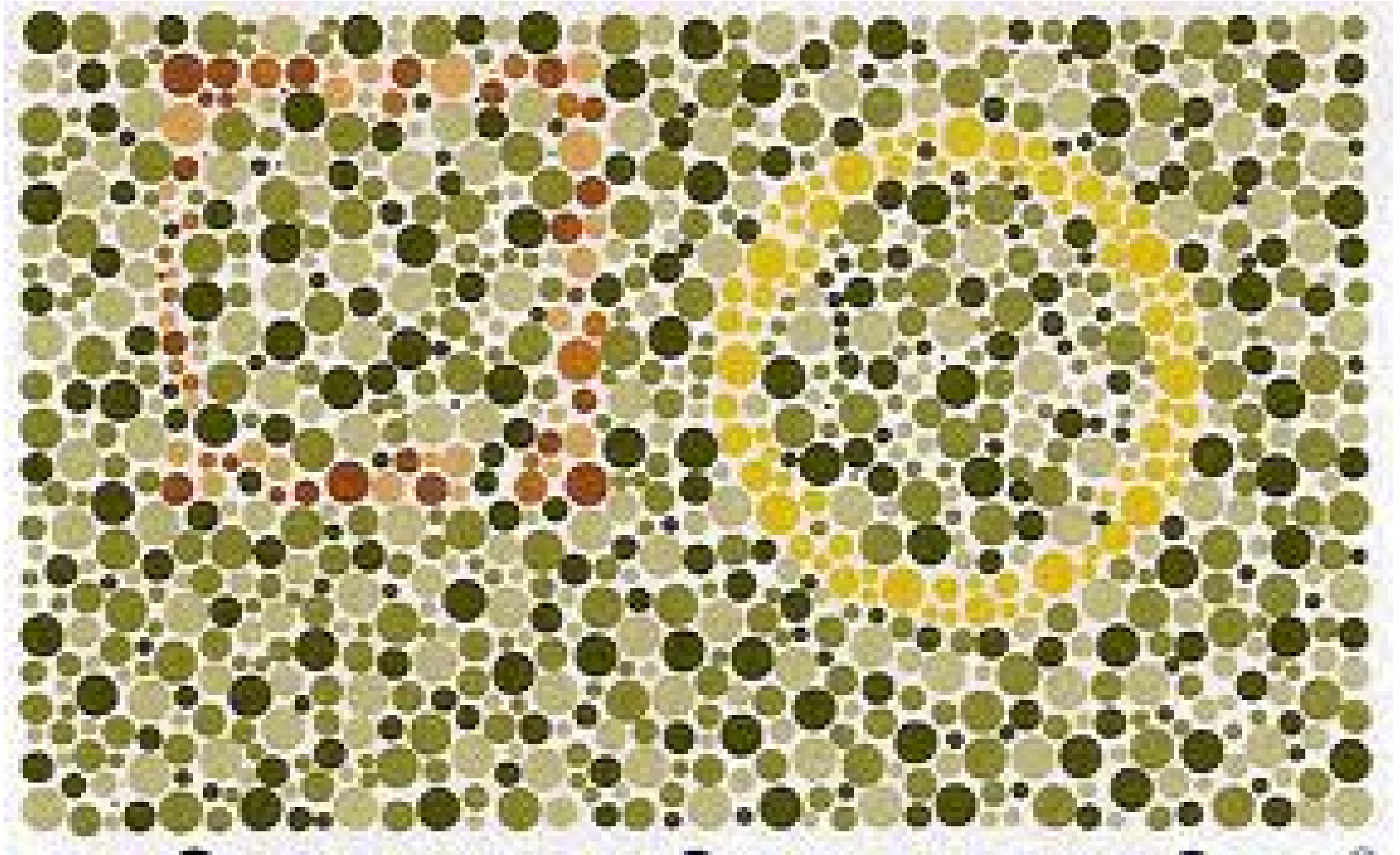
Color spaces

Gamut



Source: <http://de.wikipedia.org/wiki/Lab-Farbraum>

Color vision deficiencies

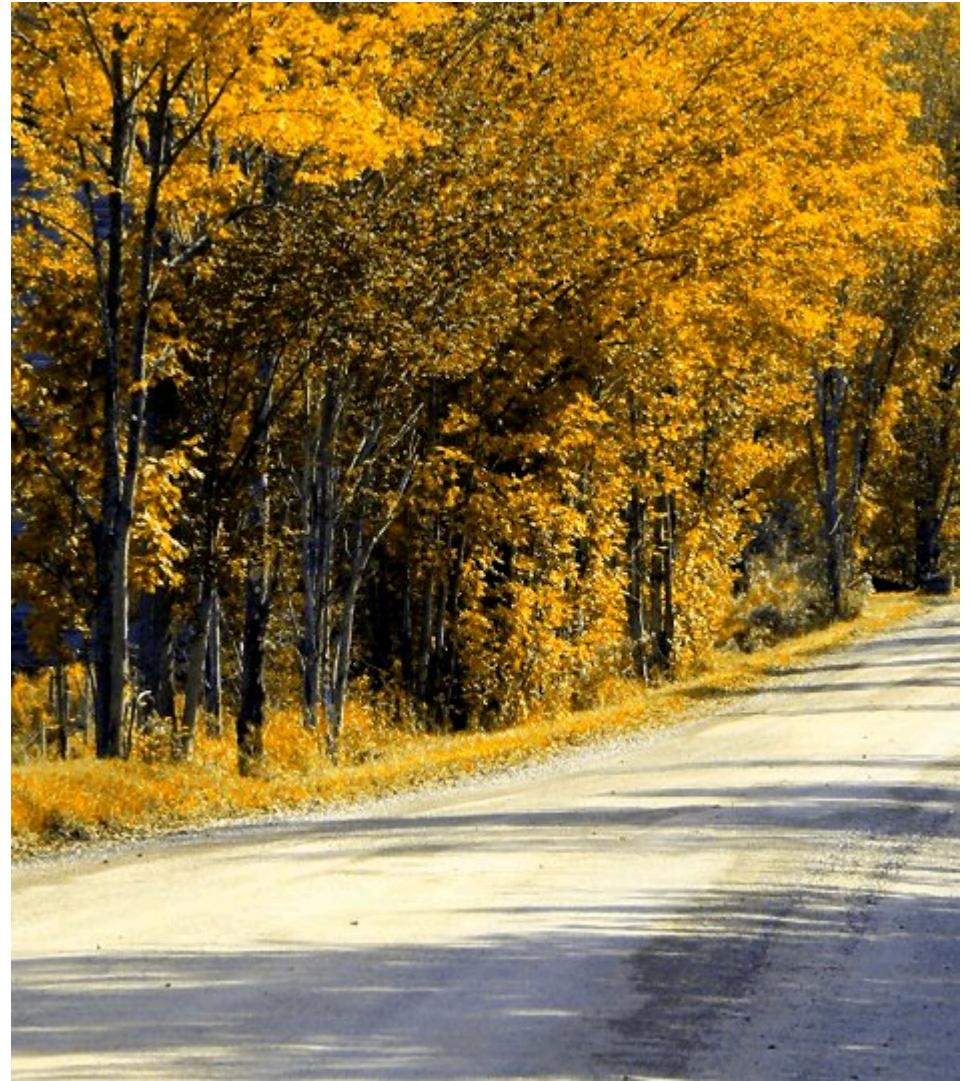


Color vision deficiencies

Normal vision



Deuteranopia (insensitivity to green)



The human eye

The good

- Good spatial resolution ($< 1\text{mm}$)
- Very large dynamic range ($> 10^6$) and automatic threshold
- Energy discrimination (colors)
- Long life-time, energy efficient, low carbon footprint

The bad

- Relatively low sensitivity (> 500 photons/s to register a conscious signal)
- Low speed (10 Hz)
- Slow trigger

Image storage

- TIFF:
 - high dynamic range possible
 - lossless and lossy compression
 - JPG:
 - lossy compression
 - PNG:
 - lossless compression
 - ...
 - For scientific purposes: select the format that incurs no data degradation (TIFF, other general data formats (HDF, ...))
- 