

# STRUTTURE DEFORMATIVE

- DEFORMAZIONI PENECONTEMPORANEE
- AGENTI FISICI, CHIMICI O BIOLOGICI

# Load casts (strutture di carico)

STRUTTURE LEGATE A  
GRAVITA'

NO VERGENZA , MA  
PUNTANO  
AL CENTRO DELLA TERRA

sono controimpronte





Ball-and-pillow structures (caused by soft-sediment deformation) in the Pebbley Beach Formation ([Permian](#)), [New South Wales](#)



Cross-sectional view of deformed beds caused by soft-sediment deformation in the Booti Booti Sandstone (Mississippian), New South Wales.

# Load structures





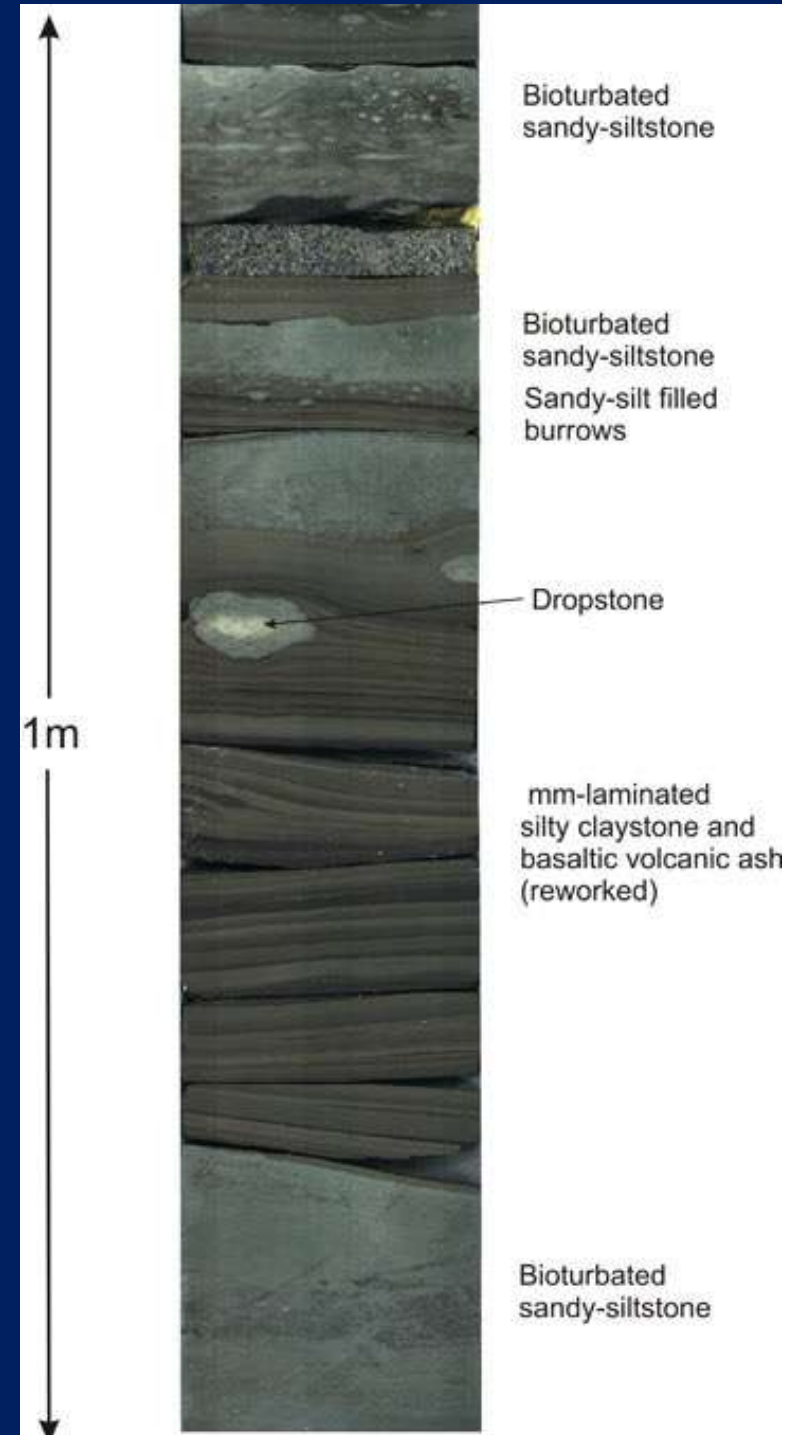
Load and flame structures. Ordovician Goose Tickle Group, western Newfoundland, Canada.



Ball-and-pillows structures



# dropstone



Bioturbated sandy-siltstone

Bioturbated sandy-siltstone  
Sandy-silt filled burrows

Dropstone

mm-laminated silty claystone and basaltic volcanic ash (reworked)

Bioturbated sandy-siltstone

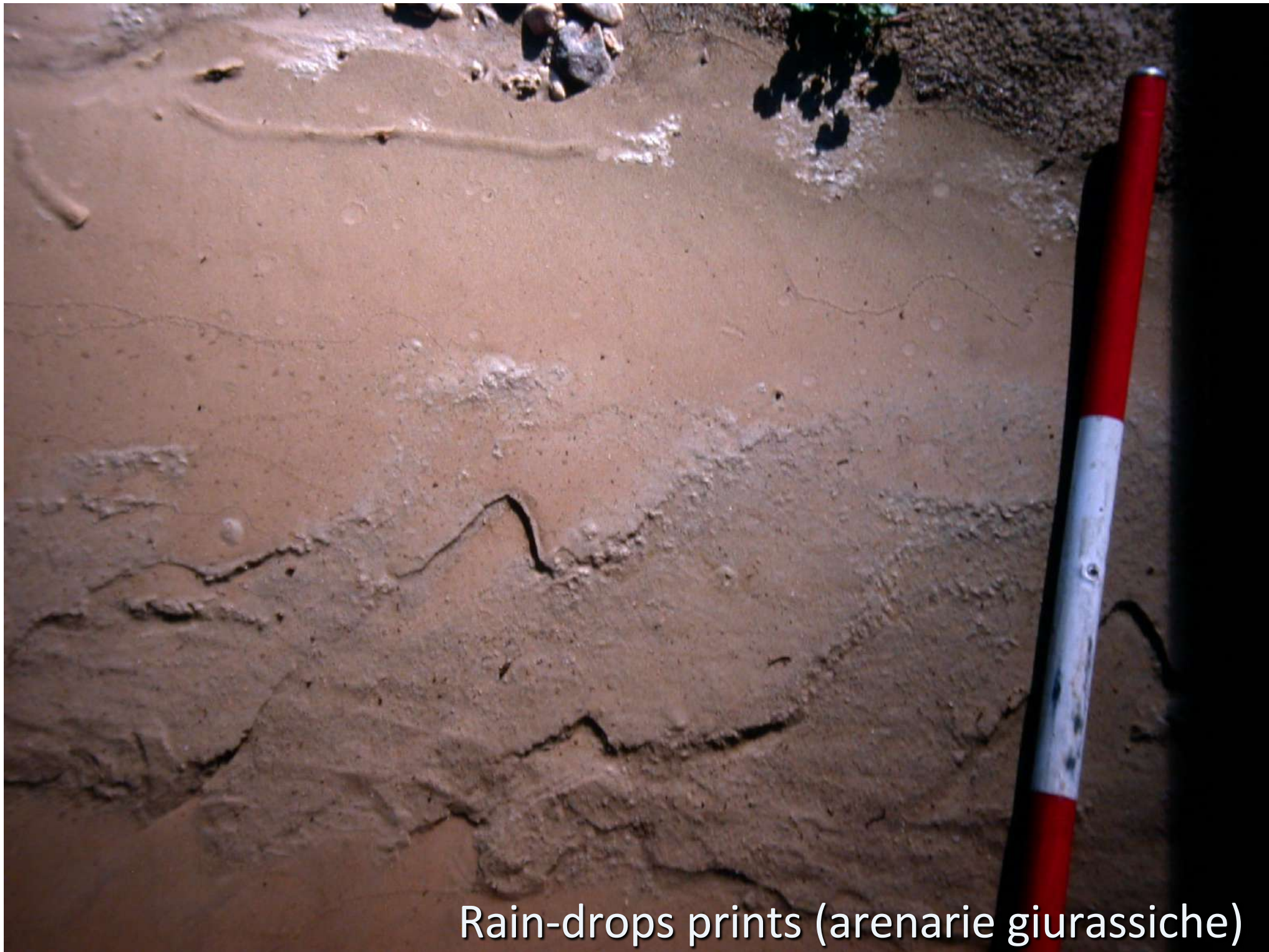
1m



# Impronte di pioggia in fanghi carbonatici attuali



Rain drop – rain spot



Rain-drops prints (arenarie giurassiche)

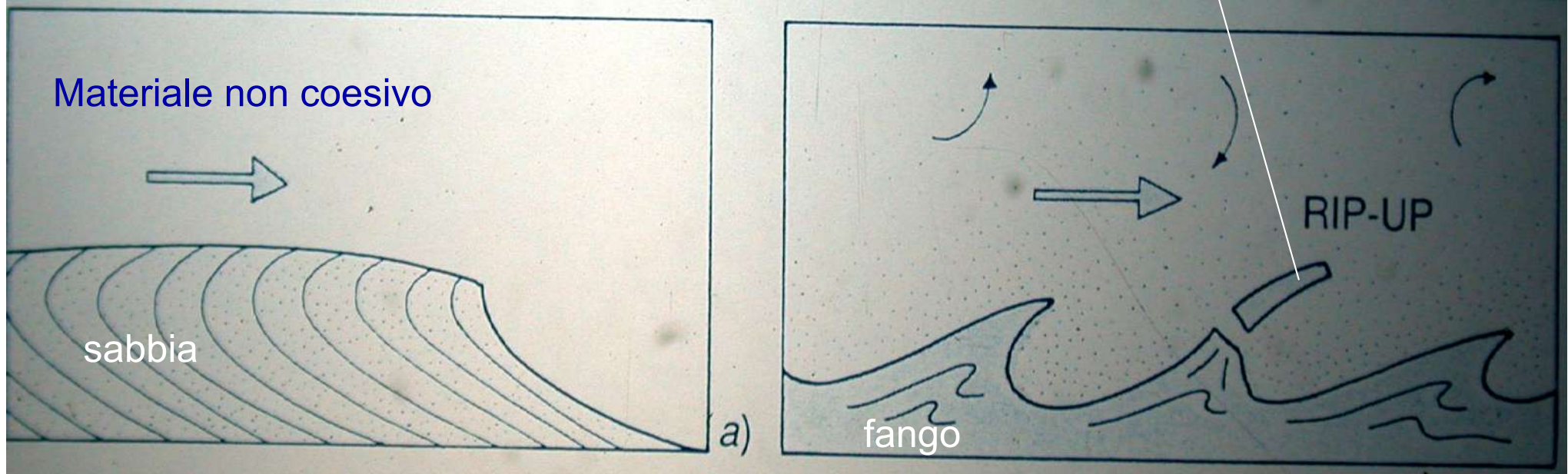
Rain-drops prints  
in arenarie fluviali  
(fossili)



# Laminazioni convolute

## Deformazioni da trascinamento esercitate da correnti trattive

Produzione di clasti pelitici intraformazionali

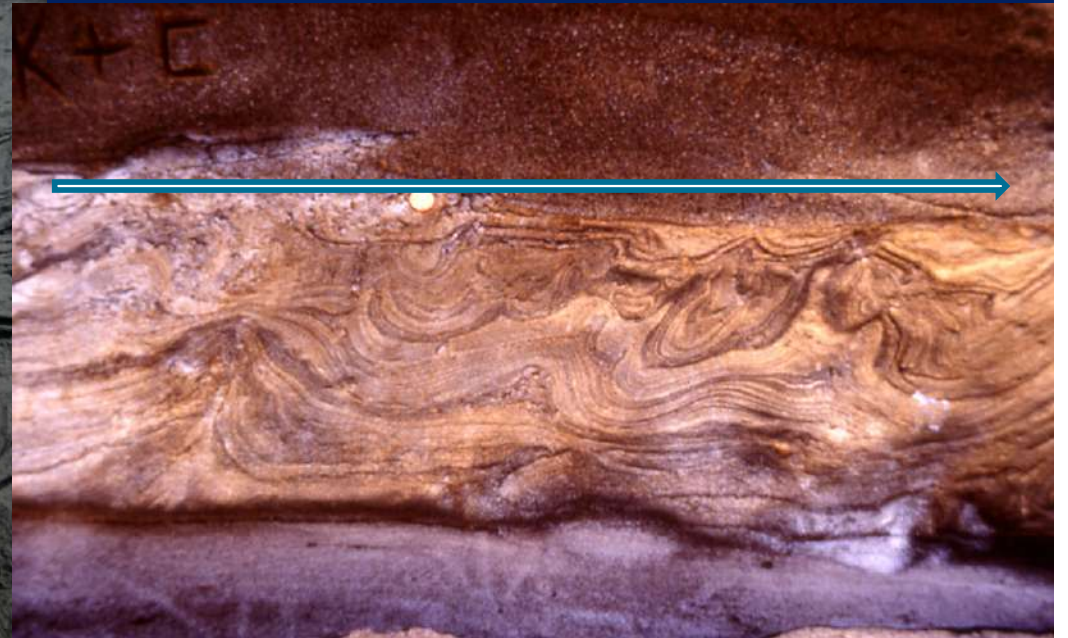


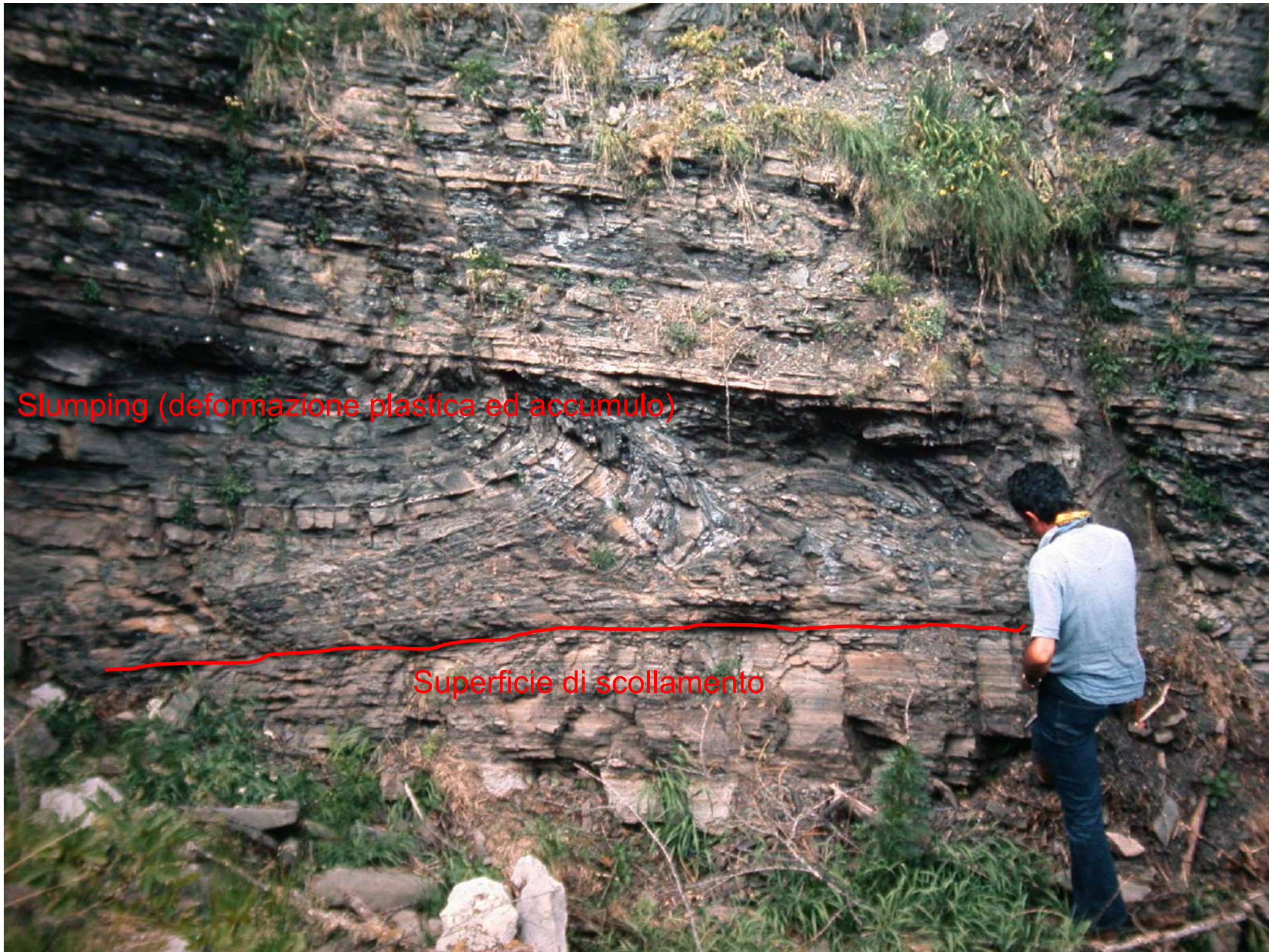
Deformazioni di strutture precedentemente formate

# Convoluzioni in torbiditi (Tc)



# Convoluzioni in torbiditi





Slumping (deformazione plastica ed accumulo)

Superficie di scollamento



Deformazioni idroplastiche (seismite, Mar Morto)



# Dish and pillars



Movimento verso l'alto e lateralmente di acqua interstiziale

Flusso fluidificato – deforma il Tb



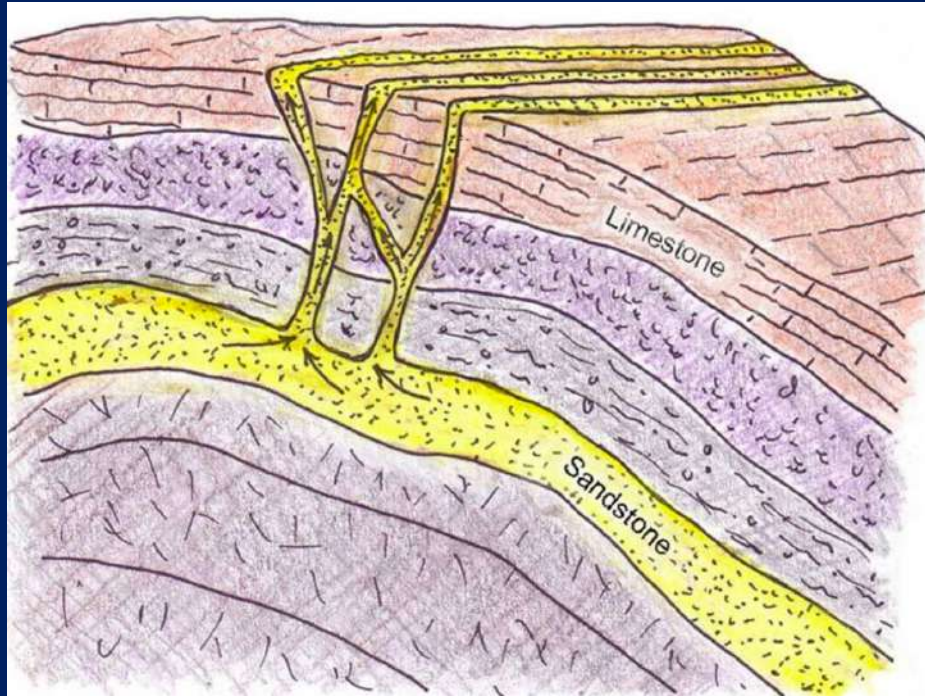
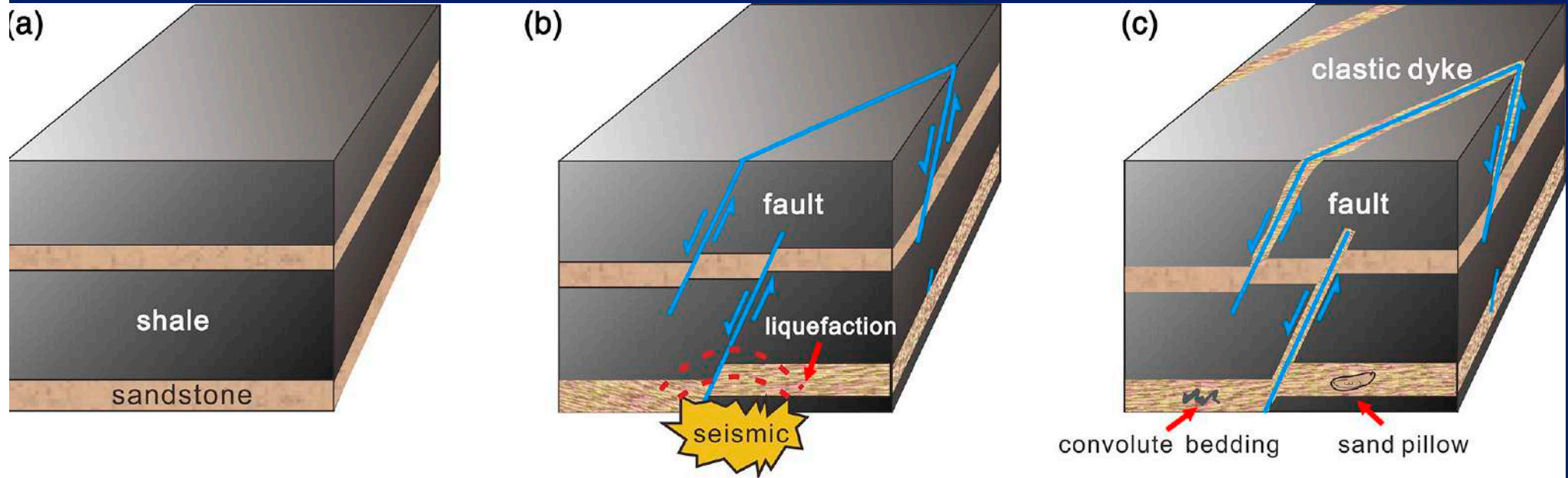


Filoni  
sedimentari

Neptunian  
Dikes  
(riempimento)



Clastic dike (iniezione)



**Clastic dike (iniezione)**

# Mud-cracks o fanghi poligonali



Strutture dovute a contrazione

# Dimensioni dei fanghi poligonali

