

Data Visualization

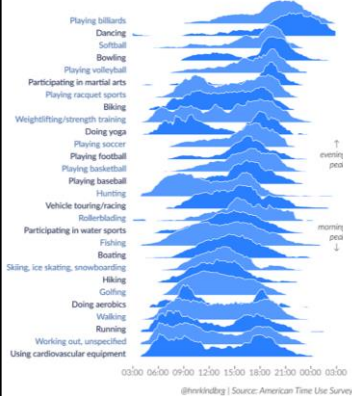
ASSIGNMENT 2: RESULTS

Tea Tušar, Data Science and Scientific Computing, Information retrieval and data visualization

Peak time of day for sports and leisure (1 & 2)

Peak time of day for sports and leisure

Number of participants throughout the day compared to peak popularity. Note the morning-and-evening everyday workouts, the midday hobbies, and the evenings/late nights out.



Peak time for sports and leisure

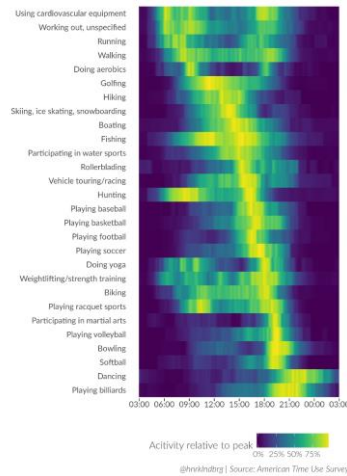
(@henkhubing | Source: American Time Use Survey)



<https://github.com/halhen/viz-pub/tree/master/sports-depeche-plot>

<https://github.com/halhen/viz-pub/tree/master/sports-time-of-day>

Peak time of day for sports and leisure (3)



<https://github.com/halhen/viz-pub/tree/master/sports-time-of-day>

3

Assignment 2: Make your own visualization

Data from <https://github.com/halhen/viz-pub/tree/master/sports-depeche-plot>

- o **activity.tsv** contains the relative number of participants throughout the day
- o **growth.tsv** contains the growth factor (visualized by line slope in the second visualization)

Visualize this data any way you want

5 responses

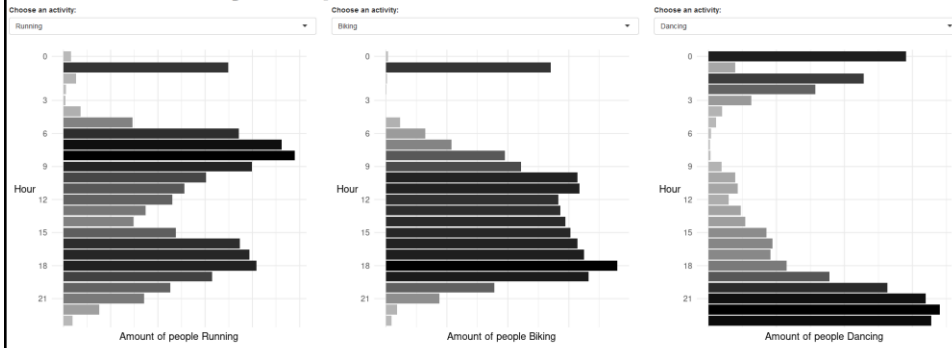
This is not a group task, work on it individually

Send the visualizations to me via a private chat on Teams by **Friday, October 6**

4

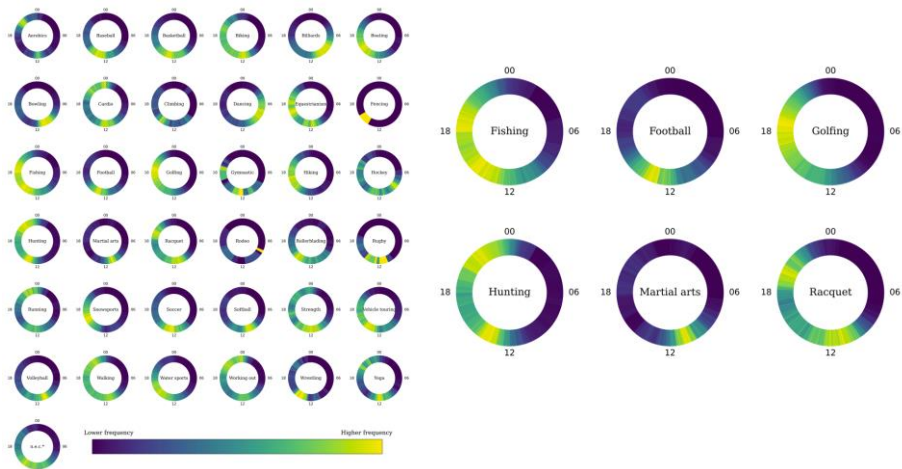
Interactive bar charts

Peak time of day for sports and leisure



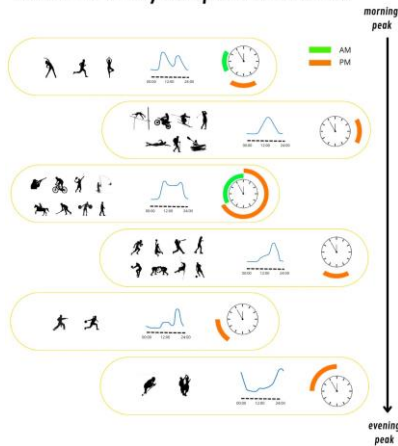
The plots have been obtained by computing the mean frequency of people doing an activity, grouped by hours.
For instance, the group corresponding to hour 12 is composed of observations from 11:30 to 12:30.
Beware that the x-axis is not on the same scale among different plots, the purpose of this visualization is solely to analyze the peak time of the day for sports and leisures, without accounting for the actual amount of people doing such activities.

Small multiples of circular heatmaps



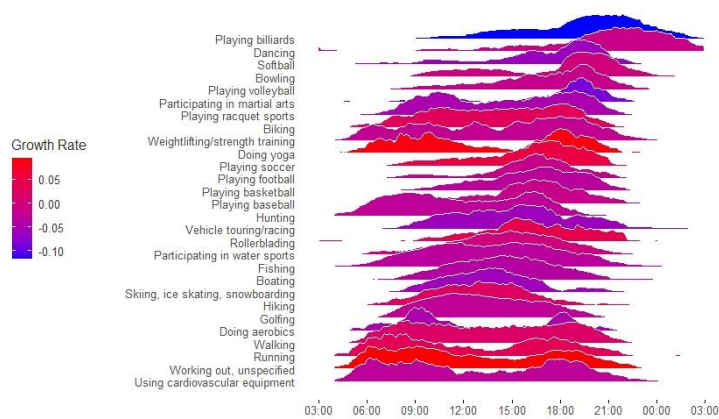
Custom infographic

Peak time of day for sports and leisure

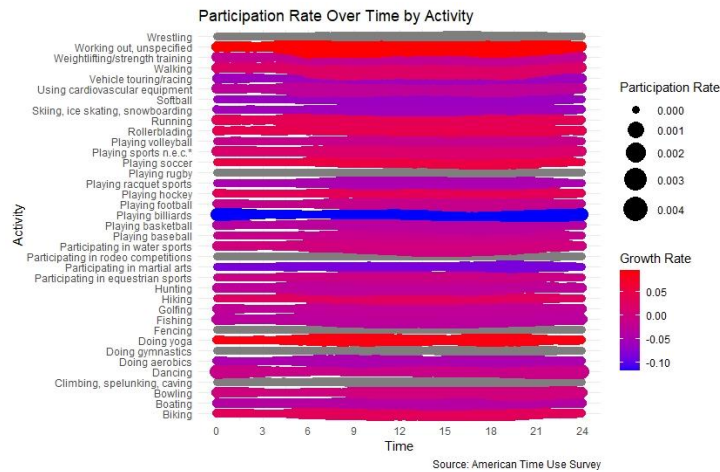


Small multiples of area plots

Peak time of the day and growth for sport and leisuress



Small multiples of bubble charts



Small multiples of circular area plots

