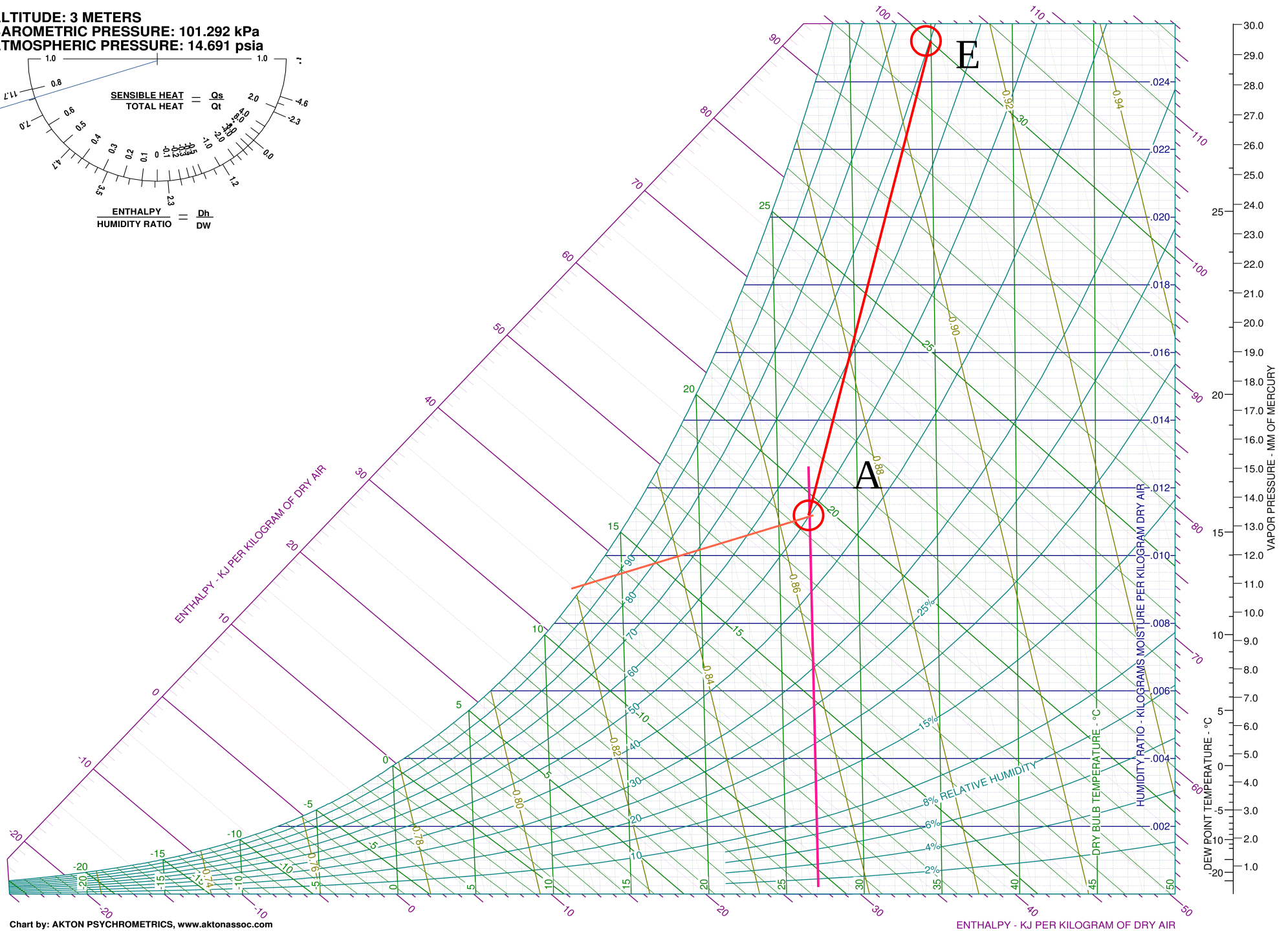
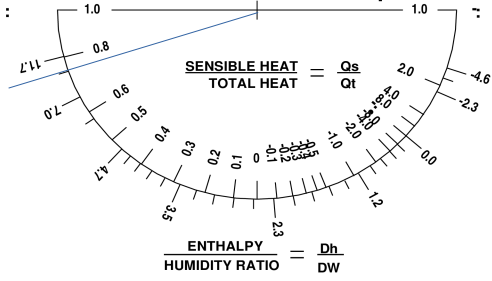


ALTITUDE: 3 METERS
BAROMETRIC PRESSURE: 101.292 kPa
ATMOSPHERIC PRESSURE: 14.691 psia



ALTITUDE: 3 METERS
BAROMETRIC PRESSURE: 101.292 kPa
ATMOSPHERIC PRESSURE: 14.691 psia

