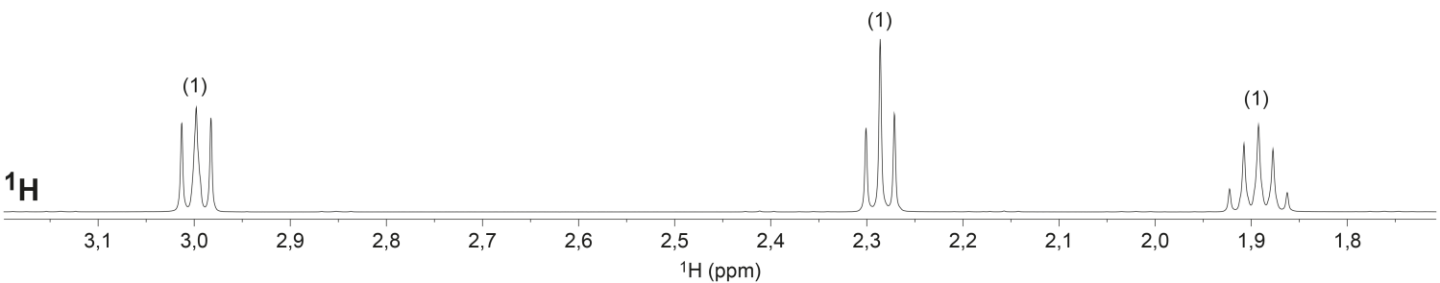
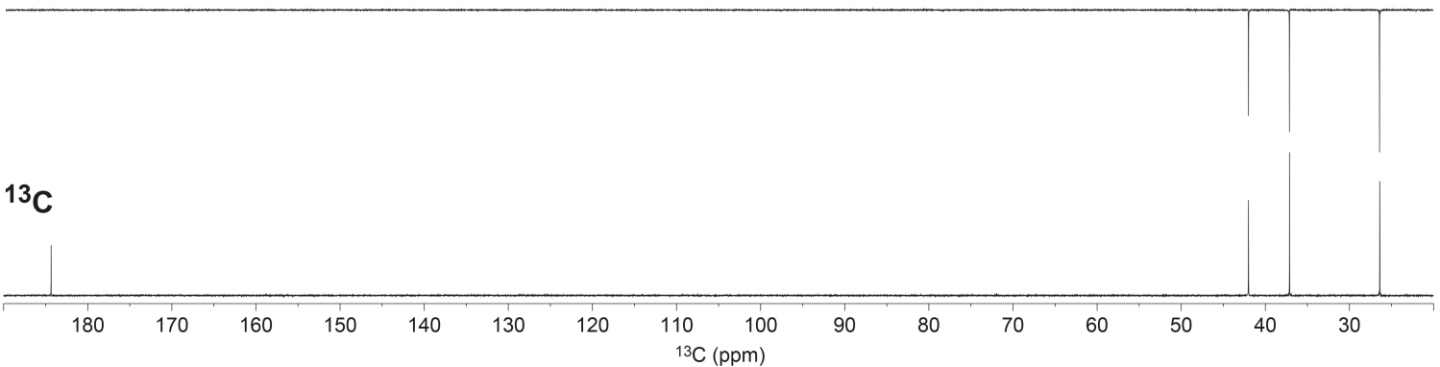
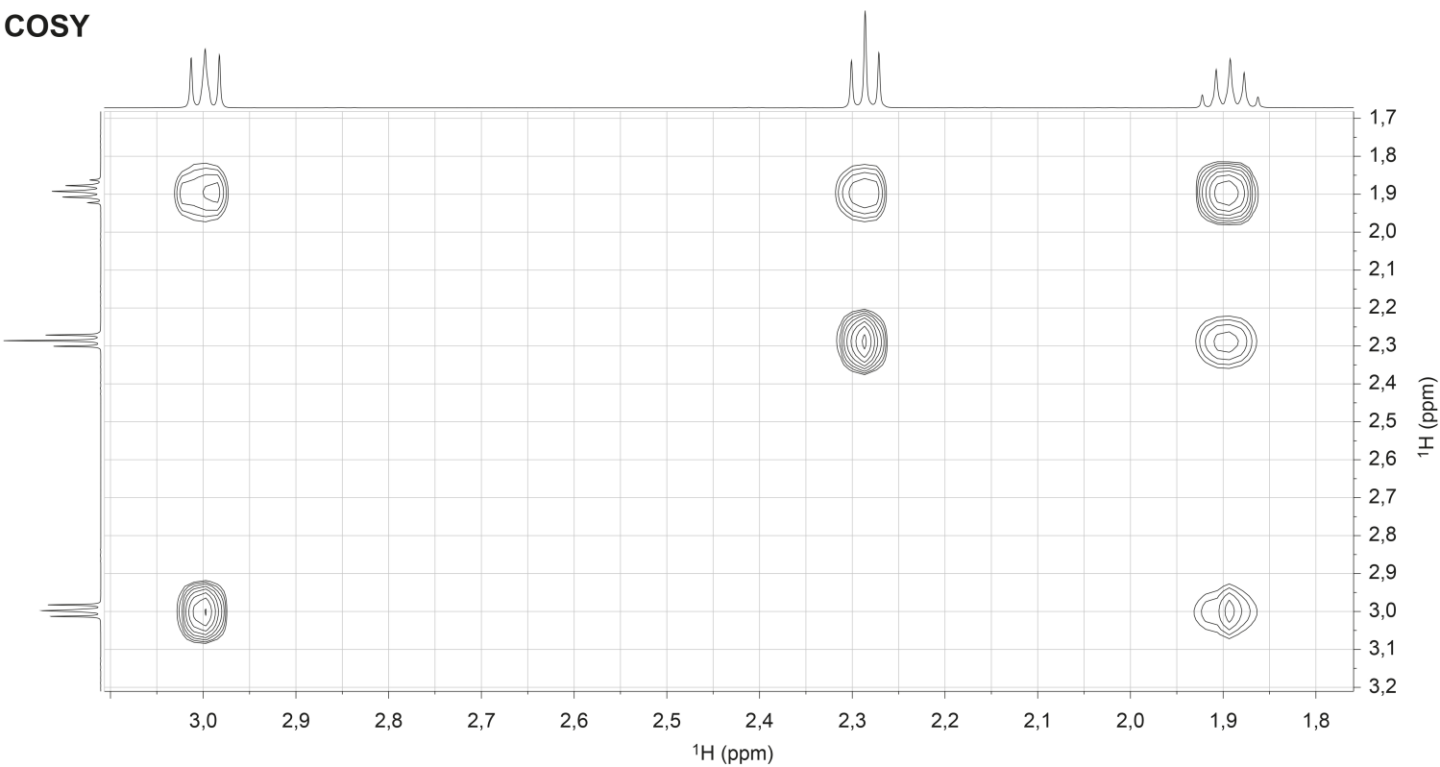
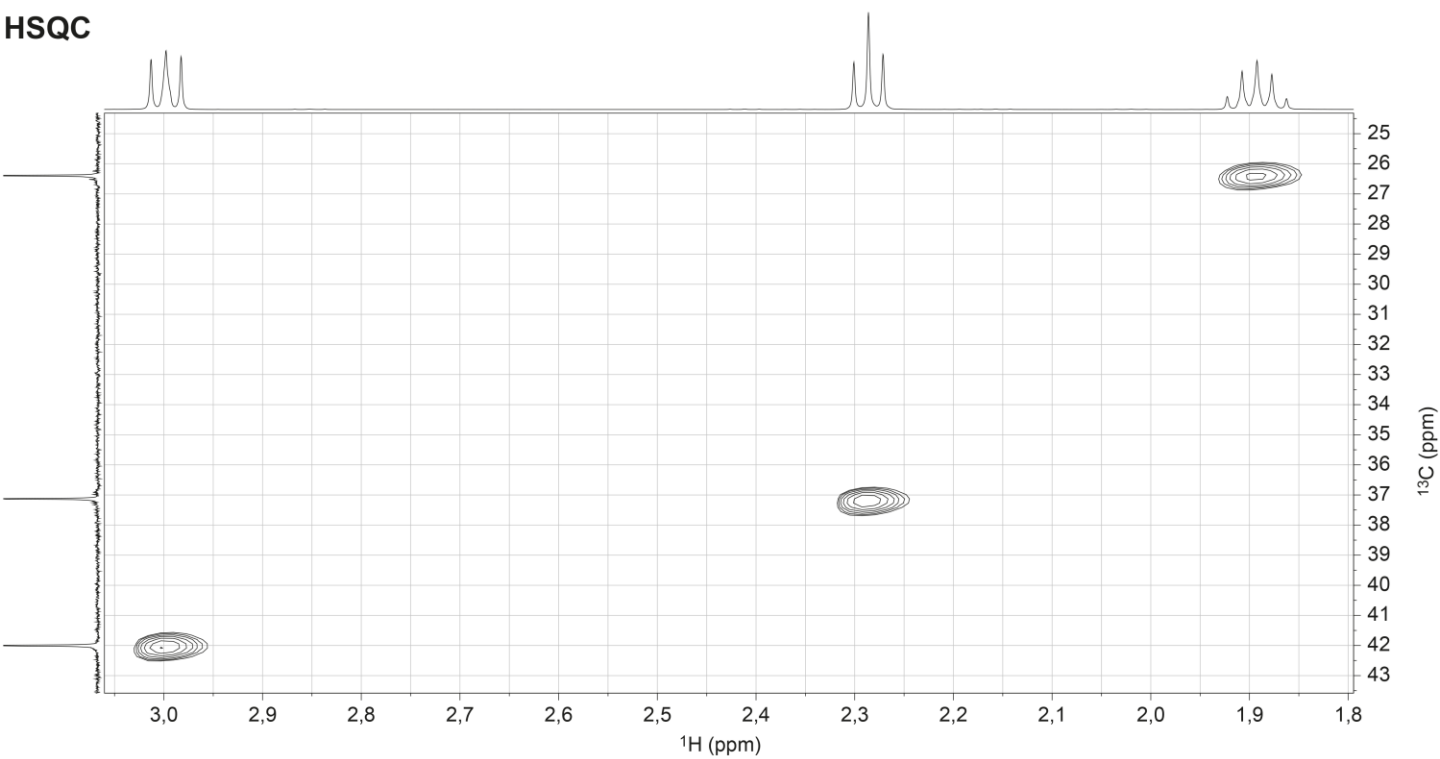


Esercizio 8.9Formula molecolare: $C_4H_9NO_2$

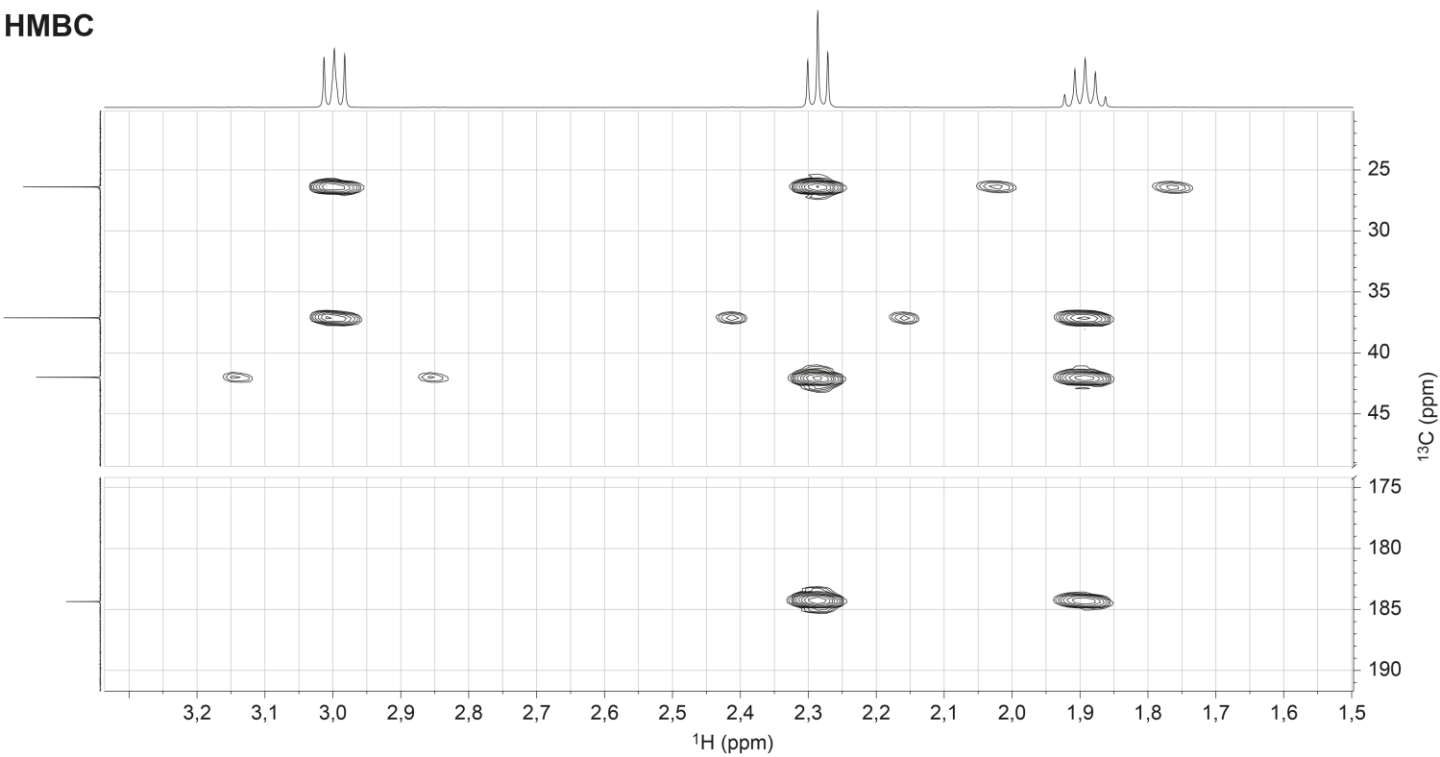
Difficoltà ★☆☆☆

Solvente: D_2O Campo: 500 MHz (1H); 125 MHz (^{13}C)**DEPT 135****COSY**

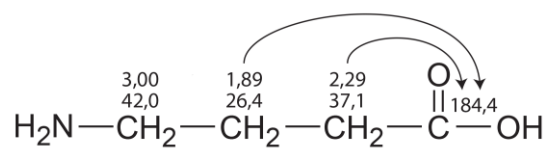
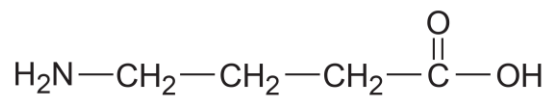
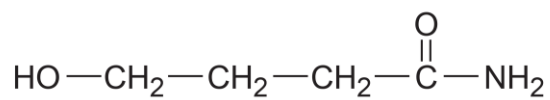
HSQC



HMBC



3,00	2,29	1,89	
42,0	37,1	26,4	184,4
CH ₂	CH ₂	CH ₂	C



HMBC

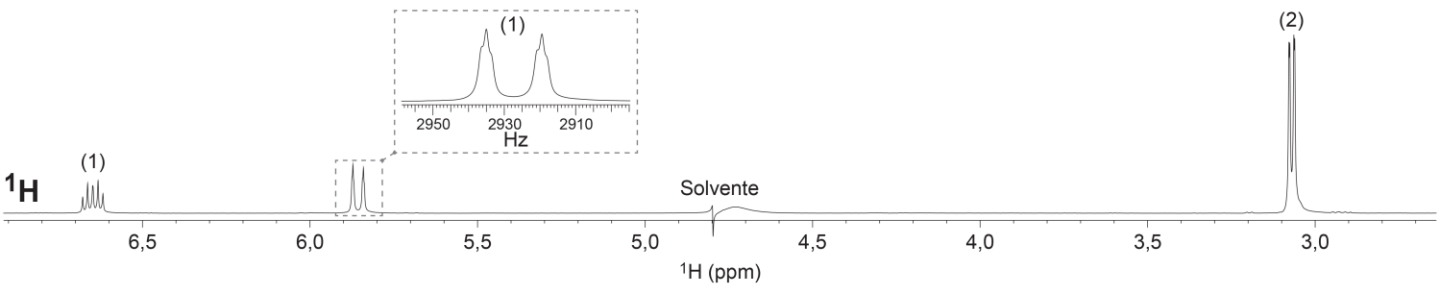
Esercizio 8.10

Formula molecolare: $C_5H_6O_4$

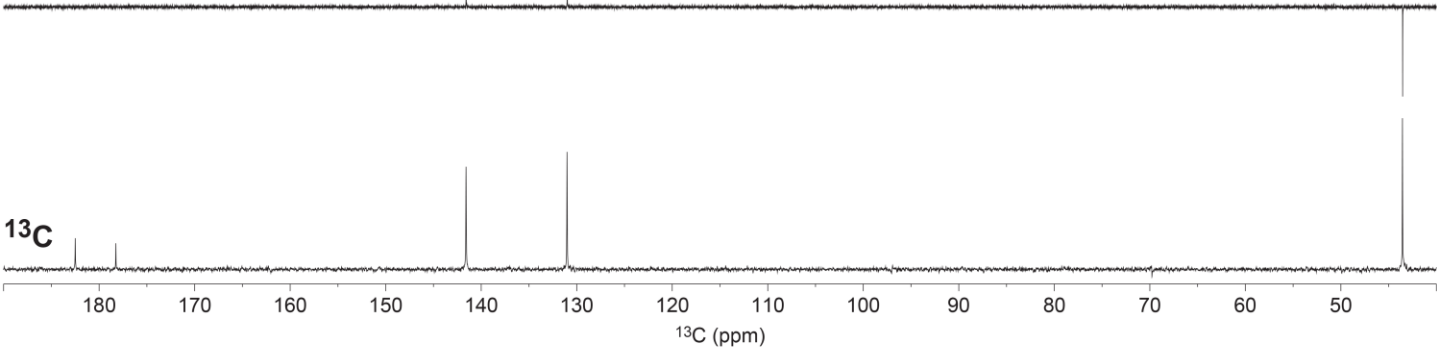
Difficoltà ★☆☆☆

Solvente: D_2O

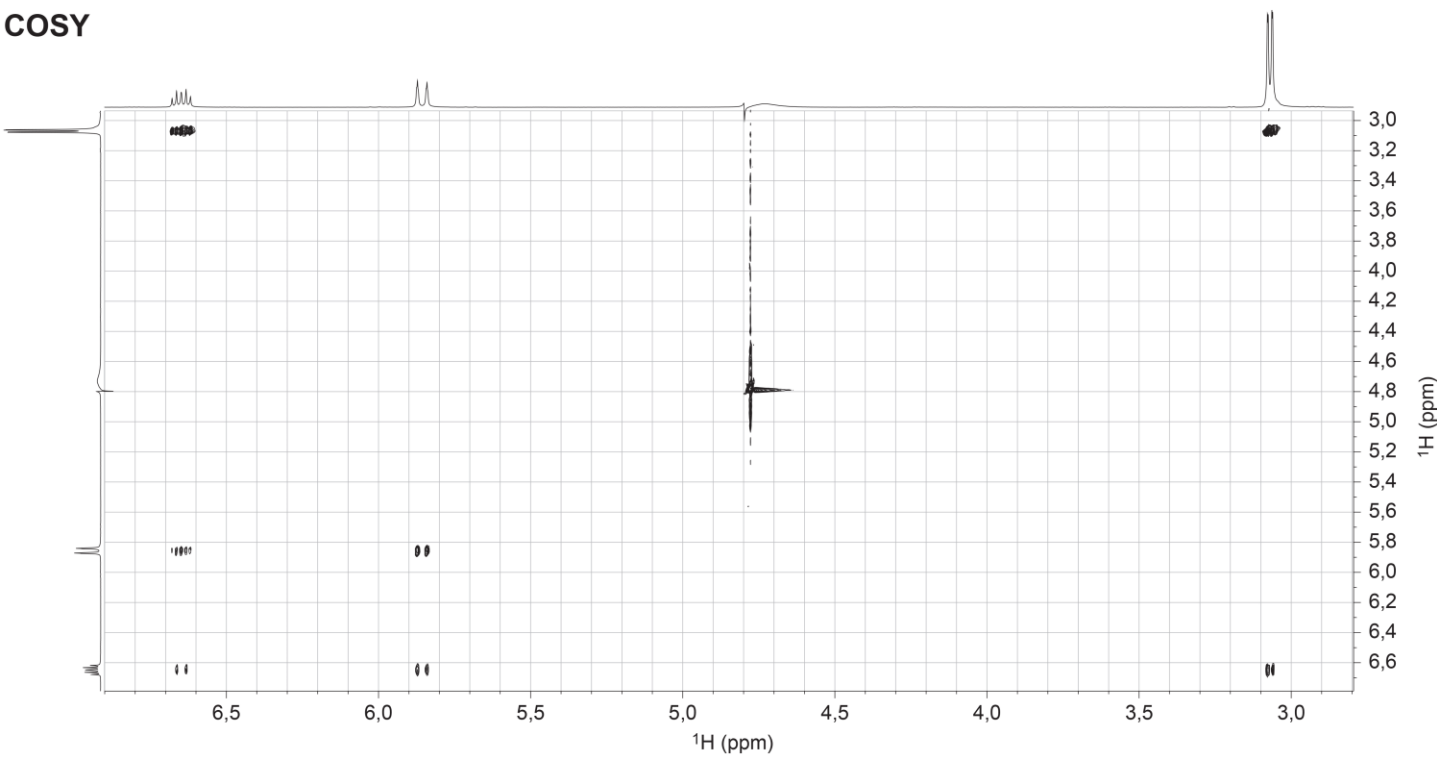
Campo: 500 MHz (1H); 125 MHz (^{13}C)



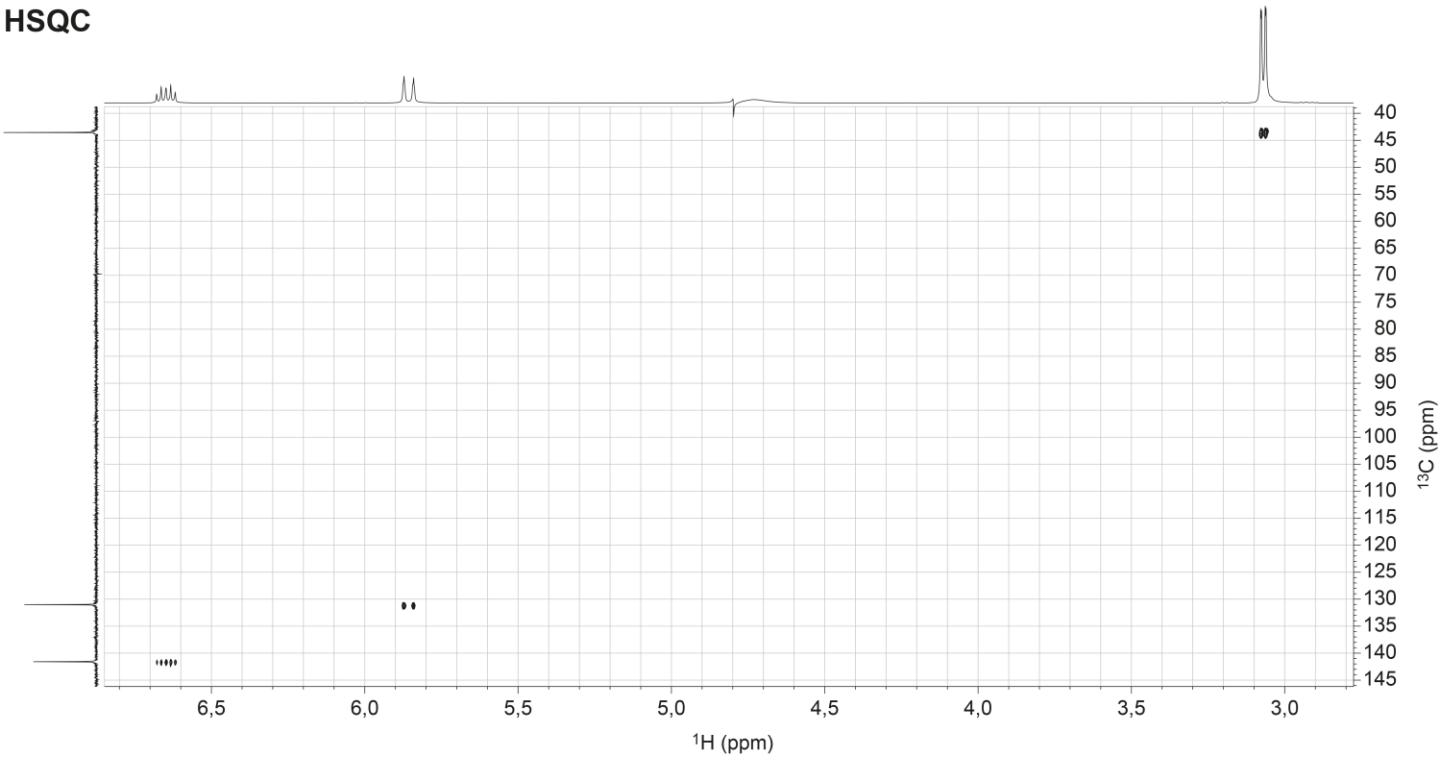
DEPT 135



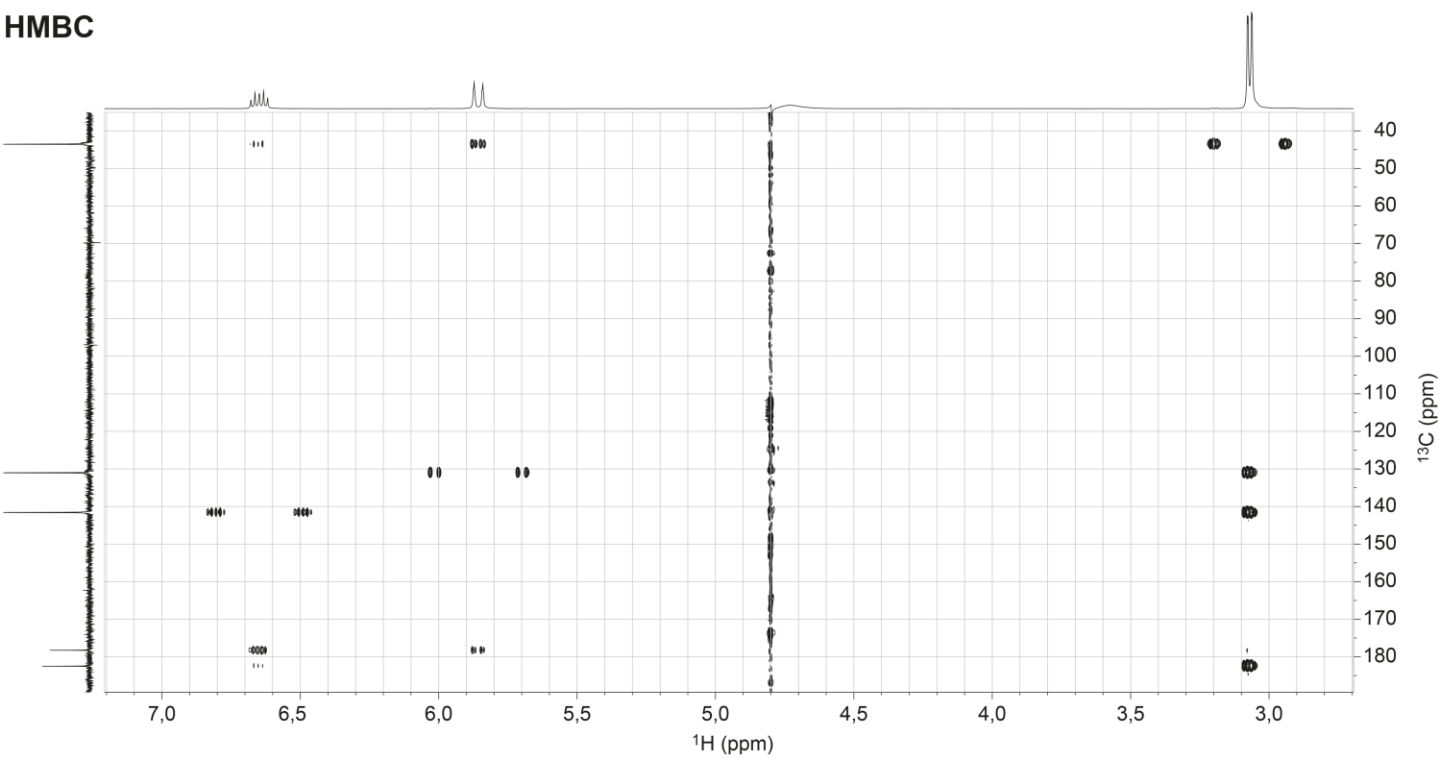
COSY

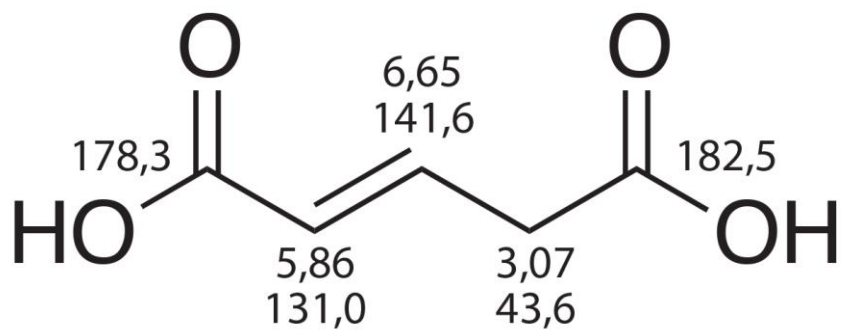


HSQC



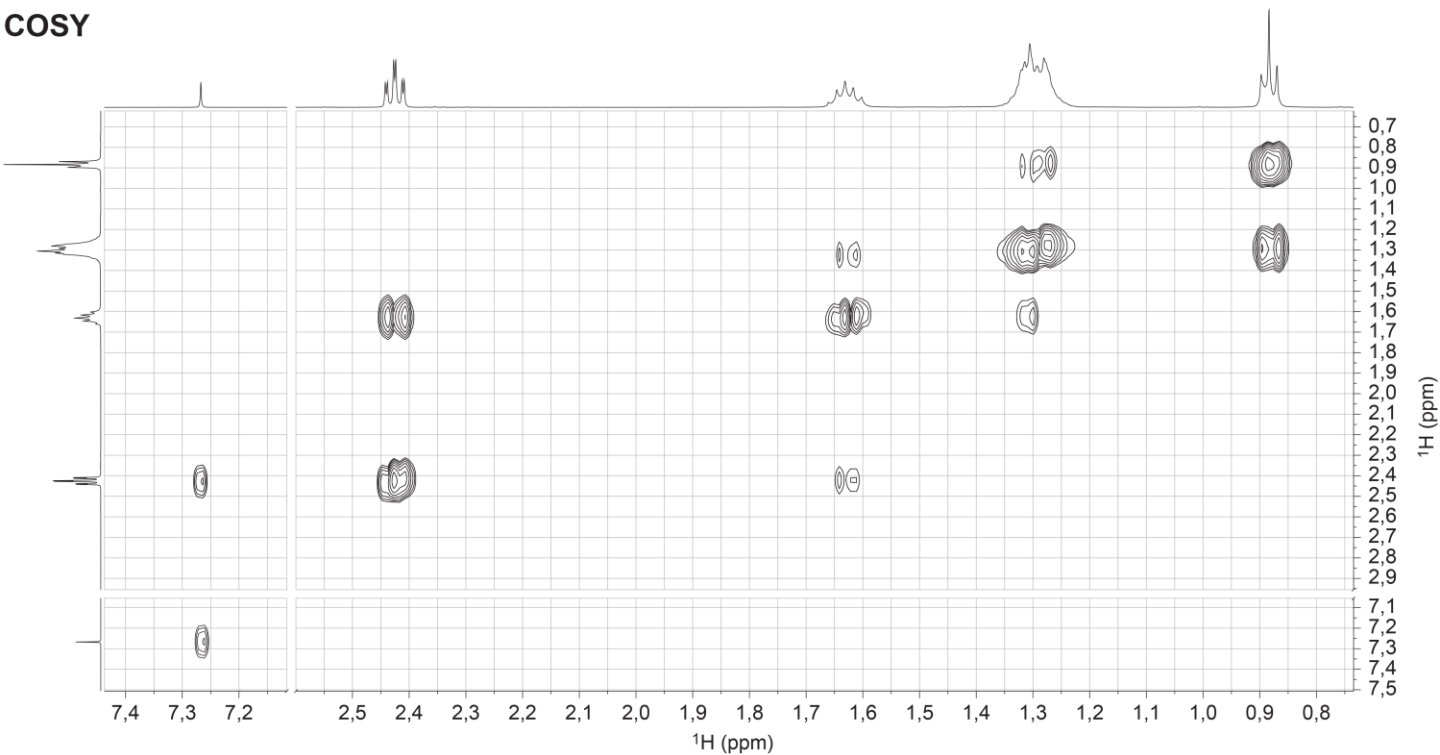
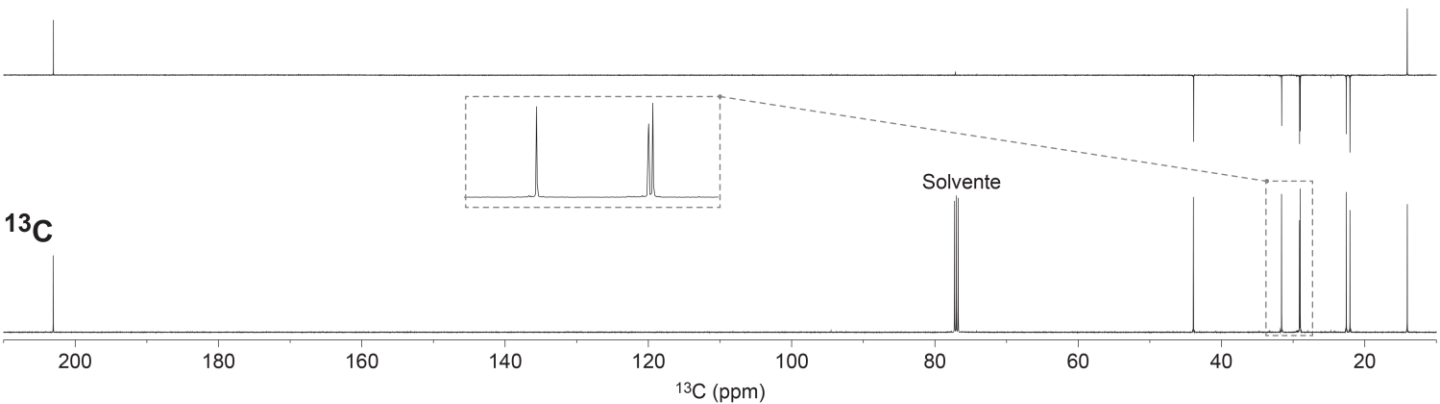
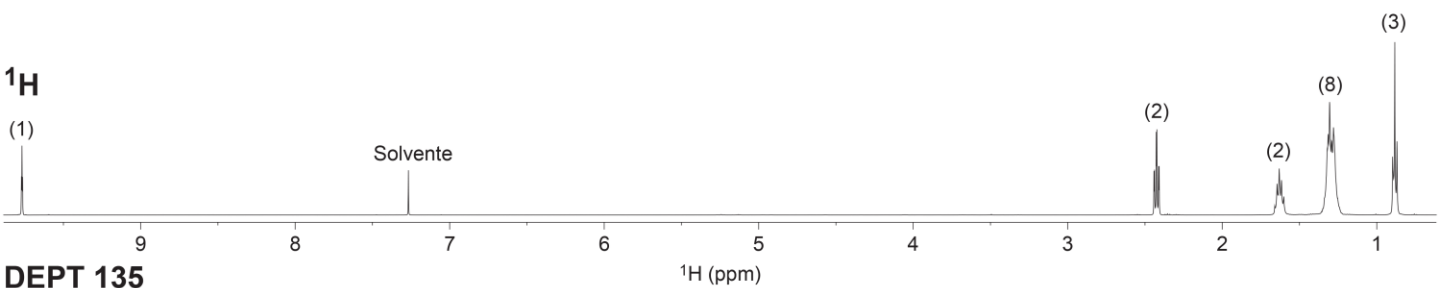
HMBC



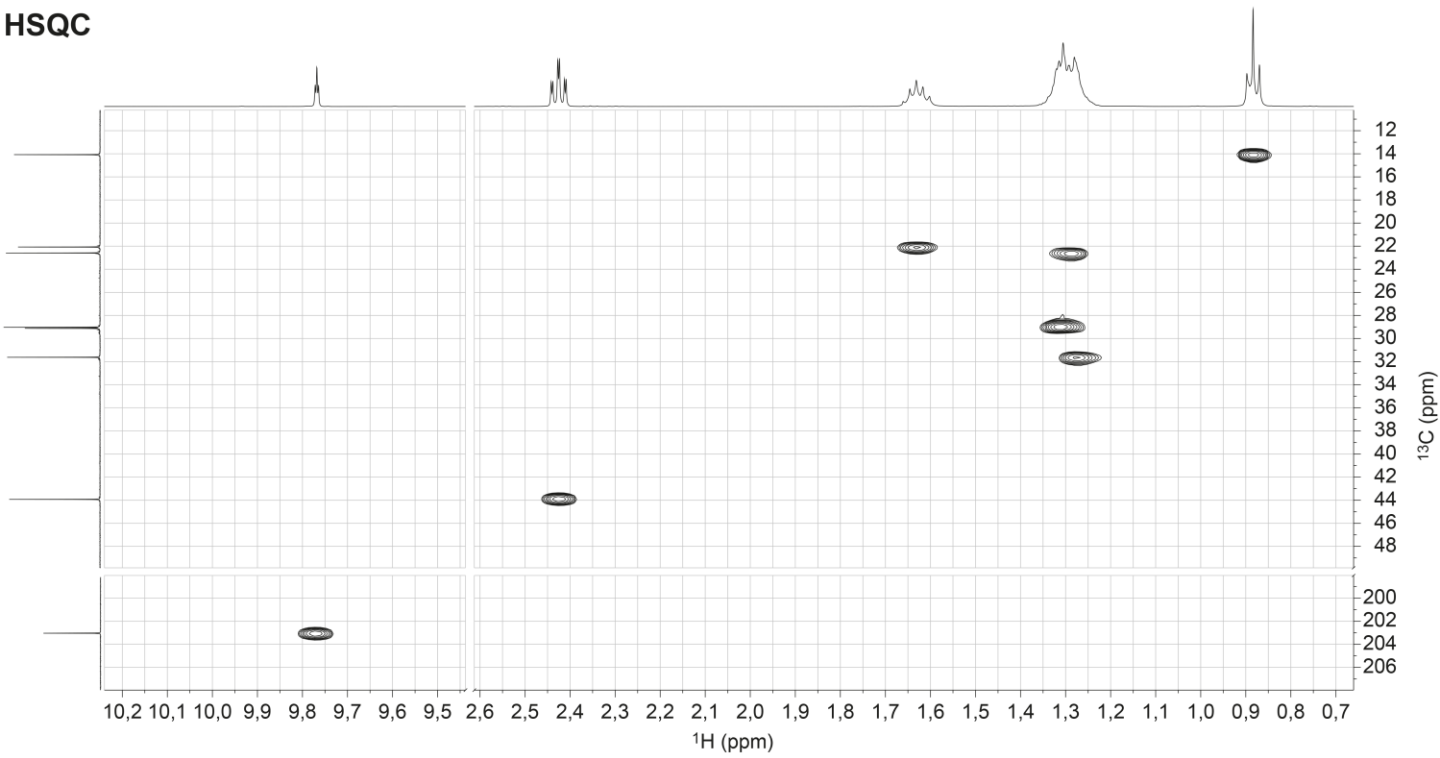


Esercizio 8.13Formula molecolare: $C_8H_{16}O$

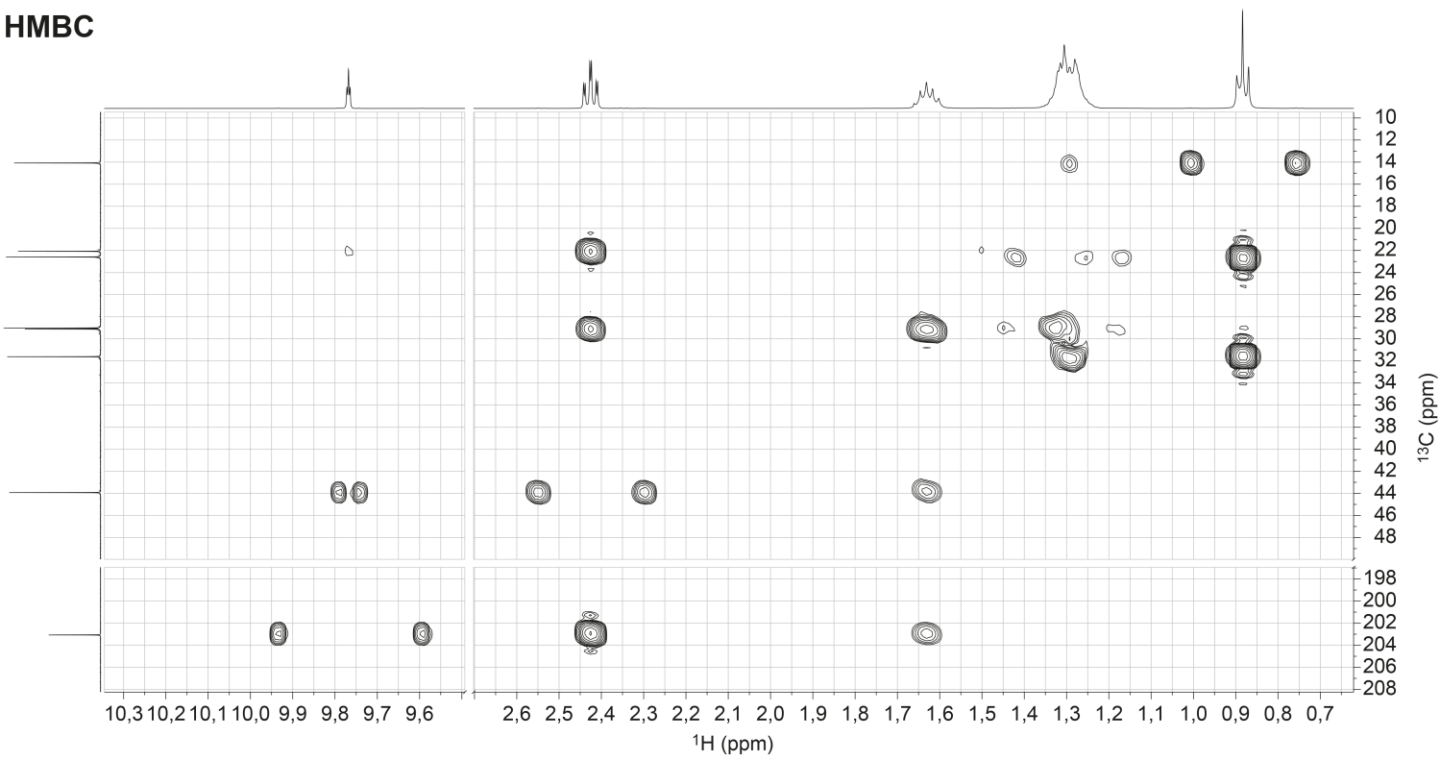
Difficoltà ★★★★★

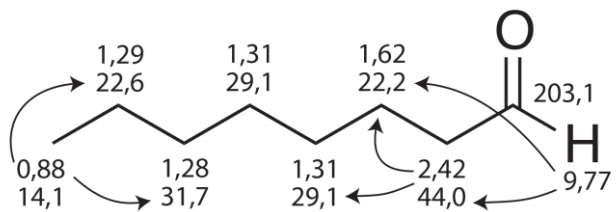
Solvente: $CDCl_3$ Campo: 500 MHz (1H); 125 MHz (^{13}C)

HSQC



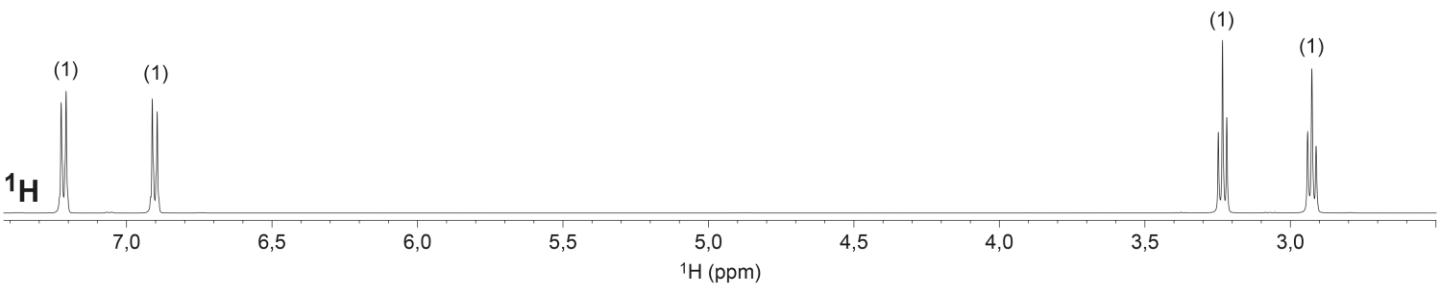
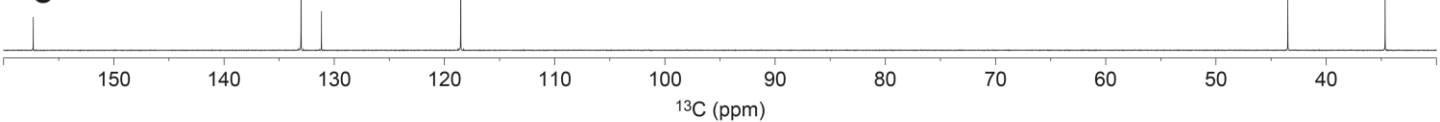
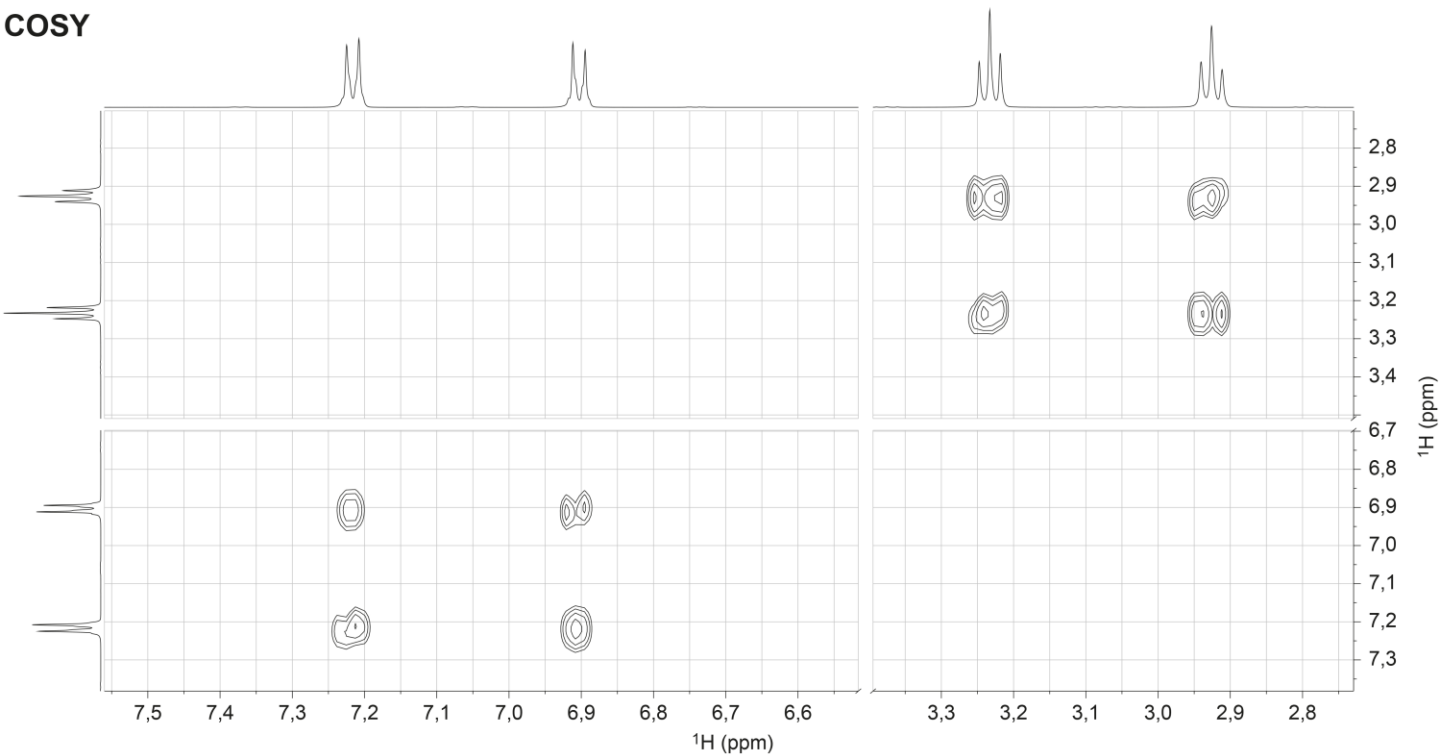
HMBC



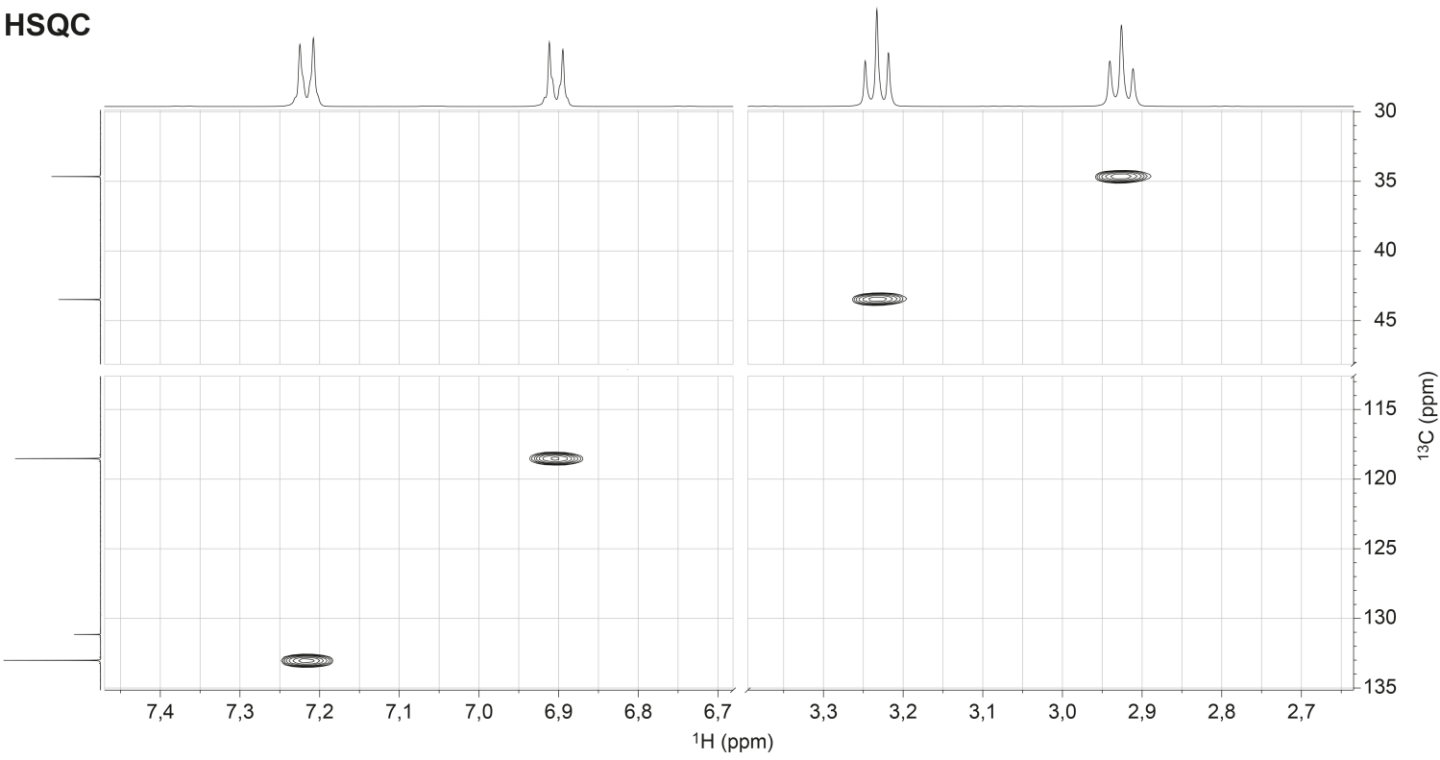


Esercizio 8.11Formula molecolare: $C_8H_{11}NO$

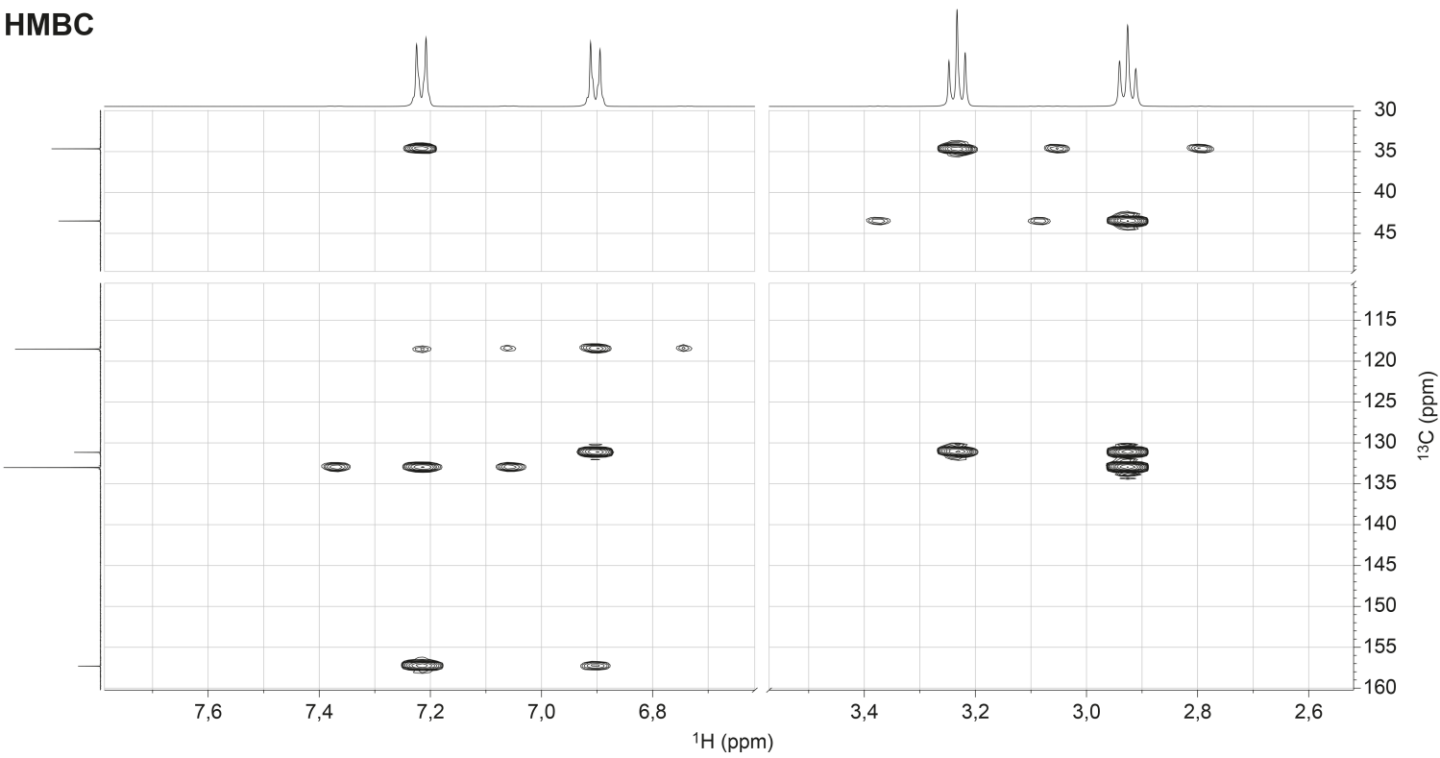
Difficoltà ★★☆☆☆

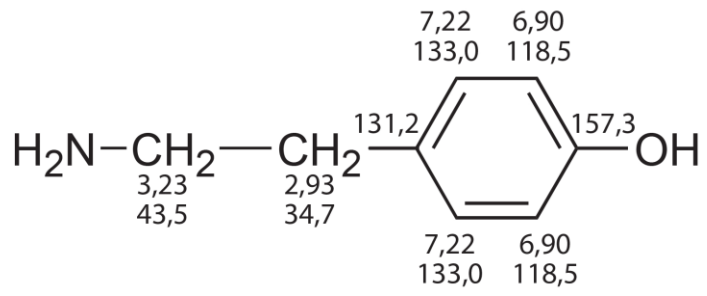
Solvente: D_2O Campo: 500 MHz (1H); 125 MHz (^{13}C)**DEPT 135** **^{13}C** **COSY**

HSQC



HMBC





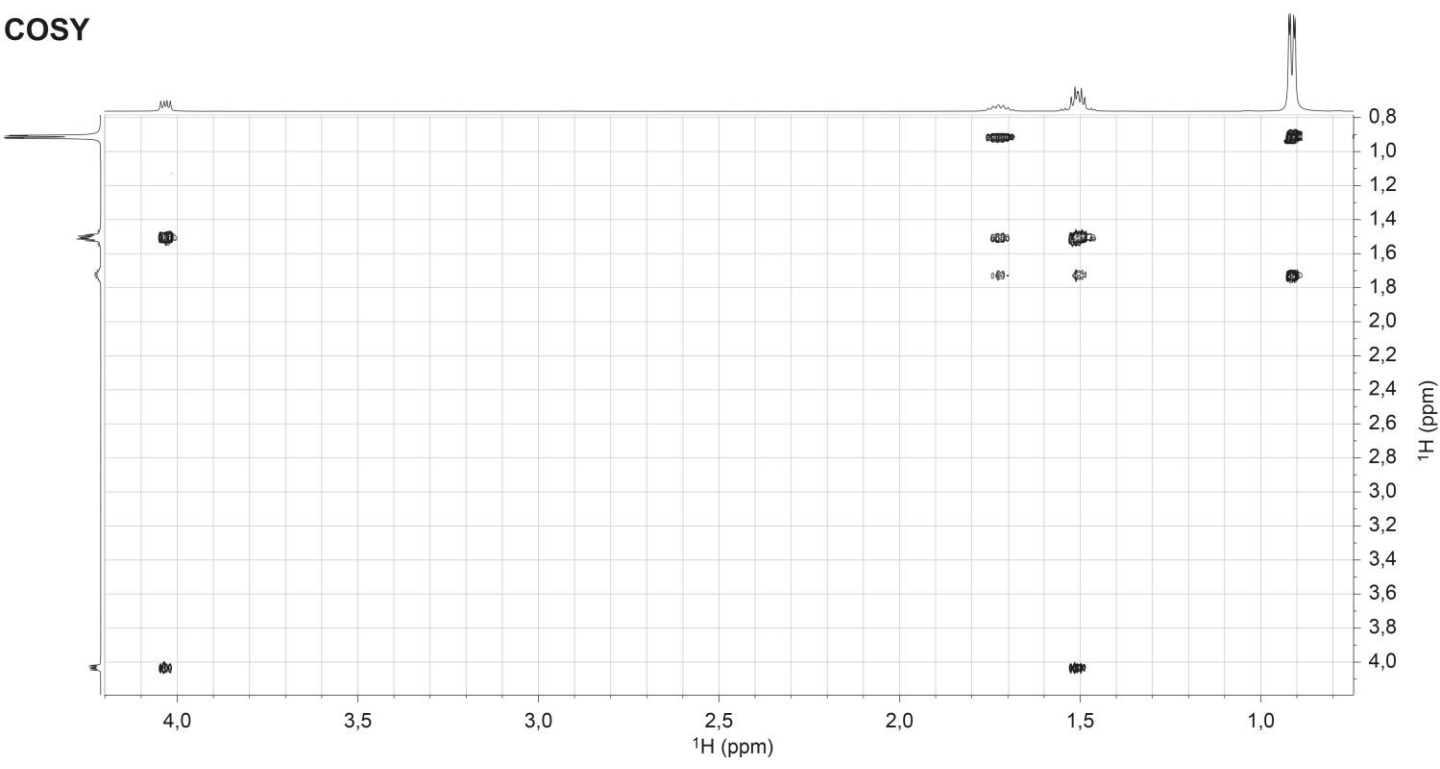
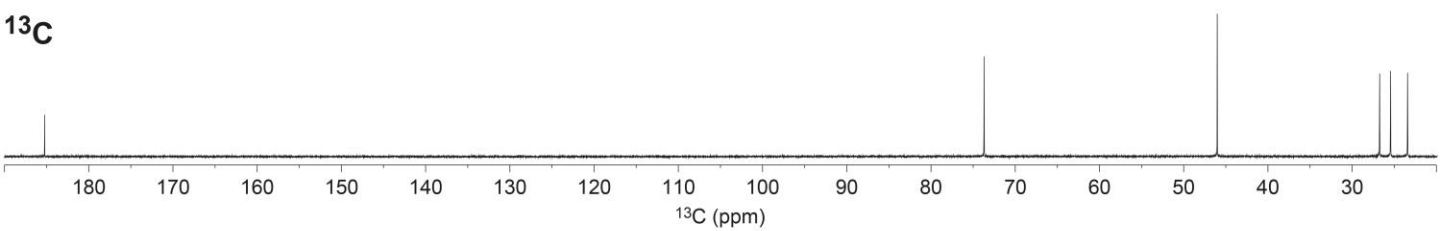
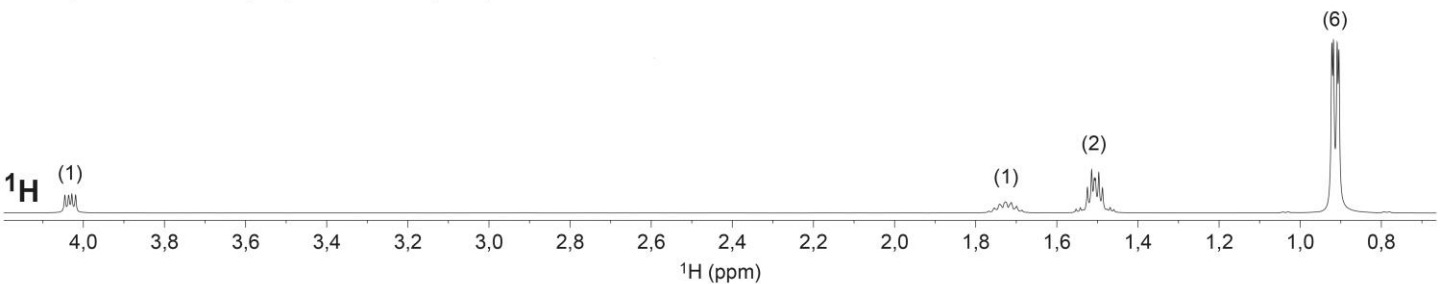
Esercizio 8.12

Formula molecolare: $C_6H_{12}O_3$

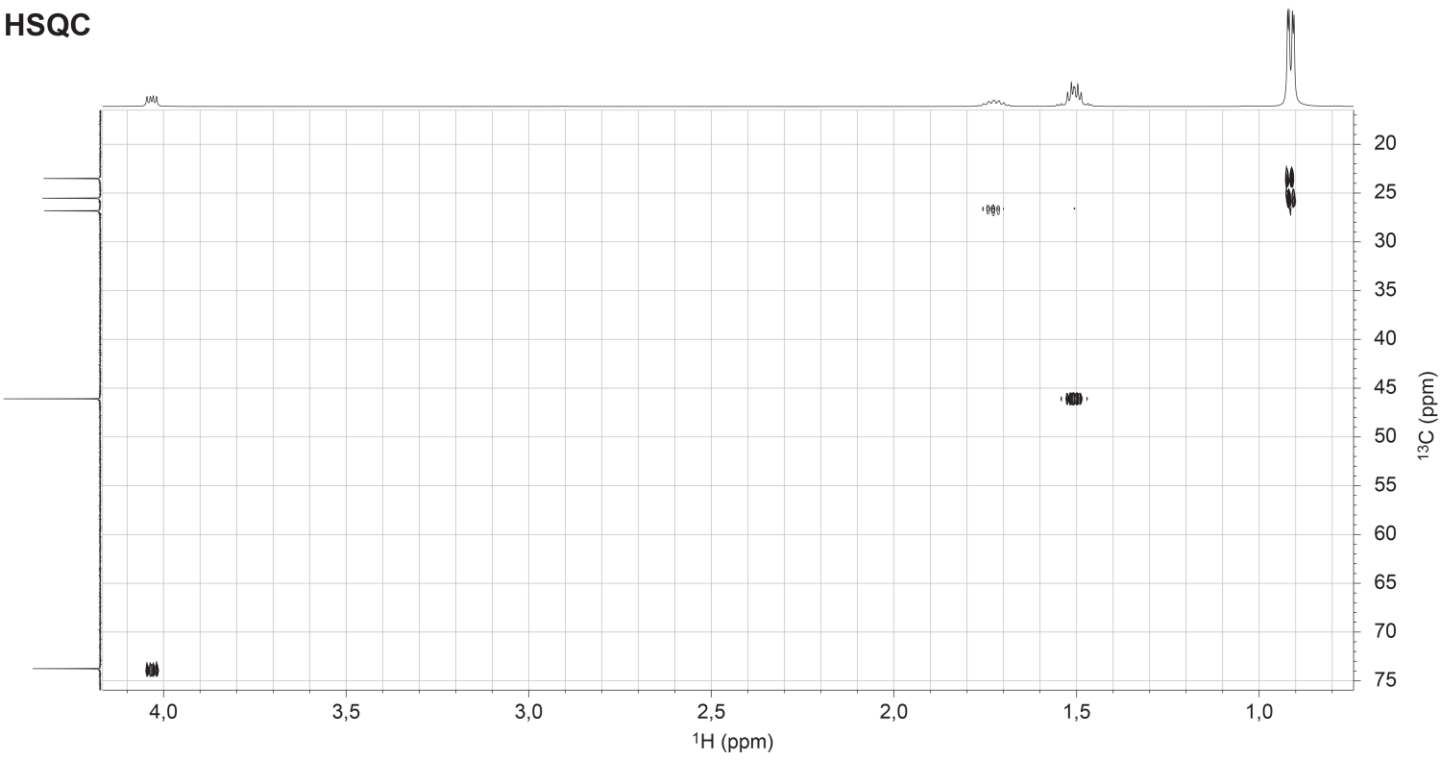
Difficoltà ★★☆☆☆

Solvente: D_2O

Campo: 500 MHz (1H); 125 MHz (^{13}C)



HSQC



HMBC

