

LAB. DI CARTOGRAFIA
ANNO ACCADEMICO 2022-2023

LETTURA DELLE CARTE TOPOGRAFICHE

Programma della lezione

- Come si legge una carta topografica?
- Elementi topografici per leggere le carte
- Preparazione alla lettura delle carte topografiche
- Esempi di forme strutturali, costiere, eoliche, glaciali, carsiche, fluviali, ecc.

Come si legge una carta topografica? Elementi da considerare (da Castiglioni et al., 2005)

- **Estensione della carta:** larghezza per altezza
- **Intervallo altimetrico:** quote max e min, dislivello
- **Inquadramento geografico:** Caratteristiche geografiche generali
- **Pendenze:** % nelle varie zone
- **Lettura analitica del terreno:** scarpate, pendii, pianure, ecc
- **Superfici di roccia affiorante:** Presenza di rocce affioranti
- **Idrografia:** elementi idrografici, fiumi, laghi, mare, corsi d'acqua, ecc
- **Vegetazione:** tipi di vegetazione
- **Elementi antropici:** strade, edifici, moli, funivie, industrie, ecc
- **Uso del suolo:** coltivazioni, cave, ecc
- **Tipi di forme e stili geomorfologici:** forme riconoscibili
- **Considerazioni sul paesaggio:** tipo di paesaggio in generale

Elementi topografici e
stili geomorfologici

IGM 1:50.000 - 1:25.000

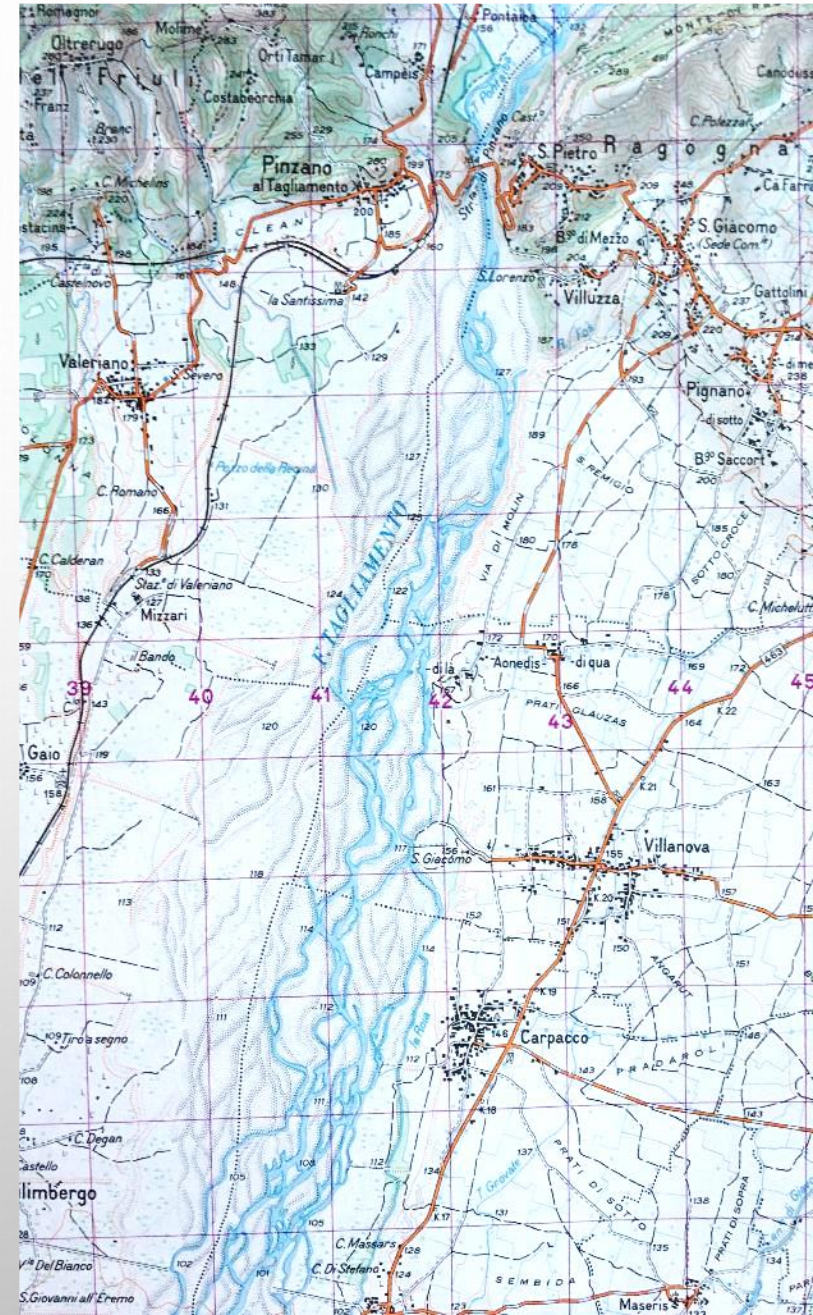
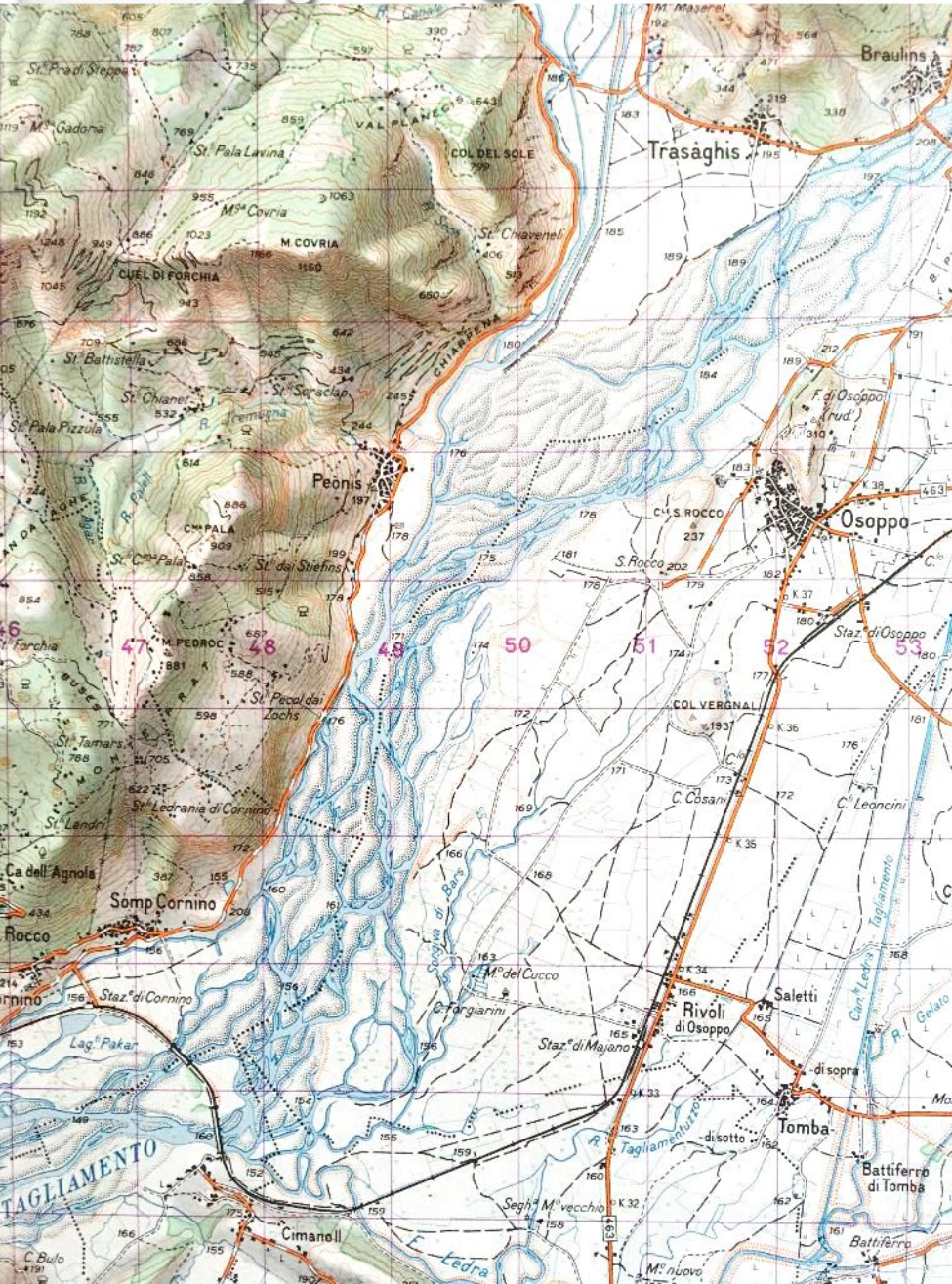


Valle impostata su una faglia (Linea della Gail)

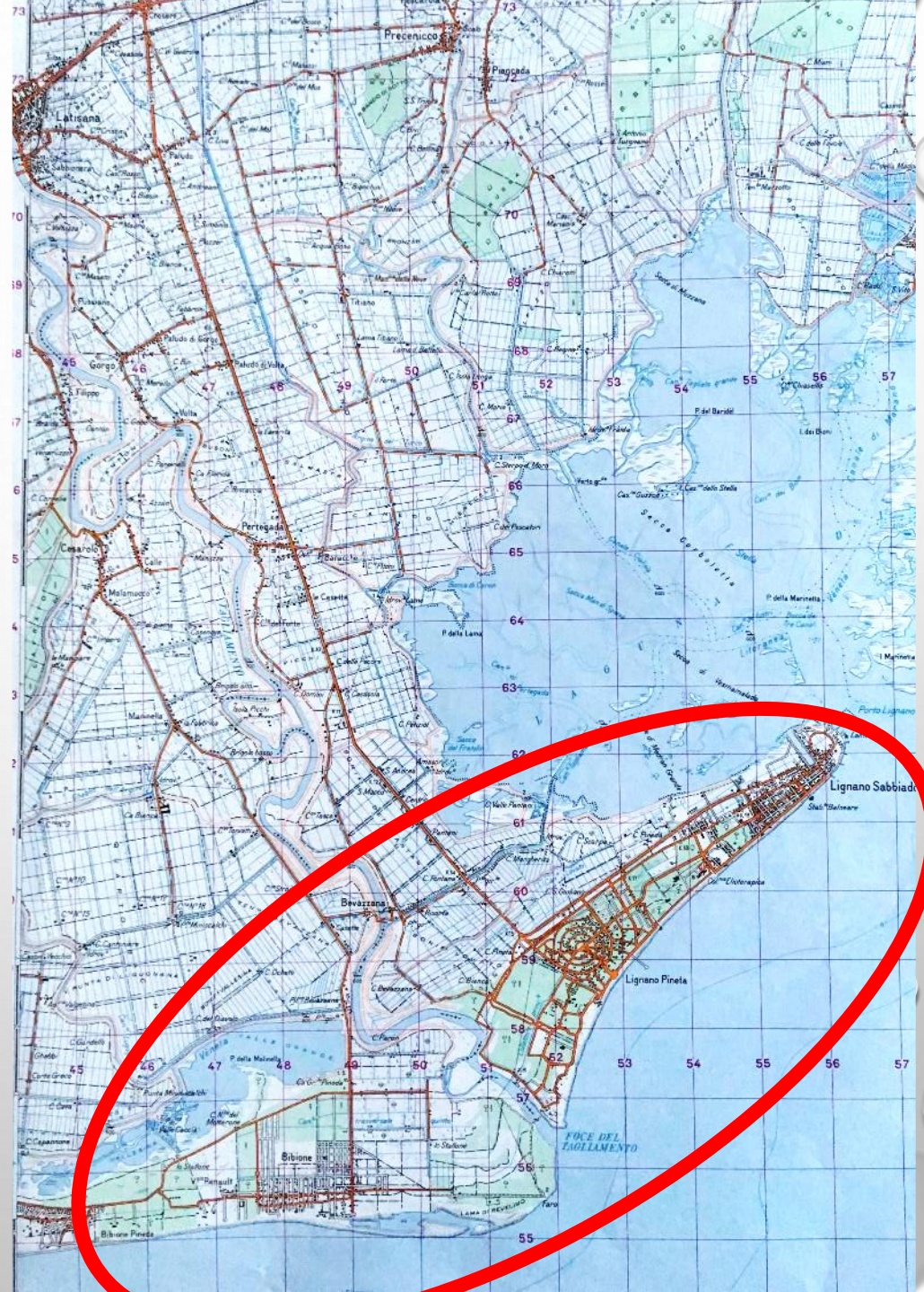


**Morena frontale
(Anfiteatro Morenico del Tagliamento)**

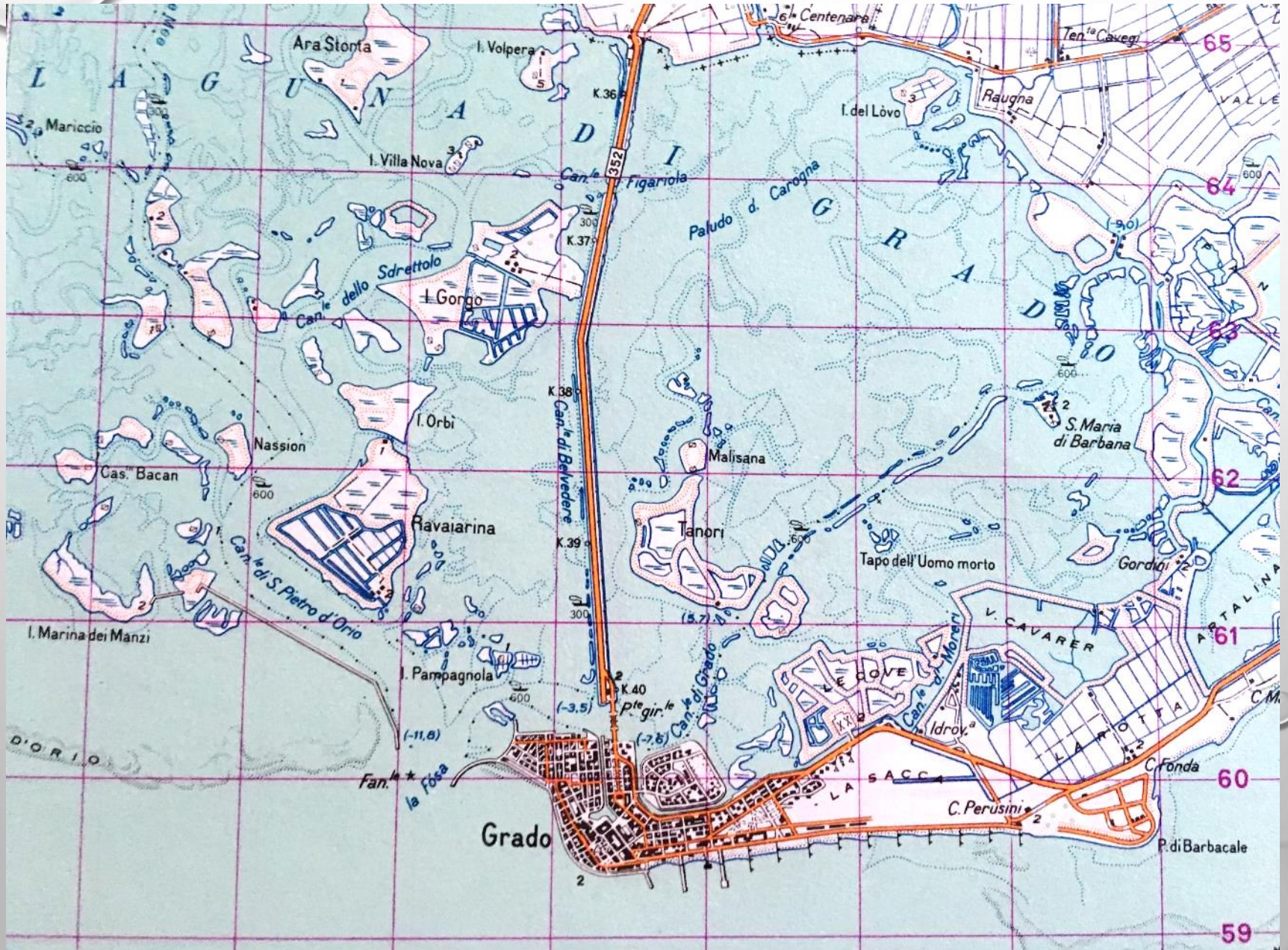
Fiume a canali intrecciati (braided): Tagliamento



Delta fluviale (Tagliamento a Lignano Sabbia)



Laguna (Grado)

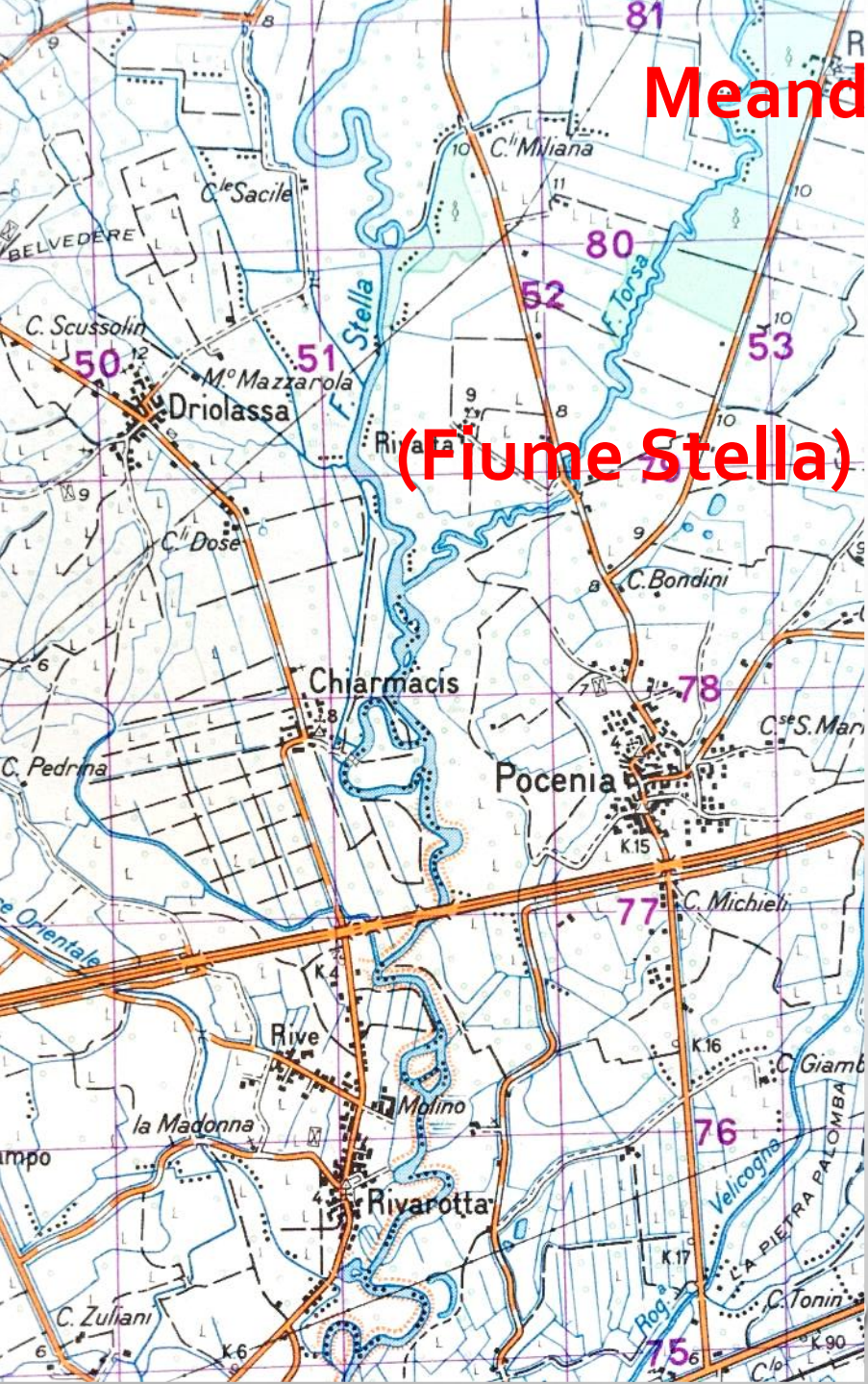


Altipiano carsico (Carso Isontino)

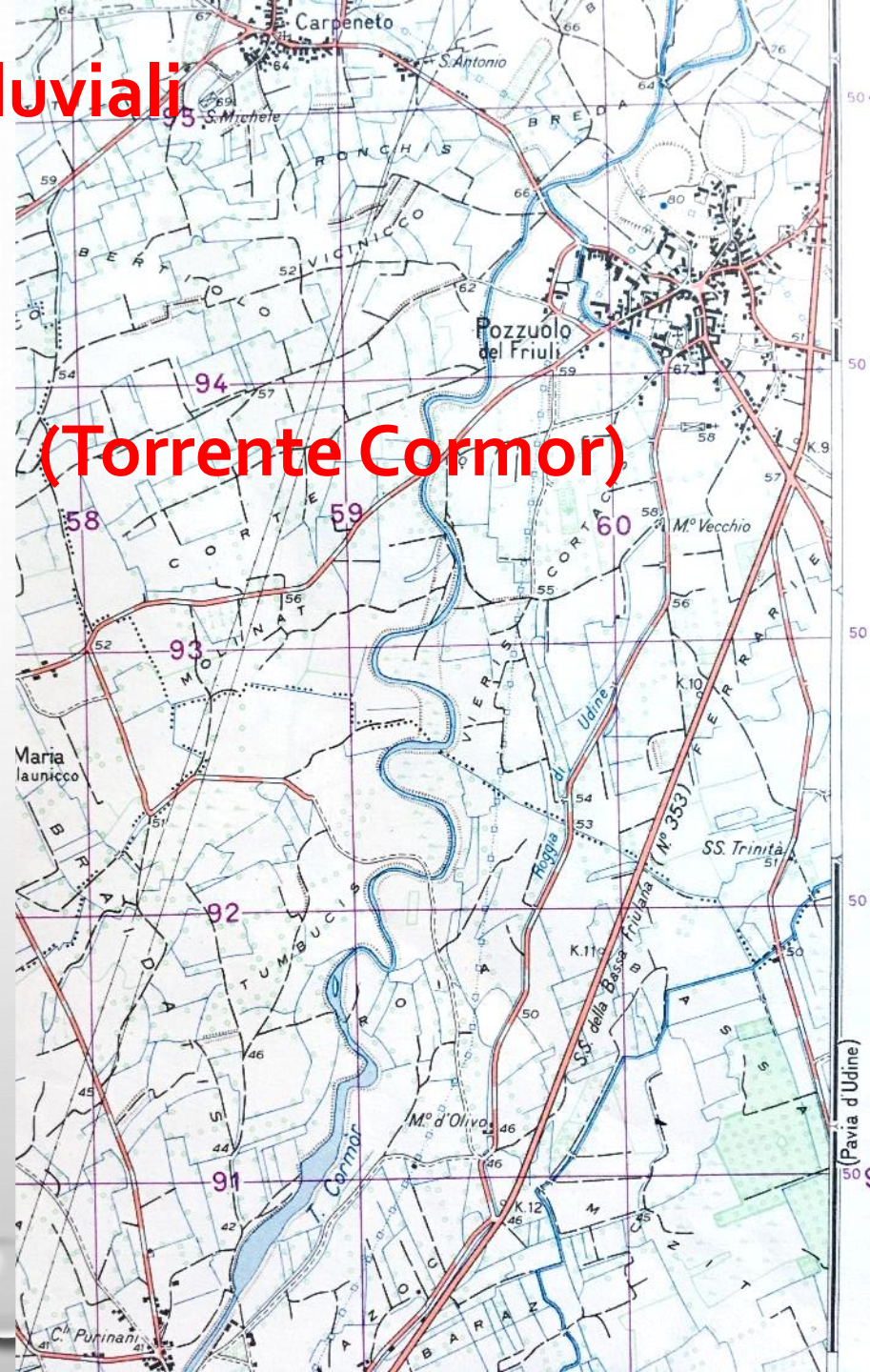


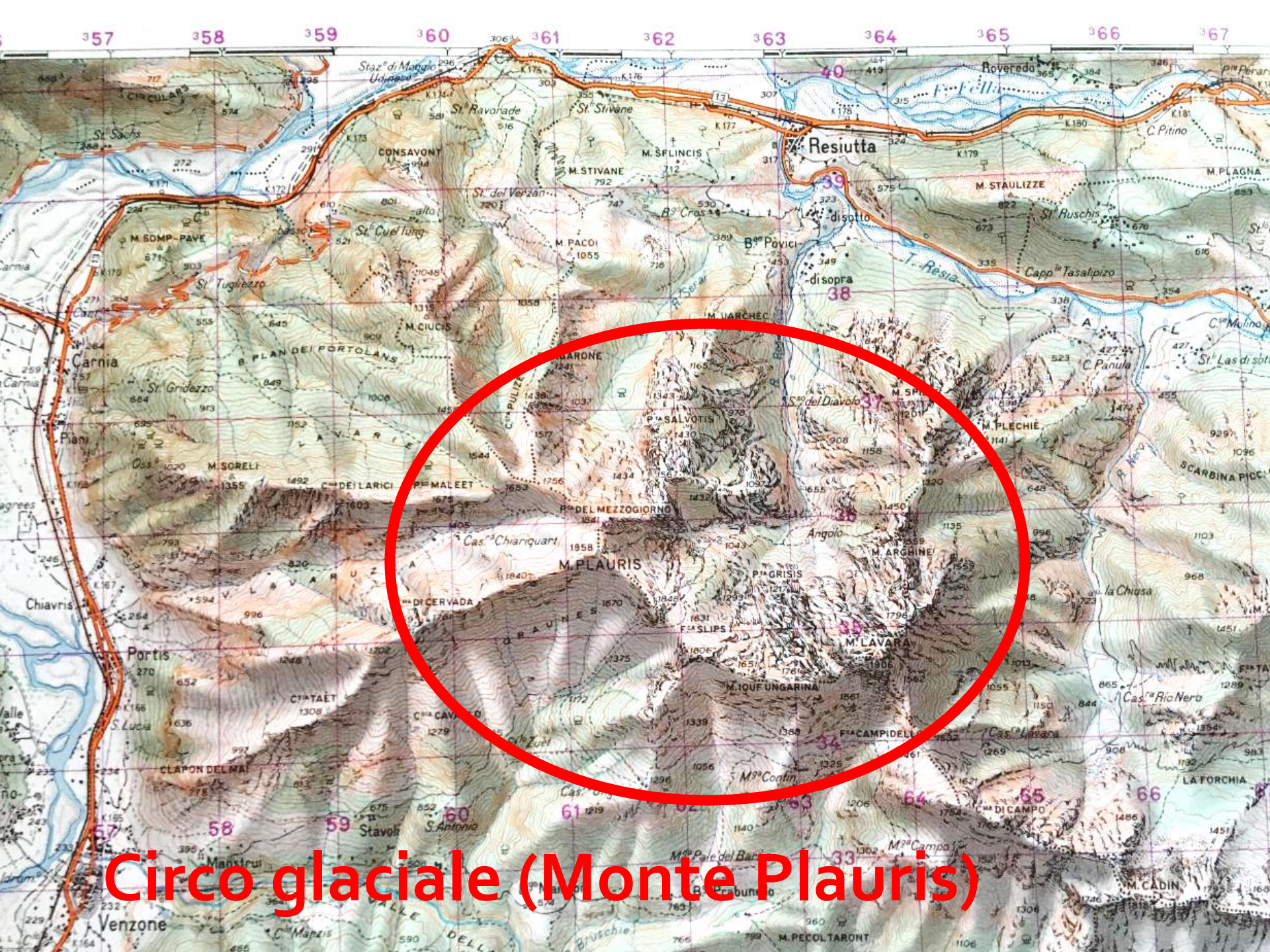
Meandri fluviali

(Fiume Stella)



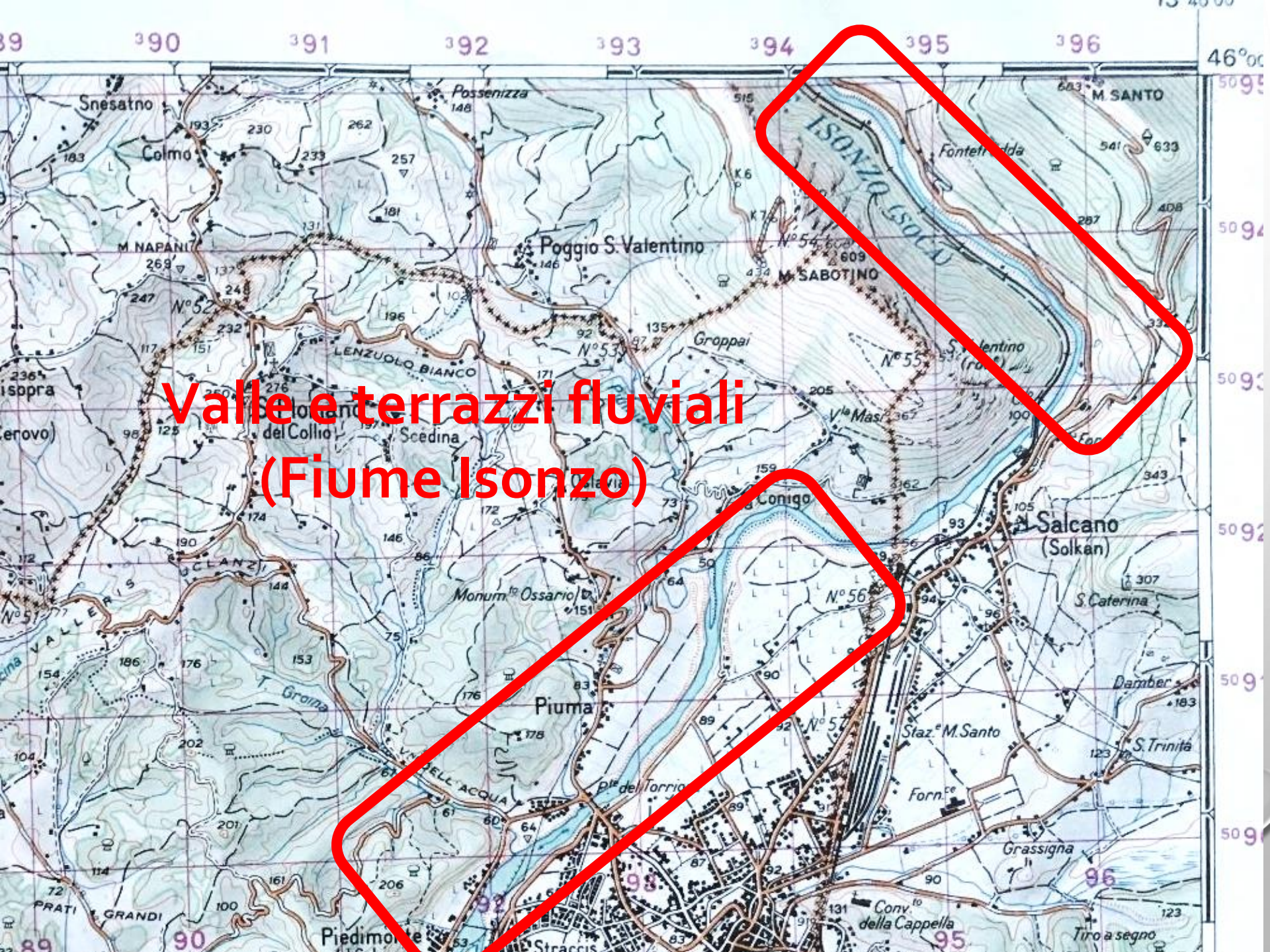
(Torrente Cormor)



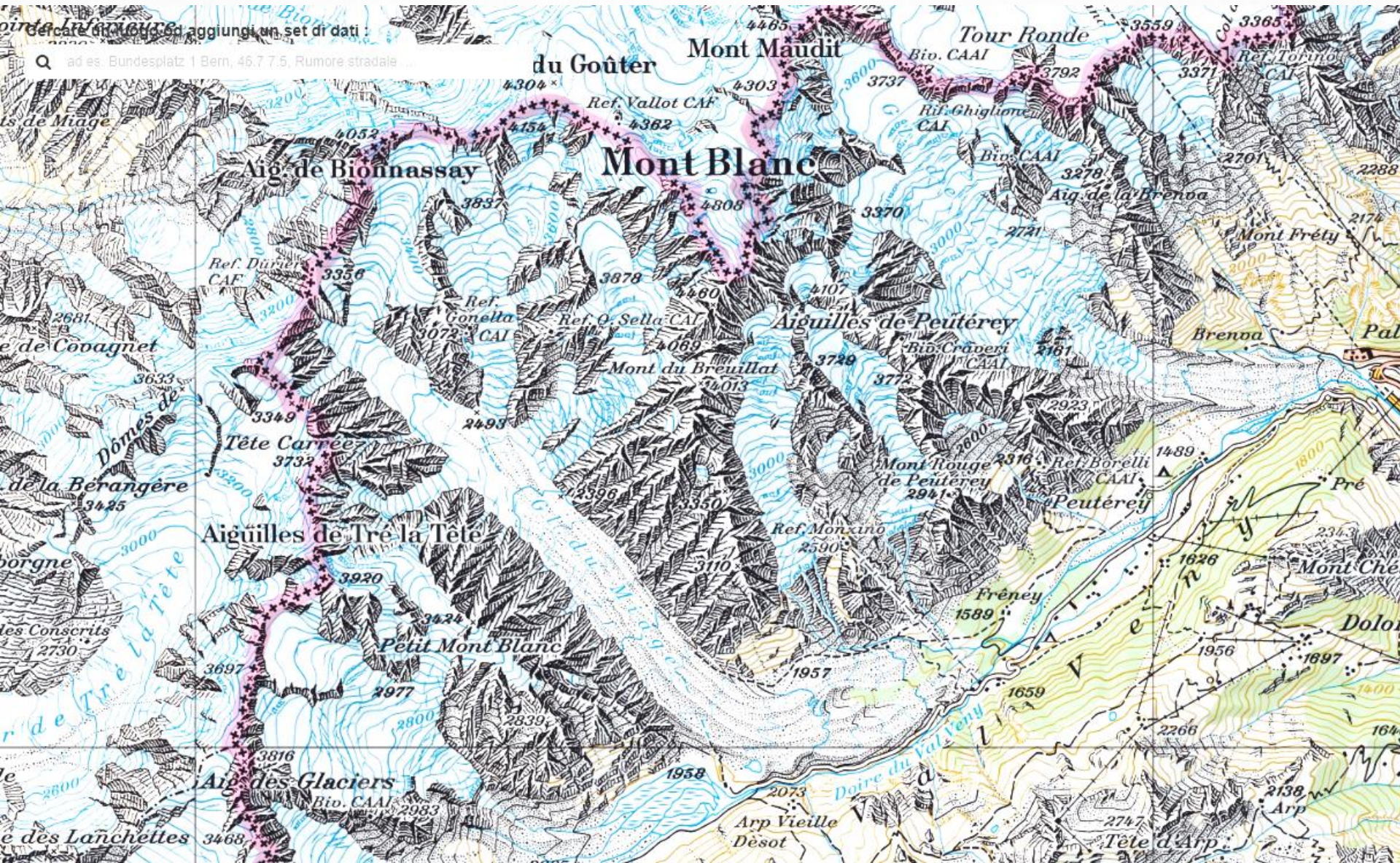


Circo glaciale (Monte Plauris)

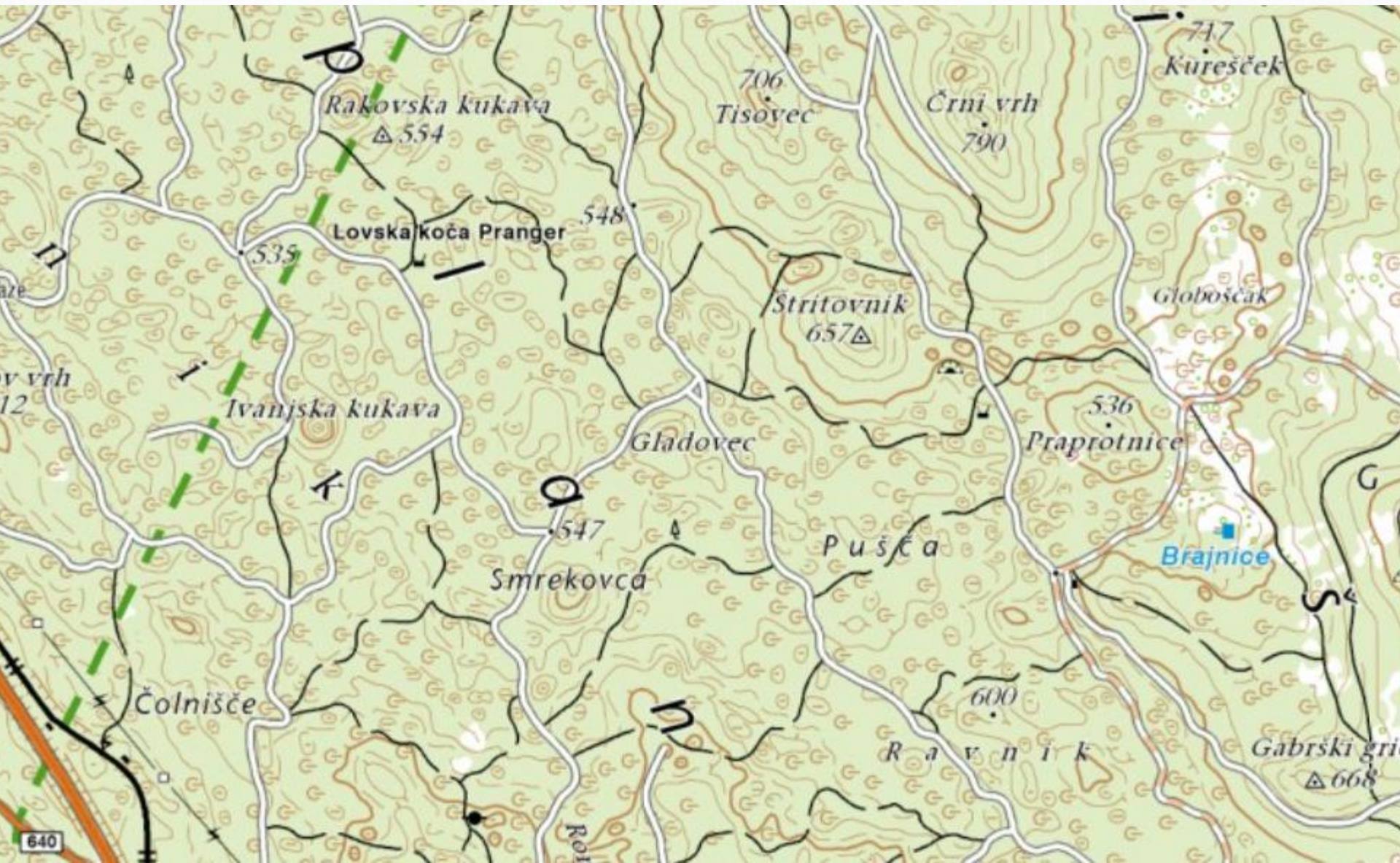
Valle e terrazzi fluviali (Fiume Isonzo)



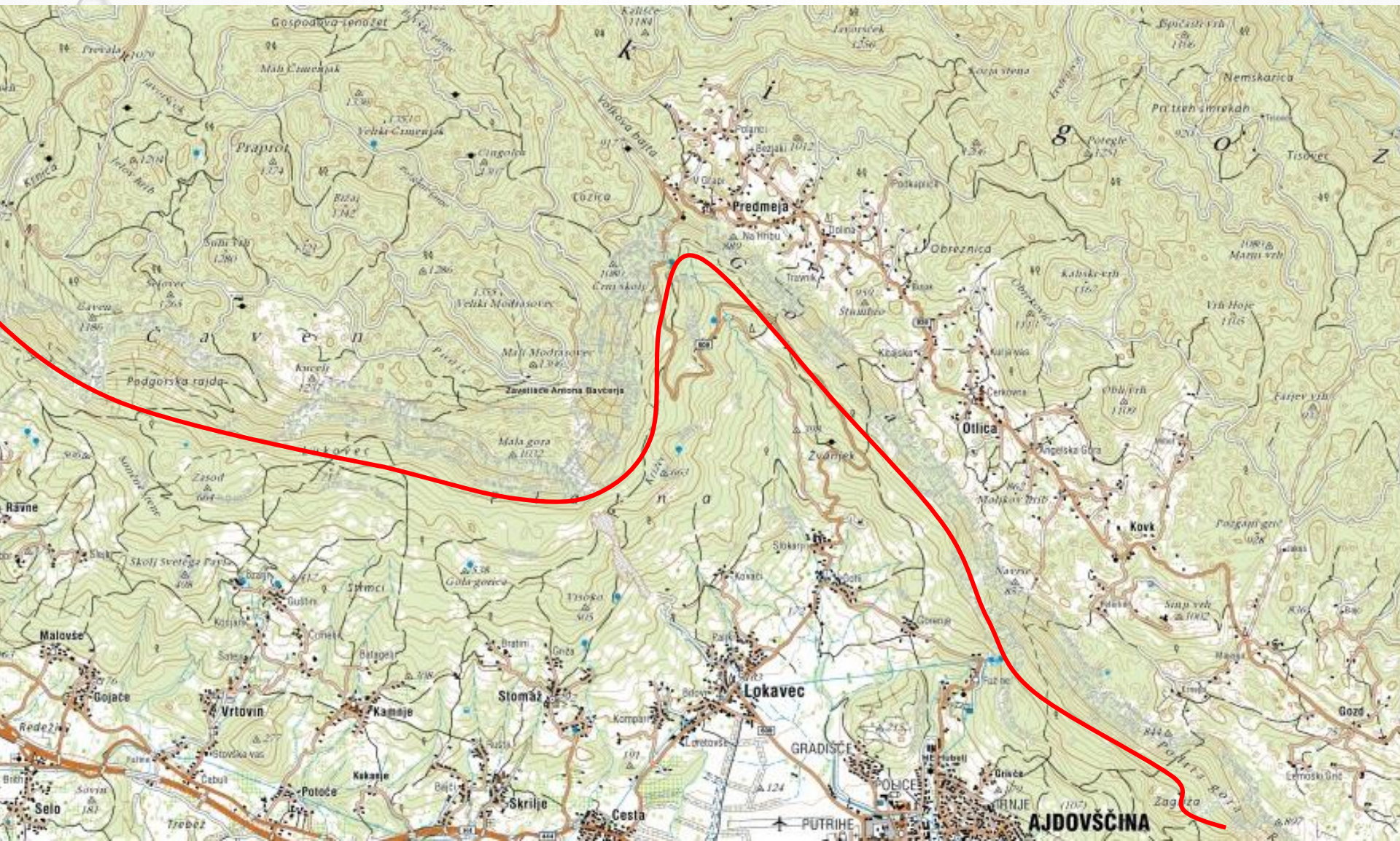
Ghiacciaio del Monte Bianco



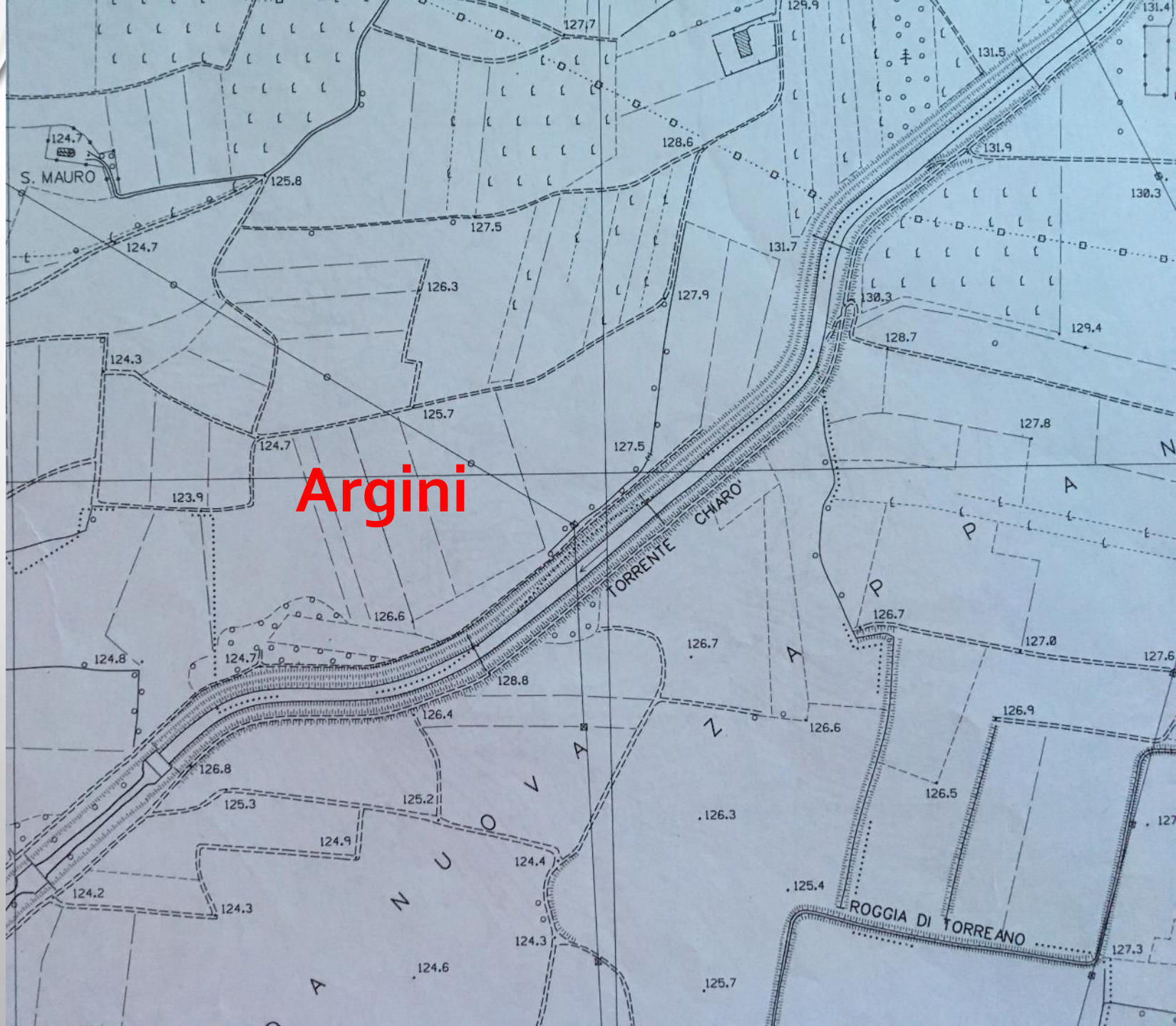
Altipiano carsico con doline



Condizionamento strutturale (Trnovski Godz – Selva di Ternova)



CTR 1:5.000 - 1:10.000



A topographic map of the Gemona del Friuli area in Italy. The map features contour lines indicating elevation, with labels such as 300, 350, 400, 450, 500, 550, and 600. Several towns are labeled: GLESEUTE, BALDOS, SAVALONS, SCUGELARS, BORCUT, GEMONA DEL FRIULI, and BAMBINS. A prominent feature is a large, fan-shaped area of lower elevation (around 300-400 meters) extending from the town of Gemona del Friuli towards the southeast, which is identified as an alluvial cone. A red rounded rectangle highlights this area. The map also shows roads, buildings, and a river labeled 'Sorrente Vecchio'.

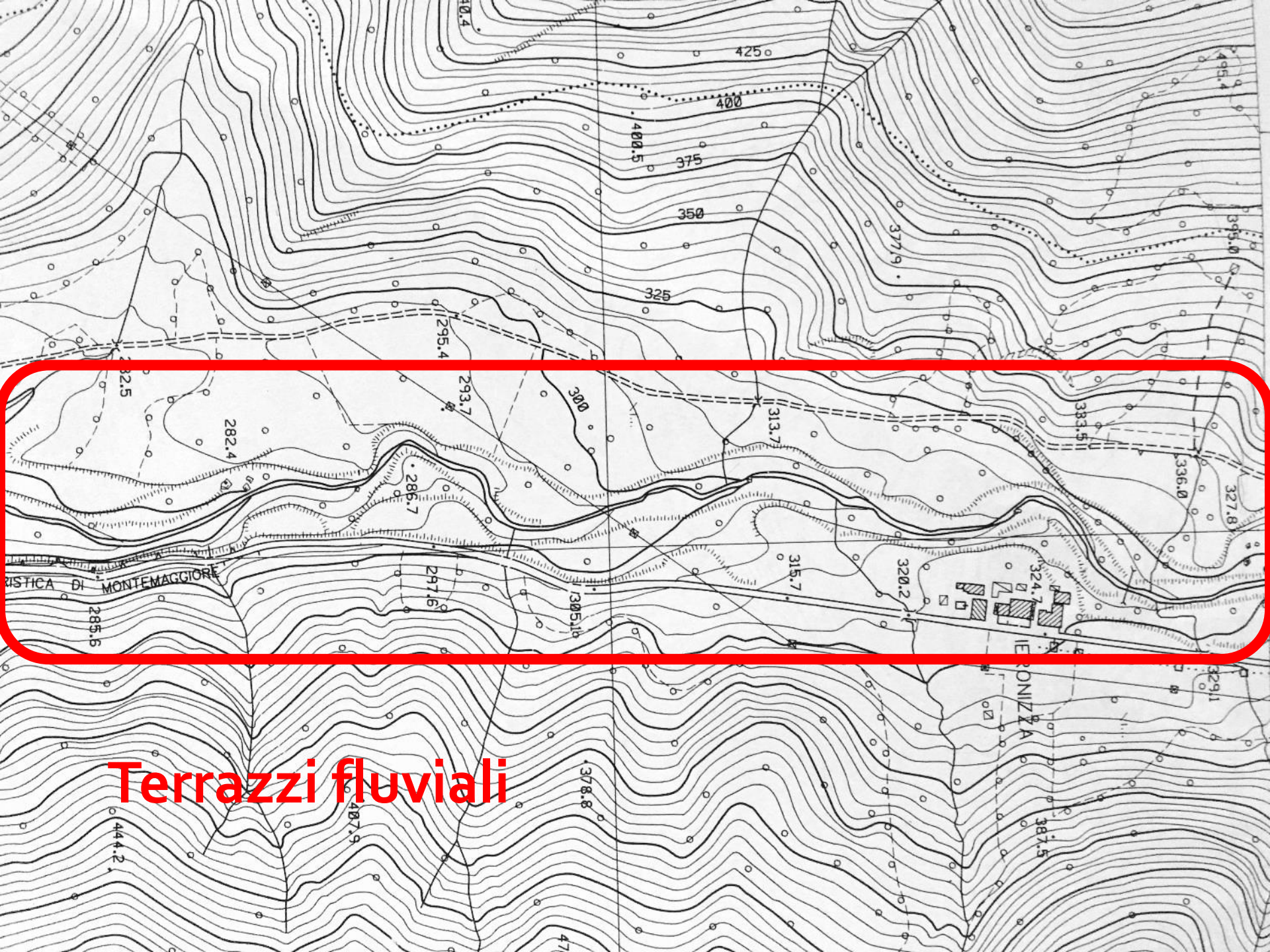
**Conoide alluvionale
(Gemona del Friuli)**

**Terrazzamenti
Artificiali
(pastini)**

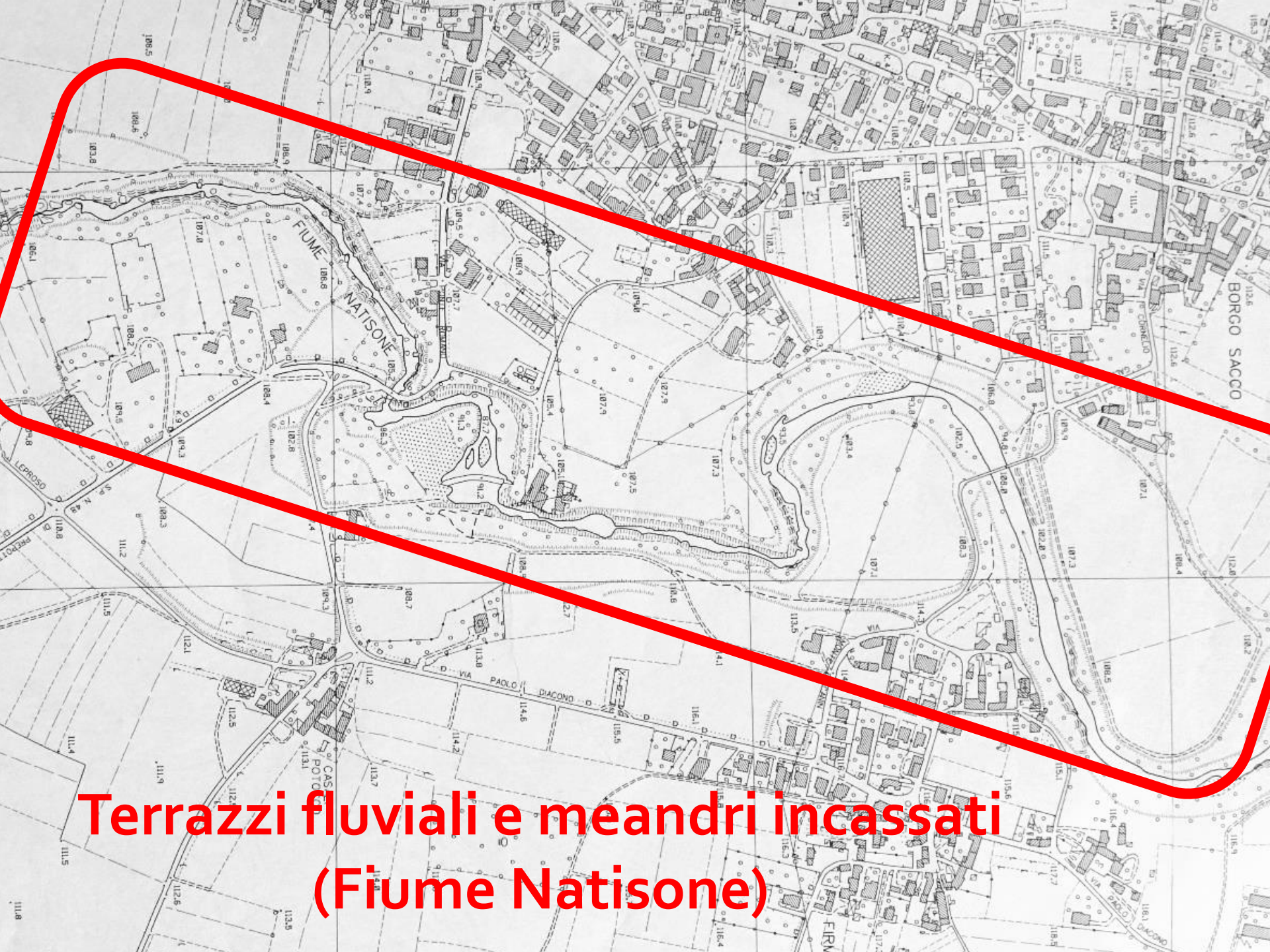




**Lingua glaciale
(Sella Prevala)**



Terrazzi fluviali

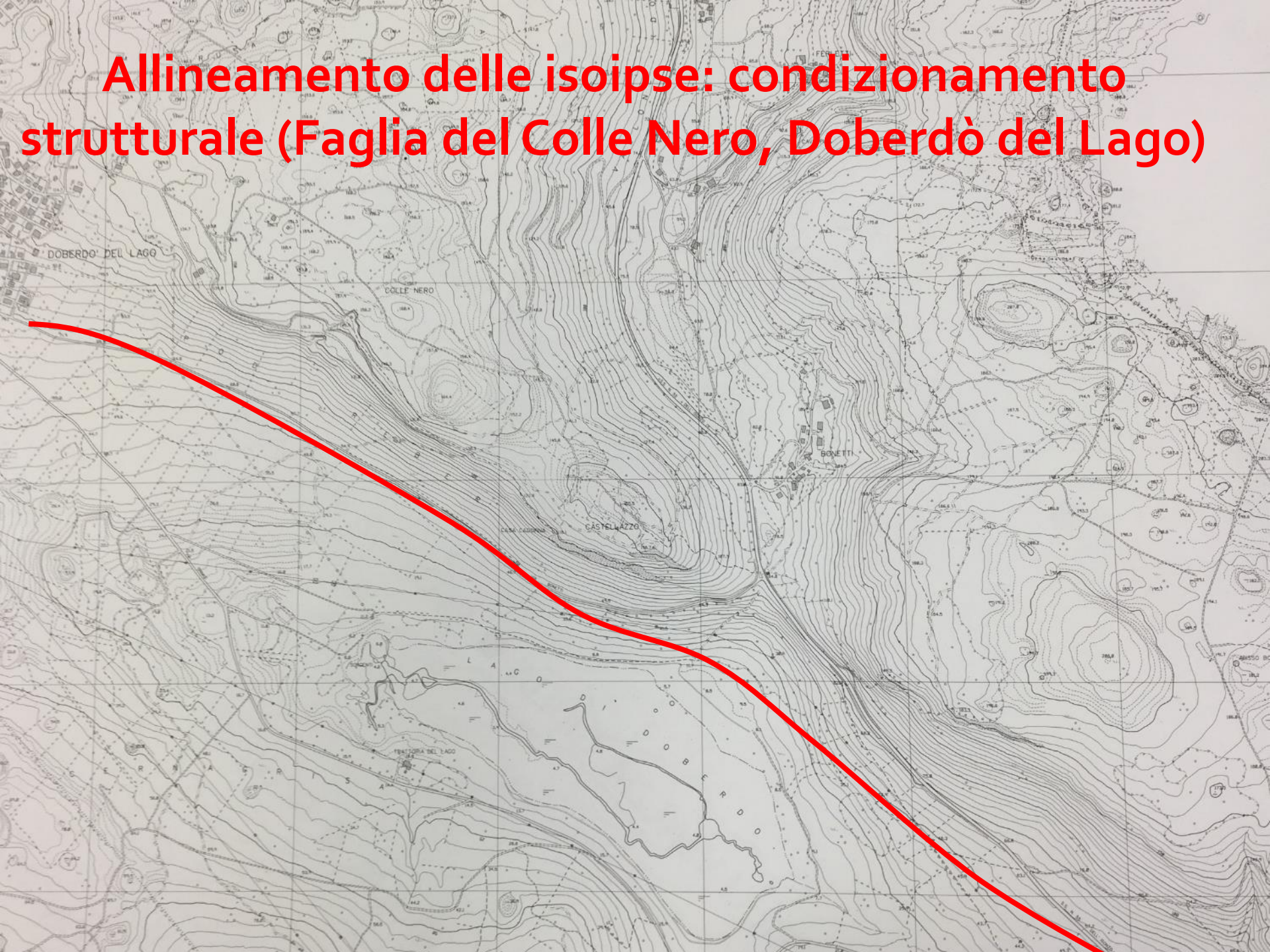


**Terrazzi fluviali e meandri incassati
(Fiume Natisone)**

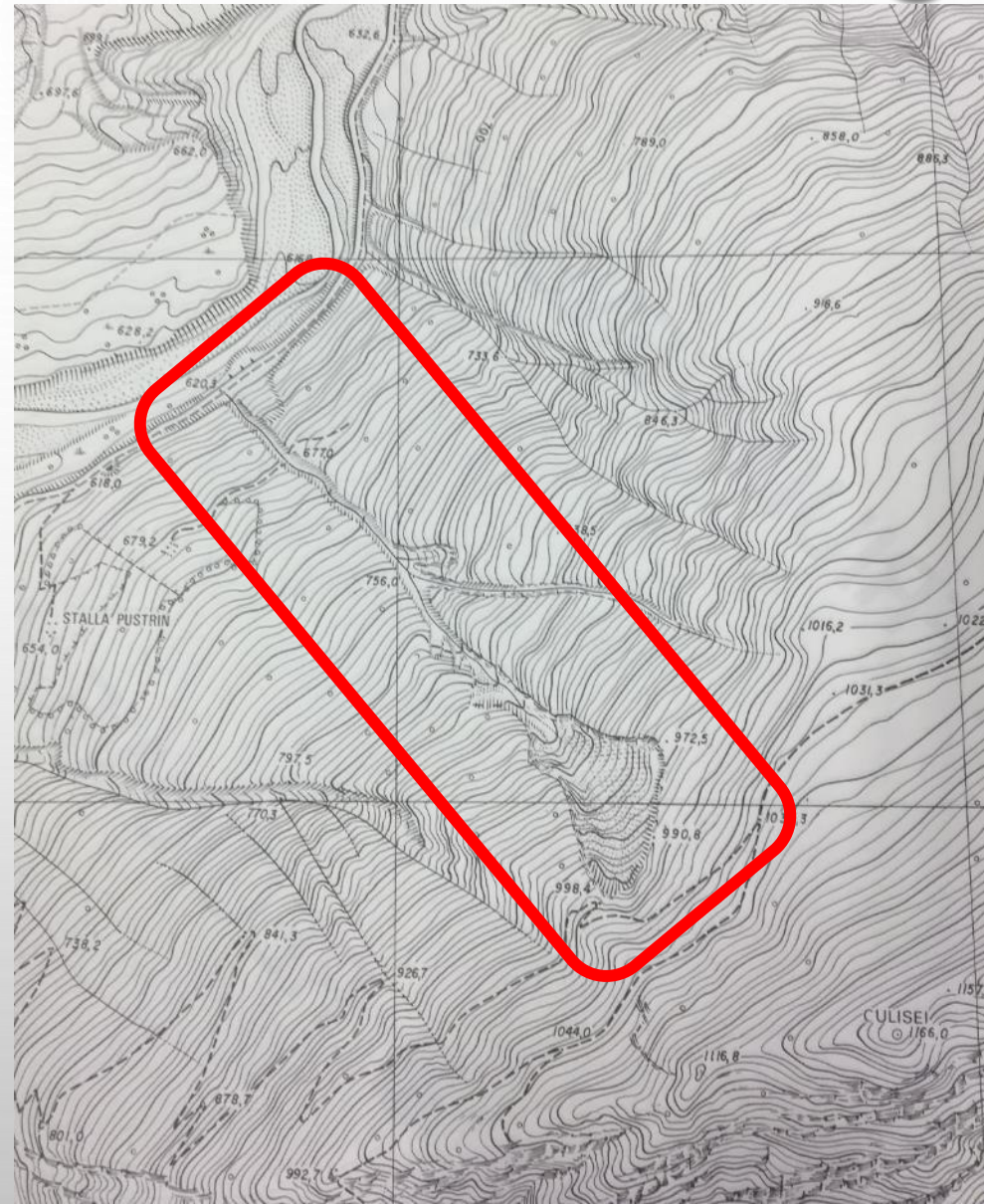
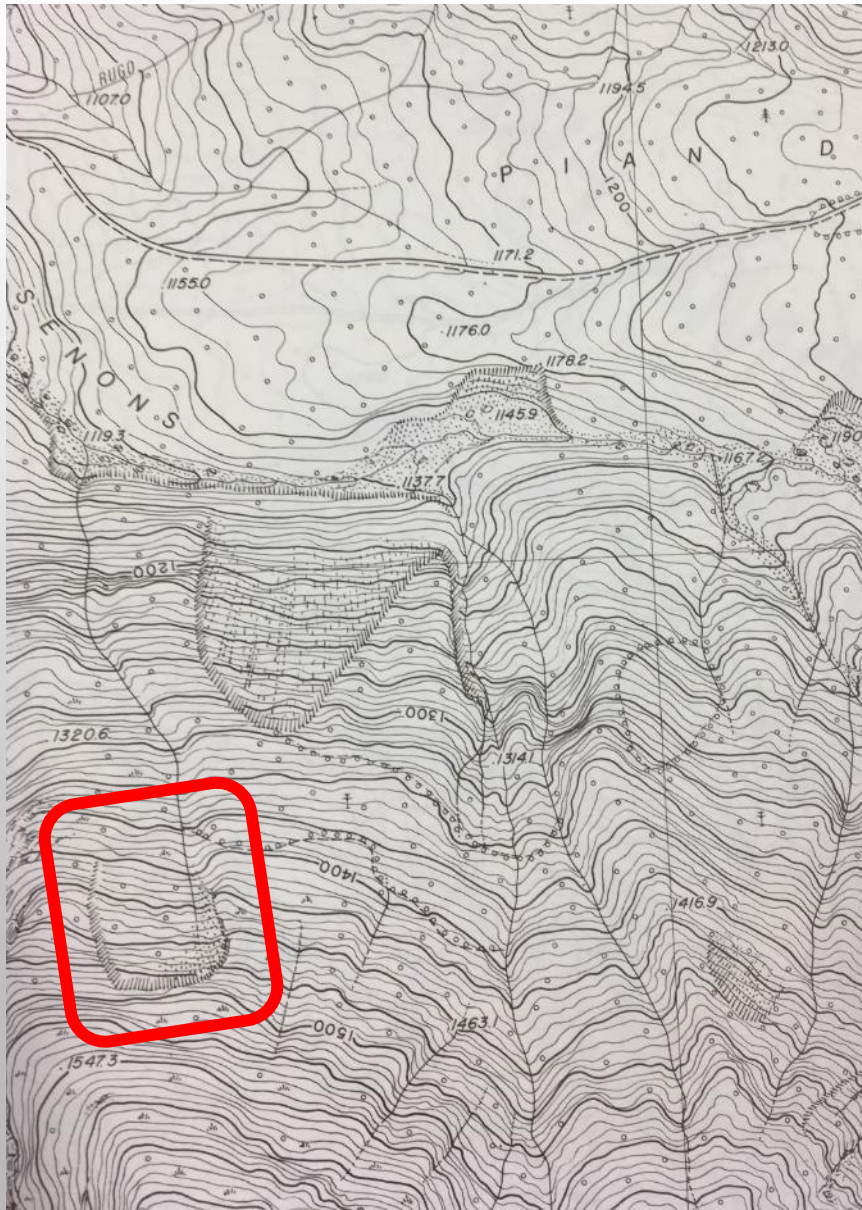
A detailed topographic map showing contour lines and a network of roads. A prominent red outline highlights a specific area on the left side of the map, which appears to be a valley or a specific geographical feature. The map is oriented with North at the top.

**Forra fluviale
(Torrente Cosa - Gerchia)**

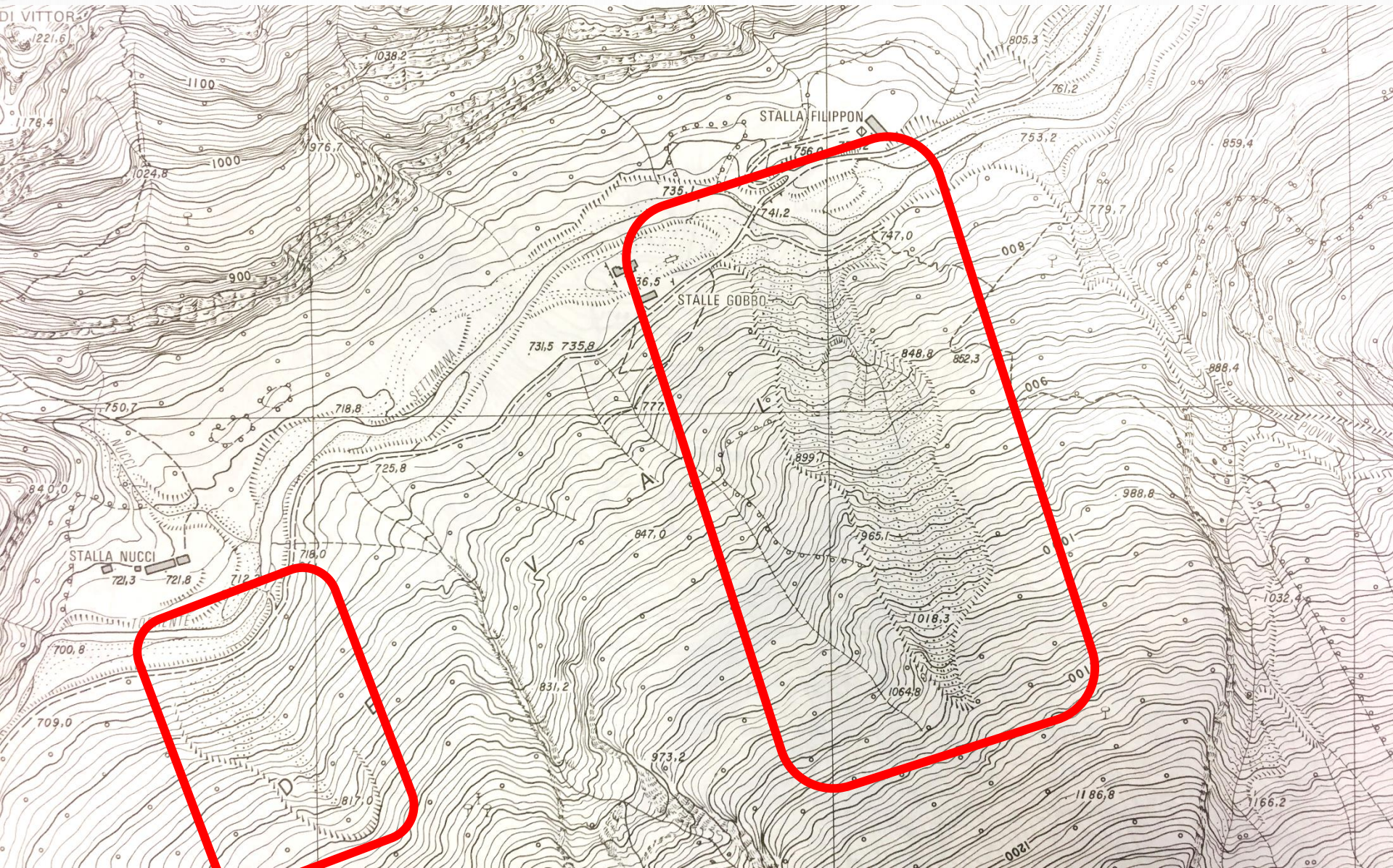
Allineamento delle isoipse: condizionamento strutturale (Faglia del Colle Nero, Doberdò del Lago)



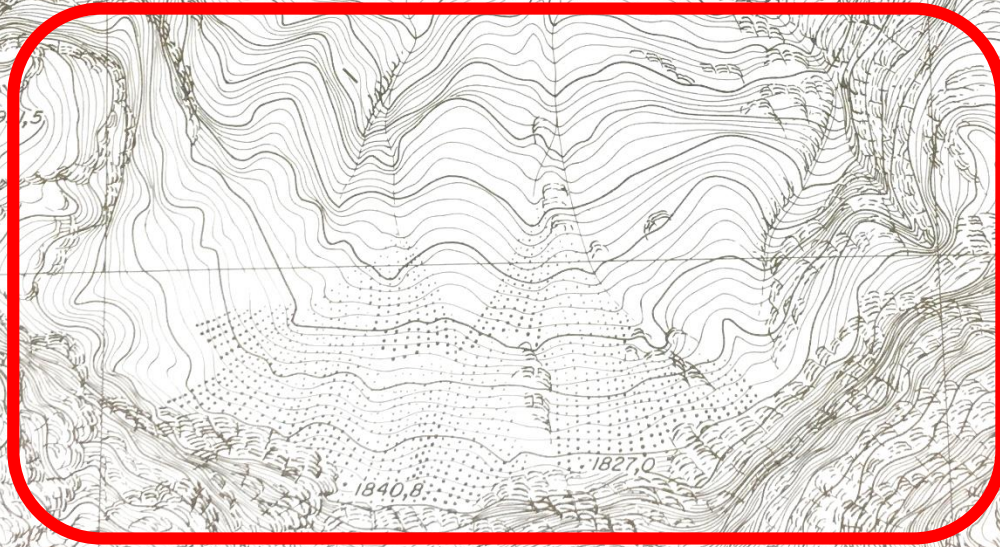
Forme legate alla gravità: frane



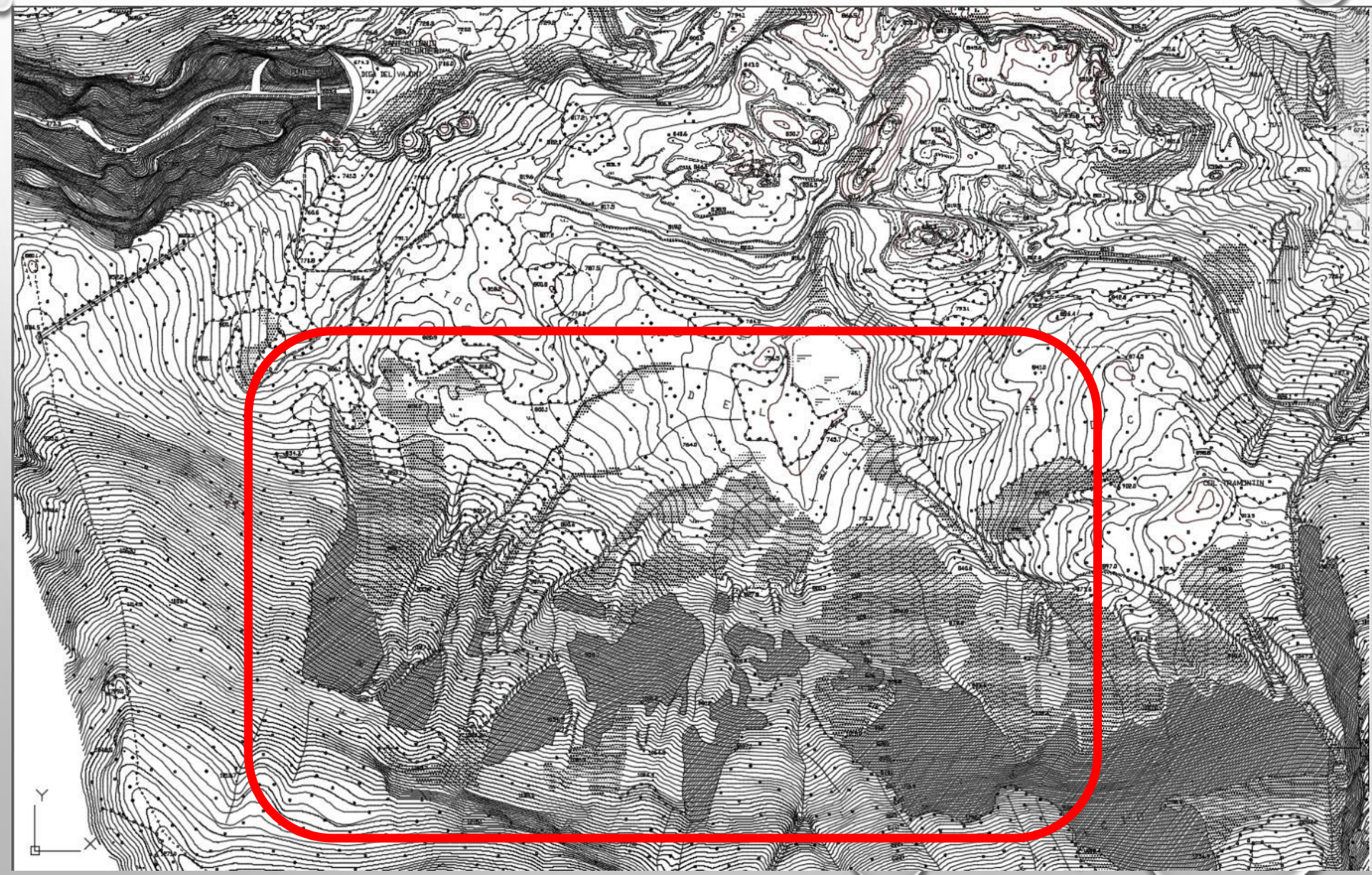
Forme legate alla gravità: frane



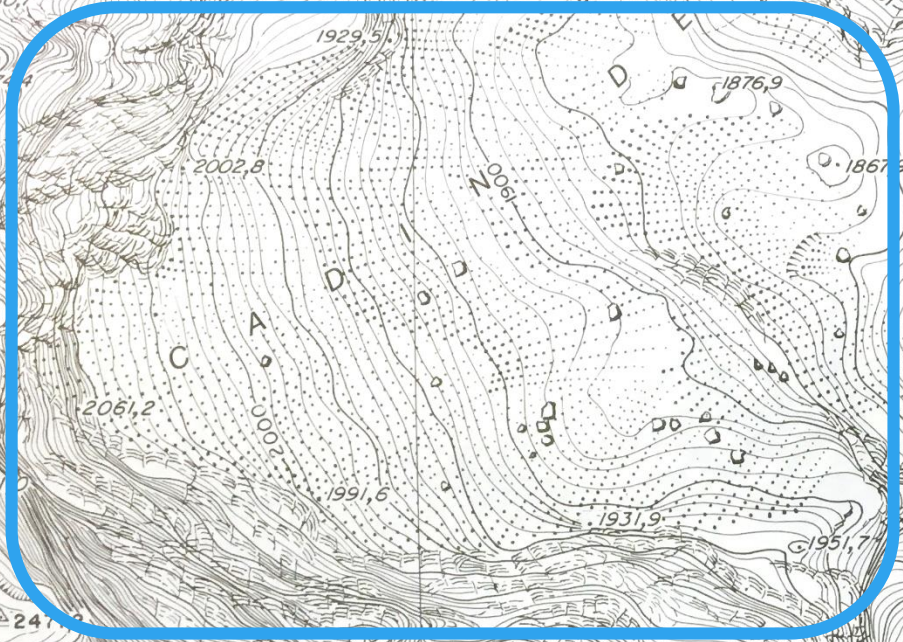
**Forme legate alla gravità:
detrito di falda**



Forme legate alla gravità: frana del Vajont



Circo glaciale,
depositi morenici e
detrito di falda

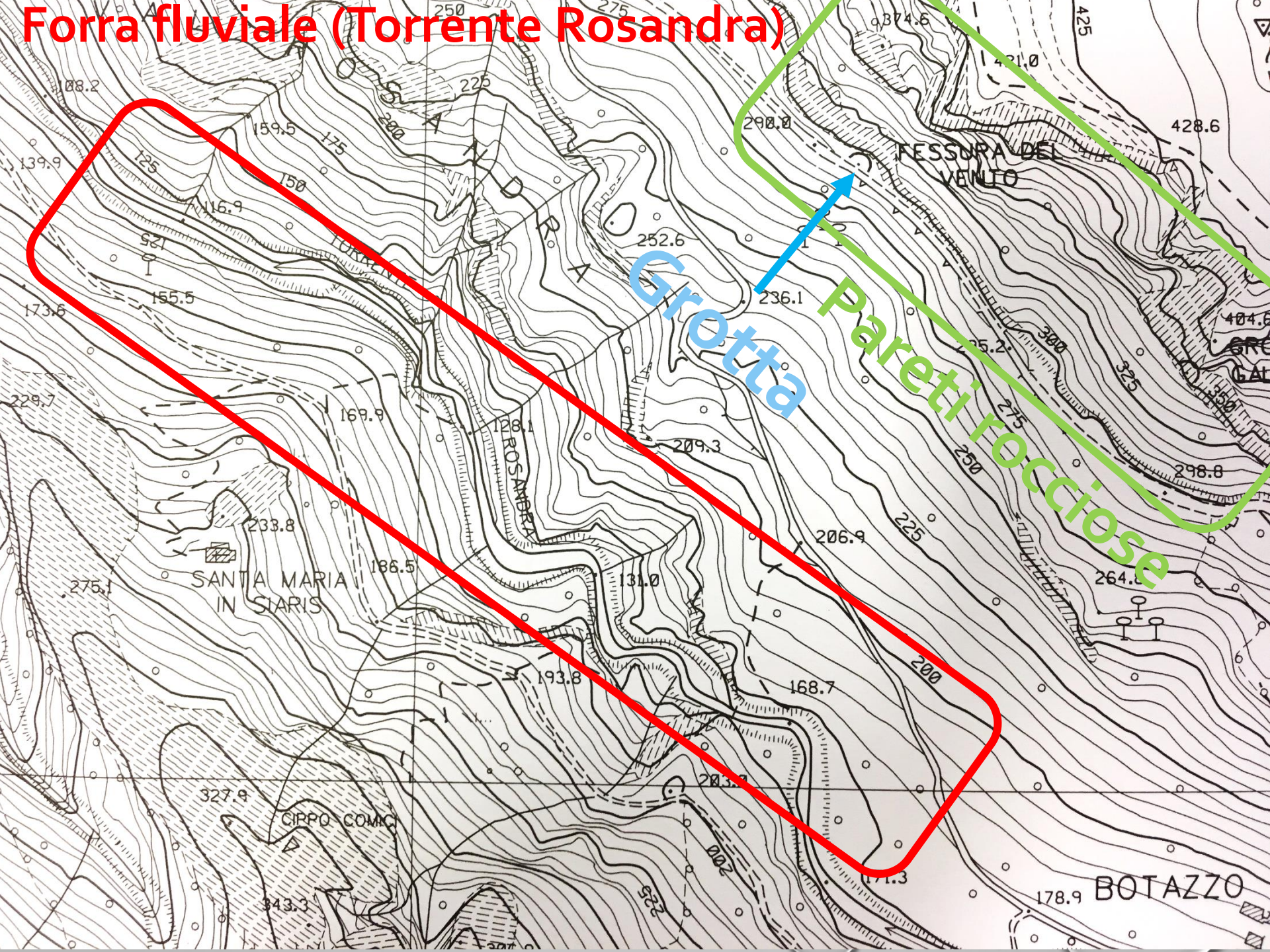


SOGLIA



detrito di falda

Forra fluviale (Torrente Rosandra)



Grotta

Pareti rocciose

SANTA MARIA
IN SIARIS

CIRPO COMICI

BOTAZZO

FESSURA DEL
VENTO

TORRENTE
ROSANDRA

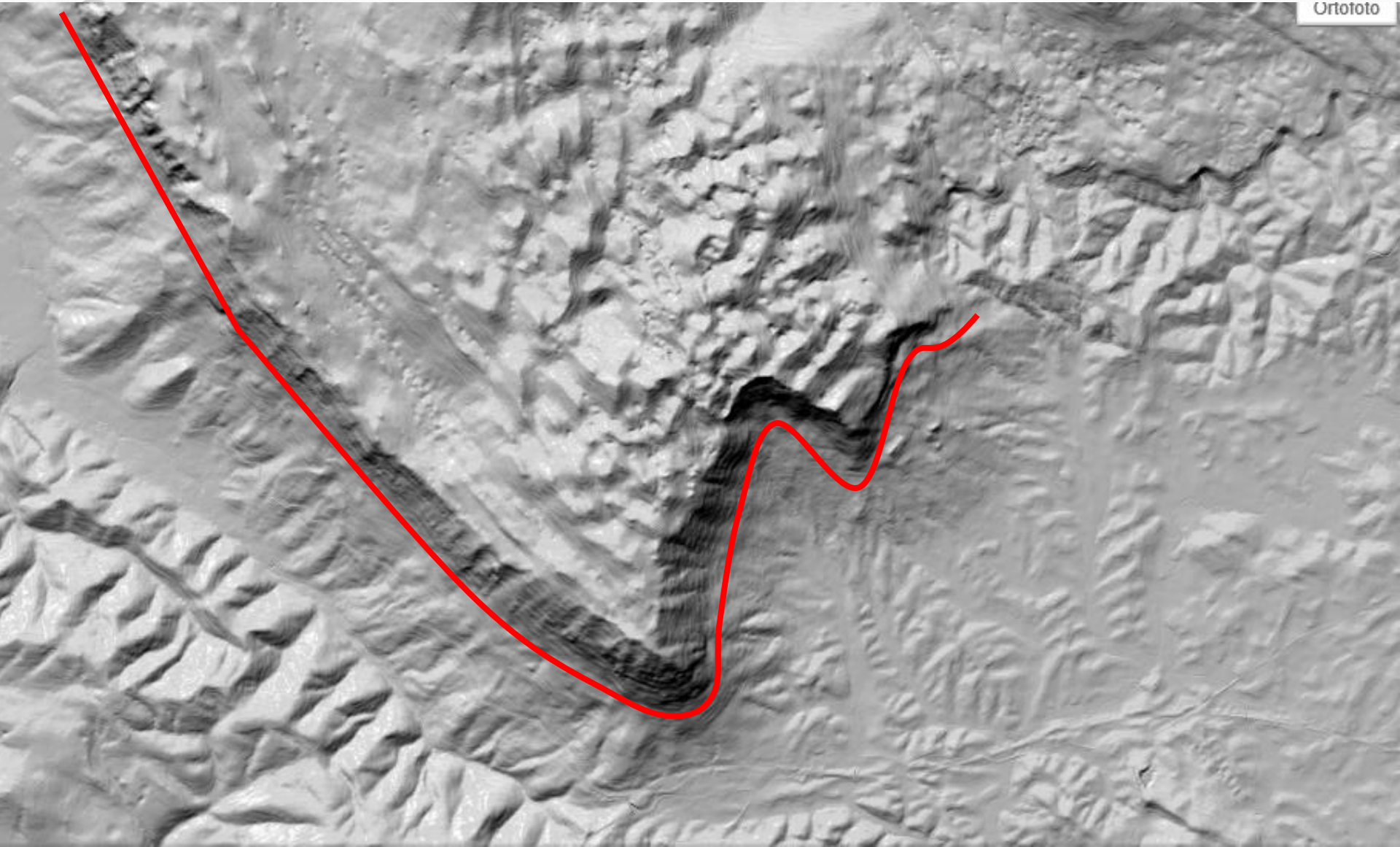
Falesie di Strugnano (Strunjan)

IMMAGINI SATELLITARI

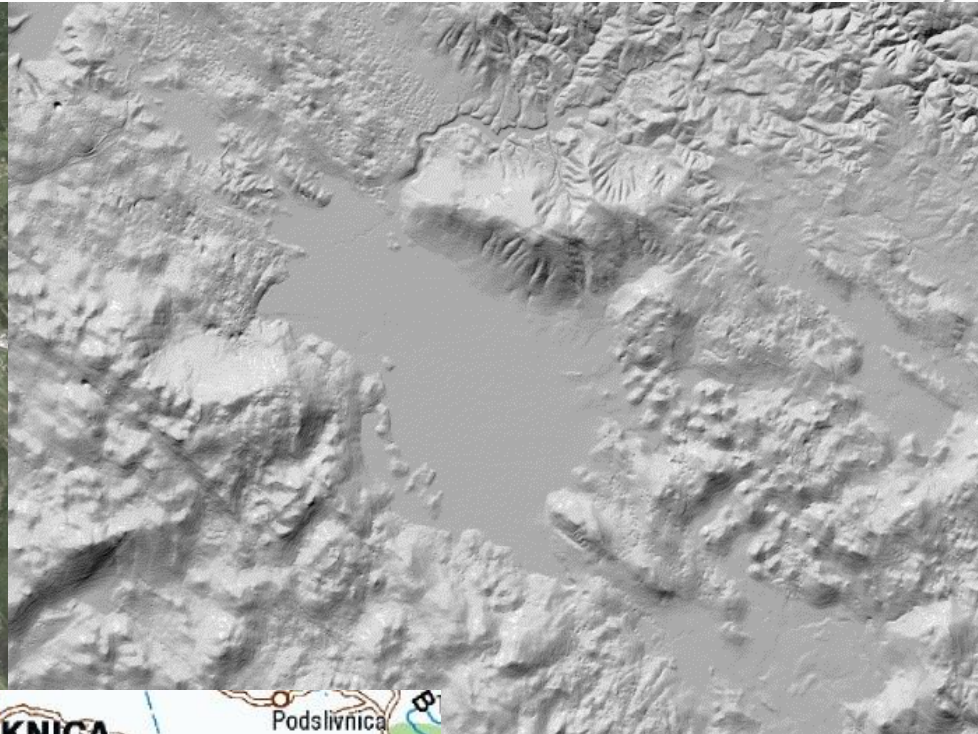
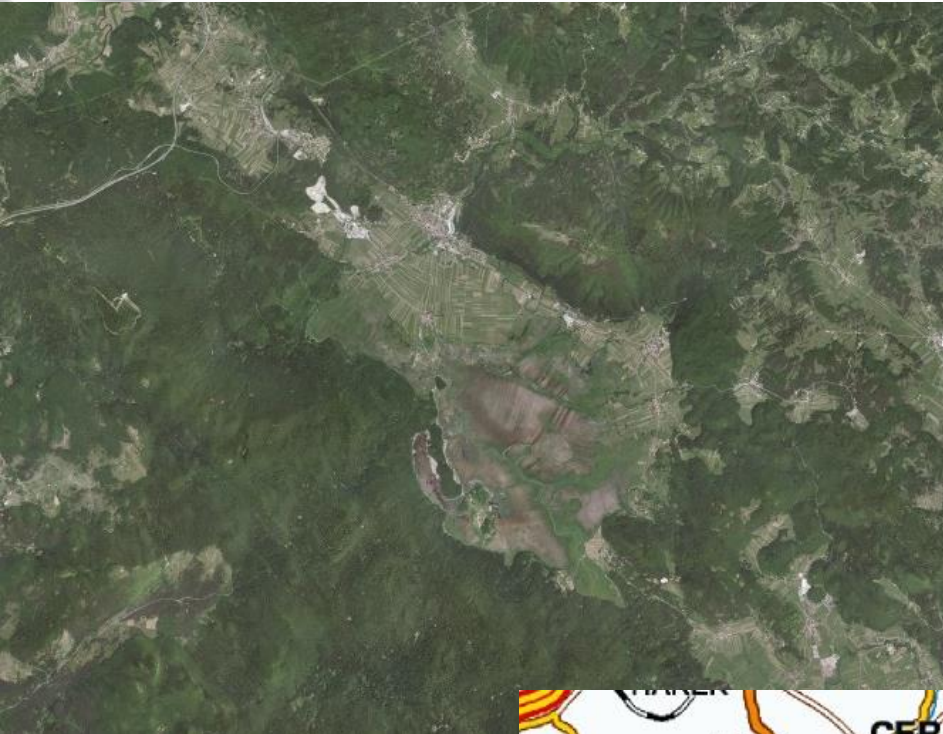


Condizionamento strutturale (Monte Nanos)

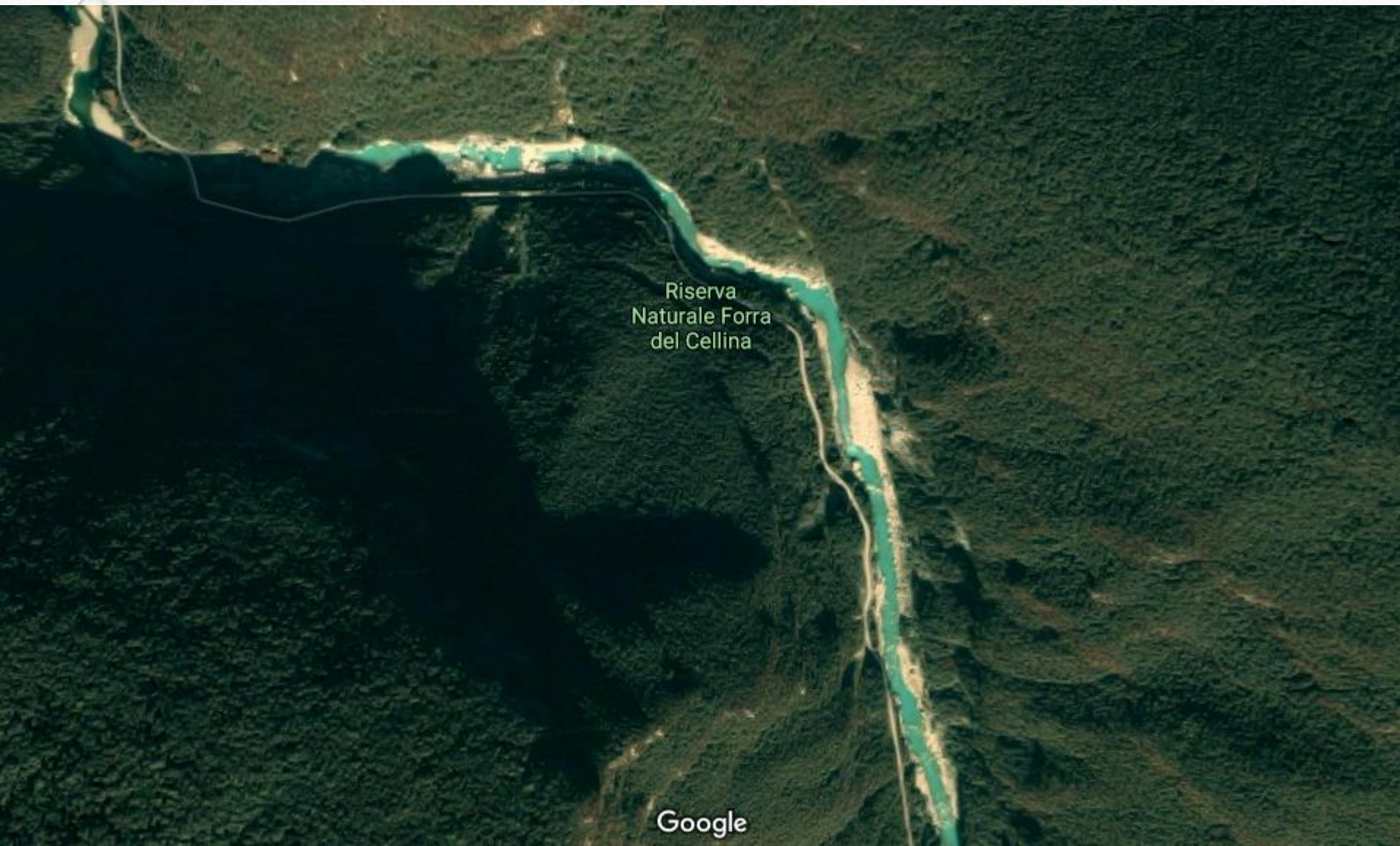
Ortototo



Lago carsico impostato su un importante lineamento strutturale: il Lago Circonio (Cerknisko Jezero)



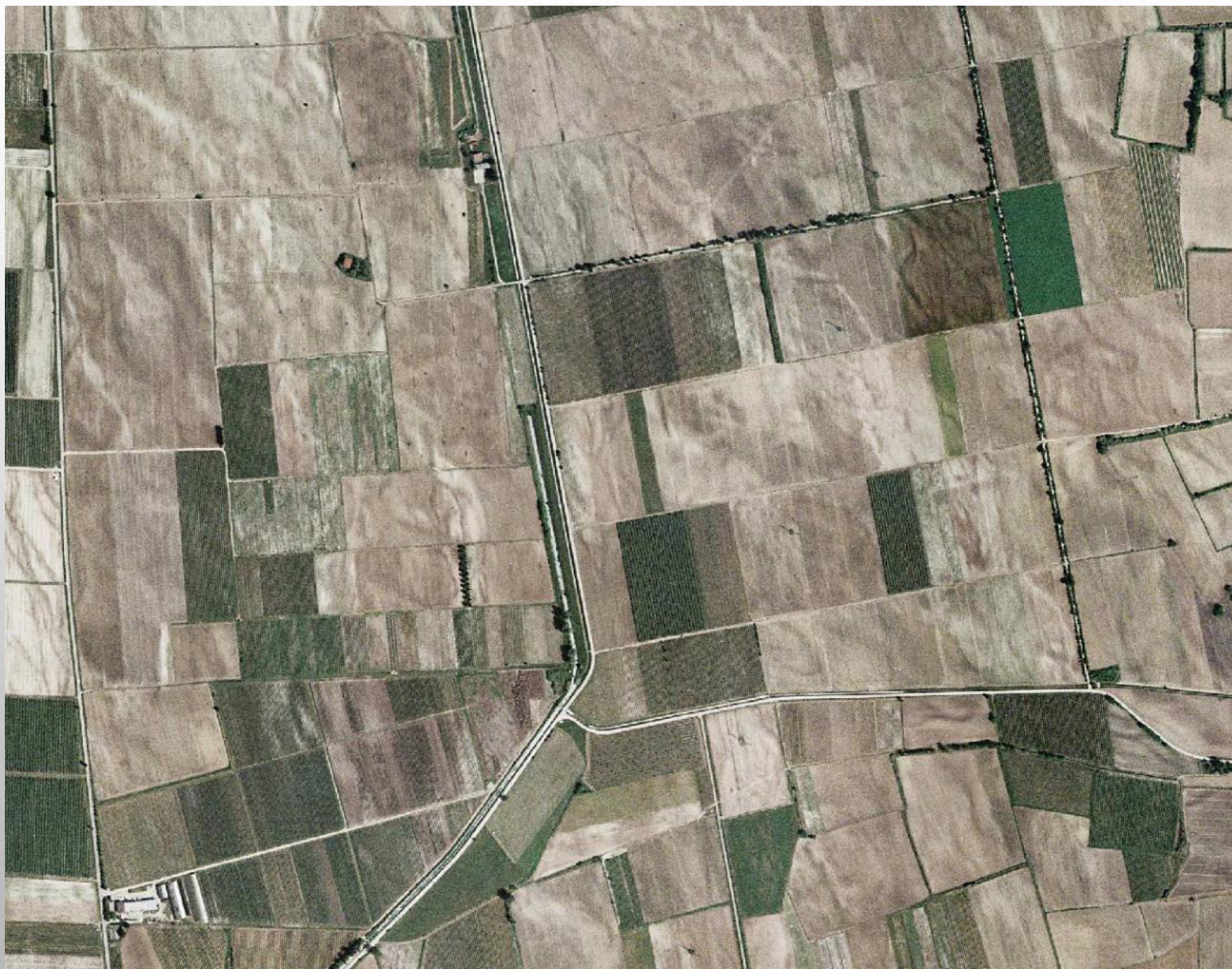
Forra fluviale (Torrente Cellina)



Riserva
Naturale Forra
del Cellina

Google

Tracce di canali fluviali estinti



Altopiano carsico, promontorio di Miramare



Delta del Tagliamento



Altipiano carsico, falesia di Sistiana-Duino



Frana del Vajont

