

Trasformazione di coordinate – Software applicativo

GPTrans - Kin05, Project : Topcon Prova

File Edit Coordinate Systems 7-Parameter... ASCII Format Help

Name	Northing	Easting	Height
------	----------	---------	--------

Units

Feet
Chains
Kilometers
Meters
Meters (Namibia)
Miles
Survey Feet
Yards

OK

New

Edit

Delete

Sort

Help

From : Geographic[WGS84],World Geodetic System 1984[Molodensky],Meters
To : Universal Transverse Mercator[ED50-UTM33],European 1950 (Mean)[Molodensky],Meters,Meters

start

GPSurvey Project : T...

GPSurvey Database ...

Transform - Microsoft...

IT

12:30

Name	Northing	Easting	Height
------	----------	---------	--------

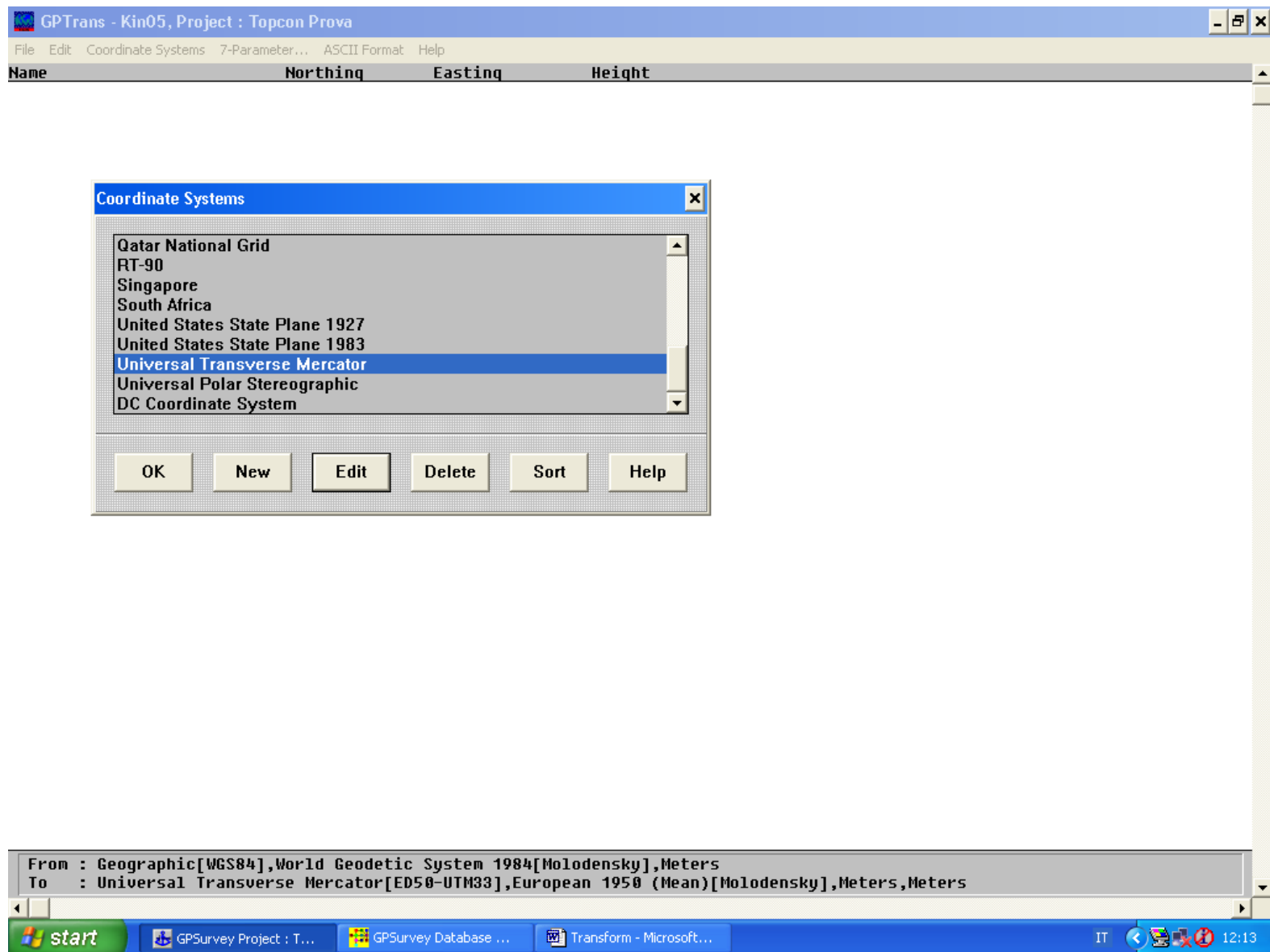
Coordinate Systems

Geographic

- Hong Kong Map Grid
- Irish Map Grid
- Japanese State Plane
- Malaysia Map Grid
- Malaysia State Plane
- Map Projection of Korea
- Namibia
- New South Wales ISG

OK New Edit Delete Sort Help

From : Geographic[WGS84],World Geodetic System 1984[Molodensky],Meters
To : Universal Transverse Mercator[ED50-UTM33],European 1950 (Mean)[Molodensky],Meters,Meters



Name Northing Easting Height

Ellipsoids

- Bessel 1841
- Bessel 1841 (Namibia)
- Clarke 1858
- Clarke 1866
- Clarke 1880**
- Clarke 1880 (ARC 1950)
- Clarke 1880 (French)
- Clarke 1880 (Israel)
- Clarke 1880 (Palistine)

OK New Edit Delete Sort Help

Edit Ellipsoid

Name

Semi-Major Axis [a, meters]

Semi-Minor Axis [b, meters]

Inverse Flattening [1 / f]

OK Cancel Help

From : Geographic[WGS84],World Geodetic System 1984[Molodensky],Meters
 To : Universal Transverse Mercator[ED50-UTM33],European 1950 (Mean)[Molodensky],Meters,Meters

Name	Northing	Easting	Height
------	----------	---------	--------

Ellipsoids

- Hayford 1909
- Helmert 1906
- Hough 1960
- Indonesia 1974
- International (NZLC)
- International 1924**
- Krasovsky 1940
- Modified Airy
- Modified Bessel

OK New Edit Delete Sort Help

Edit Ellipsoid

Name:

Semi-Major Axis [a, meters]	6378388.000
Semi-Minor Axis [b, meters]	6356911.946199967
Inverse Flattening [1 / f]	297.000000996

OK Cancel Help

From : Geographic[WGS84],World Geodetic System 1984[Molodensky],Meters
 To : Universal Transverse Mercator[ED50-UTM33],European 1950 (Mean)[Molodensky],Meters,Meters

Name	Northing	Easting	Height
------	----------	---------	--------

Ellipsoids

- Schott 1900
- South American 1969
- Soviet Geodetic System 1985
- Struve
- War Office 1924
- World Geodetic System 1960
- World Geodetic System 1966
- World Geodetic System 1972
- World Geodetic System 1984**

OK New Edit Delete Sort Help

Edit Ellipsoid

Name: **World Geodetic System 1984**

Semi-Major Axis [a, meters]: 6378137

Semi-Minor Axis [b, meters]: 6356752.314200009

Inverse Flattening [1 / f]: 298.257222933

OK Cancel Help

From : Geographic[WGS84],World Geodetic System 1984[Molodensky],Meters
 To : Universal Transverse Mercator[ED50-UTM33],European 1950 (Mean)[Molodensky],Meters,Meters

Name Northing Easting Height

Ellipsoids

Airy
Airy 1830
Australian National
Bessel 1841
Bessel 1841 (Namibia)
Clarke 1858
Clarke 1866
Clarke 1880
Clarke 1880 (ARC 1950)

OK

New

Edit

Delete

Sort

Help

Edit Ellipsoid

Name Bessel 1841

Semi-Major Axis [a, meters] 6377397.1550000003
Semi-Minor Axis [b, meters] 6356078.962899997
Inverse Flattening [1 / f] 299.152813948

OK

Cancel

Help

From : Geographic[WGS84],World Geodetic System 1984[Molodensky],Meters
To : Universal Transverse Mercator[ED50-UTM33],European 1950 (Mean)[Molodensky],Meters,Meters

Name	Northing	Easting	Height
------	----------	---------	--------

Datums

- European 1950 (Greece)
- European 1950 (Iran)
- European 1950 (Italy/Sardinia)
- European 1950 (Italy/Sicily)
- European 1950 (Malta)
- European 1950 (Mean)**
- European 1950 (Middle East)
- European 1950 (Norway/Finland)
- European 1950 (Portugal/Spain)

OK New Edit Delete Sort Help

Edit Datum

Name

Ellipsoid

OK Cancel Help

From : Geographic[WGS84],World Geodetic System 1984[Molodensky],Meters
To : Universal Transverse Mercator[ED50-UTM33],European 1950 (Mean)[Molodensky],Meters,Meters

Name	Northing	Easting	Height
------	----------	---------	--------

Datums

- Provisional South Chilean 1963
- Puerto Rico
- Pulkovo 1942 (Russia)
- Qatar
- Qornoq (South Greenland)
- Reunion (Mascarene Is)
- Rome 1940 (Sardinia)
- S-42 (Hungary)
- S-JTSK (Czechoslovakia)

OK New Edit Delete Sort Help

Edit Datum

Name: Rome 1940 (Sardinia)

Ellipsoid: International 1924

OK Cancel Help

From : Geographic[WGS84],World Geodetic System 1984[Molodensky],Meters
To : Universal Transverse Mercator[ED50-UTM33],European 1950 (Mean)[Molodensky],Meters,Meters

Name	Northing	Easting	Height
------	----------	---------	--------

Datums

Tristan Astro 1968
Viti Levu 1916 (Fiji)
Voirol (Algeria)
Wake Is Astro 1952
Wake-Eniwetok 1960 (Marshall Is)
World Geodetic System 1984
Yacare (Uruguay)
Zanderij (Suriname)
DC Datum

OK

New

Edit

Delete

Sort

Help

Edit Datum

Name

World Geodetic System 1984

Ellipsoid

World Geodetic System 1984

OK

Cancel

Help

From : Geographic[WGS84],World Geodetic System 1984[Molodensky],Meters
To : Universal Transverse Mercator[ED50-UTM33],European 1950 (Mean)[Molodensky],Meters,Meters

Name	Northing	Easting	Height
------	----------	---------	--------

Zones

Select Coordinate System

Universal Transverse Mercator

- South 57
- South 58
- South 59
- South 6
- South 60
- South 7
- South 8
- South 9
- UTM-WGS84(F33)**

OK New Edit Delete Sort Help

From : Geographic[WGS84],World Geodetic System 1984[Molodensky],Meters
To : Universal Transverse Mercator[ED50-UTM33],European 1950 (Mean)[Molodensky],Meters,Meters

Name Northing Easting Height

Zones

Select Coordinate System

Universal Transverse Mercator

Edit Zone

Name

UTM-WGS84(F33)

Projection

Transverse Mercator

Datum Conversion Method

Molodensky

Datum

World Geodetic System 1984

Horizontal Units

Meters

Vertical Units

Meters

OK Cancel Help

Projection Parameters

Latitude of Origin 0°

Central Meridian 15°

False Northing 0

False Easting 500000

False Height 0

Scale Factor 0.9996

From : Geographic[WGS84],World Geodetic System 1984[Molodensky],Meters
To : Universal Transverse Mercator[ED50-UTM33],European 1950 (Mean)[Molodensky],Meters,Meters

Zones

Select Coordinate System

Universal Transverse Mercator

- 31V
- 31X
- 32V
- 33X
- 35X
- 37X
- ED50-UTM32
- ED50-UTM33**
- GB-Fuso Est

OK New Edit Delete Sort Help

From : Geographic[WGS84],World Geodetic System 1984[Molodensky],Meters
To : Universal Transverse Mercator[ED50-UTM33],European 1950 (Mean)[Molodensky],Meters,Meters

Name Northing Easting Height

Zones

Select Coordinate System

Universal Transverse Mercator

Edit Zone

Name

ED50-UTM33

Projection

Transverse Mercator

Datum Conversion Method

Molodensky

Datum

European 1950 (Mean)

Horizontal Units

Meters

Vertical Units

Meters

OK Cancel Help

Projection Parameters

Latitude of Origin 0°

Central Meridian 15°

False Northing 0

False Easting 500000

False Height 0

Scale Factor 0.9996

From : Geographic[WGS84],World Geodetic System 1984[Molodensky],Meters
To : Universal Transverse Mercator[ED50-UTM33],European 1950 (Mean)[Molodensky],Meters,Meters

Zones

Select Coordinate System

Universal Transverse Mercator

31X
32V
33X
35X
37X
ED50-UTM32
ED50-UTM33
GB-Fuso Est
GB-Fuso Ovest

OK New Edit Delete Sort Help

From : Geographic[WGS84],World Geodetic System 1984[Molodensky],Meters
To : Universal Transverse Mercator[ED50-UTM33],European 1950 (Mean)[Molodensky],Meters,Meters

Name Northing Easting Height

Zones

Select Coordinate System

Universal Transverse Mercator

Edit Zone

Name

ED50-UTM32

Projection

Transverse Mercator

Datum Conversion Method

Molodensky

Datum

European 1950 (Mean)

Horizontal Units

Meters

Vertical Units

Meters

OK Cancel Help

Projection Parameters

Latitude of Origin	0°
Central Meridian	9°
False Northing	0
False Easting	500000
False Height	0
Scale Factor	0.9996

From : Geographic[WGS84],World Geodetic System 1984[Molodensky],Meters
To : Universal Transverse Mercator[ED50-UTM33],European 1950 (Mean)[Molodensky],Meters,Meters

Name	Northing	Easting	Height
------	----------	---------	--------

Zones

Select Coordinate System

Universal Transverse Mercator

31X
32V
33X
35X
37X
ED50-UTM32
ED50-UTM33
GB-Fuso Est
GB-Fuso Ovest

OK New Edit Delete Sort Help

From : Geographic[WGS84],World Geodetic System 1984[Molodensky],Meters
To : Universal Transverse Mercator[ED50-UTM33],European 1950 (Mean)[Molodensky],Meters,Meters

Zones

Select Coordinate System

Universal Transverse Mercator

Edit Zone

Name

GB-Fuso Est

Projection

Transverse Mercator

Datum Conversion Method

Molodensky

Datum

Rome 1940 (Sardinia)

Horizontal Units Vertical Units

Meters Meters

OK Cancel Help

Projection Parameters

Latitude of Origin	0°
Central Meridian	15°
False Northing	0
False Easting	2520000
False Height	0
Scale Factor	0.9996

From : Geographic[WGS84],World Geodetic System 1984[Molodensky],Meters
 To : Universal Transverse Mercator[ED50-UTM33],European 1950 (Mean)[Molodensky],Meters,Meters

Name	Northing	Easting	Height
------	----------	---------	--------

Zones

Select Coordinate System

Universal Transverse Mercator

31X
32V
33X
35X
37X
ED50-UTM32
ED50-UTM33
GB-Fuso Est
GB-Fuso Ovest

OK New Edit Delete Sort Help

From : Geographic[WGS84],World Geodetic System 1984[Molodensky],Meters
To : Universal Transverse Mercator[ED50-UTM33],European 1950 (Mean)[Molodensky],Meters,Meters

Name Northing Easting Height

Zones

Select Coordinate System
Universal Transverse Mercator

Edit Zone

Name
GB-Fuso Ovest

Projection
Transverse Mercator

Datum Conversion Method
Molodensky

Datum
Rome 1940 (Sardinia)

Horizontal Units
Meters

Vertical Units
Meters

OK Cancel Help

Projection Parameters

Latitude of Origin	0°
Central Meridian	9°
False Northing	0
False Easting	1500000
False Height	0
Scale Factor	0.9996

From : Geographic[WGS84],World Geodetic System 1984[Molodensky],Meters
To : Universal Transverse Mercator[ED50-UTM33],European 1950 (Mean)[Molodensky],Meters,Meters

Name	Northing	Easting	Height
------	----------	---------	--------

7-Parameter Datum Conversions

AGD66 (NSW)
Cape (South Africa)
ED50 (Finland)
ED50 (Portugal/Spain)
Geodetic Datum 1949 (NZLC)
Germany (East)
Germany (West)
Kertau 1948 (West Malaysia/Singapore)
Korean Geodetic System

OK

New

Edit

Delete

Sort

Help

From : Geographic[WGS84],World Geodetic System 1984[Molodensky],Meters
To : Universal Transverse Mercator[ED50-UTM33],European 1950 (Mean)[Molodensky],Meters,Meters

Name	Northing	Easting	Height
------	----------	---------	--------

7-Parameter Datum Conversions

Germany (East)
 Germany (West)
 Kertau 1948 (West Malaysia/Singapore)
 Korean Geodetic System
 Namibia
 Sweden
 Geodetic Datum 1949 (New Zealand)
 Qatar
 DC Seven Parameter Datum

OK

New

Edit

Delete

Sort

Help

Edit Seven Parameter Datum Conversion

Name

Datum

X Translation [meters]

Y Translation [meters]

Z Translation [meters]

X Rotation [seconds]

Y Rotation [seconds]

Z Rotation [seconds]

Scale Factor

Local -> WGS 84 WGS 84 -> Local

OK

Cancel

Help

From : Geographic[WGS84],World Geodetic System 1984[Molodensky],Meters
 To : Universal Transverse Mercator[ED50-UTM33],European 1950 (Mean)[Molodensky],Meters,Meters

Name	Northing	Easting	Height
------	----------	---------	--------

7-Parameter Datum Conversions

AGD66 (NSW)
Cape (South Africa)
ED50 (Finland)
ED50 (Portugal/Spain)
Geodetic Datum 1949 (NZLC)
Germany (East)
Germany (West)
Kertau 1948 (West Malaysia/Singapore)
Korean Geodetic System

OK

New

Edit

Delete

Sort

Help

Edit Seven Parameter Datum Conversion

Name **ED50 (Finland)**

Datum **European 1950 (Norway/Finland)**

X Translation (meters) **92.34**

Y Translation (meters) **104.62**

Z Translation (meters) **123.81**

X Rotation (seconds) **-0.27**

Y Rotation (seconds) **0.07**

Z Rotation (seconds) **0.1**

Scale Factor **0.999998**

Local -> WGS 84 WGS 84 -> Local

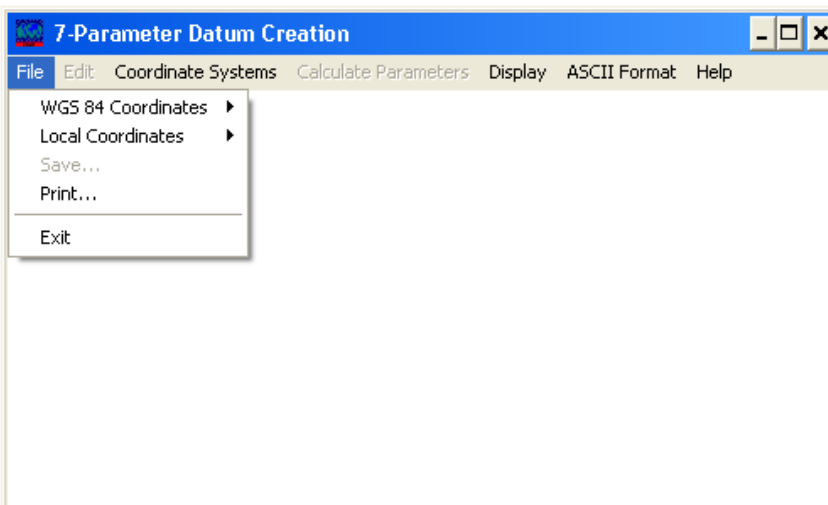
OK

Cancel

Help

From : Geographic[WGS84],World Geodetic System 1984[Molodensky],Meters
To : Universal Transverse Mercator[ED50-UTM33],European 1950 (Mean)[Molodensky],Meters,Meters

Name	Northing	Easting	Height
------	----------	---------	--------



From : Geographic[WGS84],World Geodetic System 1984[Molodensky],Meters
To : Universal Transverse Mercator[ED50-UTM33],European 1950 (Mean)[Molodensky],Meters,Meters

Name	Northing	Easting	Height
------	----------	---------	--------

Coordinate Systems Settings

From Coordinate System

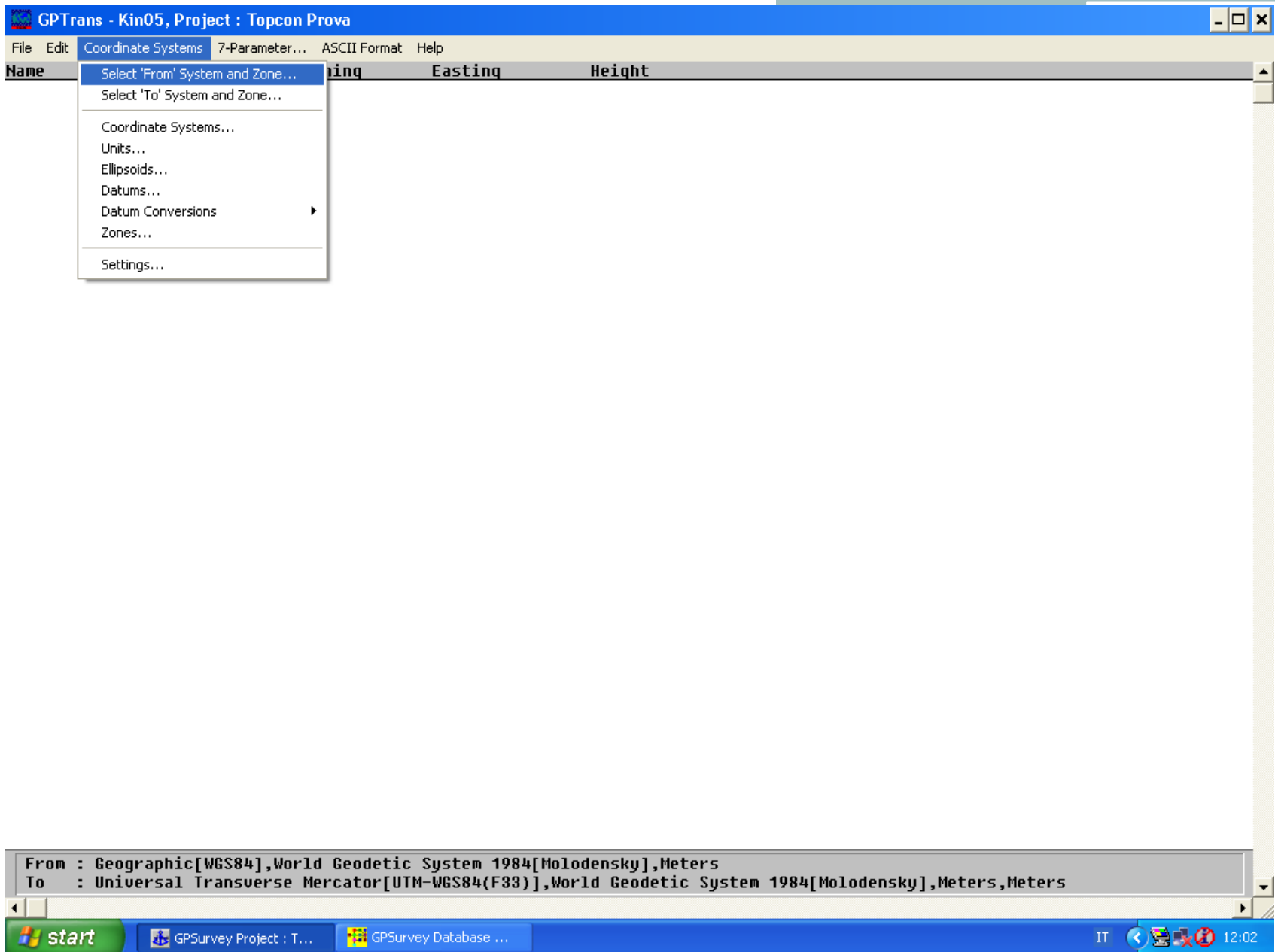
Coordinate System	Geographic		
Zone	WGS84		
Projection	n/a	Horz Units	n/a
Datum	World Geodetic System 1984		
Ellipsoid	World Geodetic System 1984	Method	Molodensky
Height Mode	Ellipsoid	Vert Units	Meters

To Coordinate System

Coordinate System	Universal Transverse Mercator		
Zone	ED50-UTM33		
Projection	Transverse Mercator	Horz Units	Meters
Datum	European 1950 (Mean)		
Ellipsoid	International 1924	Method	Molodensky
Height Mode	Ellipsoid	Vert Units	Meters

OK

From : Geographic[WGS84],World Geodetic System 1984[Molodensky],Meters
To : Universal Transverse Mercator[ED50-UTM33],European 1950 (Mean)[Molodensky],Meters,Meters



Name	Northing	Easting	Height
------	----------	---------	--------

Select 'From' Coordinate System

Coordinate System

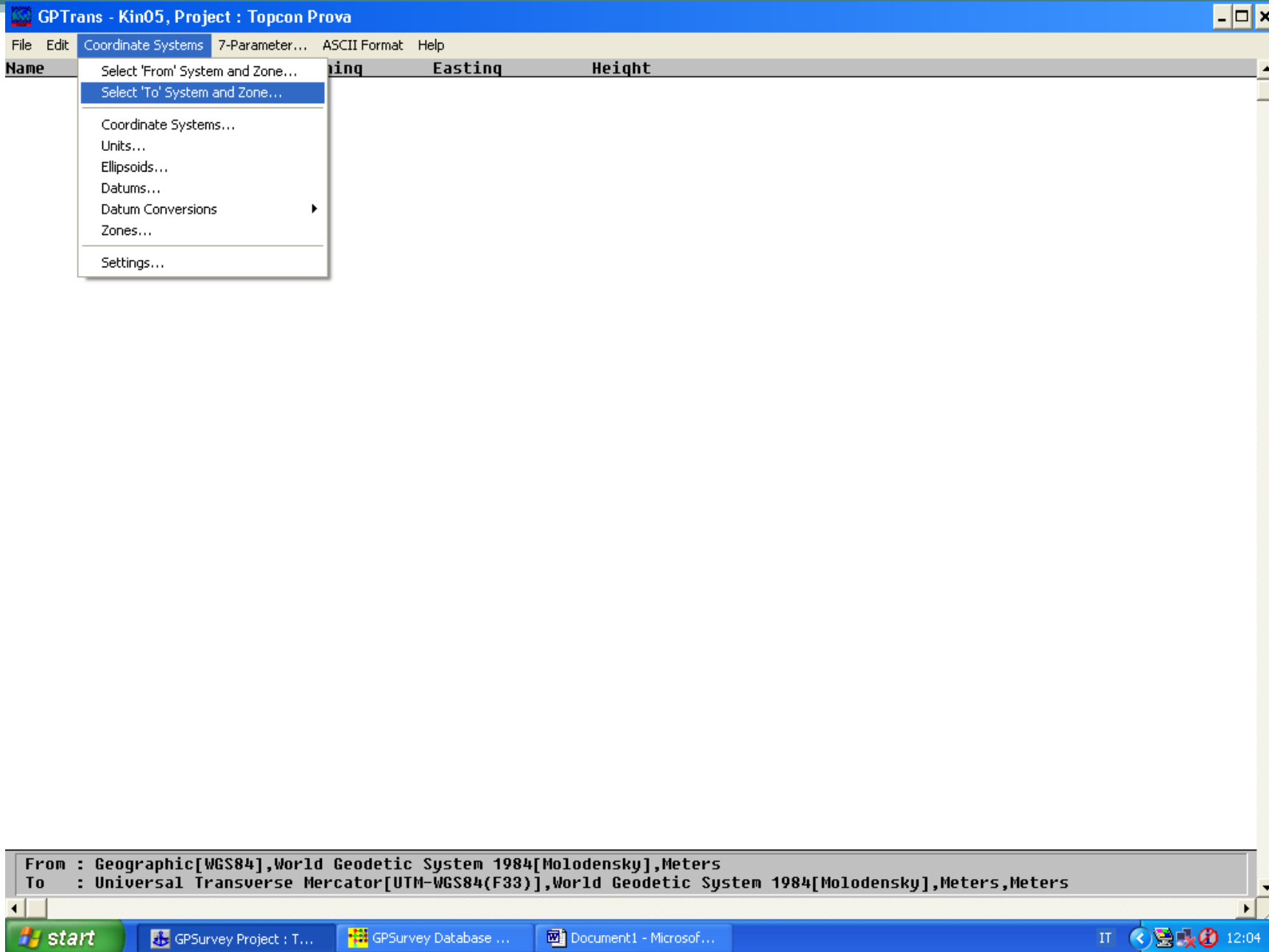
Geographic

Zone

ED50
NAD27 (Conus)
NAD27 (Alaska)
NAD83
WGS84
ITA40

OK Cancel Help

From : Geographic[WGS84],World Geodetic System 1984[Molodensky],Meters
To : Universal Transverse Mercator[UTM-WGS84(F33)],World Geodetic System 1984[Molodensky],Meters,Meters



Select 'To' Coordinate System

Coordinate System

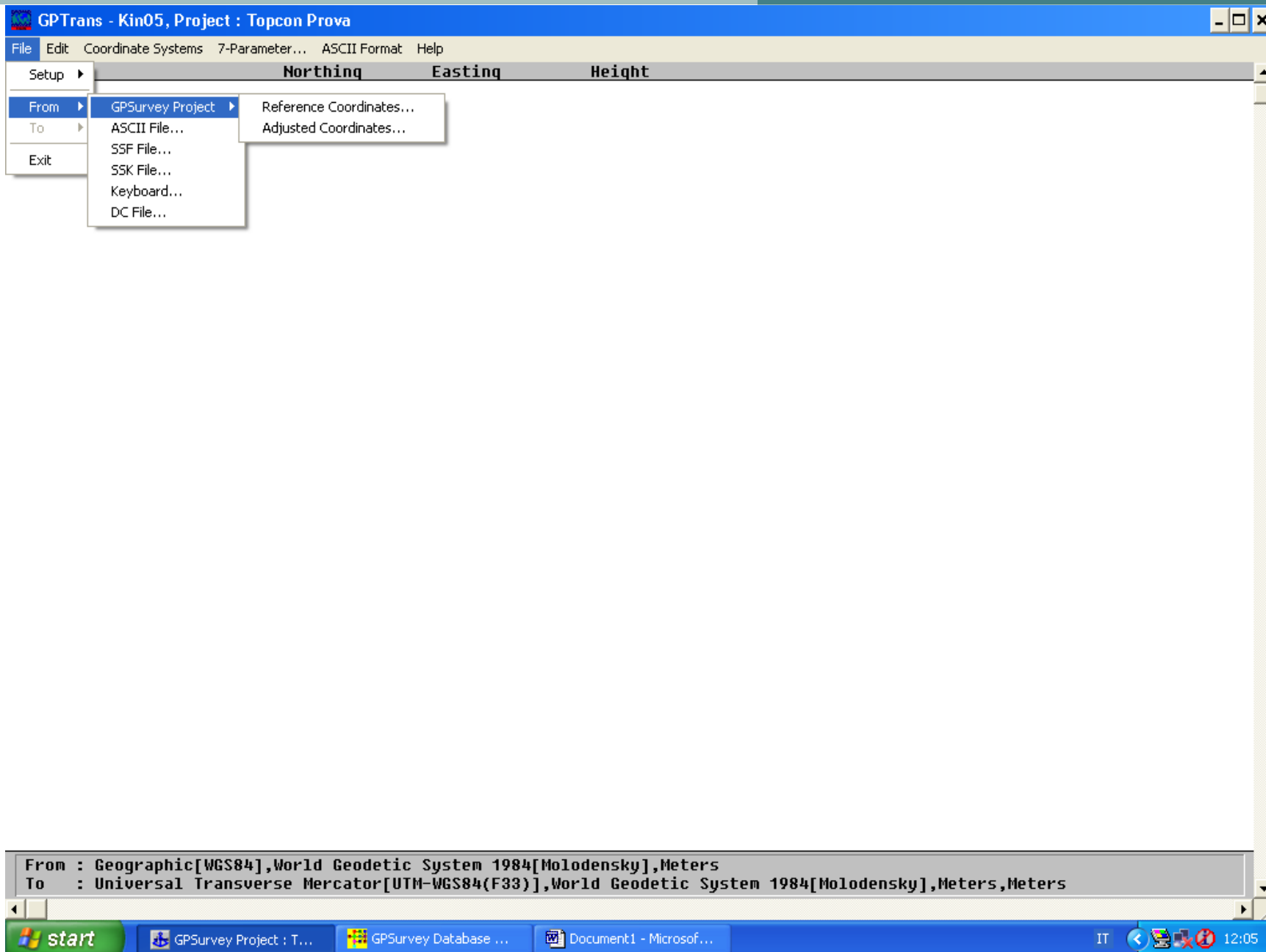
Universal Transverse Mercator

Zone

South 57
South 58
South 59
South 6
South 60
South 7
South 8
South 9
UTM-WGS84(F33)

OK Cancel Help

From : Geographic[WGS84],World Geodetic System 1984[Molodensky],Meters
To : Universal Transverse Mercator[UTM-WGS84(F33)],World Geodetic System 1984[Molodensky],Meters,Meters



Name	Northing	Easting	Height
------	----------	---------	--------

From SSK File(s)

File name:

00000154.SSK

Folders:

c:\...\cinemati\trimvec

OK

Cancel

Network...

List files of type:

SSK files (*.ssk)

Drives:

c:

From : Geographic[WGS84],World Geodetic System 1984[Molodensky],Meters

To : Universal Transverse Mercator[UTM-WGS84(F33)],World Geodetic System 1984[Molodensky],Meters,Meters

Name	Northing	Easting	Height
295855.000_1294	5057162.979	406069.865	163.053
295860.000_1294	5057162.967	406069.864	163.036
295865.000_1294	5057162.964	406069.865	163.031
295870.000_1294	5057162.978	406069.868	163.046
295875.000_1294	5057162.977	406069.867	163.046
295880.000_1294	5057162.991	406069.868	163.066
295885.000_1294	5057162.991	406069.869	163.069
295890.000_1294	5057163.001	406069.872	163.076
295895.000_1294	5057163.003	406069.872	163.081
295900.000_1294	5057163.005	406069.875	163.082
295905.000_1294	5057163.009	406069.874	163.080
295910.000_1294	5057162.994	406069.869	163.064
295915.000_1294	5057162.991	406069.867	163.066
295920.000_1294	5057163.006	406069.873	163.078
295925.000_1294	5057162.986	406069.868	163.057
295930.000_1294	5057162.984	406069.866	163.056
295935.000_1294	5057162.985	406069.866	163.056
295940.000_1294	5057162.993	406069.865	163.065
295945.000_1294	5057162.994	406069.862	163.072
295950.000_1294	5057163.002	406069.868	163.075
295955.000_1294	5057162.979	406069.859	163.047
295960.000_1294	5057162.973	406069.859	163.040
295965.000_1294	5057162.970	406069.856	163.034
295970.000_1294	5057162.967	406069.854	163.033
295975.000_1294	5057162.971	406069.855	163.042
295980.000_1294	5057162.964	406069.852	163.035
295985.000_1294	5057162.959	406069.854	163.026
295990.000_1294	5057162.953	406069.835	163.154
295995.000_1294	5057167.779	406069.472	163.267
296000.000_1294	5057170.383	406069.443	163.138
296005.000_1294	5057170.073	406070.007	163.157
296010.000_1294	5057168.374	406071.400	163.116
296015.000_1294	5057167.051	406076.025	163.768
296020.000_1294	5057163.729	406077.762	164.698
296025.000_1294	5057160.056	406078.323	166.067
296030.000_1294	5057156.873	406079.313	166.708
296035.000_1294	5057155.643	406077.985	166.561
296040.000_1294	5057155.478	406078.106	166.447
296045.000_1294	5057155.567	406078.192	166.536
296050.000_1294	5057155.516	406078.121	166.515
296055.000_1294	5057155.512	406078.119	166.506

From : Geographic[WGS84],World Geodetic System 1984[Molodensky],Meters

To : Universal Transverse Mercator[UTM-WGS84(F33)],World Geodetic System 1984[Molodensky],Meters,Meters

Name	Northing	Easting	Height
------	----------	---------	--------

Select 'To' Coordinate System

Coordinate System

Universal Transverse Mercator

Zone

35X

37X

ED50-UTM32

ED50-UTM33

GB-Fuso Est

GB-Fuso Ovest

North 1

North 10

North 11

OK

Cancel

Help

From : Geographic[WGS84],World Geodetic System 1984[Molodensky],Meters

To : Universal Transverse Mercator[UTM-WGS84(F33)],World Geodetic System 1984[Molodensky],Meters,Meters

Name	Northing	Easting	Height
295855.000_1294	5057355.729	406141.369	120.643
295860.000_1294	5057355.717	406141.368	120.625
295865.000_1294	5057355.714	406141.369	120.621
295870.000_1294	5057355.728	406141.372	120.636
295875.000_1294	5057355.727	406141.371	120.636
295880.000_1294	5057355.741	406141.372	120.656
295885.000_1294	5057355.742	406141.373	120.658
295890.000_1294	5057355.752	406141.376	120.666
295895.000_1294	5057355.753	406141.376	120.670
295900.000_1294	5057355.755	406141.379	120.672
295905.000_1294	5057355.759	406141.378	120.670
295910.000_1294	5057355.744	406141.373	120.653
295915.000_1294	5057355.741	406141.371	120.656
295920.000_1294	5057355.756	406141.377	120.668
295925.000_1294	5057355.736	406141.372	120.647
295930.000_1294	5057355.734	406141.370	120.645
295935.000_1294	5057355.735	406141.370	120.645
295940.000_1294	5057355.743	406141.369	120.655
295945.000_1294	5057355.744	406141.366	120.661
295950.000_1294	5057355.753	406141.372	120.665
295955.000_1294	5057355.729	406141.363	120.637
295960.000_1294	5057355.723	406141.363	120.630
295965.000_1294	5057355.720	406141.360	120.624
295970.000_1294	5057355.717	406141.358	120.623
295975.000_1294	5057355.721	406141.359	120.632
295980.000_1294	5057355.714	406141.356	120.625
295985.000_1294	5057355.709	406141.358	120.616
295990.000_1294	5057355.703	406141.338	120.743
295995.000_1294	5057360.529	406140.976	120.857
296000.000_1294	5057363.133	406140.947	120.728
296005.000_1294	5057362.823	406141.511	120.747
296010.000_1294	5057361.124	406142.904	120.706
296015.000_1294	5057359.801	406147.529	121.358
296020.000_1294	5057356.479	406149.266	122.287
296025.000_1294	5057352.806	406149.827	123.657
296030.000_1294	5057349.623	406150.817	124.298
296035.000_1294	5057348.393	406149.489	124.151
296040.000_1294	5057348.228	406149.610	124.037
296045.000_1294	5057348.317	406149.696	124.126
296050.000_1294	5057348.266	406149.625	124.105
296055.000_1294	5057348.262	406149.623	124.096

From : Geographic[WGS84],World Geodetic System 1984[Molodensky],Meters
To : Universal Transverse Mercator[ED50-UTM33],European 1950 (Mean)[Molodensky],Meters,Meters

Name	Northing	Easting	Height
------	----------	---------	--------

Select 'To' Coordinate System

Coordinate System

Universal Transverse Mercator

Zone

35X
37X
ED50-UTM32
ED50-UTM33
GB-Fuso Est
GB-Fuso Ovest
North 1
North 10
North 11

OK

Cancel

Help

From : Geographic[WGS84],World Geodetic System 1984[Molodensky],Meters

To : Universal Transverse Mercator[UTM-WGS84(F33)],World Geodetic System 1984[Molodensky],Meters,Meters

Name	Northing	Easting	Height
295855.000_1294	5057175.705	2426073.721	115.828
295860.000_1294	5057175.694	2426073.720	115.811
295865.000_1294	5057175.690	2426073.720	115.807
295870.000_1294	5057175.704	2426073.723	115.822
295875.000_1294	5057175.703	2426073.722	115.822
295880.000_1294	5057175.717	2426073.724	115.842
295885.000_1294	5057175.718	2426073.725	115.844
295890.000_1294	5057175.728	2426073.728	115.852
295895.000_1294	5057175.729	2426073.728	115.856
295900.000_1294	5057175.731	2426073.730	115.857
295905.000_1294	5057175.735	2426073.730	115.856
295910.000_1294	5057175.720	2426073.724	115.839
295915.000_1294	5057175.717	2426073.723	115.842
295920.000_1294	5057175.732	2426073.729	115.854
295925.000_1294	5057175.712	2426073.724	115.832
295930.000_1294	5057175.710	2426073.722	115.831
295935.000_1294	5057175.711	2426073.722	115.831
295940.000_1294	5057175.720	2426073.721	115.841
295945.000_1294	5057175.720	2426073.718	115.847
295950.000_1294	5057175.729	2426073.724	115.851
295955.000_1294	5057175.705	2426073.715	115.823
295960.000_1294	5057175.700	2426073.715	115.815
295965.000_1294	5057175.696	2426073.712	115.810
295970.000_1294	5057175.693	2426073.709	115.809
295975.000_1294	5057175.697	2426073.711	115.818
295980.000_1294	5057175.690	2426073.708	115.811
295985.000_1294	5057175.685	2426073.710	115.802
295990.000_1294	5057175.679	2426073.690	115.929
295995.000_1294	5057180.506	2426073.328	116.043
296000.000_1294	5057183.110	2426073.299	115.914
296005.000_1294	5057182.800	2426073.862	115.933
296010.000_1294	5057181.100	2426075.255	115.892
296015.000_1294	5057179.777	2426079.881	116.544
296020.000_1294	5057176.455	2426081.618	117.473
296025.000_1294	5057172.782	2426082.179	118.842
296030.000_1294	5057169.599	2426083.169	119.484
296035.000_1294	5057168.369	2426081.841	119.337
296040.000_1294	5057168.205	2426081.962	119.223
296045.000_1294	5057168.293	2426082.047	119.312
296050.000_1294	5057168.243	2426081.976	119.291
296055.000_1294	5057168.238	2426081.974	119.282

From : Geographic[WGS84],World Geodetic System 1984[Molodensky],Meters

To : Universal Transverse Mercator[GB-Fuso Est],Rome 1940 (Sardinia)[Molodensky],Meters,Meters

Name	Normal	Height
------	--------	--------

Editor...

Load Input Format...

Load Output Format...

Edit Input Format...

Edit Output Format...

Settings...


From : Geographic[WGS84],World Geodetic System 1984[Molodensky],Meters
To : Universal Transverse Mercator[ED50-UTM33],European 1950 (Mean)[Molodensky],Meters,Meters



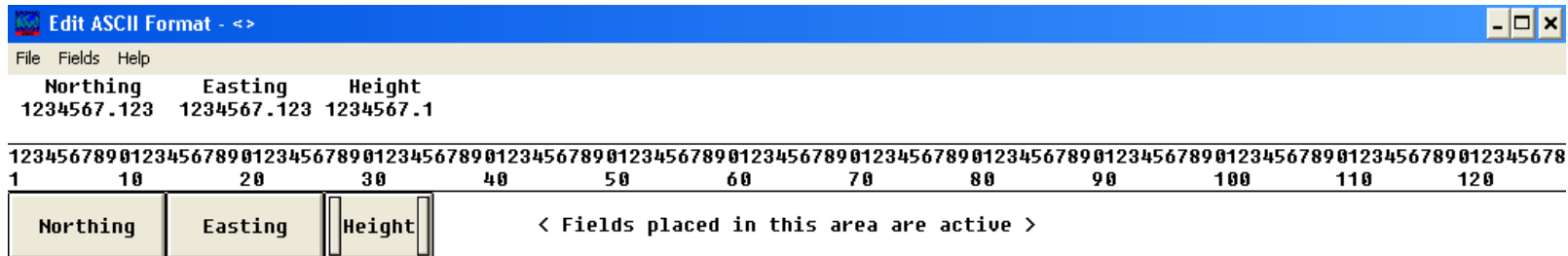
< Fields placed in this area are active >

< Fields placed in this area are inactive >

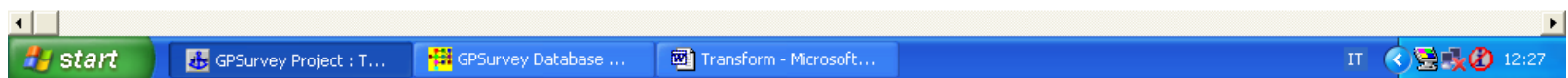


 Transform - Microsoft...

IT 12:26



< Fields placed in this area are inactive >



Name	Northing	Easting	Height
------	----------	---------	--------

Load Input ASCII Format

File name:

GEOG.FMT

Folders:

c:\gpsurvey\data

OK

Cancel

Network...

CART.FMT
GEOG.FMT
GEOG2.FMT
GEOG3.FMT
GEOG4.FMT
GEOG-NEW.FMT
GEOGTOP.FMT
PLAN.FMT

c:\
GPSURVEY
DATA

List files of type:

Format files (*.fmt)

Drives:

c:

From : Geographic[WGS84],World Geodetic System 1984[Molodensky],Meters
To : Universal Transverse Mercator[ED50-UTM33],European 1950 (Mean)[Molodensky],Meters,Meters

Name	Northing	Easting	Height
------	----------	---------	--------

Load Output ASCII Format ? X

File name:

Folders: c:\gpsurvey\data

OK

Cancel

Network...

☐ c:\

☐ GPSURVEY

☐ DATA

List files of type:

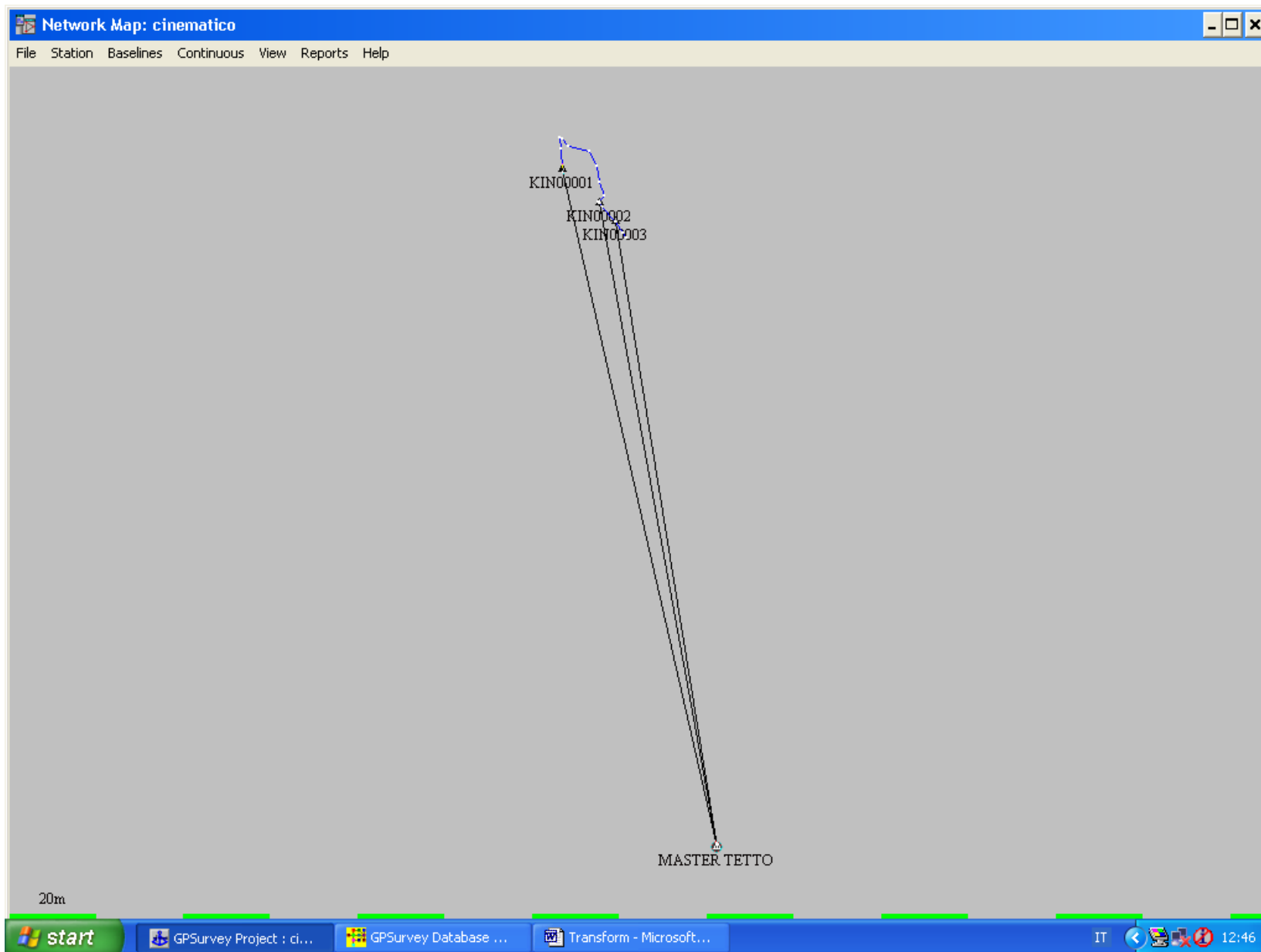
Drives:

CART.FMT
GEOG.FMT
GEOG2.FMT
GEOG3.FMT
GEOG4.FMT
GEOG-NEW.FMT
GEOGTOP.FMT
PLAN.FMT

From : Geographic[WGS84],World Geodetic System 1984[Molodensky],Meters
To : Universal Transverse Mercator[ED50-UTM33],European 1950 (Mean)[Molodensky],Meters,Meters

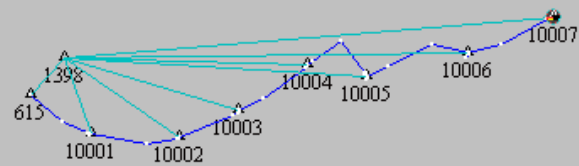
Name	Latitude	Longitude	Height

< Fields placed in this area are inactive >



Network Map: Esercitazione_Ottobre2005

File Station Baselines Continuous View Reports Help



10m



GPSurvey Project : E...

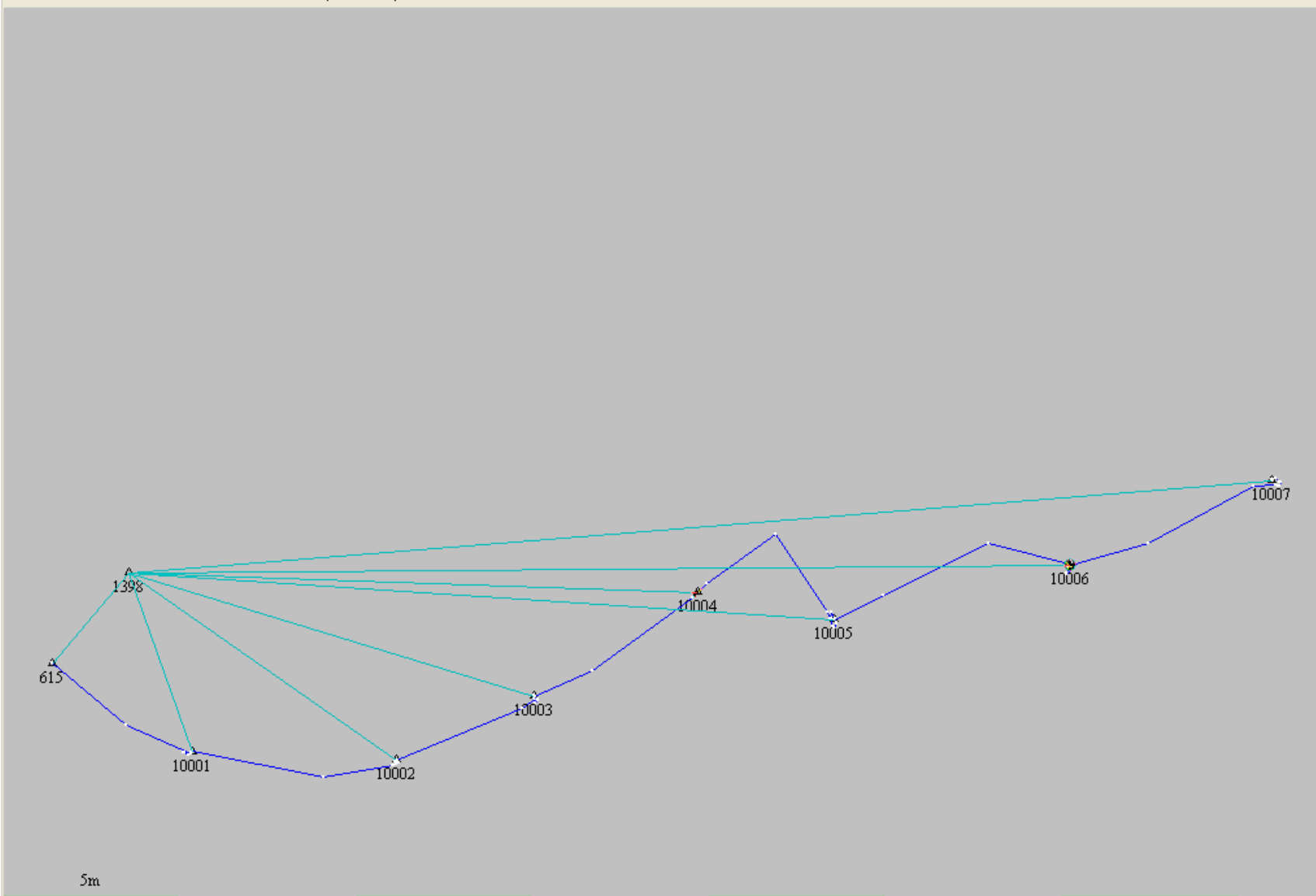
GPSurvey Database ...

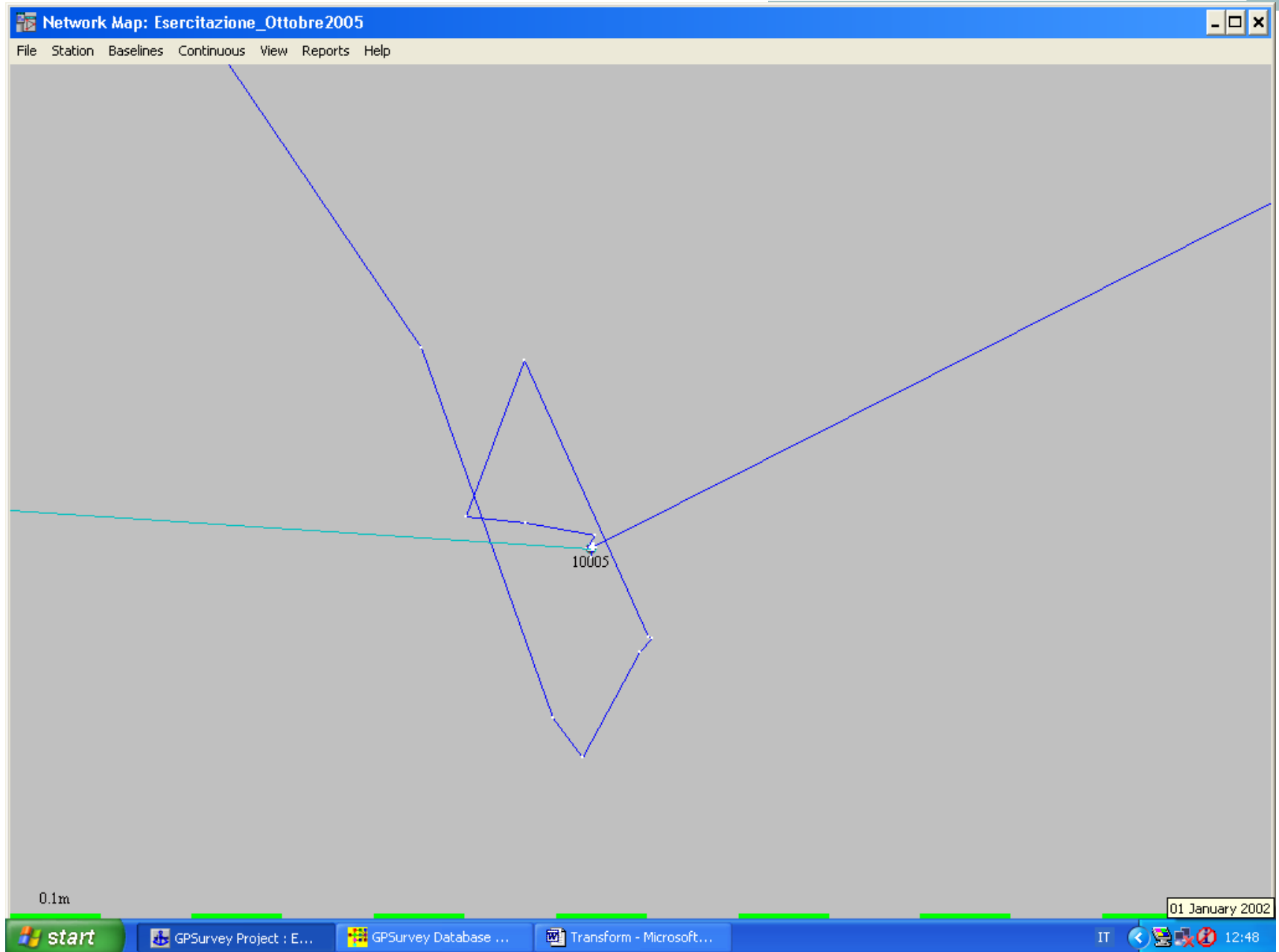
Transform - Microsoft...

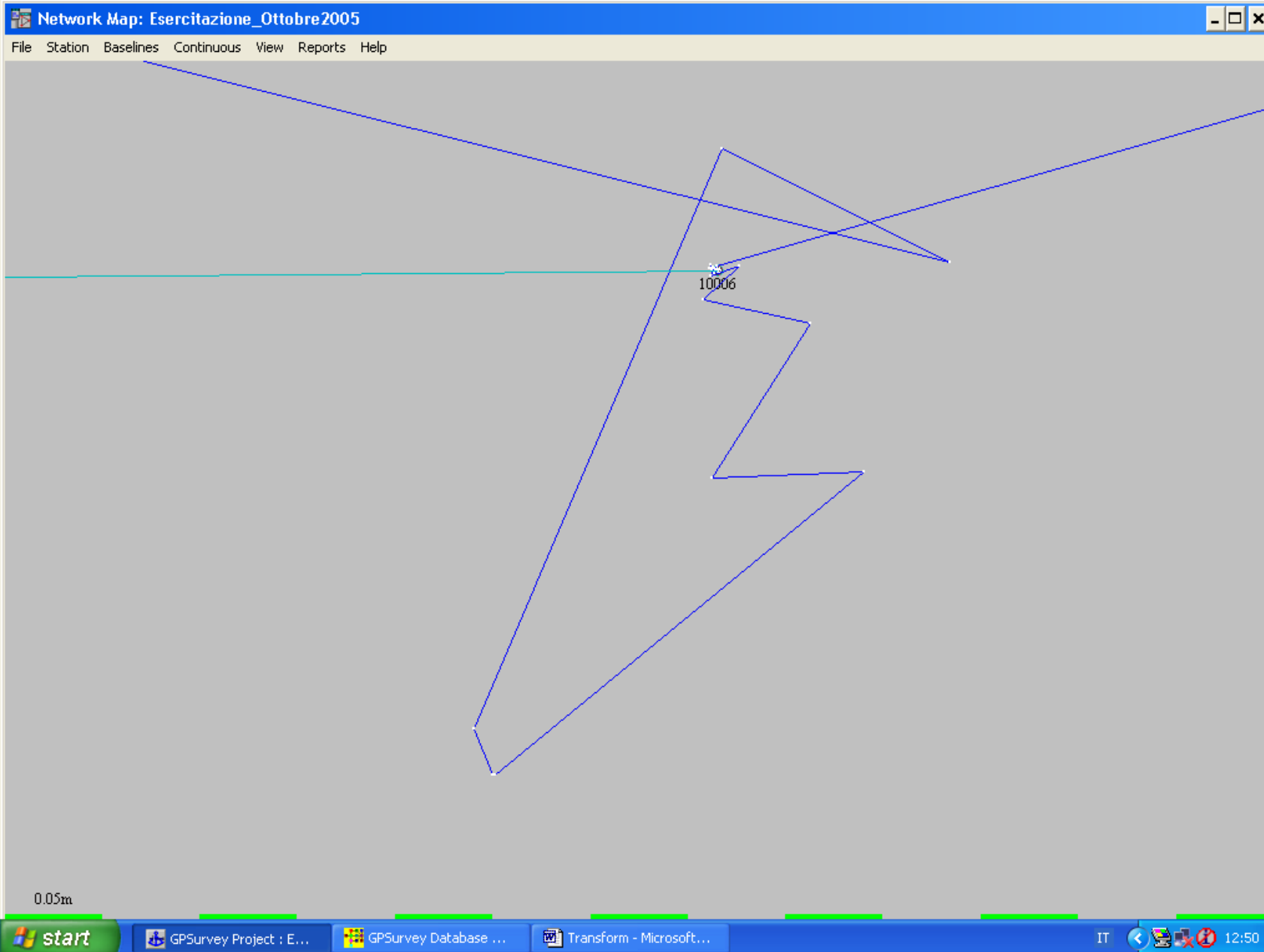
IT

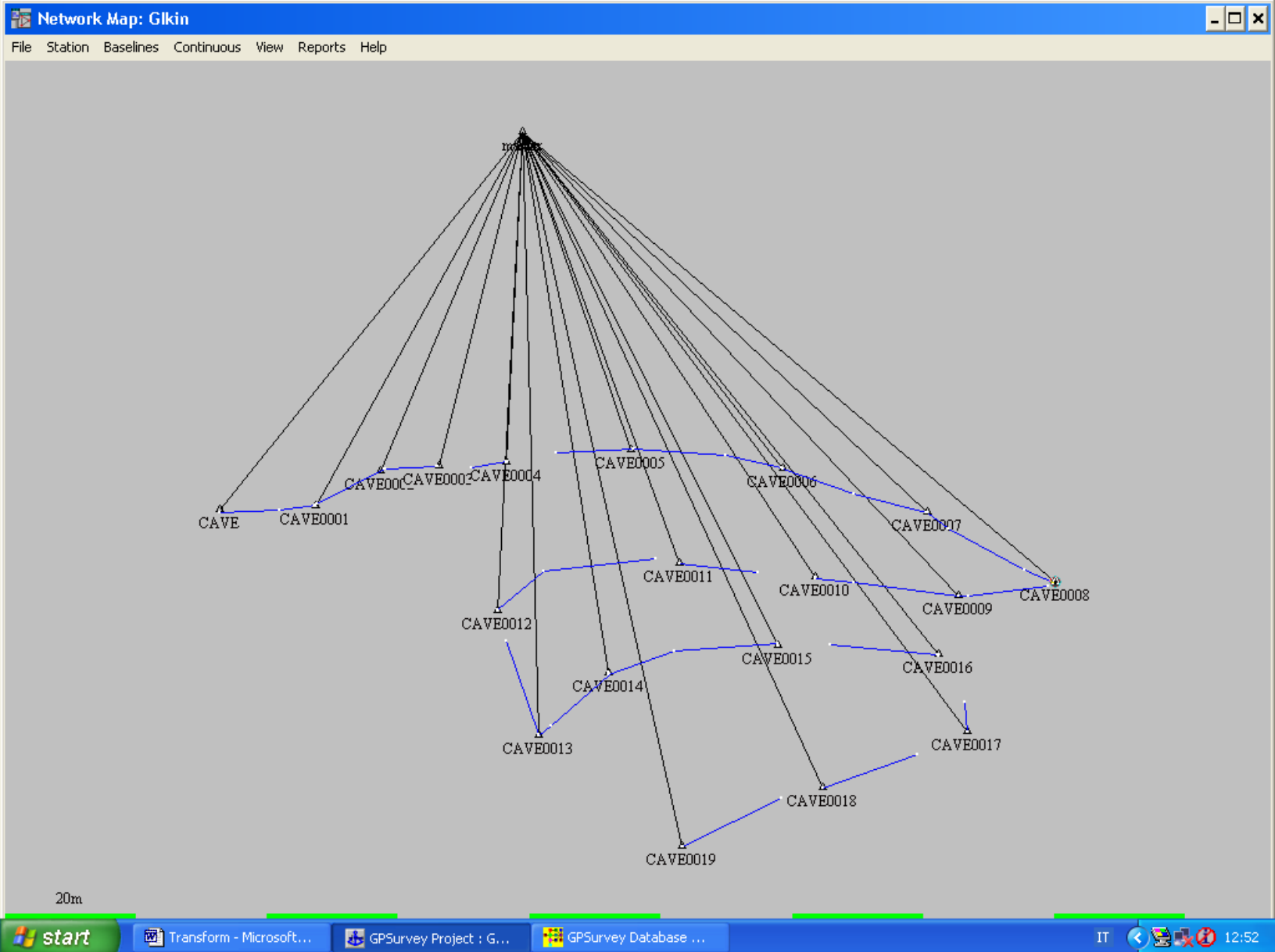


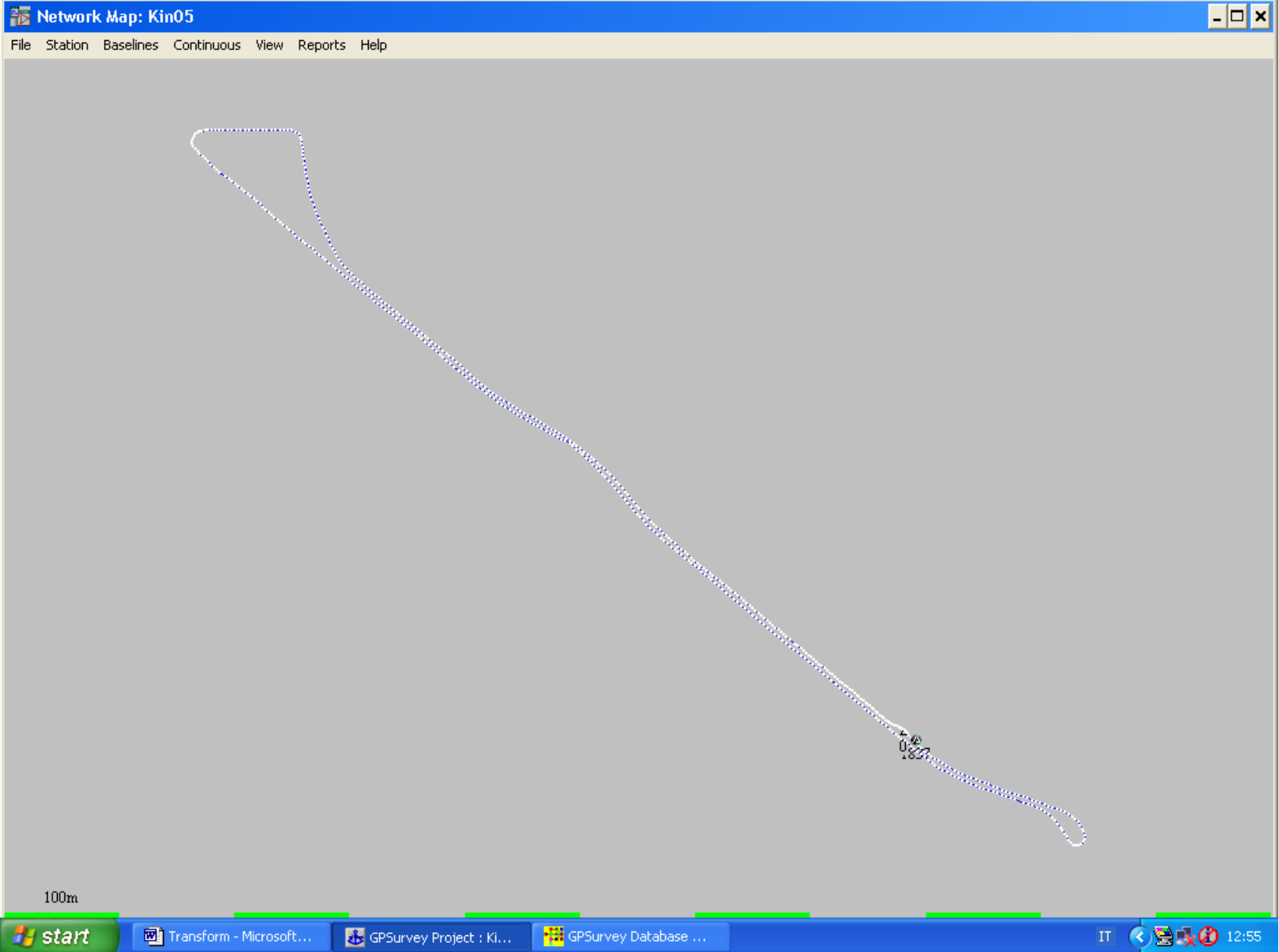
12:48

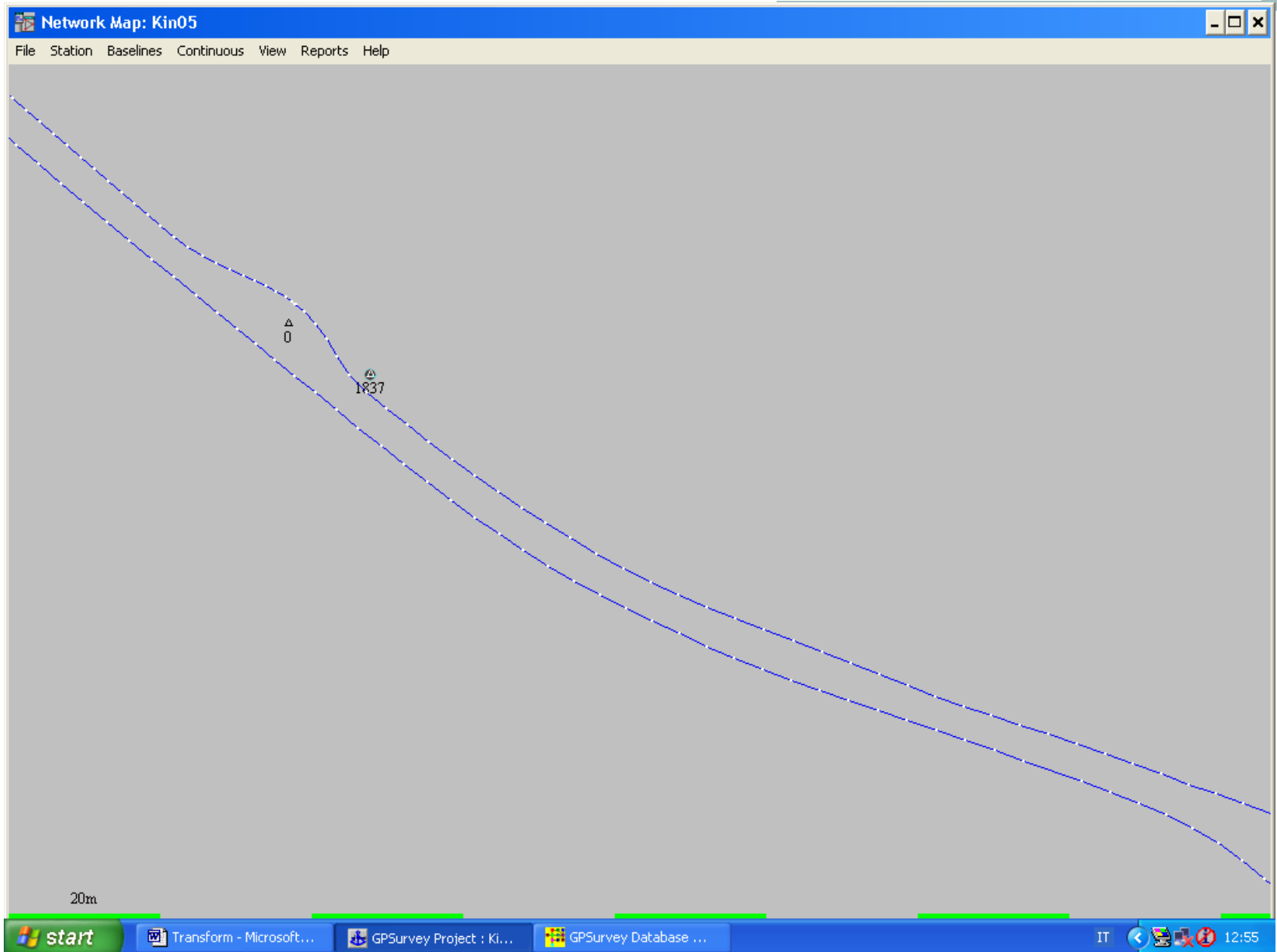


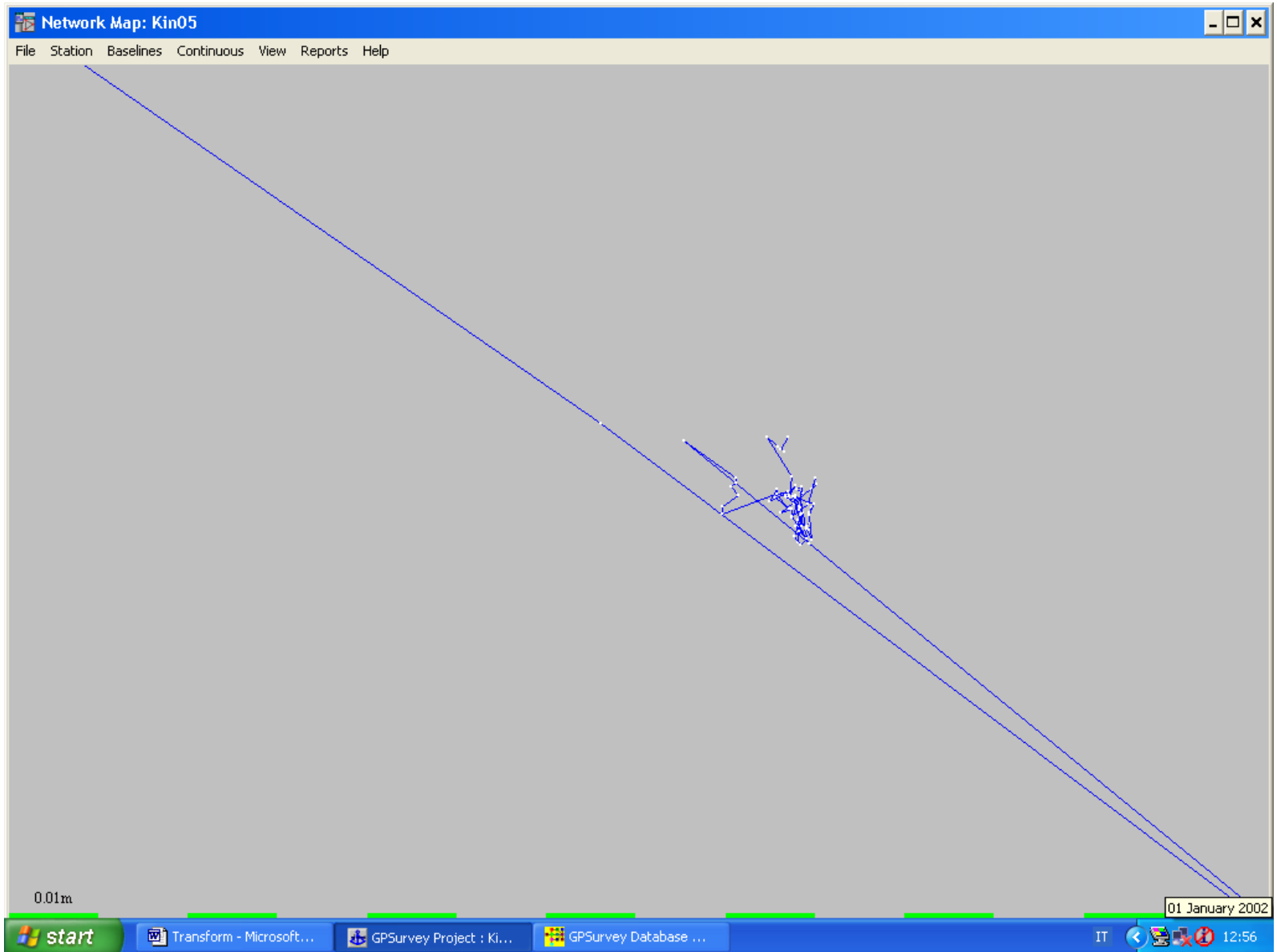


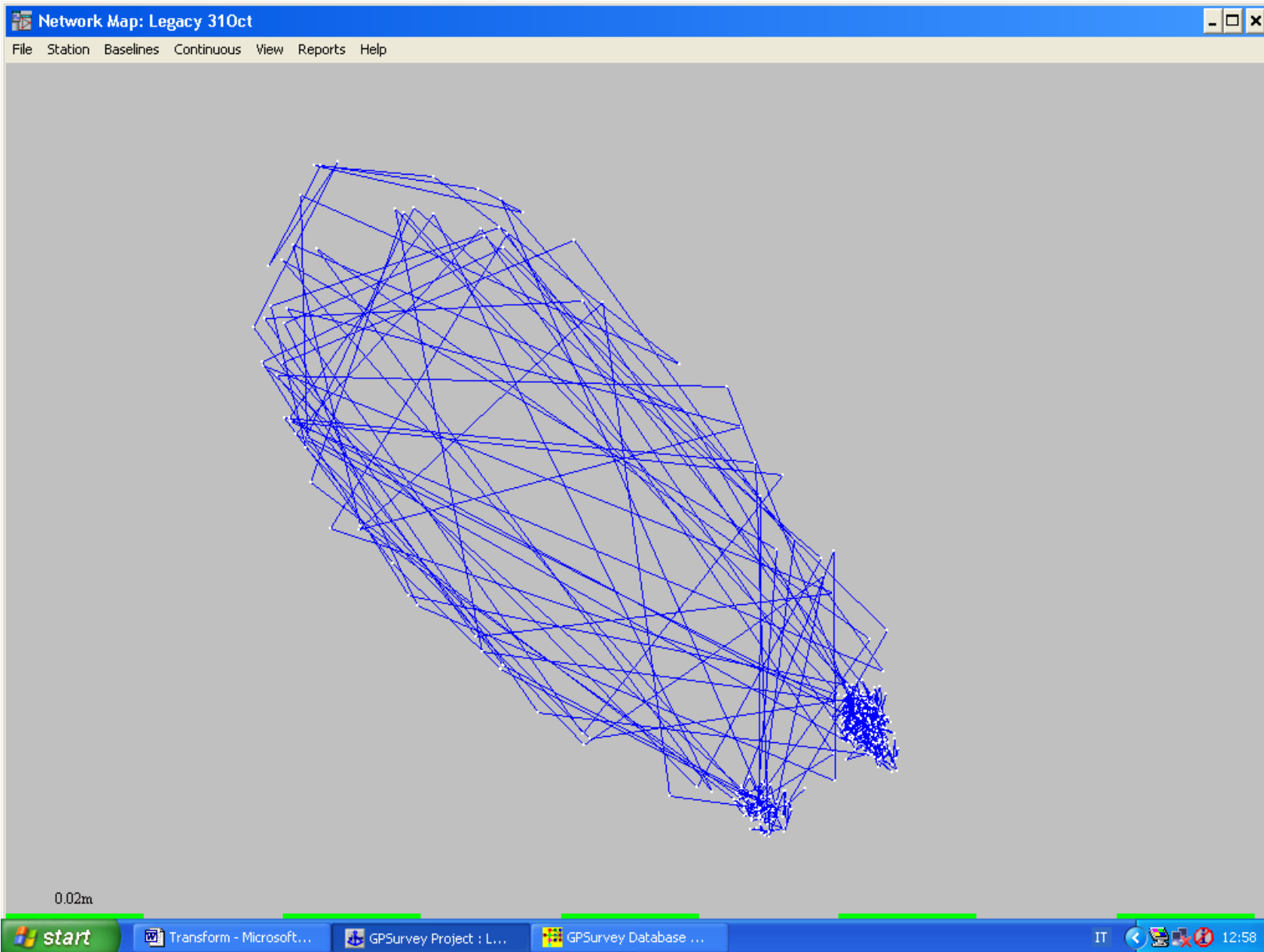


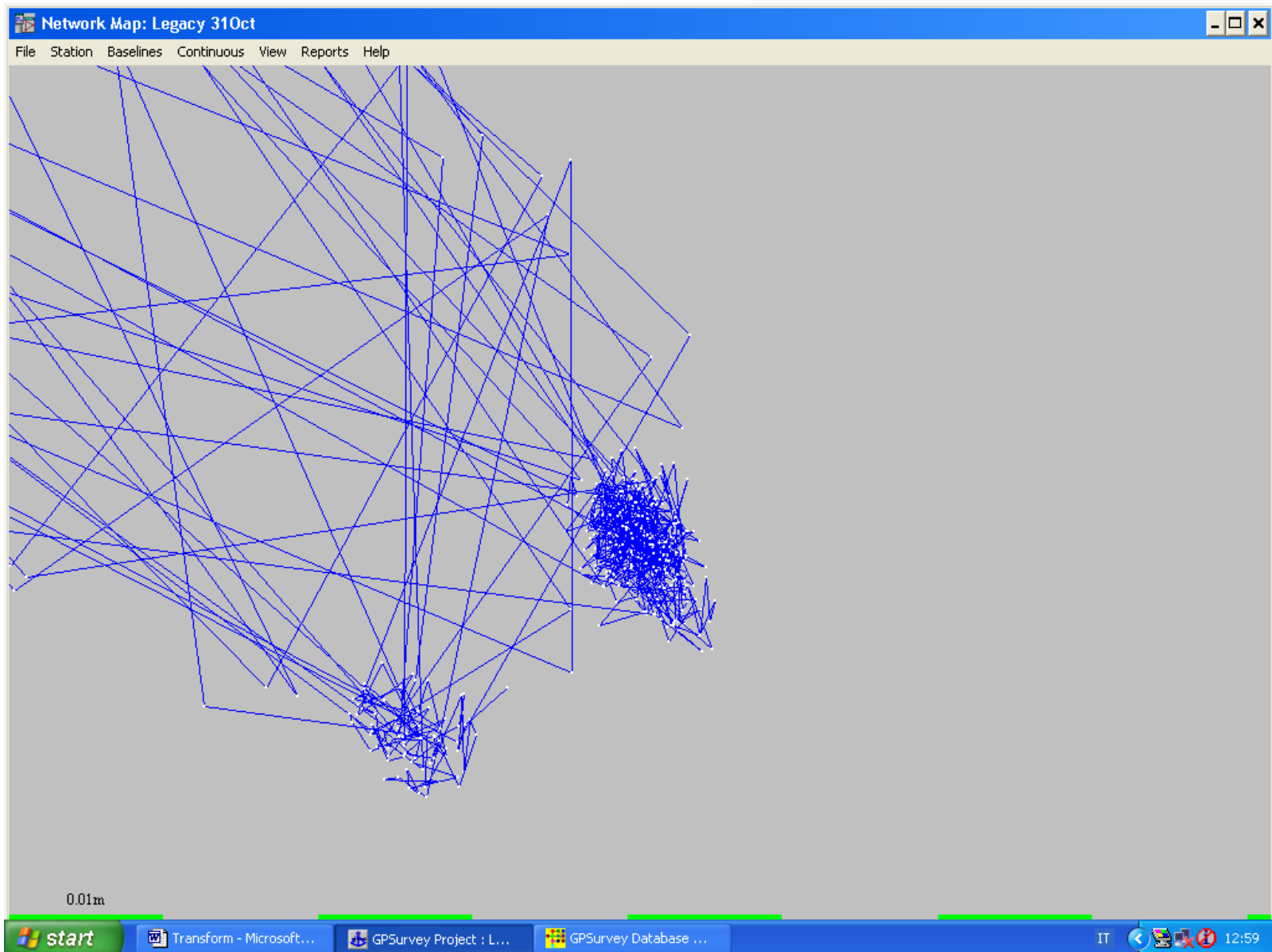


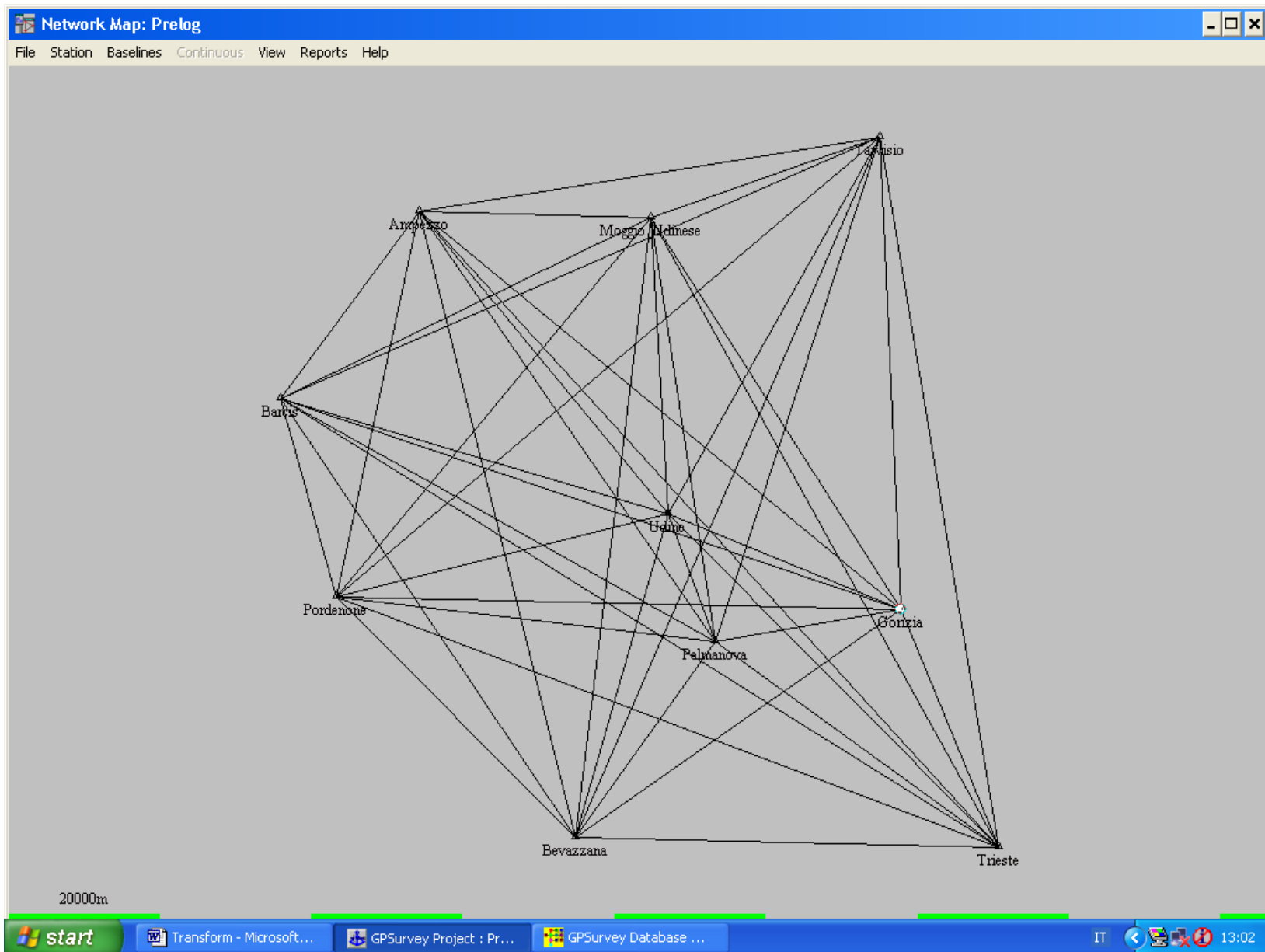












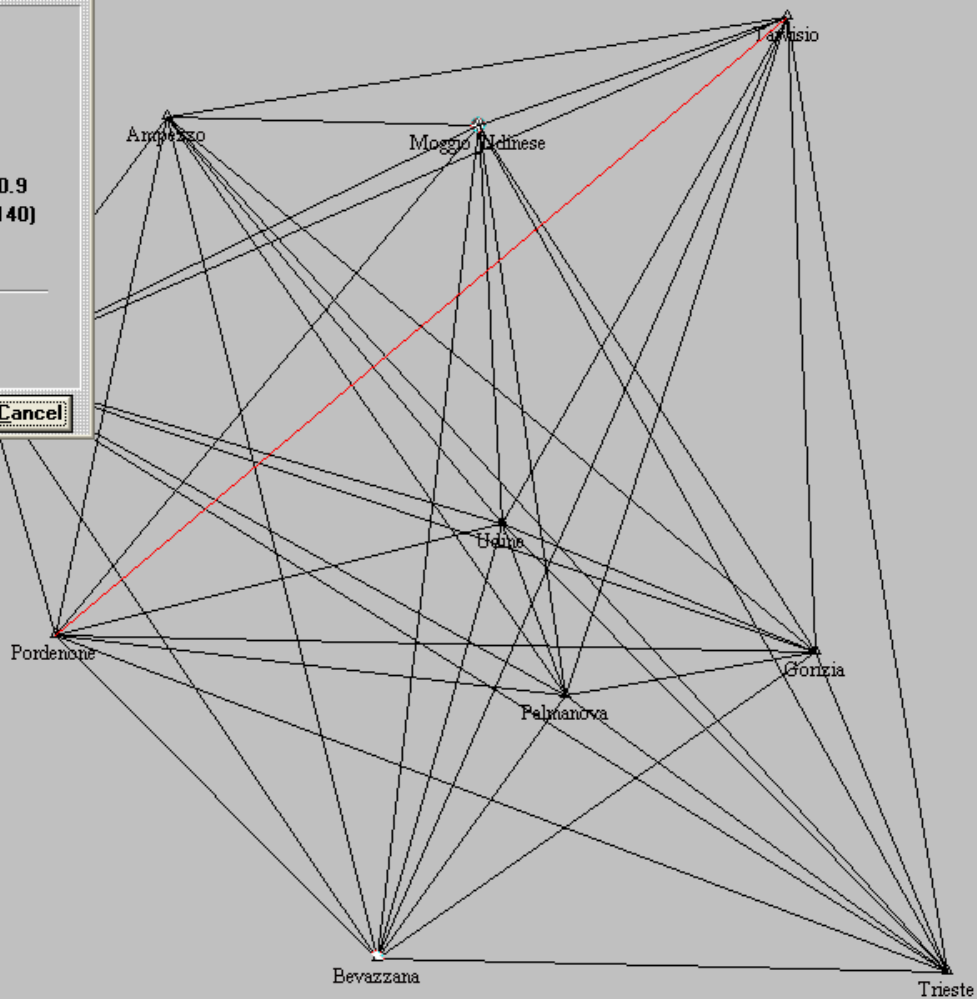
Baseline (ID 2476)

1 of 1
From: Pordenone
To: Tarvisio
Dist (m): 94035.3390
Azimuth: 49°29'47.4"
Delta Ht: 679.4601
Ratio: 13.4 Variance: 0.9
Start Time: 20/05/2010 0:00 (140)
Duration: 24:00
Iono free fixed

delta N (m): 61075.4262
delta E (m): 71501.3085
delta U (m): -13.4232

More..

Cancel



20000m

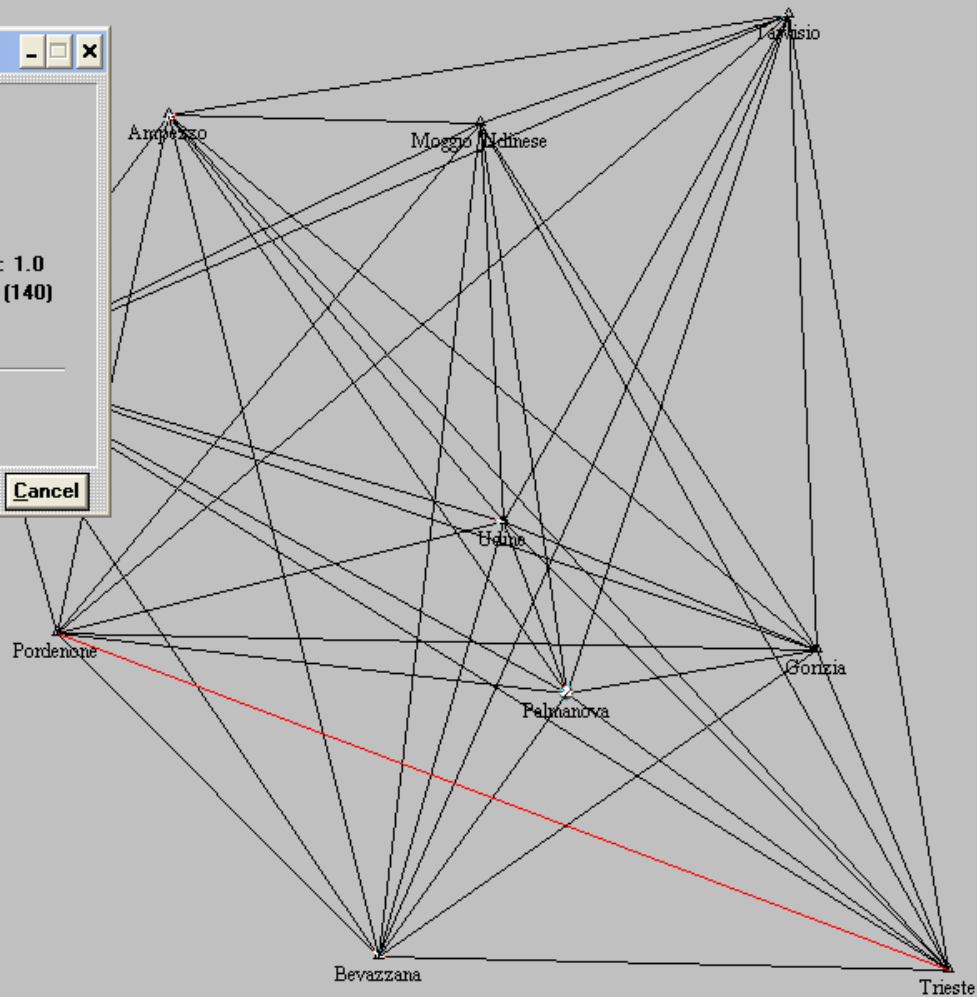
Baseline (ID 2432)

1 of 1

From: Trieste
 To: Pordenone
 Dist (m) : 93553.0409
 Azimuth: 291°00'17.7"
 Delta Ht: -79.8426
 Ratio: 17.7 Variance: 1.0
 Start Time: 20/05/2010 0:00 (140)
 Duration: 24:00
 Iono free fixed

delta N (m): 33532.7864
 delta E (m): -87333.4897
 delta U (m): -765.0339

More.. Cancel



20000m

