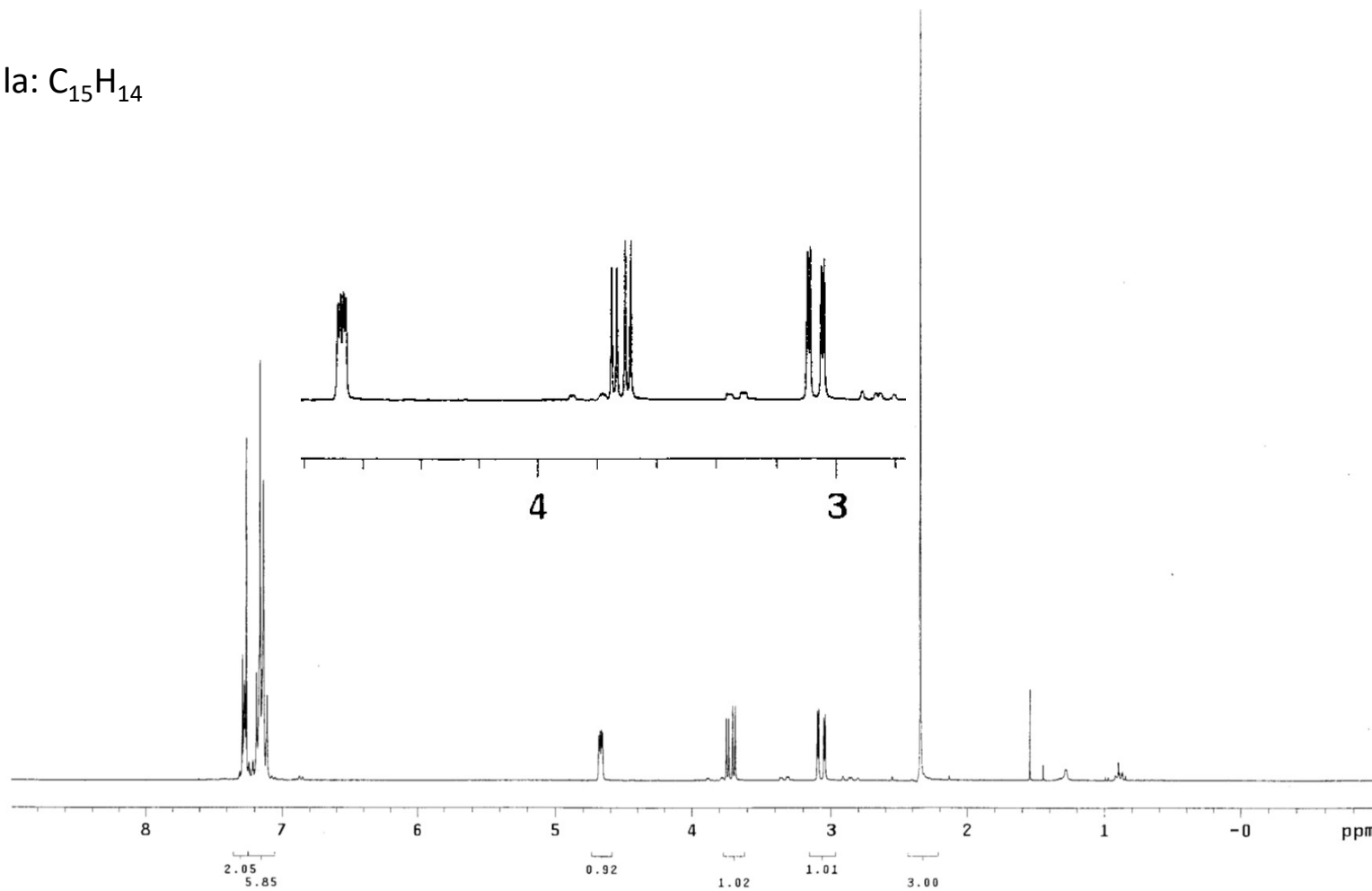


Esercizio J

Chemical Formula: $C_{15}H_{14}$



1H NMR (300 MHz, $CDCl_3$) δ 7.29-7.22 (m, 2H), 7.20-7.08 (m, 6H), 4.67 (dd, $J = 5.7, 2.7$ Hz, 1H), 3.72 (dd, $J = 13.8, 5.4$ Hz, 1H), 3.06 (dd, $J = 13.8, 2.4$ Hz, 1H), 2.34 (s, 3H).

Esercizio J

^{13}C NMR (75.5 MHz, CDCl_3) δ 148.2, 144.4, 140.1, 136.2, 129.3, 127.8, 127.3, 127.1, 123.5, 122.9, 47.4, 40.3, 21.3.

Esercizio J

Soluzione a richiesta