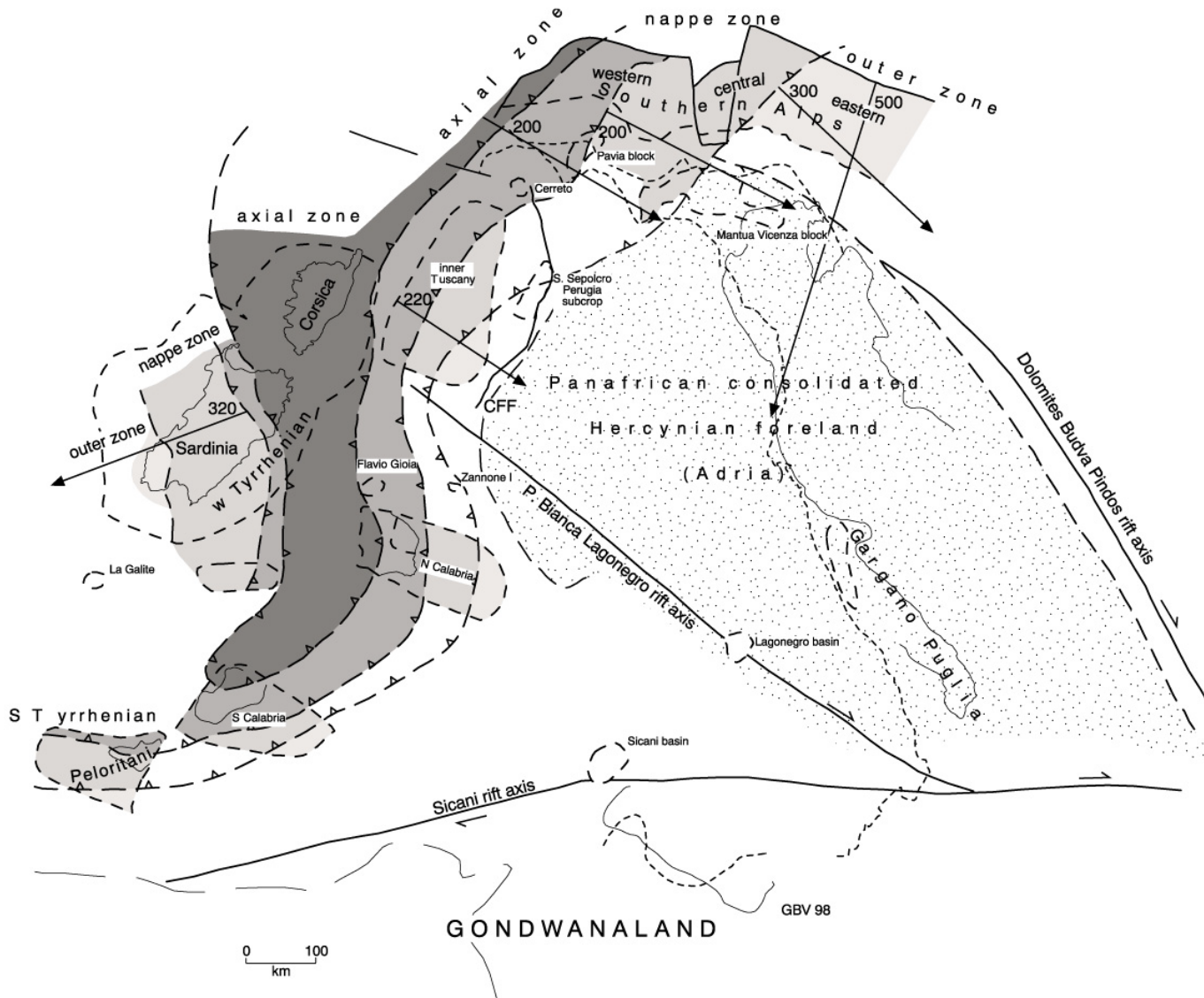


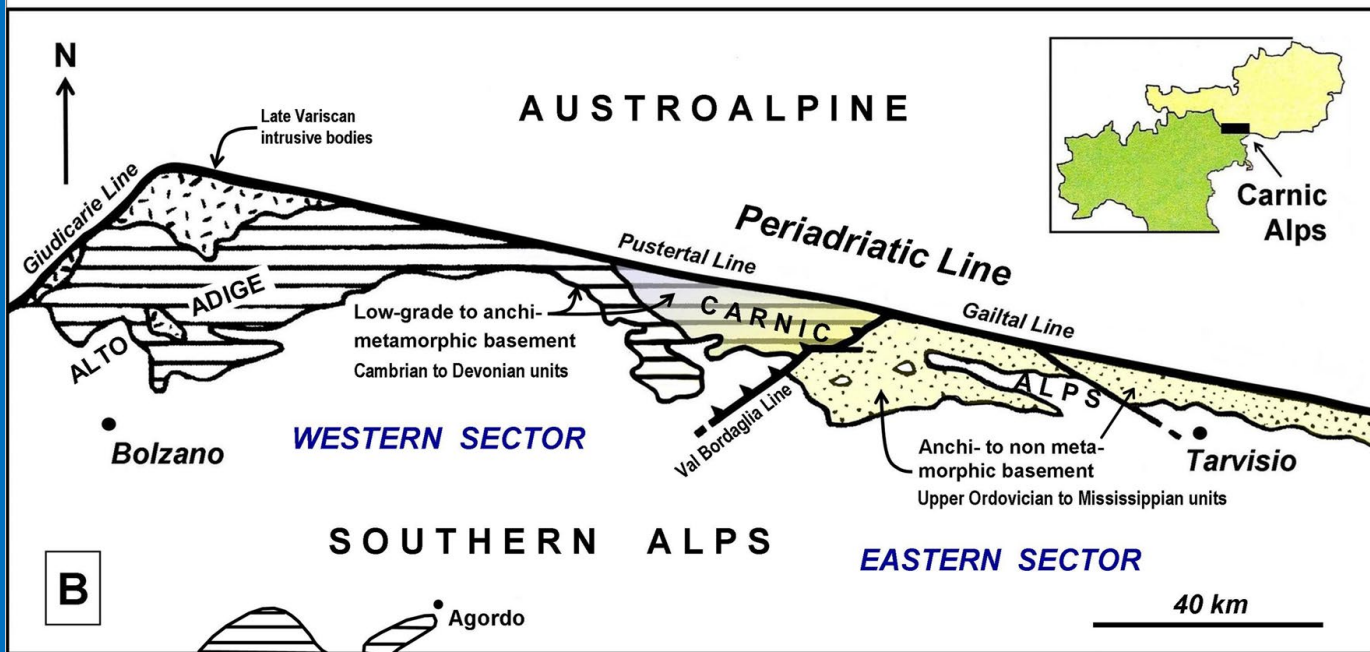
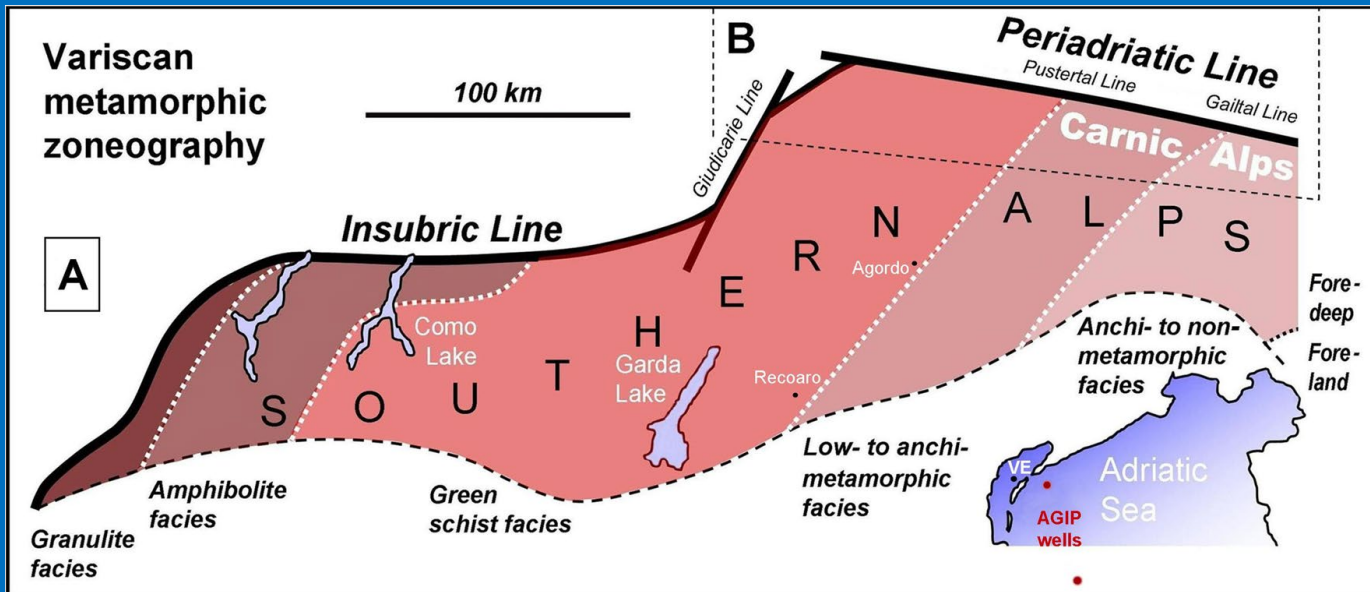
Distribuzione del “basamento ercinico” e delle sue coperture paleozoiche pre-alpine

Figure 10.8 Simplified map of Proterozoic to Palaeozoic basement and cover outcrops and shallow subcrops of the Apennines, surrounding seas, Sardinia-Corsica, and Southern Alps. Arrows and numbers (km) represent shortening (outward orientation) and extension (inward orientation) displacement vectors used for palinspastic restoration (Fig. 10.10) (PE.NI, Mts Peloritani).



Da Vai, 2001

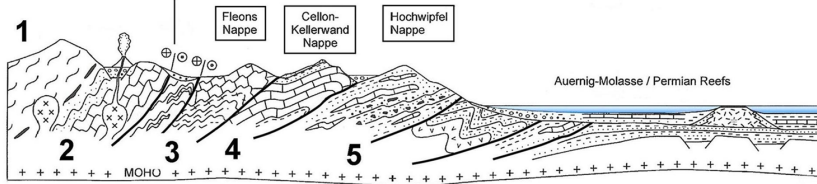
Figure 10.11 Map showing early to mid-Triassic restoration of the tectono-metamorphic zones of the Hercynian belt from the Southern Alps to the Apennines, Corsica, Sardinia, and Calabria areas. Arrows and numbers (km) represent shortening vectors used for constraining the Devonian/Carboniferous palinspastic map (Fig. 10.12). (CFF, Cervarola–Falterona thrust front).



N**S**

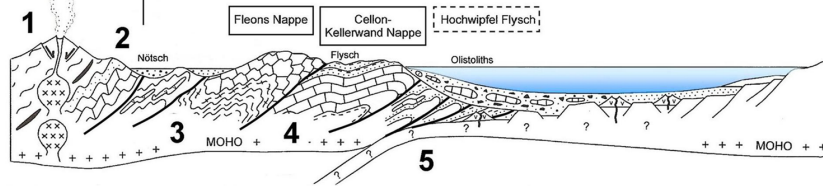
Future
 Periadriatic Line

PENNSYLVANIAN – EARLY PERMIAN

D

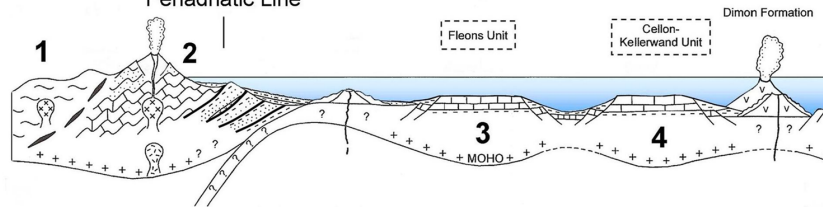
Future
 Periadriatic Line

WISEAN – BASHKIRIAN

C

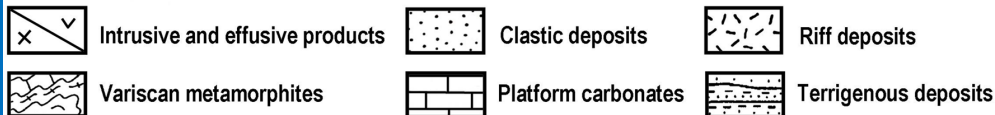
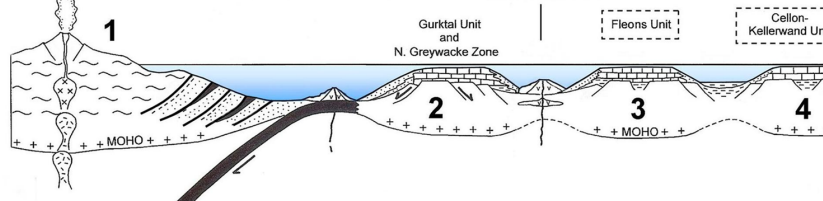
Future
 Periadriatic Line

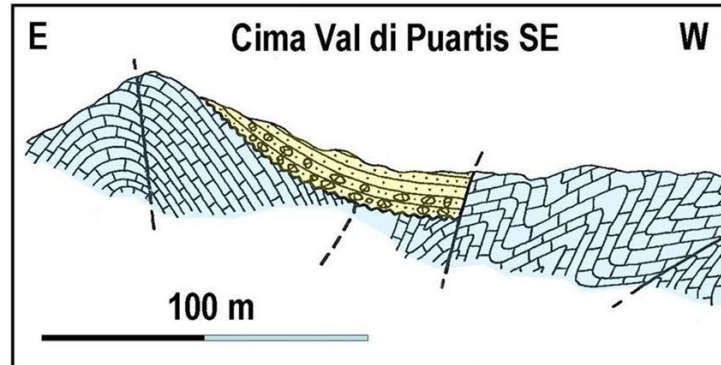
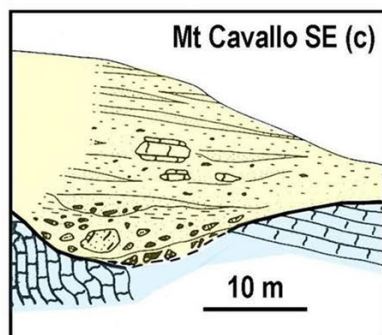
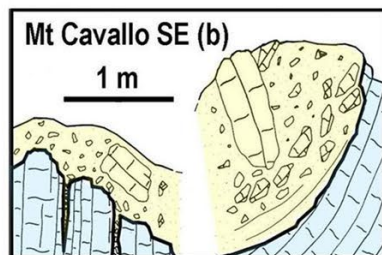
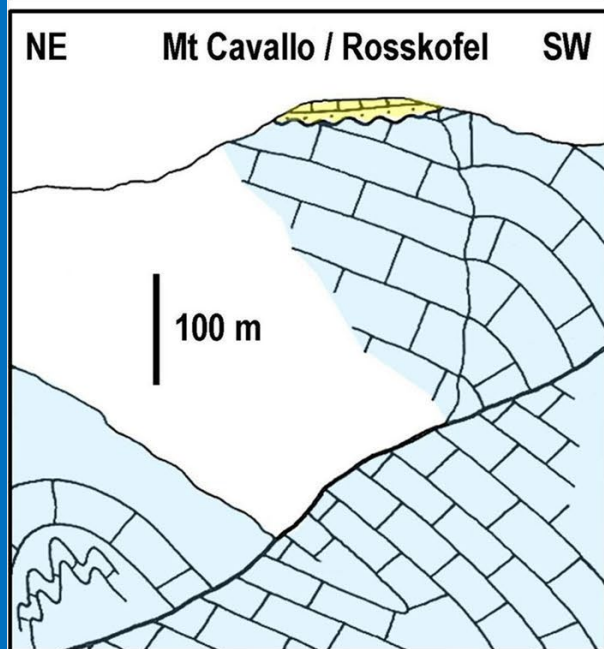
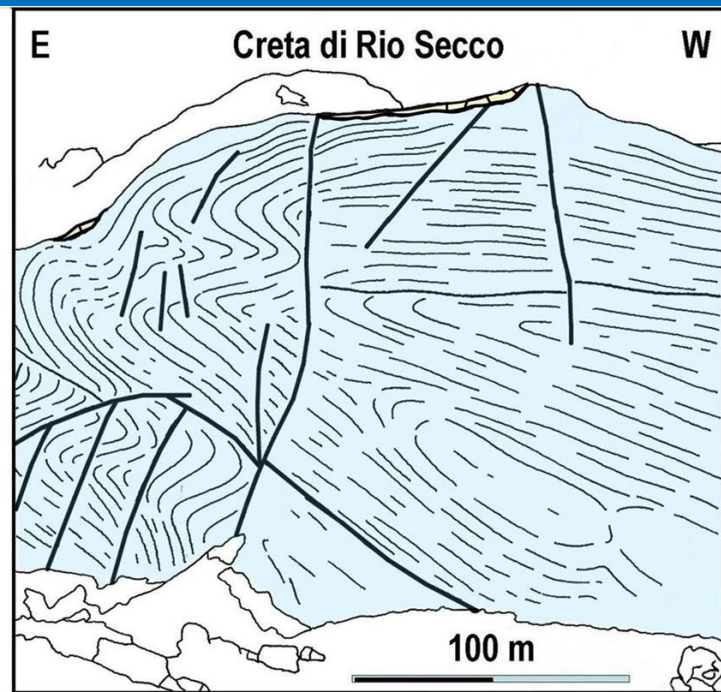
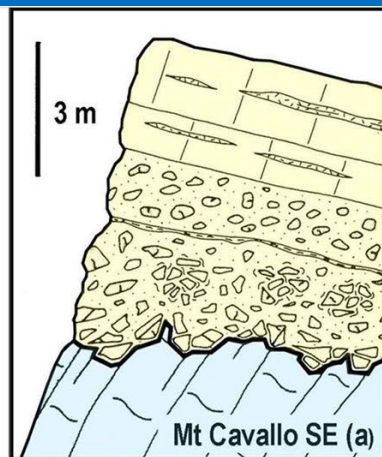
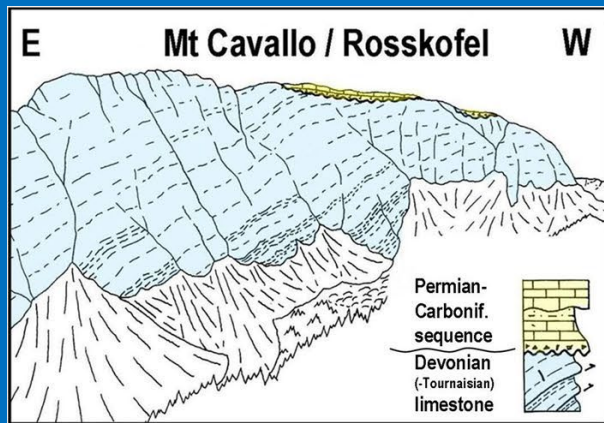
LATE DEVONIAN – MISSISSIPPIAN

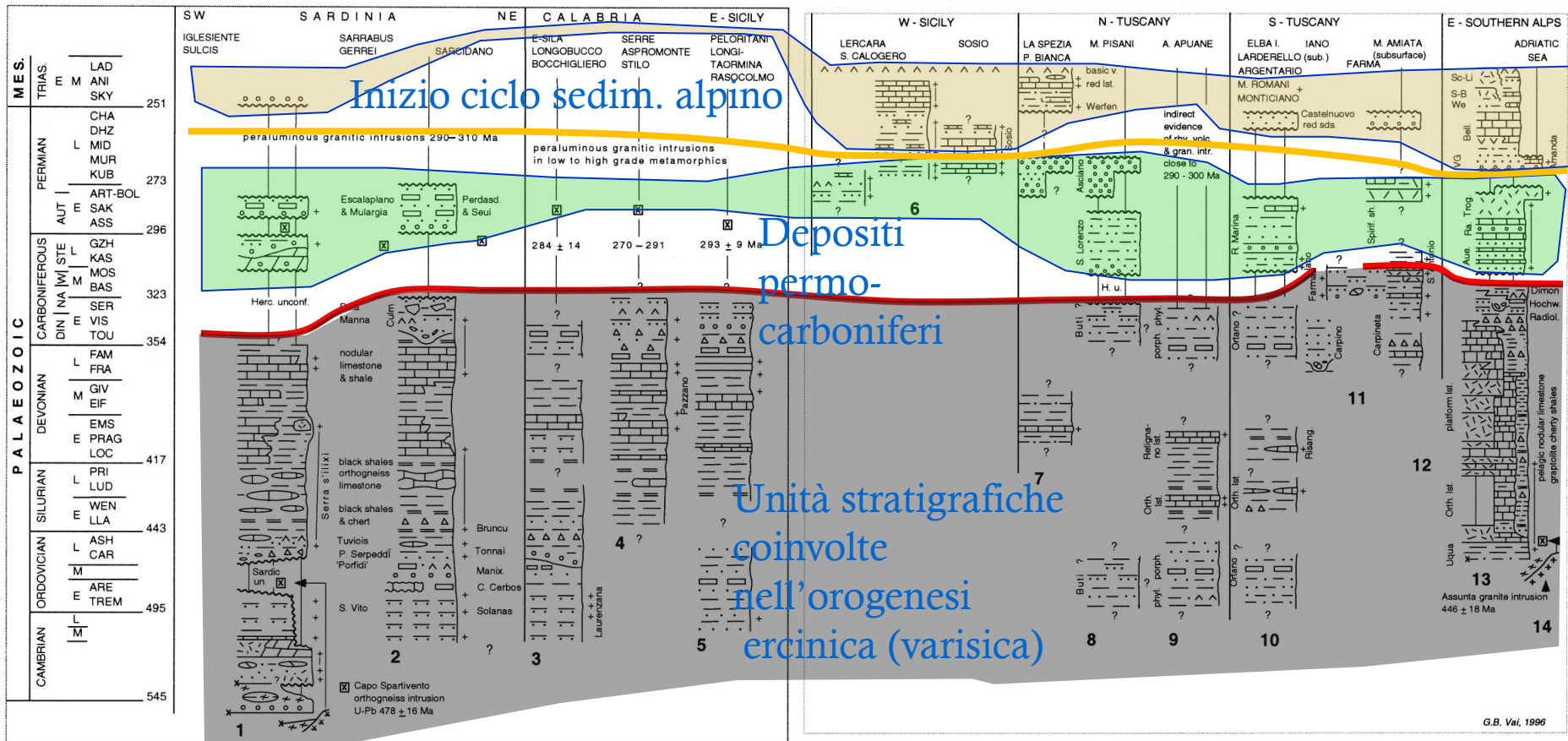
B

Austro-Alpine
 Crystalline Complex

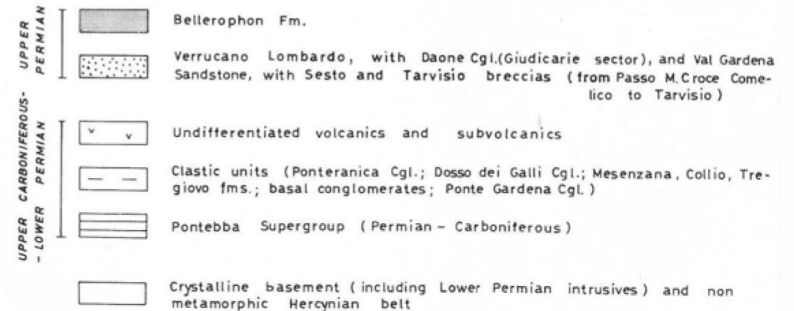
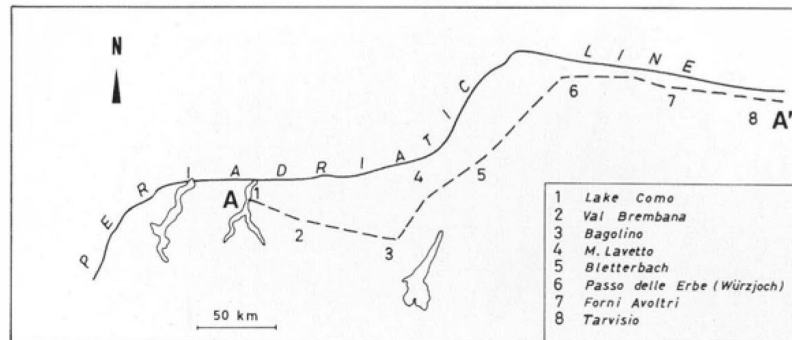
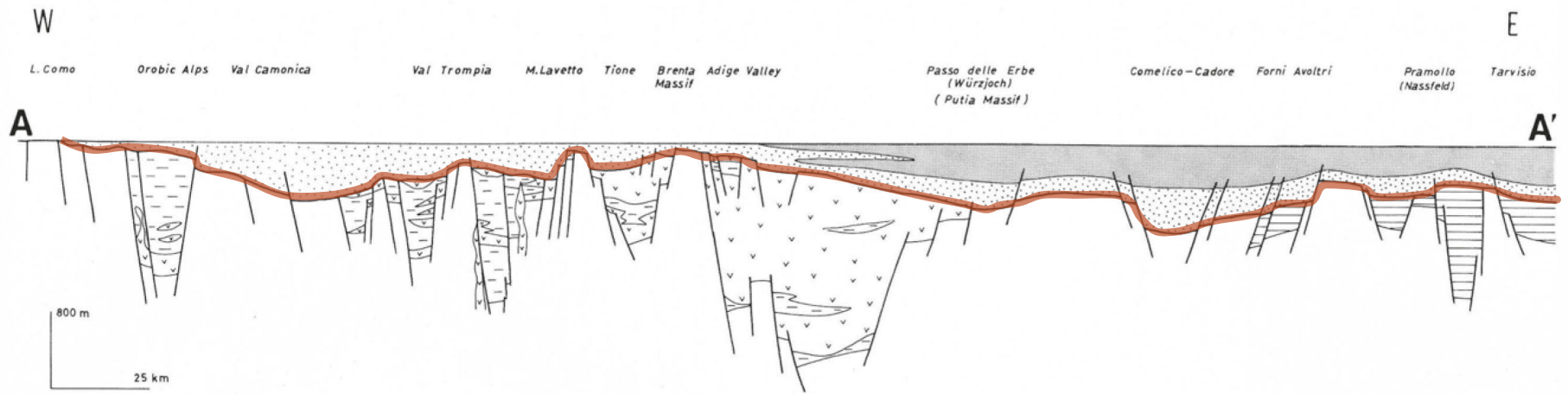
EARLY – MIDDLE DEVONIAN

A

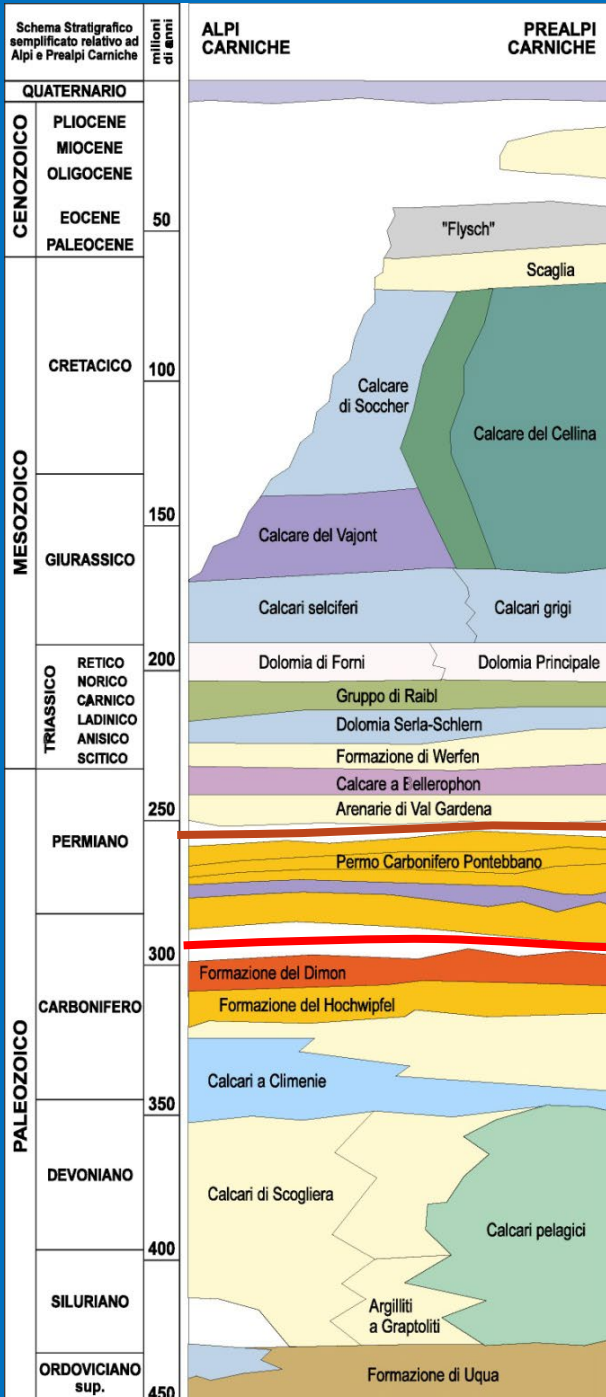




Da Vai, 2001



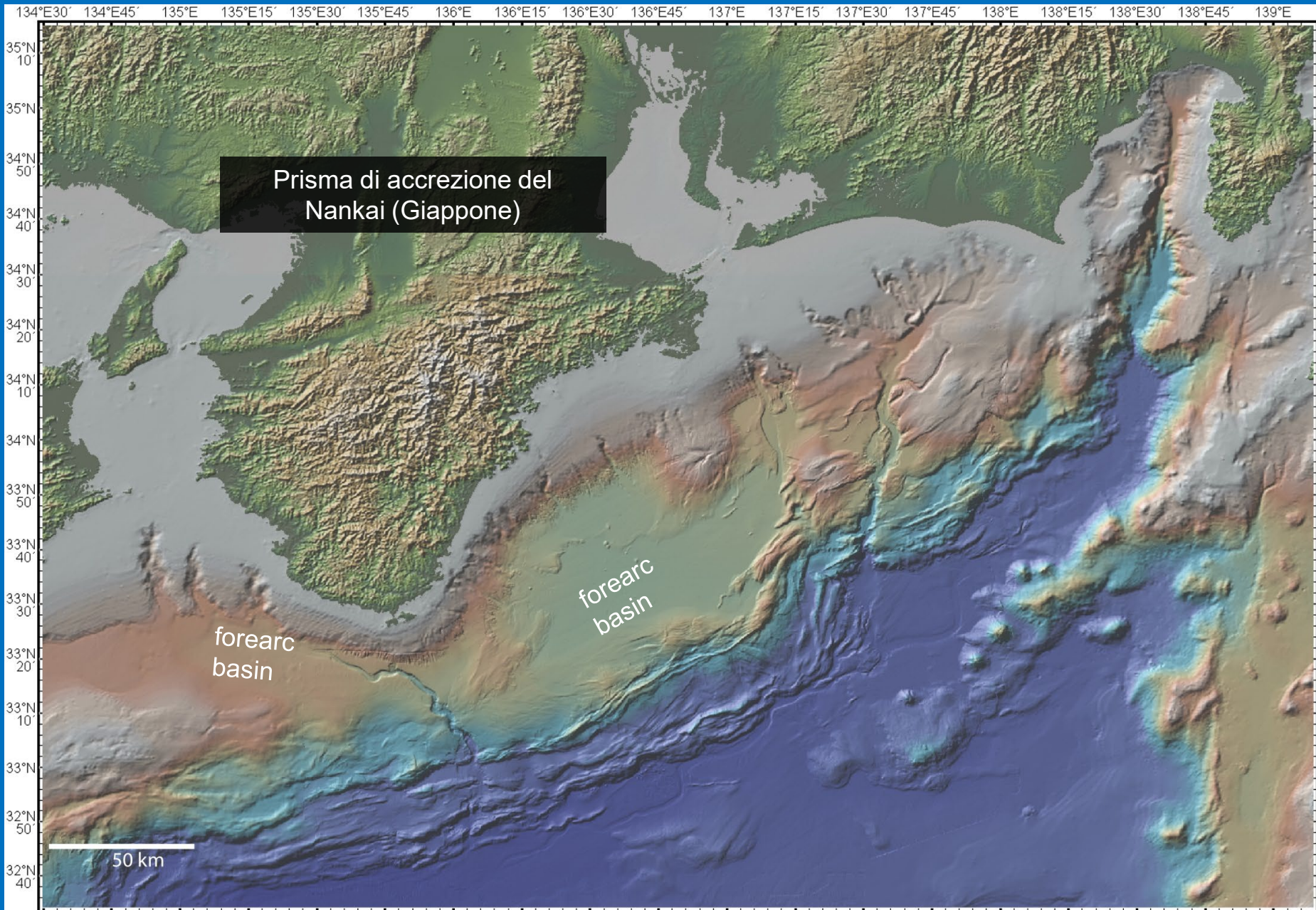
A cura di C. Neri, Quaderno Servizio Geologico d'Italia

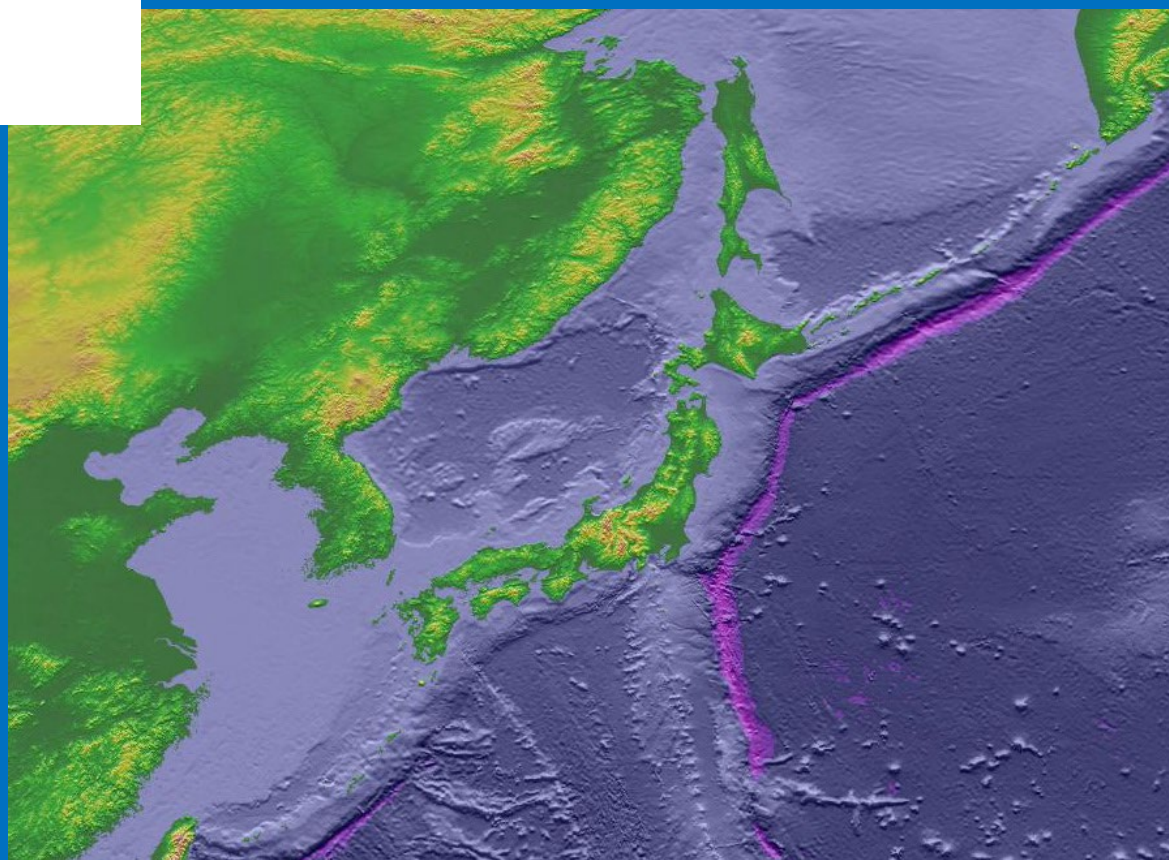
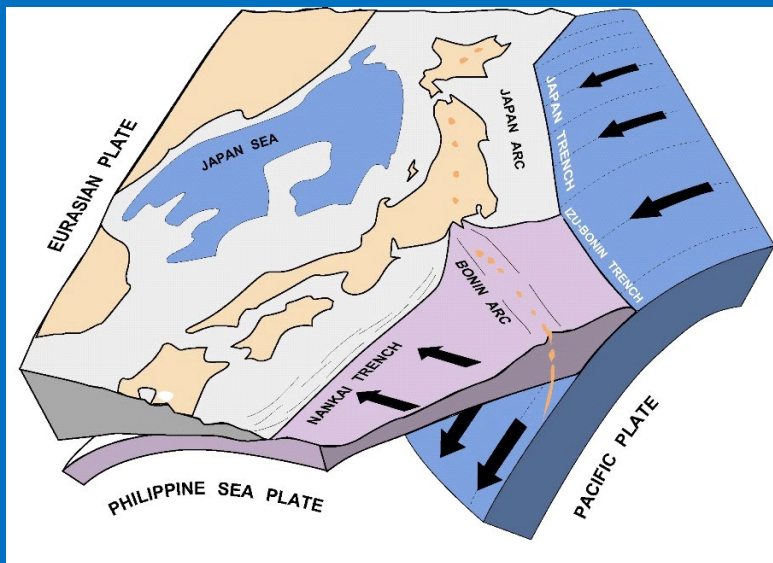


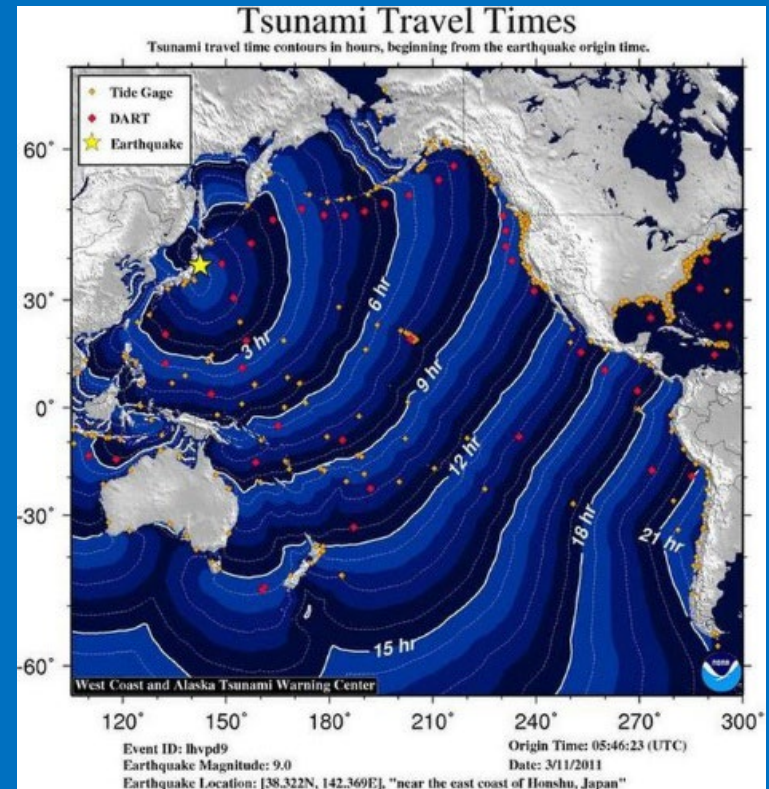
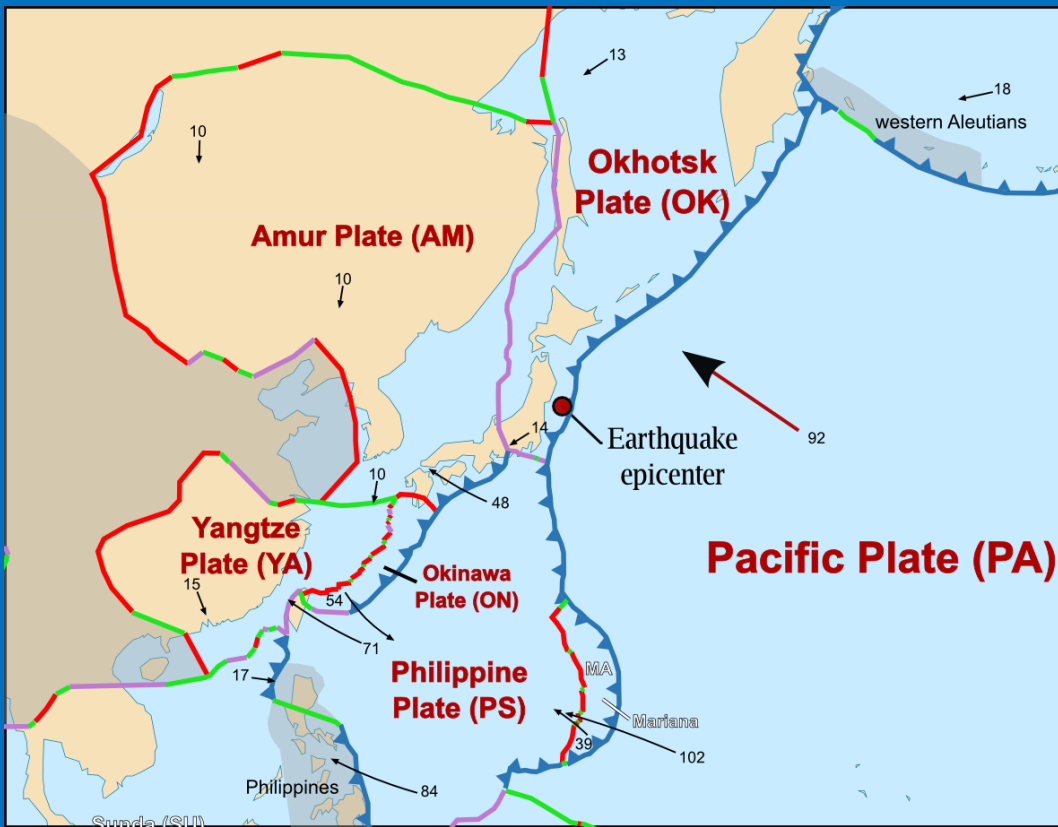
Successione ciclo alpino (Alpi e Prealpi Carniche)

Depositi Permo-Carboniferi Pontebbani

Unità stratigrafiche coinvolte nell'orogenesi ercinica (varisica)

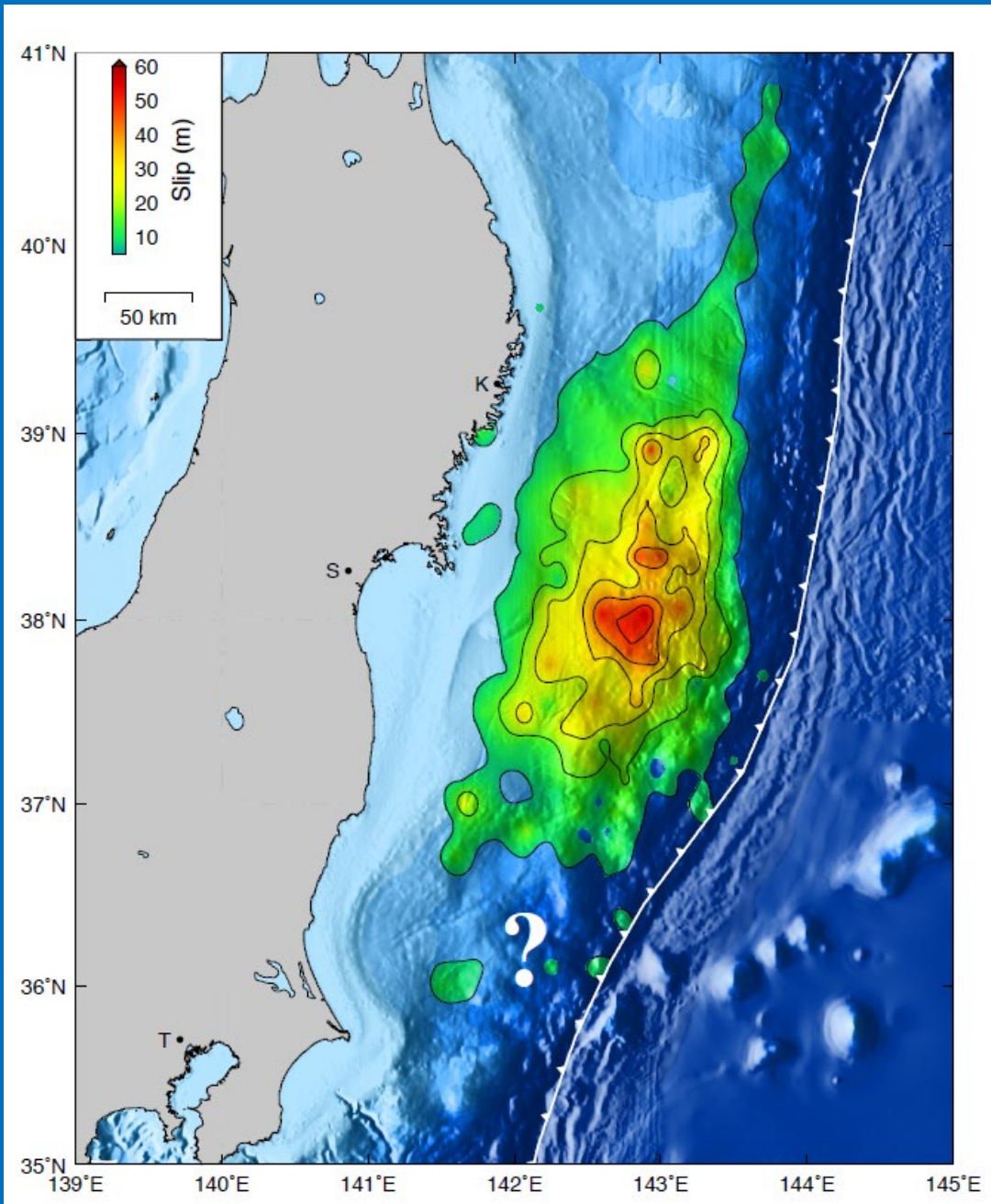






NOAA/NWS

Japan Trough, sisma e tsunami di Tohoku-oki («Fukushima»), M. 9,1

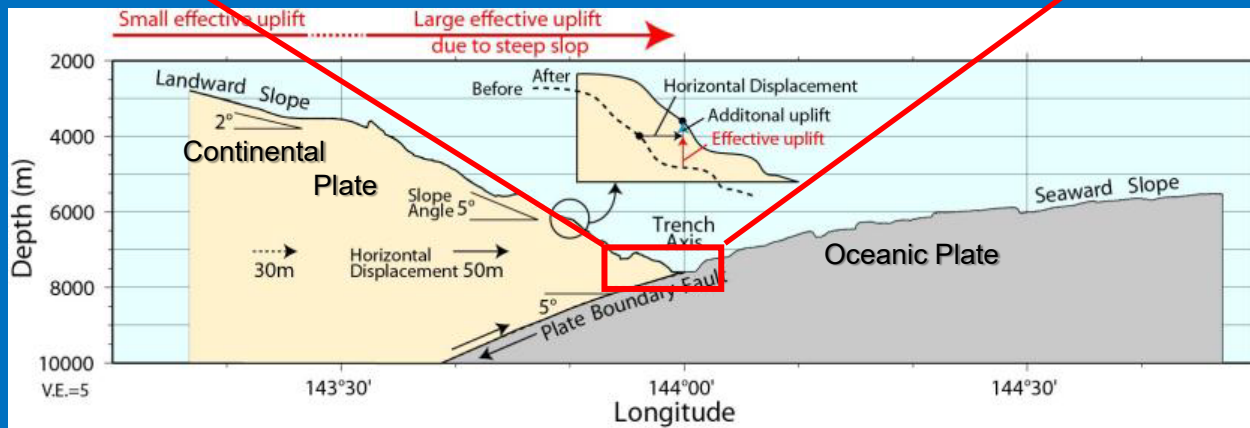
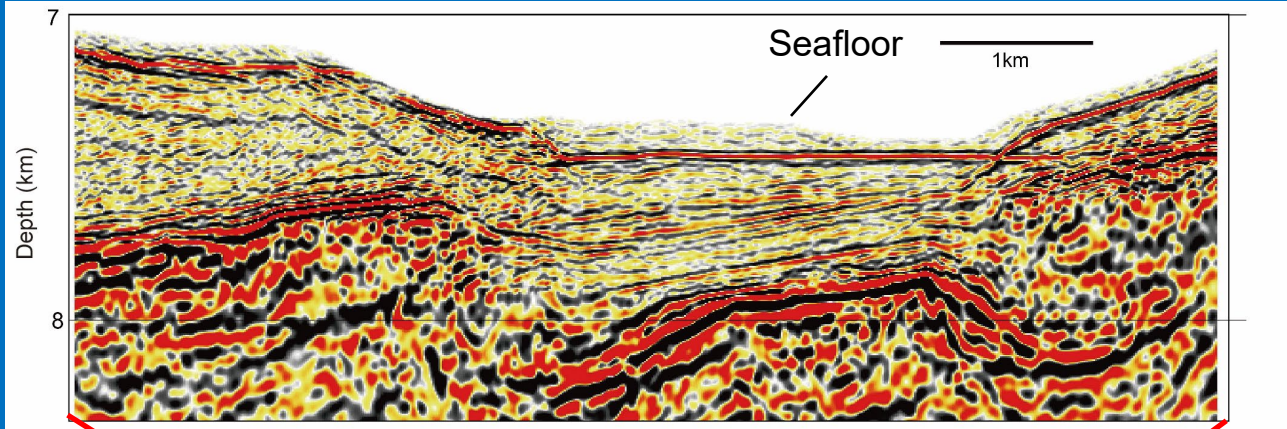


Tohoku-oki, movimento
stimato della faglia

Caltech

Sismica a riflessione prima e dopo il terremoto (per cortesia di Michael Strasser, University of Innsbruck)

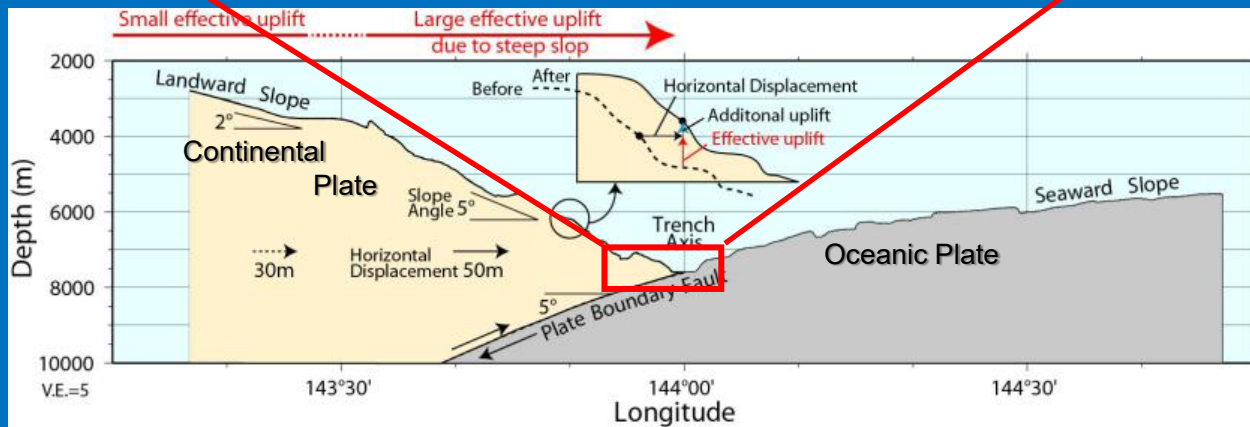
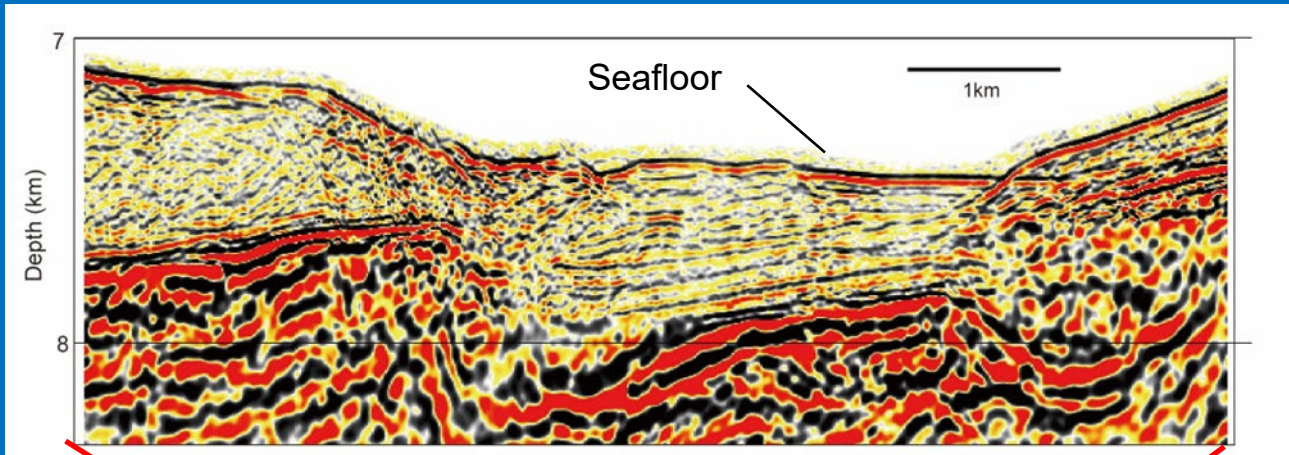
1999 (prima)



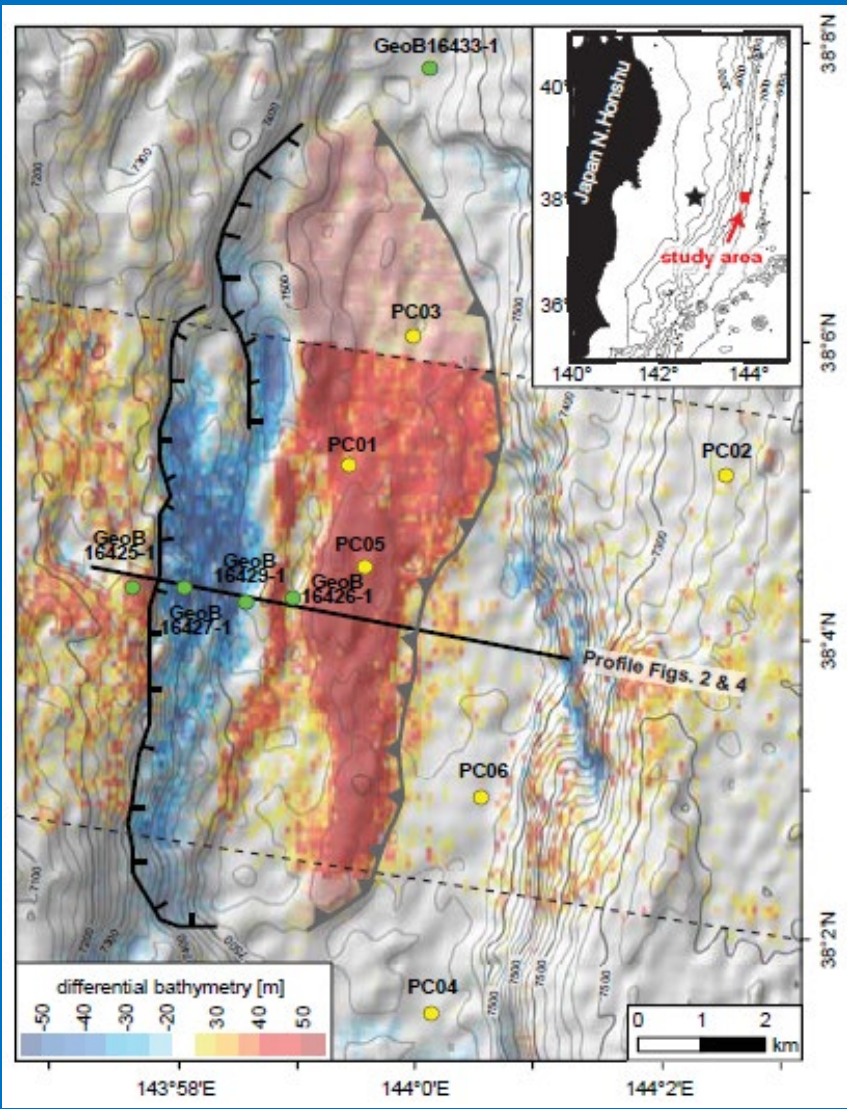
Kodaira et al 2012

Sismica a riflessione prima e dopo il terremoto (per cortesia di Michael Strasser, University of Innsbruck)

2011 (dopo)

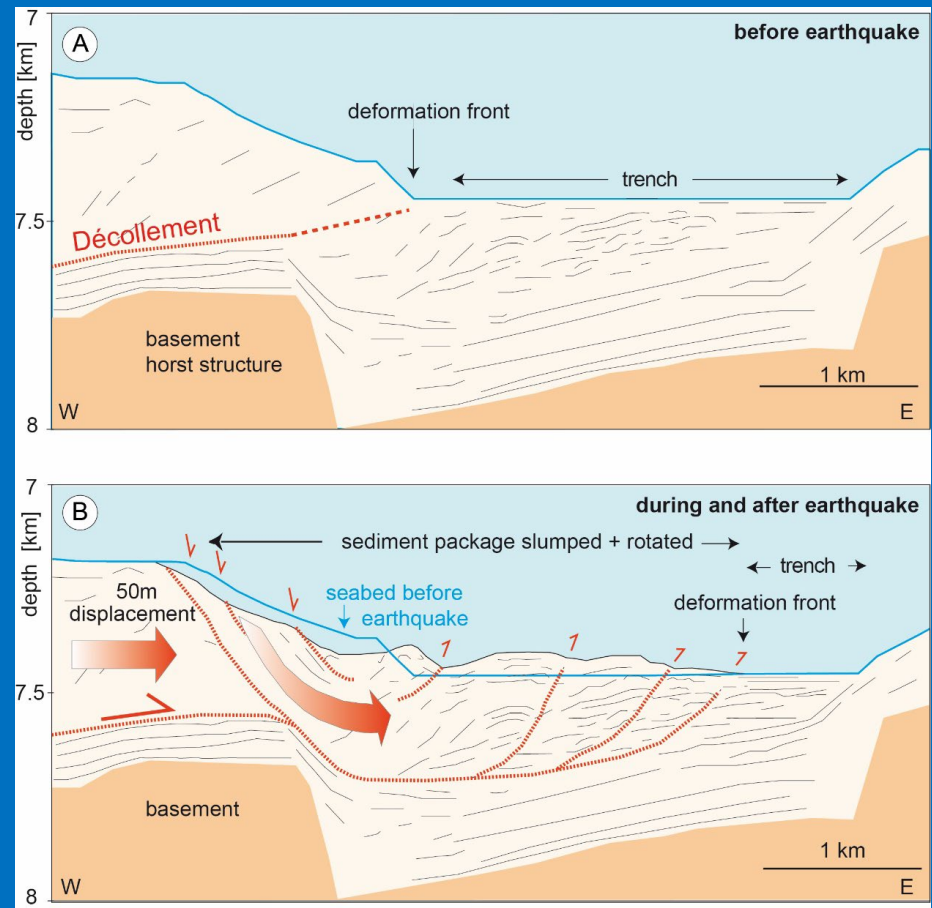


Kodaira et al 2012

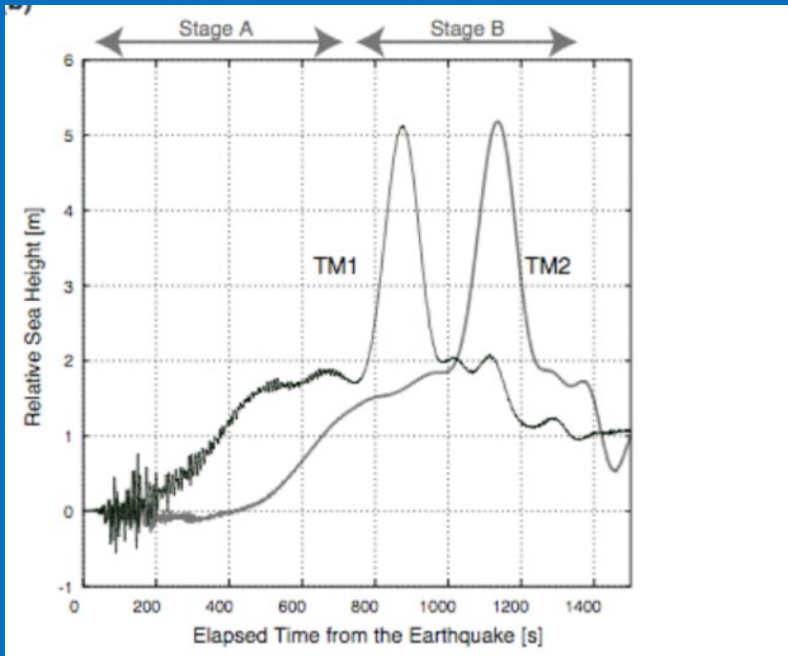
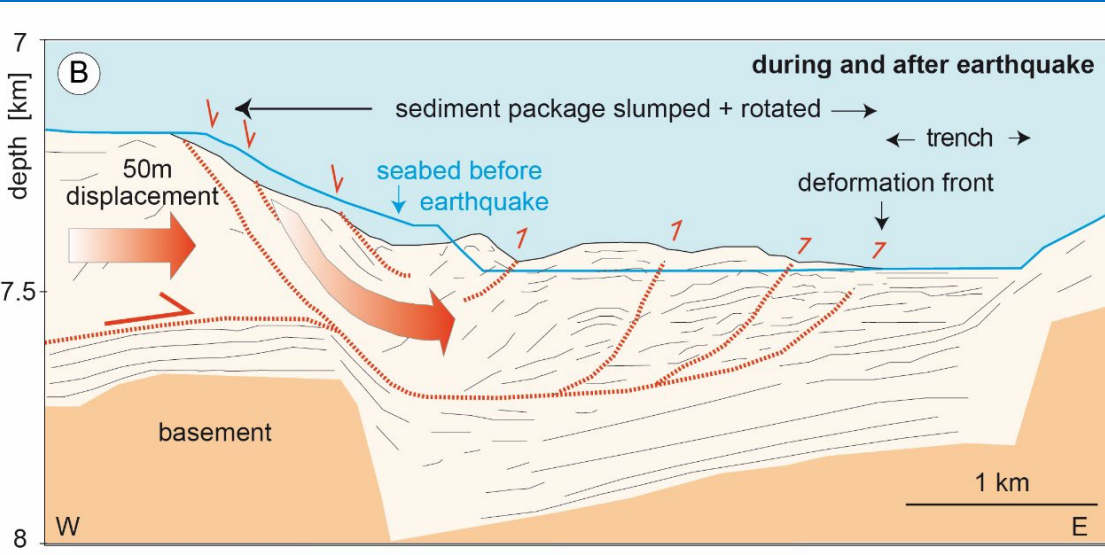


Strasser et al, 2013

Strasser et al, 2013



11 Marzo 2011, maremoto Tohoku-oki
(per cortesia di Michael Strasser, University of Innsbruck)



Boe tsunamometriche e tracciati relativi