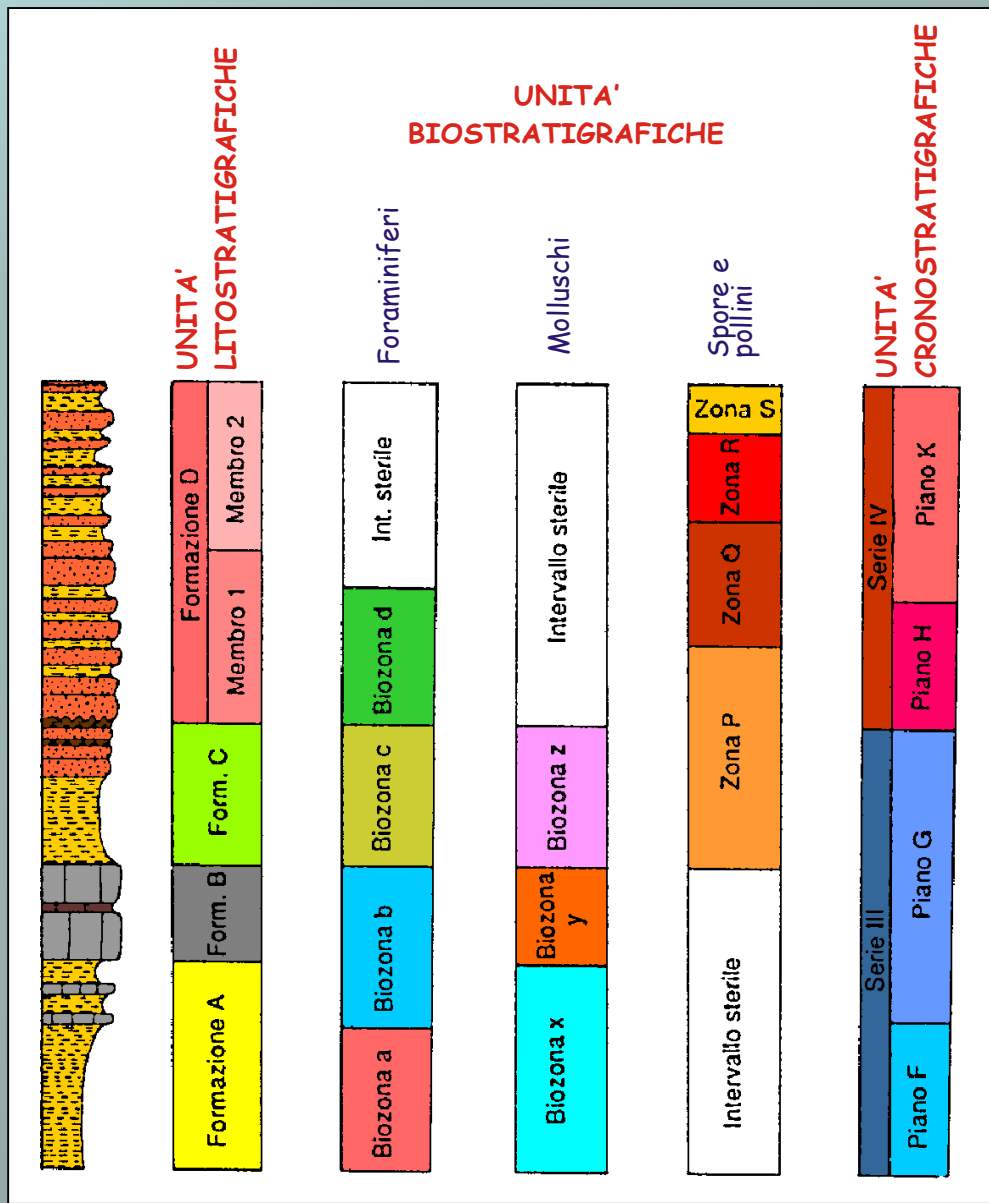
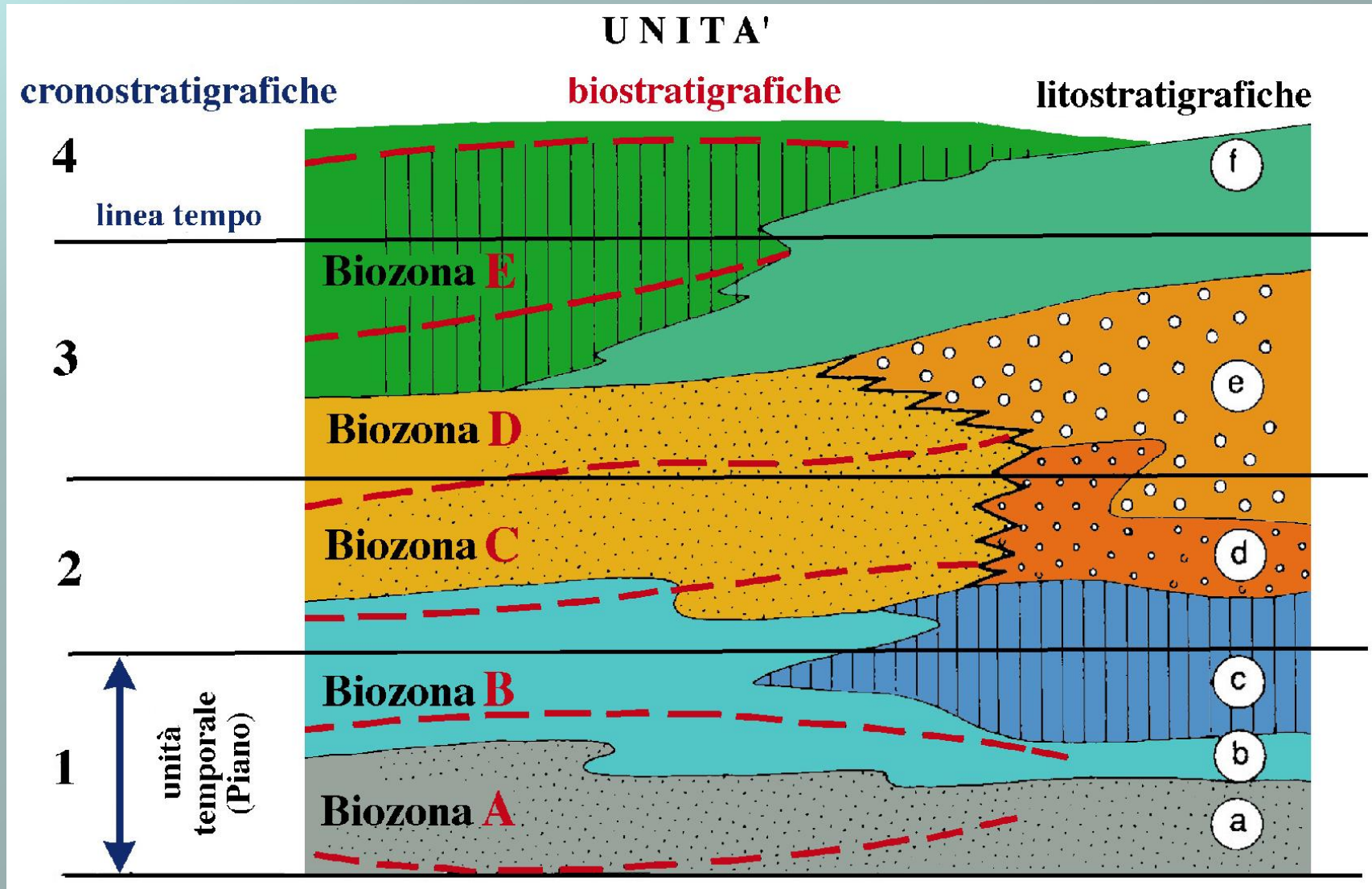


# **Rapporti tra unità stratigrafiche ed esempi di applicazioni**

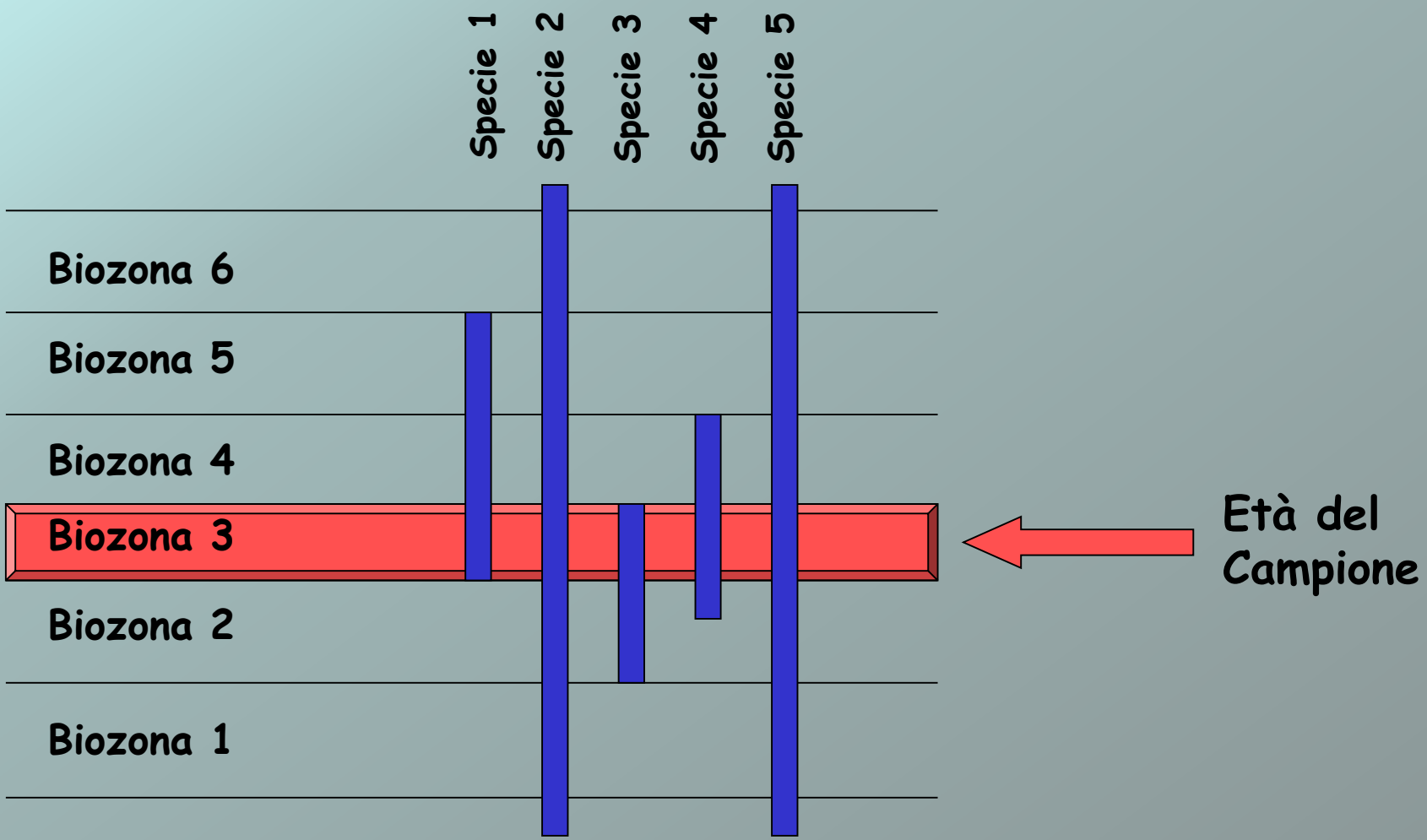
# Rapporti tra unità stratigrafiche



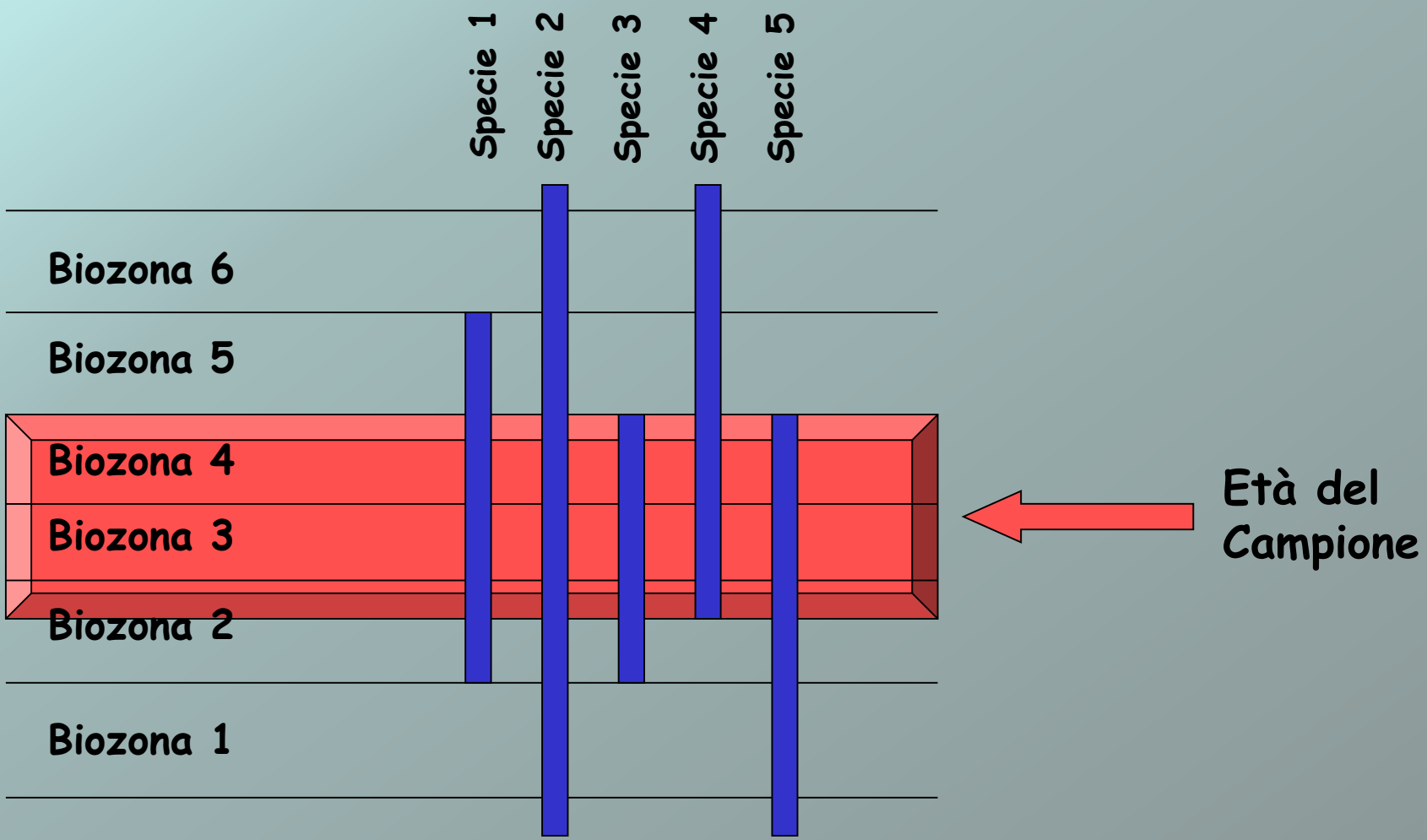
# Rapporti tra unità stratigrafiche



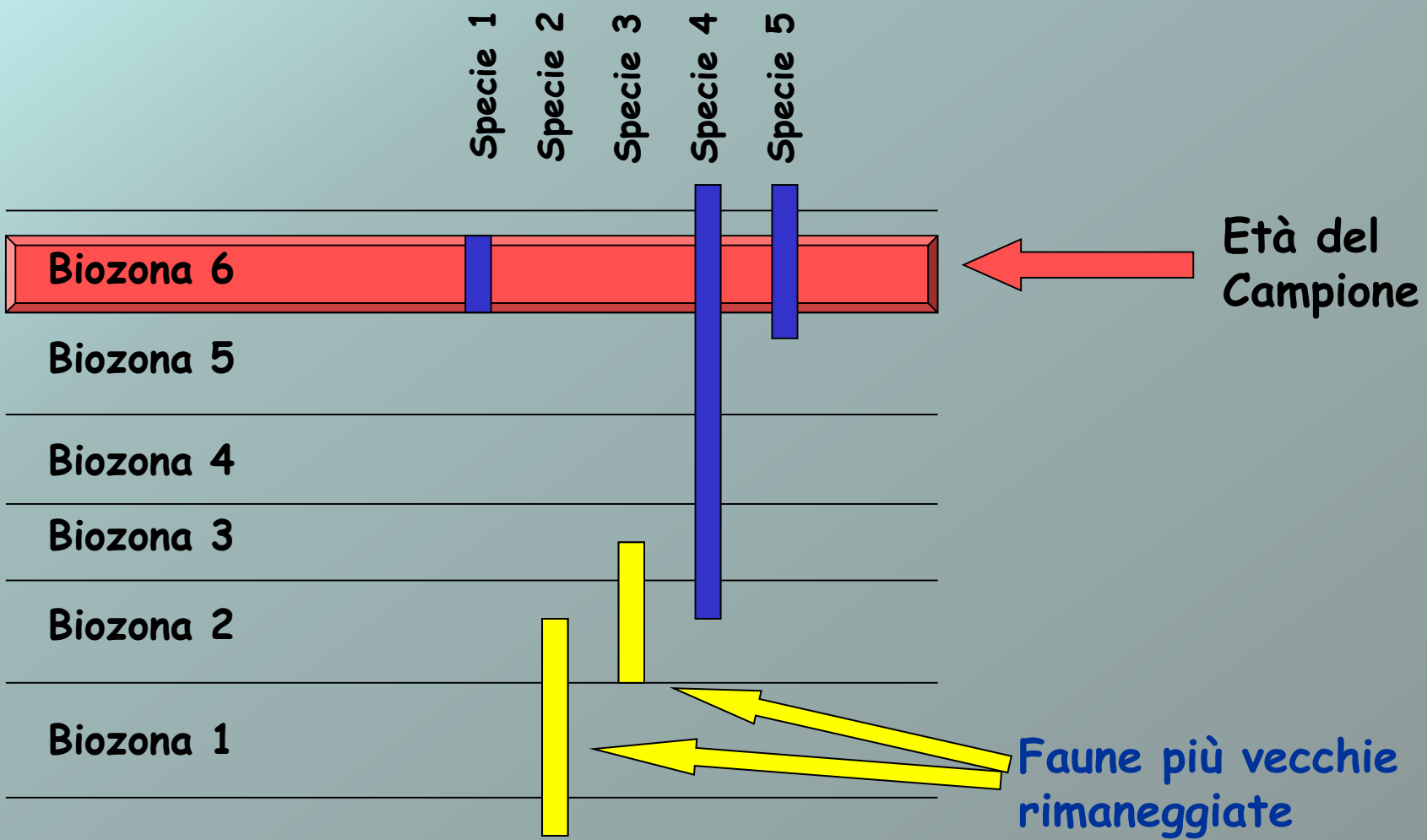
# Datazione di un campione



# Datazione di un campione



# Datazione di un campione



# Datazione di sezioni in base alla presenza di fossili

## 3 sezioni

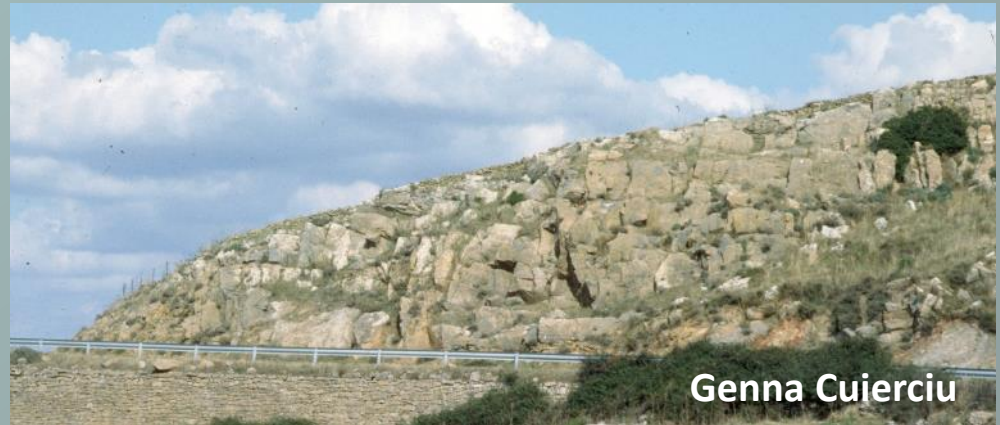
nella stessa unità litostratigrafica  
informale:

«Ockerkalk» della Sardegna SE

Litologia: calcari nodulari ocracei

Fossili: conodonti

Età: Siluriano

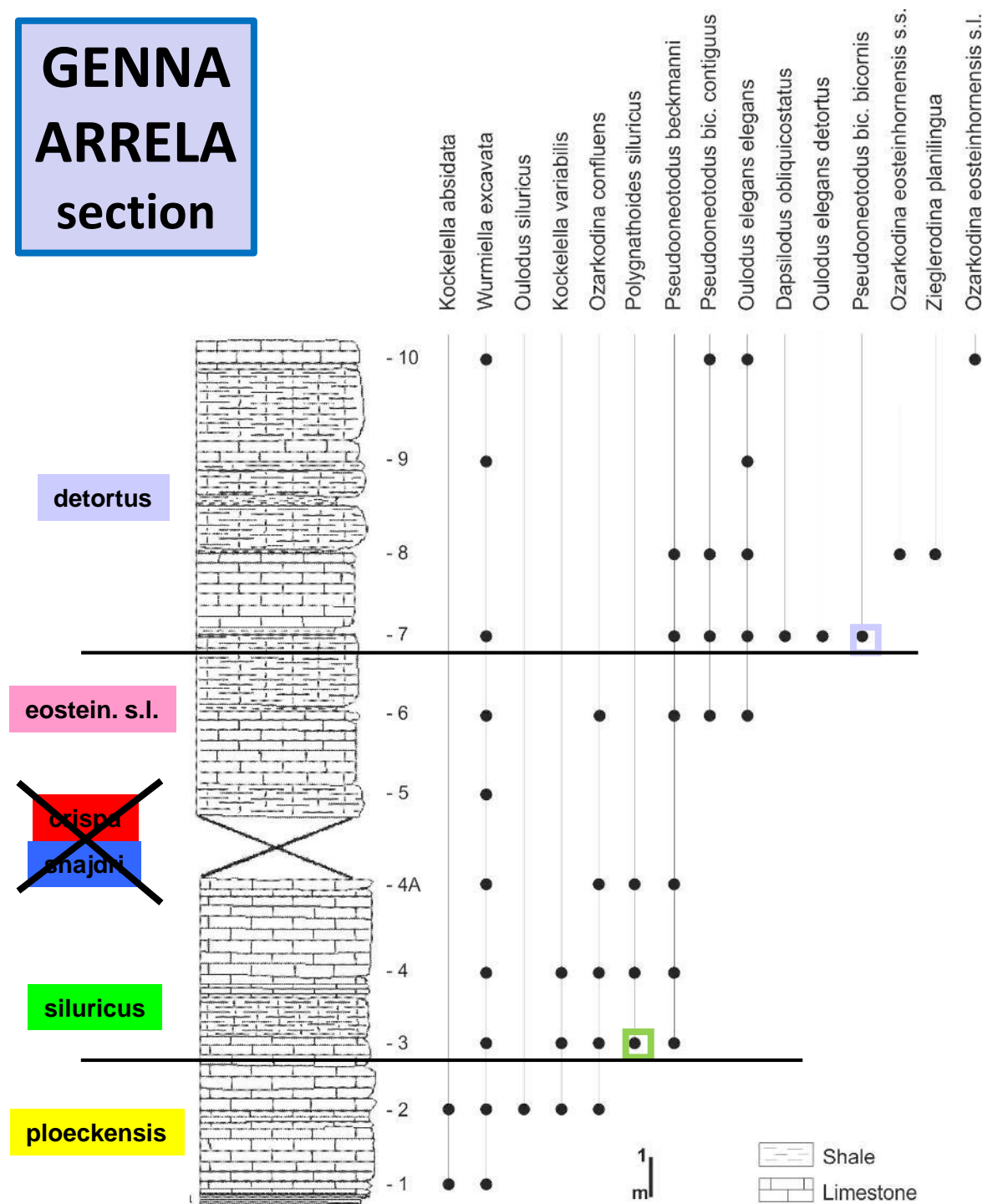






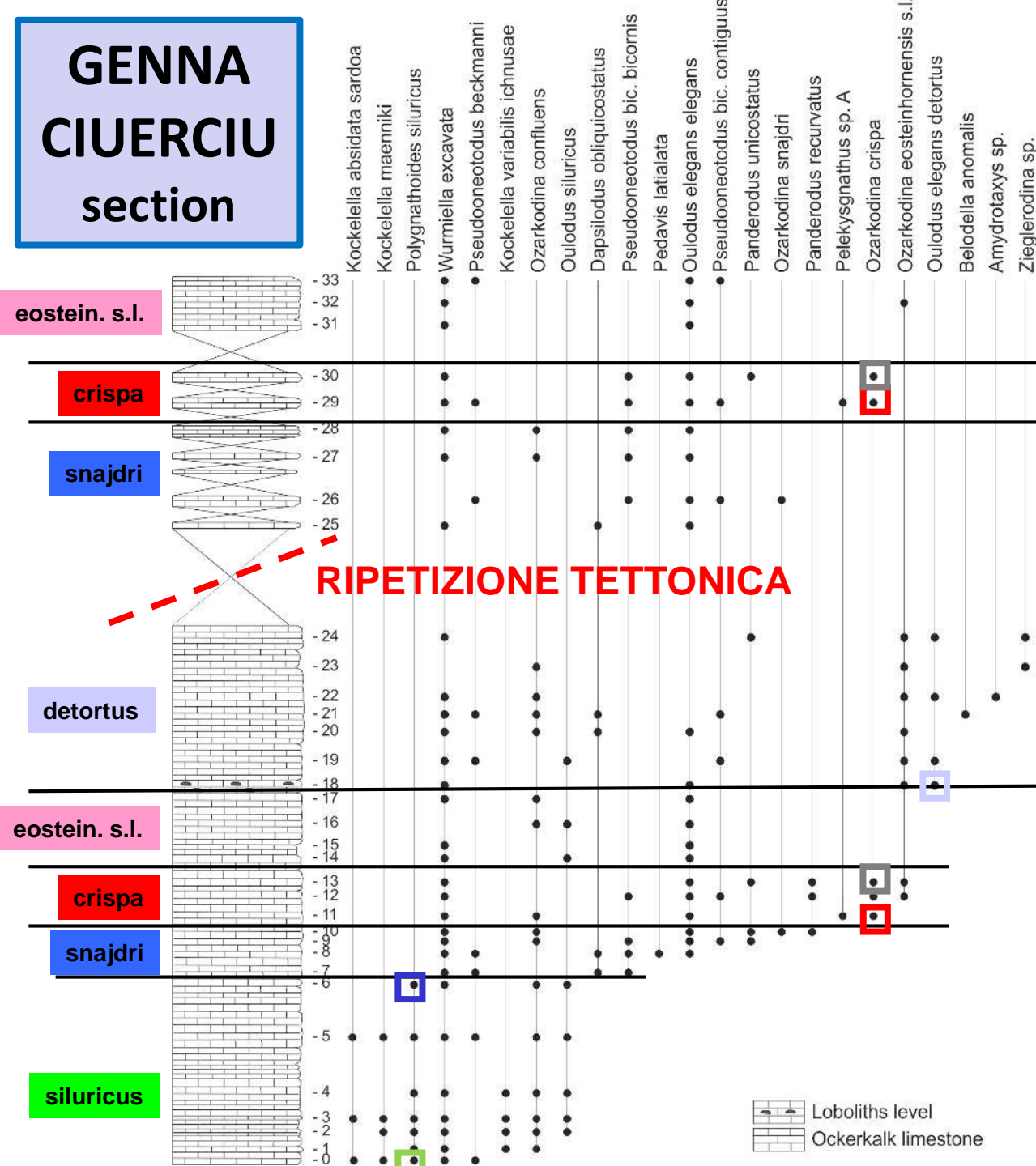
# GENNA ARRELA section

## Esercizi di biostratigrafia



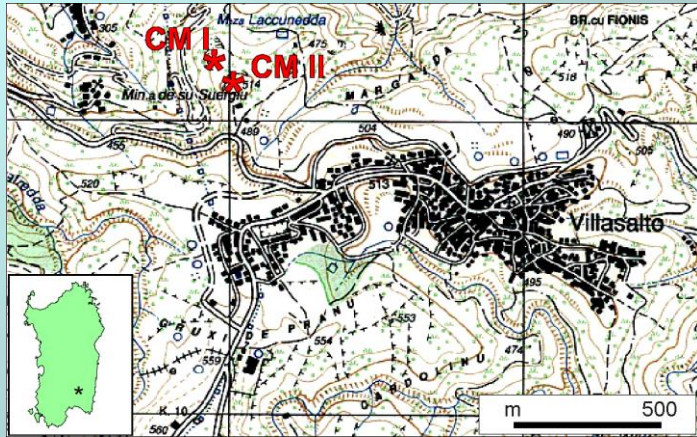
hesperius	FAD Icr. hesperius
el. detortus	FAD Oul. el. detortus
eosteinhornensis interval Zone	LAD Oz. crispa
crispa	FAD Oz. crispa
snajdri interval Zone	LAD P. siluricus
siluricus	FAD P. siluricus
ploeckensis	FAD A. ploeckensis
hamata	FAD W. hamata
v. variabilis i.Z.	LAD K. crassa
crassa	FAD K. crassa
bohemica	FAD Oz. bohemica
sagitta sagitta	FAD Oz. sagitta sagitta
sagitta rhenana	FAD Oz. sagitta rhenana
ranuliformis	FAD K. ranuliformis
amorphognath.	FAD Pt. amorphognathoides

# GENNA CIUERCIU section



## Esercizi di biostratigrafia

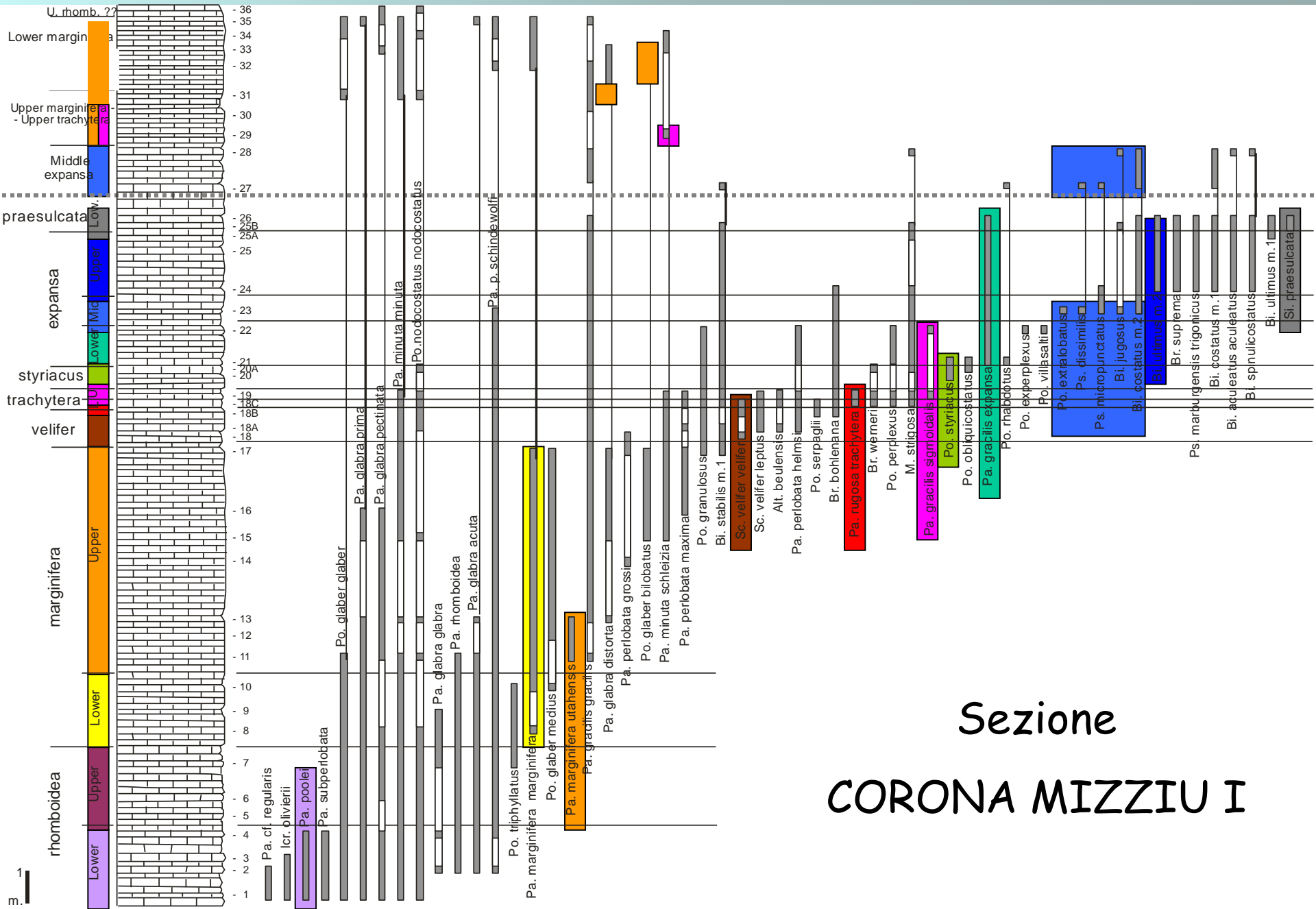
hesperius	FAD Icr. hesperius
el. detortus	FAD Oul. el. detortus
eosteinhornensis interval Zone	LAD Oz. crispa
crispa	FAD Oz. crispa
snajdri interval Zone	LAD P. siluricus
siluricus	FAD P. siluricus
ploeckensis	FAD A. ploeckensis
hamata	FAD W. hamata
v. variabilis i.Z.	LAD K. crassa
crassa	FAD K. crassa
bohémica	FAD Oz. bohémica
sagitta sagitta	FAD Oz. sagitta sagitta
sagitta rhenana	FAD Oz. sagitta rhenana
ranuliformis	FAD K. ranuliformis
amorphognath.	FAD Pt. amorphognathoides



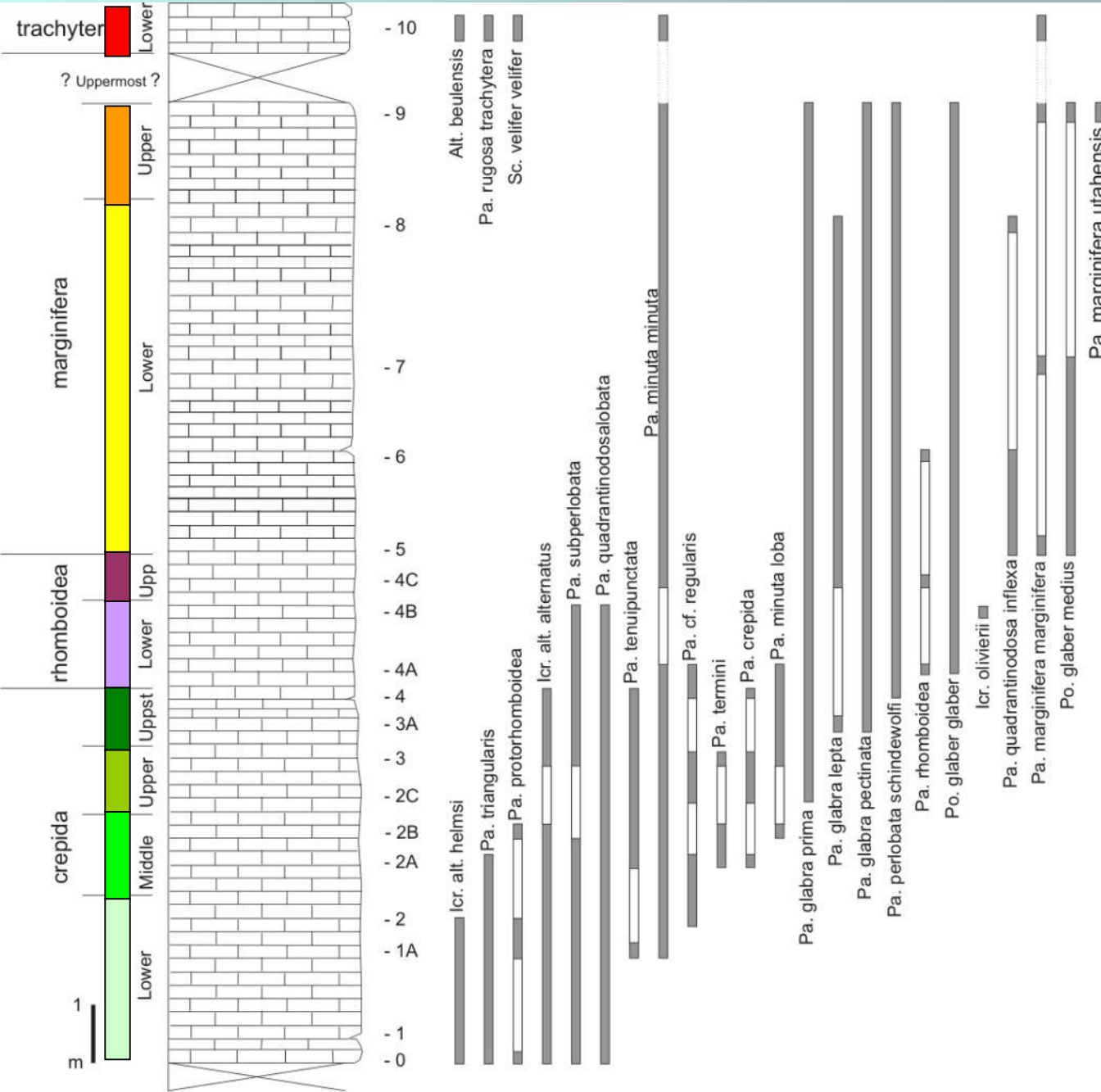
## Sezioni

CORONA MIZZIU I  
CORONA MIZZIU II





Sezione  
CORONA MIZZIU I



Sezione  
CORONA  
MIZZIU I

Sezioni

CORONA MIZZIU I  
CORONA MIZZIU II

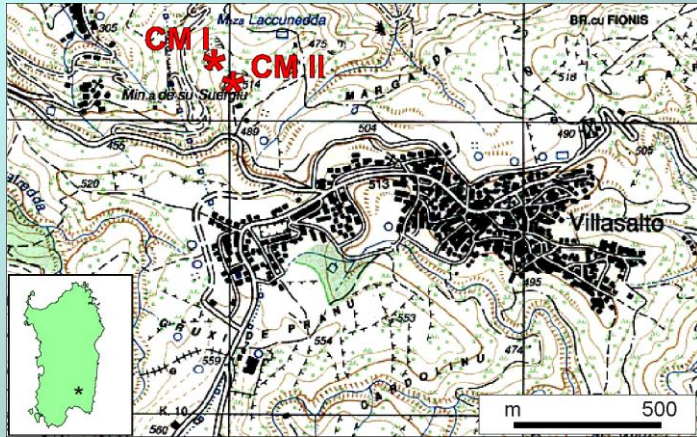
	STANDARD CONODONT ZONES <small>(Ziegler &amp; Sandberg, 1990; Sandberg et al., 1978)</small>	SARDINIAN CONODONT ZONES
Tournaisian (L. Carb.)	Late duplicata	Upper duplicata
	Early duplicata	Lower duplicata
	sulcata	
Famennian (Upper Devonian)	Late presulcata	
	Middle presulcata	Lower presulcata
	Early presulcata	
	Late expansa	Upper expansa
	Middle expansa	Middle expansa
	Early expansa	Lower expansa
	Late postera	styriacus
	Early postera	
	Late trachytera	Upper trachytera
	Early trachytera	Lower trachytera
	Latest marginifera	velifer
	Late marginifera	Upper marginifera
	Early marginifera	Lower marginifera
	Late rhomboidea	Upper rhomboidea
	Early rhomboidea	Lower rhomboidea
	Latest crepida	Uppermost crepida
	Late crepida	Upper crepida
	Middle crepida	Middle crepida
	Early crepida	Lower crepida
	Late triangularis	Upper triangularis

CM I



CM II





## Sezioni

CORONA MIZZIU I  
CORONA MIZZIU II



# Datazione di sezioni in base alla presenza di fossili

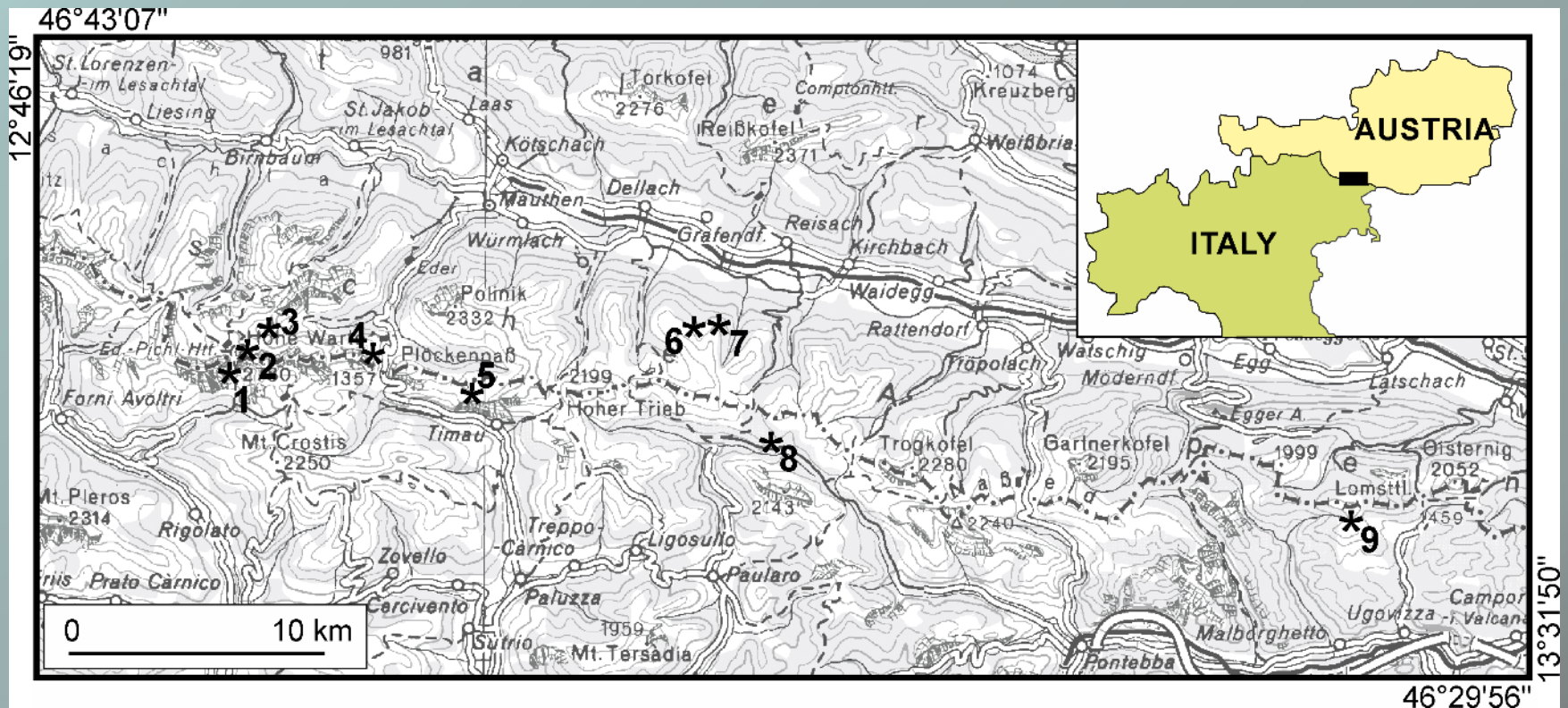
## LIMITE SILURIANO/DEVONIANO nelle ALPI CARNICHE

9 sezioni (limite esposto 10 volte)

CORRADINI C., CORRIGA M.G., PONDRELLI M. & SUTTNER T.J.,  
2019.

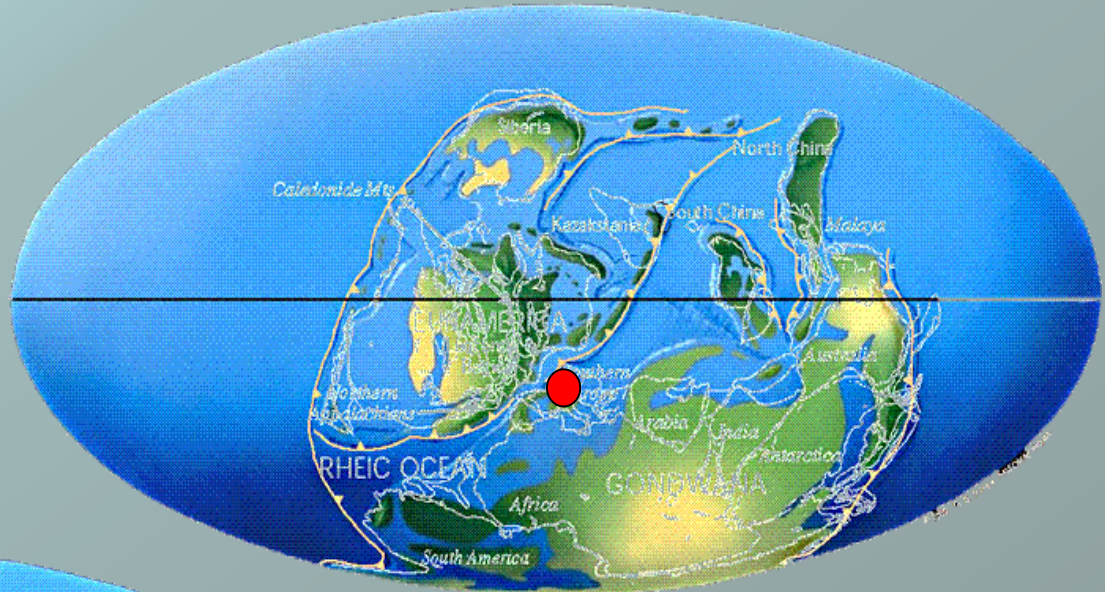
Conodonts across the Silurian/Devonian boundary in  
the Carnic Alps (Austria and Italy).

*Palaeogeography, Palaeoclimatology, Palaeoecology*,  
549, 109097, doi: 10.1016/j.palaeo.2019.02.023

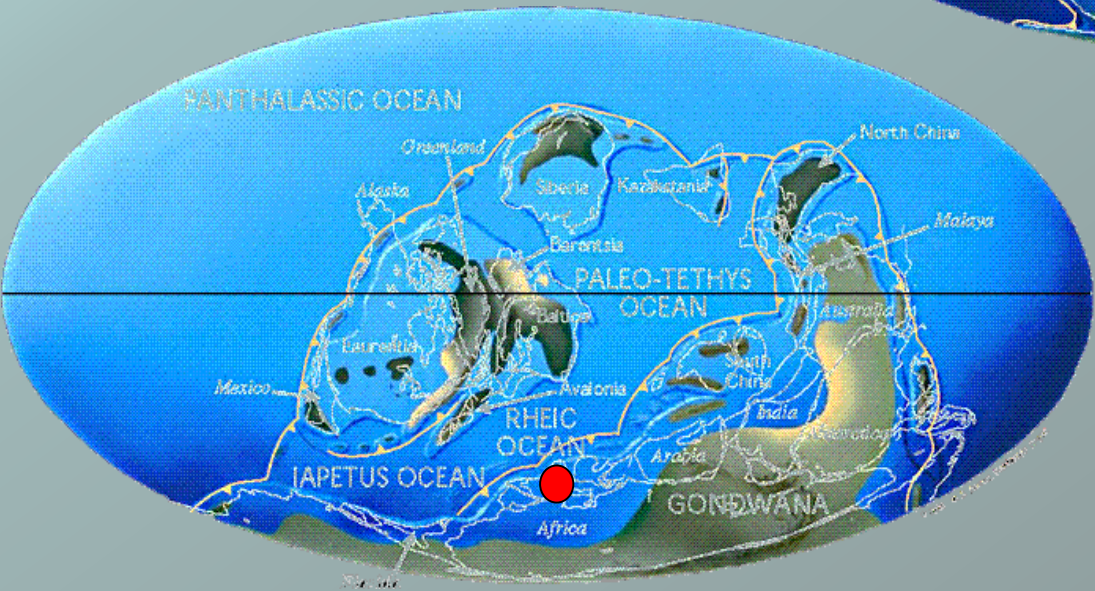




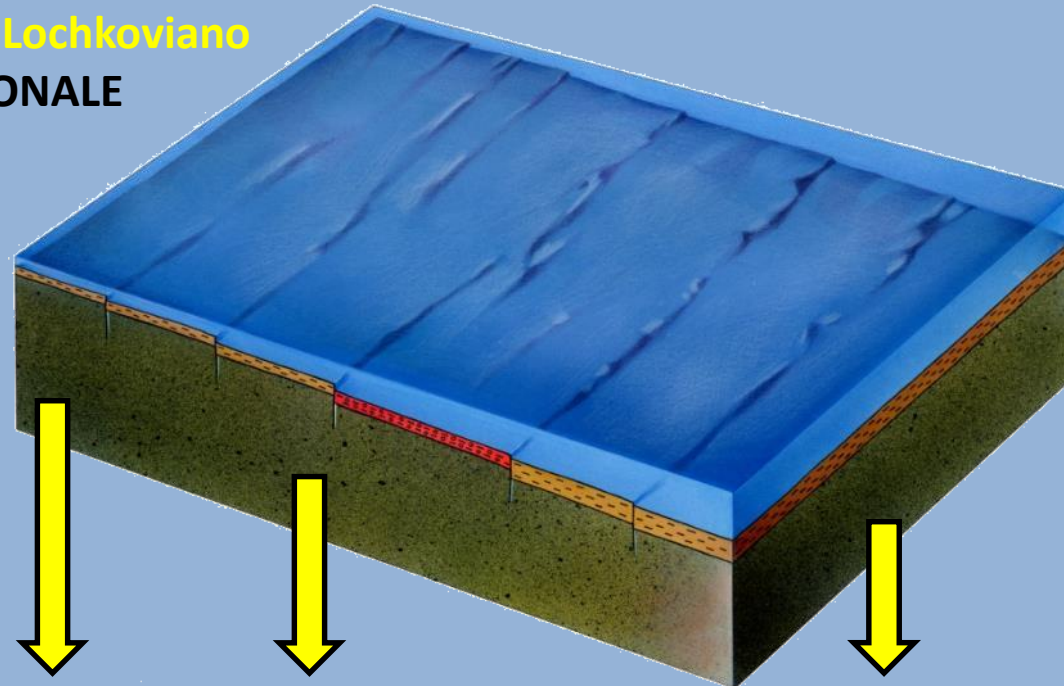
390 Ma – Lower Devonian



425 Ma - Silurian



**Siluriano superiore – Lochkoviano**  
**AMBIENTE DEPOSIZIONALE**



**Shallow water grain-/packstones**



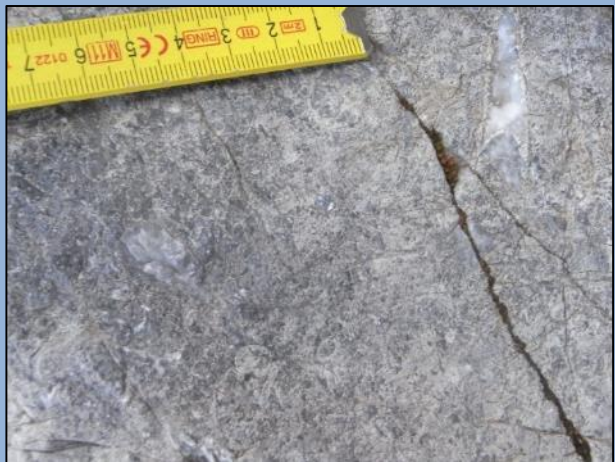
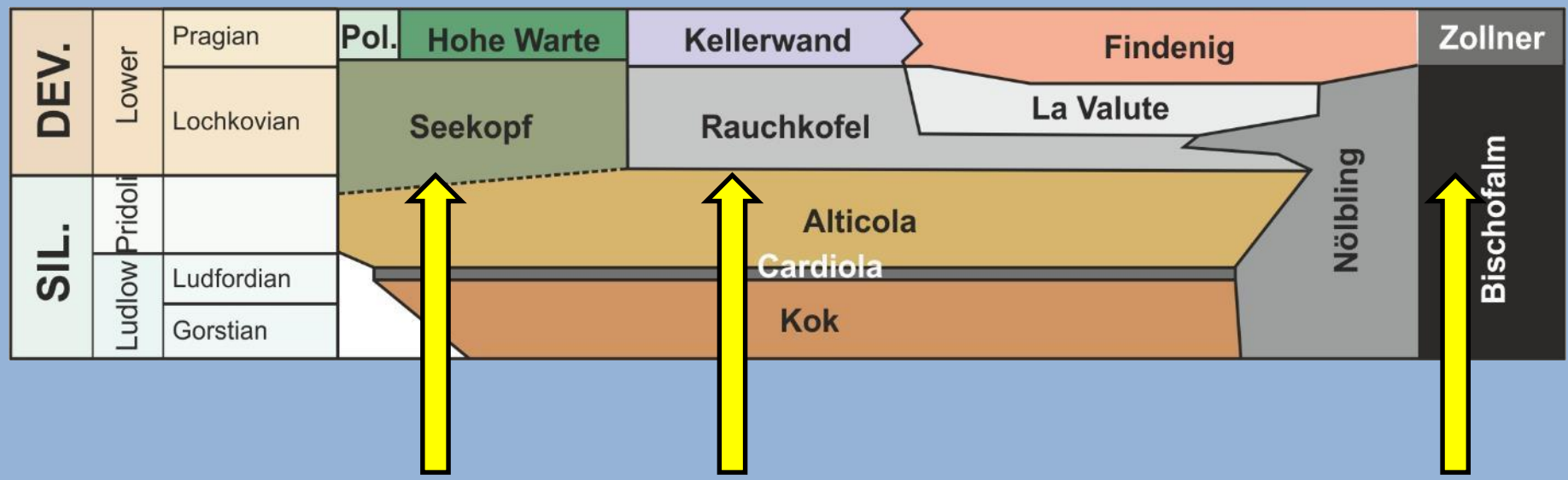
**Orthoceras limestones**



**Graptolitic shales**

Siluriano superiore – Lochkoviano

LITOSTRATIGRAFIA



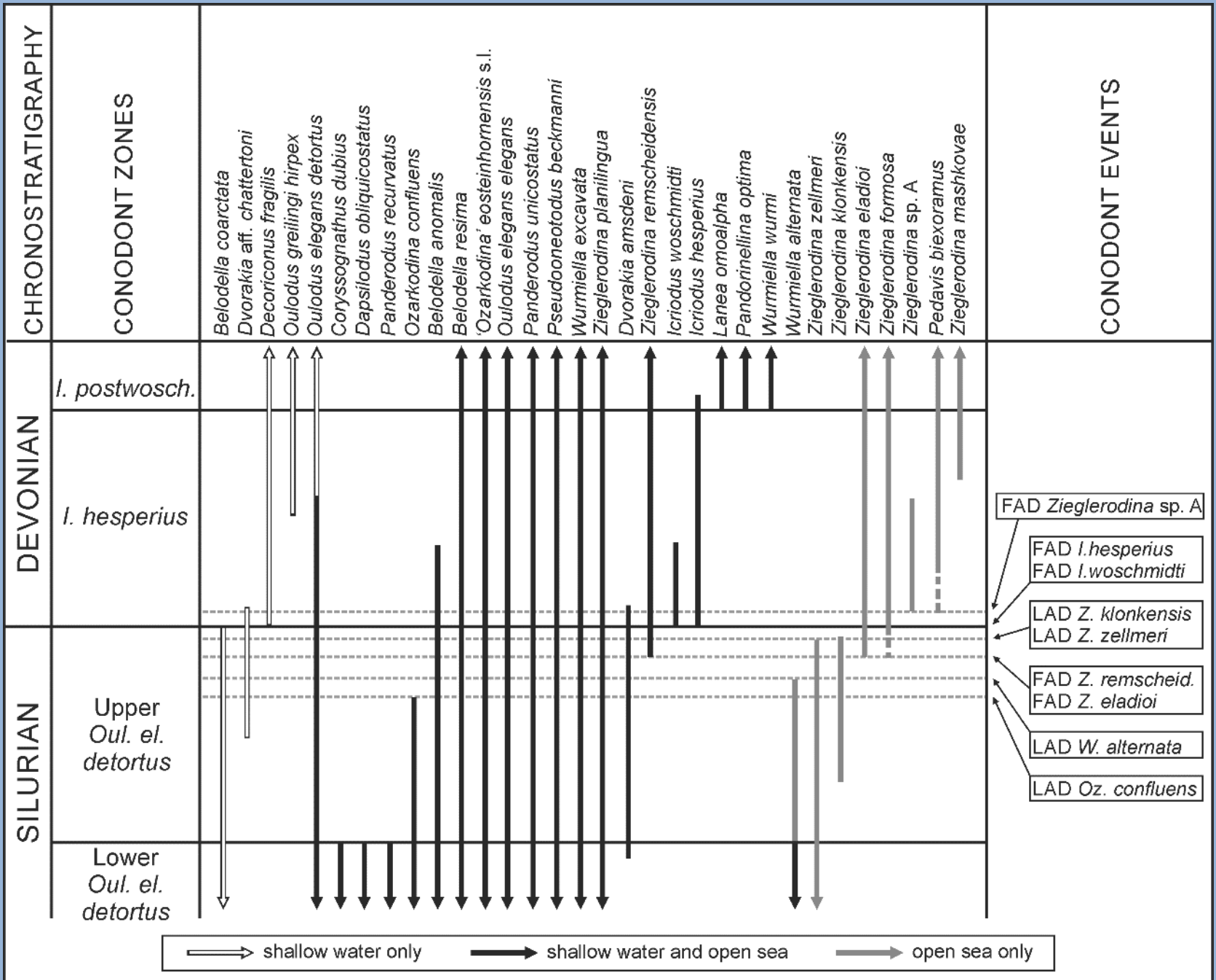
Shallow water grain-/packstones

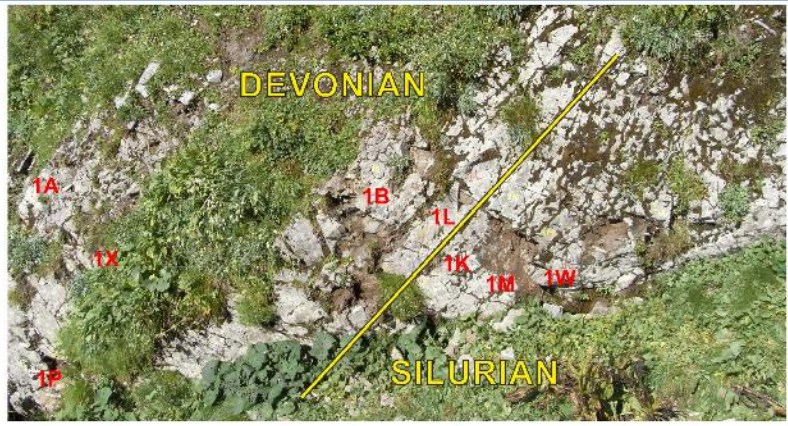


Orthoceras limestones



Graptolitic shales

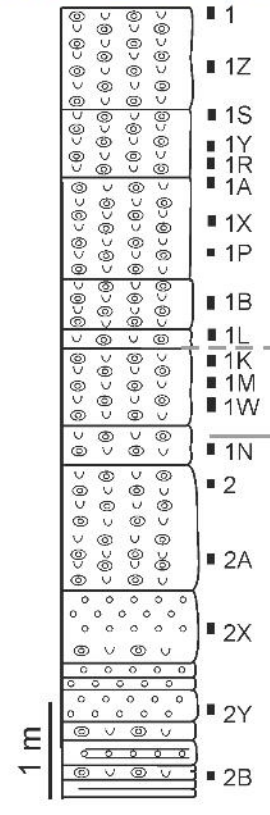




SILURIAN  
PRIDOLI

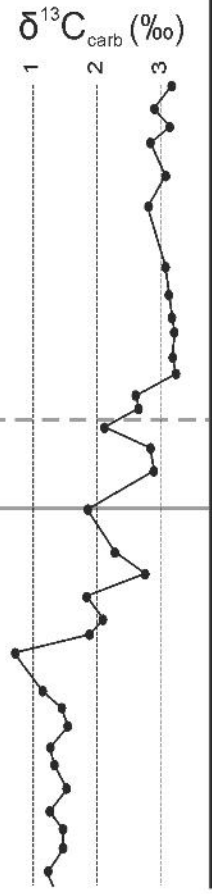
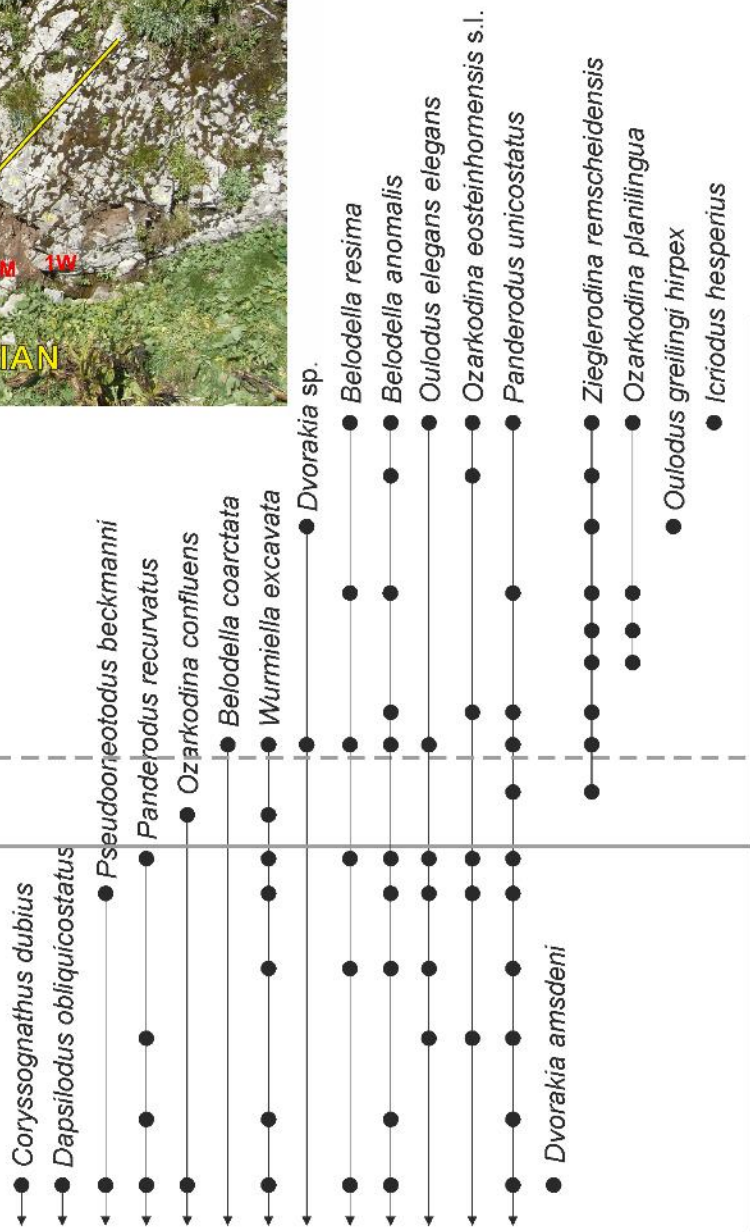
DEVONIAN  
LOWER  
Lochkovian

See Kopf



highly fossiliferous limestone

crinoidal limestone



RIFUGIO  
LAMBERTENGI  
FONTANA III  
section

*I. hesperius*

Upper  
*Oul. el. detortus*

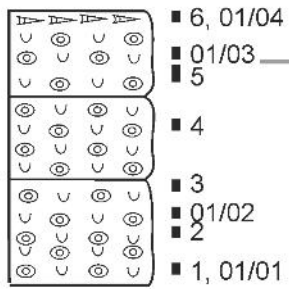
Lower  
*Oul. el. detortus*



SILURIAN DEV.  
PRIDOLI LOW.  
Lochk.

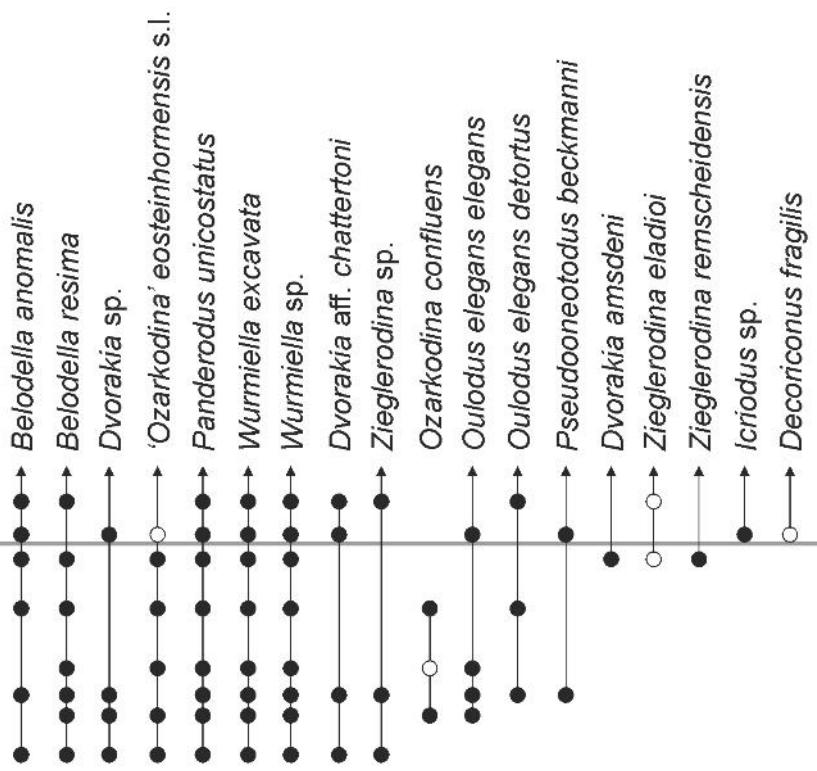
Seekopf

1 m



highly fossiliferous limestone

cephalopod rich bed



SEEWARTE section

*I. hesperius*

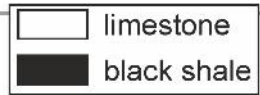
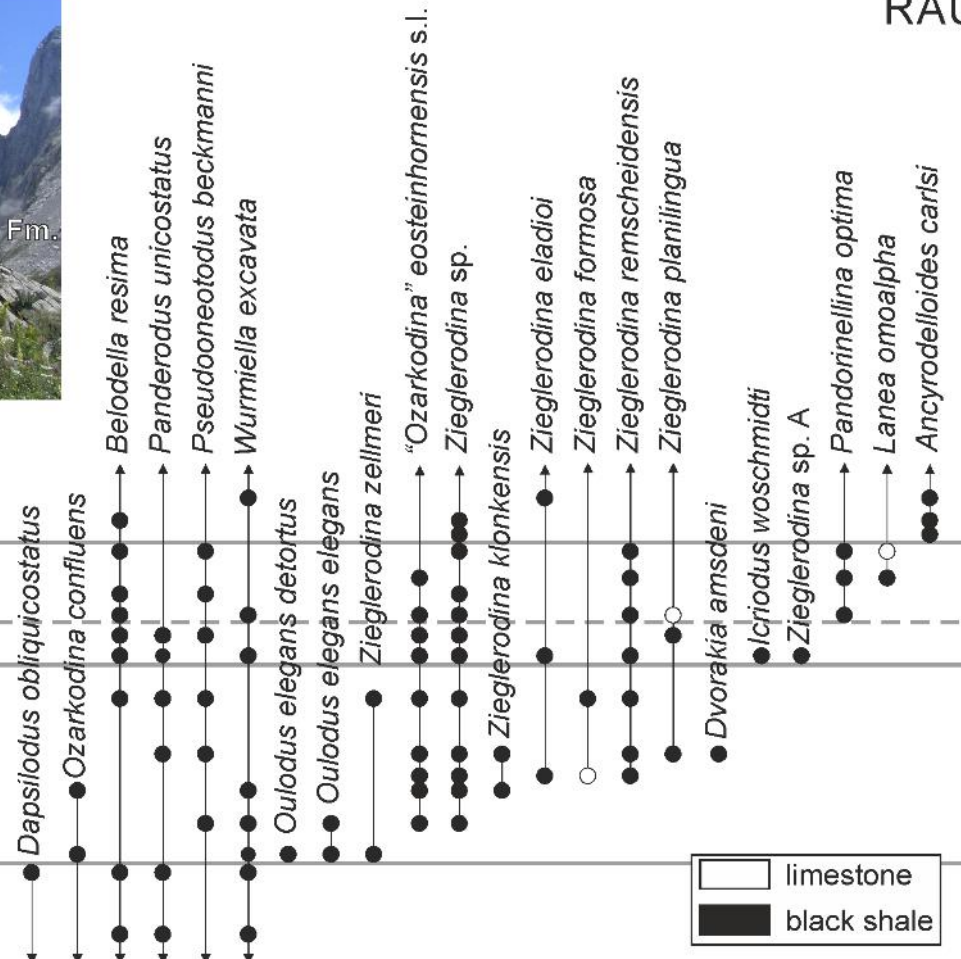
Upper *Oul. el. detortus*



SILURIAN	PRIDOLI	DEVONIAN	LOWER
	Alticola	Rauchkofel	Lochkovian

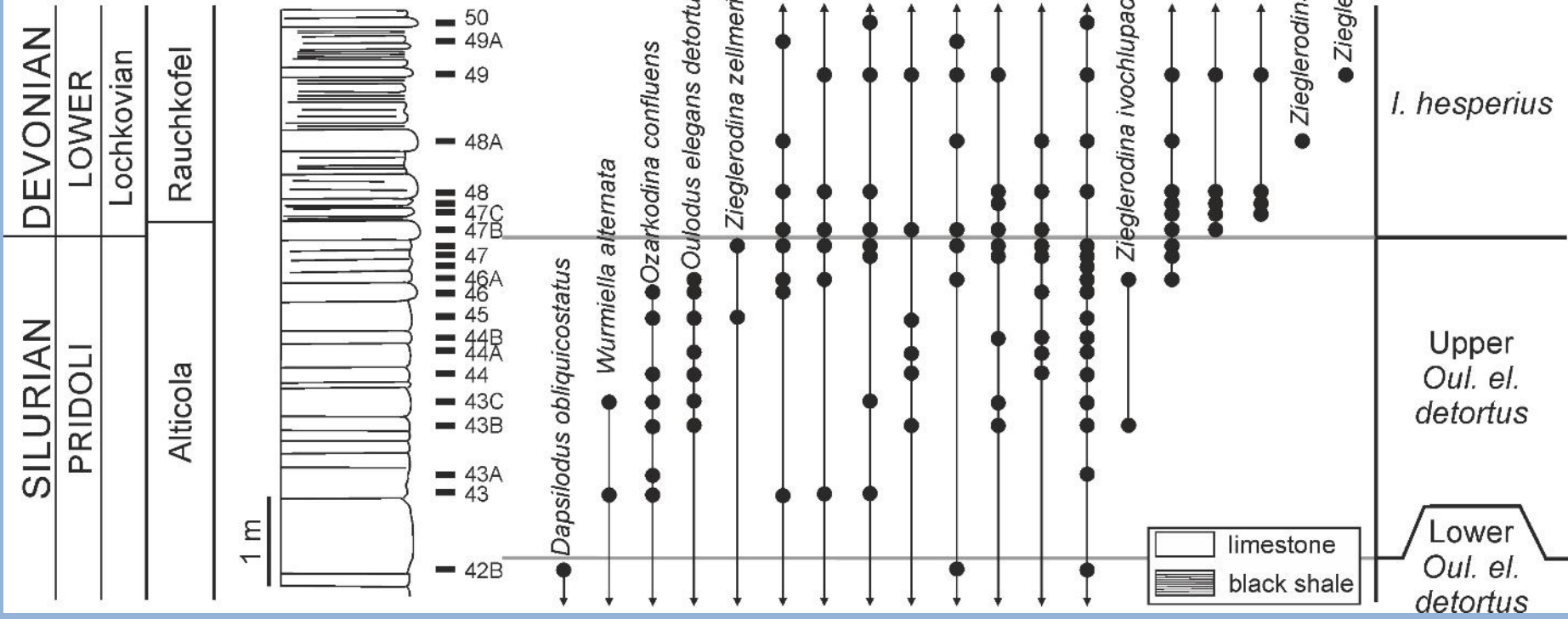
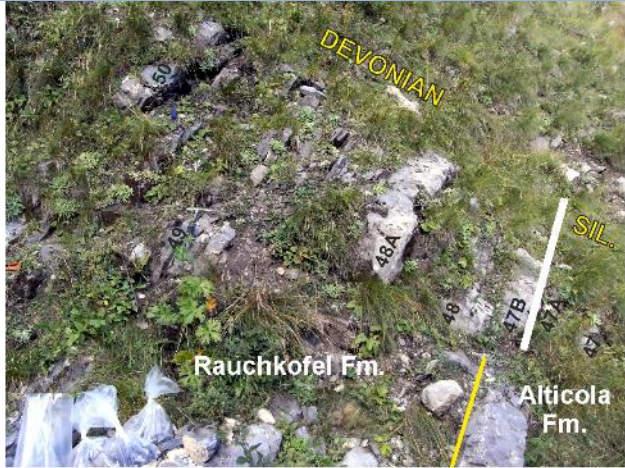


- 201g
- 201f
- 201e
- 201c
- 201b1
- 201b
- 201a
- 201; 332; 7A
- 200; 7W
- 7K
- 199
- 331; 198; 7Z
- 7Y
- 7X
- 7
- 330; 6



RAUCHKOFEL  
BODEN  
section

- Ad. carlsi*
- I. postwosch.*
- I. hesperius*
- Upper  
*Oul. el. detortus*
- Lower  
*Oul. el. detortus*

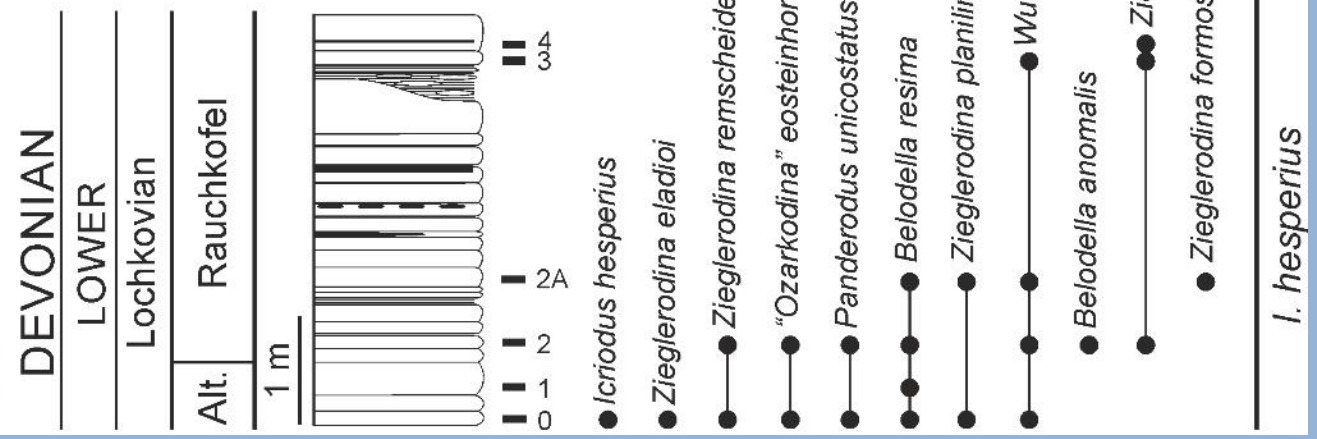


	limestone
	black shale



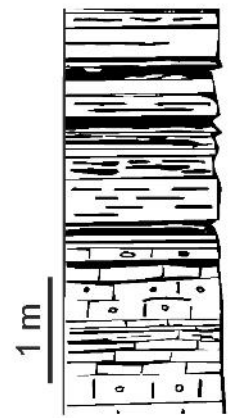


### FREIKOFEL SOUTH II section

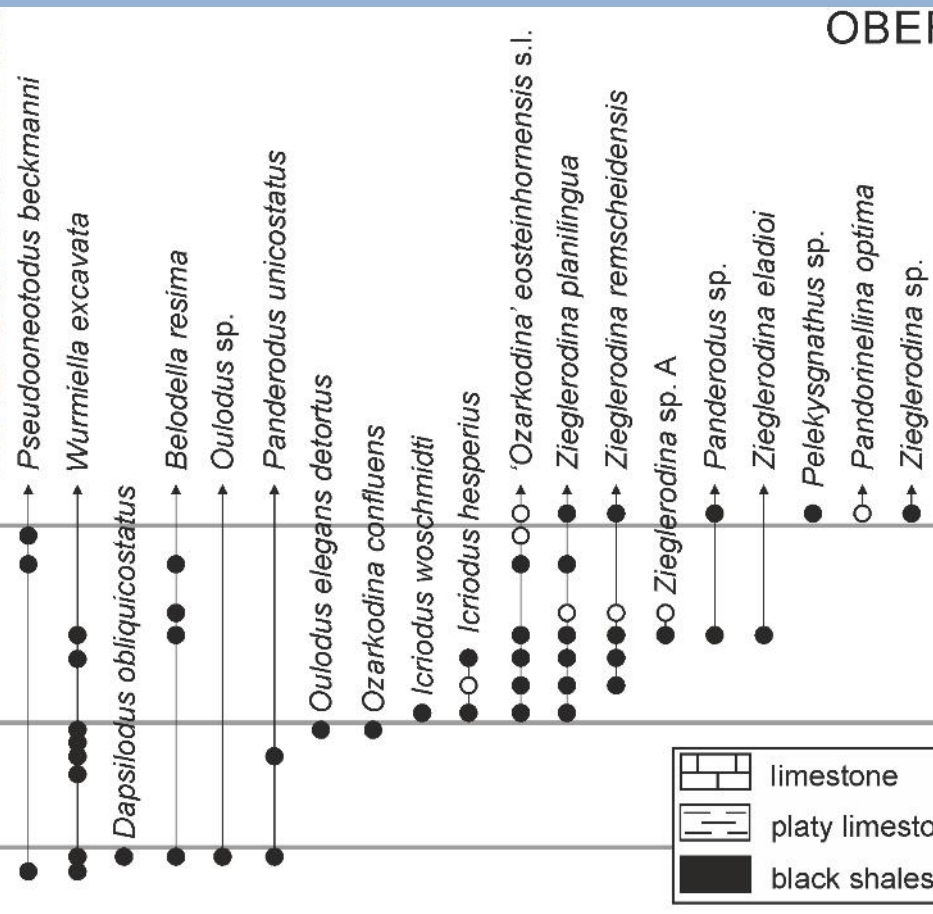




SILUR. DEVON.
PRIDOLI LOWER
Lochkovian
Alticola Rauchkofel



- 23
- 22
- 21
- 20
- 19
- 18
- 17
- 16
- 14
- 12
- 11
- 10
- oo



	limestone
	platy limestone
	black shales

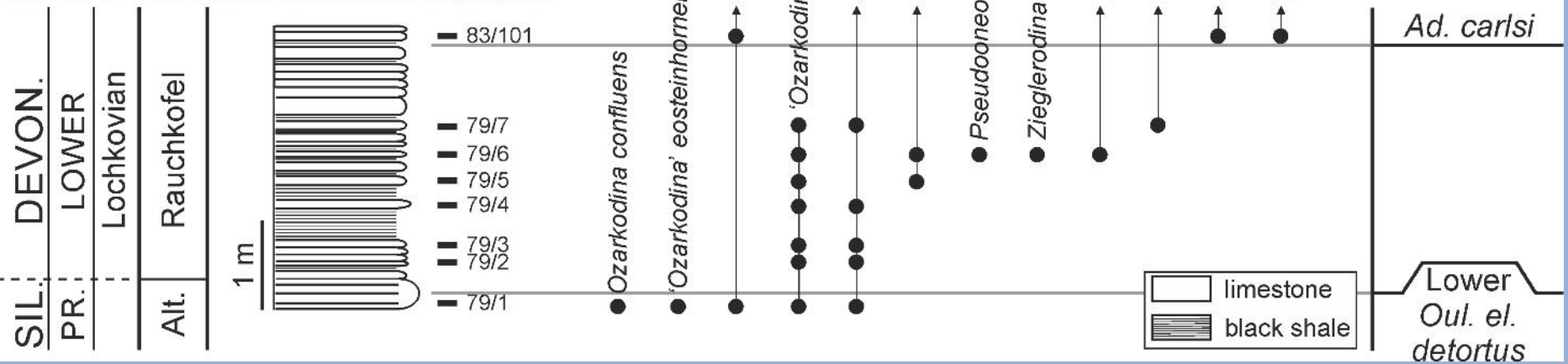
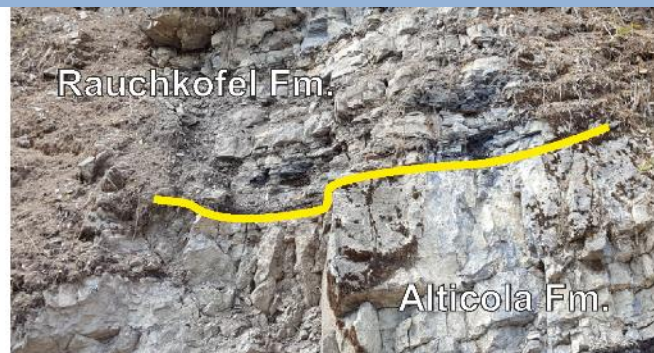
*I. postwosch.*

*I. hesperius*

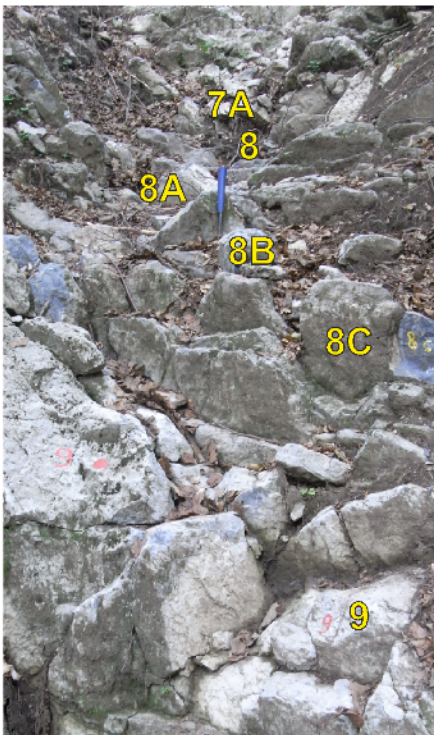
Upper  
*Oul. el. detortus*

Lower  
*Oul. e. detortus*

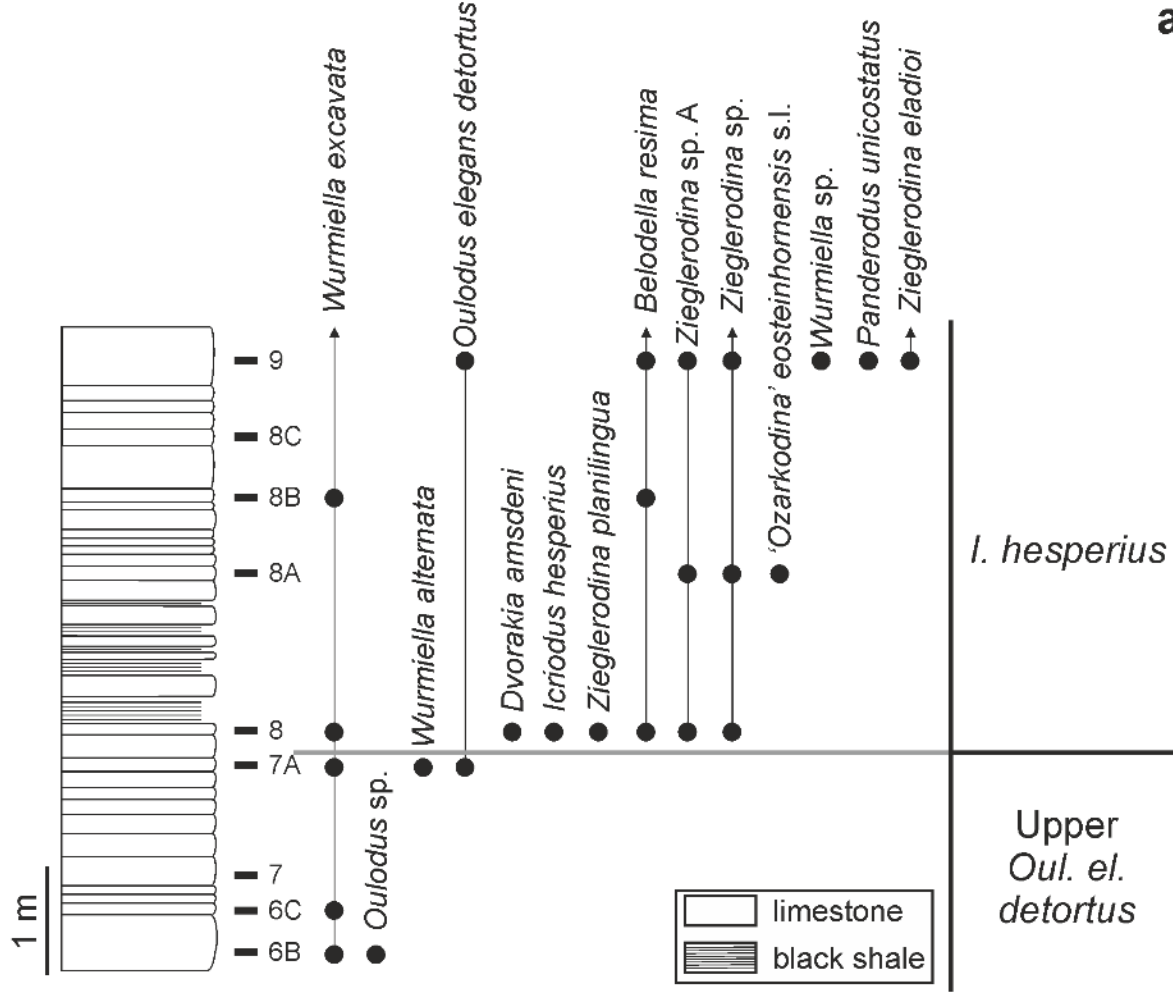
**OBERBUCHACH II section**



RIO MALINFIER WEST section  
Sector A

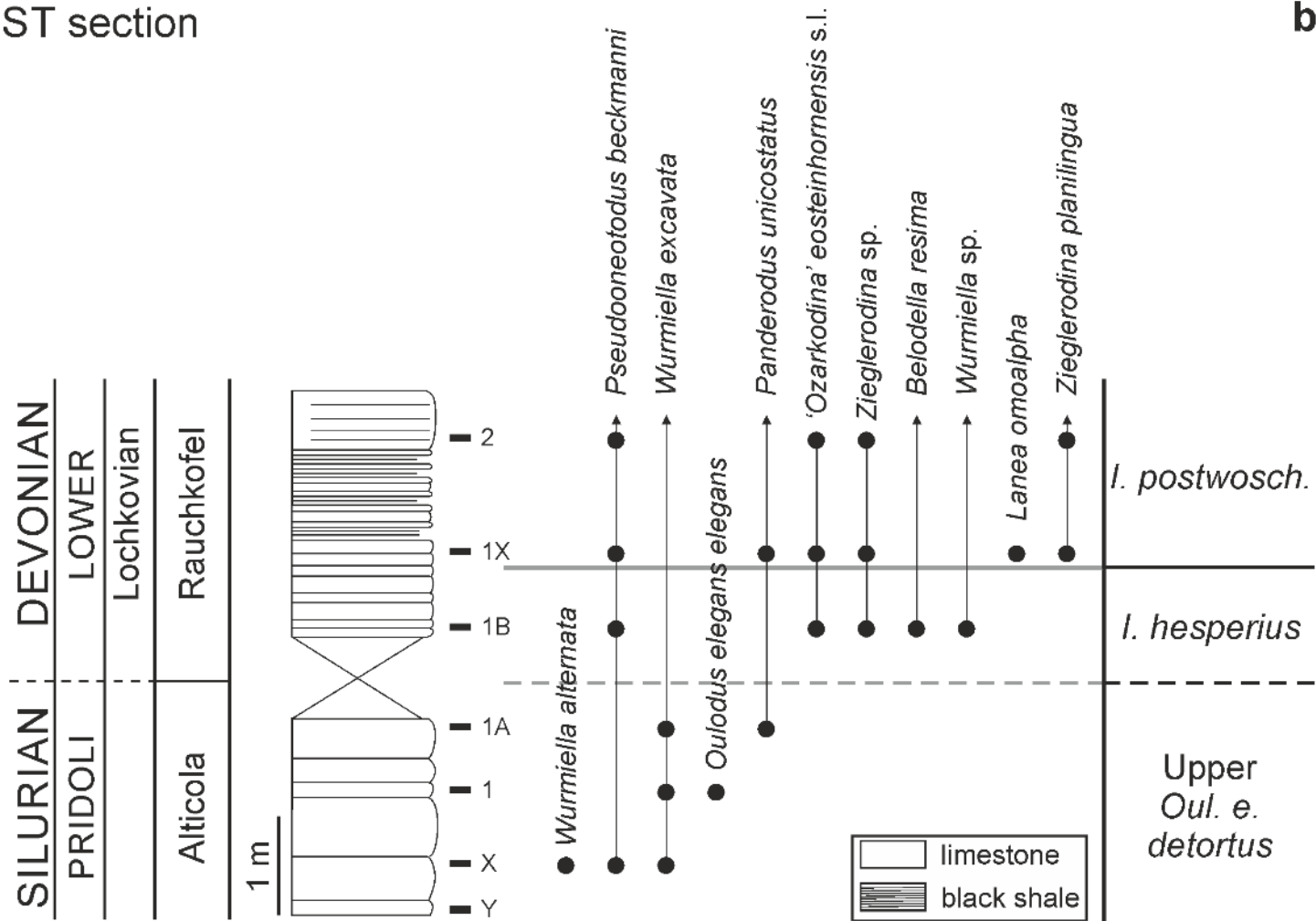
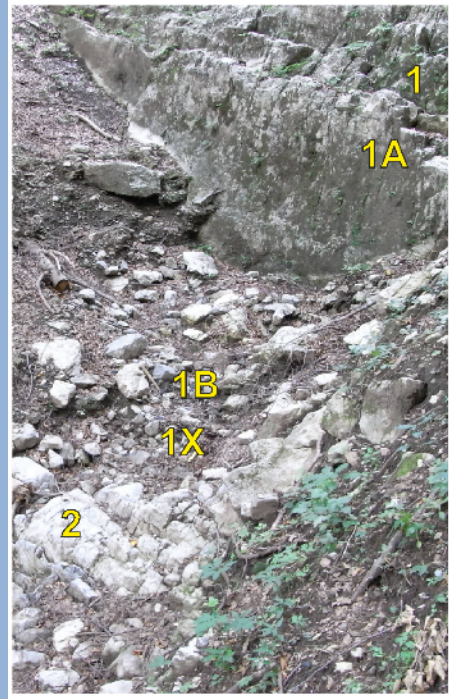


SILURIAN	DEVONIAN
PRIDOLI	LOWER
	Lochkovian
Alticola	Rauchkofel



a

RIO MALINFIER WEST section  
Sector B



b

