

Physics Education

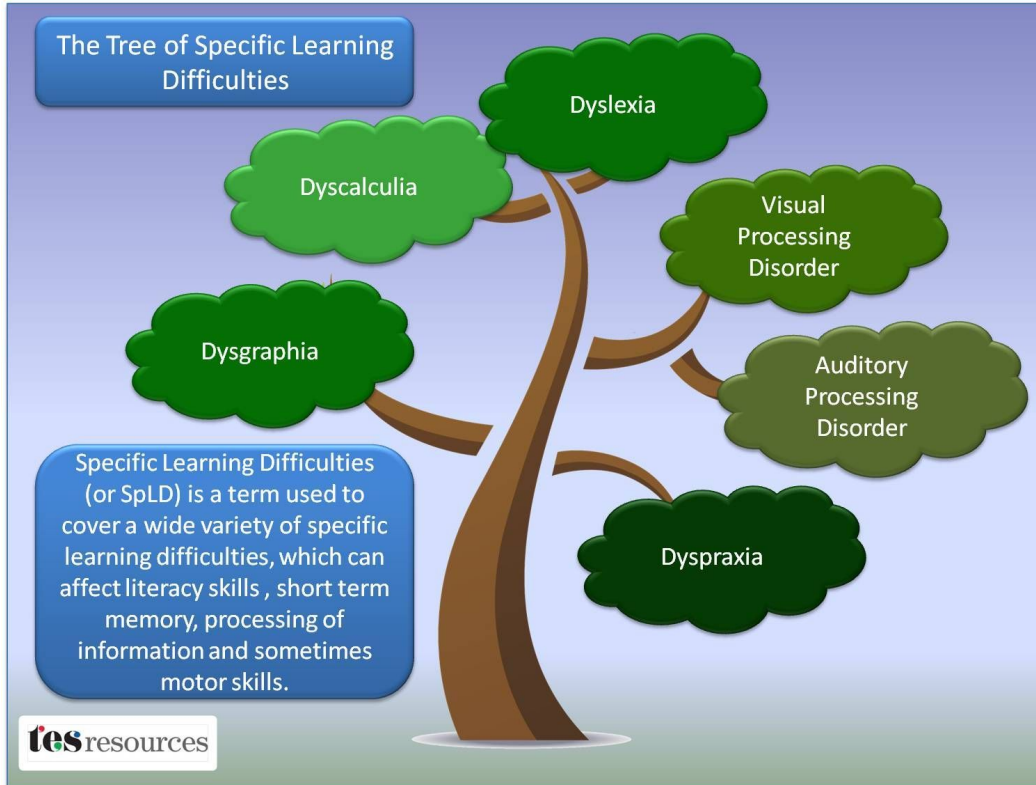
Laboratory

Lecture 16 - 20.11.2024

Learning Disorder in Physics Learning

Valentina Bologna and Francesco Longo

What are specific learning difficulties (DSA – disturbi specifici dell'apprendimento)?



Definition of learning disabilities/disorder →
Disturbo/difficoltà

“Disorder in one or more of the basic psychological processes involved in understanding or in using language, spoken or written, which disorder may manifest itself in the imperfect ability to listen, speak, read, write, spell, or do mathematical calculations.”

Common Types of Learning Disabilities

Dyslexia	Difficulty reading	Problems reading, writing, spelling, speaking
Dyscalculia	Difficulty with math	Problems doing math problems, understanding time, using money
Dysgraphia	Difficulty with writing	Problems with handwriting, spelling, organizing ideas
Dyspraxia (Sensory Integration Disorder)	Difficulty with fine motor skills	Problems with hand-eye coordination, balance, manual dexterity
Dysphasia/Aphasia	Difficulty with language	Problems understanding spoken language, poor reading comprehension
Auditory Processing Disorder	Difficulty hearing differences between sounds	Problems with reading, comprehension, language
Visual Processing Disorder	Difficulty interpreting visual information	Problems with reading, math, maps, charts, symbols, pictures

Specific learning disabilities

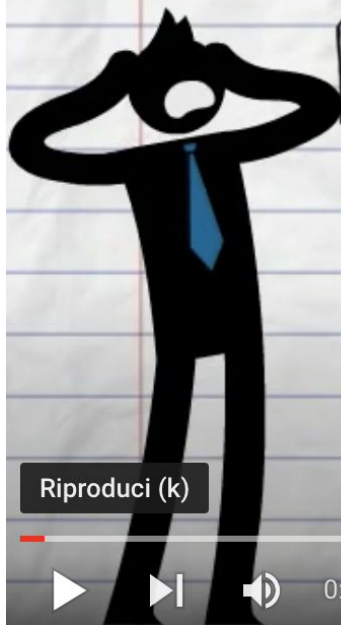
<https://www.youtube.com/watch?v=3nbuYqmX0oY>





<https://www.youtube.com/watch?v=11r7CF1K2sc>

WHAT IS DYSCALCULIA?



Riproduci (k)

CREATED USING
BoToon



0:01 / 1:29



<https://www.youtube.com/watch?v=sGMVF0BvXuY>

Dysgraphia



Riproduci (k)

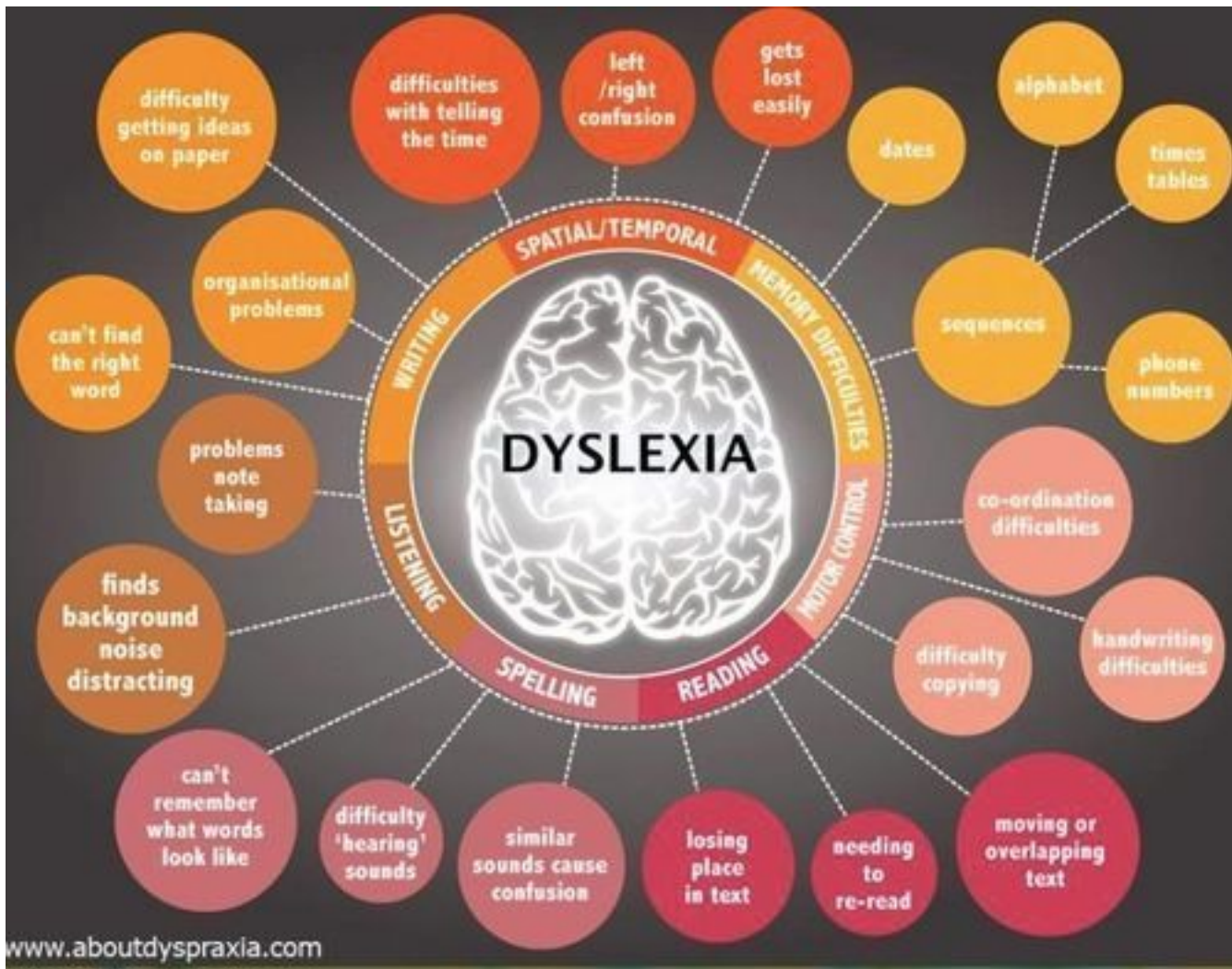
By Brennen Morton

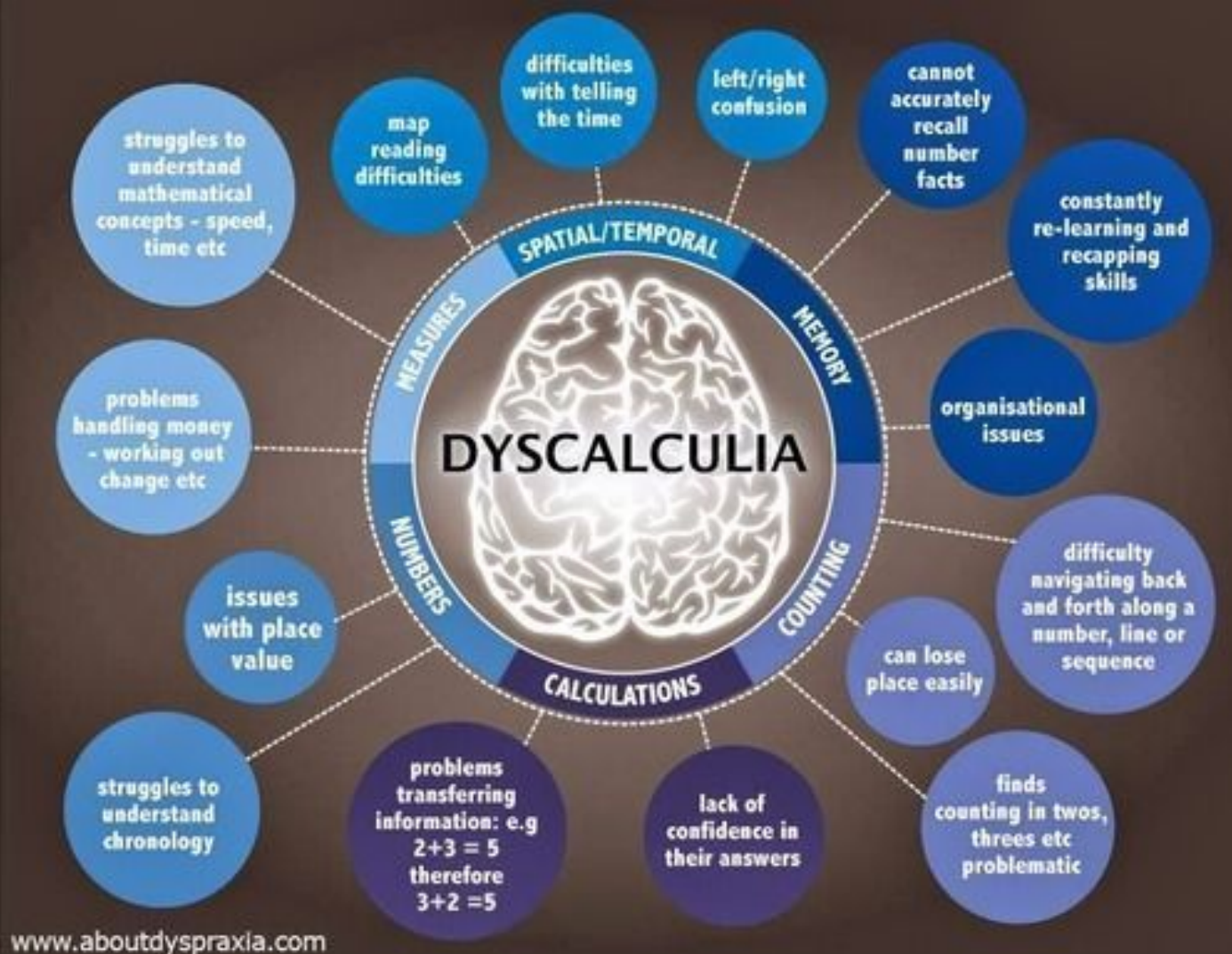


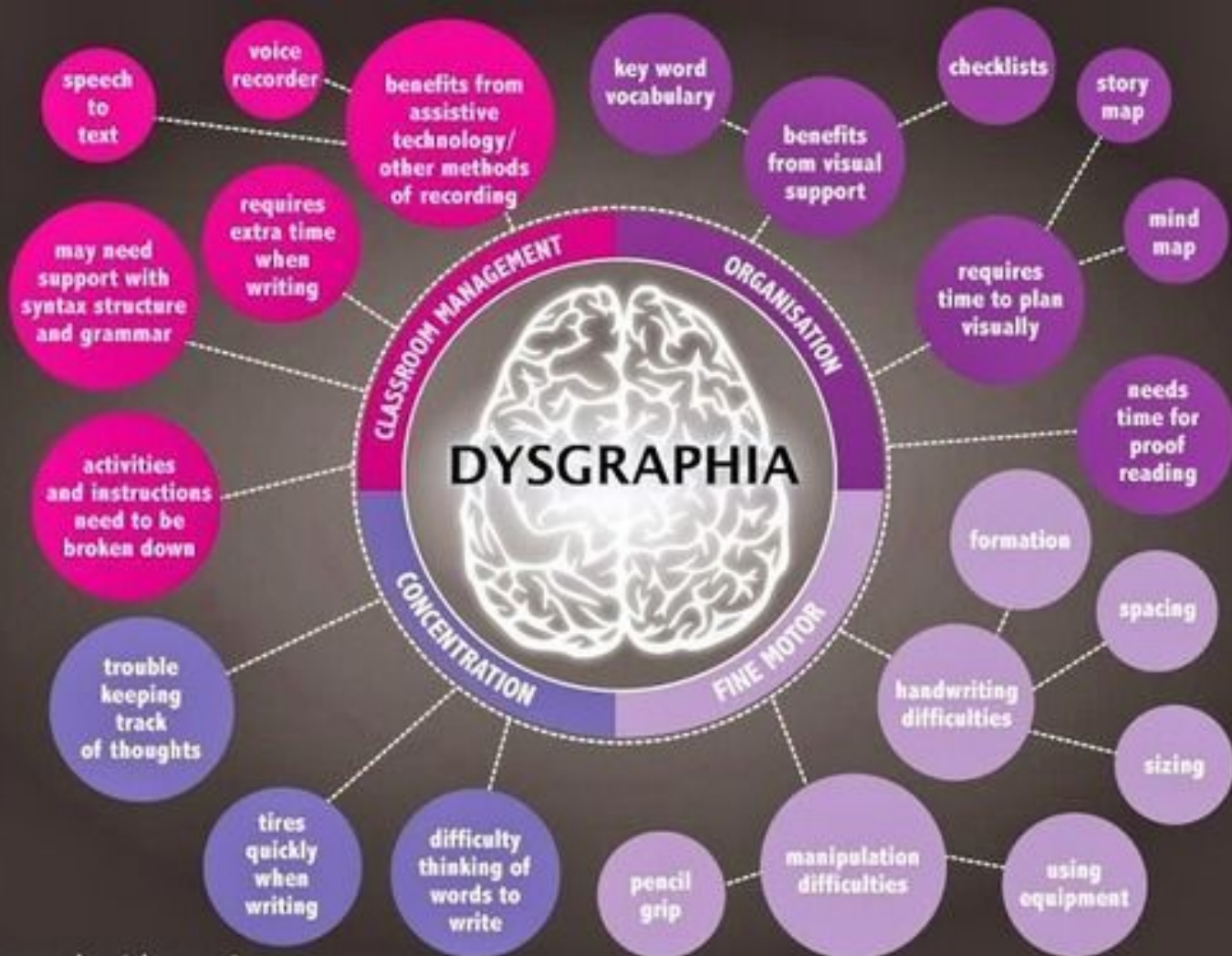
0:03 / 3:14



<https://www.youtube.com/watch?v=9y6ATsA9MWU&t=29s>









<https://www.youtube.com/watch?v=9Wb7vS3k2Lc>

COME PUÒ ESSERE COSÌ DIFFICILE?

Comorbidity in learning disabilities

