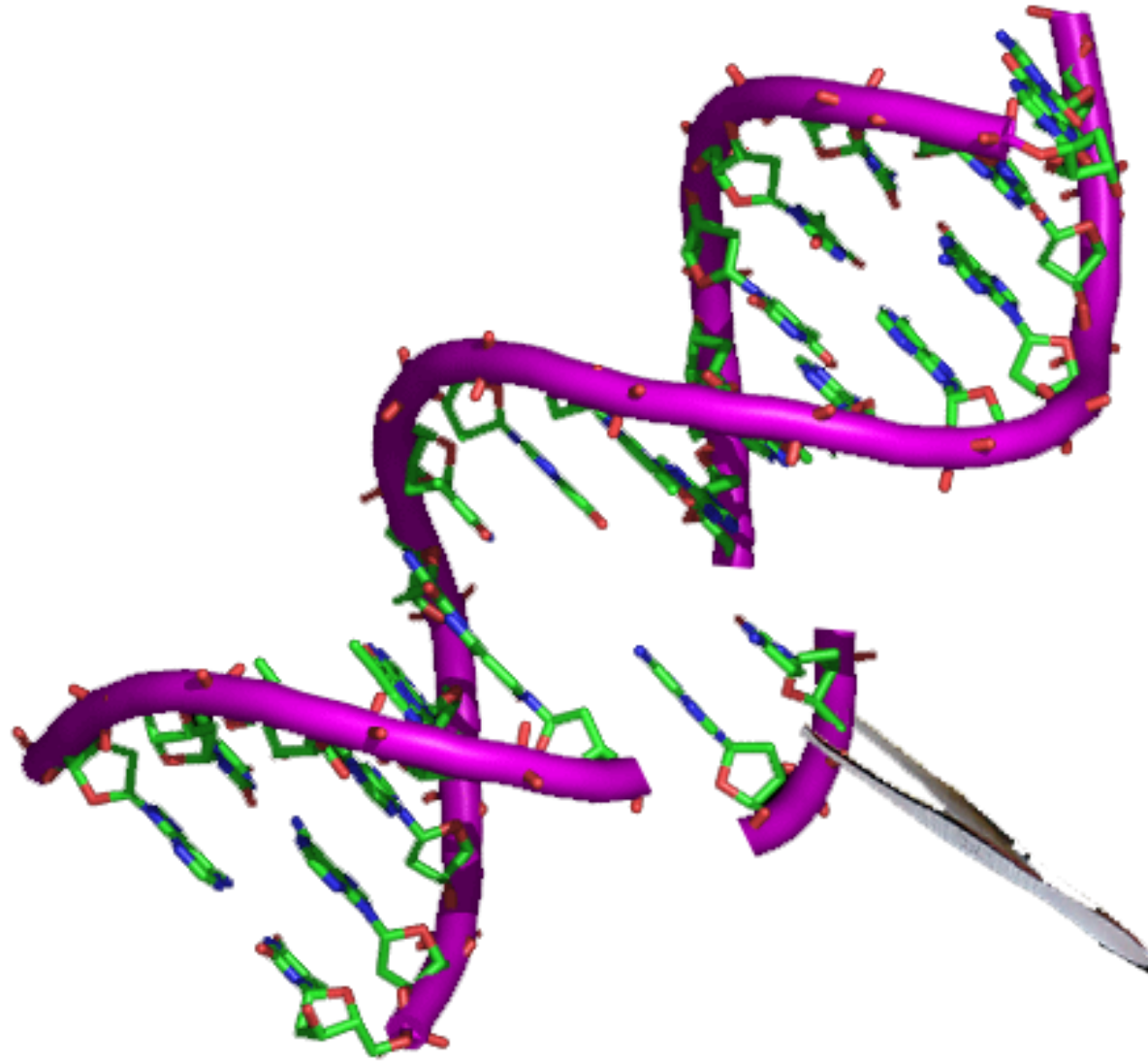


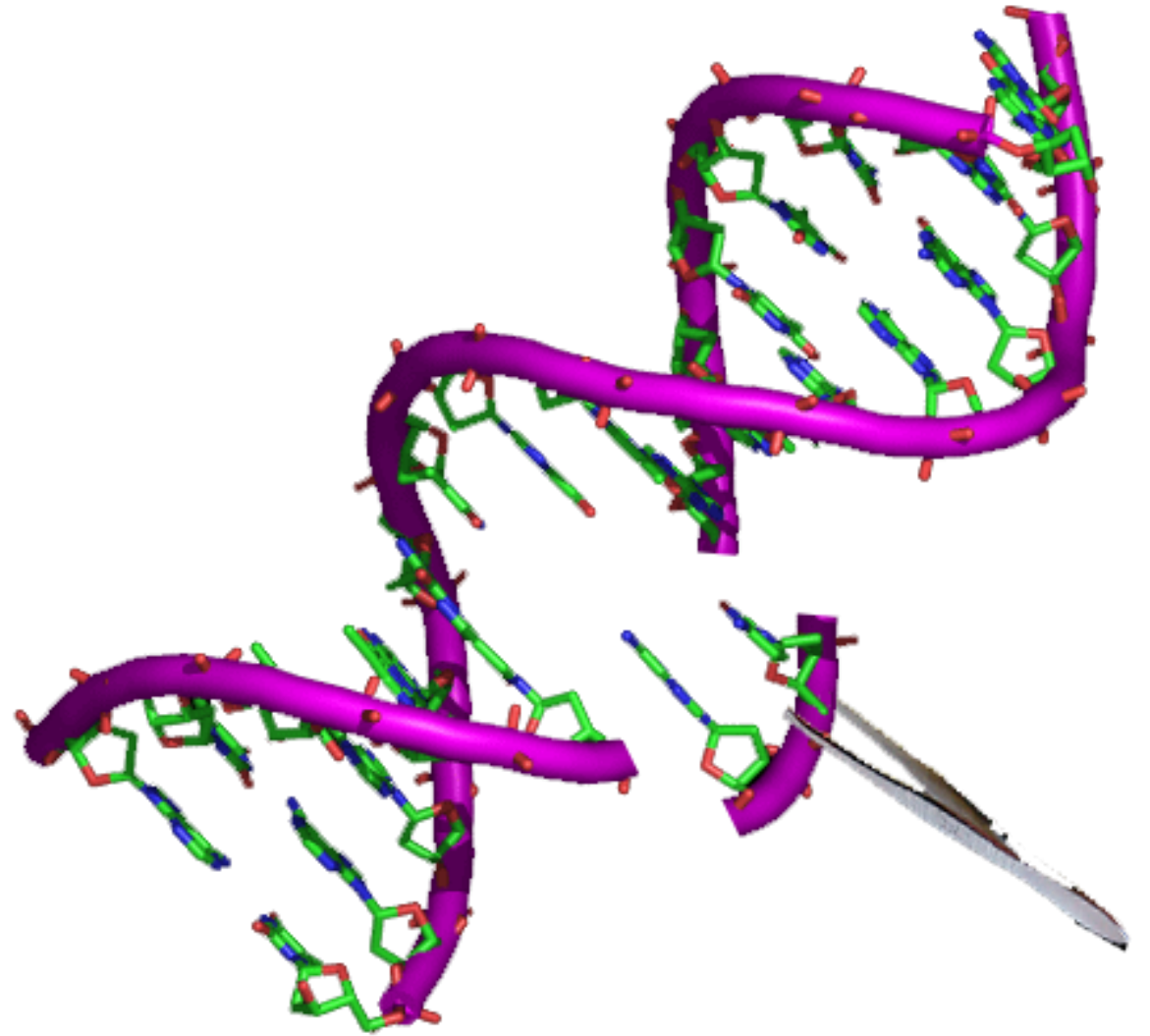
The image features two identical female cyborgs positioned side-by-side. They have pale, human-like skin with visible metallic circuitry and components integrated into their faces and heads. Each has a circular metallic device on top of her head and a small sensor or port on her forehead. Their eyes are a light, golden-brown color. They are wearing white, form-fitting suits with metallic accents at the neck and shoulders. The background is a light gray with a pattern of concentric circles, creating a futuristic and technological atmosphere.

Transhumanism



?

Genetic
engineering –
what is it
exactly?





Genetic engineering (or genetic modification) is a process that alters the DNA makeup of an organism.





Genetic engineering may involve adding a gene from one species to an organism from a different species to produce a desired trait.

Genetic engineering has been applied to the production of cancer therapies, brewing yeasts, genetically modified plants and livestock, and more.



National Human Genome
Research Institute

?





Cryonics - what is it exactly?

Cryonics is defined as the science of **freezing a body shortly after death** with the hope that future advancements in technology and medicine will enable **revival and curing of life-terminating diseases.**

About **500 people** have undergone cryopreservation





Exoskeletons



Prostheses



Orthotics

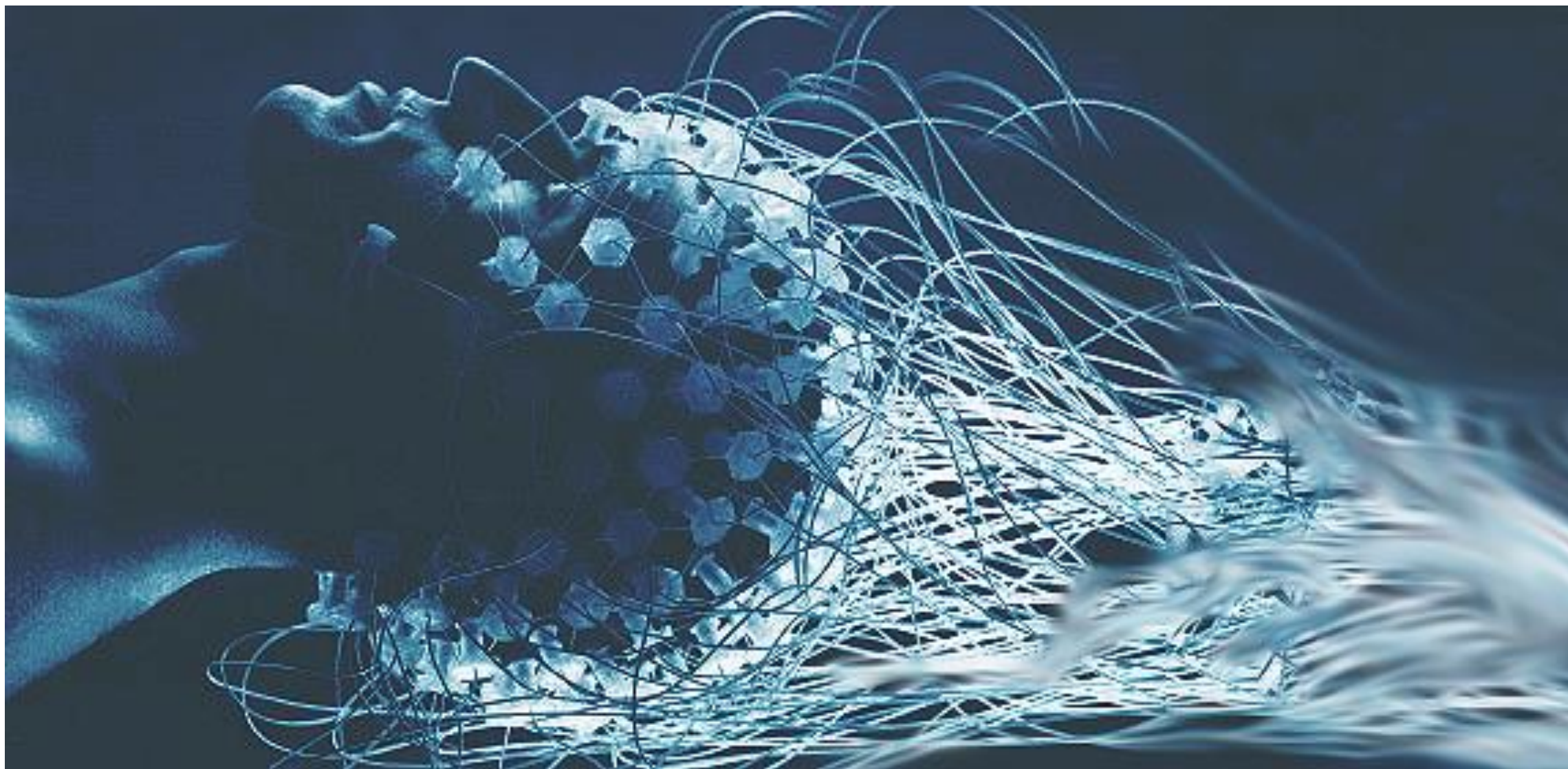


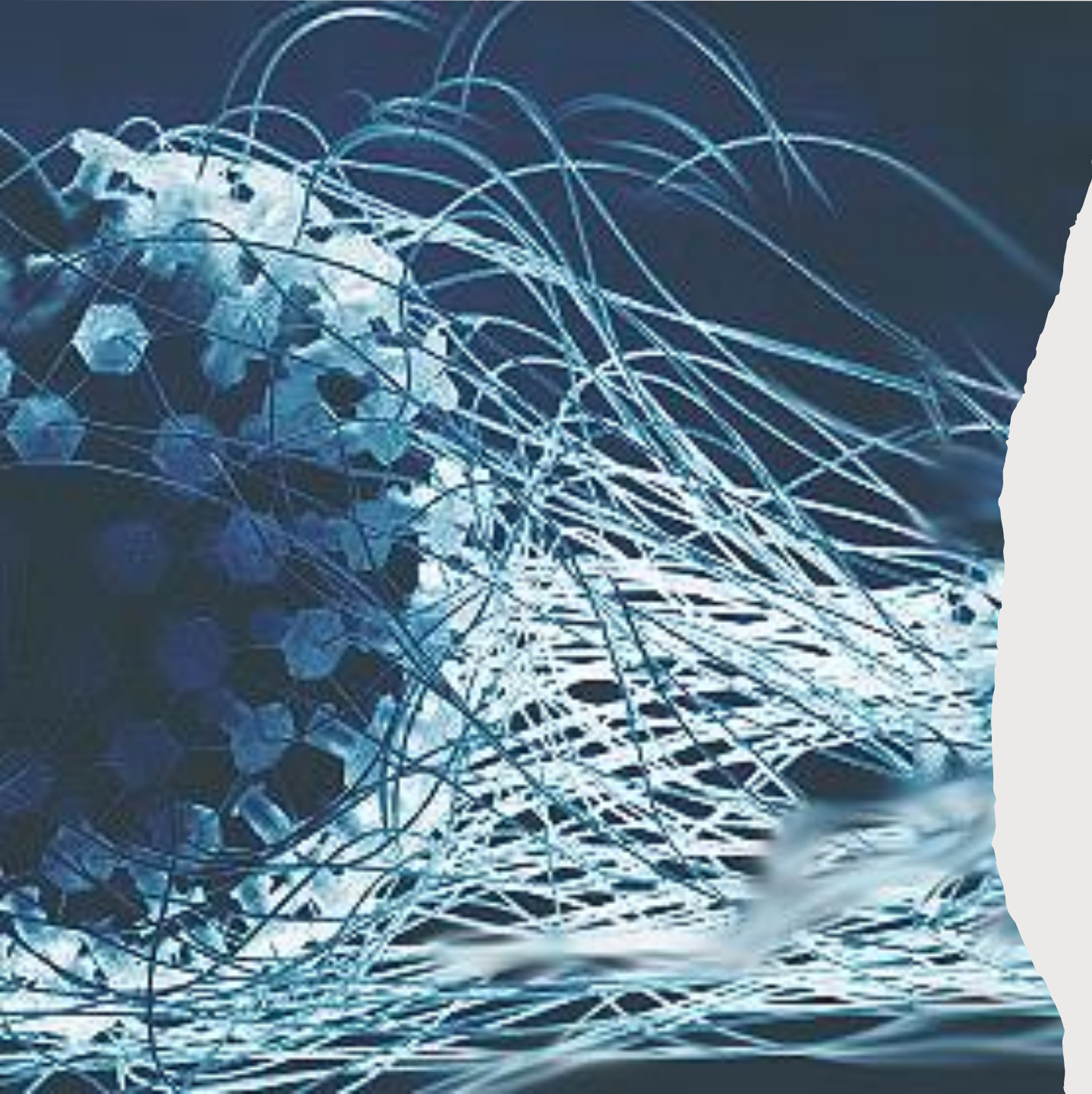
Exoskeletons –
what are they?



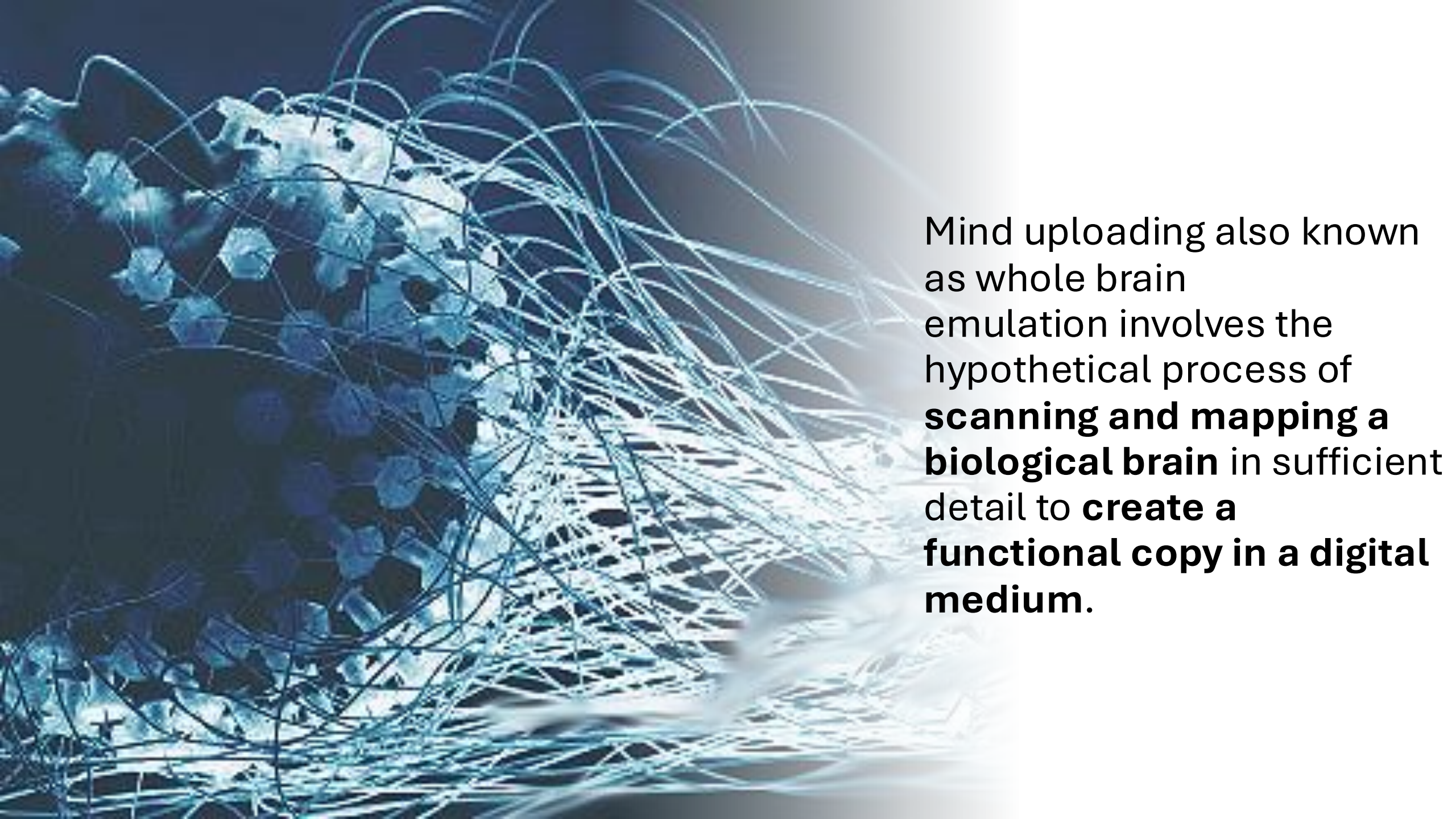
In simple terms, an exoskeleton is a **wearable device** that supports and enhances movement. It acts as an external frame around the body, often powered by motors and sensors, to **help a person move in ways they otherwise couldn't due to injury, illness, or disability.**

Think of it as a high-tech mobility aid—not replacing the person's body but working *with* it.

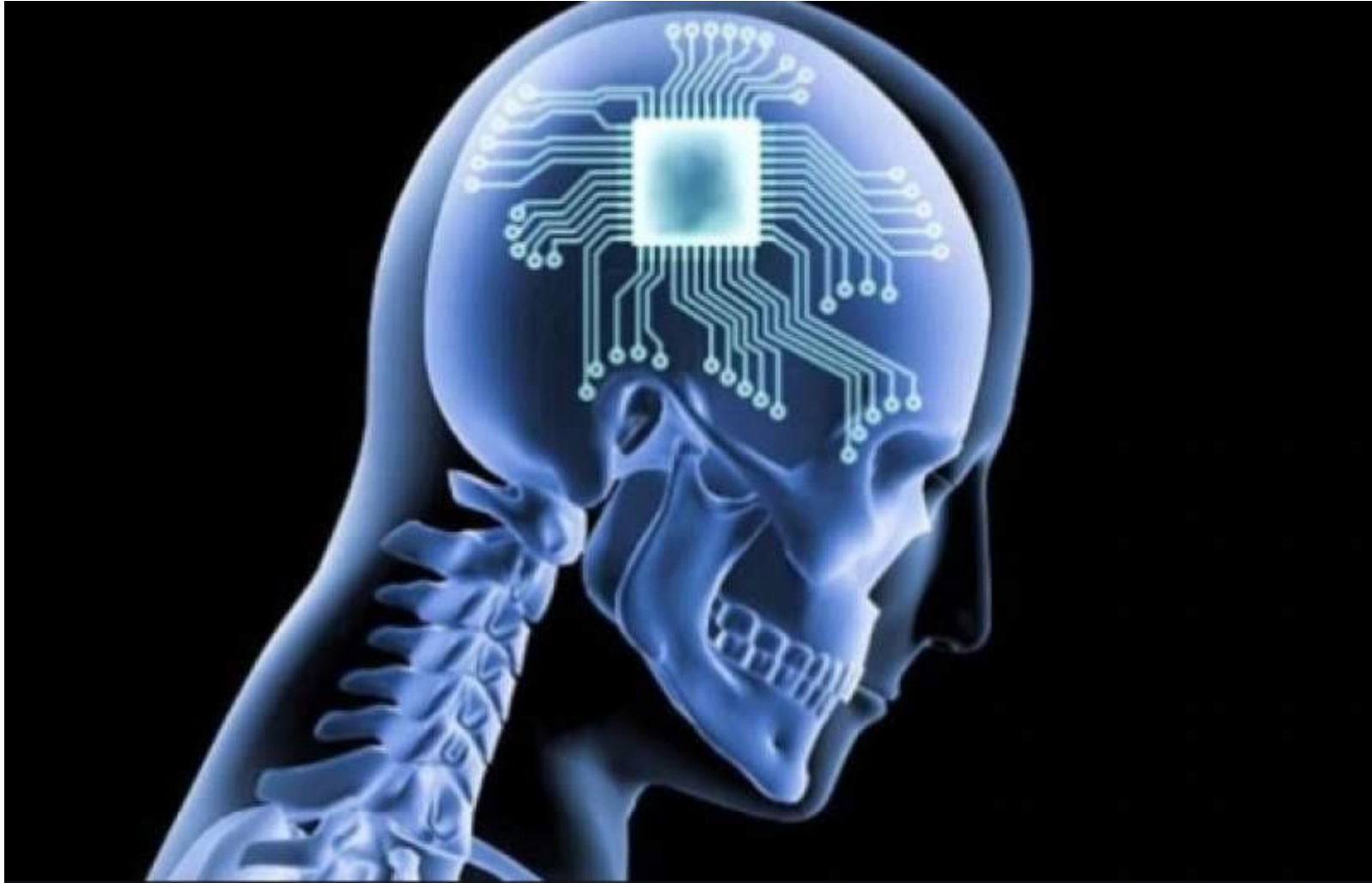




Mind uploading
– what is it?

The background of the slide is an abstract composition. On the left side, there is a dense cluster of blue, semi-transparent hexagonal shapes, some of which are slightly offset from each other, creating a sense of depth. From this cluster, a multitude of thin, white, curved lines radiate outwards towards the right side of the frame. These lines vary in length and curvature, some appearing as straight paths while others are more tangled. The overall color palette is dominated by deep blues and bright whites, set against a dark, almost black, background. The lighting effect is soft, with the white lines and hexagons appearing to glow or be illuminated from within.

Mind uploading also known as whole brain emulation involves the hypothetical process of **scanning and mapping a biological brain** in sufficient detail to **create a functional copy in a digital medium.**



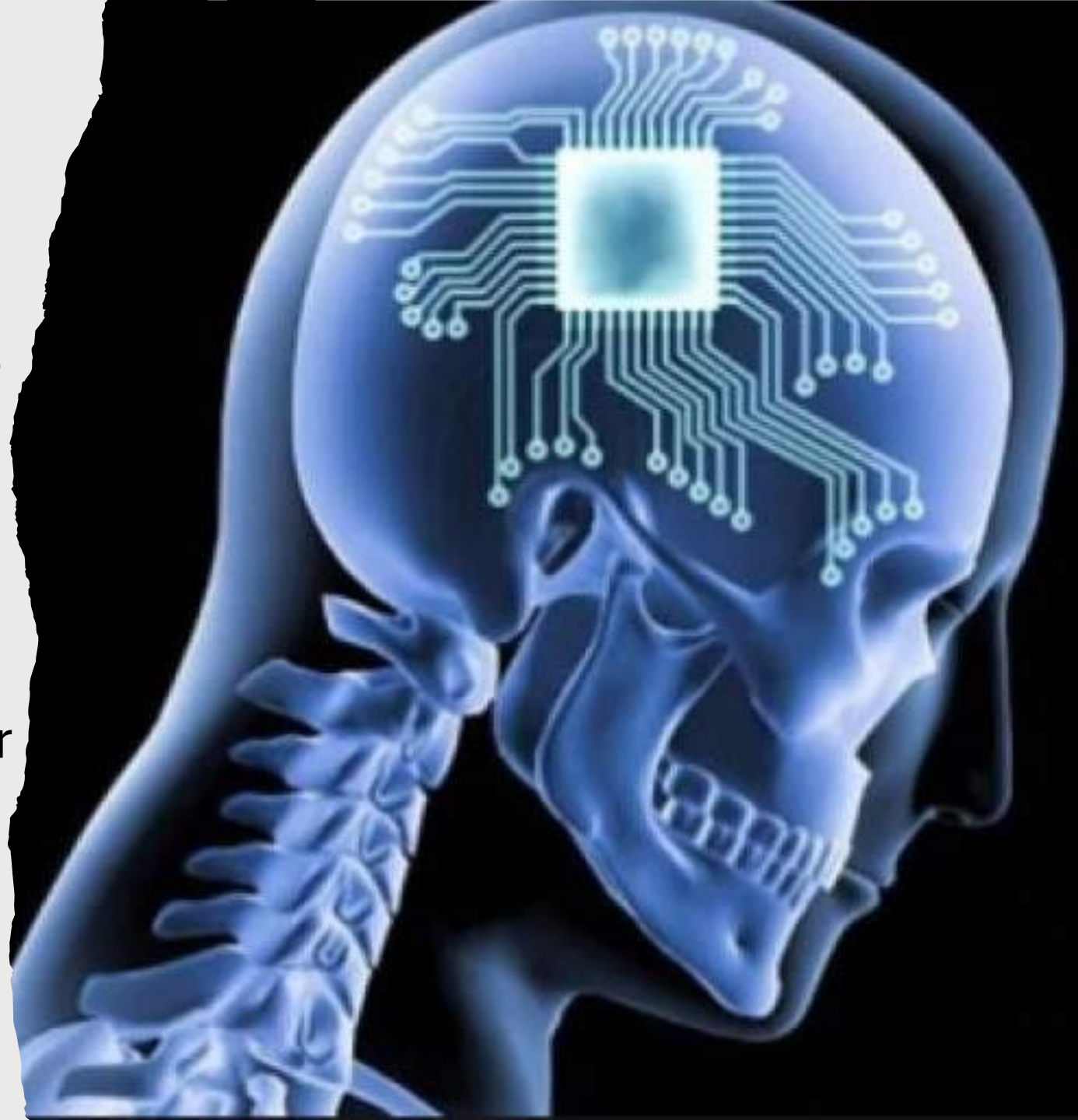
?

Brain-implanted
chips – what are
they?



The applications of brain-implanted chips promise transformative impacts across **healthcare, cognitive enhancement, and communication**, with potential in the treatment of neurological disorders such as **Parkinson's disease** and **epilepsy** by directly modulating neural activity.

Brain-implanted chips also offer exciting prospects for **cognitive enhancements**, including enhancing **memory retention** and **accelerating learning processes**.



Which **excites** you the most and which **worries** you?

Do you know of any recent **developments** or **breakthroughs**?

