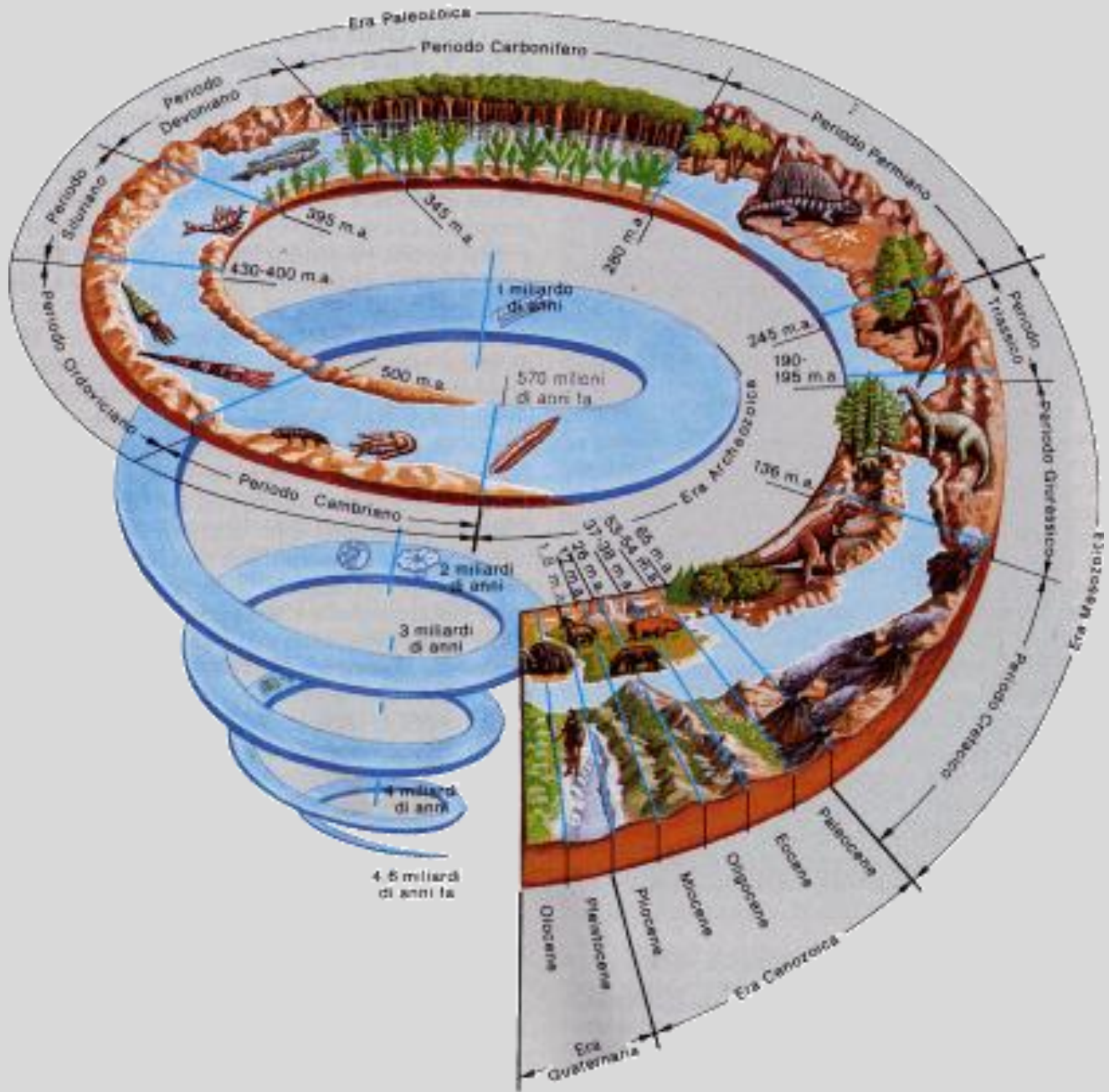
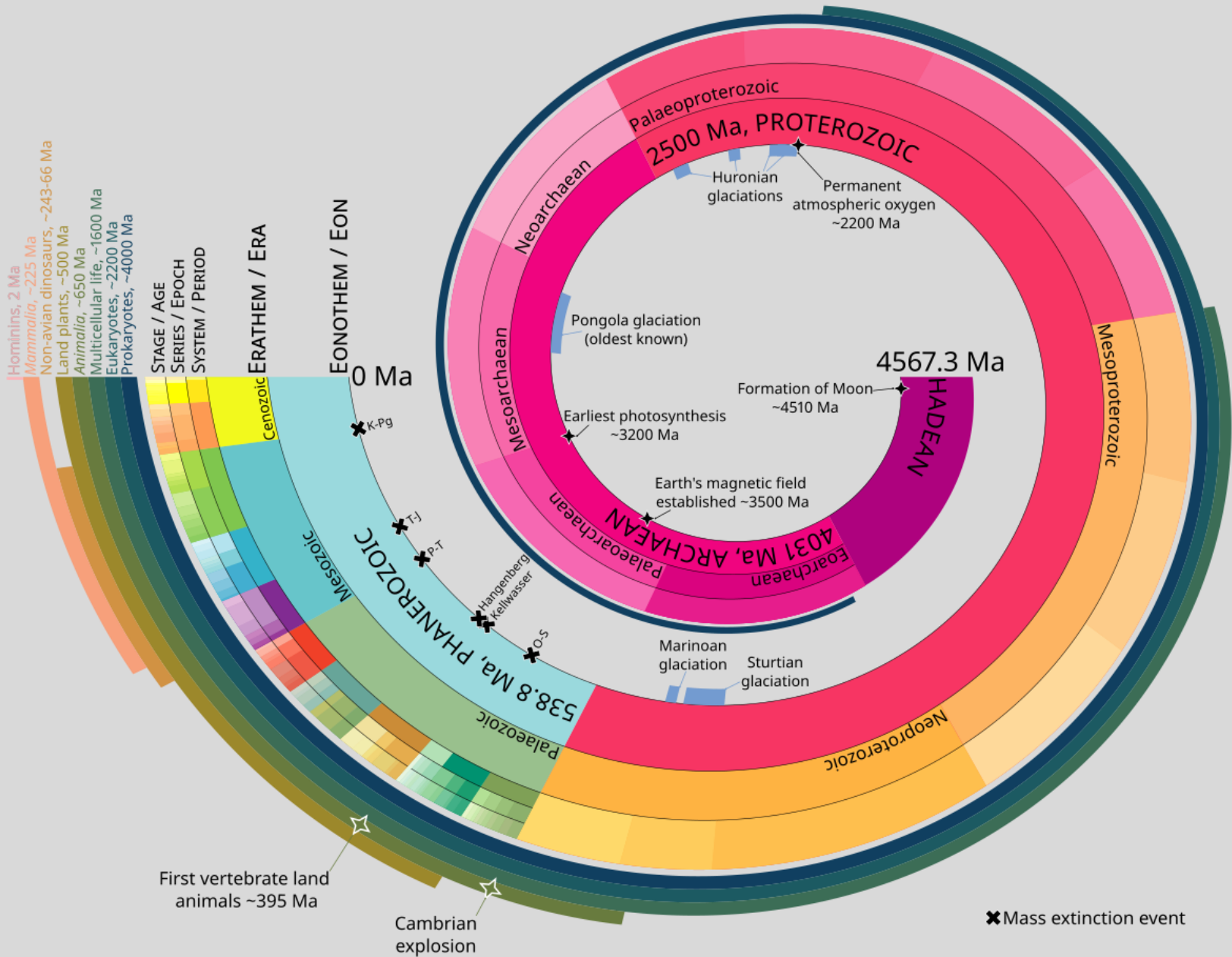


Cenni sulla storia della vita sulla terra



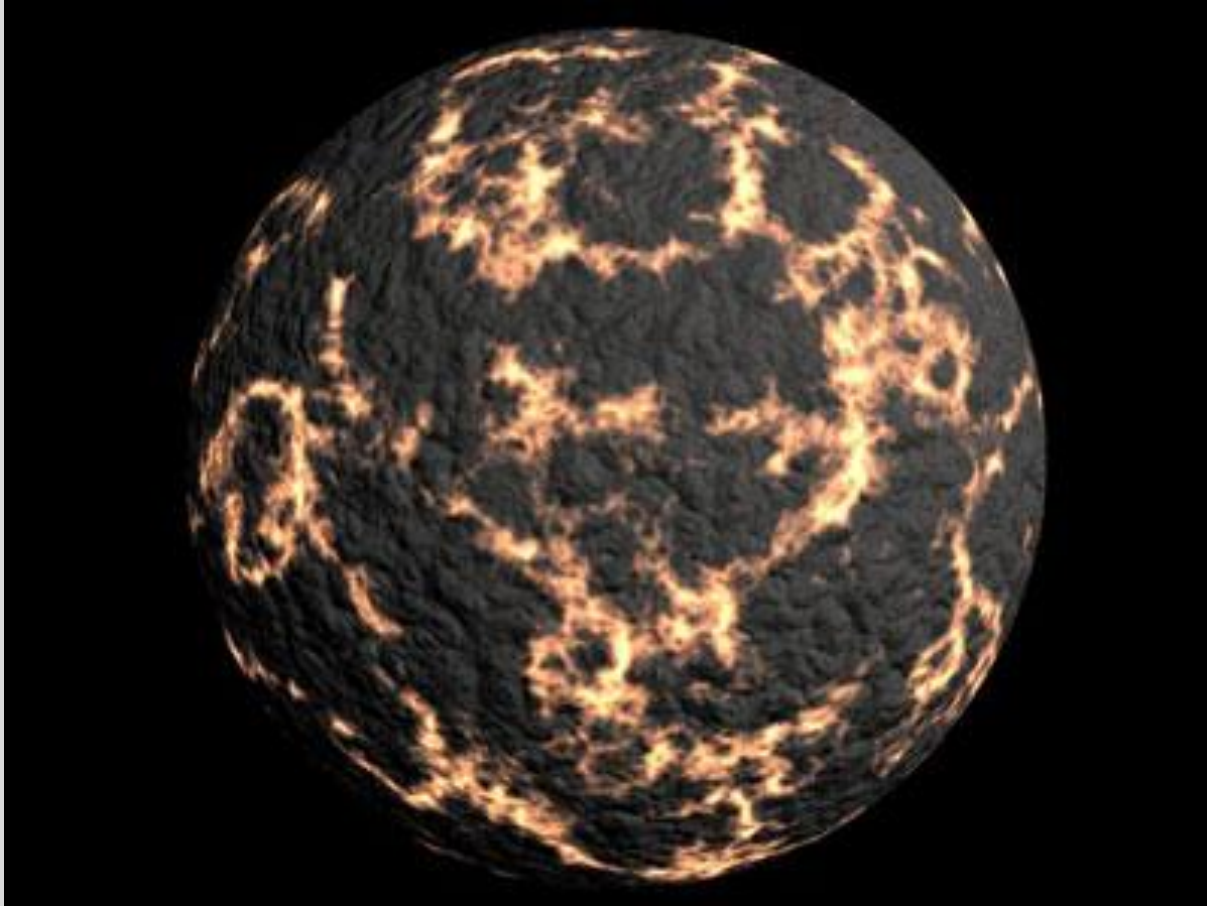


Oggi

Formazione della Terra

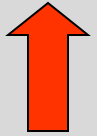


4500 Ma circa



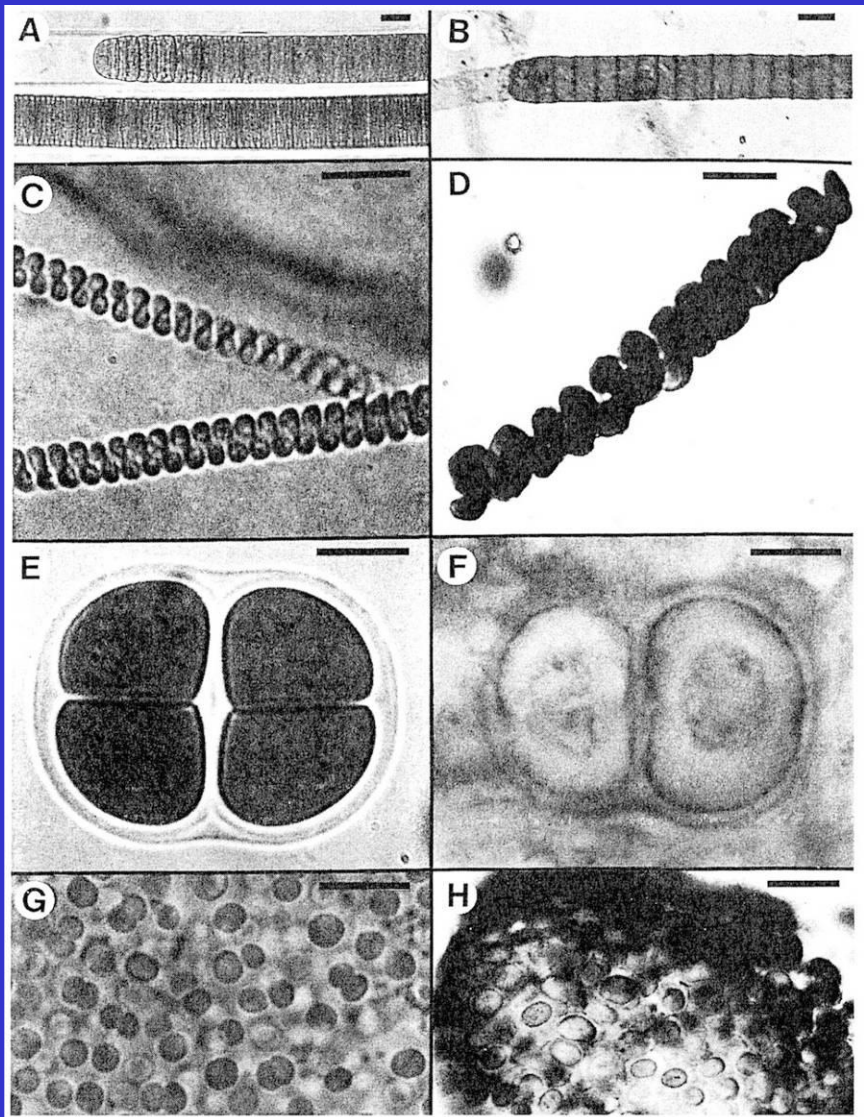
Oggi

Formazione della Terra

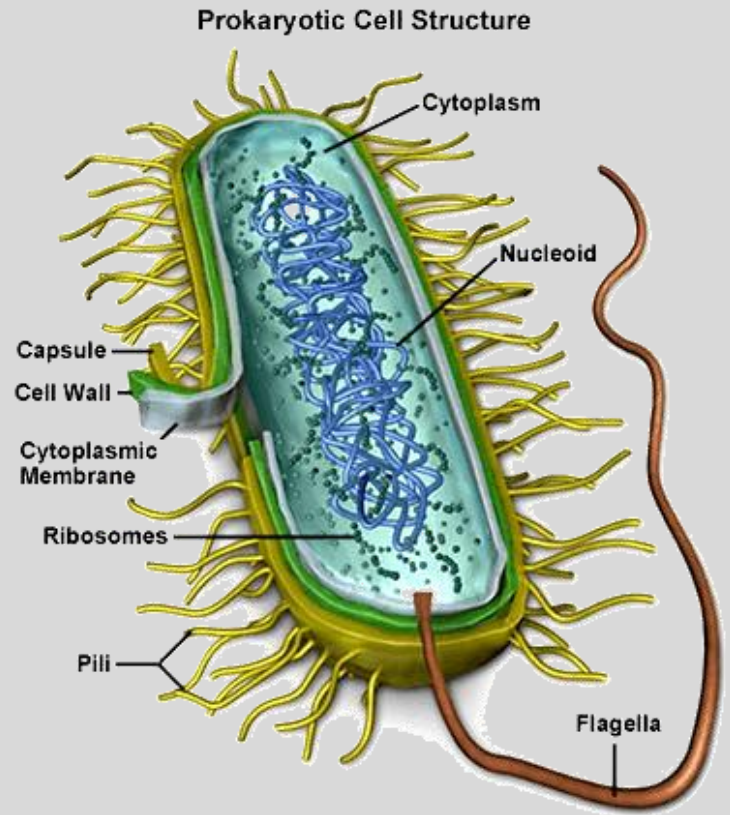


attuali

fossili

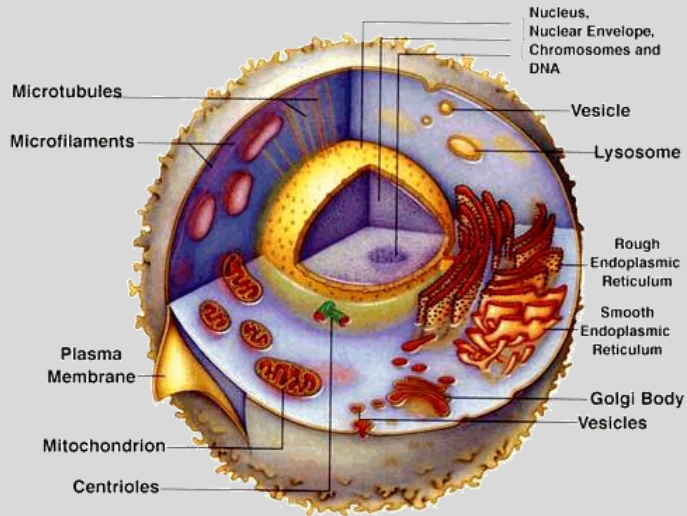


4000 Ma circa
I Procarioti

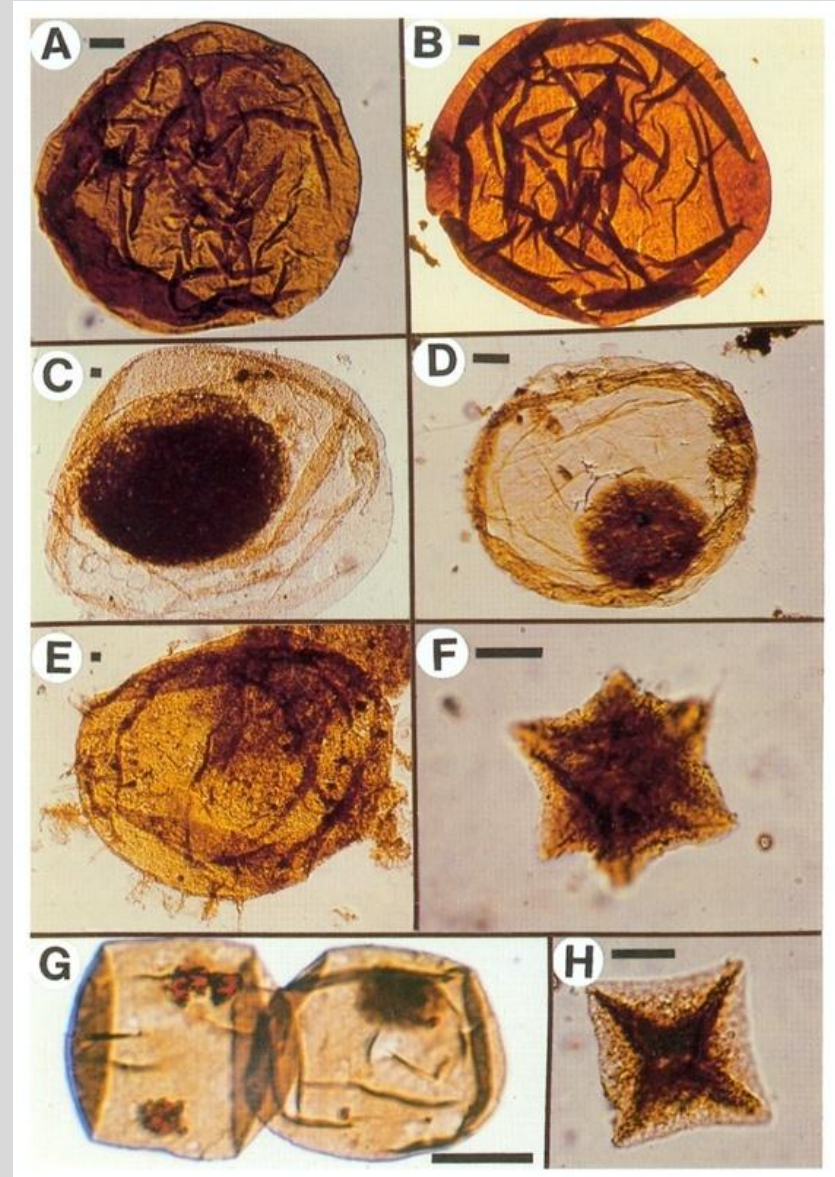


Oggi

Formazione della Terra



2000 Ma circa
Gli Eucarioti

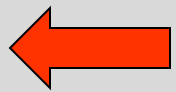


Formazione della Terra

Oggi



Dimensioni = 2-8 cm



750 Ma circa
Pluricellulari



Oggi

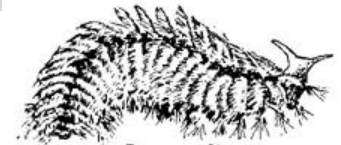
Formazione della Terra



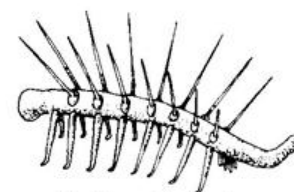
Pikaia



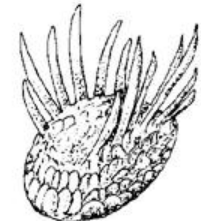
Opabinia



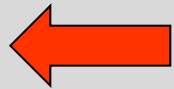
Canadia



Hallucigenia



Wiwaxia



570 Ma circa
Pluricellulari
biomineralizzati

Oggi

Formazione della Terra

Vita precellulare

Procarioti

Eucarioti uncellulari

Eucarioti pluricellulari

I primi 4 miliardi di anni circa della storia della vita sono stati "occupati" da ciò che abbiamo visto finora.

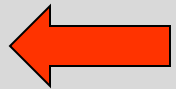
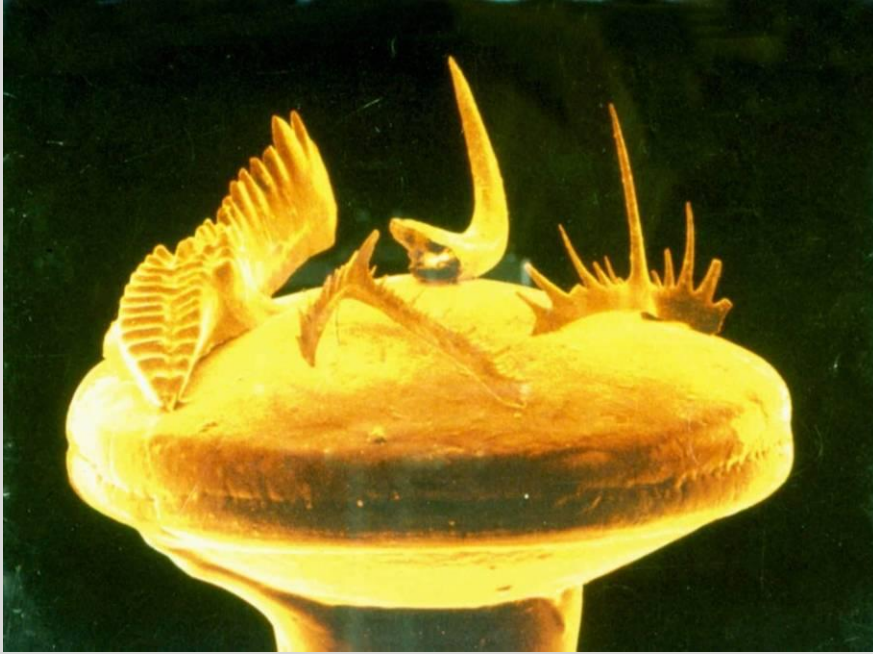
Oggi

Formazione della Terra

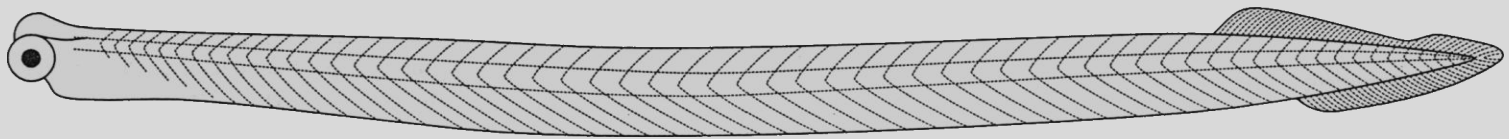
Era or eon	Period or Epoch	Age (in millions of years)		
Caenozoic	Quaternary	Holocene	0	
		Pleistocene	0.01	
	Neogene	Pliocene	2.6	
		Miocene	5	
		Oligocene	23	
		Eocene	34	
		Palaeogene	Palaeocene	55
				65
Mesozoic	Cretaceous			
		145		
	Jurassic			
		200		
	Triassic			
		250		
Palaeozoic	Permian			
		300		
	Carboniferous			
		360		
	Devonian			
		415		
	Silurian			
	445			
	Ordovician			
		490		
	Cambrian			
		550		
Proterozoic	Precambrian <i>(the Precambrian era accounts for more than 85% of the Earth's history)</i>	2,500		
Archaean		4,000		
Hadean		4,600		

Formazione della Terra

Oggi



520 Ma circa
I primi vertebrati

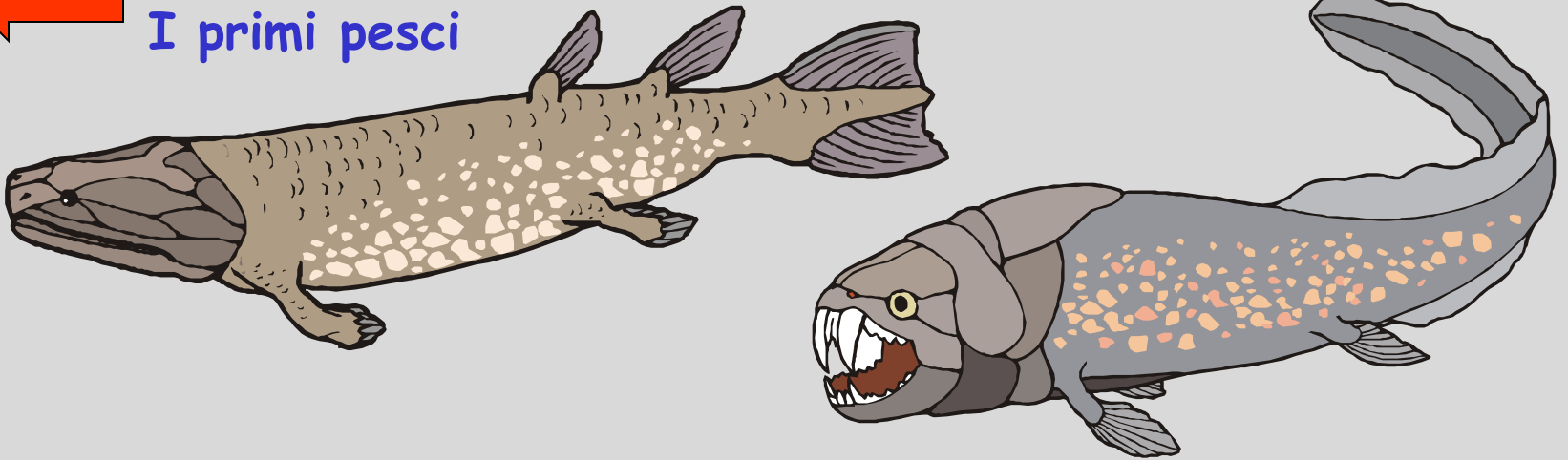
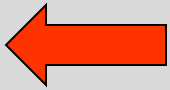


Formazione della Terra

Oggi

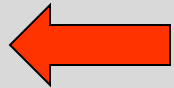
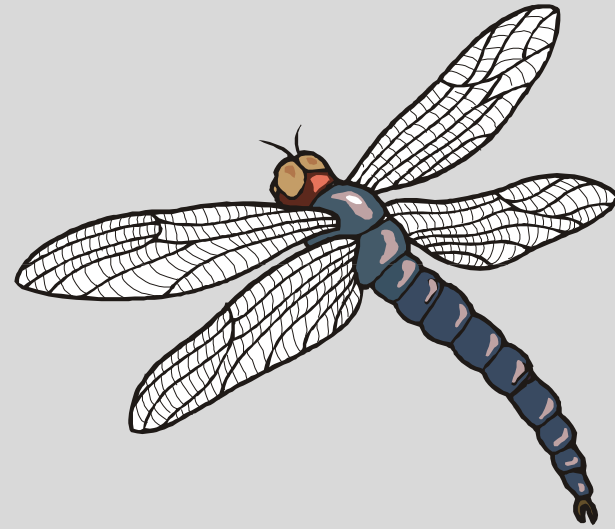
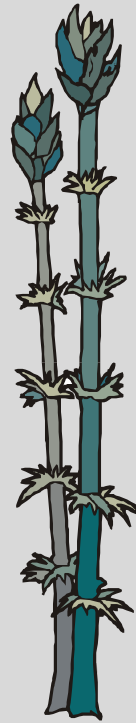
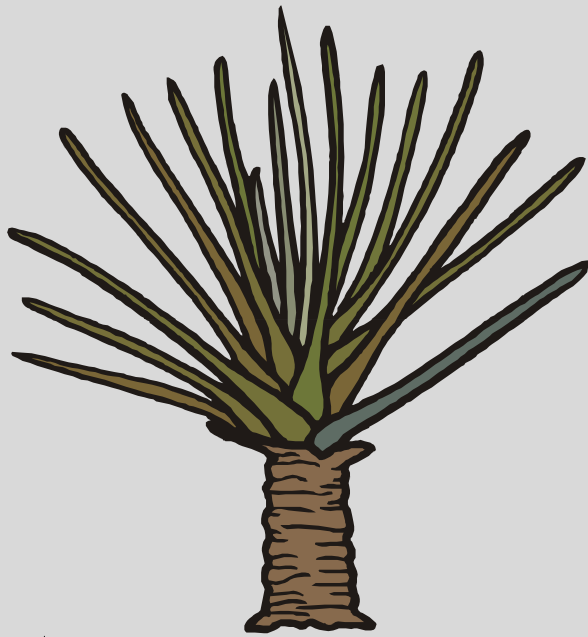


450 Ma circa
I primi pesci



Oggi

Formazione della Terra



410 Ma circa

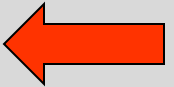
Le piante conquistano la
terraferma

Seguite, poco dopo, dagli insetti

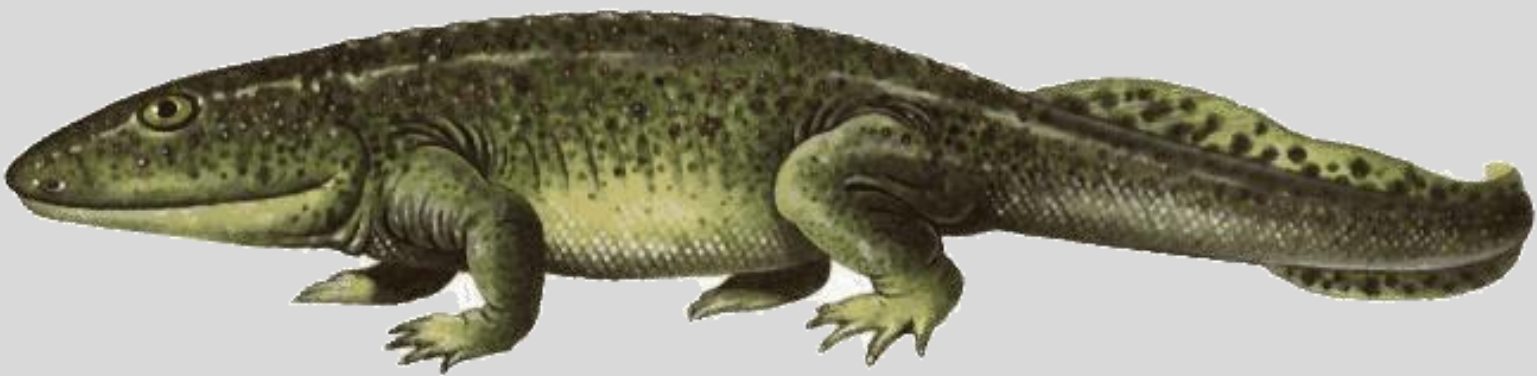


Formazione della Terra

Oggi



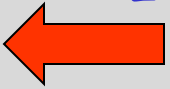
350 Ma circa
I primi anfibi



Formazione della Terra

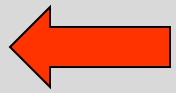
Oggi

310 Ma circa
I primi rettili

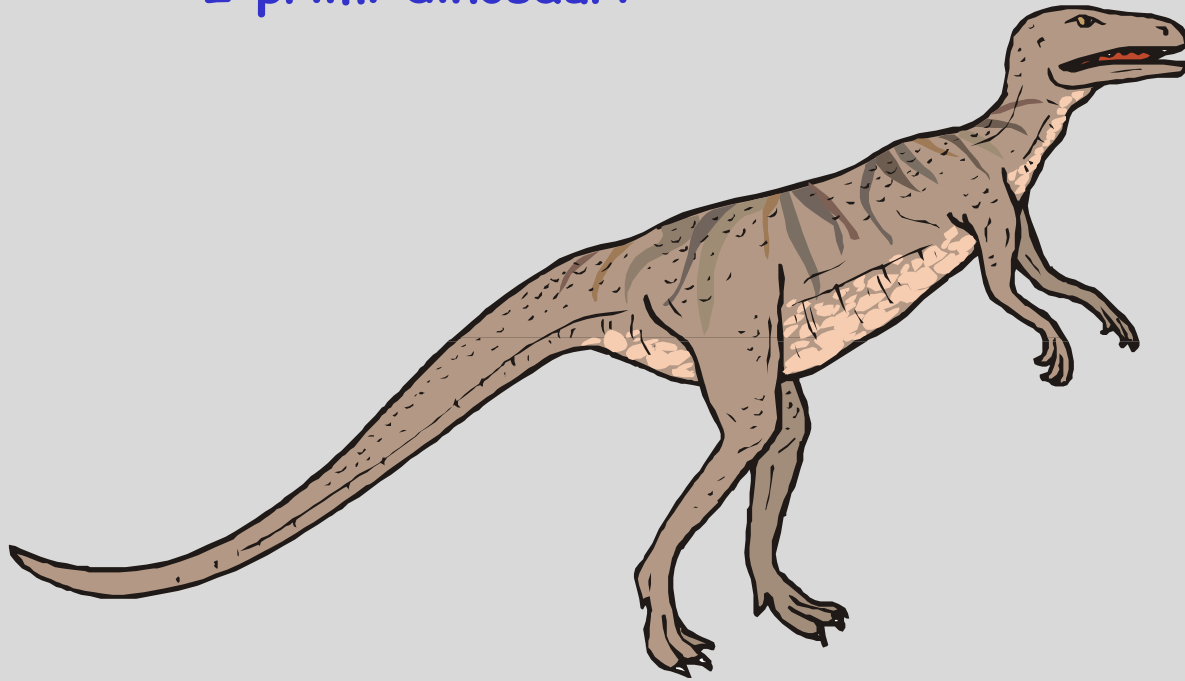


Oggi

Formazione della Terra

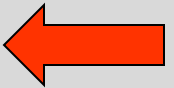


230 Ma circa
I primi dinosauri

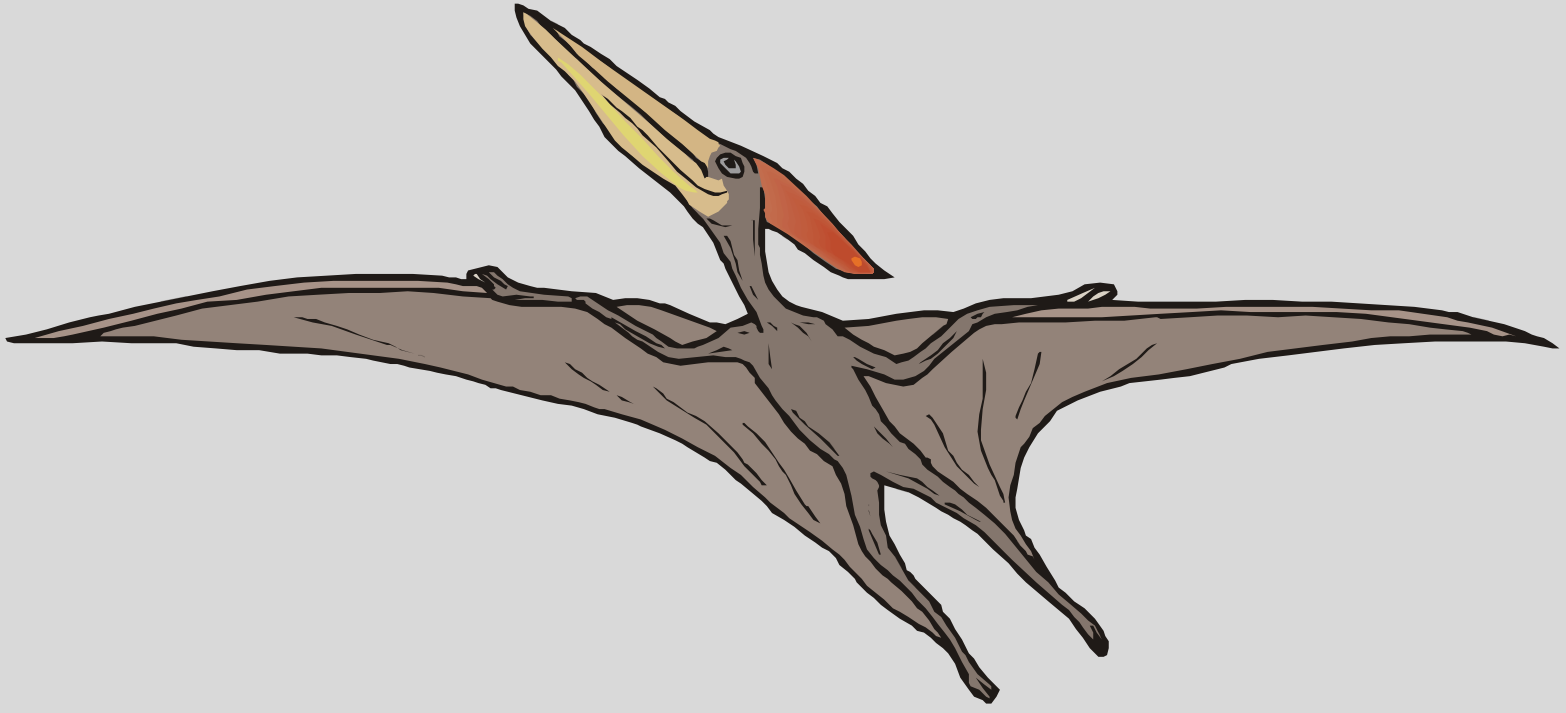
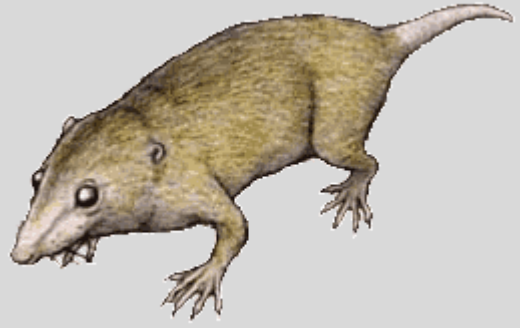


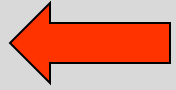
Formazione della Terra

Oggi

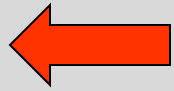


200 Ma circa
I primi mammiferi
I rettili volanti



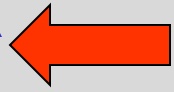


140 Ma circa
I primi uccelli



135 Ma circa
L'esplosione delle piante con fiori





6 Ma circa
I primi ominidi

