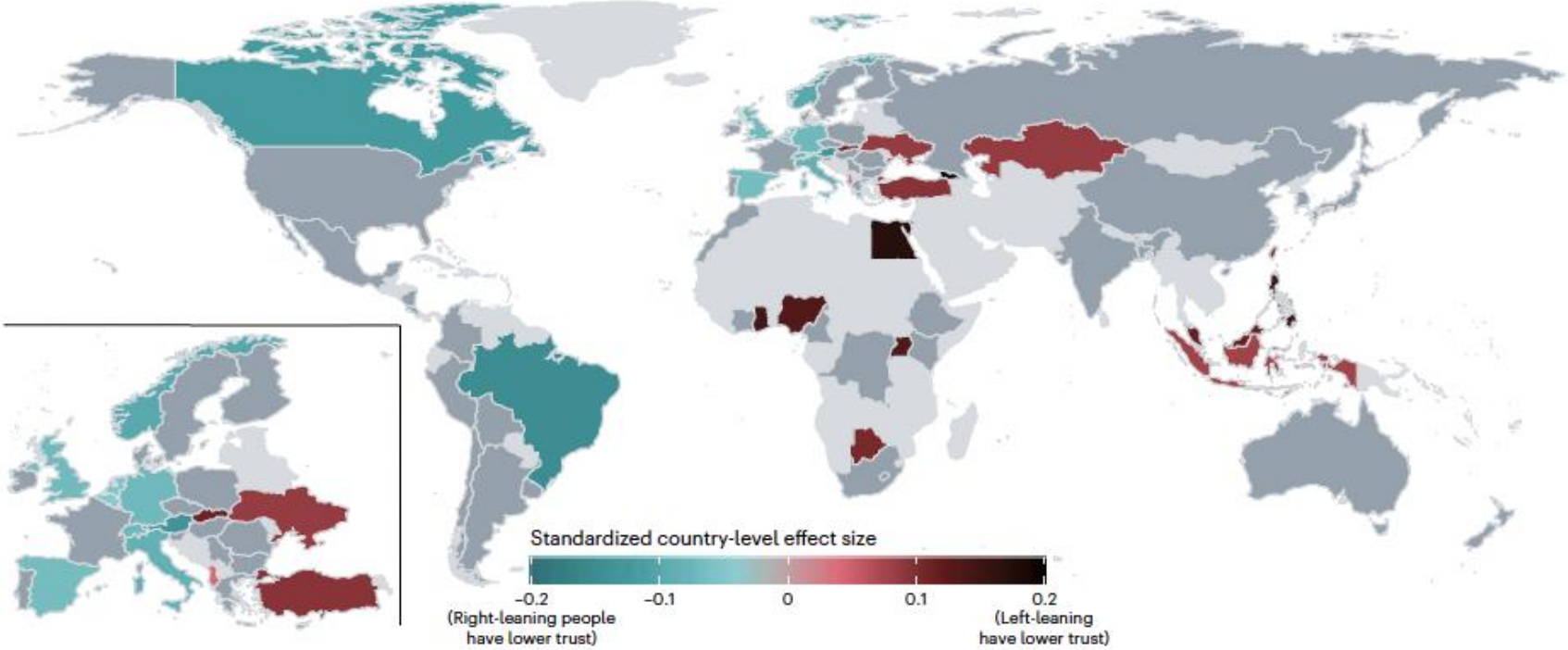

WHO IS THE SCIENTIST WE COMMUNICATE

CRASC - 11/03/2026

TRUST IN SCIENTISTS AND THEIR ROLE IN SOCIETY ACROSS 68 COUNTRIES (2024)

a Country-level effects of right-leaning political orientation and trust in scientists

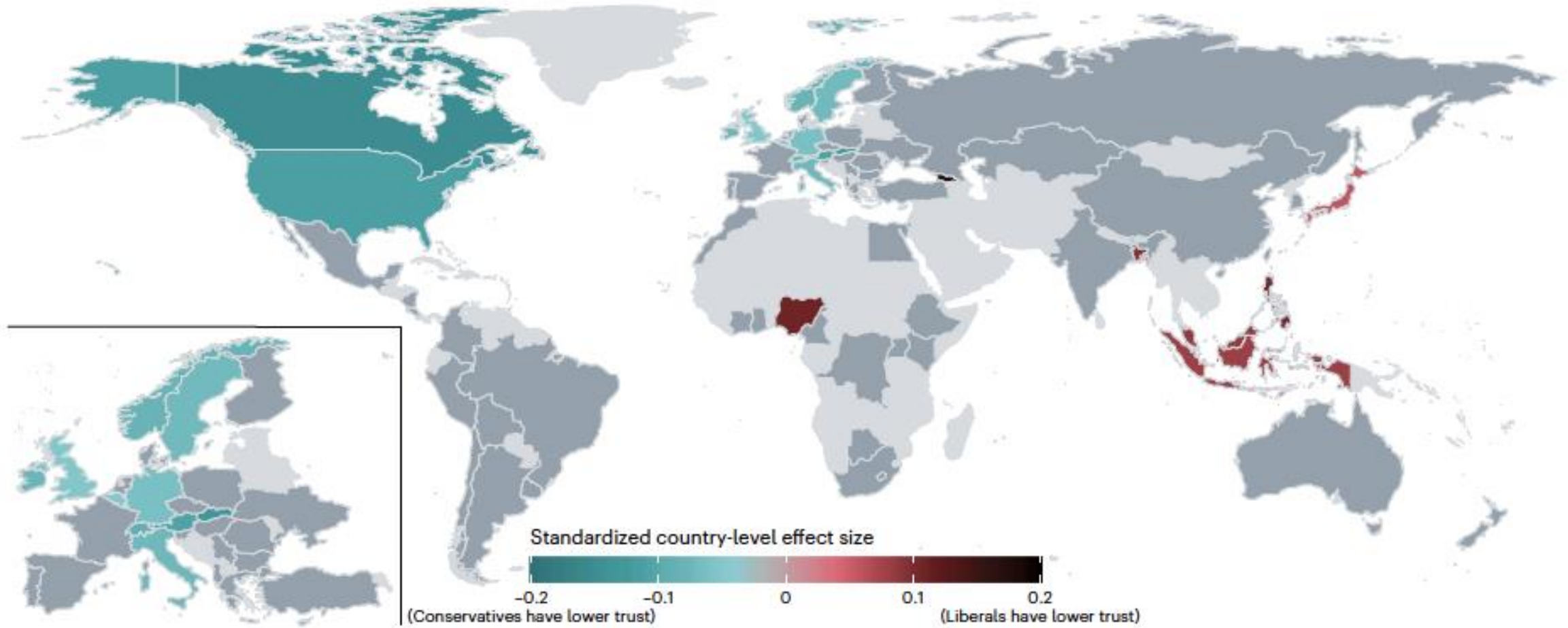


A,B, STANDARDIZED COUNTRY-LEVEL EFFECTS OF POLITICAL ORIENTATION (IN A, 1 = STRONGLY LEFT-LEANING TO 5 = STRONGLY RIGHT-LEANING; IN B, 1 = STRONGLY LIBERAL TO 5 = STRONGLY CONSERVATIVE) ON TRUST IN SCIENTISTS (1 = VERY LOW, 3 = NEITHER HIGH NOR LOW, 5 = VERY HIGH).

These effects are sums of the grand effect for political orientation across all countries and the random effect within each country; they were estimated with weighted linear multilevel regressions that contained random intercepts and random slopes for political orientation (left–right in a and liberal–conservative in b) across countries. These models control for demographic characteristics.

Two-sided t-tests of the estimates used percentile bootstrapping. Countries with significant country-level effects ($P < 0.05$) are displayed in colours. Countries coloured in shades of blue show a positive country-level association of left-leaning (a) or liberal (b) orientation and trust in scientists (that is, right-leaning people or conservatives have lower trust). Countries coloured in shades of red show a positive country-level association of right-leaning (a) or conservative (b) orientation and trust in scientists (that is, left-leaning people or liberals have lower trust). Countries with non-significant effects are shaded in dark cyan. Countries with no available data are shaded in light grey.

b Country-level effects of conservative political orientation and trust in scientists



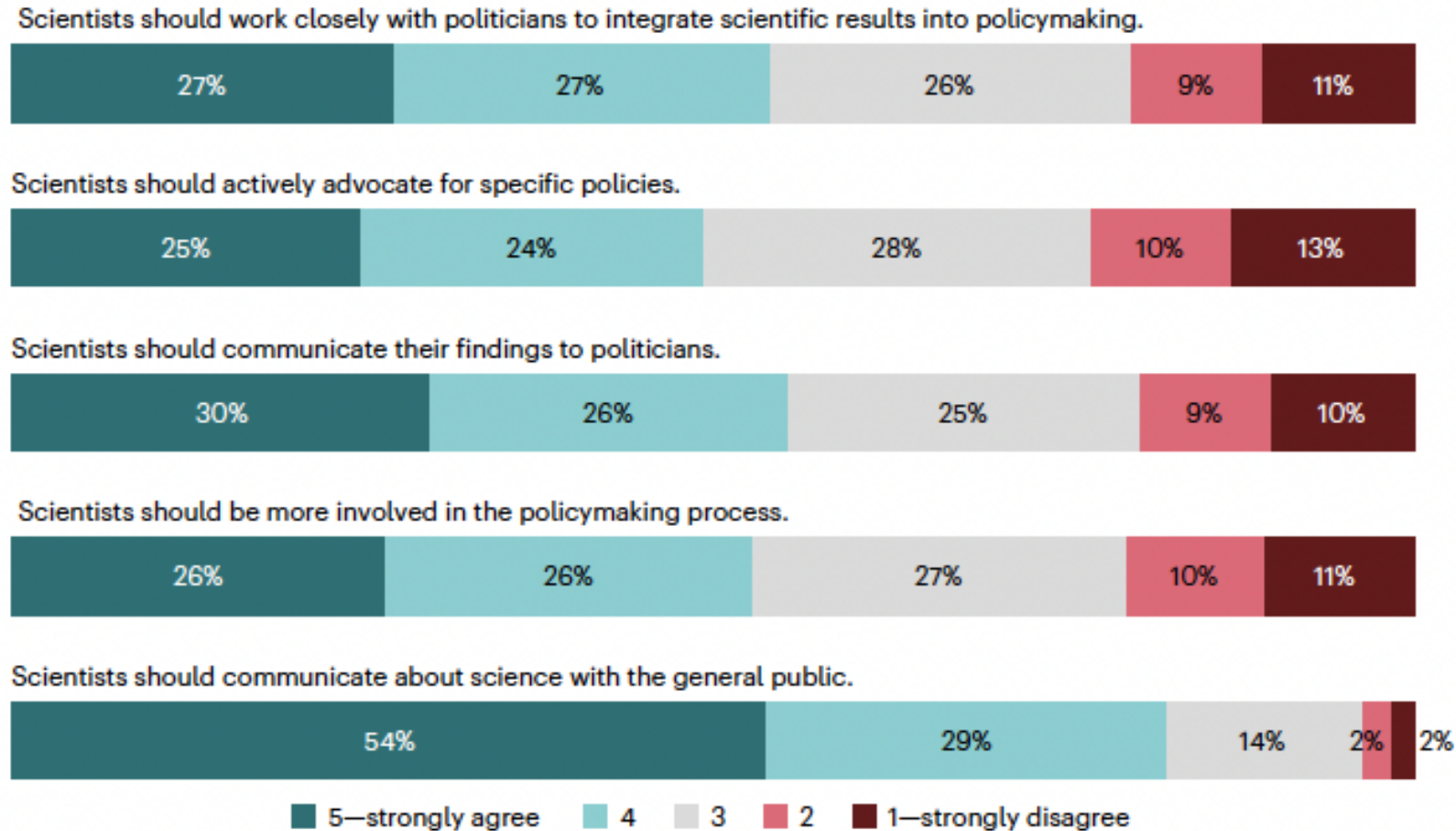


Fig. 4 | Normative perceptions of scientists in society and policymaking. Normative perceptions of scientists in society and policymaking using weighted response

Perceived and desired priorities of scientific research

How strongly do you believe that scientists should prioritize these goals and that science actually tackles them?

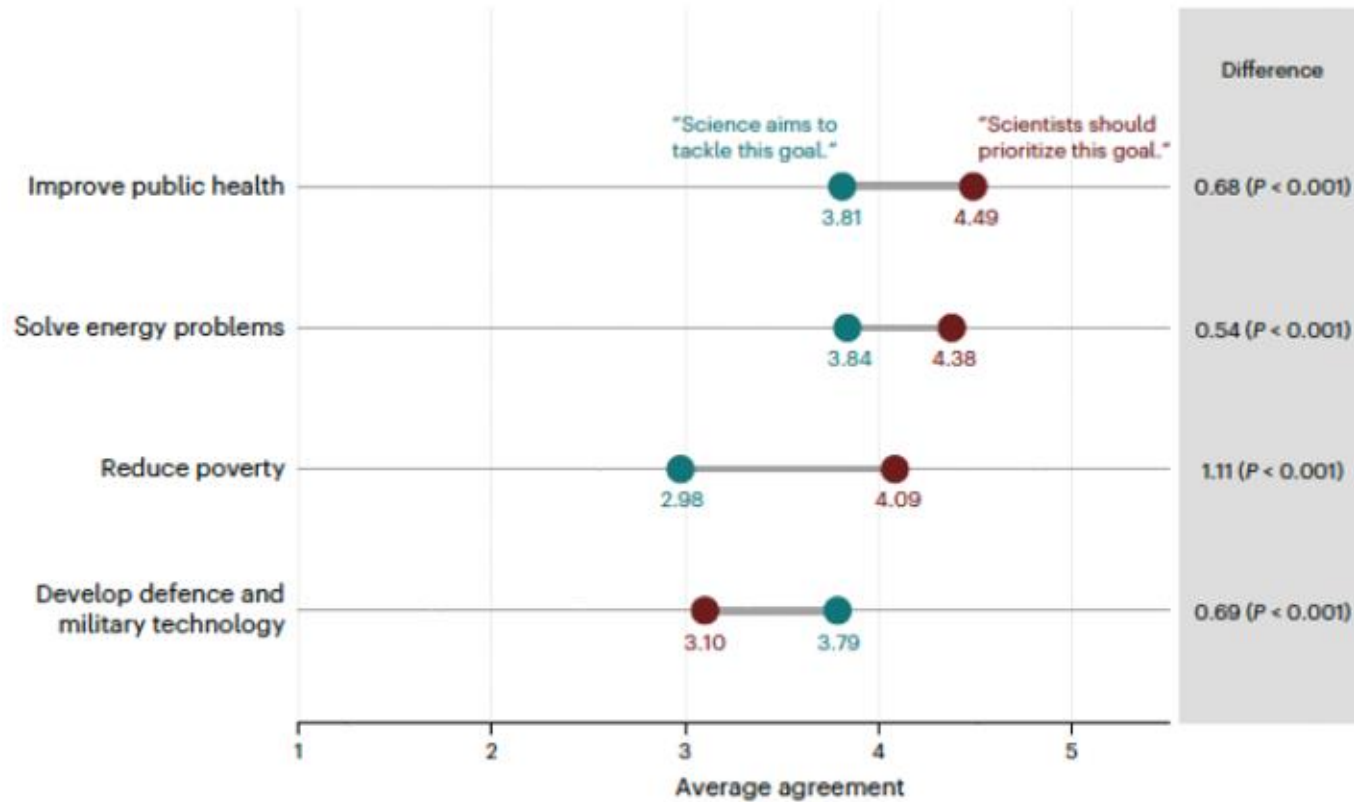
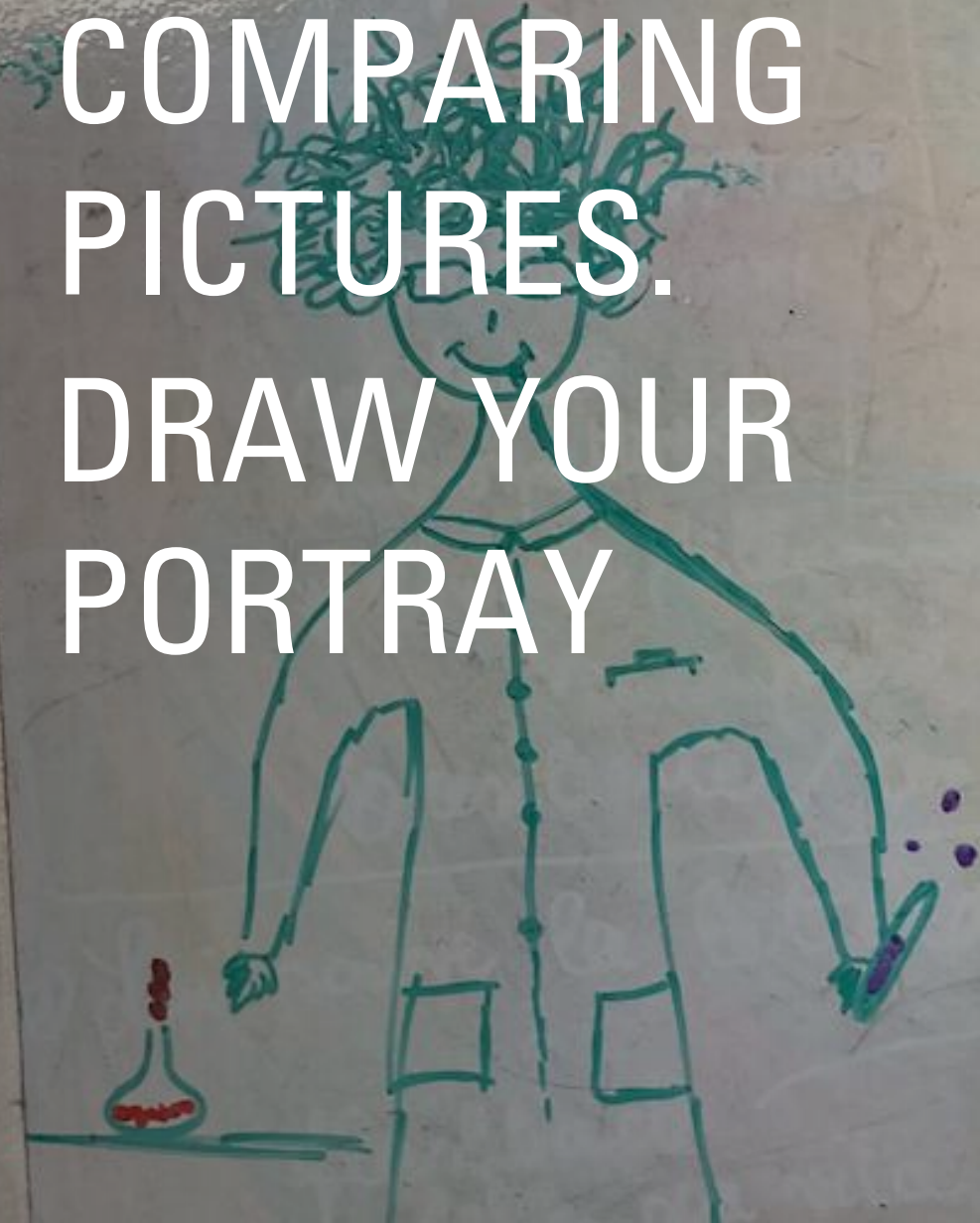
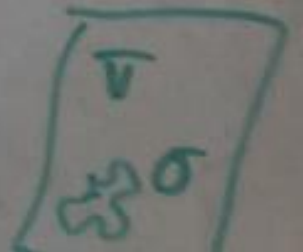
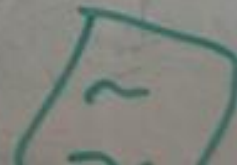
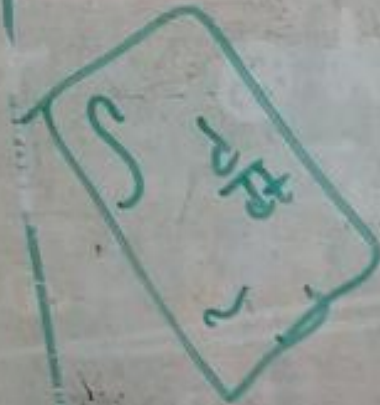
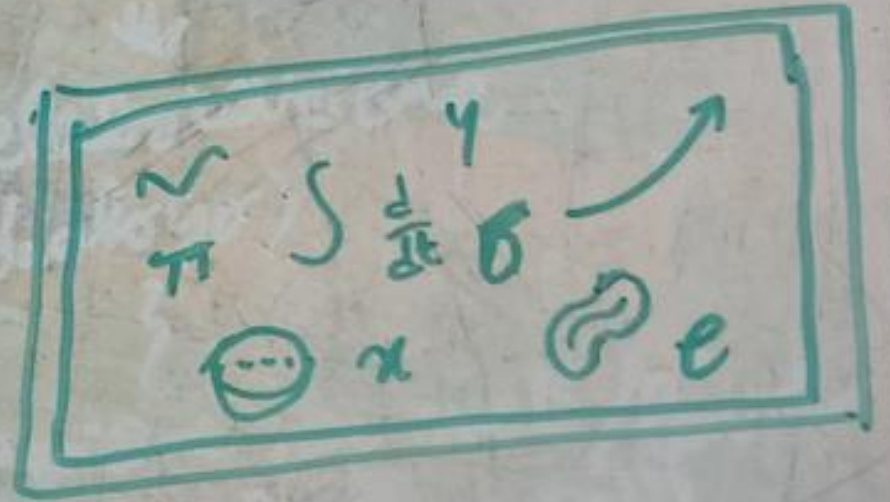


Fig. 5 | Perceived research priorities for four goals of scientific research and desired research priorities. The grey horizontal lines indicate the discrepancy between perceived research priorities ("Science aims to tackle this goal"; blue) and desired priorities ("Scientists should prioritize this goal"; red). The *P* values indicate the results of weighted paired-samples, two-sided *t*-tests for significant differences between perceived priorities and desired priorities.

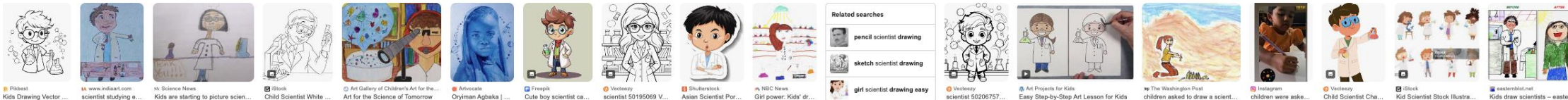
COMPARING PICTURES. DRAW YOUR PORTRAY



60+







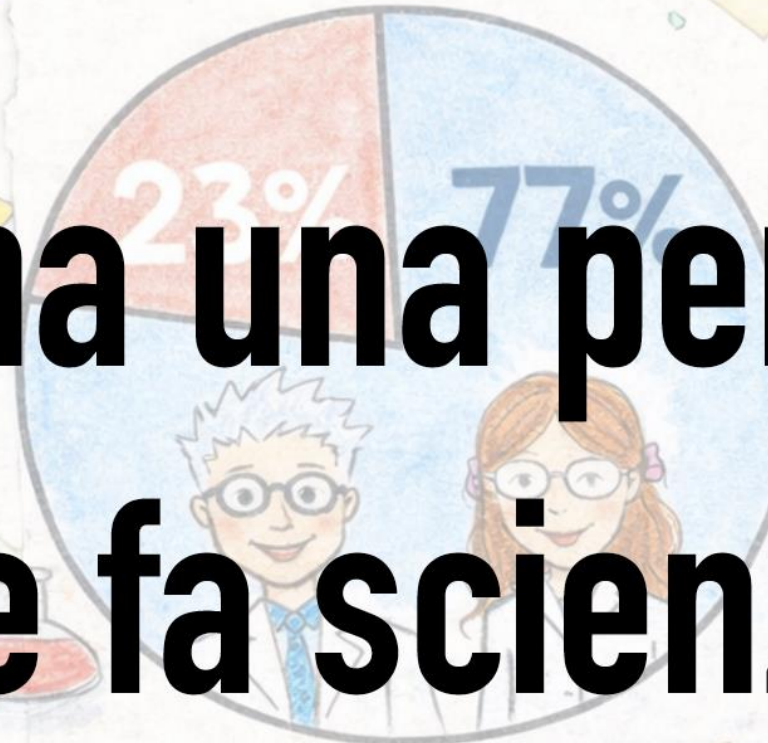
https://drive.google.com/file/d/1eXbP4M1Ocb5tqphLeJJQYoR7s0sYLcYV/view?usp=drive_link

INAF

ISTITUTO NAZIONALE
DI ASTROFISICA



Disegna una persona che fa scienza



Che aspetto ha una persona che fa scienza agli occhi dei bambini?

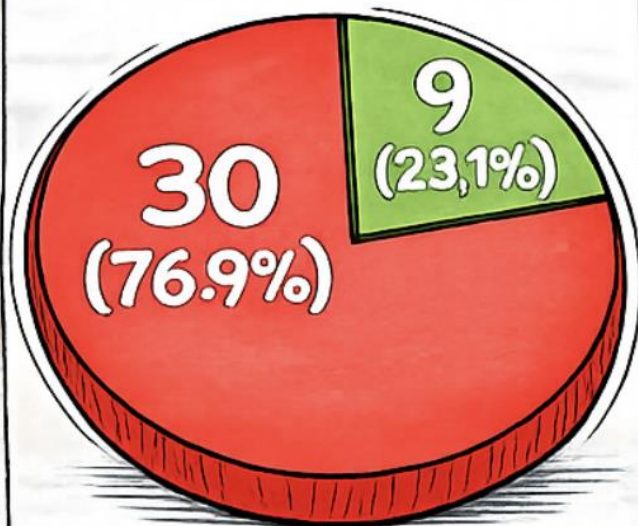
Giornata internazionale delle donne e delle ragazze nella scienza

11 Febbraio 2026

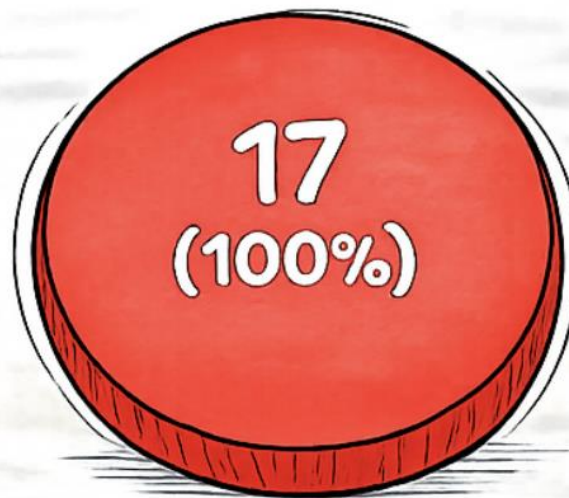


Risultati

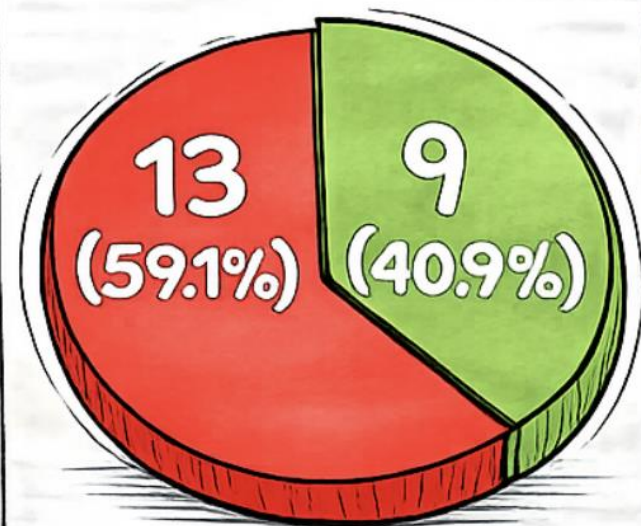
Tutti i bambini



Bambini



Bambine

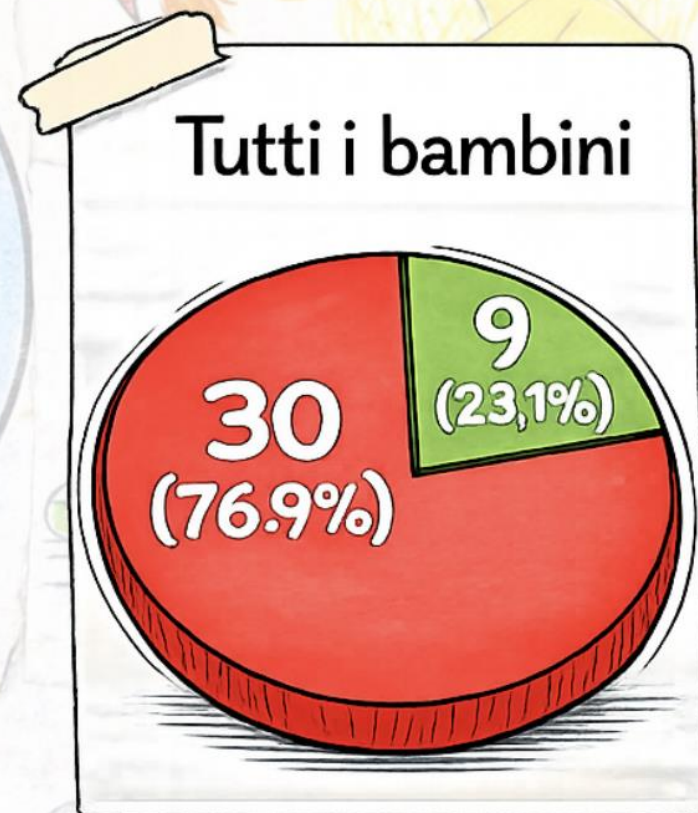
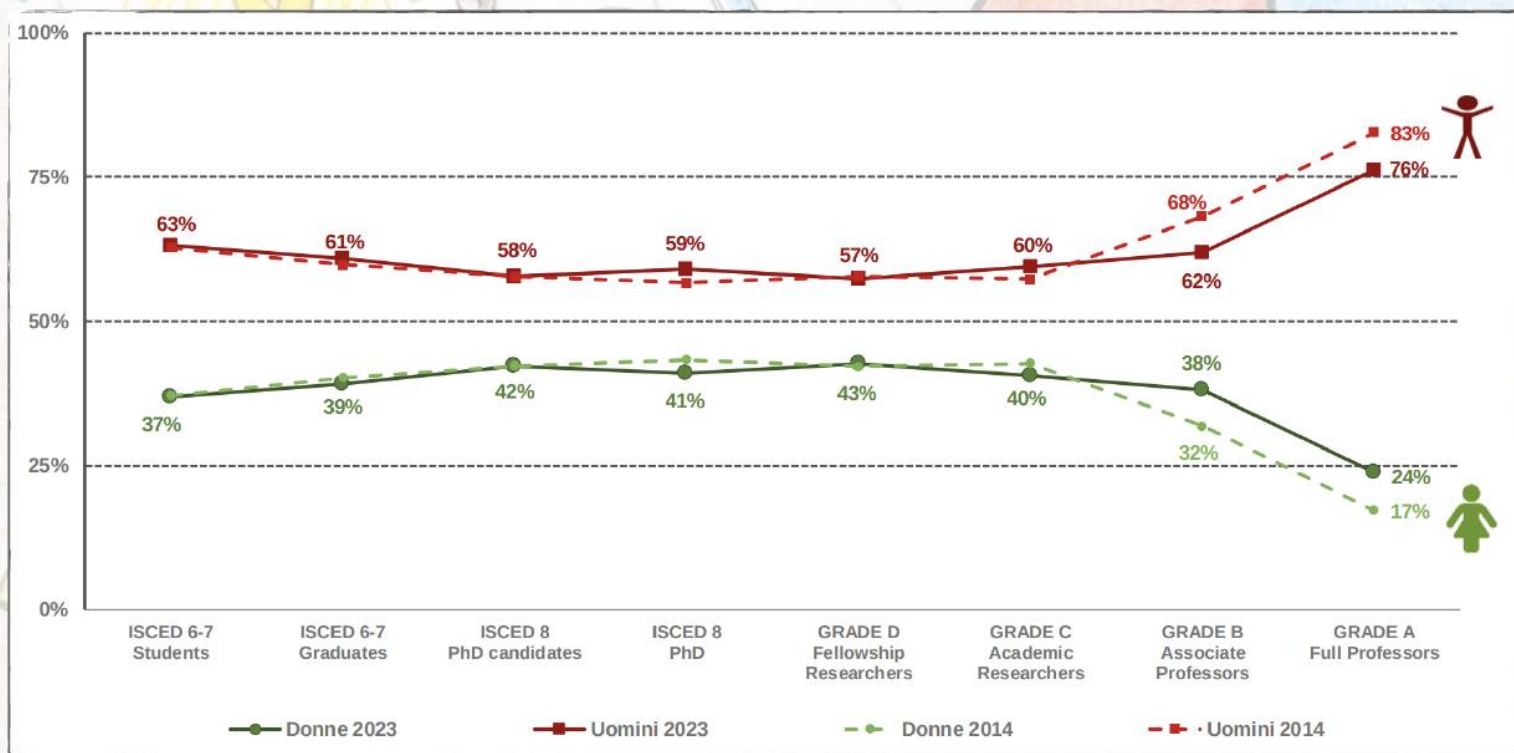


Scienziati
(uomini)



Scienziate
(donne)

i disegni dei bambini riflettono la realtà!



Proporzione di donne e uomini in una tipica carriera accademica nelle aree STEM*: studenti, personale docente e ricercatori – anni 2014 e 2023.

(*) STEM include: Natural Science, Mathematics and Statistics, Information and Communication Technologies (ICT) and Engineering, Manufacturing and Construction

The image of scientists in *The Big Bang Theory*

Margaret A. Weitekamp

In some ways, the hit TV show reinforces popular stereotypes about scientists. In others, notably in its affectionate portrayals, it plays against type.



<https://www.youtube.com/watch?v=OP0fdNKc2Mc>

**WORK IN GROUPS: ANALYSE ONE
OF THE ARTICLES, FIND THE
MAIN FEATURES OF THE
SCIENTIST PORTRAY AND
COMPARE WITH DRAWINGS.**

Image of the Scientist among High-School Students (1957)



[Margaret Mead](#), [Rhoda Metraux](#)

[Science](#), New Series, Vol. 126, No. 3270 (Aug. 30, 1957), pp. 384-390 (7 pages)

<https://www.jstor.org/stable/1752140?seq=1>

Portrait of a scientist (2005)



https://moodle2.units.it/pluginfile.php/812721/mod_resource/content/1/Portrait_of_a_scientist.pdf

The image of scientists in *The Big Bang Theory* (2017)



Margaret A. Weitekamp; The image of scientists in *The Big Bang Theory*. *Physics Today* 1 January 2017; 70 (1): 40–48

<https://doi.org/10.1063/PT.3.3427>
