

SWAN – Laboratory session

Useful website and material

[SWAN download](#)

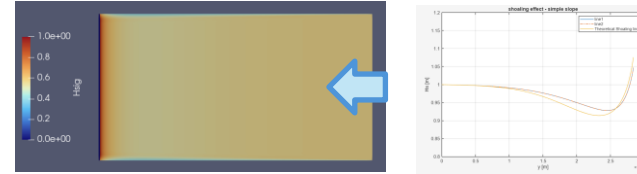
- See the test cases – some of them have been downloaded and modified, you find them in moodle
- [Docker Desktop: The #1 Containerization Tool for Developers | Docker](#) – this is the fast way to use SWAN
- User Manual [swanuse.dvi](#)

SWAN – Laboratory session – Test Cases

1 – Shoaling 2D

`\Shoaling_slope`

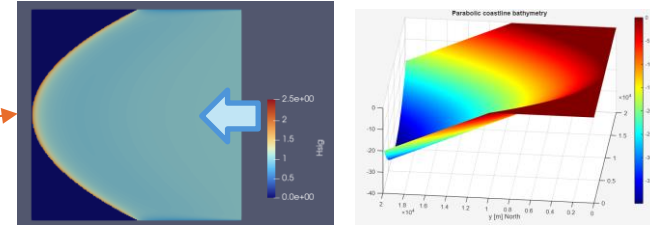
- Get familiar with SWAM
- Compare results with linear theory



2 – Shoaling with refraction

`\bathymetry_inputTest`

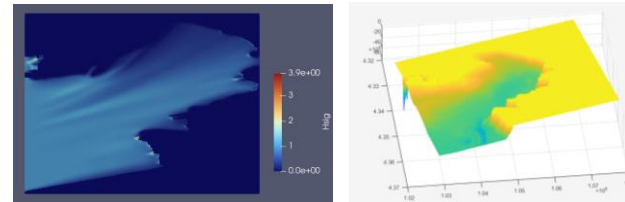
- Compare with case (1)
- Change curvature?
- Try analytical solution?



3 – Trieste Gulf

`\bathymetry_gulfTrieste`

- Refer to the meteomarina report
- Change BC



4 – SWAN tutorial or alternative bathymetry

`\bathymetry_tutorial`

- There are 4 different time windows – comment results
- Choose your region – use of EMODnet for the bathymetry – and [ISPRA](#) for input data

