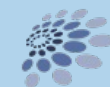
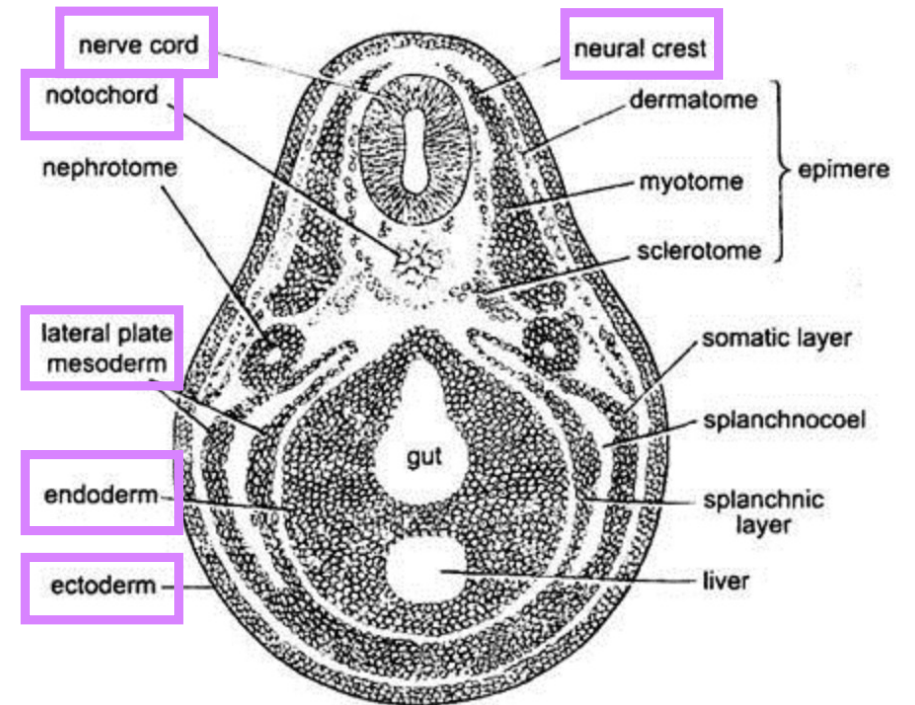
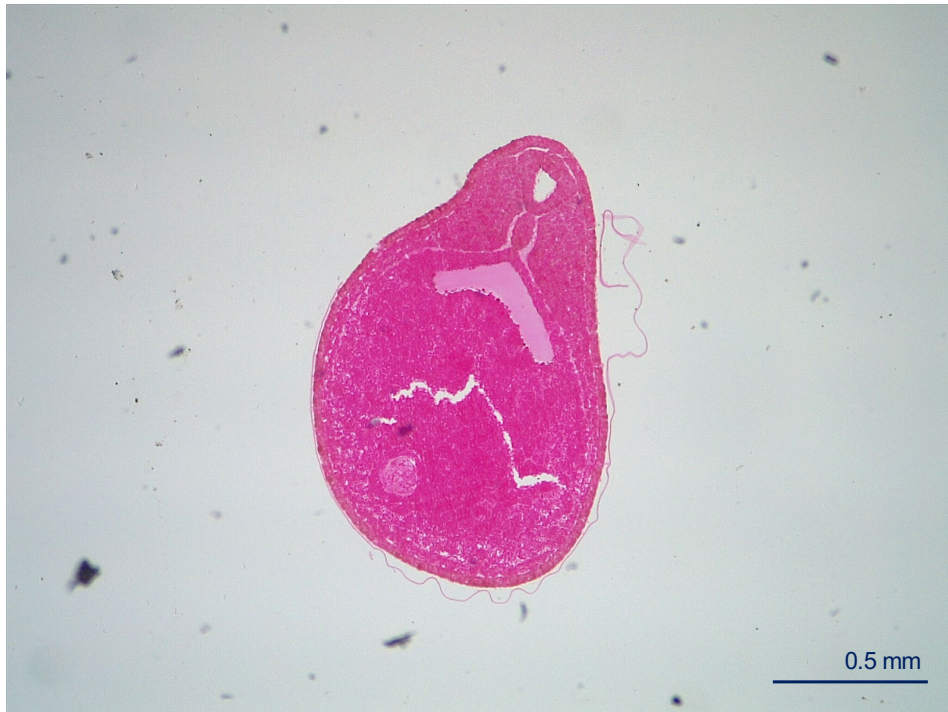
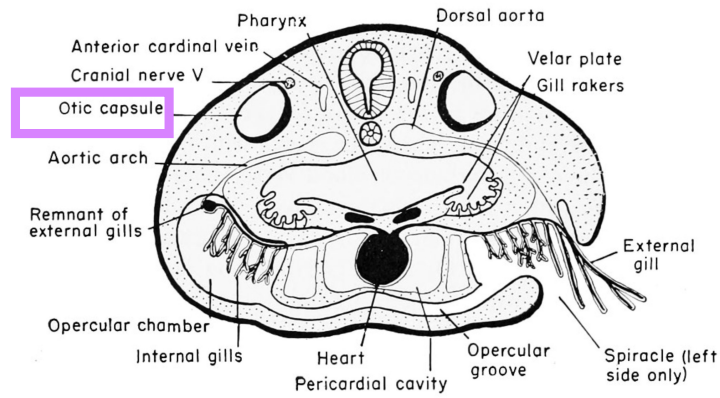


The Frog Embryology

2.5 8305 - Early tail bud stage, t.s.



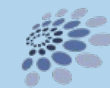
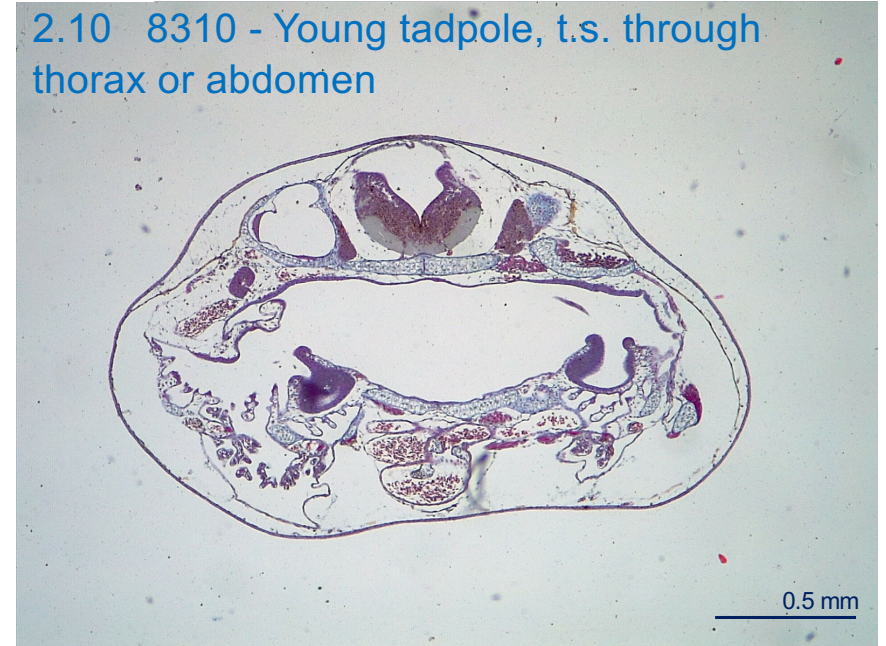
The Frog Embryology



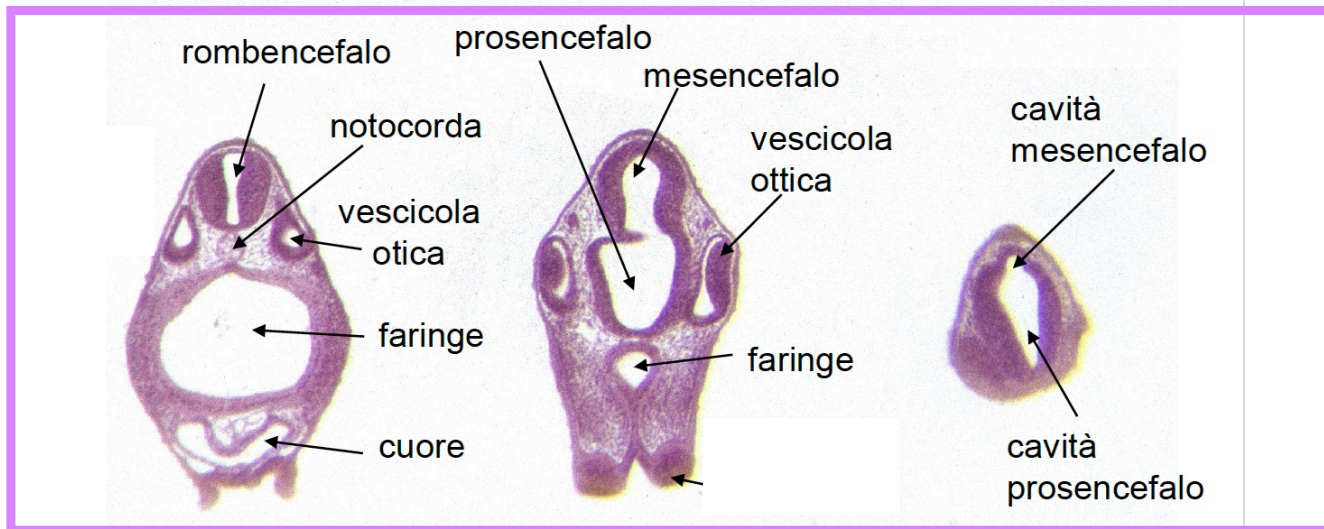
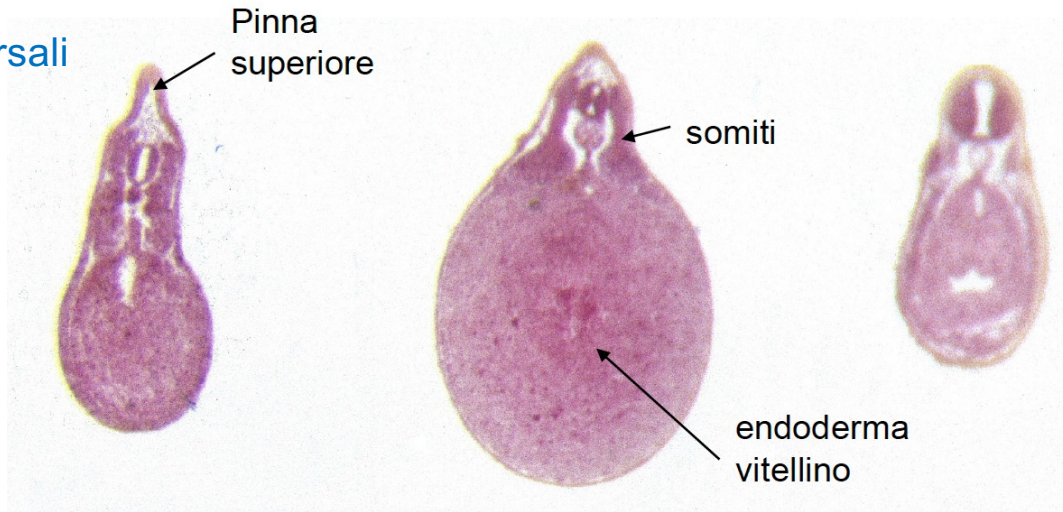
2.9 8309 - Young tadpole, t.s. through head



2.10 8310 - Young tadpole, t.s. through thorax or abdomen

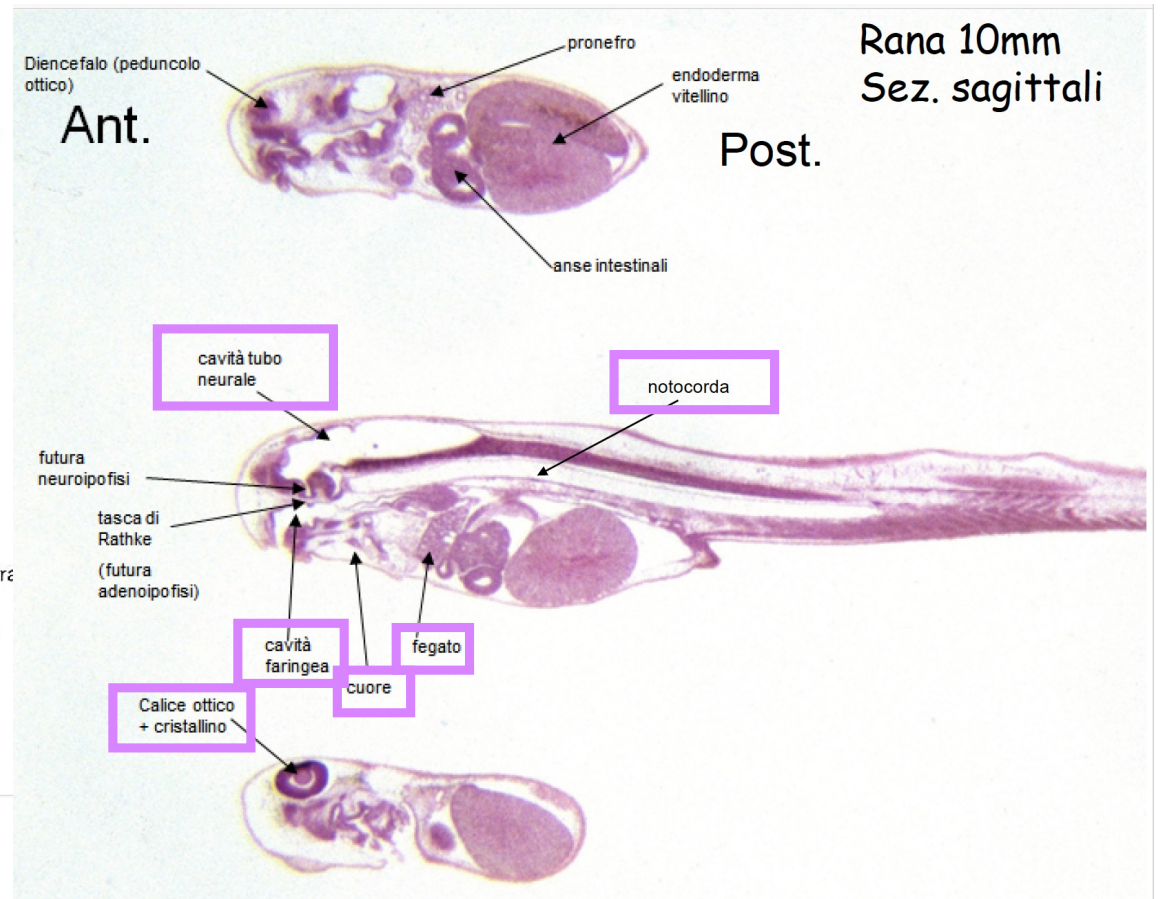
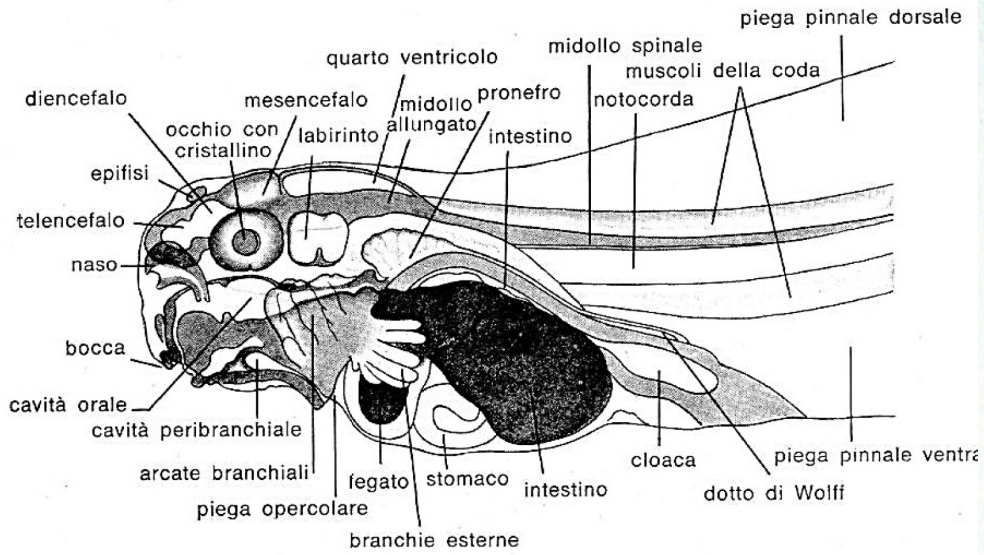


Rana
4mm sez. trasversali



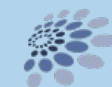
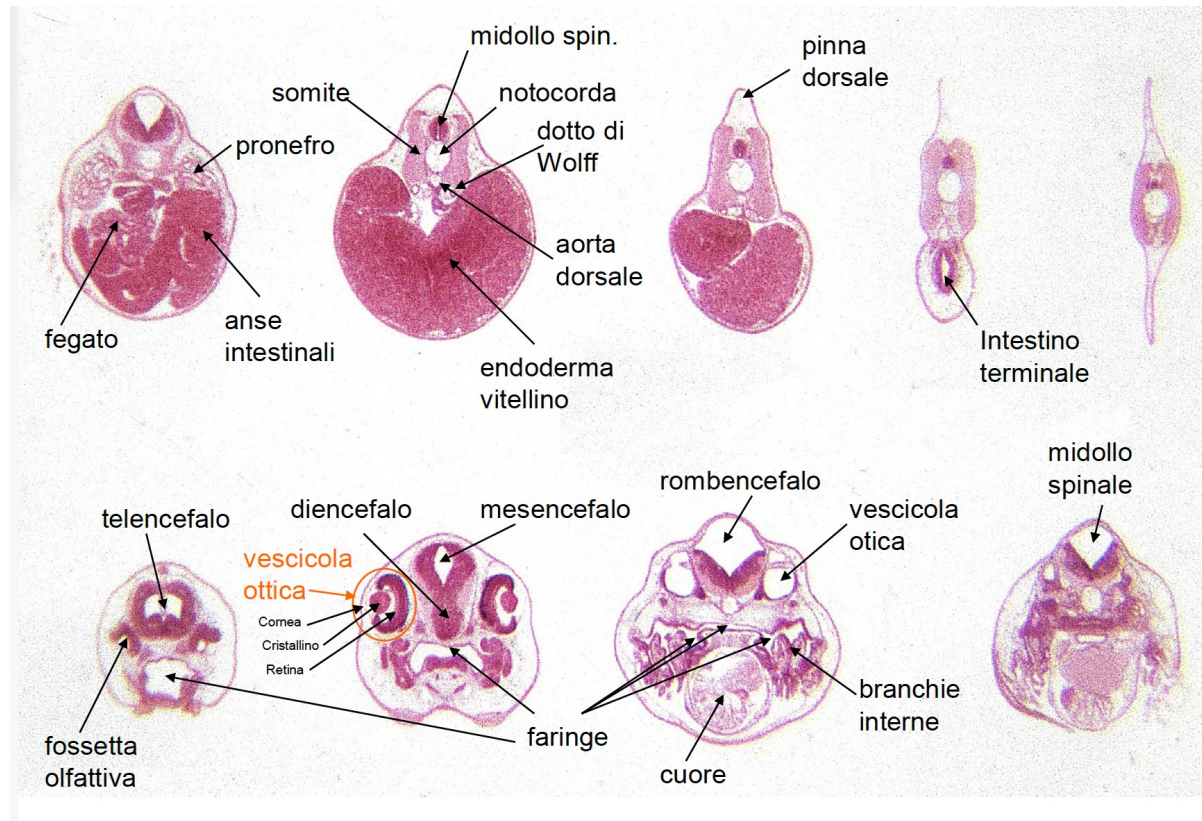
Rana

10 mm sez. sagittali

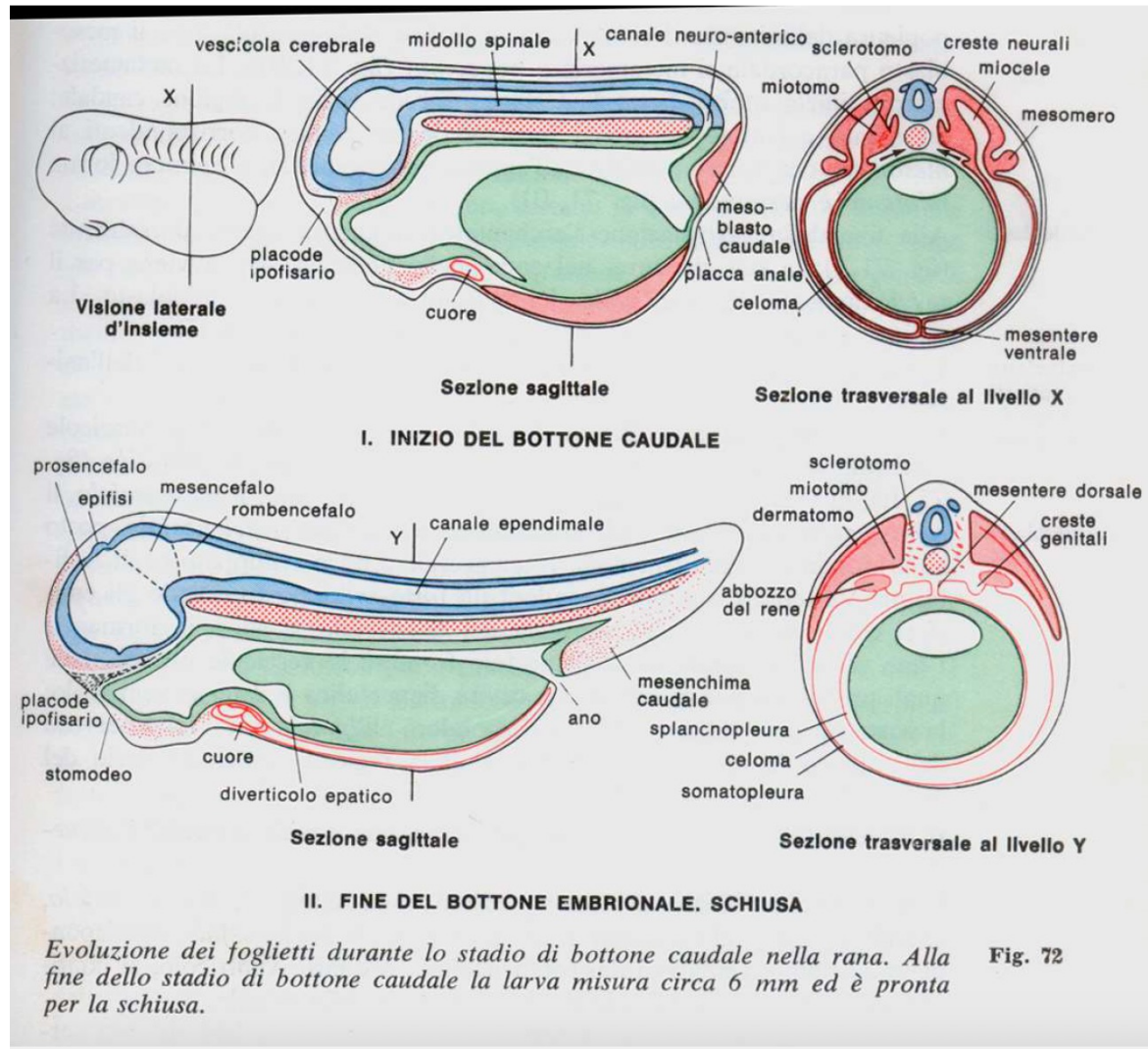


Rana

10 mm sez. trasversali

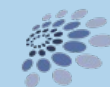


Rana organogenesi

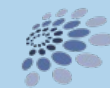
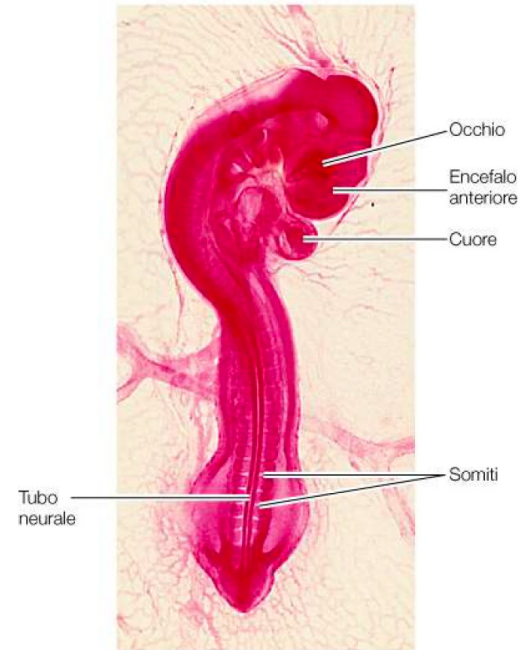
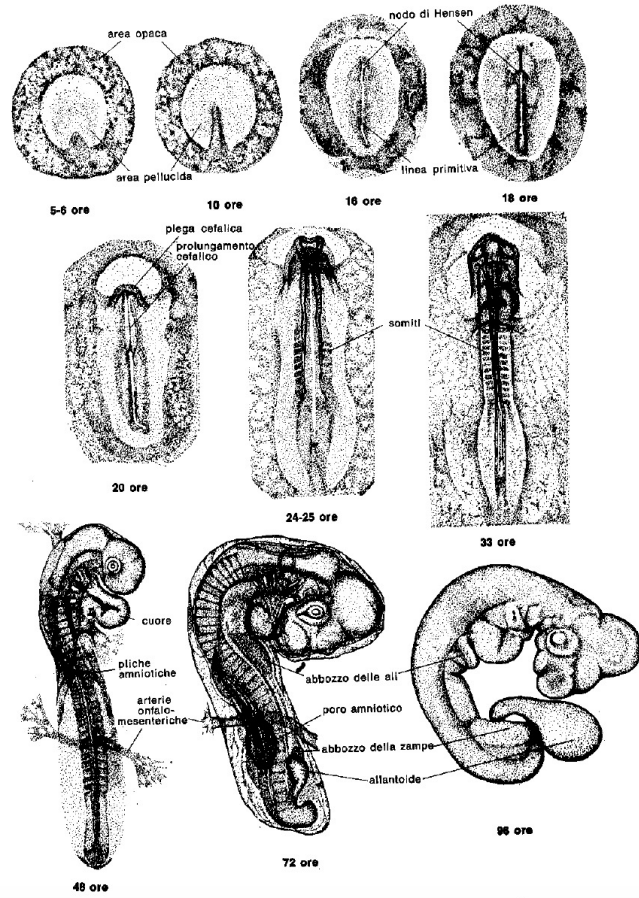


Evoluzione dei foglietti durante lo stadio di bottone caudale nella rana. Alla fine dello stadio di bottone caudale la larva misura circa 6 mm ed è pronta per la schiusa.

Fig. 72

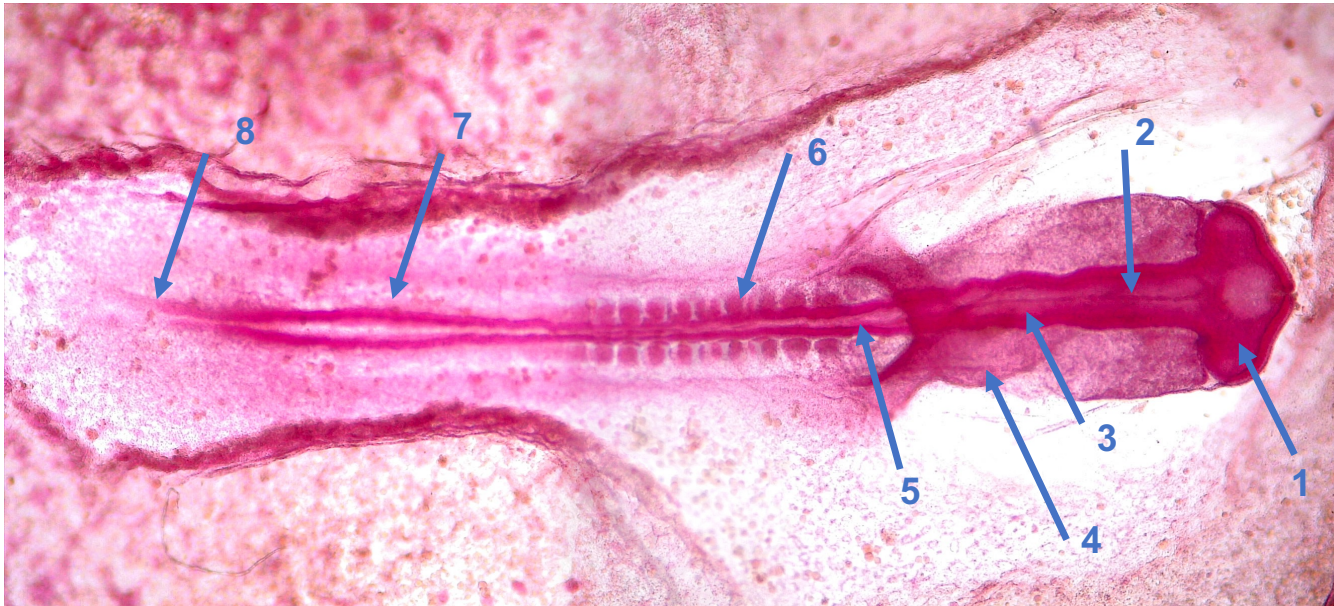


Pollo organogenesi

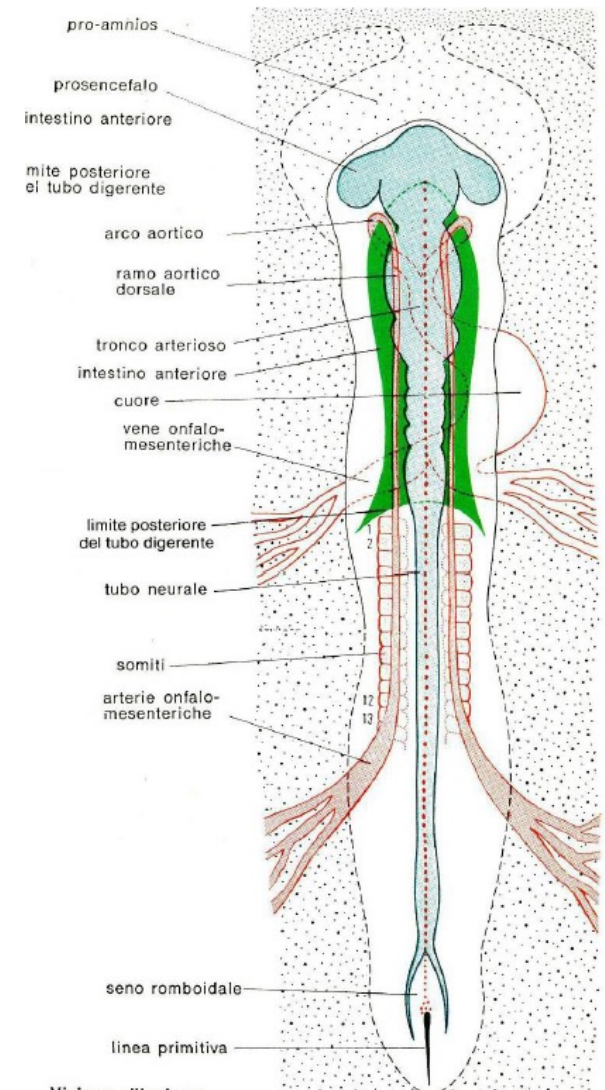


The Chicken Embryology

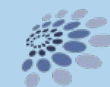
1.15 Chick 33 hr w.m. 311562



- | | | |
|--------------------|--------------------|--------------------|
| 1. Tele+Diencefalo | 4. Cuore | 7. Placca Neurale |
| 2. Mesencefalo | 5. Midollo Spinale | 8. Stria Primitiva |
| 3. Rombencefalo | 6. Somiti | |



UNIVERSITÀ
DEGLI STUDI
DI TRIESTE

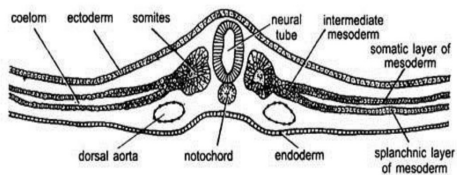
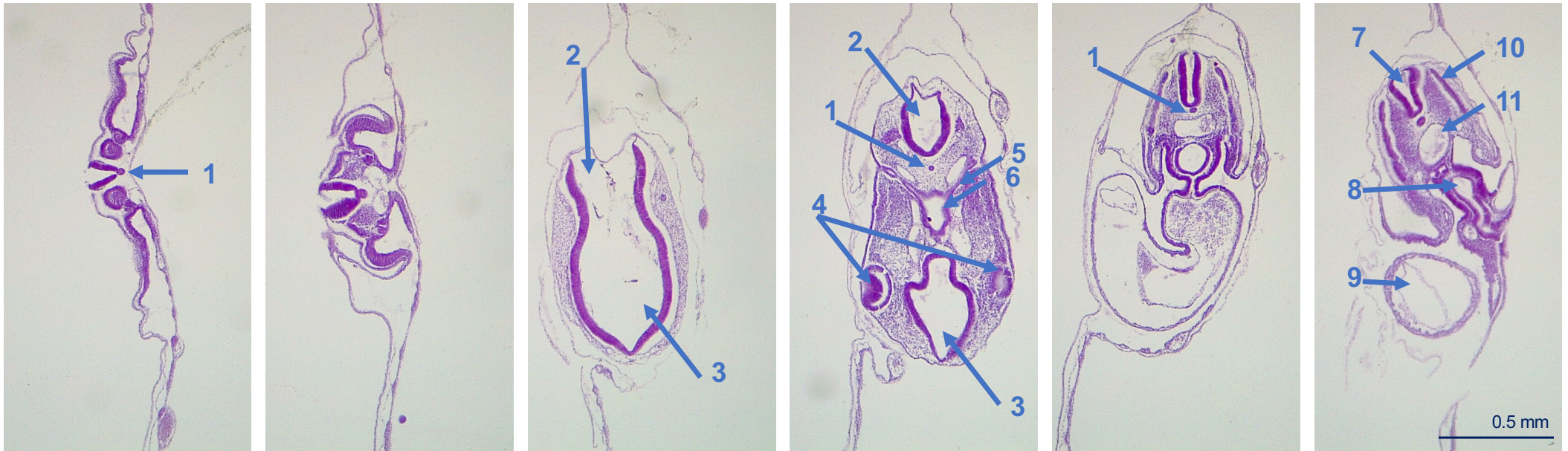
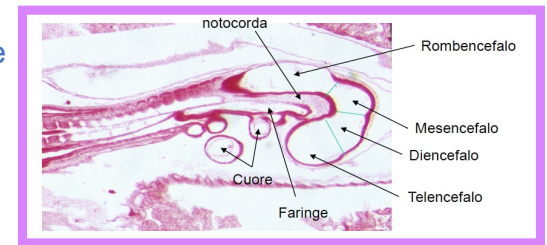


Dipartimento di
Scienze della Vita

The Chicken Embryology

1.17 Chick 48 hr rep. c.s. 31-1598

Sez. sagittale
mediana



- 1. Notocorda
- 2. Rombencefalo
- 3. Mesencefalo

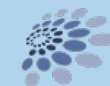
- 4. Calice ottico/cornea
- 5. Vescicole ottiche
- 6. Tetto della faringe

- 7. Midollo Spinale
- 8. Intestino
- 9. Cuore

- 10. Somiti
- 11. Aorta



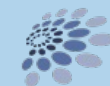
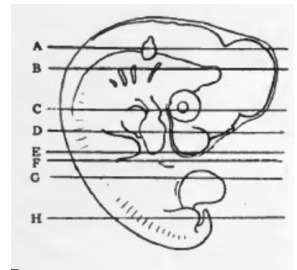
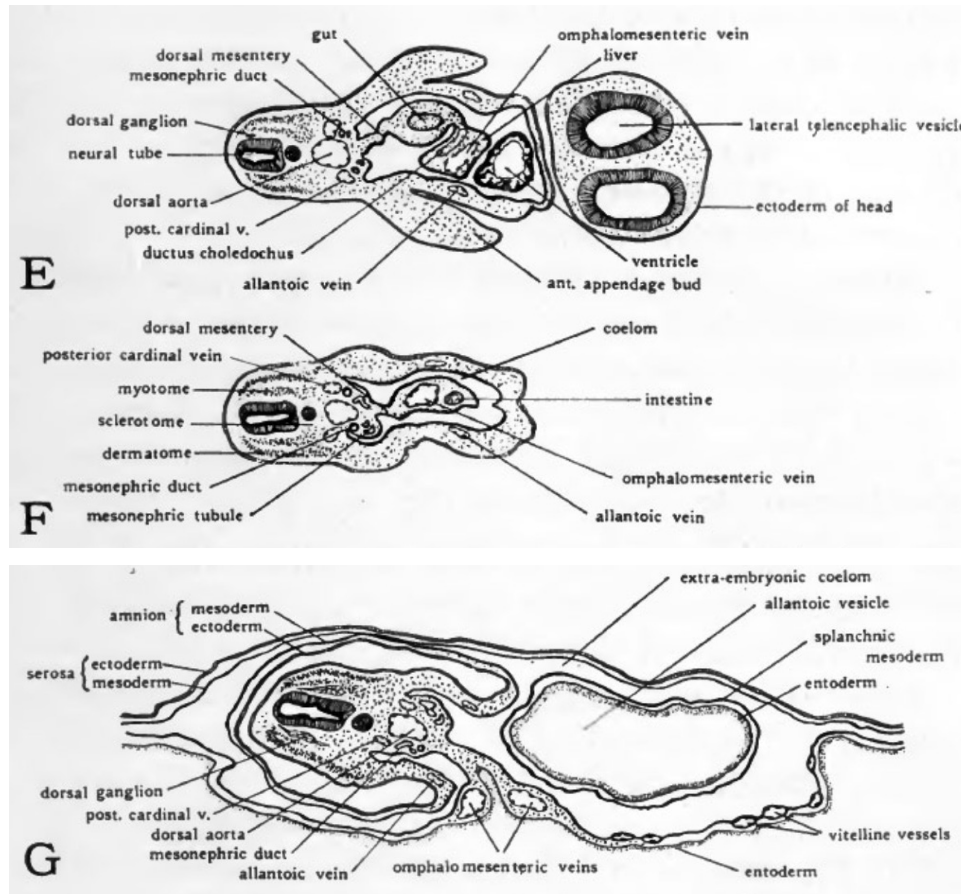
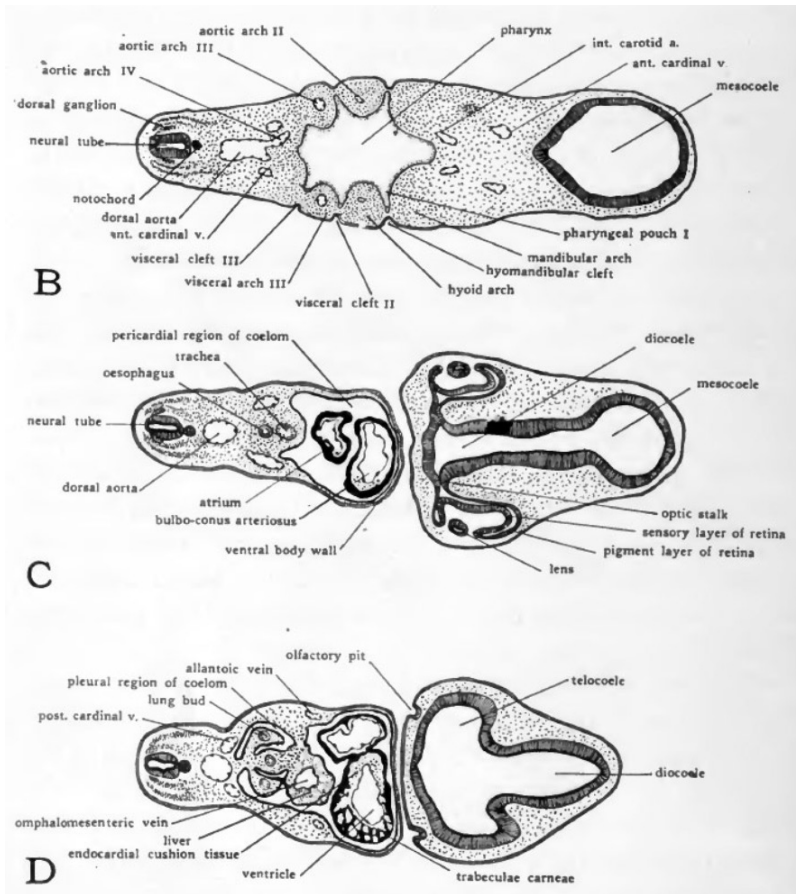
UNIVERSITÀ
DEGLI STUDI
DI TRIESTE



Dipartimento di
Scienze della Vita

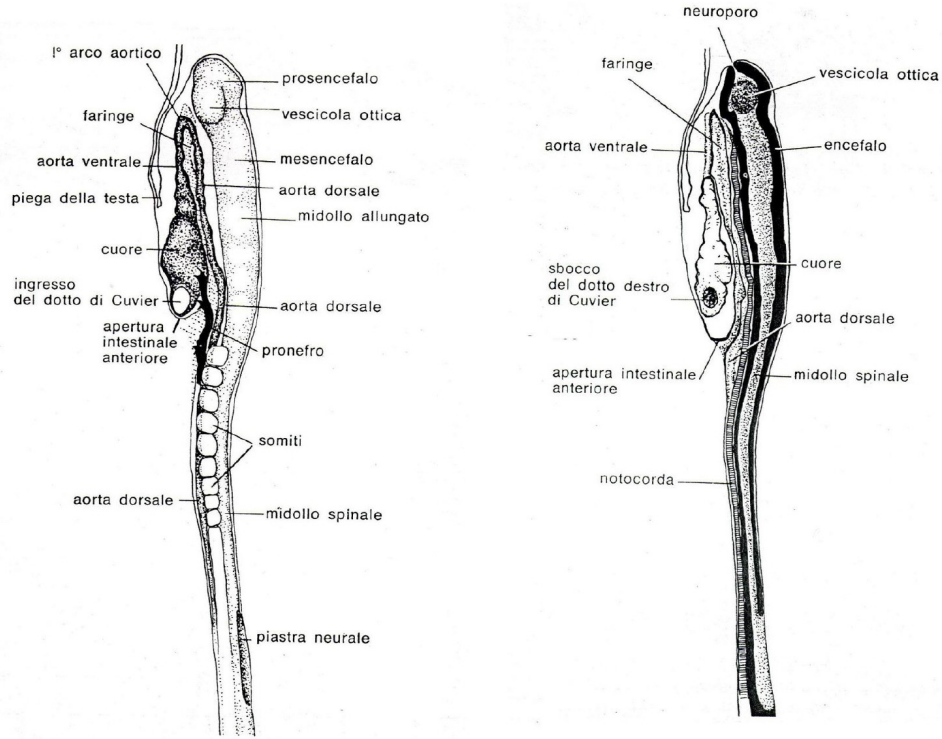
The Chicken Embryology

3-4 day horizontal section of entire specimen

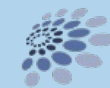
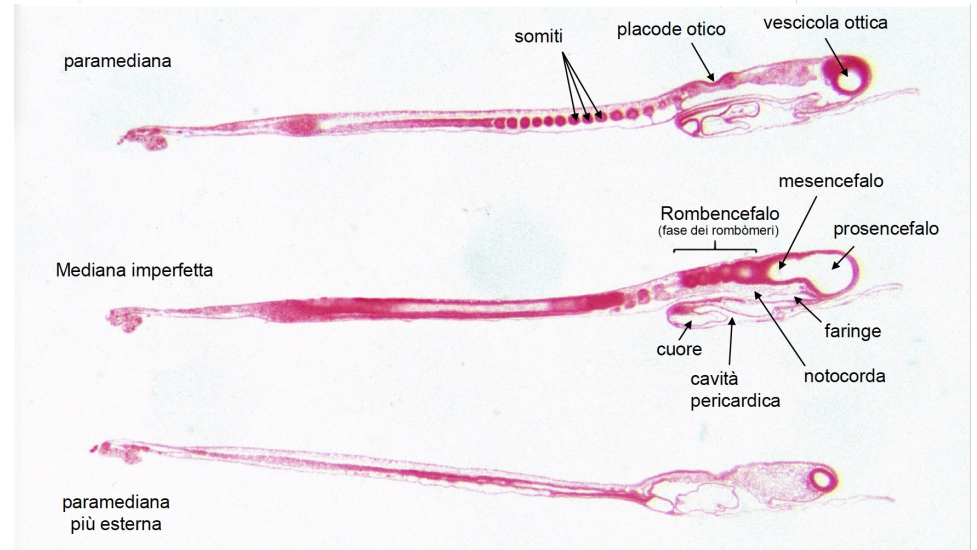
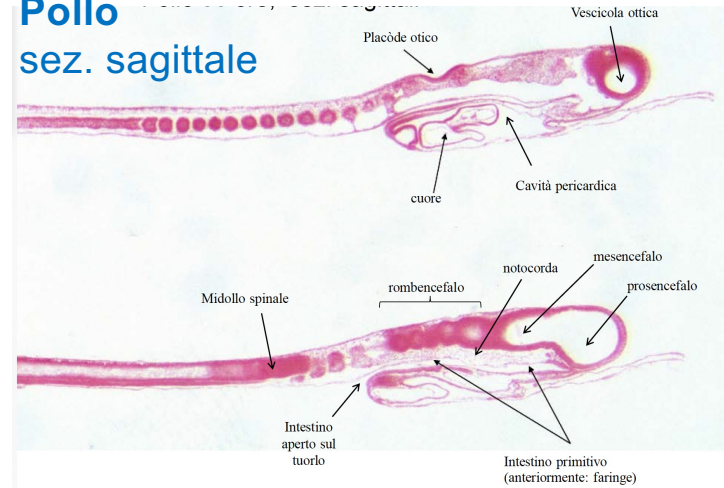


Pollo

33 ore: visione laterale e sezione sagittale

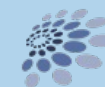
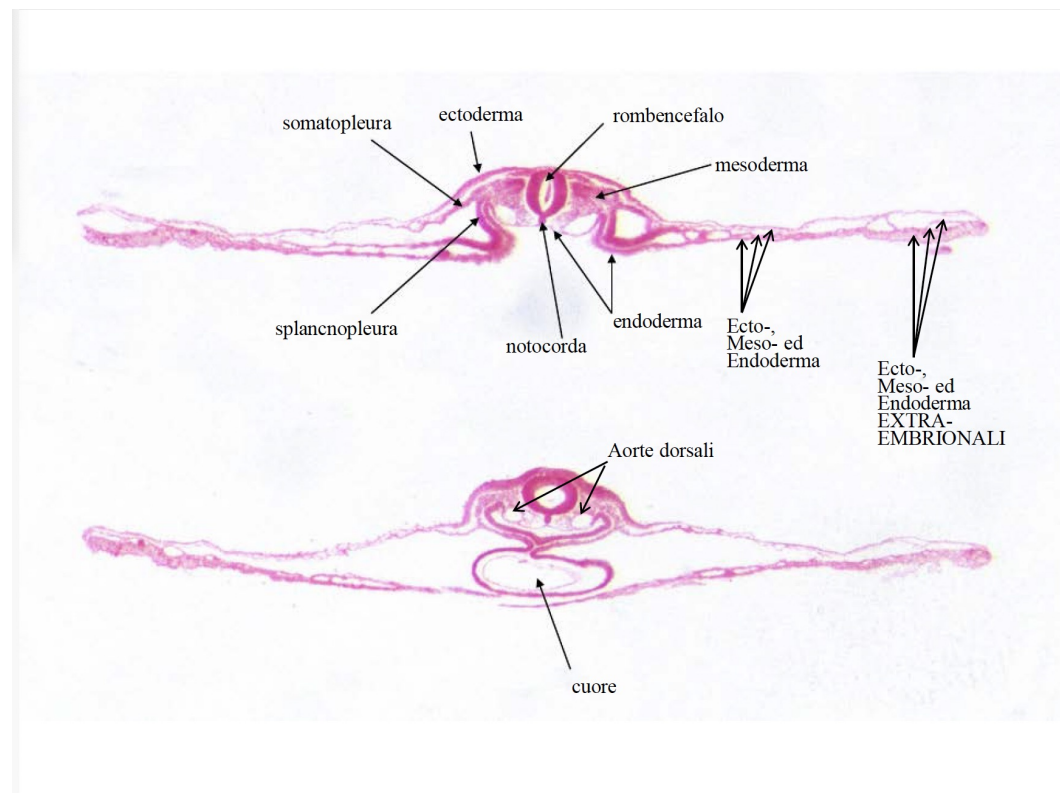
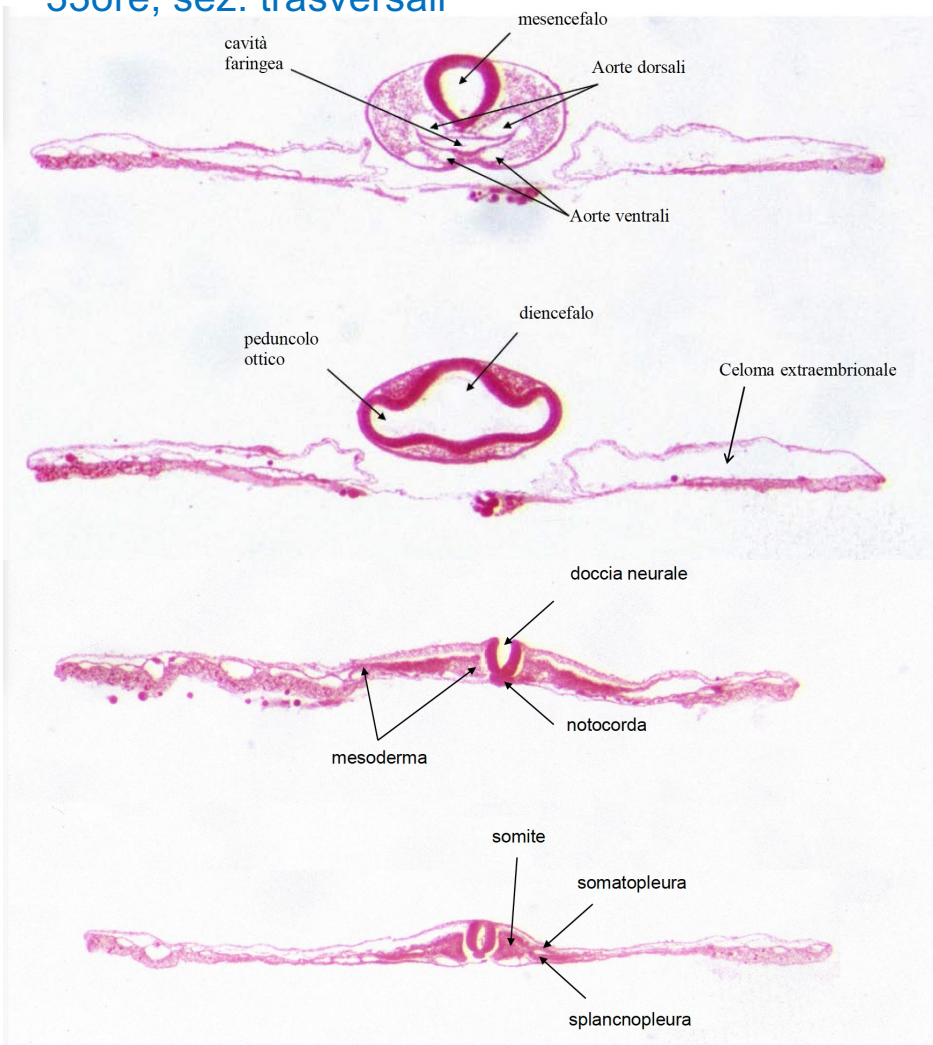


Pollo sez. sagittale



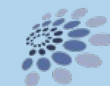
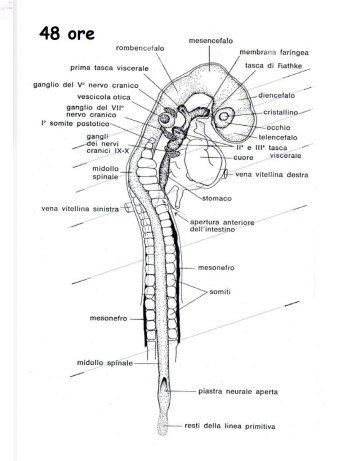
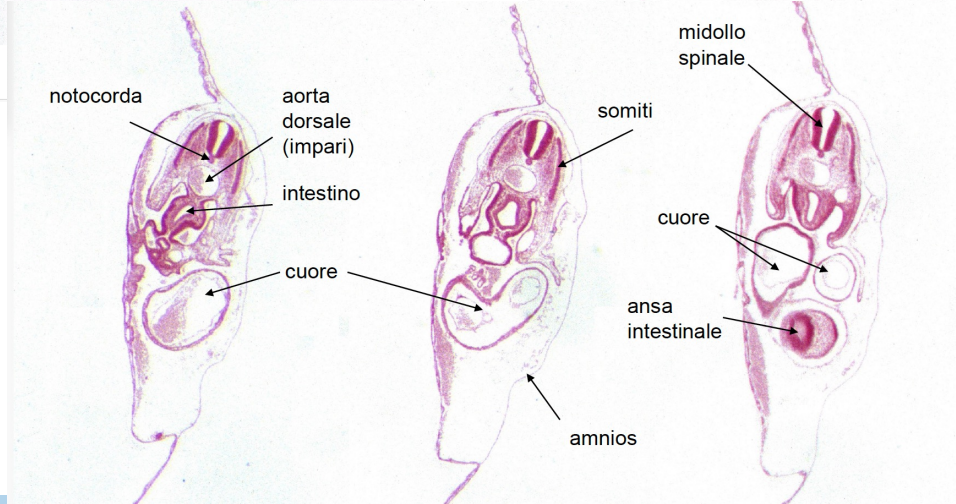
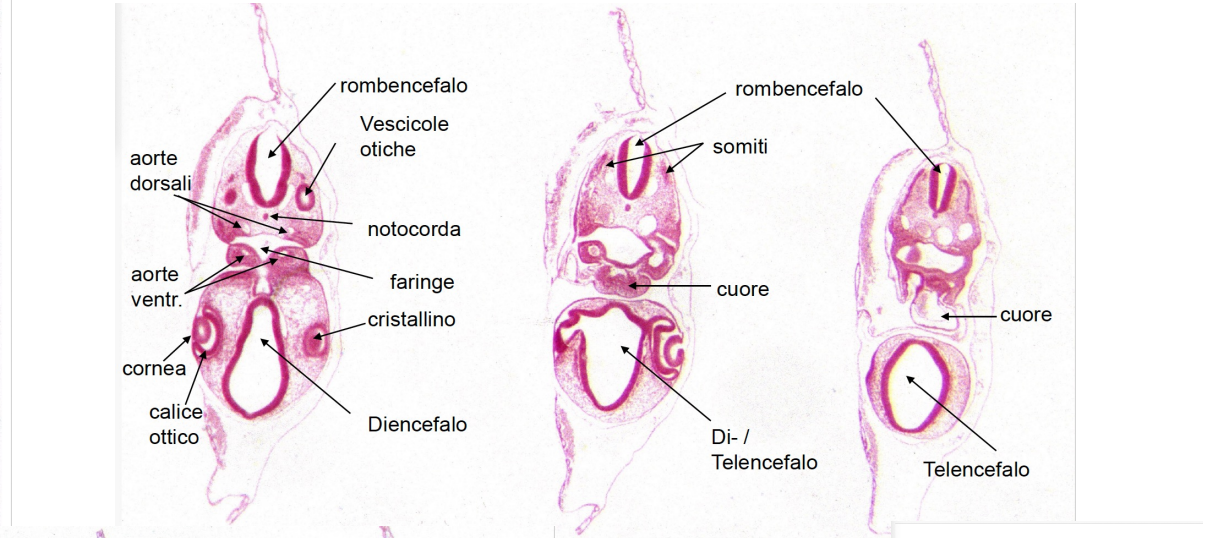
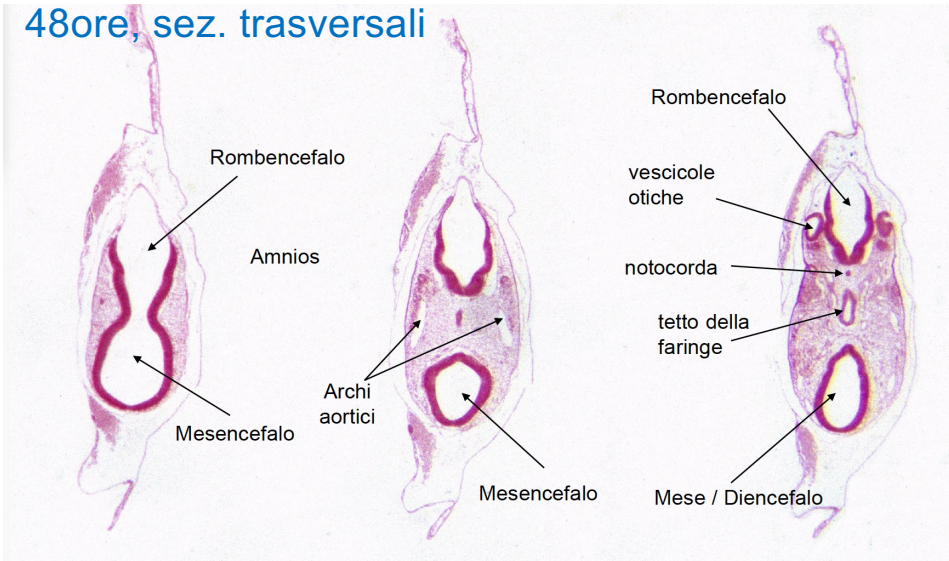
Pollo

33ore, sez. trasversali



Pollo

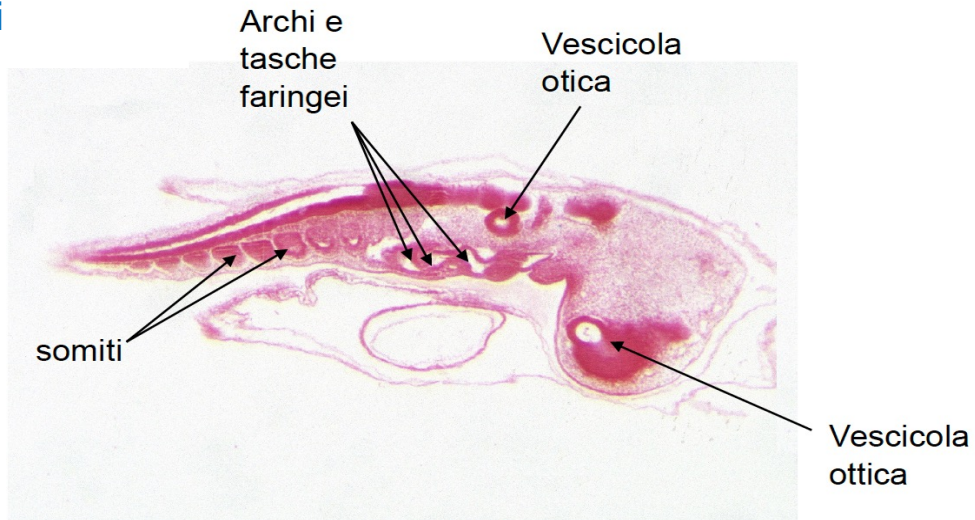
48ore, sez. trasversali



Pollo

48ore, sez. sagitali

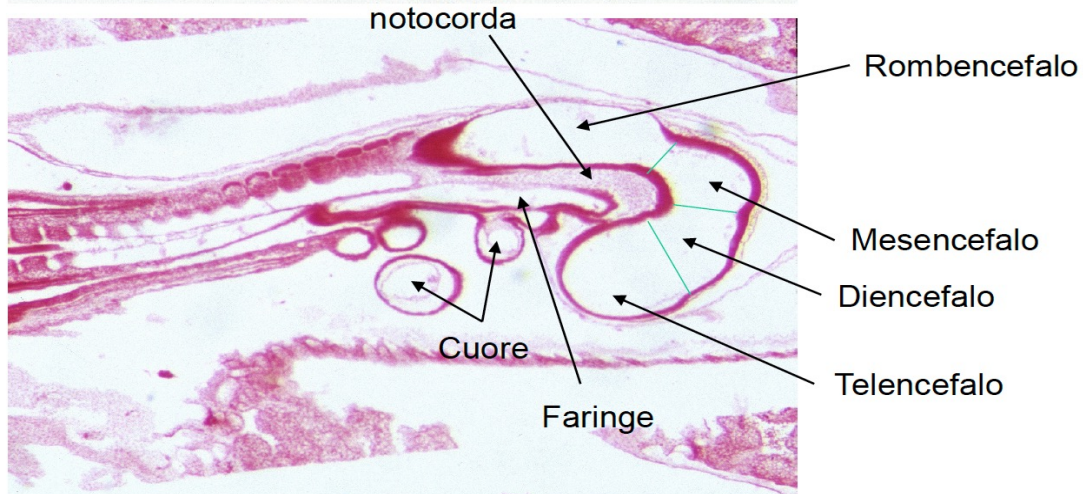
Sez. paramediana



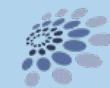
Ordine di comparsa dei principali caratteri morfologici nell'embrione di pollo

Deposizione	
18 ore	fine della segmentazione dell'uovo.
20 ore	linea primitiva completa; prolungamento cefalico o notocordale
24 ore	piega cefalica.
26 ore	4 paia di somiti; pliche neurali sollevate.
33 ore	inizio della fusione delle pliche neurali.
37 ore	12-13 paia di somiti; vescicole cerebrali complete; piega amniotica cefalica; cuore differenziato.
48 ore	movimenti cardiaci; inizio della torsione.
56 ore	24-26 paia di somiti; scomparsa della linea primitiva; piega amniotica posteriore.
60 ore	comparsa dell'abbozzo degli arti.
72 ore	inizio di formazione dell'allantoide.
96 ore	37-39 paia di somiti; allantoide visibile nel celoma extra-embriionale.
	amnios completo; embrione coricato sul fianco sinistro; somiti completi

Sez. mediana



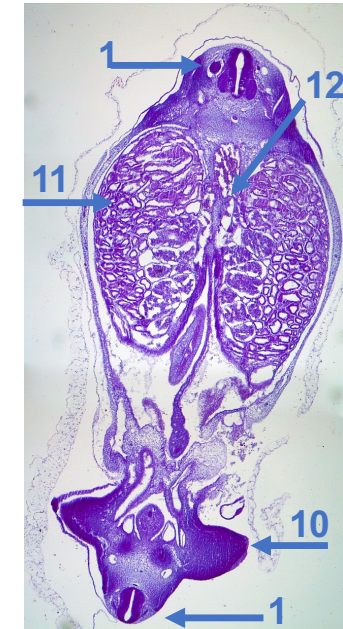
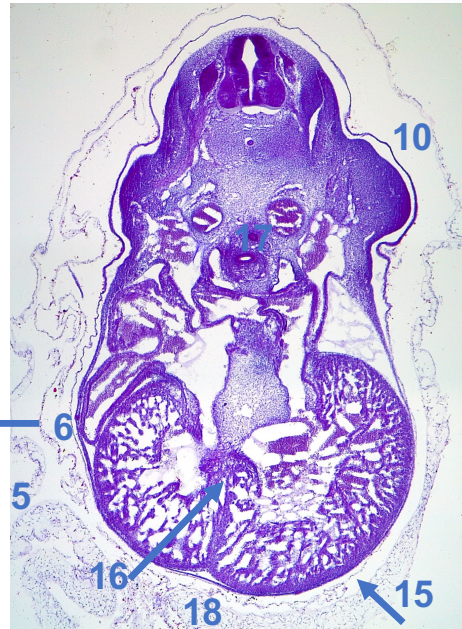
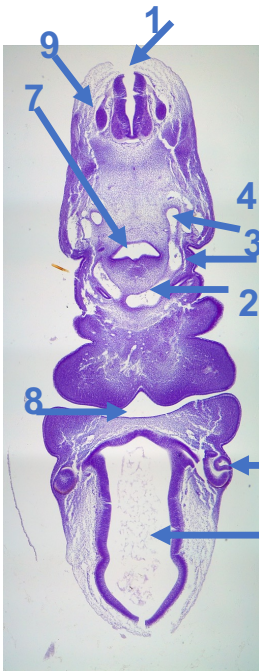
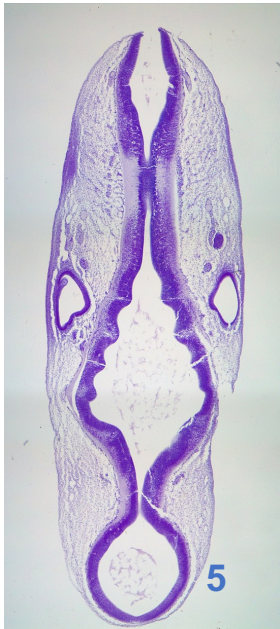
UNIVERSITÀ
DEGLI STUDI
DI TRIESTE



Dipartimento di
Scienze della Vita

The Pig Embryology

1.21 Pig 10 mm, transversal section



1. Tubo Neurale
2. Aorta ventrale
3. Arco aortico

4. Aorta dorsale
5. Diencefalo
6. Vescicole ottiche

7. Faringe
8. Bocca
9. Gangli dorsali

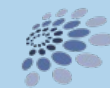
10. Abbozzo arto
11. Mesonefro
12. Cresta genitale

13. Abbozzo arto
14. Fegato
15. Cuore

16. Setto ventricolare
17. Abbozzo polmonare
18. Solco intraventricolare



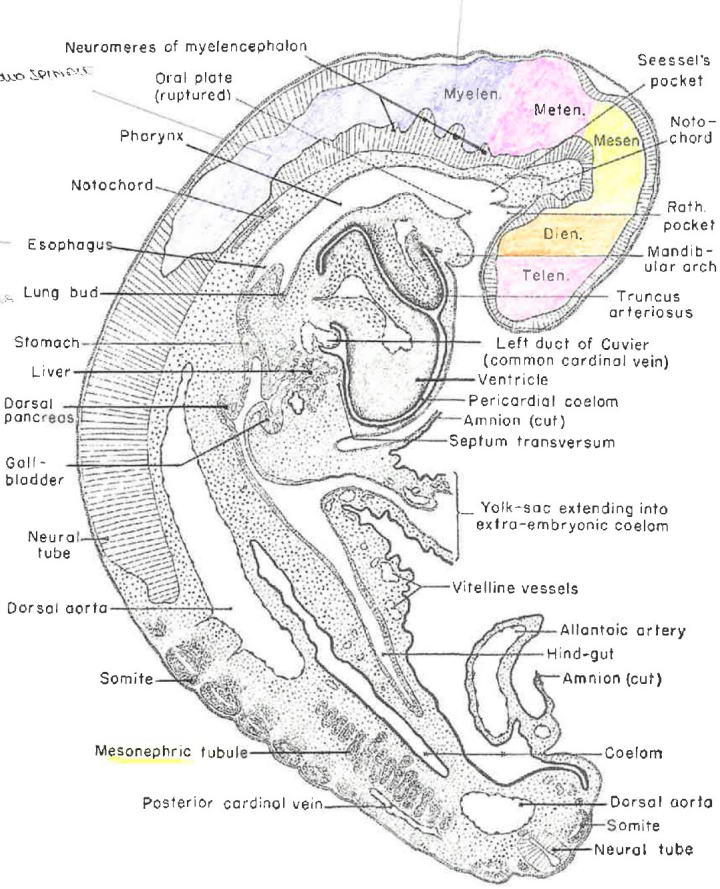
UNIVERSITÀ
DEGLI STUDI
DI TRIESTE



Dipartimento di
Scienze della Vita

Maiale

5.5 mm, rap. sagittale



Maiale

9,4 mm

FIG. 71. Sezione trasversale di embrione di maiale attraverso il cuore a livello del foramen secundum interatriale.

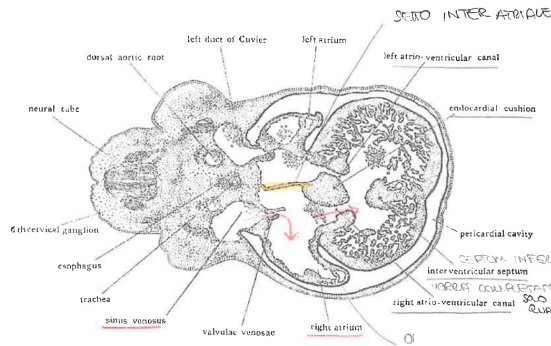
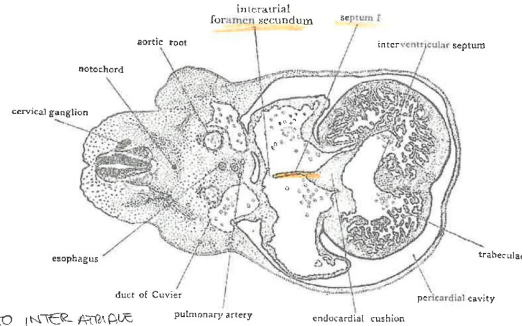


FIG. 72. Sezione trasversale di embrione di maiale attraverso il cuore a livello del canale atrioventricolare.

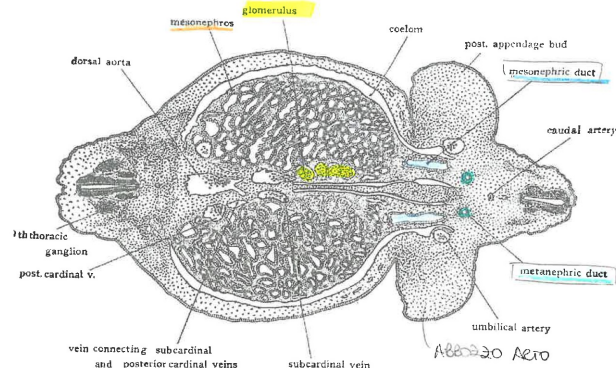
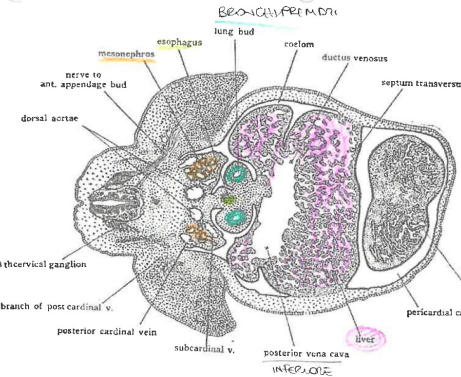


FIG. 78. Sezione trasversale a livello dei primordi del metanefro



MAIALE 9,4 mm

FIG. 74. Sezione trasversa attraverso la parte cefalica del fegato.

FIG. 74. Sezione trasversa appena cefalica all'attacco del peduncolo ombelicale. Il peduncolo ombelicale e la punta della coda non sono inclusi nel disegno

