

What is a Science Centre?

Igniting curiosity, inspiring discovery, and making science accessible for all ages.

CRASC – 13/05/26



Science Centres, or new-generation science museums, represent the modern model and the revolutionary evolution of traditional science museums.

Traditional museums are:

- Late nineteenth-century creations
- Limited to a “behind glass” display of the great achievements of science and technology

Their main objectives were:

- To “glorify” the positivist spirit of the Industrial Revolution
- To present visitors with a meaningful catalogue of discoveries and applications of human ingenuity for the benefit of progress
- To “preserve” copies or original historical scientific instruments that had belonged to aristocratic or princely collections and had meanwhile become public heritage

They are generally located in buildings of considerable importance and size, precisely in order to preserve this celebratory and conservation-oriented idea.

More Than Just a Museum: A Hub for Discovery

Science centres are interactive institutions dedicated to making **STEM** — science, technology, engineering, and mathematics — accessible and genuinely engaging for the public.

They go far beyond passive observation, offering **hands-on exhibits**, live demonstrations, and immersive experiences that encourage exploration, critical thinking, and a love of learning.



The Core Mission: Inspiring Lifelong Learning

Spark Curiosity

Ignite a passion for discovery in visitors of all ages — from young children to lifelong learners.

Demystify Science

Break down complex scientific concepts through relatable, interactive, and hands-on formats.

Connect to Daily Life

Foster a deeper understanding of how science shapes our everyday lives and the wider world around us.

Hands-On Exploration: Learning by Doing



The Exploratorium, San Francisco

A world-renowned public learning laboratory with over **700 hands-on exhibits** exploring science, art, and human perception.



California Science Centre, Los Angeles

Features galleries including **"GAME ON! Science, Sports & Play"** and **"Life! Beginnings"** — making science tangible and genuinely fun.



Visit Teach & Learn Explore What We Do Support Shop

Become a Member

Buy Tickets

Take your imagination out to play.

Plan Your Visit

<https://www.exploratorium.edu/>


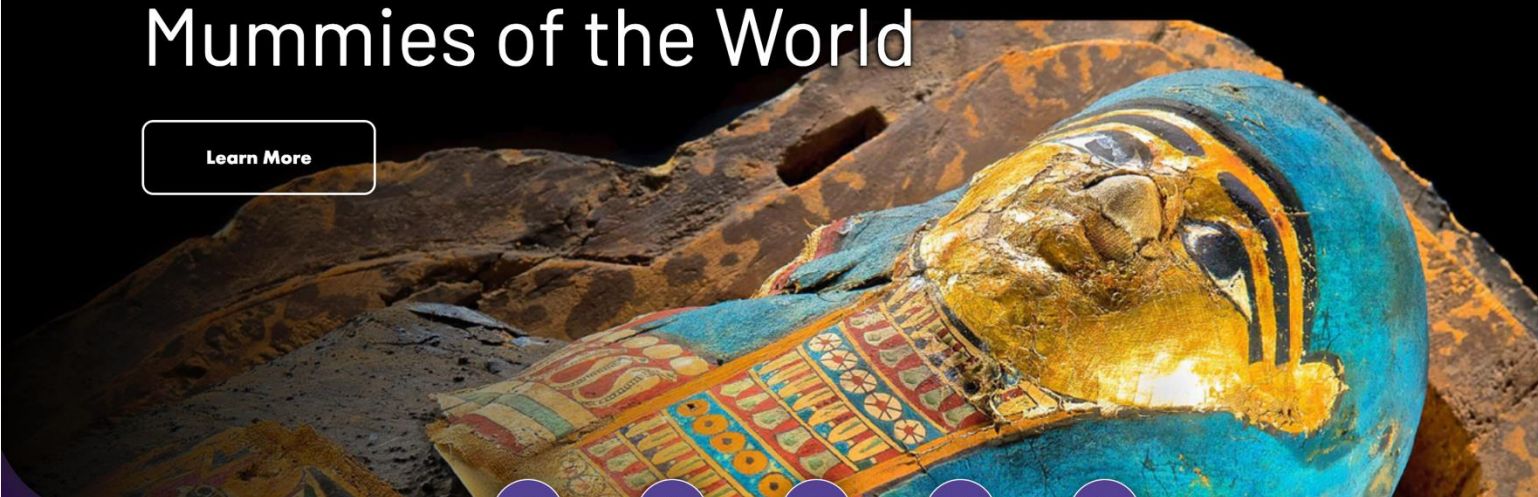
Select Language Alerts Share View Cart

California Science Center Visit Exhibits IMAX Programs FunLab Shop Give & Join Plan Your Day

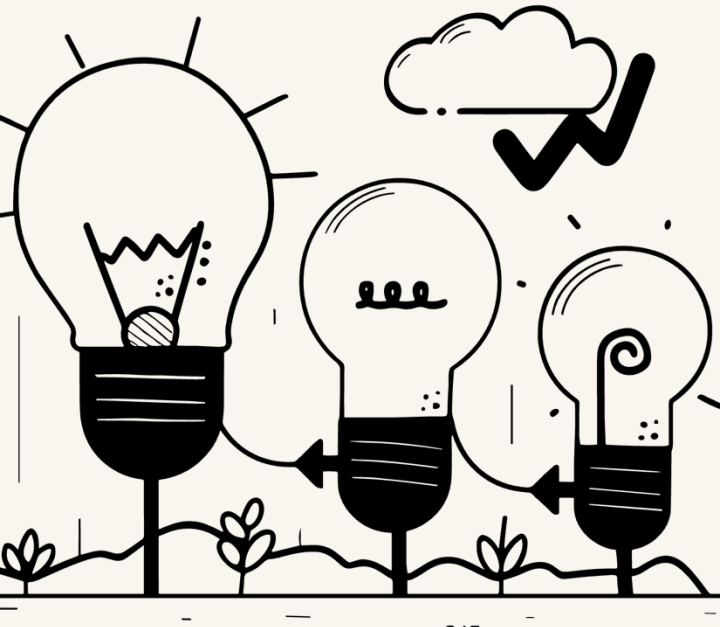
EXHIBITION NOW OPEN

Mummies of the World

Learn More



<https://californiasciencecenter.org/>



Spectacular Science in Action: Live Demonstrations

Museum of Science, Boston

Hosts the iconic "Theatre of Electricity" — a breathtaking million-volt lightning show that makes high-voltage science unforgettable.

Orlando Science Centre

Delivers high-energy live demonstrations that turn natural curiosity into excitement, making science dynamic, surprising, and deeply engaging.



<https://www.youtube.com/watch?v=mpFTWkiV8OU>

<https://www.mos.org/>



<https://www.osc.org/>

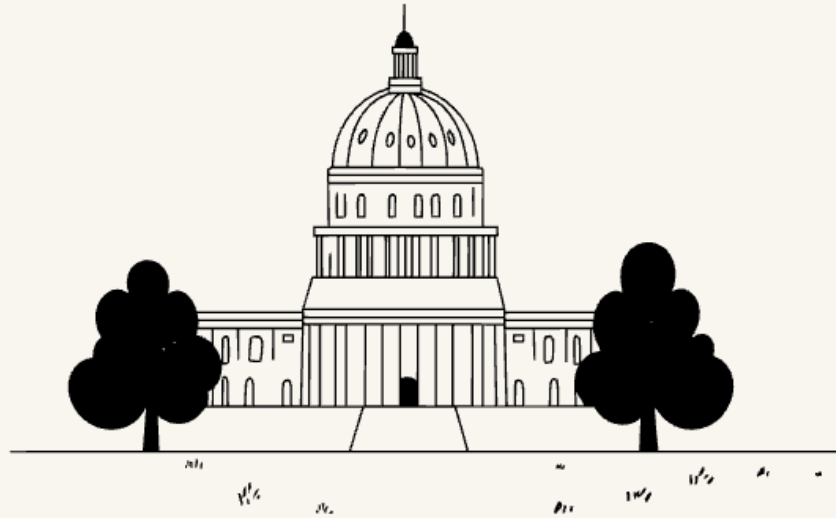
Immersive Experiences: Beyond the Exhibits

COSI, Columbus

Temporary experiences like **"Pixar: The Science Behind the Stories"** bring beloved characters to life through the lens of real science.

Exploration Place, Wichita

Dome films like **"A Mission to Keep the Forest Alive"** transform science into a cinematic, immersive adventure.



The Science Behind **PIXAR**

Explore the Exhibit | For Educators | For Researchers



Enter the Museum of Science's *The Science Behind Pixar* to learn about the steps in Pixar's development process.

<https://sciencebehindpixar.org/>

Stay Connected With Us: Join Our Mailing List



Who We Are ▾

Support Us ▾

Hours & Location

Languages ▾

Search

VISIT US ▾

SPECIAL EVENTS ▾

CAMPS & EDUCATION ▾

GET TICKETS

MEMBERSHIPS



REGISTER TODAY!

Hands-On, Minds-On

Summer should spark something exciting. At Exploration Place camps, kids dive into hands-on projects, experiment with new ideas and explore how science shapes the world around them. Each week offers a fresh theme, led by experienced educators and designed to build confidence, creativity and collaboration—without ever feeling like

<https://exploration.org/>

Community Engagement: Science for Everyone



The Franklin Institute, Philadelphia

Hosts "**Science After Hours**" for adults and "**Spring Break at TFI**" for families — creating diverse, inclusive opportunities for community engagement year-round.



MOSI, Tampa

Provides summer camps, school field trips, outreach programmes, and overnight camp-ins — ensuring **broad access to STEM education** across all communities.

NOW OPEN!

Universal Theme Parks: The Exhibition

The world premiere exhibition ignites imaginations with an inside look at the world-building behind Universal's legendary creations.

Learn More

TM & © 2026 UNIVERSAL STUDIOS



<https://fi.edu/en>

EXPLORE — EXHIBITS & EXPERIENCES

Discover What's Here



All Exhibits & Experiences

Filter By




<https://mosi.org/exhibits-and-experiences/>

A Global Network: Connecting Through Science



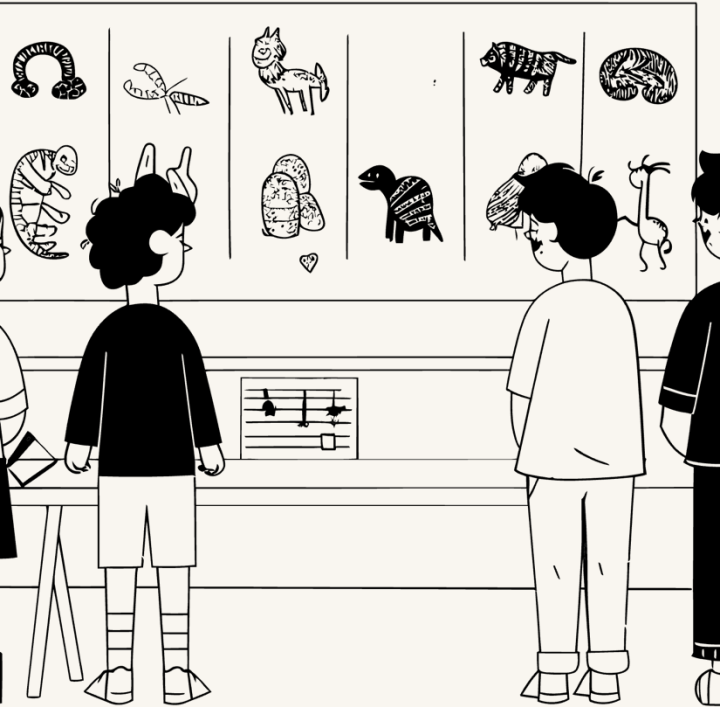
Science centres are part of a **worldwide movement** united by a shared purpose. Institutions like the Museum of Science in Boston offer **reciprocal admission to nearly 500** participating science centres and zoos globally.

 This network fosters collaboration and shares best practices in science communication, education, and public engagement across borders.

<https://www.ecsite.eu/>



The Impact: Building a Brighter Future



Empowering Innovators

Science centres nurture the next generation of critical thinkers, problem-solvers, and future leaders in science and technology.

Scientific Literacy

They cultivate a scientifically literate society — essential for addressing the global challenges of our time.

Accessible to All

By lowering barriers to science education, they ensure that curiosity and opportunity are never limited by background or age.

Science Centres: Where Wonder Meets Discovery

"Science is not just for scientists — it belongs to everyone who dares to ask *why*."

Science centres transform abstract concepts into **tangible, memorable experiences** — vibrant spaces that prove science truly is for everyone. Visit your local science centre and ignite your own journey of exploration.

