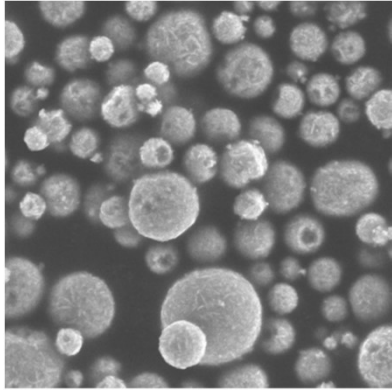
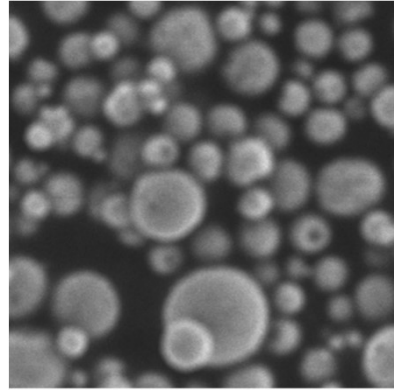


Examples of SEM images

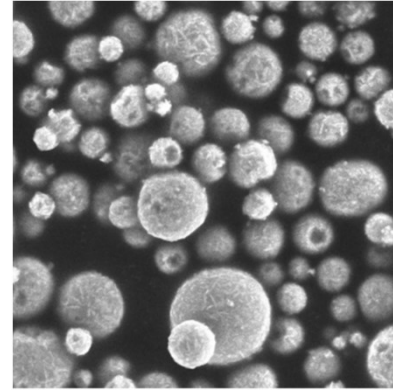
SEM Images



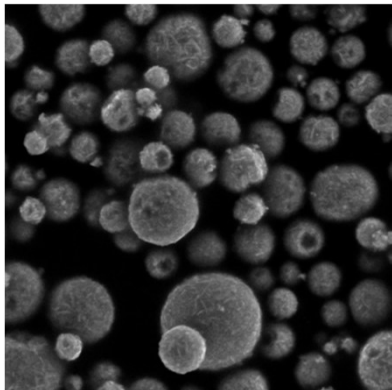
Brightness too high



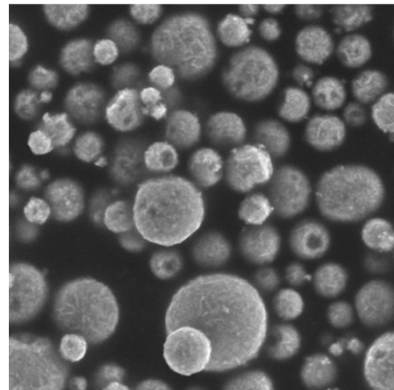
Out of focus



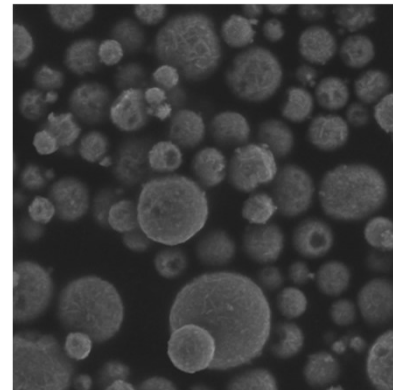
Contrast too high



Brightness too low

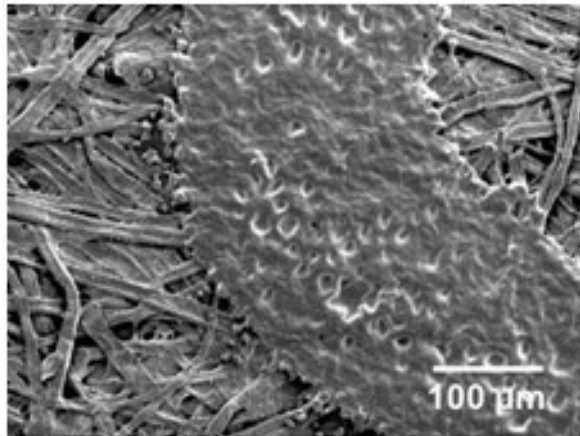
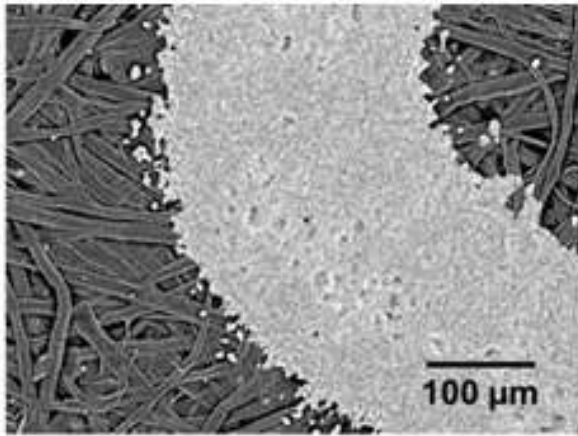


Good image

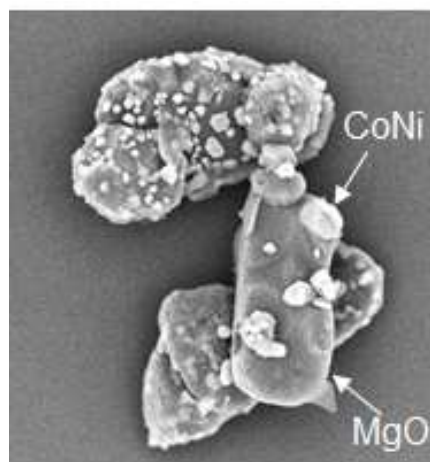
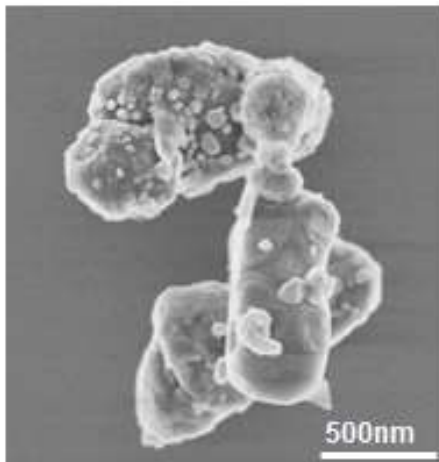


Contrast and brightness too low

SEM Images



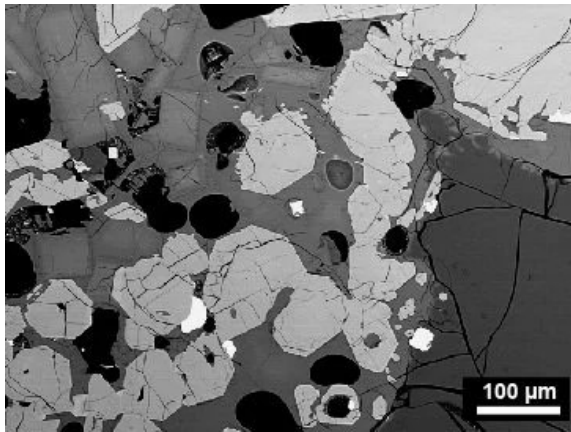
Which one is the BSE image and which one the SE?



Ni/Co on MgO which one is the BSE image and which one the SE?

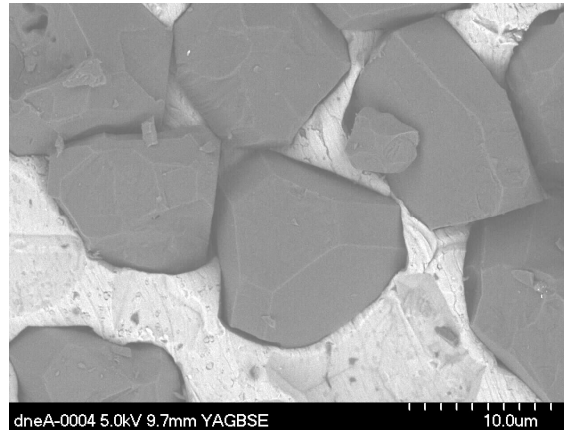
SEM Images

Thin slice of a volcanic rock.

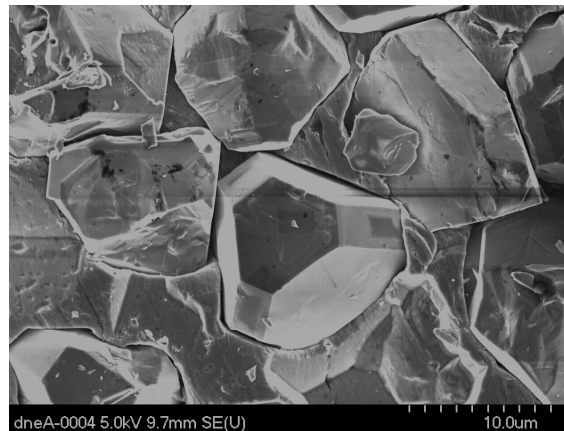


SE or BSE image?

boron nitride crystals

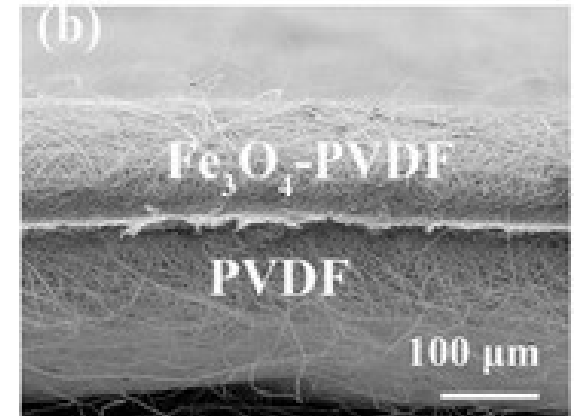


SE or BSE image?



SE or BSE image?

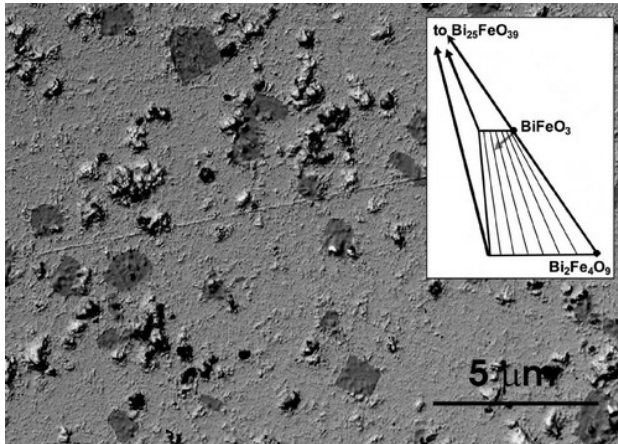
Composite material



SE or BSE image?

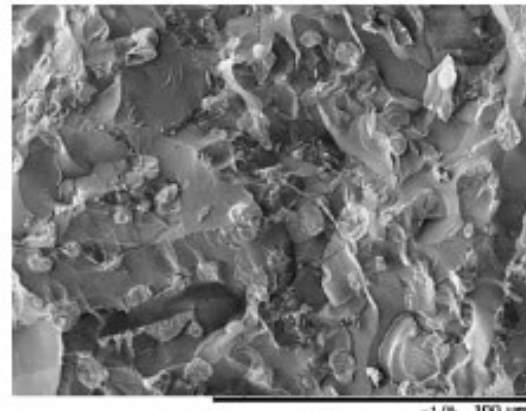
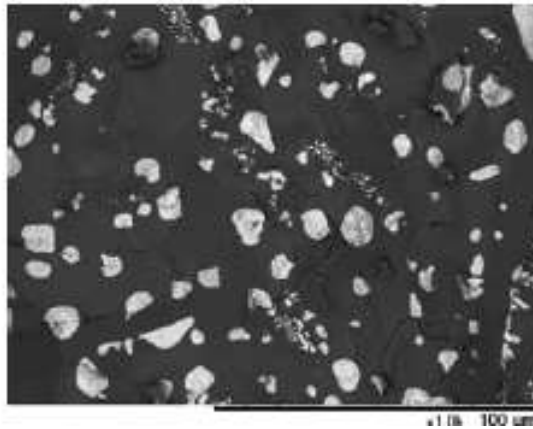
SEM Images

BiFeO₃+other compounds



SE or BSE image?

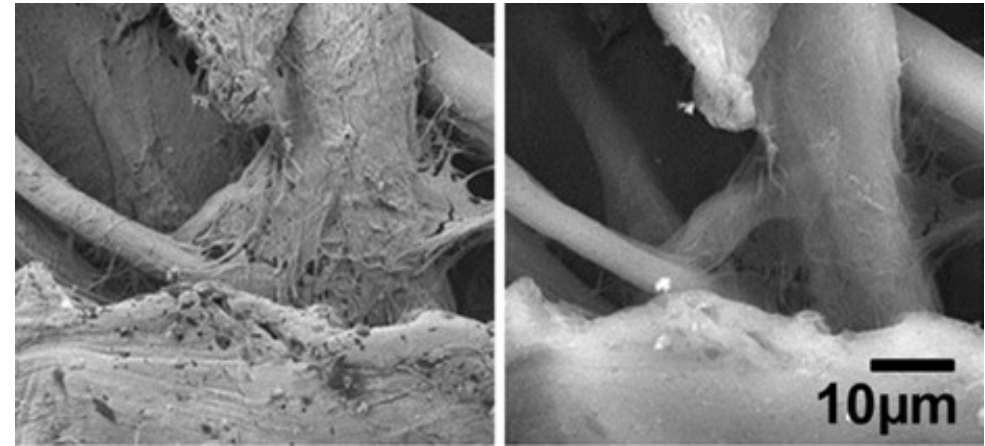
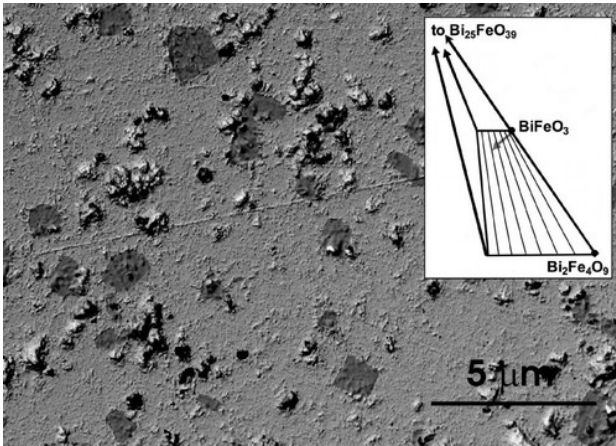
SEM image of a fracture of a ceramic material



Which one is a BSE image? Why?

SEM Images

SE image of gold-coated filter paper



BiFeO₃ containing Bi₂Fe₄O₉, which is which?

Which image was taken at higher accelerating voltage?